



State of West Virginia
 Department of Administration
 Purchasing Division
 2019 Washington Street East
 Post Office Box 50130
 Charleston, WV 25305-0130

Purchase Order

PURCHASE ORDER NO.
 DIGCOP12

PAGE
 1

BLANKET RELEASE
 00

CHANGE ORDER
 5

CORRECT PURCHASE ORDER NUMBER
 MUST APPEAR ON ALL PACKAGES,
 INVOICES, AND SHIPPING PAPERS.
 QUESTIONS CONCERNING THIS PUR-
 CHASE ORDER SHOULD BE DIRECTED
 TO THE BUYER AS NOTED BELOW.

INVOICE TO
 ALL STATE AGENCIES
 AND POLITICAL SUBDIVISIONS
 VARIOUS LOCALES AS INDICATED
 BY ORDER

VENDOR
 *817143205 304-744-7440
 KOMAX BUSINESS SYSTEMS LLC
 500 D STREET
 SOUTH CHARLESTON WV 25303

SHIP TO
 ALL STATE AGENCIES
 AND POLITICAL SUBDIVISIONS
 VARIOUS LOCALES AS INDICATED
 BY ORDER

AGENCY COPY

| DATE PRINTED | | TERMS OF SALE | | FEIN/SSN | | FUND | |
|---|---|---------------|------------------|----------------------|------------|----------------|--|
| 03/17/2014 | | NET 30 | | 550767809 | | | |
| SHIP VIA | | F.O.B | | FREIGHT TERMS | | ACCOUNT NUMBER | |
| BEST WAY | | DESTINATION | | PREPAID | | MUL-MUL | |
| LINE | QUANTITY | UOP | VENDOR ITEM NO. | | UNIT PRICE | AMOUNT | |
| | DELIVERY DATE | CAT.NO. | ITEM NUMBER | | | | |
| | | | CHANGE ORDER #05 | | | | |
| | TO ADD REVISED PRICING PAGES TO INCORPORATE SOME ADDITIONAL OPTIONS AVAILABLE ON FOR THE BAND 1 MONOCHROME MACHINE. | | | | | | |
| | EFFECTIVE DATE: 03/10/2014 | | | | | | |
| | NO OTHER CHANGES | | | | | | |
| | | | | PREVIOUS PO TOTAL==> | OPEN | END | |
| | | | | PO NET CHANGE (+)==> | | | |
| PURCHASING DIVISION CERTIFIED ENCUMBERED | | | | | | | |
| MAR 20 2014 | | | | | | | |
| <i>Beverly Toler</i> | | | | | | | |
| | | | | | | OPEN END | |
| | | | | | | TOTAL | |

IF APPROVAL AS TO FORM IS REQUIRED BY ATTORNEY GENERAL, CHECK HERE

Dallas
 APPROVED AS TO FORM BY
 ASSISTANT ATTORNEY GENERAL

BY *Tara Lyle* 304-558-2544
 PURCHASING DIVISION AUTHORIZED SIGNATURE

Bizhub 3320 and Accessories

Band 1 Monochrome

| Model | Description | Item Number | Purchase Price | 24 Month Rental | 36 Month Rental | 48 Month Rental | Picked Items |
|---|--|----------------------|----------------|-----------------|-----------------|-----------------|--------------|
| Bizhub 3320 (Inc. Single-Side Doc Feeder) | Base Contract Configuration (Copy, Print, Scan, & Fax) | | \$ 700.00 | \$ 50.67 | \$ 40.94 | \$ 36.08 | |
| | Maintenace & Supplies up to 5K per month | | \$21.50 /Mo | Included | Included | Included | |
| | Per Copy Maintenance Overages (5,001 & Up) | | .015 / copy | .015 / copy | .015 / copy | .015 / copy | |
| Paper Supply Options (3320 can add 1 additional - 4020 can add up to 3 additional cassettes) | | | | | | | |
| PF-P12 | Paper Cassette 550-sheet | A6440Y1 | \$ 255.70 | \$ 12.76 | \$ 8.95 | \$ 7.65 | |
| Miscellaneous Options | | | | | | | |
| DK-P02 Copy Desk | Cabinet Stand | 9967002761 | \$ 175.00 | \$ 8.73 | \$ 6.13 | \$ 5.23 | |
| 15 Amp Digital Copier Surge Protector | 15 Amp Digital Copier Surge Protector | 15DCSP | \$ 133.50 | \$ 6.65 | \$ 4.67 | \$ 3.99 | |
| NC-P03 | Wireless Network Interface For 3320 Only | A6WRWY1 ³ | \$ 52.00 | \$ 2.58 | \$ 1.82 | \$ 1.55 | |
| Universal Options | See Universal Options Sheet for card readers and other options | | | | | | |
| Upgrade Options FOR 4020 Only - INITIAL ORDER ONLY | | | | | | | |
| Bizhub 4020 (Inc. Rev. Doc Feeder) | Upgrade from 3320 to 4020 (Must Inc. 3320 Pricing Also) | A6WD011 | \$ 550.00 | \$ 27.44 | \$ 19.25 | \$ 16.45 | |
| HD-P05 | 160 GB Hard Disk Drive | A6WJWY1 | \$ 398.65 | \$ 19.88 | \$ 13.95 | \$ 11.92 | |
| EM-P03 | Expanded Ram Memory for 4020 | A6WAWY1 | \$ 105.00 | \$ 5.23 | \$ 3.68 | \$ 3.14 | |
| UK-P11 | AFP/IPDS Card (Provides compatiblity for Mainframe Printing) | A6WCWY1 | \$ 598.50 | \$ 29.86 | \$ 20.95 | \$ 17.90 | |
| UK-P10 | Forms Barcode Card (Provides Barcodes) | A6WEWY1 | \$ 397.55 | \$ 19.83 | \$ 13.91 | \$ 11.89 | |
| NC-P02 | Wireless Network Interface For 4020 Only | A6WRWY1 ³ | \$ 85.25 | \$ 4.24 | \$ 2.98 | \$ 2.55 | |
| UK-P01 | 256MB User Flash | A6A80Y1 ² | \$ 75.79 | \$ 3.77 | \$ 2.65 | \$ 2.27 | |
| Supplies | | | | | | | |
| IUP18 | Imaging Unit FOR 3320 & 4020 (60 K) | A6W903V | Included w/MA | Included | Included | Included | |
| TNP41 | Black Toner for the 3320 (10 K) | A6WT00F | Included w/MA | Included | Included | Included | |
| TNP40 | Black Toner for the 4020 (20 K) | A6WN01F | Included w/MA | Included | Included | Included | |

¹ bizhub 3320 Copier/Printer/Scanner/Fax - Includes PS, PCL & XPS Controller, 256 MB Standard Memory, Single-sided ADF, Duplex Unit, Imaging Unit, and Starter Toner (2.5K).

² Flash card for font downloading function and to save job account log (cannot be combined with UK-P10 or UK-P11).

³ Provides wireless connectivity.

Bizhub 284e and Accessories

Band 2 Monochrome

| Model | Description | Item Number | Purchase Price | 24 Month Rental | 36 Month Rental | 48 Month Rental | Picked Items |
|---|--|-------------|----------------|-----------------|-----------------|-----------------|--------------|
| Bizhub 284e (28 PPM) | Base Contract Configuration (Copy, Print, Scan, & Fax) | | \$ 2,800.00 | \$ 169.12 | \$ 121.08 | \$ 97.06 | |
| | Maintenance & Supplies up to 15K per month | | \$25.00 /Mo | Included | Included | Included | |
| | Per Copy Maintenance Overages (15,001 & Up) | | .009 / copy | .01 / copy | .01 / copy | .01 / copy | |
| Output Options | | | | | | | |
| FS-534 | 50-Sheet Stapling Finisher | A3EPWY1 | \$ 1,021.00 | \$ 50.95 | \$ 35.74 | \$ 30.53 | |
| FS-534 + SD 511 | 50-Sheet Stapling Finisher + Saddle Stitcher | A3EPWYA | \$ 1,841.00 | \$ 91.87 | \$ 64.44 | \$ 55.05 | |
| PK-520 | Punch Kit (2/3 Holes) for FS-534 | A3ETW11 | \$ 351.00 | \$ 17.51 | \$ 12.29 | \$ 10.49 | |
| PK-519 | 2/3 Hole Punch Unit (FS-533) | A3EUW11 | \$ 351.00 | \$ 17.51 | \$ 12.29 | \$ 10.49 | |
| Document Feeder Options | | | | | | | |
| DF-701 | Single Pass Dual Scan Document Feeder | A3CEWY1 | \$ 1,060.00 | \$ 52.89 | \$ 37.10 | \$ 31.69 | |
| Paper Supply Options (Select Only One) | | | | | | | |
| PC-410 | Large Capacity Cassette (2500 sheet Ltr) | A2XM013 | \$ 840.00 | \$ 41.92 | \$ 29.40 | \$ 25.12 | |
| PC-210 | 2-way Paper Feed Cabinet (Two 500 sheet drawers) | A2XMWY2 | \$ 712.00 | \$ 35.53 | \$ 24.92 | \$ 21.29 | |
| PC-110 | Paper Feed Cabinet (One 500 sheet drawer) | A2XMWY1 | \$ 545.00 | \$ 27.20 | \$ 19.08 | \$ 16.30 | |
| Miscellaneous Options | | | | | | | |
| KP-101 | KP-101 10-Key Pad | A64TWY1 | \$ 126.00 | \$ 6.28 | \$ 4.41 | \$ 3.77 | |
| WT-506 | Working Table | A0W4WY2 | \$ 56.00 | \$ 2.79 | \$ 1.96 | \$ 1.67 | |
| External Keyboard | External Keyboard (req's KH-102) | 7640006869 | \$ 127.20 | \$ 6.35 | \$ 4.45 | \$ 3.80 | |
| KH-102 | Keyboard Holder (for External Keyboard) | A4NRWY1 | \$ 72.50 | \$ 3.62 | \$ 2.54 | \$ 2.17 | |
| 15 Amp Digital Copier Surge Protector | 15 Amp Digital Copier Surge Protector | 15DCSP | \$ 133.50 | \$ 6.65 | \$ 4.67 | \$ 3.99 | |
| Universal Options | See Universal Options Sheet for card readers and other options | | | | | | |
| Supplies | | | | | | | |
| SK-602 | Staples for FS-533 & FS-534 (5,000 x 3) | 14YK | Inc. w/CPC | Inc. w/CPC | Inc. w/CPC | Inc. w/CPC | |
| TN-322 | TN-322 Toner (24k) | A33K030 | Incl. with MA | Included | Included | Included | |

Bizhub 364e and Accessories

Band 3 Monochrome

| Model | Description | Item Number | Purchase Price | 24 Month Rental | 36 Month Rental | 48 Month Rental | Picked Items |
|---|--|-------------|----------------|-----------------|-----------------|-----------------|--------------|
| Bizhub 364e (36 PPM) | Base Contract Configuration (Copy, Print, Scan, & Fax) | | \$ 3,200.00 | \$ 195.45 | \$ 142.14 | \$ 115.48 | |
| | Maintenance & Supplies up to 30K per month | | \$35.50/Mo | Included | Included | Included | |
| | Per Copy Maintenance Overages (30,001 & Up) | | .009 / copy | .01 / copy | .01 / copy | .01 / copy | |
| Output Options | | | | | | | |
| FS-534 | 50-Sheet Stapling Finisher | A3EPWY1 | \$ 1,021.00 | \$ 50.95 | \$ 35.74 | \$ 30.53 | |
| FS-534 + SD 511 | 50-Sheet Stapling Finisher + Saddle Stitcher | A3EPWYA | \$ 1,841.00 | \$ 91.87 | \$ 64.44 | \$ 55.05 | |
| PK-520 | Punch Kit (2/3 Holes) for FS-534 | A3ETW11 | \$ 351.00 | \$ 17.51 | \$ 12.29 | \$ 10.49 | |
| PK-519 | 2/3 Hole Punch Unit (FS-533) | A3EUW11 | \$ 351.00 | \$ 17.51 | \$ 12.29 | \$ 10.49 | |
| Document Feeder Options | | | | | | | |
| DF-701 | Single Pass Dual Scan Document Feeder | A3CEWY1 | \$ 1,060.00 | \$ 52.89 | \$ 37.10 | \$ 31.69 | |
| Paper Supply Options (Select Only One) | | | | | | | |
| PC-410 | Large Capacity Cassette (2500 sheet Ltr) | A2XM013 | \$ 840.00 | \$ 41.92 | \$ 29.40 | \$ 25.12 | |
| PC-210 | 2-way Paper Feed Cabinet (Two 500 sheet drawers) | A2XMWY2 | \$ 712.00 | \$ 35.53 | \$ 24.92 | \$ 21.29 | |
| PC-110 | Paper Feed Cabinet (One 500 sheet drawer) | A2XMWY1 | \$ 545.00 | \$ 27.20 | \$ 19.08 | \$ 16.30 | |
| Miscellaneous Options | | | | | | | |
| KP-101 | KP-101 10-Key Pad | A64TWY1 | \$ 126.00 | \$ 6.28 | \$ 4.41 | \$ 3.77 | |
| WT-506 | Working Table | A0W4WY2 | \$ 56.00 | \$ 2.79 | \$ 1.96 | \$ 1.67 | |
| External Keyboard | External Keyboard (req's KH-102) | 7640006869 | \$ 127.20 | \$ 6.35 | \$ 4.45 | \$ 3.80 | |
| KH-102 | Keyboard Holder (for External Keyboard) | A4NRWY1 | \$ 72.50 | \$ 3.62 | \$ 2.54 | \$ 2.17 | |
| 15 Amp Digital Copier Surge Protector | 15 Amp Digital Copier Surge Protector | 15DCSP | \$ 133.50 | \$ 6.65 | \$ 4.67 | \$ 3.99 | |
| Universal Options | See Universal Options Sheet for card readers and other options | | | | | | |
| Supplies | | | | | | | |
| SK-602 | Staples for FS-533 & FS-534 (5,000 x 3) | 14YK | Incl. w/CPC | Incl. w/CPC | Incl. w/CPC | Incl. w/CPC | |
| TN-322 | TN-322 Toner (24k) | A33K030 | Incl. with MA | Included | Included | Included | |

000004

Bizhub 454e and Accessories

Band 4 Monochrome

| Model | Description | Item Number | Purchase Price | 24 Month Rental | 36 Month Rental | 48 Month Rental | Picked Items |
|---|---|-------------|------------------|-----------------|-----------------|-----------------|--------------|
| Bizhub 454e (45 PPM) | Base Contract Configuration (Copy, Print, Scan, & Fax) | | \$ 4,544.40 | \$ 230.60 | \$ 167.48 | \$ 135.93 | |
| | Maintenace & Supplies up to 45K per month | | \$41.25/Mo | Included | Included | Included | |
| | Per Copy Maintenance Overages (45,001 & Up) | | .009 / copy | .01 / copy | .01 / copy | .01 / copy | |
| Output Options | | | | | | | |
| FS-534 | 50-Sheet Stapling Finisher | A3EPWY1 | \$ 1,021.00 | \$ 50.95 | \$ 35.74 | \$ 30.53 | |
| FS-534 + SD 511 | 50-Sheet Stapling Finisher + Saddle Stitcher | A3EPWYA | \$ 1,841.00 | \$ 91.87 | \$ 64.44 | \$ 55.05 | |
| PK-520 | Punch Kit (2/3 Holes) for FS-534 | A3ETW11 | \$ 351.00 | \$ 17.51 | \$ 12.29 | \$ 10.49 | |
| Paper Supply Options (Only One PC-xxx can be selected) and (Only one LU-xxx can be selected) | | | | | | | |
| PC-410 | Large Capacity Cassette (2500 sheet Ltr) for a total of 3650 sheets | A2XM013 | \$ 840.00 | \$ 41.92 | \$ 29.40 | \$ 25.12 | |
| PC-210 | 2-way Paper Feed Cabinet (Two 500 sheet drawers) | A2XMWY2 | \$ 712.00 | \$ 35.53 | \$ 24.92 | \$ 21.29 | |
| LU-301 | Large Capacity Unit (3,000 sheets/Letter) Side Unit | A03NWY2 | \$ 951.67 | \$ 47.49 | \$ 33.31 | \$ 28.45 | |
| LU-204 | Large Capacity Unit (2,500 sheets/Letter, Legal, Ledger and 12"x18") Side Unit | A0TJWY4 | \$ 1,744.65 | \$ 87.06 | \$ 61.06 | \$ 52.17 | |
| Miscellaneous Options | | | | | | | |
| KP-101 | KP-101 10-Key Pad | A64TWY1 | \$ 126.00 | \$ 6.28 | \$ 4.41 | \$ 3.77 | |
| WT-506 | Working Table | A0W4WY2 | \$ 56.00 | \$ 2.79 | \$ 1.96 | \$ 1.67 | |
| UK-204 | 2 GB Memory Upgrade Kit (for i-Option) | A4MHWY1 | \$ 150.00 | \$ 7.49 | \$ 5.25 | \$ 4.49 | |
| External Keyboard | External Keyboard (also requires KH-102) | 7640006869 | \$ 127.20 | \$ 6.35 | \$ 4.45 | \$ 3.80 | |
| KH-102 | Keyboard Holder (for External Keyboard) | A4NRWY1 | \$ 72.50 | \$ 3.62 | \$ 2.54 | \$ 2.17 | |
| 20 Amp Digital Copier Surge Protector | 20 Amp Digital Copier Surge Protector | 20DCSP | \$ 138.85 | \$ 6.93 | \$ 4.86 | \$ 4.15 | |
| Universal Options | See Universal Options Sheet for card readers and other options | | | | | | |
| Fax Options | | | | | | | |
| FK-508 | Multi-Line Plus Fax Board (for second fax line only) | A22M011 | \$738.50 | \$ 36.85 | \$ 25.85 | \$ 22.08 | |
| Supplies | | | | | | | |
| TN-513 | TN-513 Toner (24.4K) | A33K031 | Included with MA | Included | Included | Included | |
| SK-602 | Staples for FS-534 and SD-511, SD-512 (5K x 3) | 14YK | Included with MA | Included | Included | Included | |
| MS-10A | Staples for FS-535 (5K x 3) | 4599141 | Included with MA | Included | Included | Included | |

Bizhub 554e and Accessories

Band 5 Monochrome

| Model | Description | Item Number | Purchase Price | 24 Month Rental | 36 Month Rental | 48 Month Rental | Picked Items |
|---|--|-------------|------------------|-----------------|-----------------|-----------------|--------------|
| Bizhub 554e (55 PPM) | Base Contract Configuration (Copy, Print, Scan, & Fax) | | \$ 5,831.74 | \$ 315.99 | \$ 234.99 | \$ 194.49 | |
| | Maintenance & Supplies up to 65K per month | | \$73.00/mo | Included | Included | Included | |
| | Per Copy Maintenance Overages (65,001 & Up) | | .009 / copy | .01 / copy | .01 / copy | .01 / copy | |
| Output Options | | | | | | | |
| FS-534 | 50-Sheet Stapling Floor Finisher | A3EPWY1 | \$ 1,021.00 | \$ 50.95 | \$ 35.74 | \$ 30.53 | |
| FS-534 + SD 511 | 50-Sheet Stapling Floor Finisher + Saddle Stitcher | A3EPWYA | \$ 1,841.00 | \$ 91.87 | \$ 64.44 | \$ 55.05 | |
| PK-520 | Punch Kit (2/3 Holes) for FS-534 | A3ETW11 | \$ 351.00 | \$ 17.51 | \$ 12.29 | \$ 10.49 | |
| FS-535 | 100-Sheet Stapling Finisher | A2Y1WY1 | \$ 1,720.00 | \$ 85.83 | \$ 60.20 | \$ 51.43 | |
| SD-512 | Saddle Stitcher Kit (for FS-535) | A2Y2WY1 | \$ 947.00 | \$ 47.26 | \$ 33.15 | \$ 28.32 | |
| PK-521 | Punch Kit (2/3-Holes) for FS-535 | A2YRW11 | \$ 451.00 | \$ 22.50 | \$ 15.79 | \$ 13.48 | |
| ZU-606 | Z-Folding Unit (for FS-535) | A109W12 | \$ 3,561.60 | \$ 177.72 | \$ 124.66 | \$ 106.49 | |
| PI-505 | Post Inserter (for FS-535) | A10AWY1 | \$ 602.72 | \$ 30.08 | \$ 21.10 | \$ 18.02 | |
| JS-602 | Job Separator Tray (3rd Output Tray)(for FS-535) | A10CWY1 | \$ 261.29 | \$ 13.04 | \$ 9.15 | \$ 7.81 | |
| Paper Supply Options (Only one LU-xxx can be selected) | | | | | | | |
| PC-410 | Large Capacity Cassette (2500 sheet Ltr) for a total of 3650 sheets | A2XM013 | \$ 840.00 | \$ 41.92 | \$ 29.40 | \$ 25.12 | |
| LU-301 | Large Capacity Unit (3,000 sheets/Letter) Side Unit | A03NWY2 | \$ 951.67 | \$ 47.49 | \$ 33.31 | \$ 28.45 | |
| LU-204 | Large Capacity Unit (2,500 sheets/Letter, Legal, Ledger and 12"x18") Side Unit | A0TJWY4 | \$ 1,744.65 | \$ 87.06 | \$ 61.06 | \$ 52.17 | |
| Miscellaneous Options | | | | | | | |
| HD-509 | 250 GB Hard Disk Drive (required on base unit) | | \$ 323.30 | \$ 16.13 | \$ 11.32 | \$ 9.67 | X |
| KP-101 | KP-101 10-Key Pad | A64TWY1 | \$ 126.00 | \$ 6.28 | \$ 4.41 | \$ 3.77 | |
| WT-506 | Working Table | A0W4WY2 | \$ 56.00 | \$ 2.79 | \$ 1.96 | \$ 1.67 | |
| UK-204 | 2 GB Memory Upgrade Kit (for i-Option) | A4MHWY1 | \$ 150.00 | \$ 7.49 | \$ 5.25 | \$ 4.49 | |
| External Keyboard | External Keyboard (also requires KH-102) | 7640006869 | \$ 127.20 | \$ 6.35 | \$ 4.45 | \$ 3.80 | |
| KH-102 | Keyboard Holder (for External Keyboard) | A4NRWY1 | \$ 72.50 | \$ 3.62 | \$ 2.54 | \$ 2.17 | |
| 20 Amp Digital Copier Surge Protector | 20 Amp Digital Copier Surge Protector | 20DCSP | \$ 138.85 | \$ 6.93 | \$ 4.86 | \$ 4.15 | |
| Universal Options | See Universal Options Sheet for card readers and other options | | | | | | |
| Fax Options | | | | | | | |
| FK-508 | Multi-Line Plus Fax Board (for second fax line only) | A22M011 | \$ 738.50 | \$ 36.85 | \$ 25.85 | \$ 22.08 | |
| Supplies | | | | | | | |
| TN-513 | TN-513 Toner (24.4K) | A33K031 | Included with MA | Included | Included | Included | |
| SK-602 | Staples for FS-534 and SD-511, SD-512 (5K x 3) | 14YK | Included with MA | Included | Included | Included | |
| MS-10A | Staples for FS-535 (5K x 3) | 4599141 | Included with MA | Included | Included | Included | |

Bizhub 654e and Accessories

Band 6 Monochrome

| Model | Description | Item Number | Purchase Price | 24 Month Rental | 36 Month Rental | 48 Month Rental | Picked Items |
|---|--|-------------|----------------|-----------------|-----------------|-----------------|--------------|
| Bizhub 654e (65 PPM) | Base Contract Configuration (Copy, Print, Scan, & Fax) | | \$ 6,742.35 | \$ 381.68 | \$ 288.04 | \$ 241.22 | |
| | Maintenance & Supplies up to 80K per month | | \$ 100.00 | Included | Included | Included | |
| | Per Copy Maintenance Overages (80,001 & Up) | | .007 / copy | .01 / copy | .01 / copy | .01 / copy | |
| Output Options | | | | | | | |
| SD-511 | Saddle Kit (for FS-534) | A3ERWY1 | \$ 820.00 | \$ 40.92 | \$ 28.70 | \$ 24.52 | |
| PK-520 | Punch Kit (2/3 Holes) for FS-534 | A3ETW11 | \$ 351.00 | \$ 17.51 | \$ 12.29 | \$ 10.49 | |
| FS-535 | 100-Sheet Stapling Finisher | A2Y1WY1 | \$ 1,720.00 | \$ 85.83 | \$ 60.20 | \$ 51.43 | |
| SD-512 | Saddle Stitcher Kit (for FS-535) | A2Y2WY1 | \$ 947.00 | \$ 47.26 | \$ 33.15 | \$ 28.32 | |
| PK-521 | Punch Kit (2/3-Holes) for FS-535 | A2YRW11 | \$ 451.00 | \$ 22.50 | \$ 15.79 | \$ 13.48 | |
| ZU-606 | Z-Folding Unit (for FS-535) | A109W12 | \$ 3,561.60 | \$ 177.72 | \$ 124.66 | \$ 106.49 | |
| PI-505 | Post Inserter (for FS-535) | A10AWY1 | \$ 602.72 | \$ 30.08 | \$ 21.10 | \$ 18.02 | |
| JS-602 | Job Separator Tray (3rd Output Tray)(for FS-535) | A10CWY1 | \$ 261.29 | \$ 13.04 | \$ 9.15 | \$ 7.81 | |
| Paper Supply Options (Only one LU-xxx can be selected) | | | | | | | |
| LU-301 | Large Capacity Unit (3,000 sheets/Letter) | A03NWY2 | \$ 951.67 | \$ 47.49 | \$ 33.31 | \$ 28.45 | |
| LU-204 | Large Capacity Unit (2,500 sheets/Letter, Legal, Ledger and 12"x18") | A0TJWY4 | \$ 1,744.65 | \$ 87.06 | \$ 61.06 | \$ 52.17 | |
| Miscellaneous Options | | | | | | | |
| KP-101 | KP-101 10-Key Pad | A64TWY1 | \$ 126.00 | \$ 6.28 | \$ 4.41 | \$ 3.77 | |
| WT-506 | Working Table | A0W4WY2 | \$ 56.00 | \$ 2.79 | \$ 1.96 | \$ 1.67 | |
| External Keyboard | External Keyboard | 7640006869 | \$ 127.20 | \$ 6.35 | \$ 4.45 | \$ 3.80 | |
| KH-102 | Keyboard Holder (for External Keyboard) | A4NRWY1 | \$ 72.50 | \$ 3.62 | \$ 2.54 | \$ 2.17 | |
| 20 Amp Digital Copier Surge Protector | 20 Amp Digital Copier Surge Protector | 20DCSP | \$ 138.85 | \$ 6.93 | \$ 4.86 | \$ 4.15 | |
| Universal Options | See Universal Options Sheet for card readers and other options | | | | | | |
| Supplies | | | | | | | |
| SK-602 | Staples for FS-533 , FS-534 , SD-511, (5,000 x 3) | 14YK | Included w/ MA | Included | Included | Included | |
| Staples MS-10A | 5,000 pcs x 3 (for FS-535) | 4599141 | Included w/ MA | Included | Included | Included | |
| TN-712K | Toner Black (Yield: 40.8K) | A3VU030 | Included w/ MA | Included | Included | Included | |

200007

Bizhub 754e and Accessories

Band 7 Monochrome

| Model | Description | Item Number | Purchase Price | 24 Month Rental | 36 Month Rental | 48 Month Rental | Picked Items |
|---|--|-------------|----------------|-----------------|-----------------|-----------------|--------------|
| Bizhub 754e (75 PPM) | Base Contract Configuration (Copy, Print, Scan, & Fax) | | \$ 8,808.28 | \$ 502.28 | \$ 379.94 | \$ 318.78 | |
| | Maintenance & Supplies up to 150K per month | | \$135.25/mo | Included | Included | Included | |
| | Per Copy Maintenance Overages (150,001 & Up) | | .007 / copy | .01 / copy | .01 / copy | .01 / copy | |
| Output Options | | | | | | | |
| SD-511 | Saddle Kit (for FS-534) | A3ERWY1 | \$ 820.00 | \$ 40.92 | \$ 28.70 | \$ 24.52 | |
| PK-520 | Punch Kit (2/3 Holes) for FS-534 | A3ETW11 | \$ 351.00 | \$ 17.51 | \$ 12.29 | \$ 10.49 | |
| FS-535 | 100-Sheet Stapling Finisher | A2Y1WY1 | \$ 1,720.00 | \$ 85.83 | \$ 60.20 | \$ 51.43 | |
| SD-512 | Saddle Stitcher Kit (for FS-535) | A2Y2WY1 | \$ 947.00 | \$ 47.26 | \$ 33.15 | \$ 28.32 | |
| PK-521 | Punch Kit (2/3-Holes) for FS-535 | A2YRW11 | \$ 451.00 | \$ 22.50 | \$ 15.79 | \$ 13.48 | |
| ZU-606 | Z-Folding Unit (for FS-535) | A109W12 | \$ 3,561.60 | \$ 177.72 | \$ 124.66 | \$ 106.49 | |
| PI-505 | Post Inserter (for FS-535) | A10AWY1 | \$ 602.72 | \$ 30.08 | \$ 21.10 | \$ 18.02 | |
| JS-602 | Job Separator Tray (3rd Output Tray)(for FS-535) | A10CWY1 | \$ 261.29 | \$ 13.04 | \$ 9.15 | \$ 7.81 | |
| Paper Supply Options (Only one LU-xxx can be selected) | | | | | | | |
| LU-301 | Large Capacity Unit (3,000 sheets/Letter) | A03NWX2 | \$ 951.67 | \$ 47.49 | \$ 33.31 | \$ 28.45 | |
| LU-204 | Large Capacity Unit (2,500 sheets/Letter, Legal, Ledger and 12"x18") | A0TJWY4 | \$ 1,744.65 | \$ 87.06 | \$ 61.06 | \$ 52.17 | |
| Miscellaneous Options | | | | | | | |
| KP-101 | KP-101 10-Key Pad | A64TWY1 | \$ 126.00 | \$ 6.28 | \$ 4.41 | \$ 3.77 | |
| WT-506 | Working Table | A0W4WY2 | \$ 56.00 | \$ 2.79 | \$ 1.96 | \$ 1.67 | |
| External Keyboard | External Keyboard | 7640006869 | \$ 127.20 | \$ 6.35 | \$ 4.45 | \$ 3.80 | |
| KH-102 | Keyboard Holder (for External Keyboard) | A4NRWY1 | \$ 72.50 | \$ 3.62 | \$ 2.54 | \$ 2.17 | |
| 20 Amp Digital Copier Surge Protector | 20 Amp Digital Copier Surge Protector | 20DCSP | \$ 138.85 | \$ 6.93 | \$ 4.86 | \$ 4.15 | |
| Universal Options | See Universal Options Sheet for card readers and other options | | | | | | |
| Supplies | | | | | | | |
| SK-602 | Staples for FS-533 , FS-534 , SD-511, (5,000 x 3) | 14YK | Included w/ MA | Included | Included | Included | |
| Staples MS-10A | 5,000 pcs x 3 (for FS-535) | 4599141 | Included w/ MA | Included | Included | Included | |
| TN-712K | Toner Black (Yield: 40,8K) | A3VU030 | Included w/ MA | Included | Included | Included | |

No Copies Are Included - All copies billed Separately
Color Clicks @ \$.06 and B/W Clicks @ \$.015

Bizhub C-3850 and Accessories

Band 1 Color

| Model | Description | Item Number | Purchase Price | 24 Month Rental | 36 Month Rental | 48 Month Rental | Picked Items |
|---------------------------------------|--|-------------------------|----------------|-----------------|-----------------|-----------------|--------------|
| Bizhub C-3850 | Base Contract Configuration (Copy, Print, Scan, & Fax) | | \$ 1,902.75 | \$ 79.28 | \$ 52.85 | \$ 39.64 | |
| Paper Supply Options | | | | | | | |
| DK-P03 | Copy Desk - Cabinet Stand | 9967002766 ⁴ | \$ 175.00 | \$ 8.73 | \$ 6.13 | \$ 5.23 | |
| PF-P13 | Paper Feed Unit (500 sheets ea, Maximum 2) | A4Y6WY1 | \$ 185.00 | \$ 9.23 | \$ 6.48 | \$ 5.53 | |
| Miscellaneous Options | | | | | | | |
| CS-1 | 50-sheet offline stapler | 7640013463 ² | \$ 210.94 | \$ 10.53 | \$ 7.38 | \$ 6.31 | |
| FS-P03 | 20-sheet offline stapler | A6VDWY1 ³ | \$ 199.00 | \$ 9.93 | \$ 6.97 | \$ 5.95 | |
| SX-4600WAN | Wireless LAN Adaptor | SX4600WAN | \$ 260.00 | \$ 12.97 | \$ 9.10 | \$ 7.77 | |
| 15 Amp Digital Copier Surge Protector | 15 Amp Digital Copier Surge Protector | 15DCSP | \$ 133.50 | \$ 6.65 | \$ 4.67 | \$ 3.99 | |
| KP-101 | KP-101 10-Key Pad | A64TWY1 | \$ 126.00 | \$ 6.28 | \$ 4.41 | \$ 3.77 | |
| WT-P02 | Working Table | A6VCWY1 | \$ 75.00 | \$ 3.73 | \$ 2.63 | \$ 2.24 | |
| Universal Options | See Universal Options Sheet for card readers and other options | | | | | | |

| Supplies | | | | | | | |
|-----------------|---|---------|------------|------------|------------|------------|--|
| TNP48K | Toner Black (Yield - 10K) | A5X0130 | Inc. w/CPC | Inc. w/CPC | Inc. w/CPC | Inc. w/CPC | |
| TNP48Y | Toner Yellow (Yield - 10K) | A5X0230 | Inc. w/CPC | Inc. w/CPC | Inc. w/CPC | Inc. w/CPC | |
| TNP48M | Toner Magenta (Yield - 10K) | A5X0330 | Inc. w/CPC | Inc. w/CPC | Inc. w/CPC | Inc. w/CPC | |
| TNP48C | Toner Cyan (Yield - 10K) | A5X0430 | Inc. w/CPC | Inc. w/CPC | Inc. w/CPC | Inc. w/CPC | |
| SK-602 | Staples for CS-1, FS-533 & FS-534 (5,000 x 3) | 14YK | Inc. w/CPC | Inc. w/CPC | Inc. w/CPC | Inc. w/CPC | |
| SK-501 | Staple Kit for FS-P03 | A6Y8WY1 | Inc. w/CPC | Inc. w/CPC | Inc. w/CPC | Inc. w/CPC | |

¹bizhub C3850 -- Includes PS, PCL & XPS Controller, 1 GB Standard Memory, 320 GB HDD, Standard Super G3 Fax Kit, Standard Gigabit Ethernet, Duplex Unit, 50-sheet Automatic Duplex Document Feeder, Standard USB 2.0 (supports local printing), CMYK Toner (Yield: 10K) and Imaging Units.

²CS-1 Convenience Stapler is a standalone device electronic stapler that can staple up to 50 sheets at a time. The refill staples for the CS-1 Convenience Stapler are the SK-602, which are the same refill staples found on the following Konica Minolta Finishers & Options: FS-504, FS-514, FS-517, FS-519, FS-520, FS-524, FS-527, FS-529, FS-533, FS-534, FS-534 + SD-511, SD-509.

³FS-P03 Finisher is an off-line 20-sheet stapler and can be attached to the device or mounted on the WT-P02, uses the SK-501 staples refill.

⁴When using the Copy Desk (DK-P03) two optional Paper Feed Units (PF-P13) are recommended to reach operational height.

⁵500-sheet Paper Feed Unit - Add up to 2. Total machine capacity with options is 1650 sheets.

No Copies are Included - All Copies Billed Separately
 Color Clicks @ \$.04 and B/W @ \$.007

Bizhub C-284e and Accessories

Band 2 Color

| Model | Description | Item Number | Purchase Price | 24 Month Rental | 36 Month Rental | 48 Month Rental | Picked Items |
|---|--|-------------|----------------|-----------------|-----------------|-----------------|--------------|
| Bizhub C-284e (28 PPM) | Base Contract Configuration (Copy, Print, Scan, & Fax) | | \$ 3,800.00 | \$ 182.61 | \$ 121.74 | \$ 91.31 | |
| Output Options | | | | | | | |
| FS-534 | 50-Sheet Stapling Finisher | A3EPWY1 | \$ 1,021.00 | \$ 50.95 | \$ 35.74 | \$ 30.53 | |
| FS-534 + SD 511 | 50-Sheet Stapling Finisher + Saddle Stitcher | A3EPWYA | \$ 1,841.00 | \$ 91.87 | \$ 64.44 | \$ 55.05 | |
| PK-520 | Punch Kit (2/3 Holes) for FS-534 | A3ETW11 | \$ 351.00 | \$ 17.51 | \$ 12.29 | \$ 10.49 | |
| PK-519 | 2/3 Hole Punch Unit (FS-533) | A3EUW11 | \$ 351.00 | \$ 17.51 | \$ 12.29 | \$ 10.49 | |
| Document Feeder Options | | | | | | | |
| DF-701 | Single Pass Dual Scan Document Feeder | A3CEWY1 | \$ 1,060.00 | \$ 52.89 | \$ 37.10 | \$ 31.69 | |
| Paper Supply Options (Select Only One) | | | | | | | |
| PC-410 | Large Capacity Cassette (2500 sheet Ltr) | A2XM013 | \$ 840.00 | \$ 41.92 | \$ 29.40 | \$ 25.12 | |
| PC-210 | 2-way Paper Feed Cabinet (Two 500 sheet drawers) | A2XMWY2 | \$ 712.00 | \$ 35.53 | \$ 24.92 | \$ 21.29 | |
| PC-110 | Paper Feed Cabinet (One 500 sheet drawer) | A2XMWY1 | \$ 545.00 | \$ 27.20 | \$ 19.08 | \$ 16.30 | |
| Miscellaneous Options | | | | | | | |
| KP-101 | KP-101 10-Key Pad | A64TWY1 | \$ 126.00 | \$ 6.28 | \$ 4.41 | \$ 3.77 | |
| WT-506 | Working Table | A0W4WY2 | \$ 56.00 | \$ 2.79 | \$ 1.96 | \$ 1.67 | |
| External Keyboard | External Keyboard (req's KH-102) | 7640006869 | \$ 127.20 | \$ 6.35 | \$ 4.45 | \$ 3.80 | |
| KH-102 | Keyboard Holder (for External Keyboard) | A4NRWY1 | \$ 72.50 | \$ 3.62 | \$ 2.54 | \$ 2.17 | |
| 15 Amp Digital Copier Surge Protector | 15 Amp Digital Copier Surge Protector | 15DCSP | \$ 133.50 | \$ 6.65 | \$ 4.67 | \$ 3.99 | |
| Fiery Print Controller Options | | | | | | | |
| See Universal Options Page | For Advanced Color Management | | | | | | |
| Supplies | | | | | | | |
| SK-602 | Staples for FS-533 & FS-534 (5,000 x 3) | 14YK | Inc. w/CPC | Inc. w/CPC | Inc. w/CPC | Inc. w/CPC | |
| TN-321K | Toner Black (C364/C284/C224: 27K) | A33K130 | Inc. w/CPC | Inc. w/CPC | Inc. w/CPC | Inc. w/CPC | |
| TN-321Y | Toner Yellow (C364/C284/C224: 25K) | A33K230 | Inc. w/CPC | Inc. w/CPC | Inc. w/CPC | Inc. w/CPC | |
| TN-321M | Toner Magenta (C364/C284/C224: 25K) | A33K330 | Inc. w/CPC | Inc. w/CPC | Inc. w/CPC | Inc. w/CPC | |
| TN-321C | Toner Cyan (C364/C284/C224: 25K) | A33K430 | Inc. w/CPC | Inc. w/CPC | Inc. w/CPC | Inc. w/CPC | |

No Copies Are Included - All Copies Billed Separately
 Color Clicks @ \$.04 and B/W Clicks @ \$.007

Bizhub C-364e and Accessories

Band 3 Color

| Model | Description | Item Number | Purchase Price | 24 Month Rental | 36 Month Rental | 48 Month Rental | Picked Items |
|---|--|-------------|----------------|-----------------|-----------------|-----------------|--------------|
| Bizhub C-364e (36 PPM) | Base Contract Configuration (Copy, Print, Scan, & Fax) | | \$ 4,939.76 | \$ 205.82 | \$ 137.22 | \$ 102.91 | |
| Output Options | | | | | | | |
| FS-534 | 50-Sheet Stapling Finisher | A3EPWY1 | \$ 1,021.00 | \$ 50.95 | \$ 35.74 | \$ 30.53 | |
| FS-534 + SD 511 | 50-Sheet Stapling Finisher + Saddle Stitcher | A3EPWYA | \$ 1,841.00 | \$ 91.87 | \$ 64.44 | \$ 55.05 | |
| PK-520 | Punch Kit (2/3 Holes) for FS-534 | A3ETW11 | \$ 351.00 | \$ 17.51 | \$ 12.29 | \$ 10.49 | |
| PK-519 | 2/3 Hole Punch Unit (FS-533) | A3EUW11 | \$ 351.00 | \$ 17.51 | \$ 12.29 | \$ 10.49 | |
| Document Feeder Options | | | | | | | |
| DF-701 | Single Pass Dual Scan Document Feeder | A3CEWY1 | \$ 1,060.00 | \$ 52.89 | \$ 37.10 | \$ 31.69 | |
| Paper Supply Options (Select Only One) | | | | | | | |
| PC-410 | Large Capacity Cassette (2500 sheet Ltr) | A2XM013 | \$ 840.00 | \$ 41.92 | \$ 29.40 | \$ 25.12 | |
| PC-210 | 2-way Paper Feed Cabinet (Two 500 sheet drawers) | A2XMWY2 | \$ 712.00 | \$ 35.53 | \$ 24.92 | \$ 21.29 | |
| PC-110 | Paper Feed Cabinet (One 500 sheet drawer) | A2XMWY1 | \$ 545.00 | \$ 27.20 | \$ 19.08 | \$ 16.30 | |
| Miscellaneous Options | | | | | | | |
| KP-101 | KP-101 10-Key Pad | A64TWY1 | \$ 126.00 | \$ 6.28 | \$ 4.41 | \$ 3.77 | |
| WT-506 | Working Table | A0W4WY2 | \$ 56.00 | \$ 2.79 | \$ 1.96 | \$ 1.67 | |
| External Keyboard | External Keyboard (req's KH-102) | 7640006869 | \$ 127.20 | \$ 6.35 | \$ 4.45 | \$ 3.80 | |
| KH-102 | Keyboard Holder (for External Keyboard) | A4NRWY1 | \$ 72.50 | \$ 3.62 | \$ 2.54 | \$ 2.17 | |
| 15 Amp Digital Copier Surge Protector | 15 Amp Digital Copier Surge Protector | 15DCSP | \$ 133.50 | \$ 6.65 | \$ 4.67 | \$ 3.99 | |
| Fiery Print Controller Options | | | | | | | |
| See Universal Options Page | For Advanced Color Management | | | | | | |
| Supplies | | | | | | | |
| SK-602 | Staples for FS-533 & FS-534 (5,000 x 3) | 14YK | Inc. w/CPC | Inc. w/CPC | Inc. w/CPC | Inc. w/CPC | |
| TN-321K | Toner Black (C364/C284/C224: 27K) | A33K130 | Inc. w/CPC | Inc. w/CPC | Inc. w/CPC | Inc. w/CPC | |
| TN-321Y | Toner Yellow (C364/C284/C224: 25K) | A33K230 | Inc. w/CPC | Inc. w/CPC | Inc. w/CPC | Inc. w/CPC | |
| TN-321M | Toner Magenta (C364/C284/C224: 25K) | A33K330 | Inc. w/CPC | Inc. w/CPC | Inc. w/CPC | Inc. w/CPC | |
| TN-321C | Toner Cyan (C364/C284/C224: 25K) | A33K430 | Inc. w/CPC | Inc. w/CPC | Inc. w/CPC | Inc. w/CPC | |

No Copies Included - All Billed Separately
 Color Clicks @ \$.04 and B/W Clicks @ \$.007

Bizhub C-454e and Accessories

Band 4 Color

| Model | Description | Item Number | Purchase Price | 24 Month Rental | 36 Month Rental | 48 Month Rental | Picked Items |
|---|--|-------------|----------------|-----------------|-----------------|-----------------|--------------|
| Bizhub C-454e (45 PPM) | Base Contract Configuration (Copy, Print, Scan, & Fax) | | \$ 5,944.86 | \$ 247.70 | \$ 165.13 | \$ 123.85 | |
| Output Options | | | | | | | |
| FS-534 | 50-Sheet Stapling Floor Finisher | A3EPWY1 | \$ 1,021.00 | \$ 50.95 | \$ 35.74 | \$ 30.53 | |
| FS-534 + SD 511 | 50-Sheet Stapling Floor Finisher + Saddle Stitcher | A3EPWYA | \$ 1,841.00 | \$ 91.87 | \$ 64.44 | \$ 55.05 | |
| PK-520 | Punch Kit (2/3 Holes) for FS-534 | A3ETW11 | \$ 351.00 | \$ 17.51 | \$ 12.29 | \$ 10.49 | |
| PK-519 | 2/3 Hole Punch Unit (FS-533) | A3EUW11 | \$ 351.00 | \$ 17.51 | \$ 12.29 | \$ 10.49 | |
| Paper Supply Options (Only One PC-xxx can be selected) and (Only one LU-xxx can be selected) | | | | | | | |
| PC-410 | Large Capacity Cassette (2500 sheet Ltr) for a total of 3650 sheets | A2XM013 | \$ 840.00 | \$ 41.92 | \$ 29.40 | \$ 25.12 | |
| PC-210 | 2-way Paper Feed Cabinet (Two 500 sheet drawers) | A2XMWY2 | \$ 712.00 | \$ 35.53 | \$ 24.92 | \$ 21.29 | |
| LU-301 | Large Capacity Unit (3,000 sheets/Letter) Side Unit | A03NWY2 | \$ 951.67 | \$ 47.49 | \$ 33.31 | \$ 28.45 | |
| LU-204 | Large Capacity Unit (2,500 sheets/Letter, Legal, Ledger and 12"x18") Side Unit | A0TJWY4 | \$ 1,744.65 | \$ 87.06 | \$ 61.06 | \$ 52.17 | |
| Miscellaneous Options | | | | | | | |
| KP-101 | KP-101 10-Key Pad | A64TWY1 | \$ 126.00 | \$ 6.28 | \$ 4.41 | \$ 3.77 | |
| WT-506 | Working Table | A0W4WY2 | \$ 56.00 | \$ 2.79 | \$ 1.96 | \$ 1.67 | |
| External Keyboard | External Keyboard | 7640006869 | \$ 127.20 | \$ 6.35 | \$ 4.45 | \$ 3.80 | |
| KH-102 | Keyboard Holder (for External Keyboard) | A4NRWY1 | \$ 72.50 | \$ 3.62 | \$ 2.54 | \$ 2.17 | |
| 20 Amp Digital Copier Surge Protector | 20 Amp Digital Copier Surge Protector | 20DCSP | \$ 138.85 | \$ 6.93 | \$ 4.86 | \$ 4.15 | |
| Upgrade Options - INITIAL ORDER ONLY | | | | | | | |
| Bizhub C-554e (55 PPM) | Upgrade from C-454e to C-554e (55 ppm B/W & 55 ppm Color) | C-554e | \$ 1,041.67 | \$ 43.41 | \$ 28.94 | \$ 21.70 | |
| Bizhub C-654e (65 PPM) | Upgrade from C-454e to C-654e (65 ppm B/W & 60 ppm Color) | C-654e | \$ 2,094.53 | \$ 85.33 | \$ 58.19 | \$ 43.64 | |
| Bizhub C-754e (75 PPM) | Upgrade from C-454e to C-754e (75 ppm B/W & 60 ppm Color) | C-754e | \$ 3,089.60 | \$ 128.74 | \$ 85.83 | \$ 64.37 | |
| FS-535 | 100-Sheet Stapling Finisher (Only available on C-554e, C654e, & C754e) | A2Y1WY1 | \$ 1,720.00 | \$ 85.83 | \$ 60.20 | \$ 51.43 | |
| SD-512 | Saddle Stitcher Kit (for FS-535) | A2Y2WY1 | \$ 947.00 | \$ 47.26 | \$ 33.15 | \$ 28.32 | |
| PK-521 | Punch Kit (2/3-Holes) for FS-535 | A2YRW11 | \$ 451.00 | \$ 22.50 | \$ 15.79 | \$ 13.48 | |
| ZU-606 | Z-Folding Unit (for FS-535) | A109W12 | \$ 3,561.60 | \$ 177.72 | \$ 124.66 | \$ 106.49 | |
| PI-505 | Post Inserter (for FS-535) | A10AWY1 | \$ 602.72 | \$ 30.08 | \$ 21.10 | \$ 18.02 | |
| JS-602 | Job Separator Tray (3rd Output Tray)(for FS-535) | A10CWY1 | \$ 261.29 | \$ 13.04 | \$ 9.15 | \$ 7.81 | |
| Fiery Print Controller Options | | | | | | | |
| See Universal Options Page | For Advanced Color Management | | | | | | |
| Supplies | | | | | | | |
| SK-602 | Staples for FS-533 , FS-534 , SD-511, (5,000 x 3) | 14YK | Inc. w/CPC | Inc. w/CPC | Inc. w/CPC | Inc. w/CPC | |
| TN-512K | TN-512K Toner Black (C554/C454: 27.5K) | A33K132 | Inc. w/CPC | Inc. w/CPC | Inc. w/CPC | Inc. w/CPC | |
| TN-512Y | TN-512Y Toner Yellow (C554/C454: 26K) | A33K232 | Inc. w/CPC | Inc. w/CPC | Inc. w/CPC | Inc. w/CPC | |
| TN-512M | TN-512M Toner Magenta (C554/C454: 26K) | A33K332 | Inc. w/CPC | Inc. w/CPC | Inc. w/CPC | Inc. w/CPC | |
| TN-512C | TN-512C Toner Cyan (C554/C454: 26K) | A33K432 | Inc. w/CPC | Inc. w/CPC | Inc. w/CPC | Inc. w/CPC | |

Universal Options

Works with Most Models
Please confirm compatibility before ordering

| Model | Description | Item Number | Purchase Price | 24 Month Rental | 36 Month Rental | 48 Month Rental | Picked Items |
|--|---|--------------------------|----------------|-----------------|-----------------|-----------------|--------------|
| eCopy PDF Pro Office (PDF Editor) | PDF Editor - Single User w/MA | 7640015653 | \$ 317.00 | \$ 15.82 | \$ 11.10 | \$ 9.48 | |
| CS-1 | Convenience Stapler | 7640013463 | \$ 210.94 | \$ 10.53 | \$ 7.38 | \$ 6.31 | |
| LinkCom IV - 10/100+IPDS+SCS+AS/400+S/390 | Multi-Port/External Ethernet Interface for MFP's up to 55 ppm | 7640001486 | \$ 1,595.00 | \$ 79.59 | \$ 55.83 | \$ 47.69 | |
| Card Readers | | | | | | | |
| AU-201H | HID Proximity Card Authentication Unit | 7640005064 ¹⁰ | \$ 222.60 | \$ 11.11 | \$ 7.79 | \$ 6.66 | |
| HID Proximity Card 10 Pack | HID Proximity Card 10 Pack | 7640005261 | \$ 40.28 | \$ 2.01 | \$ 1.41 | \$ 1.20 | |
| AU-202H | iClass Card Authentication Unit | 7640008394 ¹¹ | \$ 265.00 | \$ 13.22 | \$ 9.28 | \$ 7.92 | |
| AU-204H Mag Stripe card reader | AU-204H Mag Stripe card reader | 7640013468 | \$ 222.60 | \$ 11.11 | \$ 7.79 | \$ 6.66 | |
| MK-735 | Mount Kit (Internally mounts AU-201H or AU-202H Card Authentication Unit) | A4NMWY1 | \$ 30.00 | \$ 1.50 | \$ 1.05 | \$ 0.90 | |
| i-Option Kits - Please consult with Komax before ordering | | | | | | | |
| LK-102 v3 | i-Option License Kit (Enhanced PDF Encryption, PDF/A, Linearized PDF) | A0PD016 | \$ 550.00 | \$ 27.45 | \$ 19.25 | \$ 16.45 | |
| LK-104 v3 | i-Option License Kit (Voice Guidance) | A0PD017 | \$ 460.00 | \$ 22.95 | \$ 16.10 | \$ 13.75 | |
| LK-105 v3 | i-Option License Kit (Searchable PDF) | A0PD018 | \$ 401.00 | \$ 20.01 | \$ 14.04 | \$ 11.99 | |
| LK-106 v3 | i-Option License Kit (Bar Code Font) | A0PD019 | \$ 497.00 | \$ 24.80 | \$ 17.40 | \$ 14.86 | |
| LK-107 | i-Option License Kit (Unicode) | A0PD01F | \$ 415.00 | \$ 20.71 | \$ 14.53 | \$ 12.41 | |
| LK-111 | i-Option License Kit (ThinPrint Client Support) | A0PD01K ⁵ | \$ 250.00 | \$ 12.48 | \$ 8.75 | \$ 7.48 | |
| LK-108 | i-Option License Kit (OCR Font) | A0PD01G | \$ 114.00 | \$ 5.69 | \$ 3.99 | \$ 3.41 | |
| LK-101 v3 | i-Option License Kit (Web Browser) | A0PD01H | \$ 34.98 | \$ 1.75 | \$ 1.22 | \$ 1.05 | |
| UK-204 | 2 GB Memory Upgrade Kit (for i-Option) | A4MHWY1 | \$ 150.00 | \$ 7.49 | \$ 5.25 | \$ 4.49 | |
| EK-606 | USB Host Board (Local Interface Kit) | A4MJWY1 | \$ 111.00 | \$ 5.54 | \$ 3.89 | \$ 3.32 | |
| EK-607 | USB Host Board (Local Interface Kit) with Bluetooth Printing Support | A4MKWY1 | \$ 160.00 | \$ 7.98 | \$ 5.60 | \$ 4.78 | |
| SC-508 | Copy Guard Kit | A4MMWY1 | \$ 659.00 | \$ 32.88 | \$ 23.07 | \$ 19.70 | |
| Fiery Print Controller Options (For Color Bands 2-4 Only) - Please consult with Komax before ordering | | | | | | | |
| IC-414 | Image Controller (EFI Fiery Controller) | A4FRWY2 | \$ 2,572.50 | \$ 128.37 | \$ 90.04 | \$ 76.92 | |
| VI-506 | Video Interface Kit | A4MGWY1 | \$ 184.00 | \$ 9.18 | \$ 6.44 | \$ 5.50 | |
| EFI FIERY CPS V4.0 ES-2000 | Fiery Color Profiler Suite v4.0 with ES-2000 Spectrophotometer | 3000005452 | \$ 2,250.00 | \$ 112.28 | \$ 78.75 | \$ 67.28 | |
| ES-2000 | ES-2000 Spectrophotometer | 45109642 | \$ 890.00 | \$ 44.41 | \$ 31.15 | \$ 26.61 | |
| Hot Folders | Graphic Arts Feature | 7640004312 | \$ 567.10 | \$ 28.30 | \$ 19.85 | \$ 16.96 | |
| Auto Trap | Graphic Arts Feature | 7640004313 | \$ 567.10 | \$ 28.30 | \$ 19.85 | \$ 16.96 | |
| EFI Fiery SeeSequence Impose | EFI Fiery SeeSequence Impose | 7640009476 | \$ 1,722.50 | \$ 85.95 | \$ 60.29 | \$ 51.50 | |
| EFI Fiery SeeSequence Compose | EFI Fiery SeeSequence Compose | 7640009477 | \$ 795.00 | \$ 39.67 | \$ 27.83 | \$ 23.77 | |
| EFI Fiery SeeSequence Impose+Compose Suite | EFI Fiery SeeSequence Impose + Compose Suite | 7640009478 | \$ 2,120.00 | \$ 105.79 | \$ 74.20 | \$ 63.39 | |
| EFI IC-414 Productivity Package | Includes Graphic Arts Package Components, Hot Folders, Virtual Printers | 7640017030 | \$ 3,490.00 | \$ 174.15 | \$ 122.15 | \$ 104.35 | |

Content Central - Document Management System

Available on all Models

| Model | Description | Item Number | PURCHASE PRICE | 24 Month Rental | 36 Month Rental | 48 Month Rental | Picked Items |
|--|---|-------------------|-------------------|--------------------|--------------------|--------------------|-----------------|
| Content Central | Document Management Solution with up to 2 days of Installation & Training | | | | | | |
| Named User Packages | | | | | | | |
| 5 Named Users | CC Enterprise Edition – 5 Named User Licenses & 1 Year Maintenance or for Rental Term | P-CC-EE-N-0001-5 | \$ 3,945.00 | \$ 236.23 | \$ 193.31 | \$ 188.73 | |
| 10 Named Users | CC Enterprise Edition – 10 Named User Licenses & 1 Year Maintenance or for Rental Term | P-CC-EE-N-0001-10 | \$ 7,101.00 | \$ 425.21 | \$ 347.95 | \$ 339.71 | |
| 15 Named Users | CC Enterprise Edition – 15 Named User Licenses & 1 Year Maintenance or for Rental Term | P-CC-EE-N-0001-15 | \$ 10,651.50 | \$ 637.81 | \$ 521.92 | \$ 509.57 | |
| 20 Named Users | CC Enterprise Edition – 20 Named User Licenses & 1 Year Maintenance or for Rental Term | P-CC-EE-N-0001-20 | \$ 14,202.00 | \$ 850.42 | \$ 695.90 | \$ 679.42 | |
| Concurrent User Packages | | | | | | | |
| 5 Concurrent Users | CC Enterprise Edition – 5 Concurrent User Licenses & 1 Year Maintenance or for Rental Term | P-CC-EE-C-0001-5 | \$ 6,495.00 | \$ 388.92 | \$ 318.26 | \$ 310.72 | |
| 10 Concurrent Users | CC Enterprise Edition – 10 Concurrent User Licenses & 1 Year Maintenance or for Rental Term | P-CC-EE-C-0001-10 | \$ 11,691.00 | \$ 700.06 | \$ 572.86 | \$ 559.30 | |
| 15 Concurrent Users | CC Enterprise Edition – 15 Concurrent User Licenses & 1 Year Maintenance or for Rental Term | P-CC-EE-C-0001-15 | \$ 17,536.50 | \$ 1,050.09 | \$ 859.29 | \$ 838.95 | |
| 20 Concurrent Users | CC Enterprise Edition – 20 Concurrent User Licenses & 1 Year Maintenance or for Rental Term | P-CC-EE-C-0001-20 | \$ 23,382.00 | \$ 1,400.11 | \$ 1,145.72 | \$ 1,118.59 | |
| Maintenance and Professional Services | | | | | | | |
| Maintenance Plan | Additional Annual Maintenance Plans beyond the included term | S-MP-EE-X-0001 | 20% of Software | | | | |
| Professional Services | Additional Day of Professional Services (If Needed) | | \$ 750.00 | \$ 37.43 | \$ 26.25 | \$ 22.43 | |
| Content Central DMS Appliances - Hardware Only (for Software) | | | | | | | |
| Professional Appliance | Tower Server 2008 R2 64 Bit & 3 Year Maintenance on Hardware | P-AP-PA-X-0001 | \$ 2,250.00 | \$ 134.73 | \$ 110.25 | \$ 107.64 | |
| Corporate Appliance | Rack-Mount Server 2008 R2 64 Bit & 3 Year Maintenance on Hardware | P-AP-PA-X-0002 | \$ 3,800.00 | \$ 227.54 | \$ 186.20 | \$ 181.79 | |
| Enterprise Appliance | Rack-Mount Server 2008 R2 64 Bit & 3 Year Maintenance on Hardware | P-AP-PA-X-0003 | \$ 8,300.00 | \$ 497.00 | \$ 406.70 | \$ 397.07 | |

SCANPATH

Convert Scans into Searchable and Editable Documents

| Model | Description | Item Number | PURCHASE PRICE | 24 Month Rental | 36 Month Rental | 48 Month Rental | Picked Items |
|---|--|-------------|----------------|-----------------|-----------------|-----------------|--------------|
| ScanPath, connection to one MFP; Ext MA included | ScanPath, connection to one Bizhub; Ext MA included | SP20005 | \$ 1,492.00 | \$ 74.45 | \$ 52.22 | \$ 44.61 | |
| Additional ScanPath MFP connection; Extended | Additional ScanPath bizhub connection; Extended maintenance | SP20025 | \$ 545.00 | \$ 27.20 | \$ 19.08 | \$ 16.30 | |
| Optional Software | | | | | | | |
| Secure Healthcare Records Connector; Single output connector to HL7 2, HL7 3, CDA, CCD, X12, ePrescriptions; Extended year maintenance included | Secure Healthcare Records Connector; Single output connector to HL7 2, HL7 3, CDA, CCD, X12, ePrescriptions; 1 year maintenance included (Requires one or more of the above scan-to healthcare modules) Note: Must include Professional Services for configuration and installation; please consult with Prism to determine the correct number of units of KMBS Part No. 7640000794 | SP21013 | \$ 1,095.00 | \$ 54.64 | \$ 38.33 | \$ 32.74 | |
| ScanPath Workflow Module; Extended year maintenance | ScanPath Workflow Module; Extended year maintenance included | SP22001 | \$ 695.00 | \$ 34.68 | \$ 24.33 | \$ 20.78 | |
| ScanPath Follow Printing Module; Extended year maintenance included | ScanPath Follow Printing Module; Extended year maintenance included Note: Must include at least 2 hours of Professional Services for configuration and installation; order at least 2 units of KMBS Part No. 7640000794. Contact Prism for assistance and more details. | SP22002 | \$ 695.00 | \$ 34.68 | \$ 24.33 | \$ 20.78 | |
| ScanPath Scan-to Bar Code Cover Sheet Module; | ScanPath Scan-to Bar Code Cover Sheet Module; Extended year | SP22003 | \$ 849.00 | \$ 42.37 | \$ 29.72 | \$ 25.39 | |
| ScanPath Bates Stamping Module; Extended year maintenance included | ScanPath Bates Stamping Module; Extended year maintenance included Note: Must include at least 2 hours of Professional Services for configuration and installation; order at least 2 units of KMBS Part No. 7640000794. Contact Prism for assistance and more details. | SP22004 | \$ 849.00 | \$ 42.37 | \$ 29.72 | \$ 25.39 | |
| ScanPath Scan-to HealthFlow; Extended year maintenance included | ScanPath Scan-to HealthFlow; Extended year maintenance included (Note: Workflow Module included in this module) Note: Must include at least 2 hours of Professional Services for configuration and installation; order at least 2 units of KMBS Part No. 7640000794. Contact Prism for assistance and more details. | SP22005 | \$ 849.00 | \$ 42.37 | \$ 29.72 | \$ 25.39 | |
| ScanPath Scan-to HIS (such as Cerner, Meditech, etc.); | ScanPath Scan-to HIS (such as Cerner, Meditech, etc.); Extended | SP22006 | \$ 849.00 | \$ 42.37 | \$ 29.72 | \$ 25.39 | |
| ScanPath Scan-to Lab; Extended year maintenance | ScanPath Scan-to Lab; Extended year maintenance included | SP22008 | \$ 849.00 | \$ 42.37 | \$ 29.72 | \$ 25.39 | |
| ScanPath Scan-to Pharmacy; Extended year | ScanPath Scan-to Pharmacy; Extended year maintenance | SP22010 | \$ 849.00 | \$ 42.37 | \$ 29.72 | \$ 25.39 | |
| Secure Healthcare Records Connector; Single output connector to HL7 2, HL7 3, CDA, CCD, X12, ePrescriptions; 1 year maintenance included | Secure Healthcare Records Connector; Single output connector to HL7 2, HL7 3, CDA, CCD, X12, ePrescriptions; Extended year maintenance included (Requires one or more of the above scan-to healthcare modules) Note: Must include Professional Services for configuration and installation; please consult with Prism to determine the correct number of units of KMBS Part No. 7640000794 | SP22013 | \$ 1,395.00 | \$ 69.61 | \$ 48.83 | \$ 41.71 | |
| Training and Installation Options | | | | | | | |
| Project Services (Per HR) and/or Hourly Charge For Remote Training | Project Services (Per HR) and/or Hourly Charge For Remote Training | 7640000794 | \$ 225.00 | \$ 11.23 | \$ 7.88 | \$ 6.73 | |

DocRecord - Document Management System

Available on all Models

| Model | Description | Item Number | PURCHASE PRICE | 24 Month Rental | 36 Month Rental | 48 Month Rental | Picked Items |
|--------------------------------|---|-------------|----------------|-----------------|-----------------|-----------------|--------------|
| PRISM DocRecord | PRISM DocRecord | DocRecord | | | | | |
| Packages | | | | | | | |
| DocRecord, Server | DocRecord Server; includes both local and web access | DR20002 | \$ 4,995.00 | \$ 249.25 | \$ 174.83 | \$ 149.35 | |
| OCR & Barcode Engine | Automated OCR (Optical Character Recognition) and barcode reading and processing | DR20021 | \$ 500.00 | \$ 24.95 | \$ 17.50 | \$ 14.95 | |
| Automation Server | Automatically index captured files into DocRecord Server | DR20032 | \$ 3,500.00 | \$ 174.65 | \$ 122.50 | \$ 104.65 | |
| Workflow Server | Provides document workflow function for DocRecord. Also requires at least one concurrent workflow client. | DR20050 | \$ 4,995.00 | \$ 249.25 | \$ 174.83 | \$ 149.35 | |
| OCR Server | For performing OCR (optical character recognition) on mid-to-high volumes of batch-scanned documents. Recommended when batch-scanned documents are required to be full-text OCR'd. Limited to input from 25 concurrent MFPs and/or scanners. One OCR Server required per 25 scanning devices. | DR20055 | \$ 2,500.00 | \$ 124.75 | \$ 87.50 | \$ 74.75 | |
| Concurrent User (1) | Client License (1 additional concurrent user) | DR20070 | \$ 470.00 | \$ 23.45 | \$ 16.45 | \$ 14.05 | |
| Concurrent Users (5) | Client License (5 additional concurrent users) | DR20071 | \$ 2,125.00 | \$ 106.04 | \$ 74.38 | \$ 63.54 | |
| Concurrent Users (10) | Client License (10 additional concurrent users) | DR20072 | \$ 4,230.00 | \$ 211.08 | \$ 148.05 | \$ 126.48 | |
| Concurrent Users (25) | Client License (25 additional concurrent users) | DR20073 | \$ 10,500.00 | \$ 523.95 | \$ 367.50 | \$ 313.95 | |
| Workflow Concurrent User (1) | Workflow Client License (1 concurrent user) | DR20080 | \$ 300.00 | \$ 14.97 | \$ 10.50 | \$ 8.97 | |
| Workflow Concurrent Users (5) | Workflow Client License (5 concurrent users) | DR20085 | \$ 1,445.00 | \$ 72.11 | \$ 50.58 | \$ 43.21 | |
| Workflow Concurrent Users (10) | Workflow Client License (10 concurrent users) | DR20081 | \$ 2,750.00 | \$ 137.23 | \$ 96.25 | \$ 82.23 | |
| Workflow Concurrent Users (25) | Workflow Client License (25 concurrent users) | DR20082 | \$ 6,250.00 | \$ 311.88 | \$ 218.75 | \$ 186.88 | |
| Desktop Extender | Allows users, within their existing business application, to search the entire repository of documents in DocRecord based upon specific criteria. The Desktop Extender seamlessly integrates with your ERP, CRM, accounting, or other line-of-business application. | DR20100 | \$ 250.00 | \$ 12.48 | \$ 8.75 | \$ 7.48 | |

| Add - On Modules | | | | | | | |
|---|--|---------|--------------|-------------|-------------|-----------|--|
| Indexing Client | Client seat for document indexing; for batch and volume document indexing (dedicated user) | DR20090 | \$ 500.00 | \$ 24.95 | \$ 17.50 | \$ 14.95 | |
| DocRecord Data Entry, Pivot-In, User (1) | Pivot-In User (1) (dedicated user) | DR70001 | \$ 3,495.00 | \$ 174.40 | \$ 122.33 | \$ 104.50 | |
| DocRecord Data Entry, Pivot-In, User (5) | Pivot-In User (5) (dedicated user) | DR70005 | \$ 9,995.00 | \$ 498.75 | \$ 349.83 | \$ 298.85 | |
| DocRecord Data Entry, Pivot-In, User (10) | Pivot-In User (10) (dedicated user) | DR70010 | \$ 14,995.00 | \$ 748.25 | \$ 524.83 | \$ 448.35 | |
| DocRecord Data Entry, Pivot-In, User (25) | Pivot-In User (25) (dedicated user) | DR70025 | \$ 31,500.00 | \$ 1,571.85 | \$ 1,102.50 | \$ 941.85 | |
| Professional Services | | | | | | | |
| Professional Services | Professional Services Required beyond Initial 1 Day inc. in Base (per day) | PS-1D | \$ 751.00 | \$ 37.47 | \$ 26.29 | \$ 22.45 | |

DocRecord - Document Management System

Available on all Models

| Model | Description | Item Number | PURCHASE PRICE | 24 Month Rental | 36 Month Rental | 48 Month Rental | Picked Items |
|---|--|-------------|----------------|-----------------|-----------------|-----------------|--------------|
| Annual Maintenance for DocRecord and Modules | | | | | | | |
| Annual Maintenance for DR-20002 | Maintenance for DR-20002 - One year for Purchase or Term of Rental | DR20002AM | \$ 269.10 | \$ 26.86 | \$ 28.26 | \$ 32.18 | |
| Annual Maintenance for DR-20021 | Maintenance for DR-20021 - One year for Purchase or Term of Rental | DR20021AM | \$ 90.00 | \$ 8.98 | \$ 9.45 | \$ 10.76 | |
| Annual Maintenance for DR-20032 | Maintenance for DR-20032 - One year for Purchase or Term of Rental | DR20032AM | \$ 630.00 | \$ 62.87 | \$ 66.15 | \$ 75.35 | |
| Annual Maintenance for DR-20050 | Maintenance for DR-20050 - One year for Purchase or Term of Rental | DR20050AM | \$ 899.10 | \$ 89.73 | \$ 94.41 | \$ 107.53 | |
| Annual Maintenance for DR-20055 | Maintenance for DR-20055 - One year for Purchase or Term of Rental | DR20055AM | \$ 450.00 | \$ 44.91 | \$ 47.25 | \$ 53.82 | |
| Annual Maintenance for DR-20070 | Maintenance for DR-20070 - One year for Purchase or Term of Rental | DR20070AM | \$ 84.60 | \$ 8.44 | \$ 8.88 | \$ 10.12 | |
| Annual Maintenance for DR-20071 | Maintenance for DR-20071 - One year for Purchase or Term of Rental | DR20071AM | \$ 382.50 | \$ 38.17 | \$ 40.16 | \$ 45.75 | |
| Annual Maintenance for DR-20072 | Maintenance for DR-20072 - One year for Purchase or Term of Rental | DR20072AM | \$ 761.40 | \$ 75.99 | \$ 79.95 | \$ 91.06 | |
| Annual Maintenance for DR-20073 | Maintenance for DR-20073 - One year for Purchase or Term of Rental | DR20073AM | \$ 1,890.00 | \$ 188.62 | \$ 198.45 | \$ 226.04 | |
| Annual Maintenance for DR-20080 | Maintenance for DR-20080 - One year for Purchase or Term of Rental | DR20080AM | \$ 54.00 | \$ 5.39 | \$ 5.67 | \$ 6.46 | |
| Annual Maintenance for DR-20081 | Maintenance for DR-20081 - One year for Purchase or Term of Rental | DR20081AM | \$ 495.00 | \$ 49.40 | \$ 51.98 | \$ 59.20 | |
| Annual Maintenance for DR-20082 | Maintenance for DR-20082 - One year for Purchase or Term of Rental | DR20082AM | \$ 1,125.00 | \$ 112.28 | \$ 118.13 | \$ 134.55 | |
| Annual Maintenance for DR-20085 | Maintenance for DR-20085 - One year for Purchase or Term of Rental | DR20085AM | \$ 260.10 | \$ 25.96 | \$ 27.31 | \$ 31.11 | |
| Annual Maintenance for DR-20090 | Maintenance for DR-20090 - One year for Purchase or Term of Rental | DR20090AM | \$ 90.00 | \$ 8.98 | \$ 9.45 | \$ 10.76 | |
| Annual Maintenance for DR-20100 | Maintenance for DR-20100 - One year for Purchase or Term of Rental | DR20100AM | \$ 45.00 | \$ 4.49 | \$ 4.73 | \$ 5.38 | |
| Annual Maintenance for DR-70001 | Maintenance for DR-70001 - One year for Purchase or Term of Rental | DR70001AM | \$ 629.10 | \$ 62.78 | \$ 66.06 | \$ 75.24 | |
| Annual Maintenance for DR-70005 | Maintenance for DR-70005 - One year for Purchase or Term of Rental | DR70005AM | \$ 1,799.10 | \$ 179.55 | \$ 188.91 | \$ 215.17 | |
| Annual Maintenance for DR-70010 | Maintenance for DR-70010 - One year for Purchase or Term of Rental | DR70010AM | \$ 2,699.10 | \$ 269.37 | \$ 283.41 | \$ 322.81 | |
| Annual Maintenance for DR-70025 | Maintenance for DR-70025 - One year for Purchase or Term of Rental | DR70025AM | \$ 5,670.00 | \$ 565.87 | \$ 595.35 | \$ 678.13 | |

DocSystem - Document Workflow Solution

Available on most models

| Model | Description | Item Number | PURCHASE PRICE | 24 Month Rental | 36 Month Rental | 48 Month Rental | Picked Items |
|--|---|-------------|-------------------|--------------------|--------------------|--------------------|-----------------|
| PRISM DocSystem | | | | | | | |
| Packages | | | | | | | |
| WorkFlow Agent | Allows Remote User to sign/approve/update, using Signature pad(sold separately) | 7640002917 | \$ 495.00 | \$ 24.70 | \$ 17.33 | \$ 14.80 | |
| Administrator | Extra DocSystem Administrator | 7640002918 | \$ 695.00 | \$ 34.68 | \$ 24.33 | \$ 20.78 | |
| DocSystem | All features including OCR; Includes one (1) process for workflow/rules, and one (1) Administrator and unlimited Messaging Agents (Note: OCR allows for full page, zonal, and barcode recognition) | 7640012591 | \$ 1,495.00 | \$ 74.60 | \$ 52.33 | \$ 44.70 | |
| Additional Process For DocSystem | Additional process for workflow/rules. (Requires DocSystem 7640012591) | 7640012592 | \$ 995.00 | \$ 49.65 | \$ 34.83 | \$ 29.75 | |
| Maintenance per month | | | | | | | |
| Workflow Agent - 1 Month | Workflow Agent - 1 Month Maintenance | 76400030304 | \$ 7.00 | \$ 0.35 | \$ 0.25 | \$ 0.21 | |
| Administrator - 1 Month Maintenance | Administrator - 1 Month Maintenance | 76400030315 | \$ 10.00 | \$ 0.50 | \$ 0.35 | \$ 0.30 | |
| PROJECT Services | PROJECT SERVICES (PER HR) | | \$ 175.00 | \$ 8.73 | \$ 6.13 | \$ 5.23 | |
| DocSystem 1 Month Maintenance | DocSystem 1 Month Maintenance | 7640012593 | \$ 22.00 | \$ 1.10 | \$ 0.77 | \$ 0.66 | |
| Add Process DocSystem) Month Maint | Add Process DocSystem) Month Maint | 7640012594 | \$ 15.00 | \$ 0.75 | \$ 0.53 | \$ 0.45 | |
| Add - On Modules | | | | | | | |
| eCopy Connector for DocSystem | eCopy Connector for DocSystem | | \$ 695.00 | \$ 34.68 | \$ 24.33 | \$ 20.78 | |
| eCopy Connector for DocSystem - 1 Month Maintenance | eCopy Connector for DocSystem - 1 Month Maintenance | | \$ 10.43 | \$ 0.52 | \$ 0.37 | \$ 0.31 | |
| DocSystem Connector | DocSystem Integrated Connector | | \$ 495.00 | \$ 24.70 | \$ 17.33 | \$ 14.80 | |
| Training and Installation Options | | | | | | | |
| ON-SITE INSTALLATION | ON-SITE INSTALLATION | | \$ 2,500.00 | \$ 124.75 | \$ 87.50 | \$ 74.75 | |

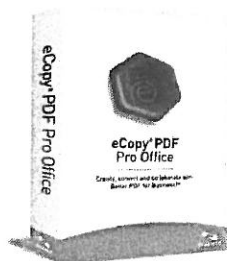
eCopy Integrated Solution V5.0
Convert Scans into Searchable and Editable Documents and it to Document Workflows such as Sharepoint
(Searchable PDF, MS Word or Excel)

| Model | Description | Item Number | Purchase Price | 24 Month Rental | 36 Month Rental | 48 Month Rental | Picked Items |
|---|--|-------------|----------------|-----------------|-----------------|-----------------|--------------|
| eCopy Integrated with bizhub | | | | | | | |
| KM Integrated ShareScan Suite v5 - 1 copy eCopy PDF | KM Integrated ShareScan Suite v5 - 1 copy eCopy PDF Pro Office | 7640014206 | \$ 5,215.00 | \$ 260.23 | \$ 182.53 | \$ 155.93 | |
| eCopy Connectors and Services for ScanStations | | | | | | | |
| Bates/Endorsement Service | Bates/Endorsement Service | 7640014251 | \$ 1,173.00 | \$ 58.53 | \$ 41.06 | \$ 35.07 | |
| Cost Recovery Service | Cost Recovery Service | 7640014254 | \$ 1,173.00 | \$ 58.53 | \$ 41.06 | \$ 35.07 | |
| Barcode Recognition Service | Barcode Recognition Service | 7640014257 | \$ 1,173.00 | \$ 58.53 | \$ 41.06 | \$ 35.07 | |
| Forms Processing Extender | Forms Processing Extender | 7640014260 | \$ 1,467.00 | \$ 73.20 | \$ 51.35 | \$ 43.86 | |
| OpenText Fax Server, RightFax Edition Connector | OpenText Fax Server, RightFax Edition Connector | 7640014266 | \$ 1,173.00 | \$ 58.53 | \$ 41.06 | \$ 35.07 | |
| OpenText DM, eDOCS Edition Connector | OpenText DM, eDOCS Edition Connector | 7640014272 | \$ 1,173.00 | \$ 58.53 | \$ 41.06 | \$ 35.07 | |
| Autonomy iManage WorkSite Connector | Autonomy iManage WorkSite Connector | 7640014275 | \$ 1,173.00 | \$ 58.53 | \$ 41.06 | \$ 35.07 | |
| EMC Documentum Connector | EMC Documentum Connector | 7640014278 | \$ 1,173.00 | \$ 58.53 | \$ 41.06 | \$ 35.07 | |
| Quick Connect Connector | Quick Connect Connector | 7640014281 | \$ 1,173.00 | \$ 58.53 | \$ 41.06 | \$ 35.07 | |
| Xerox Docushare Connector | Xerox Docushare Connector | 7640015901 | \$ 2,096.00 | \$ 104.59 | \$ 73.36 | \$ 62.67 | |
| SalesForce Connector | SalesForce Connector | 7640015904 | \$ 2,096.00 | \$ 104.59 | \$ 73.36 | \$ 62.67 | |
| HP Trim Connector | HP Trim Connector | 7640015907 | \$ 2,096.00 | \$ 104.59 | \$ 73.36 | \$ 62.67 | |
| Microsoft SharePoint Connector Server Edition | Microsoft SharePoint Connector Server Edition | 7640015910 | \$ 1,702.00 | \$ 84.93 | \$ 59.57 | \$ 50.89 | |
| Sage 50 Accounts Connector | Sage 50 Accounts Connector | 7640015913 | \$ 1,702.00 | \$ 84.93 | \$ 59.57 | \$ 50.89 | |
| Sage ACT Connector | Sage ACT Connector | 7640015916 | \$ 1,702.00 | \$ 84.93 | \$ 59.57 | \$ 50.89 | |

| eCopy Maintenance & Service | | | | | | | |
|---|---|--------------------------|-----------|---------------|---------------|---------------|--|
| eCopy ShareScan v5 Office 1 Year Maintenance and Support Add-On (SOFTWARE ONLY) | eCopy ShareScan v5 Office 1 Year Maintenance and Support Add-On (SOFTWARE ONLY) | 7640014317 | \$ 179.00 | Inc.in Rental | Inc.in Rental | Inc.in Rental | |
| eCopy ShareScan v5 Suite 1 Year Maintenance and Support Add-On (SOFTWARE ONLY) | eCopy ShareScan v5 Suite 1 Year Maintenance and Support Add-On (SOFTWARE ONLY) | 7640014318 ⁸ | \$ 359.00 | Inc.in Rental | Inc.in Rental | Inc.in Rental | |
| eCopy Connectors and Services - 1 Year Maintenance and Support Add-On | eCopy Connectors and Services - 1 Year Maintenance and Support Add-On | 7640014319 ⁹ | \$ 95.00 | Inc.in Rental | Inc.in Rental | Inc.in Rental | |
| Forms Processing Extender 1 Year Maintenance and Support Add-On | Forms Processing Extender 1 Year Maintenance and Support Add-On | 7640014574 ¹⁰ | \$ 119.00 | Inc.in Rental | Inc.in Rental | Inc.in Rental | |

eCopy® PDF Pro Office

eCopy PDF Pro Office, the latest enterprise-ready PDF solution from Nuance for every desktop that's easy to use. Automatically receive files from the eCopy ShareScan, create, convert and collaborate with PDF like never before. Nuance PDF solutions are the world's leading replacement for Adobe® Acrobat®, delivering superior speed, functionality and ease of use at a significantly lower cost.



With more than 6,000 employees and millions of business users worldwide, Nuance is a leading provider solutions for enterprise speech and customer care; mobile devices and networks; healthcare dictation and transcription; and PDF and document capture and conversion. Every day, Nuance's technologies, applications

and services make the user experience more compelling by transforming the way people interact with information and how they create, share and use documents.

Get a complete pdf solution for every desktop

Designed specifically for the business user, eCopy PDF Pro Office is intelligent and easy to use, putting commonly used creation, conversion and collaboration features just a click away. So you can enjoy incredible time savings and the flexibility of a universal document format for higher productivity and seamless information exchange.

Instantly create 100% industry-standard, universally viewable PDFs files—including all PDF and PDF/A versions—from any PC application. Convert to PDF from within Microsoft® Office documents or create PDF files of any document with a single click while browsing with Windows®.

eCopy PDF Pro Office provides the most accurate conversion of PDF files into editable, searchable XPS, Corel® WordPerfect® and Microsoft® Word, Excel® or PowerPoint documents—complete with fully-formatted text, columns, tables and graphics. It even lets you combine all pages of a PDF document into a single Excel worksheet. Support for Windows 7 Jump Lists provides quick access to recent files and common PDF creation and conversion tasks.

Combine files and remove or replace pages with drag-and-drop ease. View and select pages from a source document—Word, Excel, PowerPoint, WordPerfect, XPS, JPG, BMP or TIF—to insert into a target document. It makes document assembly faster and simpler than ever.

Enjoy cost savings without compromise

More affordable than Adobe Acrobat, eCopy PDF Pro Office lets you do more with your limited budget. It offers powerful functionality, proven reliability and remarkable ease of use in a small footprint solution that doesn't eat up resources or impede system performance. Plus, it's fully compatible with popular document management systems to give users across the enterprise controlled access to PDF files—without placing an additional burden on IT.

eCopy PDF Pro Office is fast and easy to install, too. You can conveniently service all enterprise users with network push install and software access options through virtualized software environments.

Fill and save PDF forms

Use FormTyper™ to convert static forms into fillable PDF forms that you can complete, save and email.

Scan directly to PDF

Get one-click scanning to PDF by pre-setting your scanner preferences. Scan and highlight, cross-out, underline or redact—all in a single step.

Manage multi-layer graphics

View, select, merge and flatten layers created by programs like AutoCAD® and Microsoft Visio®.

Bring multimedia to PDF

Embed Flash and Microsoft Silverlight into PDF files to create attention-grabbing multimedia documents — quickly and easily.

Protect sensitive documents

Control viewing, printing and modifications by adding passwords with secure encryption and permission controls to PDF documents. Or flatten everything in a document to protect sensitive information during file sharing or archival.

Meet accessibility standards

Automatically tag PDF files to ensure document compliance with Section 508 and other accessibility standards.

Connect to document management systems

Connect seamlessly to Microsoft® SharePoint® Services v3, Servers 2003, 2007, 2010; Autonomy iManage WorkSite 8.3, 8.5; OpenText DocsOpen 4, Connectivity Solutions (eDocs/Hummingbird) 6, 5.2 LiveLink 9.7; and LexisNexis CaseMap 8.5 for enterprise-wide document management from each user's desktop.



Users across the enterprise can collaborate more effectively with annotation tools that let you add notes, stamps, call-outs and more to PDF documents. Plus, it's easy to view, organize, prioritize and update comments using the convenient Comment Panel.

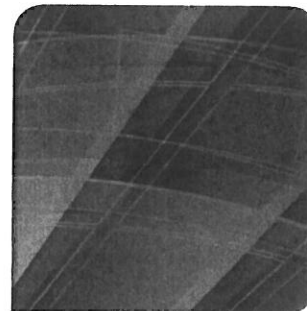
Produce impressive documents that mean business

eCopy PDF Pro Office enables you to deliver documents that look as good in print as they do on the screen—no matter where you send them. Combine any type of file and/or folder into striking PDF Portfolios that are viewable with any popular PDF reader. Add attractive, interactive cover pages that guide the audience. Even include photos, graphics, movies, audio or 3D drawings to convey messages with attention-grabbing style!

System Requirements

- A computer with an Intel® Pentium® III or higher processor or equivalent
- Supported operating systems:
 - Windows 7 32-bit and 64-bit Editions
 - Windows Vista 32-bit or 64-bit Editions with Service Pack 2
 - Windows XP 32-bit Edition with Service Pack 3
- Microsoft® Internet Explorer®7 or above
- 512 MB of memory (RAM), 1 GB recommended
- 500 MB of free hard disk space for application files plus 50 MB working space during installation
- CD-ROM drive for installation
- Web access needed for product registration, activation and obtaining live updates for the program.
- To save DOCX, XLSX and PPTX files (for Microsoft Office 2007 or 2010 Word, Excel and PowerPoint) you should have or install Microsoft .NET Framework 3.0 on Windows XP (free download available at www.microsoft.com).

Note: Performance and speed will be enhanced if your computer's processor, memory and available disk space exceed minimum requirements.

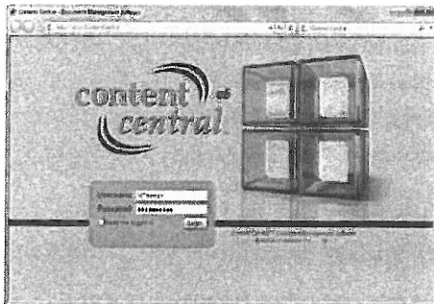


The All-In-One Browser-Based Document Management Solution

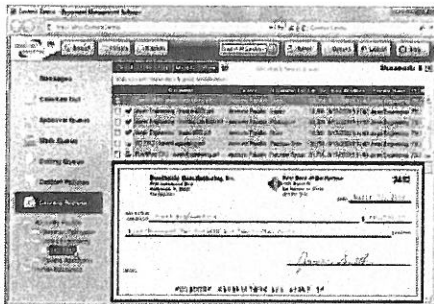
General Overview of Content Central



Content Central sets the standard for document management and workflow solutions. Users access and interact with the application by logging in using a preferred Web browser, from Internet Explorer to Mozilla Firefox and Google Chrome. Every operation occurs within this browser-based interface, from capturing, indexing, and retrieving documents to approving and distributing them.



Take advantage of the many benefits a browser-based application offers, including quick deployment, controlled & logged access, and remote connectivity. Administrators install Content Central on a single Microsoft Windows server or across multiple servers for performance. After user accounts have been defined, users connect from available Windows, Mac, or Linux computers on the network.



Inside Content Central you can create documents using PDF-based electronic forms. Documents and other files can be captured from document scanners, network folders, e-mail accounts, or user interaction. Content Central converts scanned images into fully searchable PDF files, and all documents can be retrieved using content keywords and other index information based on the type of document. Integrated e-mail and fax tools allow you and your team to distribute documents without requiring external software. A powerful workflow engine can manage your information behind the scenes based on system events or schedules.

Best of all, you receive every feature for one affordable price, paying only by the number of users required; there aren't any confusing add-on modules to worry about.

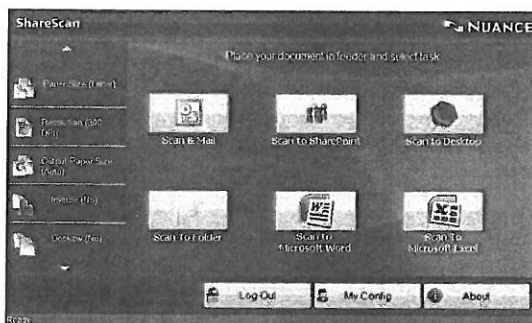
eCopy® ShareScan® Office

Every day, knowledge workers, managers, and administrative personnel need to get more done in less time by transforming paper into electronic documents. More than ever, on-demand scanning solutions are key to increasing productivity and accelerating business processes by automating workflows that anyone can access right at the copier.



eCopy ShareScan Office lets you scan paper documents and bring them into your daily collaboration, desktop publishing, and archiving workflows. In addition to secure scan-to-Email, scan-to-PC, and scan-to-file functionality, ShareScan Office can automatically convert those scanned documents into searchable PDFs or editable Microsoft Word and Microsoft Excel files and connect to your document management system.

eCopy ShareScan Office can also be expanded with numerous Nuance and partner connectors and extenders to further automate and integrate document workflows. From simple scanning to sophisticated conversion, eCopy ShareScan Office delivers exceptional speed, accuracy, productivity, and cost savings.



A simple interface enables users to quickly scan and send documents to their destination—right from the copier.

Touch screen user interface may vary by device.

eCopy ShareScan Office is the preferred MFP scanning and OCR solution to integrate paper documents into electronic office workflows. ShareScan Office captures paper-based information and brings it directly into Microsoft Office, eliminating the need to rekey, distribute, or archive paper. Built on a highly scalable, open, modular, device-independent, client-server platform, ShareScan Office delivers enterprise-grade performance and high ROI.

Features and benefits

- **The Best MFP Scanning and OCR Solution for Productivity**—Our best-in-class UI eliminates training, ensures rapid adoption, and generates the fastest ROI.
- **Superior Usability**—From single sign-on and one-button OCR and routing, to scrolling/fly-out menus and fast access to personal favorites, ShareScan Office is the easy answer streamlining paper-intensive office workflows. See a preview image, select from your personal Email address book or choose Email distribution lists—right from the copier's touch screen.
- **Automatically Convert Hardcopy Originals into Accurate, Formatted, Editable Softcopy**—Scan, convert, and edit Microsoft Word, Excel, and PDF files—including columns, graphics, and tables. You save time and money, with high accuracy and less reformatting.
- **Industry-Leading Mail and File System Integration**—Access global and personal address books and browse folders right at the copier—no need to go back to your desk to file or route documents. The “Express” mode automates routine Email distributions and sent Email appears in the user's personal “Sent Items” folder. And offline processing and notification means you can submit large batches and return to your office before completion.
- **Streamlined Archival with Flexible ECM Options**—eCopy ShareScan Office provides complete integration to content management, network folders, SQL databases, and more. Connect with your choice of leading ECMs such as SharePoint, RightFax, EMC Documentum, iManage WorkSite, OpenText DM, or OpenText eDOCS.
- **Leverage Microsoft Investments**—ShareScan office integrates with Active Directory®, Exchange, SharePoint1, Access®, as well as additional application connectors created by third-party software companies using the ShareScan SDK.
- **Lower Document-Processing Costs**—Fast, accurate recognition and conversion means you can automate more processes, improve productivity, and keep your business moving faster.



SCANPATH

SCAN TO OFFICE, WORKFLOW, SHAREPOINT, WEB

EASILY CONVERT SCANNED DOCUMENTS TO WORD, EXCEL, POWERPOINT, PDFS AND MORE. SCAN TO CUSTOM-BUILT WORKFLOWS SUCH AS ACCOUNTING, LEGAL AND HR. SEND SCANNED DOCUMENTS TO GOOGLE DRIVE, BOX, DROPBOX AND MORE. SCAN DIRECTLY TO MICROSOFT SHAREPOINT DIRECTLY INTEGRATED WITH KONICA MINOLTA BEST-ENABLED MFDS.

Easily Convert and Process Scanned Documents

- At the multifunction device (MFD) user panel, select the desired scanning or document process.
- Enter either your or another person's email address, or browse a folder on the network and select applicable folder, to which you want the file sent.
- Place your documents into the MFD document tray and select "Enter" – you're done.

Convert Scans to Editable Word, Excel, PDFs & More

- Convert scanned documents to 9 different editable document and image electronic file formats.
- ScanPath has a powerful OCR (optical character recognition) engine that recognizes the text images on a page and converts it into editable text.

Scan to Network Folders

With ScanPath, it's easy to scan and automatically deposit documents to network folders for processing by others.

Scan to Custom-built Workflows

Custom workflow processes can be created and published to the MFD panel. These workflows can be created for:

- Accounting (invoice scanning & processing, purchase orders, expense reports, etc.)
- Legal (case records, discovery records, etc.)
- HR (employee records, résumé processing, etc.)

Scan Directly to Web On-line Repositories

With ScanPath, you can automatically scan documents and images from the MFD directly to the following web repositories: Google Drive, Dropbox, Box, Picasa, Microsoft SkyDrive, and Evernote. Your on-line log-in information is securely stored in ScanPath so you can log into both the MFD and your on-line document repositories at the same time.

Scan Directly to SharePoint

You can also automatically file documents scanned from the MFD directly into Microsoft SharePoint. Saves time and improves efficiencies.

Scan with barcode cover sheet

A barcode cover sheet can be used for documents that cannot be OCR'd directly, due to quality or being handwritten. This works with all documents, regardless of their quality or consistency, and is ideal when working with multi-page documents that are being batch-scanned.

Follow Printing & Secure Release

Securely release your print jobs from either a web-enabled mobile device (such as a smart phone or tablet), PC, or from the user panel of the MFD. Provides convenient follow and secure printing to unlimited users.

Integrated Bates Stamping

Scan directly to pre-defined Bates stamping profiles from the user panel of the MFD. Bates stamping profiles include document serialization, naming, dates, and much more. It's easy for legal firms and departments to establish Bates stamping profiles for different cases and clients.

Microsoft Outlook Integration

Emails sent by ScanPath from the MFD appear in the users Outlook Sent folder. Allows users to easily keep track of all emails from his/her desktop.

Multiple MFD Machine Profiles

Each MFD can have a different configuration and profile allowing maximum flexibility in multi-MFD environments. Ideal when different departments require different MFD profiles and capabilities.

ScanPath Licensed by MFD

ScanPath resides on a non-dedicated, local Microsoft Windows-based server within the user's organization. A single ScanPath can handle up to 50 separate MFDs. There are no restrictions on the number of people using ScanPath at each MFD; however, each MFD does require a ScanPath license.

Monochrome Band 1
Bizhub 3320



Color Band 1
Bizhub C3850



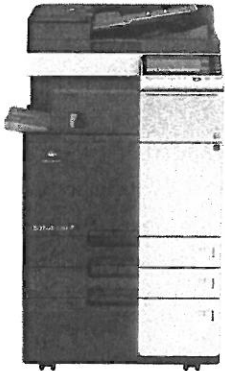
Monochrome bands 2 - 7

Bizhub 284e/364e/454e/554e/654e/754e

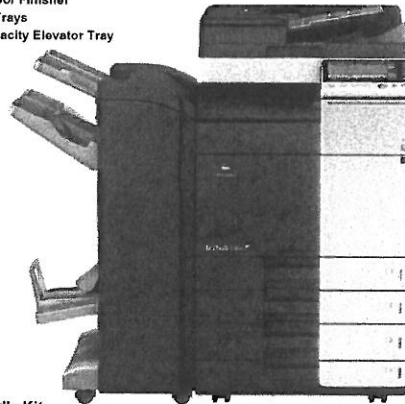
Color Bands 2-4

Bizhub C284e/C364e/C454e/C554e/C654e/C754e

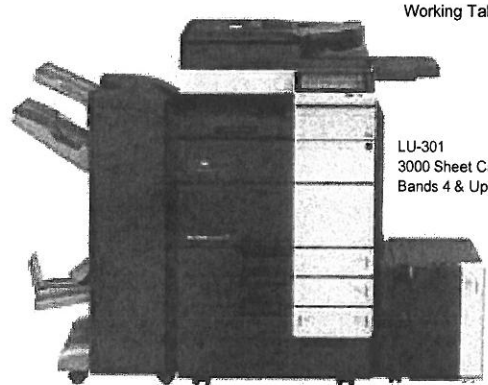
FS-533 Inner Finisher
Single Output Tray



FS-534 Floor Finisher
3 Output Trays
Large Capacity Elevator Tray



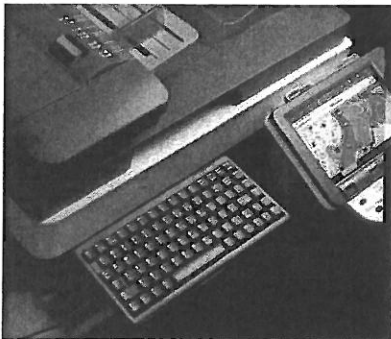
SD-511 Saddle Kit
For Folding



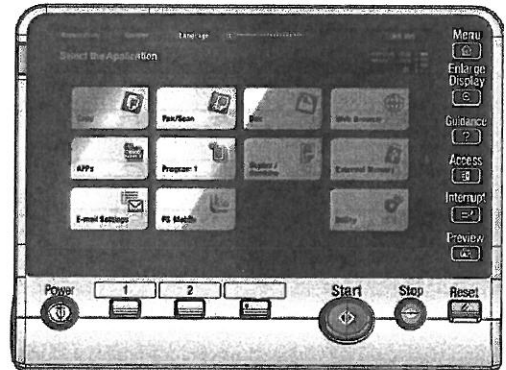
Working Table

LU-301
3000 Sheet Cassette
Bands 4 & Up

Optional External Keyboard



Control Panel



Pictures may be showing optional items

General Ordering Information – DIGCOP12

Ordering Address and Procedures

Orders will be accepted for the State of West Virginia - State Agencies and Political Subdivisions within the State of West Virginia. All orders must be placed as follows:

KOMAX Business Systems
500 "D" Street
South Charleston, WV 25303
Phone: 888-483-7440 or (304) 744-7440
Fax: (304) 744-7450
Attn: David Humphrey

Information on orders, invoices, payments, etc. should be directed to the number indicated above. Facsimile purchase orders are acceptable. Purchase orders made out to Konica Minolta or other authorized dealers will not be accepted.

All purchase orders must include the following information:

- The purchase Order Number
- The Contract Number (DIGCOP12)
- Band & Model Number
- Additional accessories ordered (please list separately)
- Quantity of items being ordered
- Purchase or Rental Price of items ordered
- Contact name and phone number, and delivery address. Also meter contact information if different.
- If connected for scanning/printing, must include Office of Technology Approval Letter
- Send WV-39 with Request to Consulting.Services@WV.gov

Payment Terms:

Net thirty (30) days

Delivery:

Please allow up to thirty (30) days after receipt of order (unless notified otherwise by KOMAX). For better delivery accuracy, you can process a PO 60-90 days early, and specify the Start Date.

Transportation, delivery, installation and training:

FOB Destination

Copier/Printer Product Questions:

All inquiries regarding product information, demos, etc. should be directed to:

David Humphrey
State Contract Manager
888-483-7440 or (304) 744-7440
Fax(304) 744-7450
dhumphrey@komaxwv.com