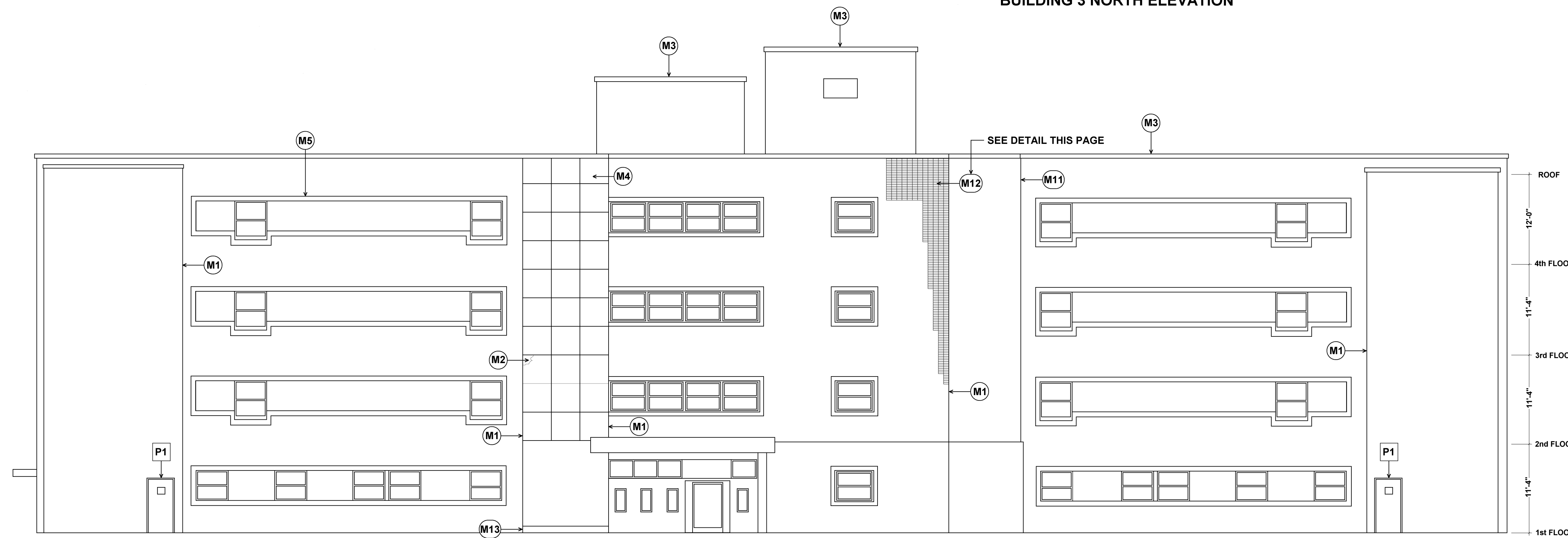
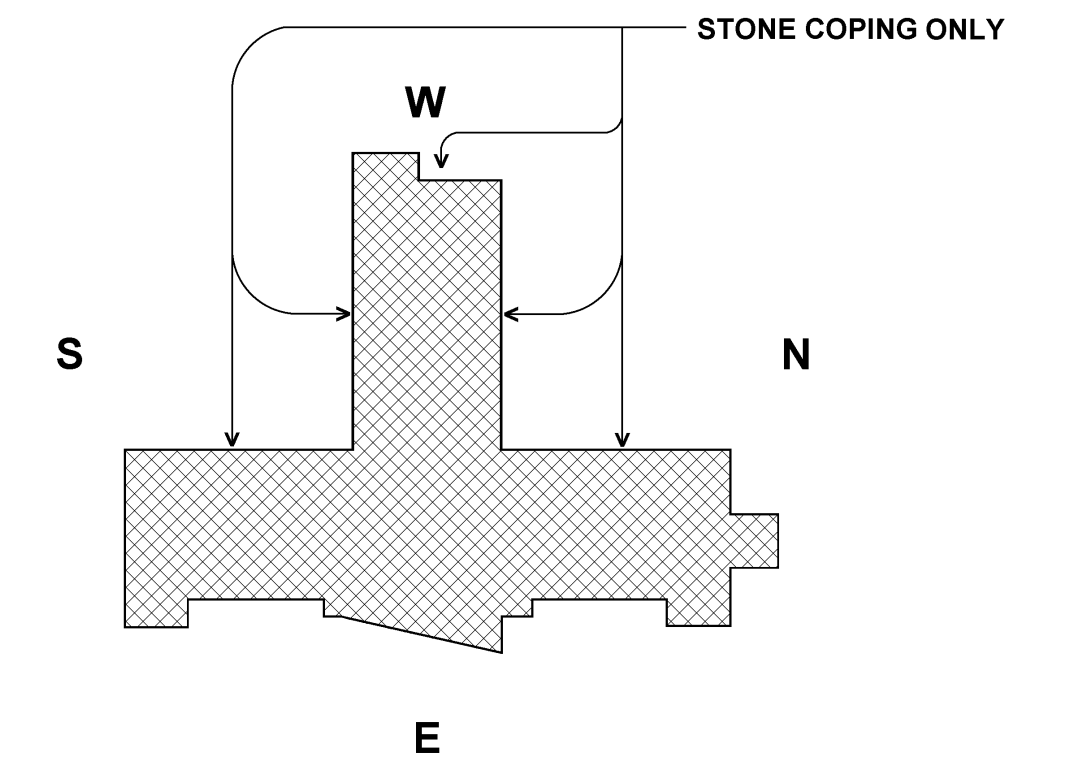


BUILDING 3 NORTH ELEVATION



BUILDING 3 EAST ELEVATION

EXHIBIT "A"



GENERAL MASONRY NOTES :

1. SAW-CUT 3/4" DEEP EXISTING 1/16" OR WIDER CRACKS AND TUCKPOINT MORTAR JOINT TO MATCH EXISTING (EXCLUDES WEST ELEVATION ENTIRELY)
2. REMOVE ALL EXPOSED ANCHORS AND PATCH TO MATCH EXISTING (EXCLUDES WEST ELEVATION ENTIRELY)
3. PATCH ALL ABANDONED THROUGH WALL PENETRATIONS
4. CHEMICALLY CLEAN ALL MASONRY AFTER ALL OTHER MASONRY WORK IS COMPLETE
5. CONTRACTOR RESPONSIBLE TO FIELD VERIFY EXTENT OF WORK REQUIRED TO ACHIEVE WATER-TIGHT CONDITIONS (NOT LIMITED TO DRAWINGS)

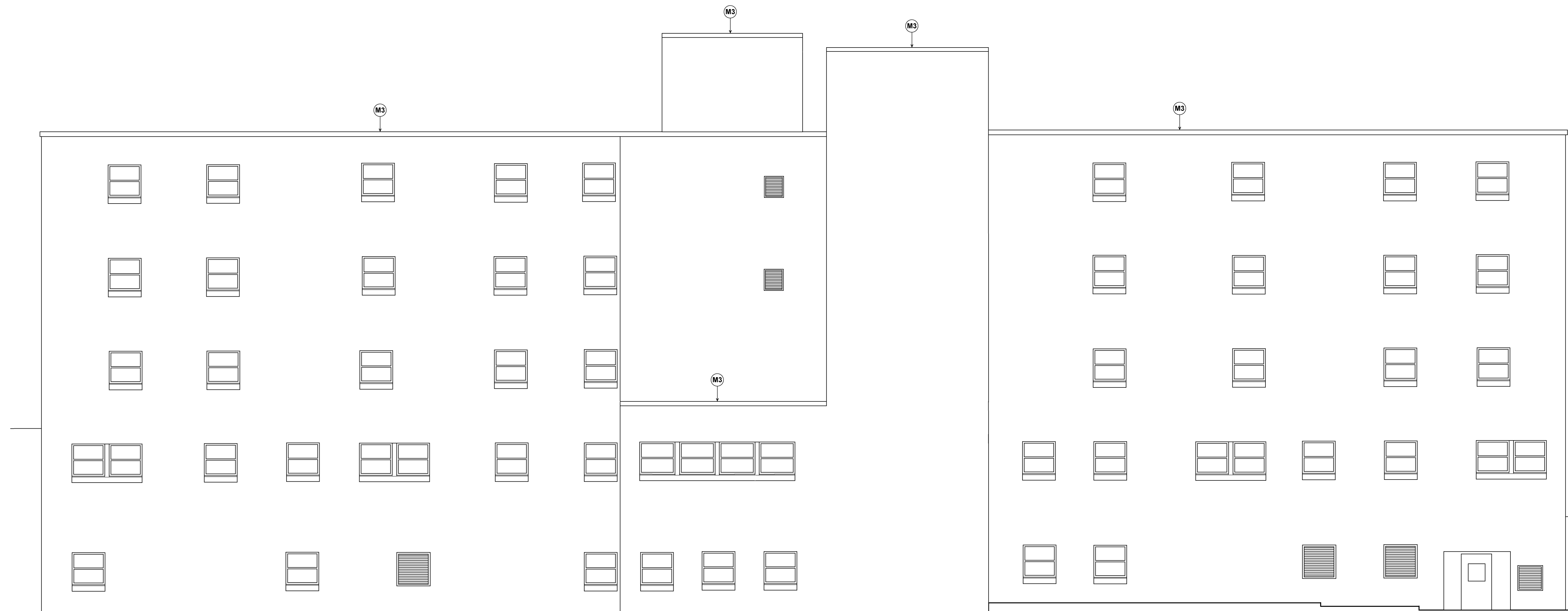
M# MASONRY NOTES :

- M1. SAW-CUT JOINT (FULL HEIGHT) AND CAULK WITH APPROVED CAULKING
- M2. PATCH STONE TO MATCH EXISTING (APPROVED STONE PATCH)
- M3. SAW-CUT HEAD JOINTS & BED JOINTS AND CAULK WITH APPROVED CAULKING (TYPICAL AT ALL STONE COPING)
- M4. SAW-CUT ALL EXISTING MORTAR JOINTS AND CAULK WITH APPROVED CAULKING (STONE PANELS ONLY)
- M5. SAW-CUT ALL EXISTING JOINTS AND CAULK WITH APPROVED CAULKING (TYPICAL AT ALL STONE SURROUNDS)
- M6. SAW-CUT JOINT FULL HEIGHT INSTALL BACKER ROD AND CAULK WITH APPROVED CAULKING
- M7. SAW-CUT BED JOINT 3/4" DEEP AND CAULK WITH APPROVED CAULKING
- M8. REMOVE AND REPLACE EXISTING DAMAGED BRICK, APPROXIMATELY 5 INDIVIDUAL BRICK LOCATED BELOW STONE COPING
- M9. SAW-CUT AND CAULK JOINT ABOVE ROOF FLASHING
- M10. SAW-CUT 3/4" DEEP EXISTING 1/16" OR WIDER CRACKS AND TUCKPOINT MORTAR JOINTS TO MATCH EXISTING
- M11. REPAIR MORTAR JOINTS NORTH SIDE RETURN
- M12. REMOVE, CLEAN AND REINSTALL SALVAGED BRICK, FURNISH AND INSTALL NEW VENEER ANCHORS, SECURE EXISTING BRICK AS NEEDED TO PREVENT FUTHER DAMAGE
- M13. REPAIR DAMAGED BRICK
- M14. SAW-CUT 3/4" DEEP EXISTING 1/16" OR WIDER CRACKS AT MORTAR JOINTS / FACE BRICK AND CAULK WITH APPROVED CAULKING
- M15. REMOVE 4 COURSES OF BRICK ABOVE STONE BAND OVER 4TH FLOOR WINDOWS, INSTALL NEW FLASHING AND WEEPS AT 2'-0" O.C. AND REINSTALL BRICK (APPROXIMATELY 120')
REPLACE DAMAGED LINTELS (ALLOW FOR 40' IN BASE BID)
- M16. REMOVE ALL DEFECTIVE MATERIAL AT WINDOW HEADS AND JAMBS, CAULK ENTIRE PERIMETER WITH APPROVED CAULKING
- M17. CUT-OUT / REMOVE MORTAR AT ALL LINTEL BEARING LOCATIONS (APPROXIMATELY 8" EACH SIDE OF WINDOW HEAD) AND CAULK WITH APPROVED CAULKING (TYPICAL, ALL WINDOWS INCLUDED)
- M18. CAULK TRANSITION FROM TOP OF EXPOSED LINTEL TO BOTTOM OF FIRST COURSE OF BRICK (TYPICAL, ALL WINDOWS INCLUDED)

P# PAINTING NOTES :

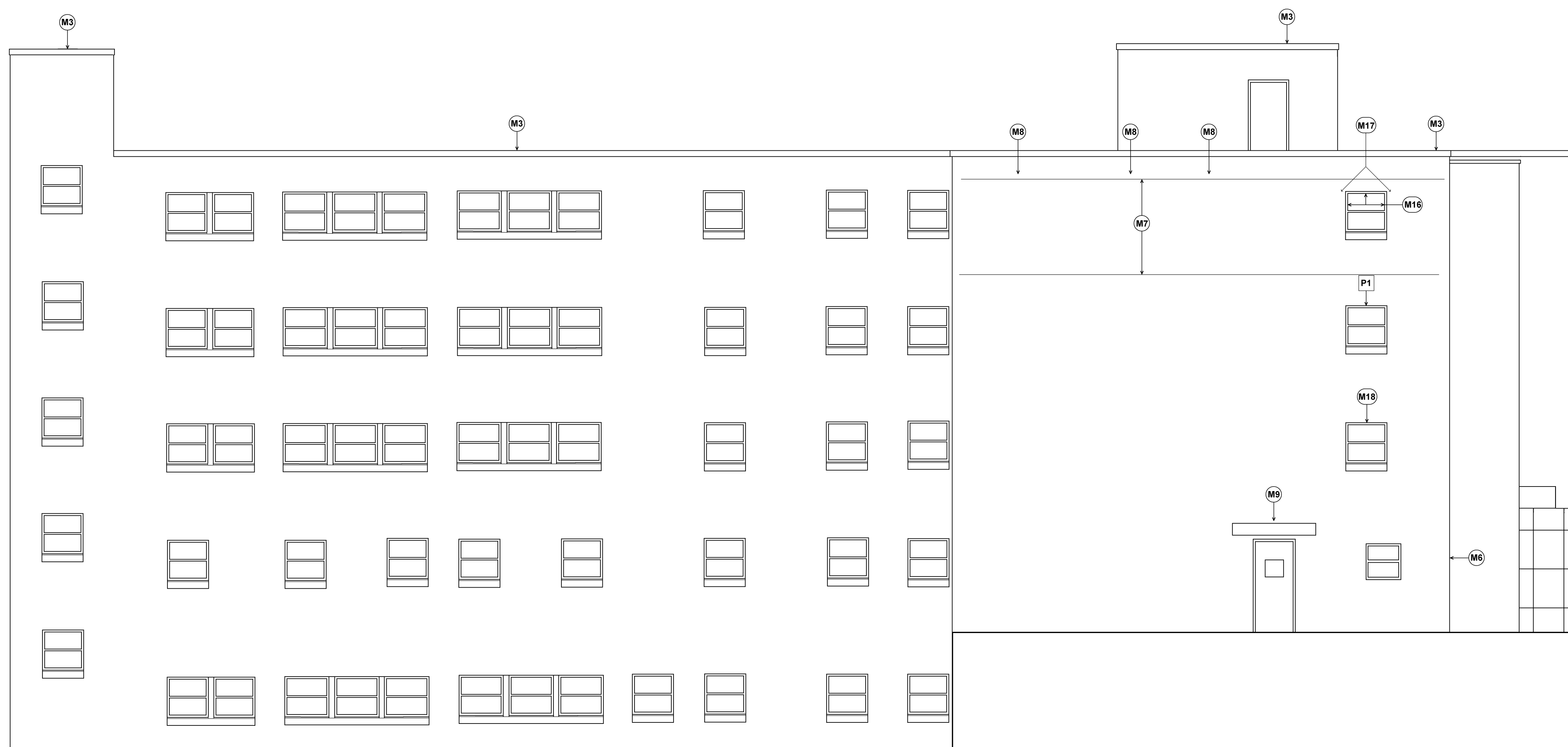
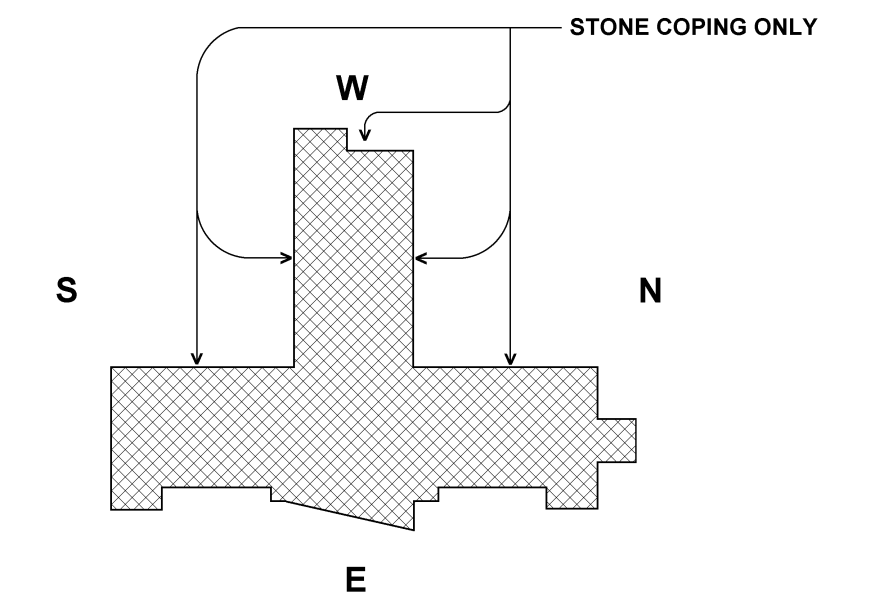
- P1. BRUSH, CLEAN AND PAINT ALL EXPOSED LINTELS WITH APPROVED PAINT

NOT TO SCALE



BUILDING 3 WEST ELEVATION

EXHIBIT "B"



BUILDING 3 SOUTH ELEVATION

GENERAL MASONRY NOTES :

1. SAW-CUT 3/4" DEEP EXISTING 1/16" OR WIDER CRACKS AND TUCKPOINT MORTAR JOINT TO MATCH EXISTING (EXCLUDES WEST ELEVATION ENTIRELY)
2. REMOVE ALL EXPOSED ANCHORS AND PATCH TO MATCH EXISTING (EXCLUDES WEST ELEVATION ENTIRELY)
3. PATCH ALL ABANDONED THROUGH WALL PENETRATIONS
4. CHEMICALLY CLEAN ALL MASONRY AFTER ALL OTHER MASONRY WORK IS COMPLETE
5. CONTRACTOR RESPONSIBLE TO FIELD VERIFY EXTENT OF WORK REQUIRED TO ACHIEVE WATER-TIGHT CONDITIONS (NOT LIMITED TO DRAWINGS)

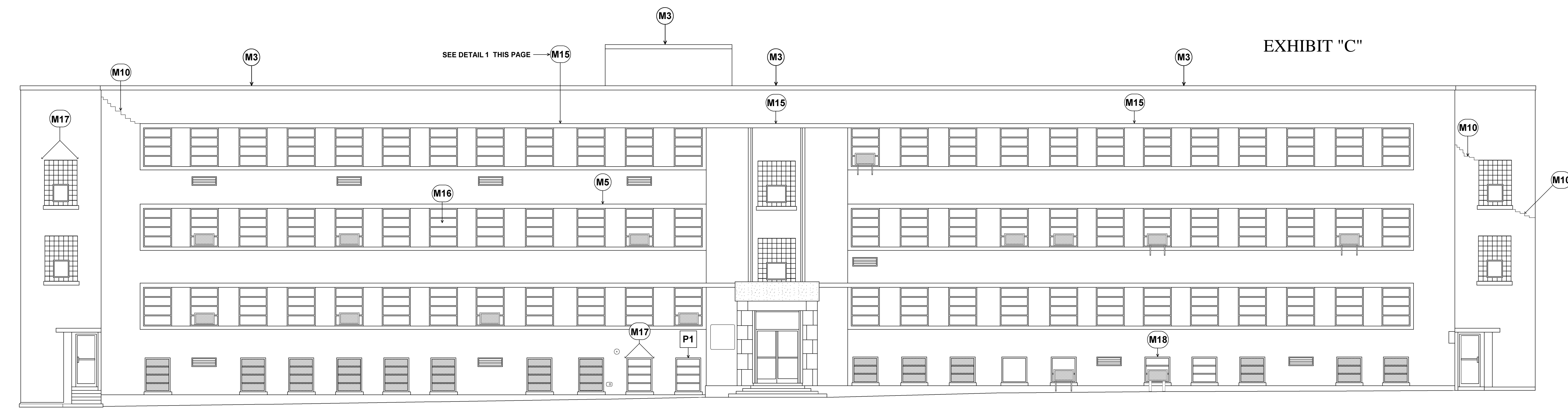
Masonry Notes :

- M1. SAW-CUT JOINT (FULL HEIGHT) AND CAULK WITH APPROVED CAULKING
- M2. PATCH STONE TO MATCH EXISTING (APPROVED STONE PATCH)
- M3. SAW-CUT HEAD JOINTS & BED JOINTS AND CAULK WITH APPROVED CAULKING (TYPICAL AT ALL STONE COPING)
- M4. SAW-CUT ALL EXISTING MORTAR JOINTS AND CAULK WITH APPROVED CAULKING (STONE PANELS ONLY)
- M5. SAW-CUT ALL EXISTING JOINTS AND CAULK WITH APPROVED CAULKING (TYPICAL AT ALL STONE SURROUNDS)
- M6. SAW-CUT JOINT FULL HEIGHT INSTALL BACKER ROD AND CAULK WITH APPROVED CAULKING
- M7. SAW-CUT BED JOINT 3/4" DEEP AND CAULK WITH APPROVED CAULKING
- M8. REMOVE AND REPLACE EXISTING DAMAGED BRICK, APPROXIMATELY 5 INDIVIDUAL BRICK LOCATED BELOW STONE COPING
- M9. SAW-CUT AND CAULK JOINT ABOVE ROOF FLASHING
- M10. SAW-CUT 3/4" DEEP EXISTING 1/16" OR WIDER CRACKS AND TUCKPOINT MORTAR JOINTS TO MATCH EXISTING
- M11. REPAIR MORTAR JOINTS NORTH SIDE RETURN
- M12. REMOVE, CLEAN AND REINSTALL SALVAGED BRICK, FURNISH AND INSTALL NEW VENER ANCHORS, SECURE EXISTING BRICK AS NEEDED TO PREVENT FUTHER DAMAGE
- M13. REPAIR DAMAGED BRICK
- M14. SAW-CUT 3/4" DEEP EXISTING 1/16" OR WIDER CRACKS AT MORTAR JOINTS (FACE BRICK AND CAULK WITH APPROVED CAULKING
- M15. REMOVE 4 COURSES OF BRICK ABOVE STONE BAND OVER 4TH FLOOR WINDOWS, INSTALL NEW FLASHING AND WEEPS AT 2'-0" O.C. AND REINSTALL BRICK (APPROXIMATELY 120')
REPLACE DAMAGED LINTELS (ALLOW FOR 40' IN BASE BID)
- M16. REMOVE ALL DEFECTIVE MATERIAL AT WINDOW HEADS AND JAMBS, CAULK ENTIRE PERIMETER WITH APPROVED CAULKING
- M17. CUT-OUT / REMOVE MORTAR AT ALL LINTEL BEARING LOCATIONS
- M18. CAULK TRANSITION FROM TOP OF EXPOSED LINTEL TO BOTTOM OF FIRST COURSE OF BRICK (TYPICAL, ALL WINDOWS INCLUDED)

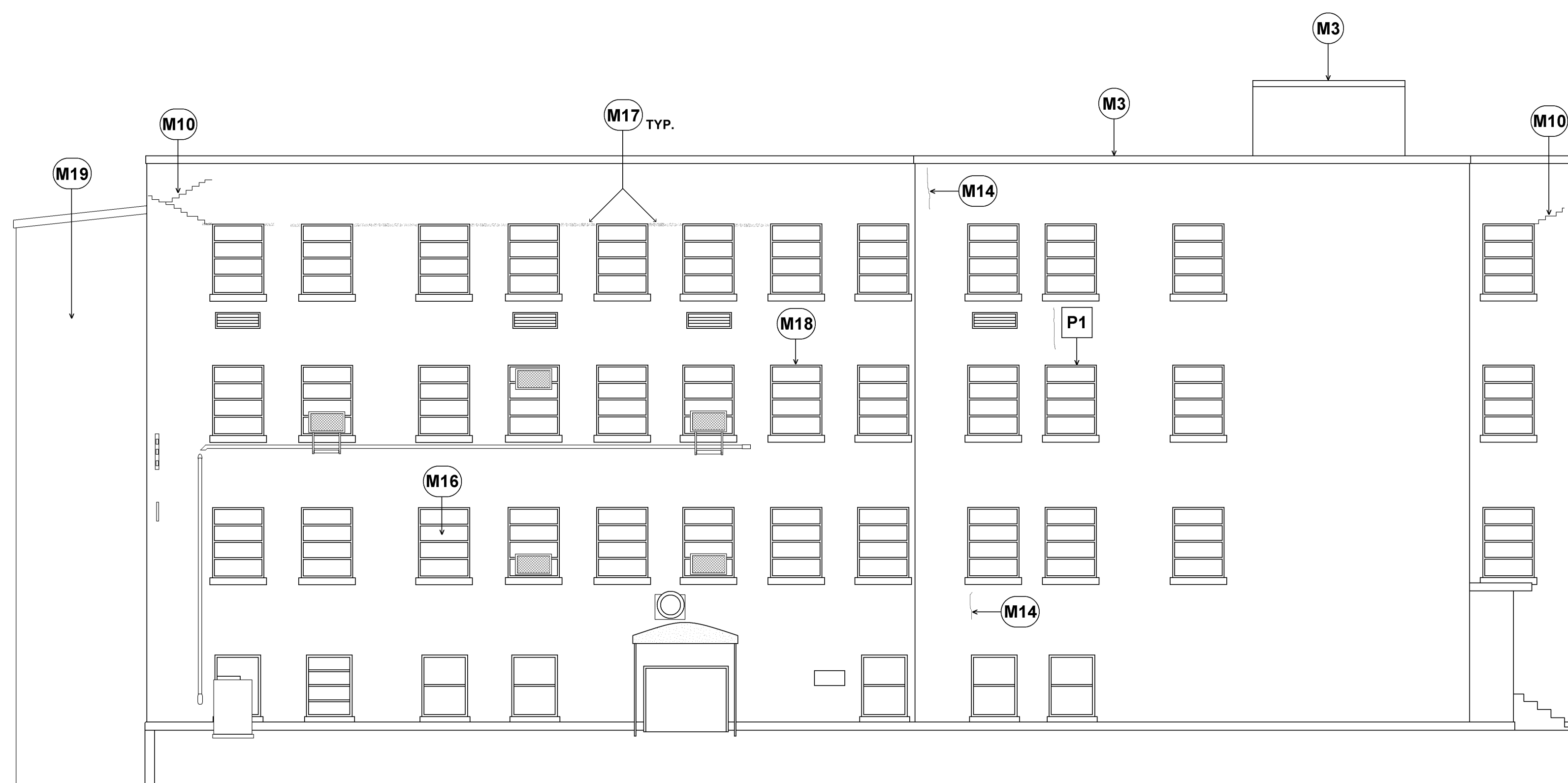
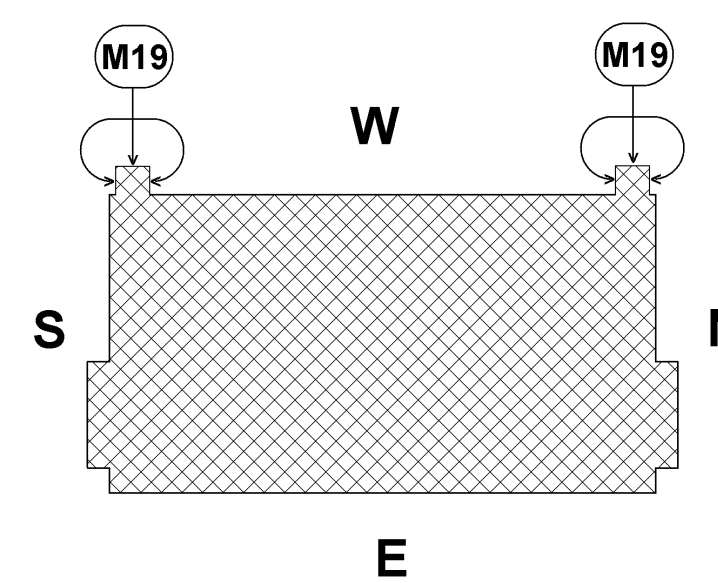
Painting Notes :

- P1. BRUSH, CLEAN AND PAINT ALL EXPOSED LINTELS WITH APPROVED PAINT

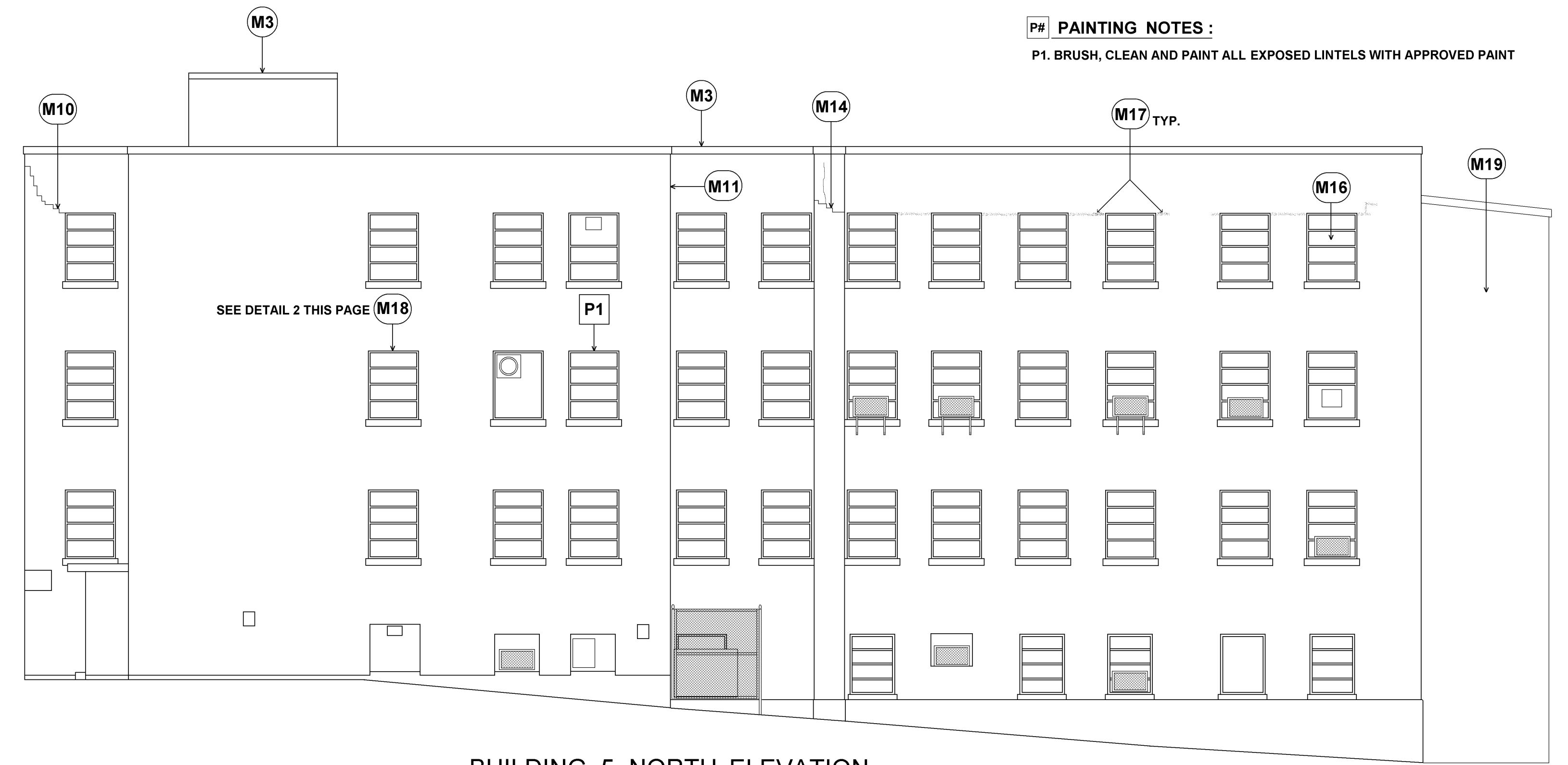
NOT TO SCALE



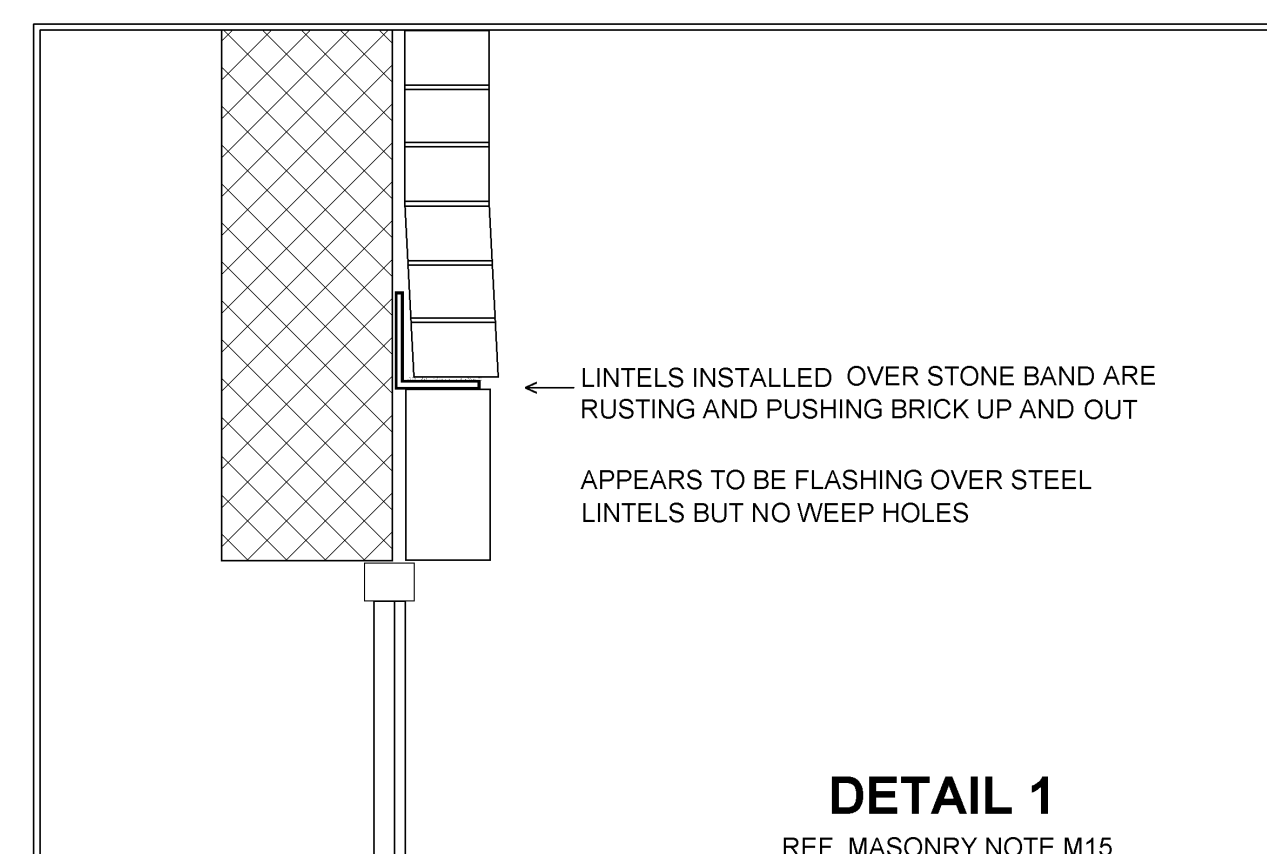
BUILDING 5 EAST ELEVATION



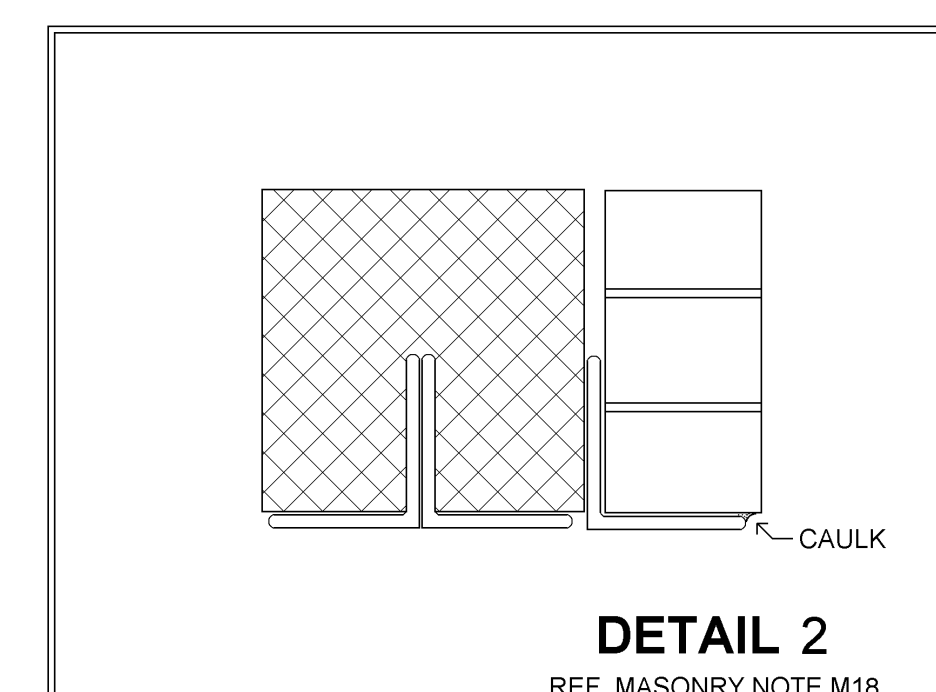
BUILDING 5 SOUTH ELEVATION



BUILDING 5 NORTH ELEVATION



DETAIL 1
REF. MASONRY NOTE M15



DETAIL 2
REF. MASONRY NOTE M18

GENERAL MASONRY NOTES :

1. SAW-CUT 3/4" DEEP EXISTING 1/16" OR WIDER CRACKS AND TUCKPOINT MORTAR JOINT TO MATCH EXISTING (EXCLUDES WEST ELEVATION ENTIRELY)
2. REMOVE ALL EXPOSED ANCHORS AND PATCH TO MATCH EXISTING (EXCLUDES WEST ELEVATION ENTIRELY)
3. PATCH ALL ABANDONED THROUGH WALL PENETRATIONS
4. CHEMICALLY CLEAN ALL MASONRY AFTER ALL OTHER MASONRY WORK IS COMPLETE
5. CONTRACTOR RESPONSIBLE TO FIELD VERIFY EXTENT OF WORK REQUIRED TO ACHIEVE WATER-TIGHT CONDITIONS (NOT LIMITED TO DRAWINGS)

M MASONRY NOTES :

- M1. SAW-CUT JOINT FULL HEIGHT AND CAULK WITH APPROVED CAULKING
- M2. PATCH STONE TO MATCH EXISTING (APPROVED STONE PATCH)
- M3. SAW-CUT HEAD JOINTS & BED JOINTS AND CAULK WITH APPROVED CAULKING (TYPICAL AT ALL STONE COPING)
- M4. SAW-CUT ALL EXISTING MORTAR JOINTS AND CAULK WITH APPROVED CAULKING (STONE PANELS ONLY)
- M5. SAW-CUT ALL EXISTING JOINTS AND CAULK WITH APPROVED CAULKING (TYPICAL AT ALL STONE SURROUNDS)
- M6. SAW-CUT JOINT FULL HEIGHT INSTALL BACKER ROD AND CAULK WITH APPROVED CAULKING
- M7. SAW-CUT BED JOINT 3/4" DEEP AND CAULK WITH APPROVED CAULKING
- M8. REMOVE AND REPLACE EXISTING DAMAGED BRICK, APPROXIMATELY 5 INDIVIDUAL BRICK LOCATED BELOW STONE COPING
- M9. SAW-CUT AND CAULK JOINT ABOVE ROOF FLASHING
- M10. SAW-CUT 3/4" DEEP EXISTING 1/16" OR WIDER CRACKS AND TUCKPOINT MORTAR JOINTS TO MATCH EXISTING
- M11. REPAIR MORTAR JOINTS WEST SIDE RETURN
- M12. REMOVE, CLEAN AND REINSTALL SALVAGED BRICK, FURNISH AND INSTALL NEW VENEER ANCHORS, SECURE EXISTING BRICK AS NEEDED TO PREVENT FUTHER DAMAGE
- M13. REPAIR DAMAGED BRICK
- M14. SAW-CUT 3/4" DEEP EXISTING 1/16" OR WIDER CRACKS AT MORTAR JOINTS / FACE BRICK AND CAULK WITH APPROVED CAULKING
- M15. REMOVE 4 COURSES OF BRICK ABOVE STONE BAND OVER 4TH FLOOR WINDOWS, INSTALL NEW FLASHING AND WEEPS AT 2'-0" O.C. AND REINSTALL BRICK (APPROXIMATELY 120')
REPLACE DAMAGED LINTELS (ALLOW FOR 40' IN BASE BID)
- M16. REMOVE ALL DEFECTIVE MATERIAL AT WINDOW HEADS AND JAMBS, CAULK ENTIRE PERIMETER WITH APPROVED CAULKING
- M17. CUT-OUT / REMOVE MORTAR AT ALL LINTEL BEARING LOCATIONS (APPROXIMATELY 8" EACH SIDE OF WINDOW HEAD) AND CAULK WITH APPROVED CAULKING (TYPICAL, ALL WINDOWS INCLUDED)
- M18. CAULK TRANSITION FROM TOP OF EXPOSED LINTEL TO BOTTOM OF FIRST COURSE OF BRICK (TYPICAL, ALL WINDOWS INCLUDED)
- M19. REMOVE ALL CAULK FROM JOINTS AND APPLY APPROVED CAULKING AT ALL JOINTS AND STRESS CRACKS IN PANELS (SEE FOOTPRINT)

P P PAINTING NOTES :

- P1. BRUSH, CLEAN AND PAINT ALL EXPOSED LINTELS WITH APPROVED PAINT

NOT TO SCALE