

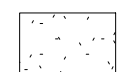

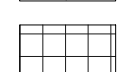
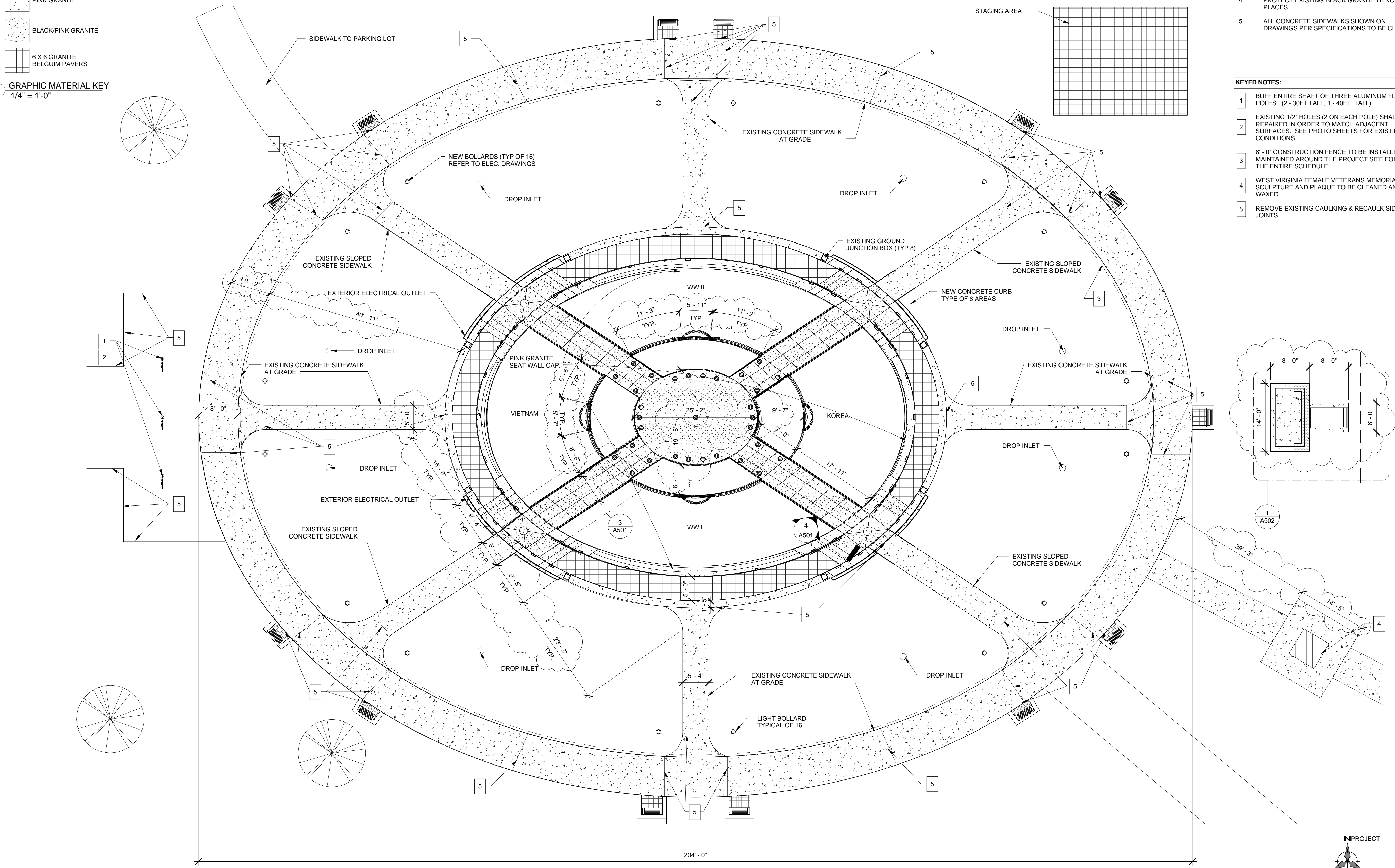


-  CONCRETE
-  LIMESTONE
-  PINK GRANITE
-  BLACK/PINK GRANITE
-  6 X 6 GRANITE BELGIUM PAVERS

GRAPHIC MATERIAL KEY
1/4" = 1'-0"

- GENERAL NOTES:
1. EXISTING LAWN DRAINS SHALL BE PROTECTED IN PLACE.
 2. COORDINATE SITE WORK WITH MEP AND WATERPROOFING DRAWINGS.
 3. ENSURE UNOBSTRUCTED ACCESS TO FLAG POLES
 4. PROTECT EXISTING BLACK GRANITE BENCHES IN PLACES
 5. ALL CONCRETE SIDEWALKS SHOWN ON DRAWINGS PER SPECIFICATIONS TO BE CLEANED

- KEYED NOTES:
- 1 BUFF ENTIRE SHAFT OF THREE ALUMINUM FLAG POLES. (2 - 30FT TALL, 1 - 40FT. TALL)
 - 2 EXISTING 1/2" HOLES (2 ON EACH POLE) SHALL BE REPAIRED IN ORDER TO MATCH ADJACENT SURFACES. SEE PHOTO SHEETS FOR EXISTING CONDITIONS.
 - 3 6' - 0" CONSTRUCTION FENCE TO BE INSTALLED AND MAINTAINED AROUND THE PROJECT SITE FOR THE ENTIRE SCHEDULE.
 - 4 WEST VIRGINIA FEMALE VETERANS MEMORIAL SCULPTURE AND PLAQUE TO BE CLEANED AND WAXED.
 - 5 REMOVE EXISTING CAULKING & RECAULK SIDEWALK JOINTS



PROJECT:
VETERANS MEMORIAL
WV CAPITOL CAMPUS
STATE OF WV GENERAL SERVICES DIVISION
SITE PLAN

Drawing Set Number

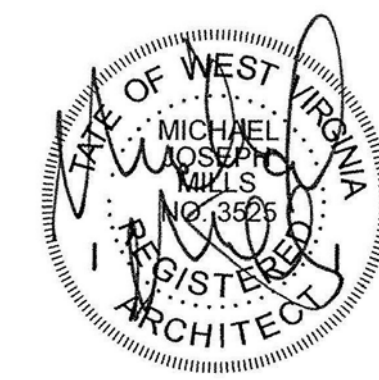
Revision Schedule		
No.	Revision	Date
1	REVISION #1	01-24-14

INTENDED DRAWING USE:	Conceptual
	BIDDING
	Review
	Permitting
	Bidding
	Construction Documents

Project number	13069
Date	09-20-2013
Drawn by	CVM
Checked by	MM

C101
Scale As indicated

1 SITE PLAN
1" = 10'-0"



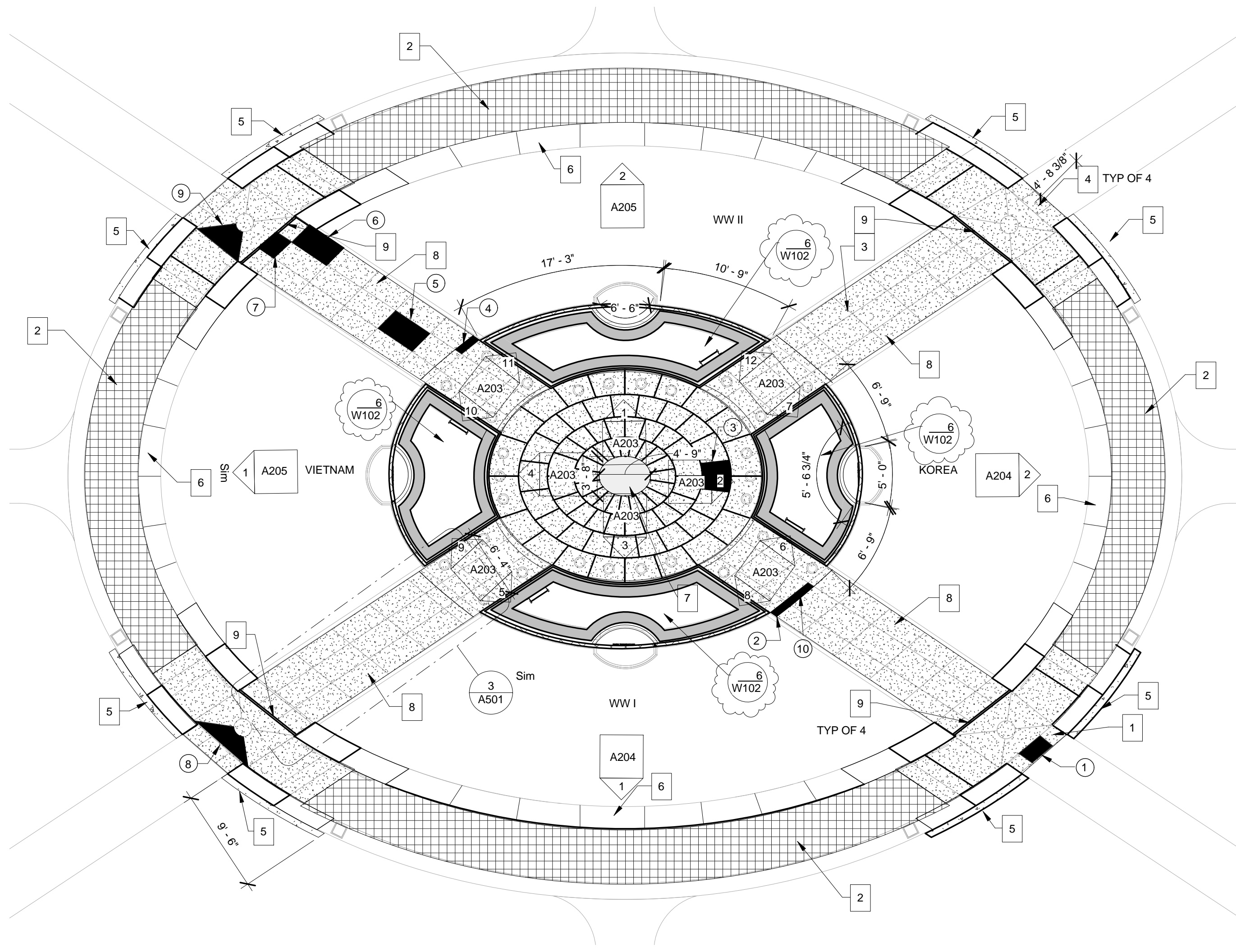
GENERAL NOTES:

1. REMOVE ALL CAULKING/SEALANT AT PLAZA JOINT
2. THE BASE OF THE PERIMETER 6X6 GRANITE SIDEWALK SHALL BE TRENCHED, BUT CONCRETE CURB TO BE PRESERVED. SEE STRUCTURAL DETAILS
3. SEE DETAILS 9/W102, 4/W103, 5/W103 FOR BASIN PENETRATIONS

KEYED NOTES: (NEW WORK)

1. INSTALL BRONZE THRESHOLD TO MATCH EXISTING AT THREE OTHER LOCATIONS
2. RE-INSTALL 6X6 GRANITE PAVER FIELD INFILL ON MORTAR SETTING BED WITH MORTAR FACE JOINT BETWEEN PAVERS.
3. INSTALL GRANITE PAVERS TO MATCH PROFILES OF THOSE REMOVED ON SHEET AD101
4. SECURE BRONZE THRESHOLDS WITH BACK UP ANCHOR SHELVES IN CONCRETE SIDEWALK AND BRONZE TAMPER PROOF SCREWS.
5. NEW 4" THICK CONCRETE SLAB TO MATCH ADJACENT SIDEWALK IN COLOR AND TEXTURE OF AN 8' WIDTH
6. REINSTALL GRANITE SEAT CAP WITH FLASHING DETAIL SHOWN ON SHEET A503. NEW JOINT SEALANT
7. EXISTING BRONZE SUNBURST GRILL SHALL HAVE EXISTING BOLTS REMOVED, THE GRILL REFINISHED & RESEALED AND 1/2" X 8" TAMPER PROOF BOLTS TO BE INSTALLED. EXISTING GLASS LENS TO BE BUFFED.
8. REINSTALL GRANITE PAVERS ON BRIDGES
9. NEW 2" TRENCH DRAIN. SEE DETAIL 8/W102

PAVER SCHEDULE		
UNIT	SIZE	NOTES
1	1 1/4 x 19 x 27	RADIAL AND BEVELED EDGES
2	1 1/4 x 6 x 27	RADIAL AND BEVELED EDGES
3	1 1/4 x 32 x 32	RADIAL AND BEVELED EDGES
4	1 1/4 x 6 x 27	RADIAL AND BEVELED EDGES
5	1 1/4 x 25 x 45	RADIAL AND BEVELED EDGES
6	1 1/4 x 25 x 45	RADIAL AND BEVELED EDGES
7	1 1/4 x 25 x 27	RADIAL AND BEVELED EDGES
8	1 1/4 x 80 x 20	TRAPEZOID WITH CURVED EDGE
9	1 1/4 x 80 x 20	TRAPEZOID WITH CURVED EDGE
10	1 1/4 x 6 x 25	RADIAL AND BEVELED EDGES



1 NEW WORK
 1/8" = 1'-0"

PROJECT:
VETERANS MEMORIAL
 WV CAPITOL CAMPUS
 STATE OF WV GENERAL SERVICES DIVISION
PLAN VIEW

Drawing Set Number

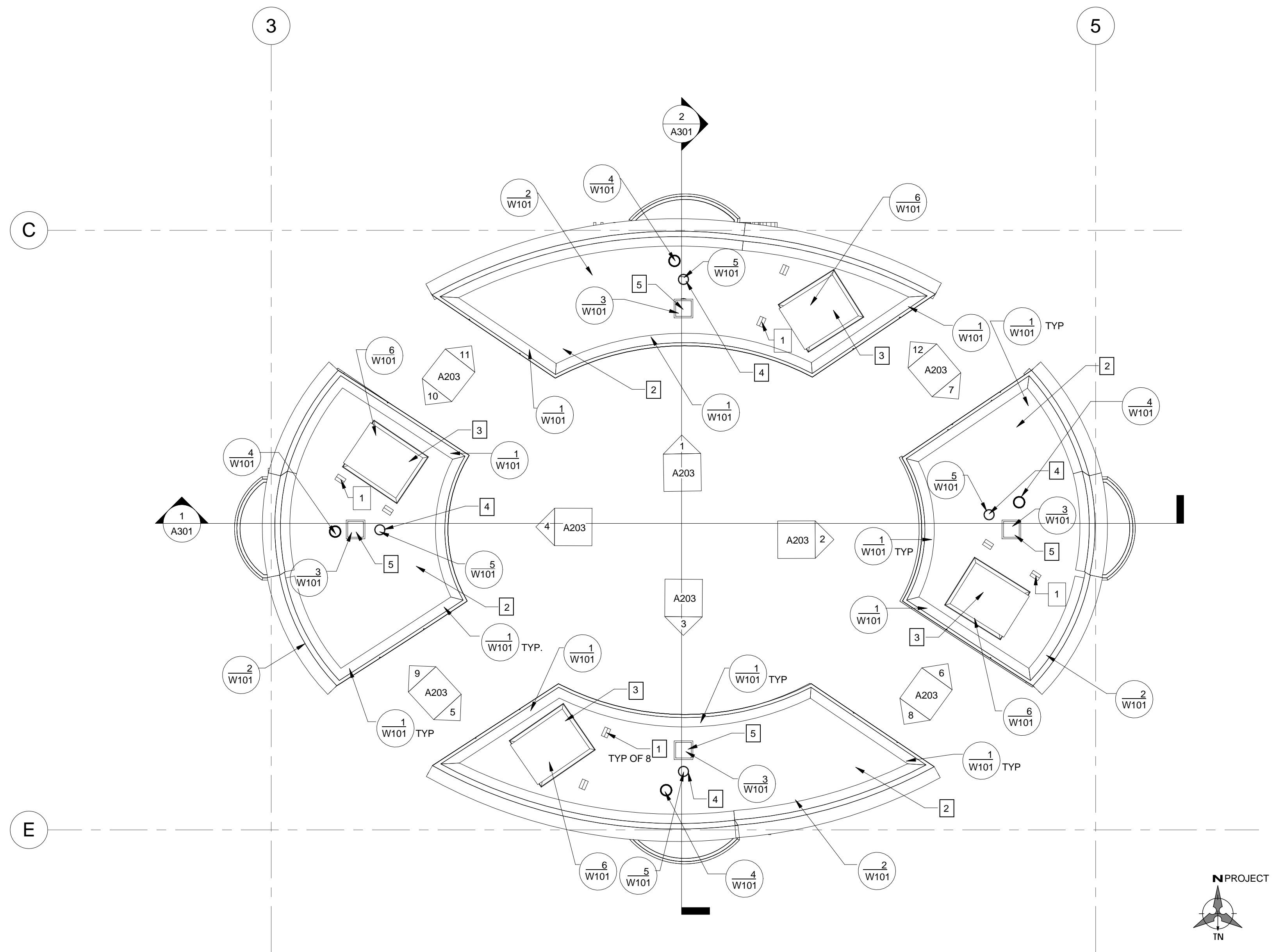
Revision Schedule		
No.	Revision	Date
1	REVISION #1	01-24-14

INTENDED DRAWING USE:	
BIDDING	Conceptual
	Review
	Permitting
	Bidding
	Construction Documents

Project number	13069
Date	09-20-2013
Drawn by	CVM
Checked by	MM

A101

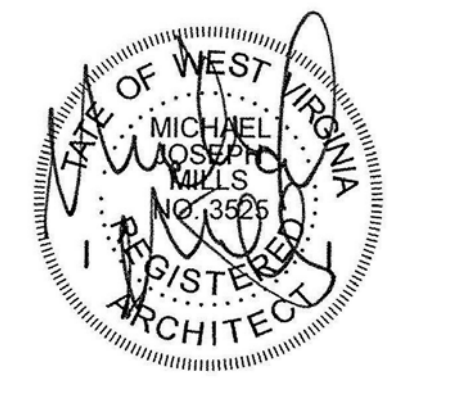
Scale As indicated



1 ROOF PLAN
1/4" = 1'-0"

- GENERAL NOTES:
1. ALL NEW ROOF SYSTEM TO BE INSTALLED. SEE SHEET W101.
 2. SEE SHEET W101 FOR PARAPET RESTORATION DETAILS.
 3. INSTALLED WALKOFF MAT AT 8" WIDE AROUND PERIMETER OF ROOF FOR ACCESS HATCHES (TYP OF 4)
 4. SEE DETAIL 4/W101 FOR ROOF DRAINS
 5. SEE DETAIL 7/W101 FOR FALL PROTECTION DETAILS

- KEYED NOTES (NEW WORK):
1. INSTALL NEW FALL PROTECTION ANCHORS. COORDINATE WITH STRUCTURAL WORK.
 2. NEW 90 MILL EPDM ROOFING SYSTEM.
 3. PRIME AND PAINT EXISTING ROOF HATCH ASSEMBLY.
 4. INSTALL NEW 3" DIA. OVERFLOW DRAIN. SEE DETAIL ON SHEET W101.
 5. EXISTING VENT CAP TO BE REINSTALLED



PROJECT:
VETERANS MEMORIAL
WV CAPITOL CAMPUS
STATE OF WV GENERAL SERVICES DIVISION
ROOF PLAN

Drawing Set Number

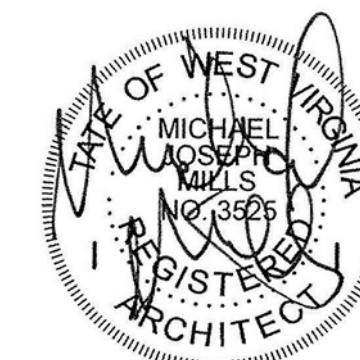
Revision Schedule		
No.	Revision	Date
1	REVISION #1	01-24-14

INTENDED DRAWING USE:	
BIDDING	Conceptual
	Review
	Permitting
	Bidding
	Construction Documents

Project number	13069
Date	09-20-2013
Drawn by	CVM
Checked by	MM

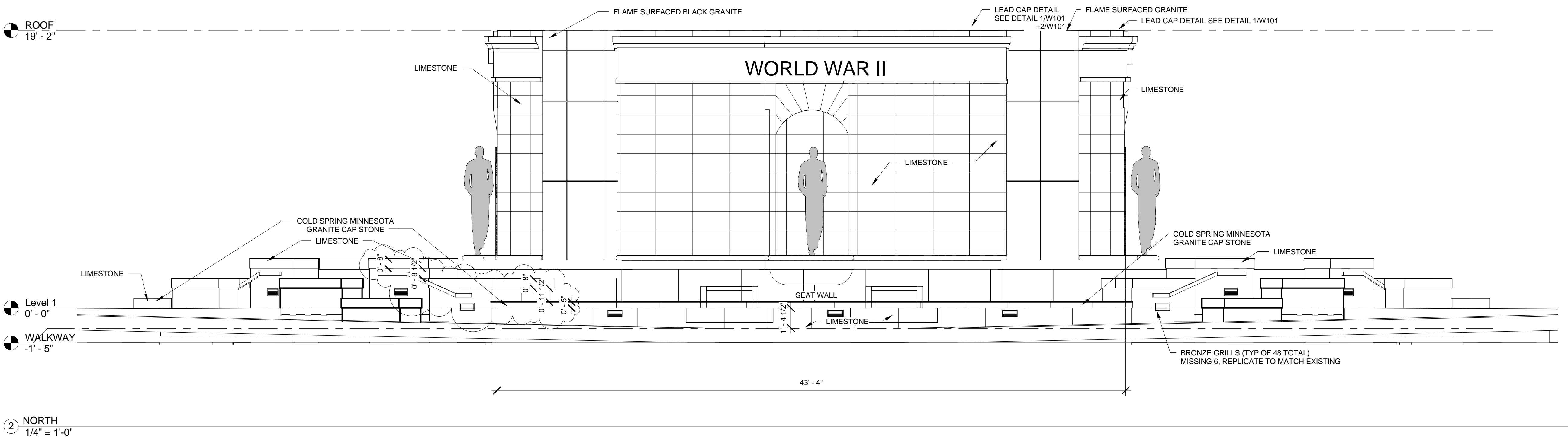
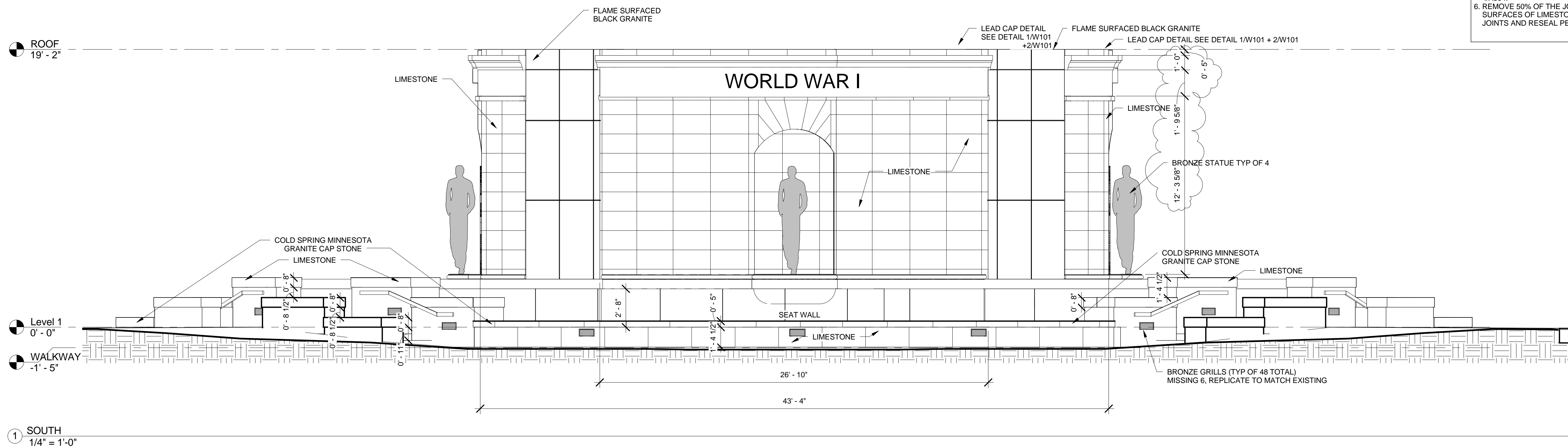
A102

Scale 1/4" = 1'-0"



GENERAL NOTES

1. ALL STONE SURFACES (LIMESTONE AND GRANITE) TO BE CLEANED WITH THE SPECIFIED TREATMENT PROCEDURES.
2. ALL EXPOSED CONCRETE TO BE CLEANED WITH THE SPECIFIED PROCEDURES.
3. ALL BRONZE STATUES, GRILLS, GLASS, AND ALUMINUM COMPONENTS SHALL BE PROTECTED DURING CLEANING.
4. EXISTING BRONZE GRILLS AT SIDE WALLS TO BE REMOVED, CLEANED, WAXED, AND REINSTALLED WITH TAMPER PROOF BRONZE SCREWS. COORDINATE WITH ELECTRICAL DRAWINGS AND NEW LIGHT FIXTURES. (TYP OF 48). REPLACE MISSING.
5. REMOVE 100% OF THE JOINT SEALANT ON THE OUTER SURFACES OF THE LIMESTONE SEAT WALL. 100% OF JOINT SEALANT ON INTERIOR (TOWARD POOL) OF SEAT WALL, + 100% OF INTERIOR AND EXTERIOR SURFACE OF THE LIMESTONE CHEEK WALLS AT STEPS. CLEAN ALL JOINTS AND RESEAL PER DETAIL 4/A504.
6. REMOVE 50% OF THE JOINT SEALANT AT OUTER SURFACES OF LIMESTONE PYLONS. CLEAN ALL JOINTS AND RESEAL PER DETAIL 4/A504.



PROJECT:
VETERANS MEMORIAL

WV CAPITOL CAMPUS
STATE OF WV GENERAL SERVICES DIVISION

ELEVATIONS

Drawing Set Number

Revision Schedule		
No.	Revision	Date
1	REVISION #1	01-24-14

INTENDED DRAWING USE:	
BIDDING	Conceptual
	Review
	Permitting
	Bidding
	Construction Documents

Project number	13069
Date	09-20-2013
Drawn by	CVM
Checked by	MM

A201

Scale As indicated



PROJECT:
VETERANS MEMORIAL
 WV CAPITOL CAMPUS
 STATE OF WV GENERAL SERVICES DIVISION
HAND RAIL DETAILS/ENLARGED BRIGE PLAN

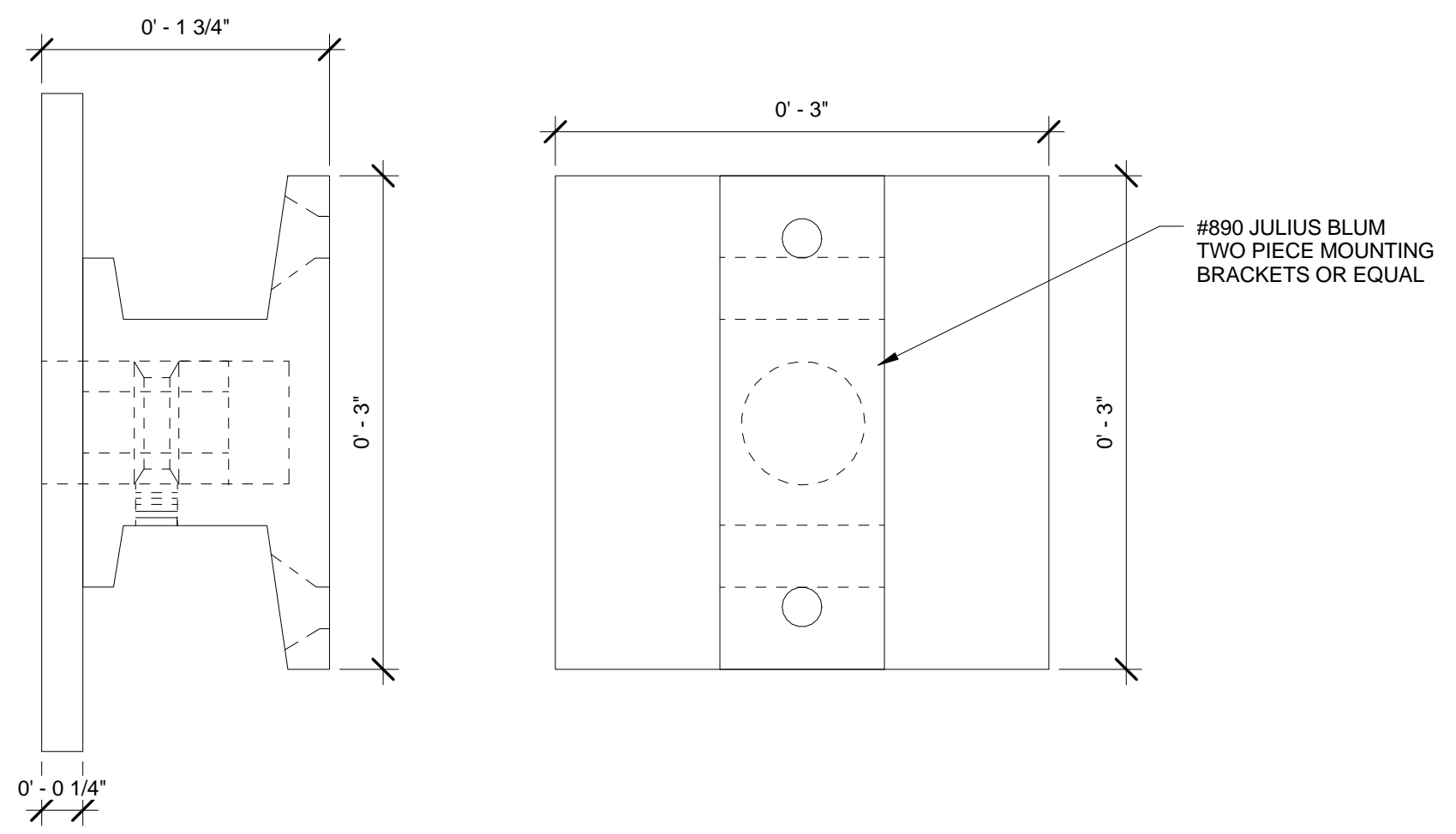
Drawing Set Number

Revision Schedule		
No.	Revision	Date
1	REVISION #1	01-24-14

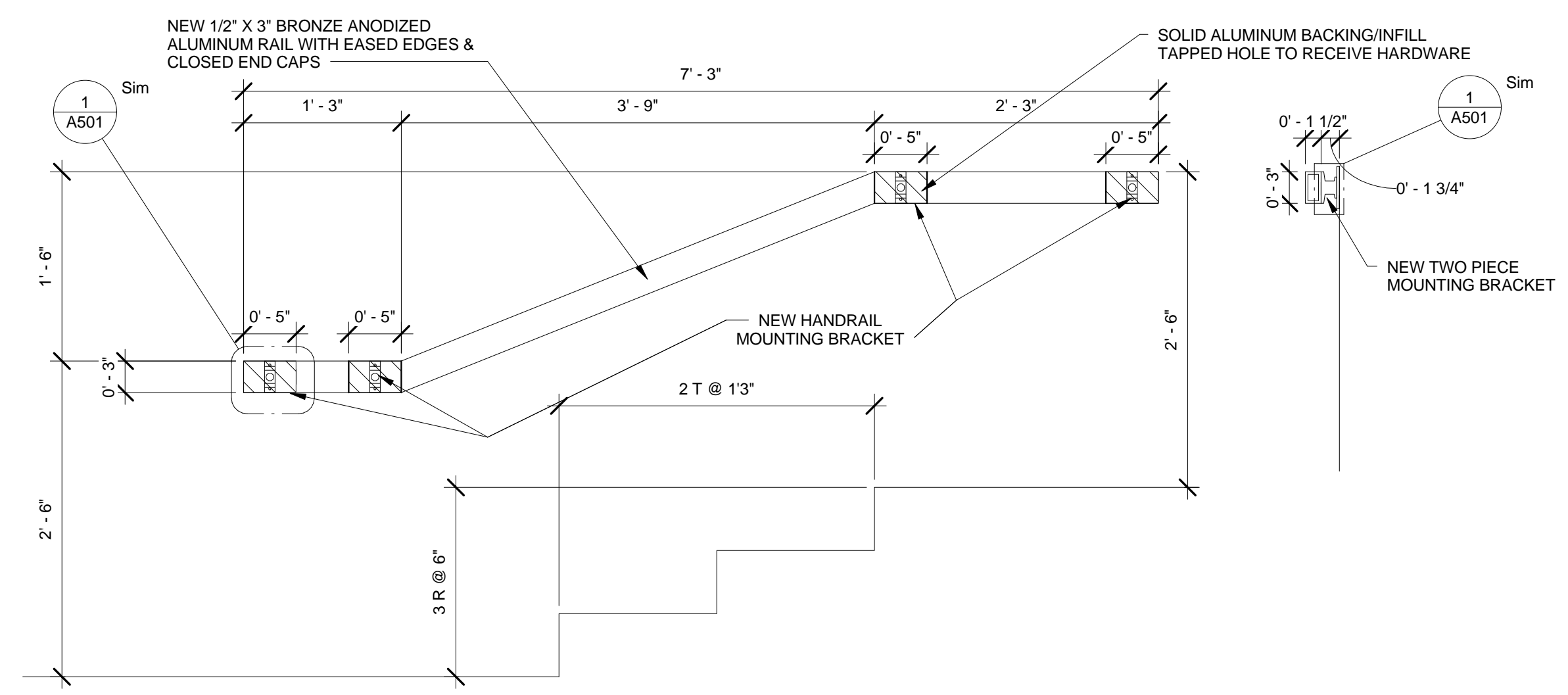
INTENDED DRAWING USE:	
<input type="checkbox"/>	Conceptual
<input type="checkbox"/>	Review
<input type="checkbox"/>	Permitting
<input checked="" type="checkbox"/>	BIDDING
<input type="checkbox"/>	Construction Documents

Project number	13069
Date	09-20-2013
Drawn by	CVM
Checked by	MM

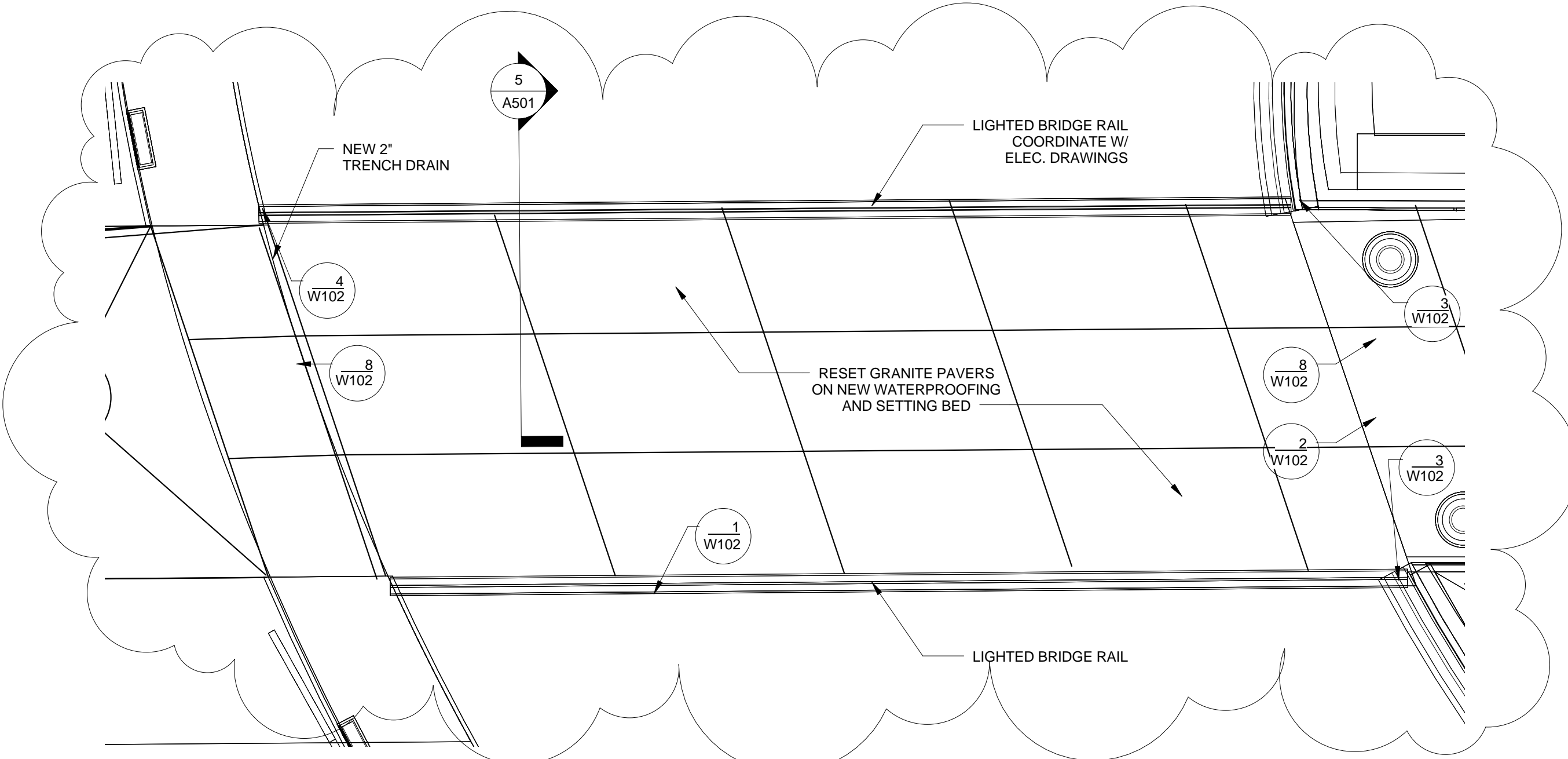
A501
 Scale As indicated



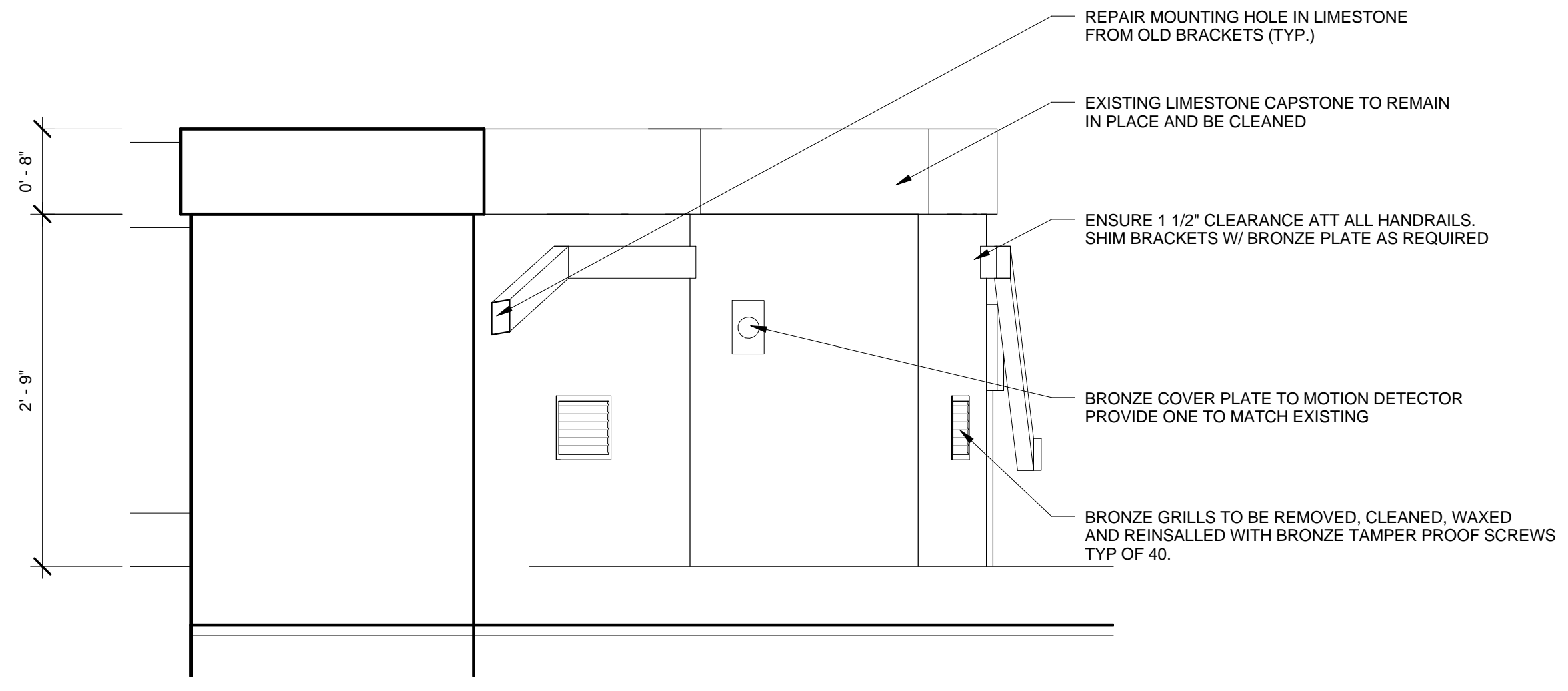
1 TWO PIECE MOUNTING BRACKET
 12" = 1'-0"



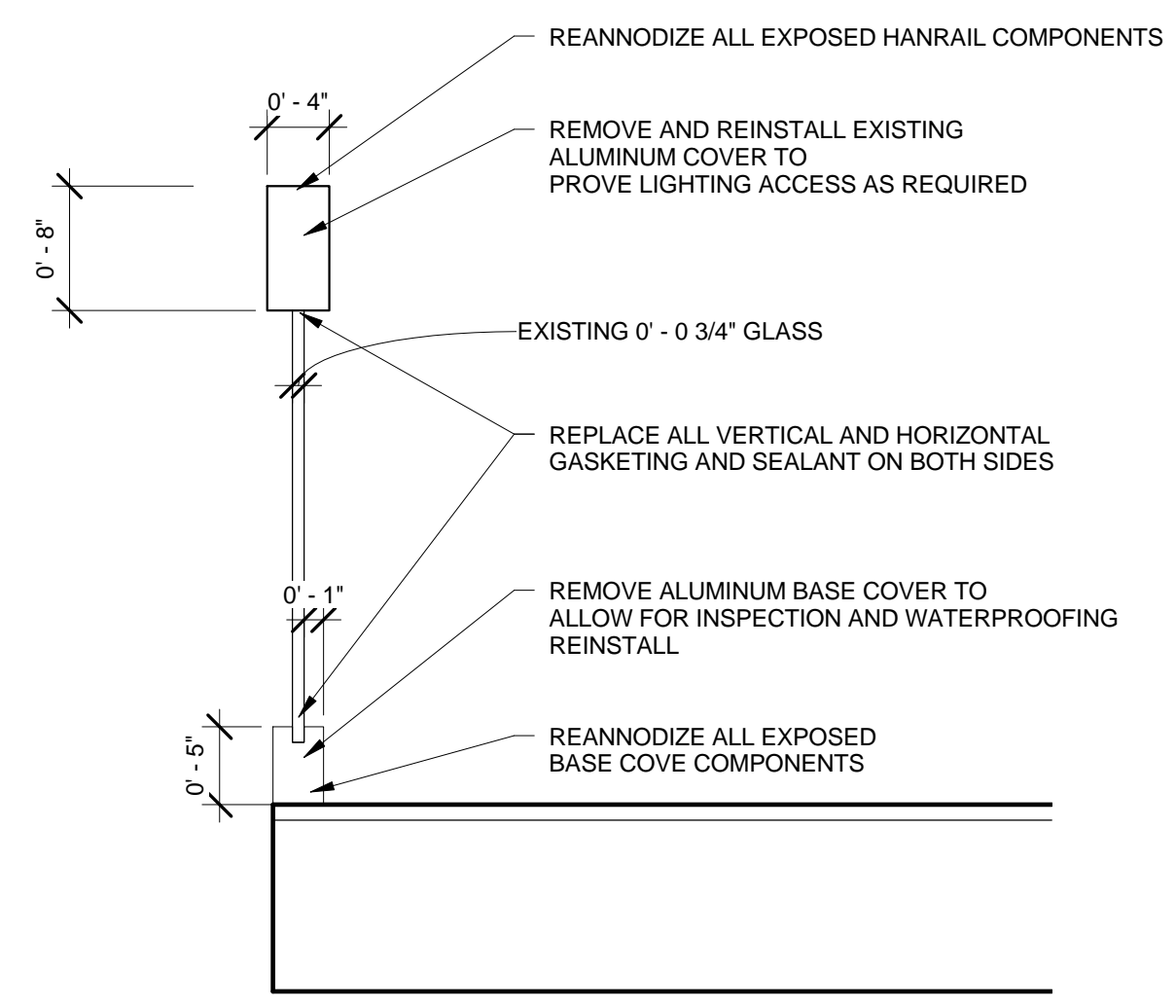
2 ABUTMENT RAIL ELEVATION
 1" = 1'-0"



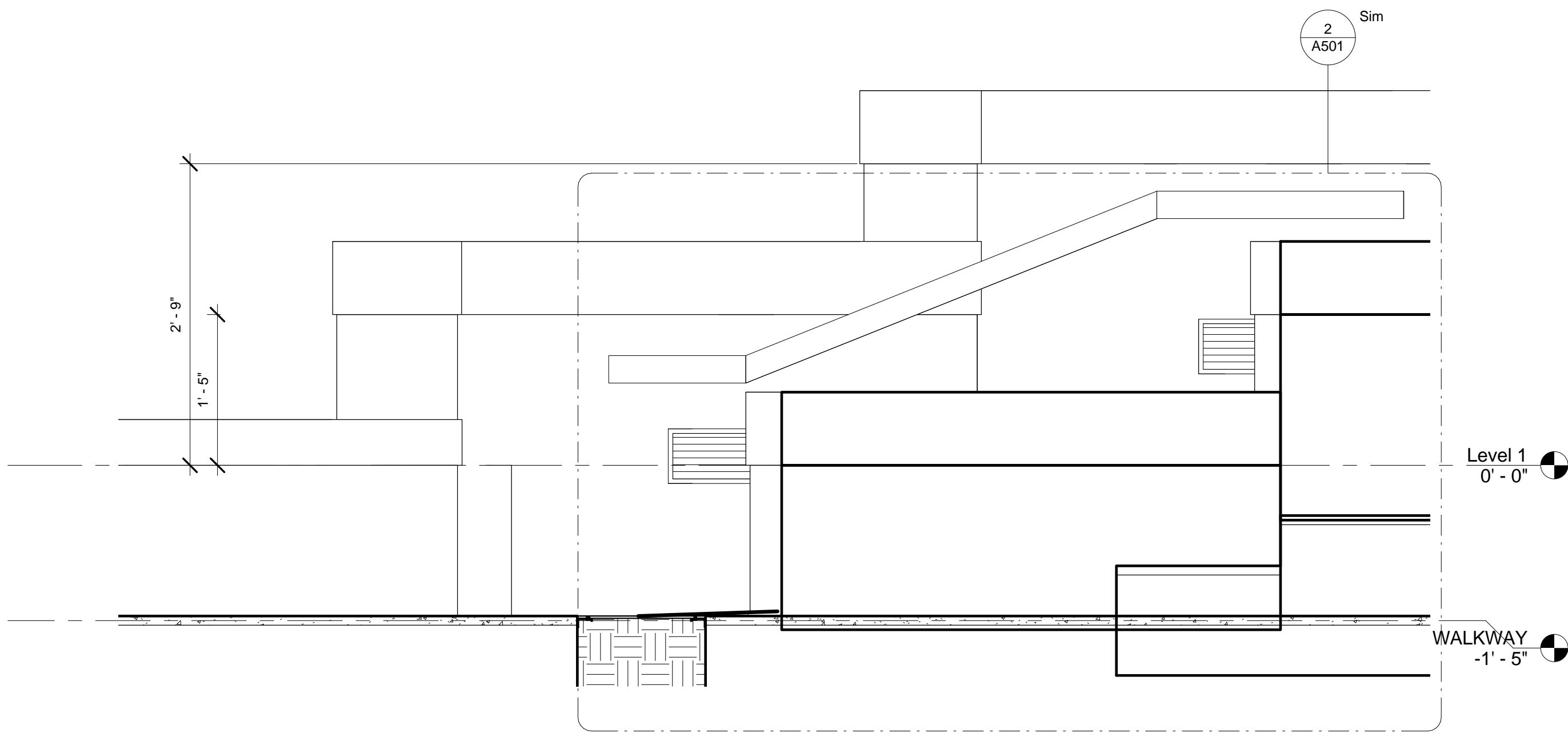
3 ENLARGED BRIDGE PLAN - TYP OF 4
 1/2" = 1'-0"



4 ABUTMENT RAILING
 1" = 1'-0"

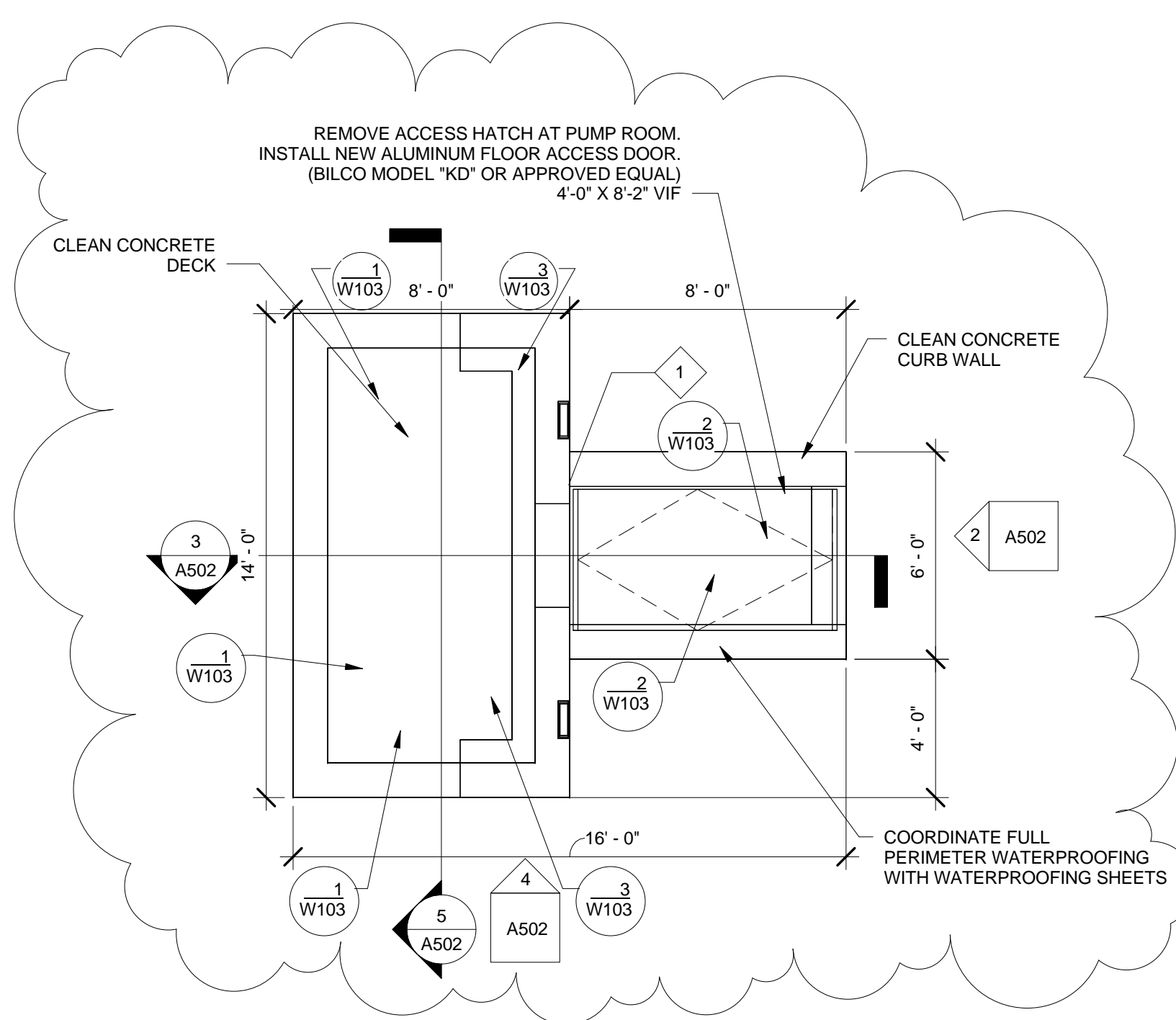


5 BRIDGE RAILING
 1" = 1'-0"

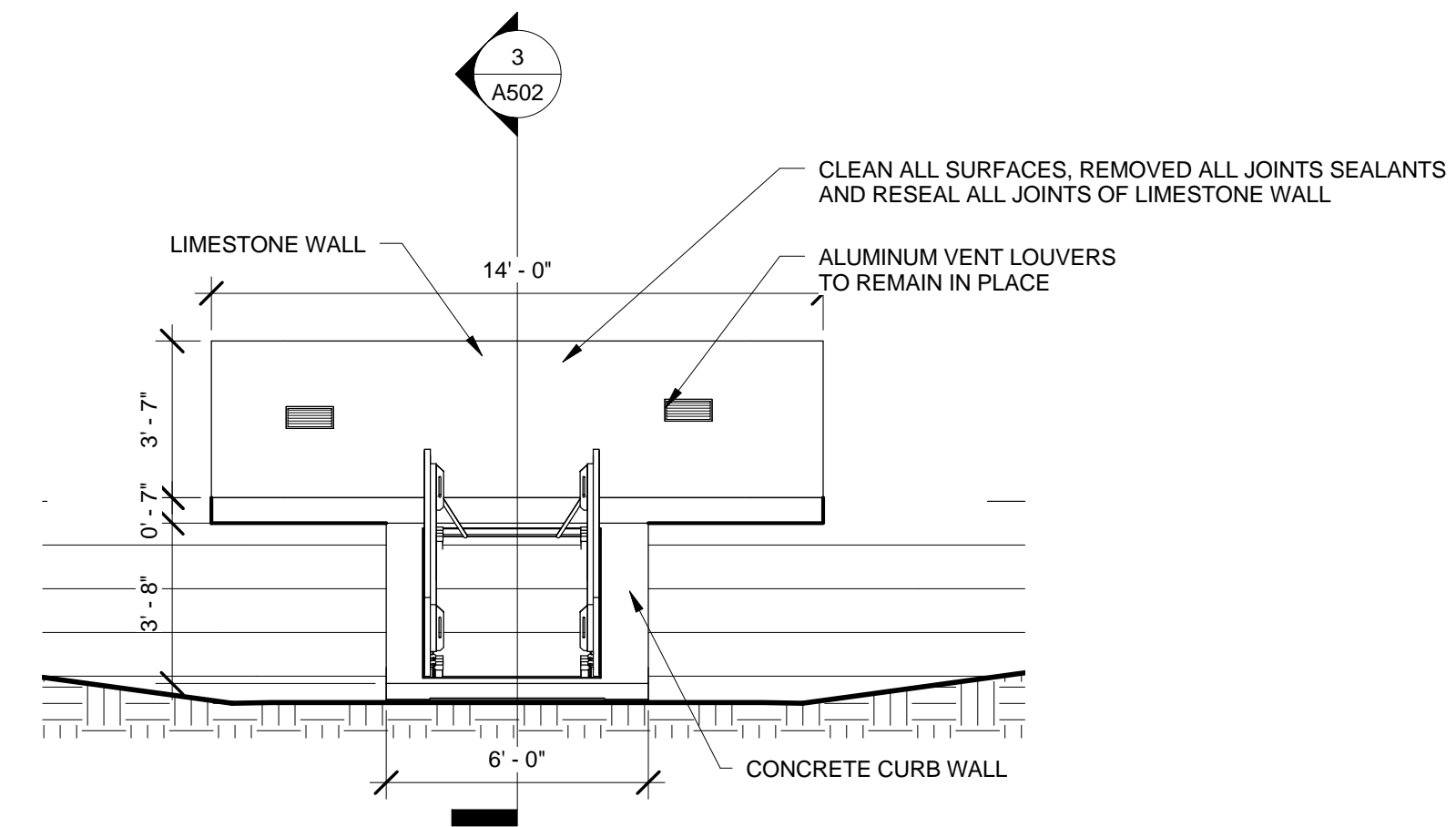


6 Elevation 2 - a
 1" = 1'-0"

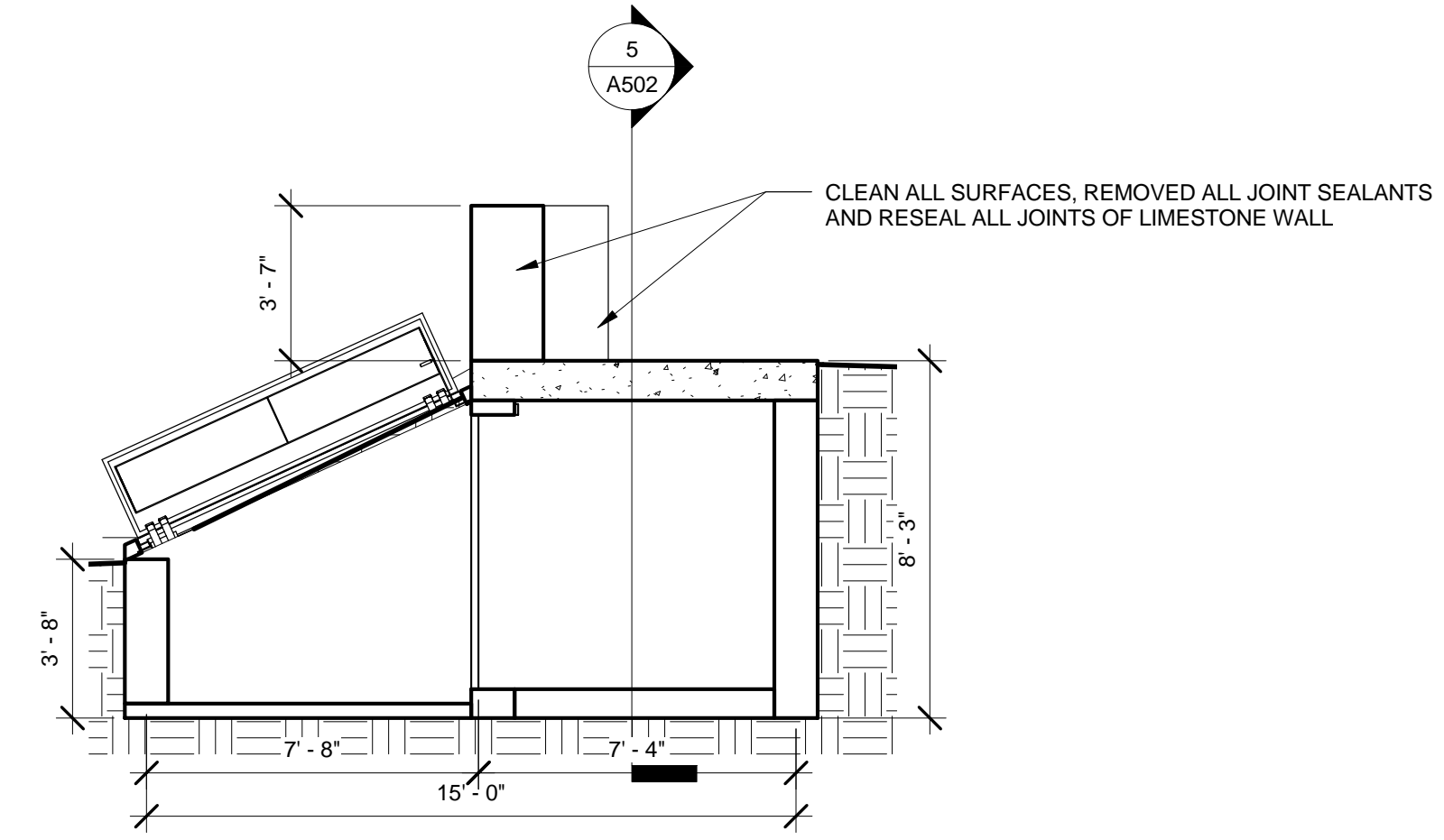
KEYED NOTES
 1 CUT OUT AND REPLACE SEALANT AND BACKER ROD



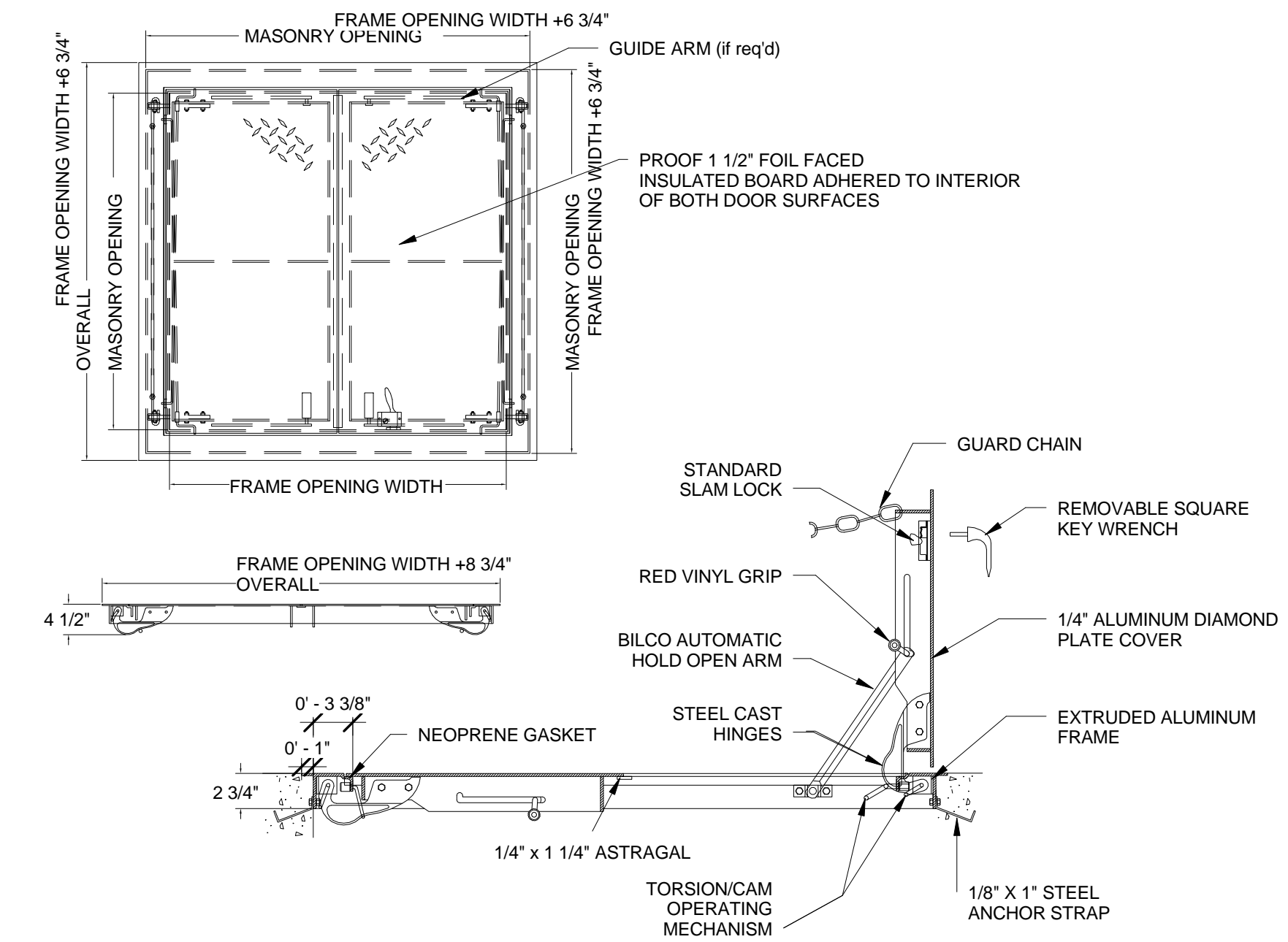
1 PUMP HOUSE FLOOR PLAN
 1/4" = 1'-0"



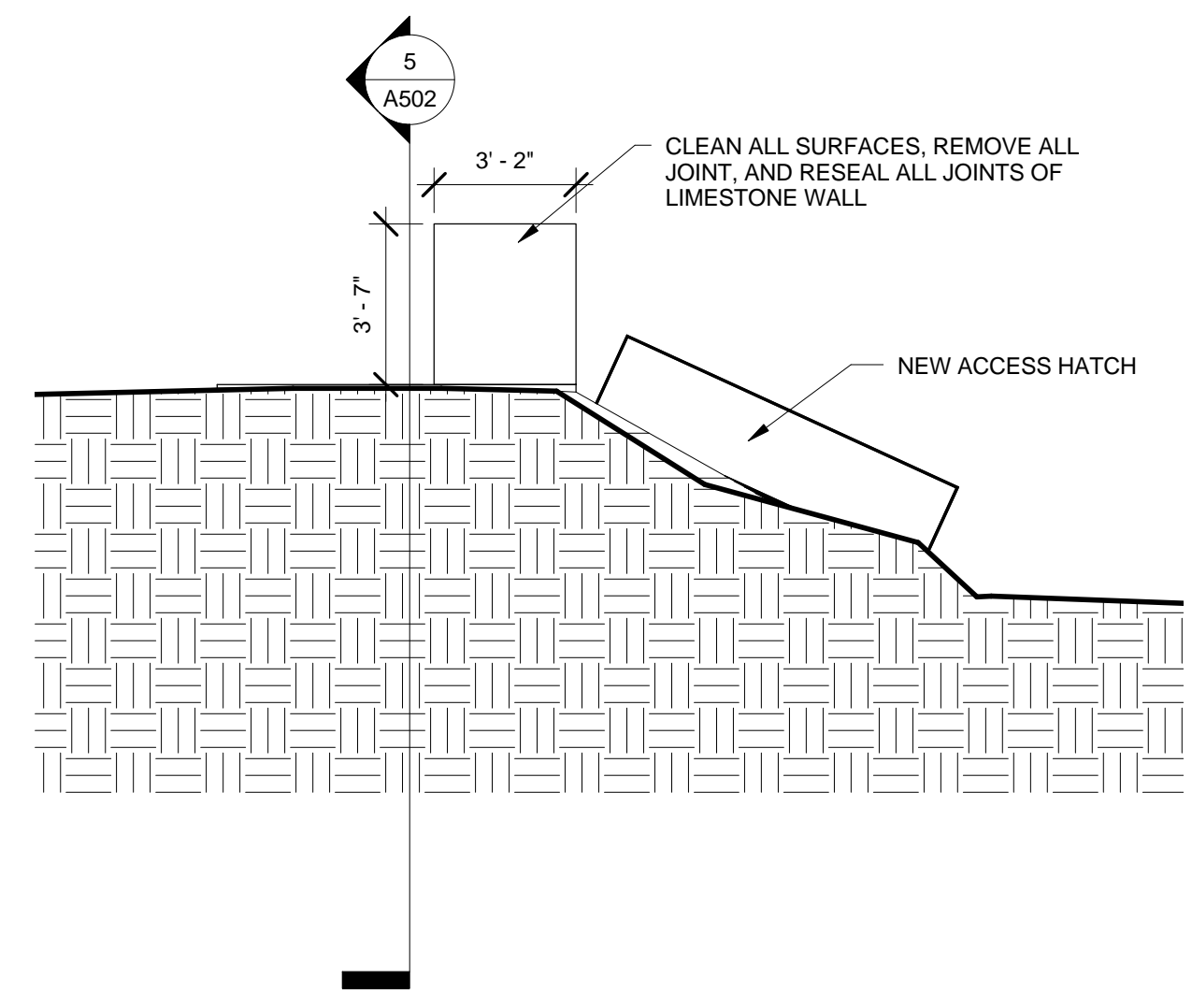
2 ELEVATION 2 - PUMP HOUSE
 1/4" = 1'-0"



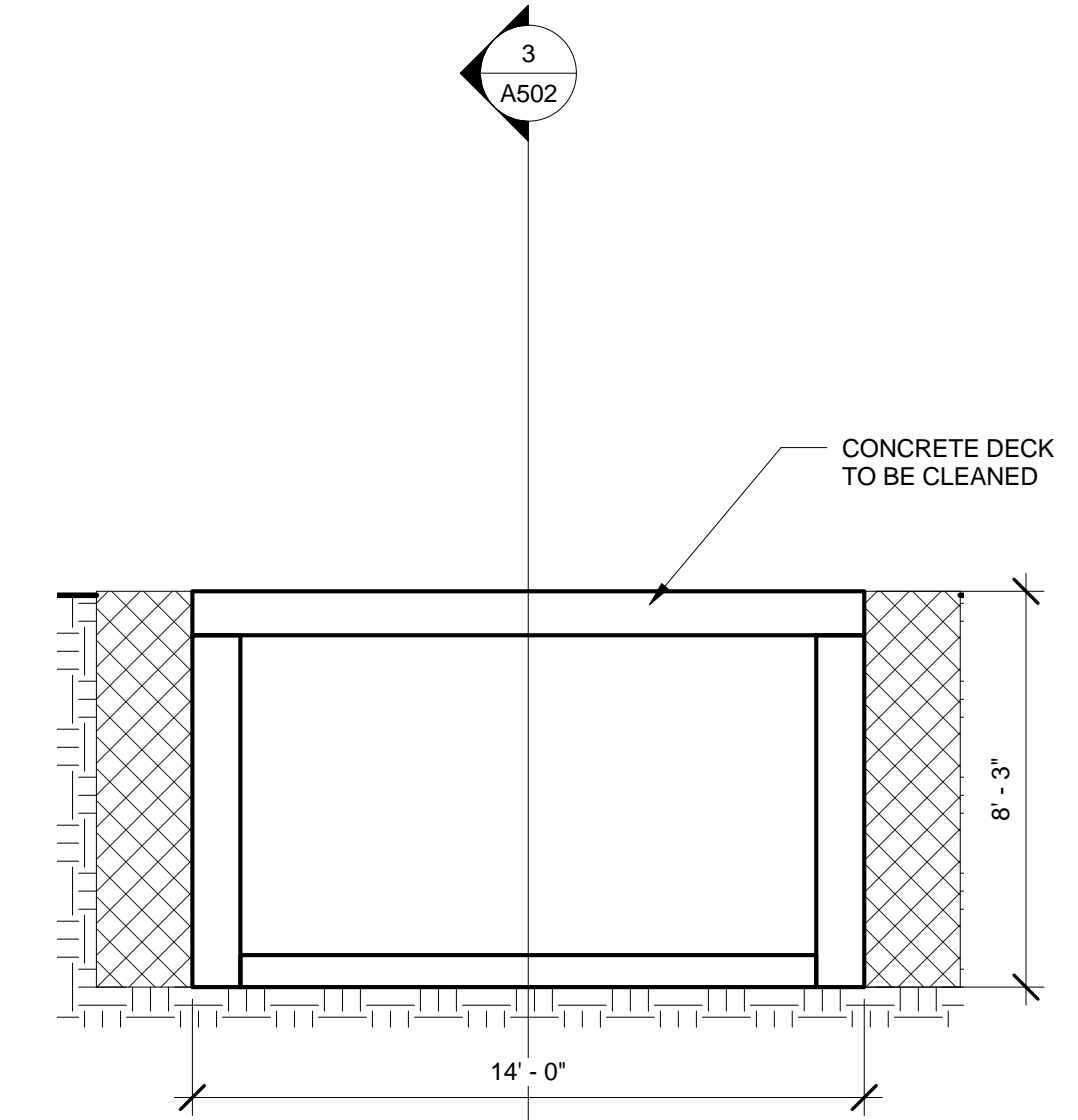
3 PUMP HOUSE - SECTION 2
 1/4" = 1'-0"



6 ACCESS DOOR DETAILS
 1" = 1'-0"



4 ELEVATION 1 - PUMP HOUSE
 1/4" = 1'-0"



5 PUMP HOUSE - SECTION 1
 1/4" = 1'-0"

PROJECT:
VETERANS MEMORIAL
 WV CAPITOL CAMPUS
 STATE OF WV GENERAL SERVICES DIVISION
 PUMP HOUSE DETAILS

Drawing Set Number

Revision Schedule		
No.	Revision	Date
1	REVISION #1	01-24-14

INTENDED DRAWING USE:	
BIDDING	Conceptual
	Review
	Permitting
	Bidding
	Construction Documents

Project number	13069
Date	09-20-2013
Drawn by	CVM
Checked by	MM

A502

Scale As indicated