



State of West Virginia  
 Department of Administration  
 Purchasing Division  
 2019 Washington Street East  
 Post Office Box 50130  
 Charleston, WV 25305-0130

**Solicitation**

NUMBER
GSD146406

PAGE
1

ADDRESS CORRESPONDENCE TO ATTENTION OF:
GUY NISBET 304-558-2596

RFQ COPY

TYPE NAME/ADDRESS HERE

V  
E  
N  
D  
O  
R

S  
H  
I  
P  
T  
O

DEPARTMENT OF ADMINISTRATION  
 GENERAL SERVICES DIVISION  
 JOBSITE  
 SEE SPECIFICATIONS

304-558-2317

DATE PRINTED
01/29/2014

BID OPENING DATE: 02/11/2014

BID OPENING TIME 1:30PM

LINE	QUANTITY	UOP	CAT NO	ITEM NUMBER	UNIT PRICE	AMOUNT
ADDENDUM NO.02						
ADDENDUM FOR THE RENOVATIONS TO THE WEST VIRGINIA VETERANS MEMORIAL LOCATED IN CHARLESTON, WEST VIRGINIA AT THE CAPITOL COMPLEX ISSUED TO DISTRIBUTE THE ATTACHED INFORMATION TO THE VENDOR COMMUNITY.						
0001	1	LS	968-42	RENOVATIONS TO WV VETERANS MEMORIAL		
***** THIS IS THE END OF RFQ GSD146406 ***** TOTAL:						

SIGNATURE		TELEPHONE		DATE
TITLE	FEIN	ADDRESS CHANGES TO BE NOTED ABOVE		

WHEN RESPONDING TO SOLICITATION, INSERT NAME AND ADDRESS IN SPACE ABOVE LABELED 'VENDOR'

SOLICITATION NUMBER: GSD146406  
Addendum Number: No.02

---

The purpose of this addendum is to modify the solicitation identified as (“Solicitation”) to reflect the change(s) identified and described below.

**Applicable Addendum Category:**

- Modify bid opening date and time
- Modify specifications of product or service being sought
- Attachment of vendor questions and responses
- Attachment of pre-bid sign-in sheet
- Correction of error
- Other

**Description of Modification to Solicitation:**

Addendum issued to publish and distribute the following information to the vendor community.

1. Modify Price and Payment section, Section 01200
2. Re-issue drawings C101, A101, A102, A201, A501, A502.
3. Publish Vendor Questions and Agency Response.
4. Revised Pricing Pages
5. Move Bid Opening date from: February 04, 2014 at 1:30 PM. EST.  
to: February 11, 2014 at 1:30 PM. EST.
6. No other changes.

**Additional Documentation:** Documentation related to this Addendum (if any) has been included herewith as Attachment A and is specifically incorporated herein by reference.

**Terms and Conditions:**

1. All provisions of the Solicitation and other addenda not modified herein shall remain in full force and effect.
2. Vendor should acknowledge receipt of all addenda issued for this Solicitation by completing an Addendum Acknowledgment, a copy of which is included herewith. Failure to acknowledge addenda may result in bid disqualification. The addendum acknowledgement should be submitted with the bid to expedite document processing.

# ATTACHMENT A

SECTION 01200 - PRICE AND PAYMENT PROCEDURES

PART 1 - GENERAL

1.1 ALTERNATES

- A. An alternate is an amount proposed by bidder for certain work that may be added to or deducted from the Base Bid amount if Owner accepts the Alternate. The cost or credit for each alternate is the net addition to or deduction from the Contract Sum to incorporate the Alternate into the Work. No other adjustments are made to the Contract Sum.
- B. Indicate on the Bid Form amounts to be deducted from or added to the Contract Sum for the following alternates:
  - 1. **Alternate Bid No. 1** – . Scope of work to upgrade electrical lighting controls as detailed on sheets E101-A1, E103-A1, E201-A1, the supporting specifications, and cut sheets.

1.2 UNIT PRICES

- A. A unit price is an amount proposed by bidders and stated on the Bid Form as a price per unit of measurement for work added to or deducted from the Contract Sum by appropriate modification, if estimated quantities of Work required by the Contract Documents are increased or decreased. Bidders shall indicate on the Bid Form unit prices for the following items of work:
  - 1. Unit Price No. 1 Additional Masonry Repointing - Base Bid includes 1000 Linear feet of 2000 Square feet of the outer surfaces of the limestone pylons. If the actual quantity differs from the quantity included in the Base Bid,
  - 2. Unit Price No. 2 Additional Granite Paver Replacement - Base Bid includes 10 pieces as detailed on sheet A101 for a total of 500 square feet of 1170 Square feet. If the actual quantity differs from the quantity included in the Base Bid,
  - 3. Unit Price No. 3 – Provide limestone veneer replacement as indicated on drawings in lieu of the specified stone repairs. The total square feet of stone repairs as a base bid is 40 square feet.

4. Unit Price No. 4 – Provide new 16 anodized 1/16" anodized bronze base covers in-kind at the bridge handrail in lieu of the specified re-anodization.
  5. Unit Price No. 5 – Provide 8 anodized bronze caps and sidewalls in-kind at the bridge handrail in lieu of the specified re-anodization.
- B. Unit prices include all necessary material, plus cost for delivery, installation, insurance, **applicable taxes**, bonds, overhead, and profit.

### 1.3 CONTRACT MODIFICATION PROCEDURES

- A. On Owner's acceptance of a Proposal Request, Architect will issue an AIA G701 form for signatures of Owner and Contractor. Owner will submit completed G701, will all required documentation provided by the Contractor, to the State Purchasing Division to request approval of a Change Order. Multiple Proposals Requests may be consolidated into a single G701.






### 1.4 PAYMENT PROCEDURES

- A. Submit a Schedule of Values at least 10 days before the first Application for Payment. In Schedule of Values, break down the Contract Sum into at least one line item for each Specification Section. Correlate the Schedule of Values with Contractor's Construction Schedule.
- B. Submit 3 copies of each application for payment on AIA Document G702/703, according to the schedule established in Owner/Contractor Agreement.
1. For any interim Application for Payment through the Application for Payment submitted at Substantial Completion, submit partial releases of liens from each subcontractor or supplier for whom amounts were included in the previous Application for Payment.
  2. Submit final Application for Payment after completion of Project closeout procedures with release of liens and supporting documentation. Include consent of surety to final payment and insurance certificates.

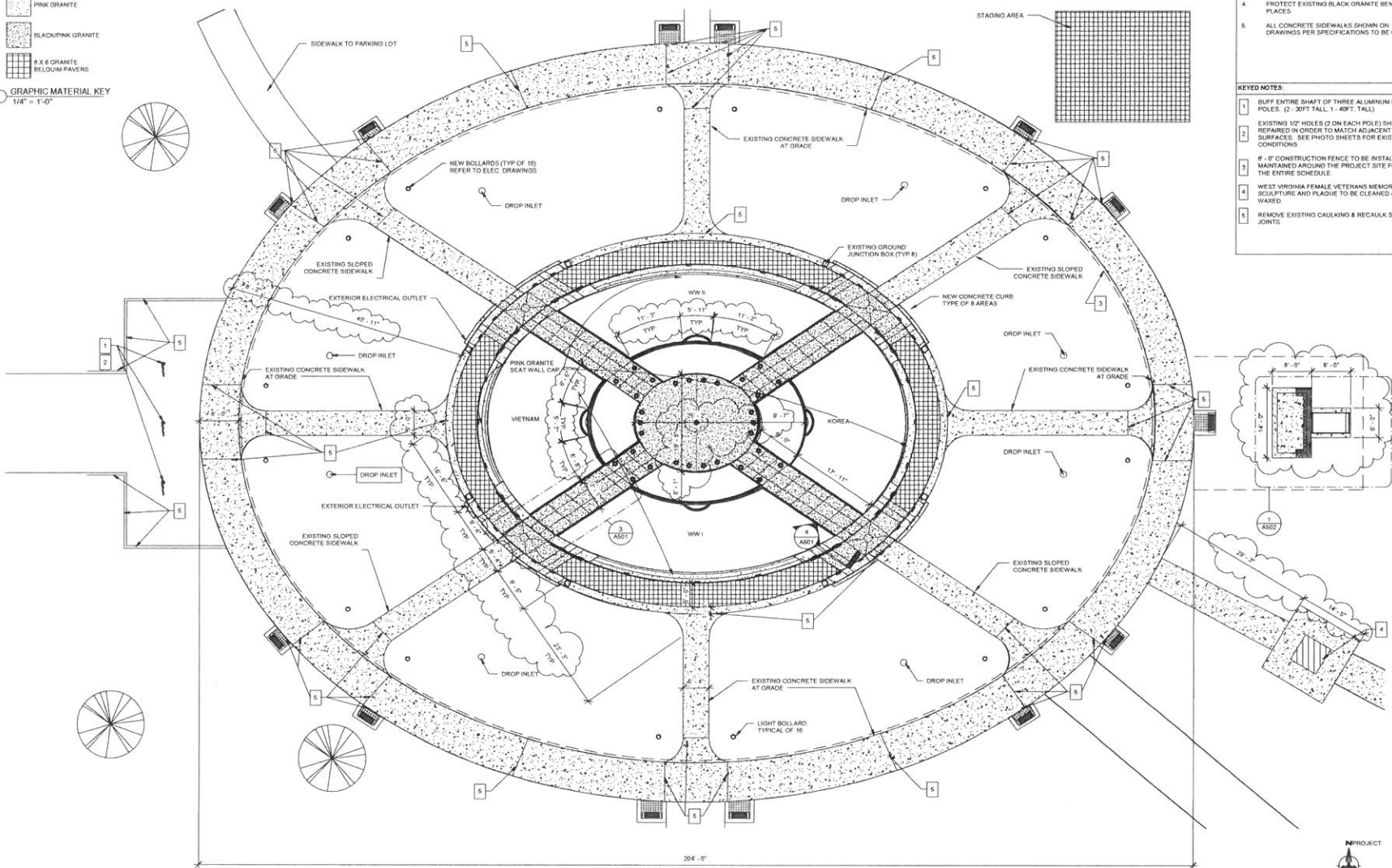
PART 2 - PRODUCTS (Not Applicable)

PART 3 - EXECUTION (Not Applicable)

END OF SECTION 01200

-  CONCRETE
-  LIMESTONE
-  PINK GRANITE
-  BLACK/PINK GRANITE
-  A & G GRANITE
-  BELGIUM PAVERS

GRAPHIC MATERIAL KEY  
1/4" = 1'-0"



GENERAL NOTES:

- 1 EXISTING LAWN DRAINS SHALL BE PROTECTED IN PLACE
- 2 COORDINATE SITE WORK WITH MEP AND WATERPROOFING DRAWINGS
- 3 ENSURE UNOBSTRUCTED ACCESS TO FLAG POLES
- 4 PROTECT EXISTING BLACK GRANITE BENCHES IN PLACES
- 5 ALL CONCRETE SIDEWALKS SHOWN ON DRAWINGS PER SPECIFICATIONS TO BE CLEANED

KEYED NOTES:

- 1 BUFF ENTIRE SHAFT OF THREE ALUMINUM FLAG POLES (2 - 30FT TALL, 1 - 40FT, TALL)
- 2 EXISTING 1/2" HOLES (2 ON EACH POLE) SHALL BE REPAIRED IN ORDER TO MATCH ADJACENT SURFACES. SEE PHOTO SHEETS FOR EXISTING CONDITIONS.
- 3 6" Ø CONSTRUCTION FENCE TO BE INSTALLED AND MAINTAINED AROUND THE PROJECT SITE FOR THE ENTIRE SCHEDULE.
- 4 WEST VIRGINIA FEMALE VETERANS MEMORIAL SCULPTURE AND PLAGUE TO BE CLEANED AND WAXED.
- 5 REMOVE EXISTING CAULKING & RECAULK SIDEWALK JOINTS.



ARCHITECTURE ■ PLANNING ■ INTERIOR DESIGN ■ FACILITIES  
100 WALL STREET, 8TH FLOOR, NEW YORK, NY 10005  
WWW.MILLSGROUP.COM



PROJECT:  
**VETERANS MEMORIAL**

WW CAPITOL CAMPUS

STATE OF WV GENERAL SERVICES DIVISION

SITE PLAN

Drawing Set Number

Revision Schedule		
No.	Revision	Date
1	REVISION #1	01-24-14

INTENDED DRAWING USE:

<b>BIDDING</b>	<input type="checkbox"/> Conceptual
	<input type="checkbox"/> Review
	<input type="checkbox"/> Permitting
	<input type="checkbox"/> Bidding
	<input type="checkbox"/> Construction Documents

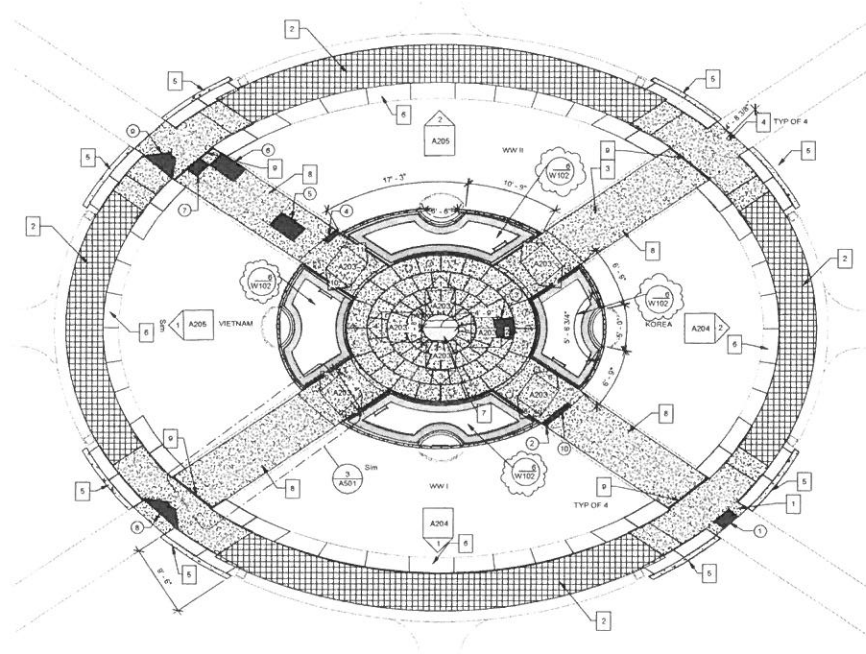
Project number: 13060  
Date: 09-20-2013  
Drawn by: CVM  
Checked by: MM

**C101**

Scale As indicated

1 SITE PLAN  
1" = 10'-0"





1 NEW WORK  
1/8" = 1'-0"



GENERAL NOTES:  
 1 REMOVE ALL CAULKING/SEALANT AT PLAZA JOINT  
 2 THE BASE OF THE PERIMETER 6x6 GRANITE SIDEWALK SHALL BE TRENCHED, BUT CONCRETE CURB TO BE PRESERVED. SEE STRUCTURAL DETAILS  
 3 SEE DETAILS BW102, 4W103, 5W103 FOR BASIN PENETRATIONS

KEYED NOTES: (NEW WORK)  
 1 INSTALL BRONZE THRESHOLD TO MATCH EXISTING AT THREE OTHER LOCATIONS  
 2 REINSTALL 6x6 GRANITE PAVER FIELD INFILL ON MORTAR SETTING BED WITH MORTAR FACE JOINT BETWEEN PAVERS  
 3 INSTALL GRANITE PAVERS TO MATCH PROFILES OF THOSE REMOVED ON SHEET A201  
 4 SECURE BRONZE THRESHOLDS WITH BACK UP ANCHOR SHELVES IN CONCRETE SIDEWALK AND BRONZE TAMPER PROOF SCREWS  
 5 NEW 4" THICK CONCRETE SLAB TO MATCH ADJACENT SIDEWALK IN COLOR AND TEXTURE OF AN 8" WIDTH  
 6 REINSTALL GRANITE SEAT CAP WITH FLASHING DETAIL SHOWN ON SHEET A503. NEW JOINT SEALANT  
 7 EXISTING BRONZE SUNBURST GRILL SHALL HAVE EXISTING BOLTS REMOVED, THE GRILL REFRESHED & RESEALED AND 1/2" X 8" TAMPER PROOF BOLTS TO BE INSTALLED. EXISTING GLASS LENS TO BE BUFFED.  
 8 REINSTALL GRANITE PAVERS ON BRIDGES  
 9 NEW 2" TRENCH DRAIN SEE DETAIL BW102

PAVER SCHEDULE		
UNIT	SIZE	NOTES
1	1 1/4 x 19 x 27	RADIAL AND BEVELED EDGES
2	1 1/4 x 6 x 27	RADIAL AND BEVELED EDGES
3	1 1/4 x 32 x 32	RADIAL AND BEVELED EDGES
4	1 1/4 x 6 x 27	RADIAL AND BEVELED EDGES
5	1 1/4 x 25 x 48	RADIAL AND BEVELED EDGES
6	1 1/4 x 25 x 48	RADIAL AND BEVELED EDGES
7	1 1/4 x 25 x 27	RADIAL AND BEVELED EDGES
8	1 1/4 x 85 x 20	TRAPEZOID WITH CURVED EDGE
9	1 1/4 x 85 x 20	TRAPEZOID WITH CURVED EDGE
10	1 1/4 x 6 x 25	RADIAL AND BEVELED EDGES



PROJECT: **VETERANS MEMORIAL**  
 WW CAPITOL CAMPUS  
 STATE OF WV GENERAL SERVICES DIVISION  
 PLAN VIEW

Drawing Set Number

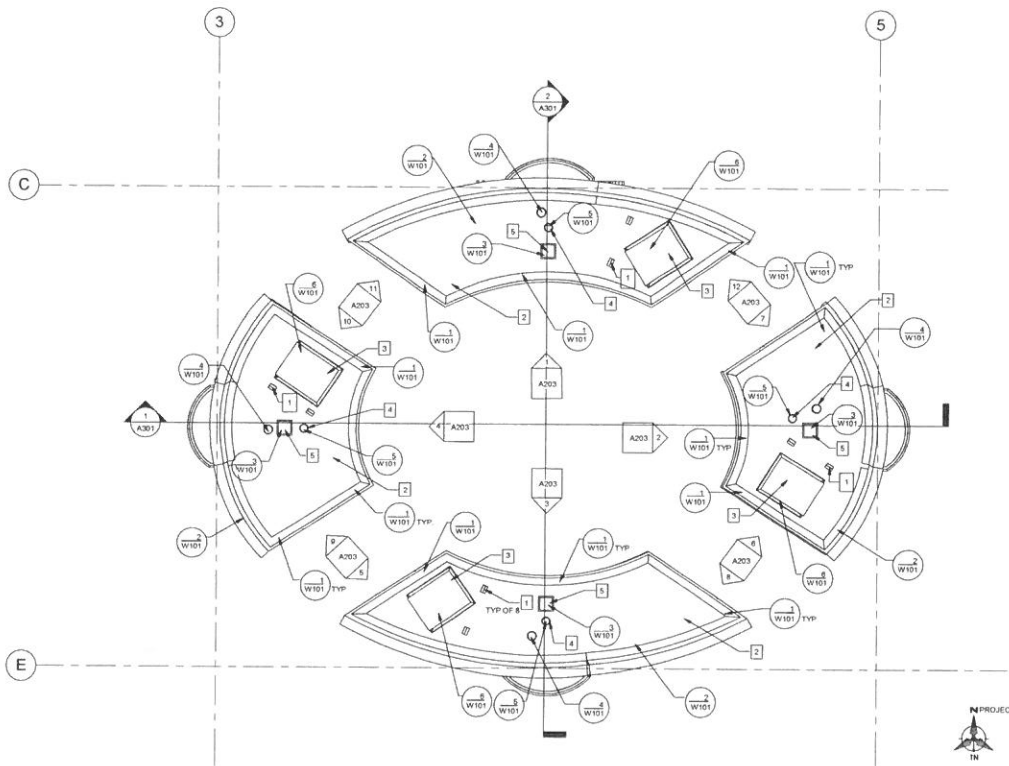
Revision Schedule		
No.	Revision	Date
1	REVISION #1	01-24-14

INTENDED DRAWING USE:  
 BIDDING  
 Conceptual  
 Review  
 Permitting  
 Bidding  
 Construction Documents

Project number 13009  
 Date 09-20-2013  
 Drawn by CVM  
 Checked by MM

**A101**  
 Scale As indicated





1 ROOF PLAN  
1/4" = 1'-0"

- GENERAL NOTES
- 1 ALL NEW ROOF SYSTEM TO BE INSTALLED. SEE SHEET W101
  - 2 SEE SHEET W101 FOR PARAPET RESTORATION DETAILS
  - 3 INSTALLED WALKOFF MAT AT 8" WIDE AROUND PERIMETER OF ROOF FOR ACCESS HATCHES (TYP OF 4)
  - 4 SEE DETAIL 4M101 FOR ROOF DRAIN. SEE DETAIL 7W101 FOR FALL PROTECTION DETAILS

- KEYED NOTES (NEW WORK)
- 1 INSTALL NEW FALL PROTECTION ANCHORS. COORDINATE WITH STRUCTURAL WORK.
  - 2 NEW 90 MILL EPDM ROOFING SYSTEM
  - 3 PRIME AND PAINT EXISTING ROOF HATCH ASSEMBLY
  - 4 INSTALL NEW 3" DIA. OVERFLOW DRAIN. SEE DETAIL ON SHEET W101
  - 5 EXISTING VENT CAP TO BE REINSTALLED



PROJECT:  
**VETERANS MEMORIAL**  
WV CAPITOL CAMPUS  
STATE OF WV GENERAL SERVICES DIVISION  
ROOF PLAN

Drawing Set Number

Revision Schedule		
No.	Revision	Date
1	REVISION #1	01-24-14

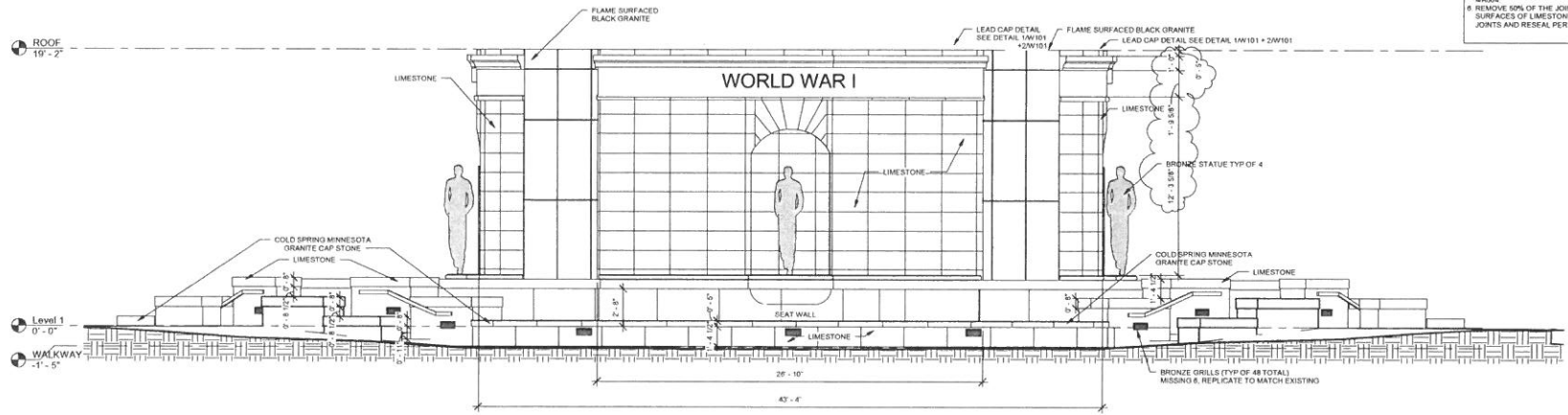
INTENDED DRAWING USE:	
<b>BIDDING</b>	<input type="checkbox"/> Conceptual
	<input type="checkbox"/> Review
	<input type="checkbox"/> Permitting
	<input type="checkbox"/> Bidding
	<input type="checkbox"/> Construction Documents

Project number 13009  
Date 09-20-2013  
Drawn by CVM  
Checked by MM

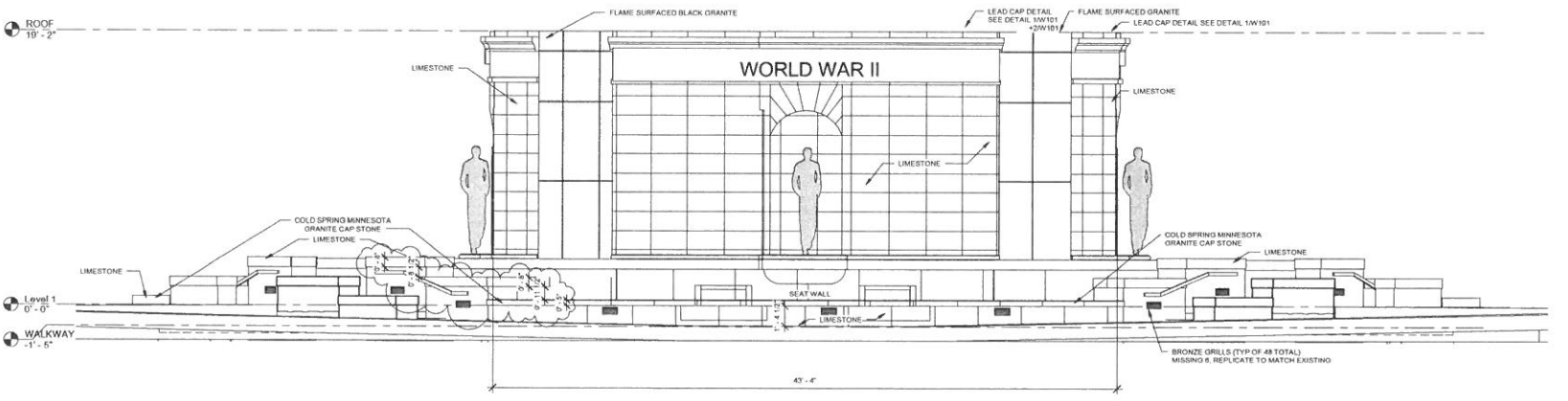
**A102**

Scale 1/4" = 1'-0"

- GENERAL NOTES
1. ALL STONE SURFACES (LIMESTONE AND GRANITE) TO BE CLEANED WITH THE SPECIFIED TREATMENT PROCEDURES.
  2. ALL EXPOSED CONCRETE TO BE CLEANED WITH THE SPECIFIED PROCEDURES.
  3. ALL BRONZE STATUES, GRILLS, GLASS, AND ALUMINUM COMPONENTS SHALL BE PROTECTED DURING CLEANING.
  4. EXISTING BRONZE GRILLS AT SIDE WALLS TO BE REMOVED, CLEANED, WAXED, AND REINSTALLLED WITH TAMPER PROOF BRONZE SCREWS. COORDINATE WITH ELECTRICAL DRAWINGS AND NEW LIGHT FIXTURES (TYP OF 4B). REPLACE MISSING.
  5. REMOVE 100% OF THE JOINT SEALANT ON THE OUTER SURFACES OF THE LIMESTONE SEAT WALL 100% OF JOINT SEALANT ON INTERIOR (TOWARD POOL) OF SEAT WALL + 100% OF INTERIOR AND EXTERIOR SURFACE OF THE LIMESTONE CHEEK WALLS AT STEPS. CLEAN ALL JOINTS AND RESEAL PER DETAIL 4A654.
  6. REMOVE 50% OF THE JOINT SEALANT AT OUTER SURFACES OF LIMESTONE PYLONS. CLEAN ALL JOINTS AND RESEAL PER DETAIL 4A654.



1 SOUTH  
1/4" = 1'-0"



2 NORTH  
1/4" = 1'-0"

PROJECT:  
**VETERANS MEMORIAL**  
WW CAPITOL CAMPUS  
STATE OF WY GENERAL SERVICES DIVISION  
ELEVATIONS

Drawing Set Number

Revision Schedule		
No.	Revision	Date
1	REVISION #1	01-24-14

INTENDED DRAWING USE:

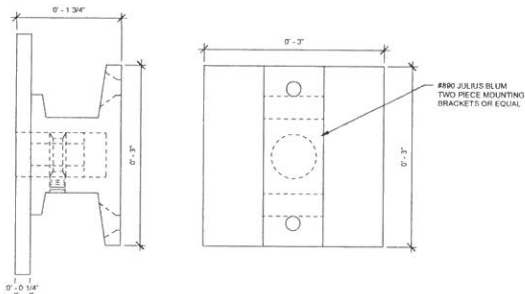
**BIDDING**

Conceptual  
Review  
Permitting  
Bidding  
Construction Documents

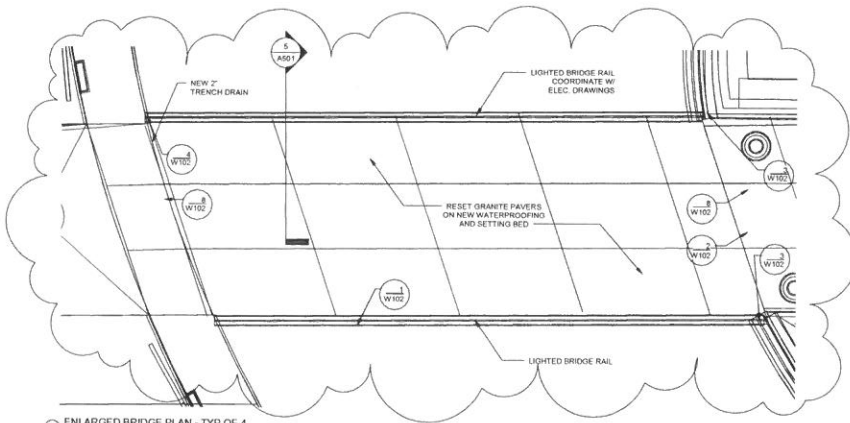
Project number: 13069  
Date: 09-20-2013  
Drawn by: CVM  
Checked by: MM

**A201**

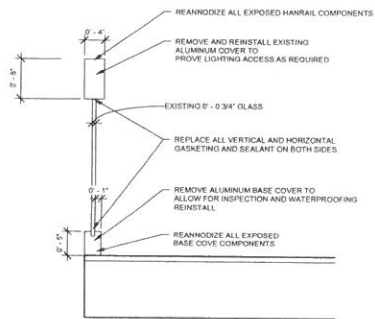
Scale As indicated



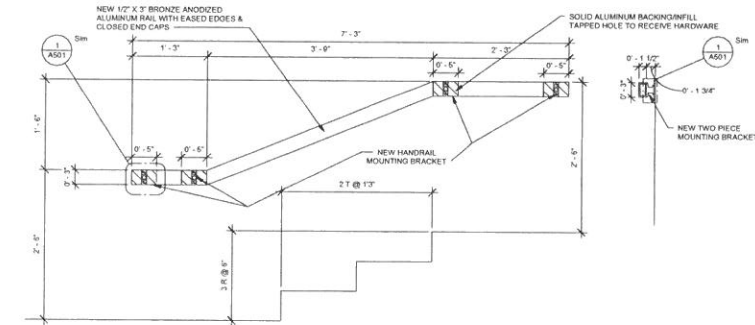
1 TWO PIECE MOUNTING BRACKET  
1/2" = 1'-0"



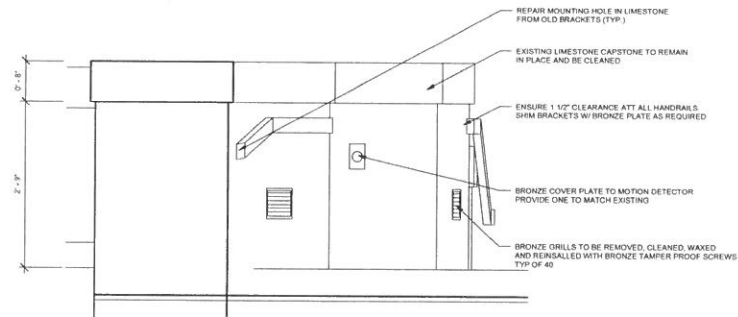
3 ENLARGED BRIDGE PLAN - TYP OF 4  
1/2" = 1'-0"



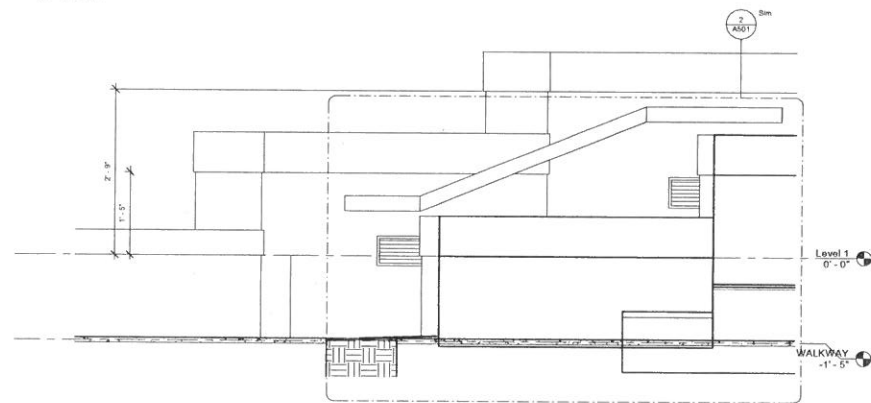
9 BRIDGE RAILING  
1" = 1'-0"



2 ABUTMENT RAIL ELEVATION  
1" = 1'-0"



4 ABUTMENT RAILING  
1" = 1'-0"



6 Elevation 2 - a  
1" = 1'-0"



**PROJECT:**  
**VETERANS MEMORIAL**  
WW CAPITOL CAMPUS  
STATE OF WV GENERAL SERVICES DIVISION  
**HAND RAIL DETAILS/ENLARGED BRIDGE PLAN**

Drawing Set Number

Revision Schedule		
No.	Revision	Date
1	REVISION #1	01-24-14

INTENDED DRAWING USE:

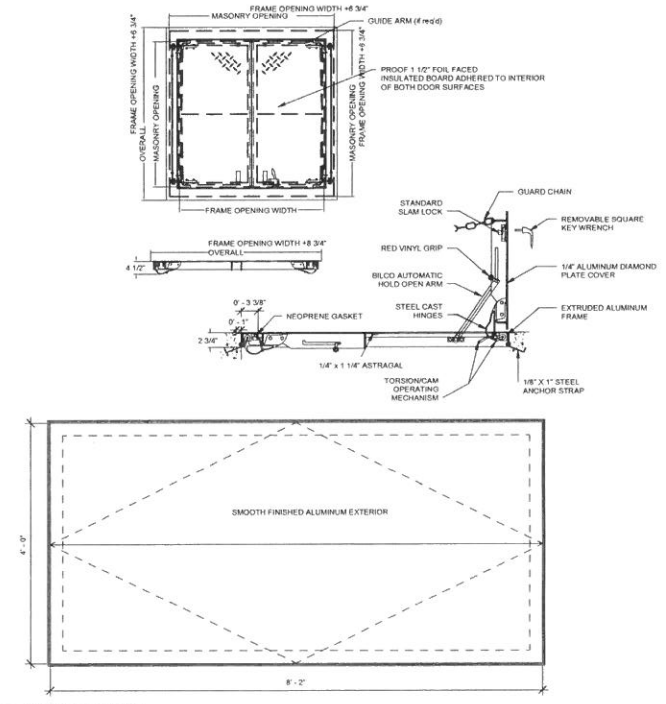
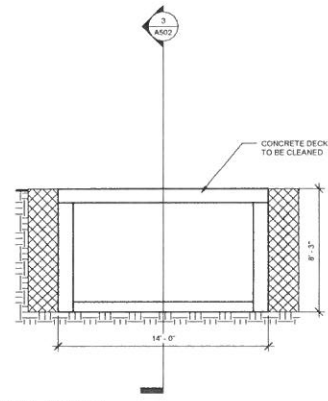
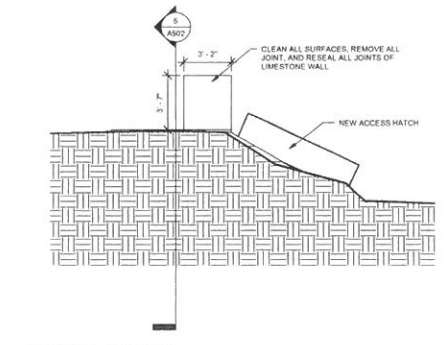
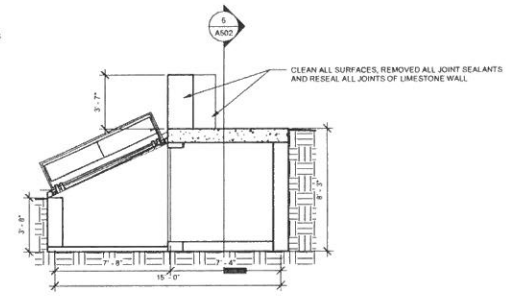
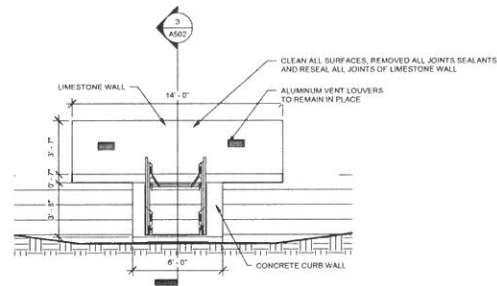
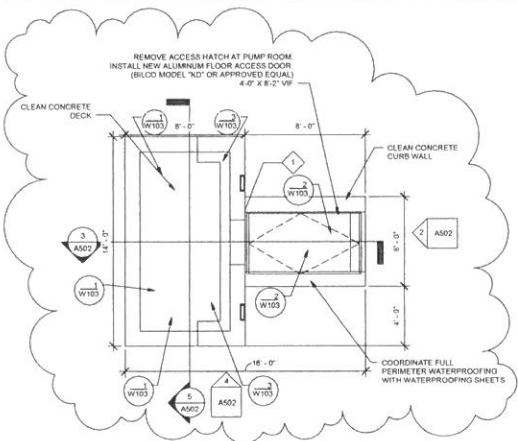
**BIDDING**

- Conceptual
- Review
- Permitting
- Bidding
- Construction Documents

Project number	13069
Date	09-20-2013
Drawn by	CVM
Checked by	MM

**A501**

Scale As indicated



KEYED NOTES  
1 CUT OUT AND REPLACE SEALANT AND BACKER ROD



PROJECT: **VETERANS MEMORIAL**

WW CAPITOL CAMPUS

STATE OF WISCONSIN GENERAL SERVICES DIVISION

PUMP HOUSE DETAILS

Drawing Set Number

Revision Schedule		
No.	Revision	Date
1	REVISION #1	01-24-14

INTENDED DRAWING USE:

**BIDDING**

Conceptual  
Review  
Permitting  
Bidding  
Construction Documents

Project Number	13069
Date	09-20-2013
Drawn by	CVM
Checked by	MM

**A502**

Scale As indicated

**GSD146406**  
**Technical Questions and Answers**

1. I am not seeing the bid bond form for my surety to fill out. Is there a specific form or is a standard bid bond acceptable?

*A.1 Pages 36 and 37 of the RFQ Solicitation, published in the Purchasing Bulletin, is where you will find the Bid Bond preparation Instructions and the Bid Bond Form*

2. Are there liquidated damages? What are they?

*A.2. Page 11 of the RFQ Solicitation, item 12 of the General Terms and Conditions, addresses liquidated damages. The amount of liquidated damages is \$1,000.00 per day for each calendar day beyond 180 days.*

3. During the pre-bid meeting, someone mentioned a page 9 and a page 34 for a complete list of bidder's instruction. I am not seeing those, all I can find is 00100-2 / A. Could you provide clarification on the other instructions and what needs submitted with the bid as well as those forms?

*A.3. Section 00100, "Instruction to Bidders" begins on page 22 of the RFQ published in the Purchasing Bulletin. Page 9 of the RFQ published in the Purchasing Bulletin gives the bid bond information which must be submitted with your bid. Page 34 of the RFQ published in the Purchasing Bulletin is the Construction Bid Submission Form. It is provided for informational purposes only. It is a list of request for quotation bidding requirements commonly missed and/or causing problems in the bidding process. This list does not and cannot include every item, mistake or oversight that could cause a contractor's bid to be disqualified. **All bidders must read the request for quotations, all additional documents, and all instructions relating thereto ("Bid Documents") in their entirety to identify the actual request for quotation and bidding requirements.***

4. Whom should the bid bond be made out to?

*A.4. Pages 36 and 37 of the RFQ Solicitation, published in the Purchasing Bulletin, is where you will find the Bid Bond preparation Instructions and the Bid Bond Form*

5. Have a question about the new pipes connecting to the existing drains from the pool. I can easily connect the areas that are located between the stairs because I can demolish that concrete, I just don't see how I can connect under the stair landings that have the granite pavers without removing pavers and tearing concrete out that I'm not allowed to tear out. Please advise.

*A.5. The piping may be re-connected at the "edge" of the stair landings in those limited locations. This will not be permitted in every connection on the reflecting pond. The design intention is to replace every linear foot of existing piping possible short of those areas designated as not to be disturbed by the architect. Yes, the concrete between the stairs would have to be demoed and replaced to accomplish the*

*connections you describe. The limited amount of re-used piping will still be required to be pressure tested prior to connection of new piping.*

6. I mentioned abandoning unused pipes and conduits in place and I was assured it would be alright. Is this acceptable?

*A.6. Only buried or embedded pipe and conduits will be abandoned in place. Exposed conduit and piping, including that in the pylons and filter room, that is not re-used, will be removed.*

7. Sheet E501, the (2) details on the left side of the page showing custom light fixture. What all is being provided by the contractor other than the fixture?

*A.7. The entire statue lighting assembly detailed and shown on the drawing, including conduits, wiring, drains, and drain pits will be installed as part of this project; which part of the work is performed by which trade is the responsibility of the bidding contractor to coordinate prior to bidding.*

8. Metal restoration 05700-1.5-C state to engage an "Architectural Conservation Lab" in order to test the metallic materials and submit a conservation plan, before restoration can begin. Is there an approved list of pre-qualified agencies that are recommended by the Architect?

*A.8. The architect has no such list of architectural conservation lab or specialist. The architect reserves the right to review and approve the contractor's selected architectural conservation lab or specialist.*

9. Could you please verify if ALL of the statues and plaques are included in our scope. The plans are not really clear as to what the scope is.

*A.9. All five statues are to be cleaned and waxed as well as the plaque on the Vietnam Pylon, the one on the World War 1 Pylon and the oval plaque mounted flush to the granite pavers. The plaques on the Women Veteran memorial are relatively new and should just get a waxing.*

10. Refer to sheet CN, General Notes; Note 5 indicated not to scale drawings. Please provide dimension plan.

*A.10. Please see sheets C101 and A201 with Revision #1 noted and dated 1/24/14 with added dimensional information.*

11. Refer to C101, Staging Area; will a sufficient space be provided for a field office trailer, storage trailer and parking?

*A.11. An office trailer is not allowed on site. The Contractor will have room for one or two small (less than semi-size) storage trailers, limited employee parking will be away from the veteran memorial site on campus as directed by the General Service Administration.*

12. Refer to sheet A501, Detail 1, 2 & 4; please clarify how many new handrails are to be provided and if the new handrails are to tube type plate type. Note, the dimension given in detail 2 is ½" X 3", but it shown as a tube.

*A.12. There are a total of eight handrails of the same configuration and size. The correct size of the new handrails shown in detail 2 should read as 1-1/2"x3"tube.*

13. Refer to sheet A501, Detail 5, "Re-anodize exposed base cove components"; according to one anodizing company, existing pieces that have weathered for years will not accept anodizing like new material and therefore will not match the existing pieces (top rail) and may not match from piece to piece. Is this acceptable?

*A.13. The contractor should include the re-anodizing of the base cove and handrail components as illustrated on sheet A501 and in Detail 5. A unit price has been added to the bid form to allow for the replacement of the bronze anodized components in kind if the mock ups for the restoration efforts are deemed unacceptable by the owner and architect.*

14. Refer to sheet A503, Detail 3; please clarify the purpose of this detail.

*A.14. The contractor is to provide one confined space hoist as shown on sheet A503 and in Detail 3. The project manual contains a specification for the product.*

15. Refer to sheet W102, Detail 4; at what locations / how many scuppers are applicable for this detail?

*A.15 See 1/ A501 for tagged bridge plan. There will be a 2" trench drains per bridge and each trench drain will have two scuppers.*

16. Refer to sheet W102, Detail 8 and specification 07 62 00, 2.4 Bridge Trench Drain; note specifications indicate stainless steel bar grating and detail indicate bronze, please clarify.

*A.16. Please comply with the specification and use the stainless steel bar grating.*

17. Refer to sheet W103, Detail 6; please provide additional information as to the pattern for the resin topcoat in the fountain basin. Note, the existing basin has a black coating and the pattern is not visible. Are the grid lines to be color #1 and background color #2?

*A.17. The basin floor pattern consists of a terrazzo liner outlined with bronze strips. Please replicate the existing design, reference the ZMM Drawing A-12 provided, with the cold-applied waterproofing membrane. Resin color #1 is the bronze strips and resin color #2 is the terrazzo liner.*

18. Refer to sheet S202, Slab Cutting / Trenching Details and sheet P101; the structural plan indicated that the exposed concrete band is not be cut, but what about all the other sidewalks that have new plumbing lines that cross? If cutting the existing sidewalks are acceptable, note we are concerned about "tunneling under" as we suspect they do not contain reinforcing steel like the existing concrete band. Please clarify.

A.18 *The contractor shall tunnel under the existing concrete sidewalks in all locations for installation of new utilities, piping and/or conduits. Care shall be taken to not damage the concrete walk.*

19. General notes 5 & 6 of drawings A201, A202, A204, A205 and A301 indicates removal of existing and recaulking as per detail 4/A504. I believe that detail should be 5/A504 in lieu of 4/A504. Is this correct?

A.19. *The detail should be 5/A504 in lieu of 4/A504*

20. I assume that it is your intent for all limestone joints indicated to be resealed will be per detail 5/A504 with exception of the coping/ cornice areas which are called out to receive the lead weather caps. Is this correct?

A.20. *All limestone joints indicated to be resealed will be per detail 5/A504 with exception of the coping/ cornice areas which are called out to receive the lead weather caps.*

21. On detail 1/A503, are we to repoint the granite soldier course which abuts the granite walk being reset?

A.21. *The contractor is to repoint the granite soldier course which abuts the granite walk being reset.*

22. At prebid I believe it was stated that the following work was to be performed below the 13 granite benches shown on C101:

\* Clean granite pavers and adjacent concrete curb.

\* Reset loose granite pavers.

\* Repoint granite pavers 100%

I did not see this work indicated on the drawings. Please indicate if this work is to be performed?

A.22. *The scope of work shall be to reset 25% of the 6x6 Belgian granite pavers below the 13 granite benches, 100% of the pavers are to be repointed as per detail 1/A504, and the granite pavers as well as the adjacent concrete curb shall be cleaned. The benches are to be protected in place.*

23. At prebid, I believe it was stated that all the larger granite pavers not scheduled to be replaced or reset were to be repointed. I did not see this noted on drawings. Please indicate if this work is to be performed.

A.23. *All the larger granite pavers not scheduled to be replaced or reset are to be repointed per detail 2/A504.*

24. I need some direction from Drawing W103, Detail 6/W103 Basin Floor Pattern. I cannot find any specifications about the water proofing resin color #1 and color #2. Is there a drawing that shows the existing pattern that is to be matched? The existing pool has been covered with a black material the pattern cannot be seen.

A.24. *The original design drawing with the pattern (ZMM Drawing A-12 ) has been provided by Addendum and Detail 6/W103 is a partial plan of the original design. In terms of the color, the Owner would likely prefer to match the original design for historic purposes. The resins come in any color (similar to Home Depot making a custom paint color). If the Contractor can acquire a sample of the*



*replicate in resin (identified as 'WATERPROOFING RESIN COLOR #2' on 6/W103). The lines within the pattern ('WATERPROOFING RESIN COLOR #1') are the bronze strips outlining the terrazzo.*

25. Is there any way that the bid opening can be delayed at least one week so that we can clarify the different crafts and provide a competitive bid.

A.25. *The bid opening date will be changed to February 11<sup>th</sup>, 2014.*

#### Additional Clarification

- Detail 5/A504 currents is labeled "Pre-Cast Stone Repointing" and should be labeled "Limestone Repointing"
- The 30 round floor mounted grilles with-in the Memorial have been currently removed and the contractor shall be providing new per the contractor documents
- For the wall recessed walkway lights, there were a total of 48 fixtures; six have grilles missing as noted on the drawings. The contractor shall provide two addition grilles to match (a total of eight) are to be supplied allowing for two spares for the owner.
- An updated bid form is provided.
- An updated SECTION 01200 - PRICE AND PAYMENT PROCEDURES
- The electronic copy of the original ZMM construction drawings dated 1 Feb 1988 are being provided.
- Revised drawings C101, A101, A102, A201, A501, and A502 are being provided.

Veterans Memorial Restoration  
Charleston, West Virginia

---

**Pricing Page**  
(RFQ#GSD146406)

---

Dated: \_\_\_\_\_  
(Bidder to insert date bid submitted)

**SUBMITTED BY:**

\_\_\_\_\_ (hereinafter called "Bidder")

**SUBMITTED TO:** State of West Virginia  
Department Of Administration  
Purchasing Division

The Bidder, being familiar with local conditions affecting the cost of the Work and the Contract Documents, including Instructions to Bidders, Bid Form, General Conditions, Drawings, Specifications, and any Addenda or Clarifications issued, hereby propose to furnish all material, labor, tools, taxes, transportation and expendable equipment necessary for the satisfactory and complete installation of

**WEST VIRGINIA VETERANS MEMORIAL RESTORATION  
WEST VIRGINIA STATE CAPITOL COMPLEX  
CHARLESTON, WEST VIRGINIA**

in every detail and ready for operation, all in full accordance with, and in conformity to, the Contract Documents, for the stipulated sums as follows:

**BASE BID TO INCLUDE THE FOLLOWING:**

Provide stone restoration, repointing, water proofing, masonry repair, bronze restoration, EPDM roof replacement, complete lighting replacement, plumbing and site work of the Veterans Memorial as indicated on the Drawings and as specified.

For the lump sum amount of: \_\_\_\_\_  
\_\_\_\_\_ (\$\_\_\_\_\_).

---

Veterans Memorial Restoration

Charleston, West Virginia

**ALTERNATES:**

The stated Base Bid is subject to the following additions or deductions for Alternates which the Owner may select. ('Provide' means 'furnish and install.' Include in bids below all related coordination and modification requirements associated with the Work of each Alternate.) All work is to be as indicated on Drawings and as specified.

**Alternate Bid No. 1** – . Scope of work to upgrade electrical lighting controls as detailed on sheets E101-A1, E103-A1, E201-A1, the supporting specifications, and cut sheets.

ADD the sum of: \_\_\_\_\_  
\_\_\_\_\_ (\$ \_\_\_\_\_).

**UNIT PRICES:**

“Definition: A Unit Price is an amount stated in the Bid as a price per unit of measurement for materials, equipment or services or a portion of the Work as described in the Bidding Documents. Unit prices shall be used solely for the formulation of any change orders subsequently requested for the awarded contract.”

These Unit Prices include all materials, shipping, installation, tax, and contractor markup. Unit Prices may be stipulated in figures only. All work is to be as indicated on Drawings and as specified.

**Unit Price No. 1**

Masonry Repointing - Base Bid includes repointing 1000 Linear Feet (out of the total of approximately 2000 linear feet) of joints in the outer surfaces of the limestone pylons. If the actual quantity differs from the quantity included in the Base Bid,

ADD or DEDUCT the following: \$ \_\_\_\_\_ per Linear Foot.

**Unit Price No. 2**

Granite Paver Replacement - Base Bid includes 10 pieces as detailed on sheet A101 for a total of 500 square feet (of the total of approximately 1170 Square feet, 670 square feet is assumed to not require replacement). If the actual quantity differs from the quantity included in the Base Bid,

ADD or DEDUCT the following: \$ \_\_\_\_\_ per square foot.

**Unit Price No. 3** – Provide limestone veneer replacement as indicated on drawings in lieu of the specified stone repairs. The total square feet of stone repairs as a base bid is 40 square feet.

ADD or DEDUCT the following: \$ \_\_\_\_\_ per square foot.

\_\_\_\_\_

## Veterans Memorial Restoration

Charleston, West Virginia

---

**Unit Price No. 4** – Provide new 16 anodized 1/16" anodized bronze base covers in-kind at the bridge handrail in lieu of the specified re-anodization.

ADD or DEDUCT the following: \$ \_\_\_\_\_ per base cover.

**Unit Price No. 5** – Provide 8 anodized bronze caps and sidewalls in-kind at the bridge handrail in lieu of the specified re-anodization.

ADD or DEDUCT the following: \$ \_\_\_\_\_ per caps and sidewalls.

---

**REFERENCES**

Reference Name: \_\_\_\_\_

Position: \_\_\_\_\_

Address: \_\_\_\_\_

Telephone Number: \_\_\_\_\_

Project Name: \_\_\_\_\_

Project Description: \_\_\_\_\_

Reference Name: \_\_\_\_\_

Position: \_\_\_\_\_

Address: \_\_\_\_\_

Telephone Number: \_\_\_\_\_

Project Name: \_\_\_\_\_

Project Description: \_\_\_\_\_

Reference Name: \_\_\_\_\_

Position: \_\_\_\_\_

Address: \_\_\_\_\_

Telephone Number: \_\_\_\_\_

Project Name: \_\_\_\_\_

Project Description: \_\_\_\_\_

End of Bid Form

---

**ADDENDUM ACKNOWLEDGEMENT FORM**  
**SOLICITATION NO.:** GSD146406

**Instructions:** Please acknowledge receipt of all addenda issued with this solicitation by completing this addendum acknowledgment form. Check the box next to each addendum received and sign below. Failure to acknowledge addenda may result in bid disqualification.

**Acknowledgment:** I hereby acknowledge receipt of the following addenda and have made the necessary revisions to my proposal, plans and/or specification, etc.

**Addendum Numbers Received:**

(Check the box next to each addendum received)

- |   |  |
|---|--|
| <input type="checkbox"/> Addendum No. 1 | <input type="checkbox"/> Addendum No. 6  |
| <input type="checkbox"/> Addendum No. 2 | <input type="checkbox"/> Addendum No. 7  |
| <input type="checkbox"/> Addendum No. 3 | <input type="checkbox"/> Addendum No. 8  |
| <input type="checkbox"/> Addendum No. 4 | <input type="checkbox"/> Addendum No. 9  |
| <input type="checkbox"/> Addendum No. 5 | <input type="checkbox"/> Addendum No. 10 |

I understand that failure to confirm the receipt of addenda may be cause for rejection of this bid. I further understand that any verbal representation made or assumed to be made during any oral discussion held between Vendor’s representatives and any state personnel is not binding. Only the information issued in writing and added to the specifications by an official addendum is binding.

\_\_\_\_\_  
Company

\_\_\_\_\_  
Authorized Signature

\_\_\_\_\_  
Date

NOTE: This addendum acknowledgement should be submitted with the bid to expedite document processing.  
Revised 6/8/2012