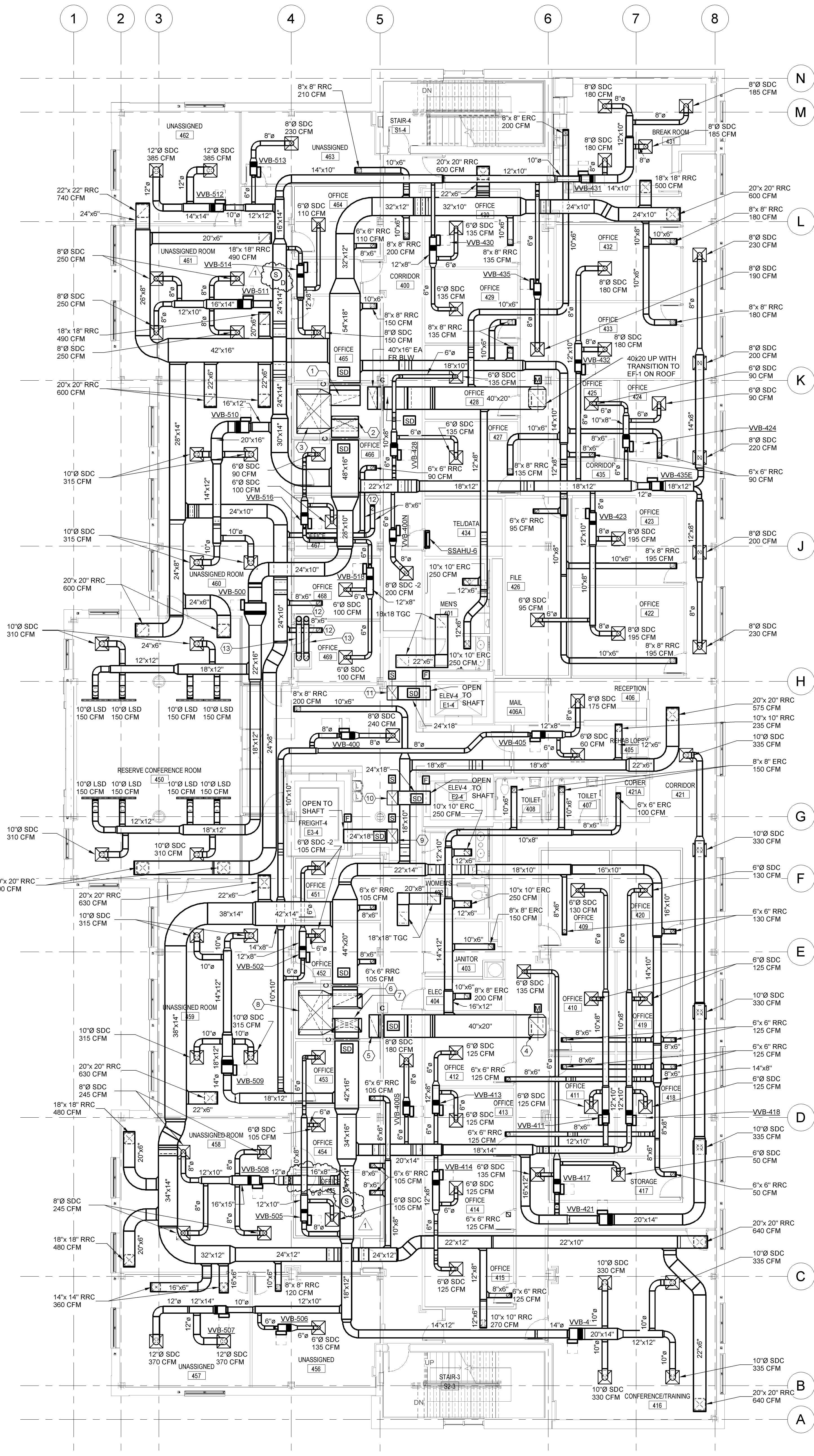


1 MECHANICAL FOURTH FLOOR PLAN - PIPING
1/8" = 1'-0"



2 MECHANICAL FOURTH FLOOR PLAN - DUCTWORK
1/8" = 1'-0"

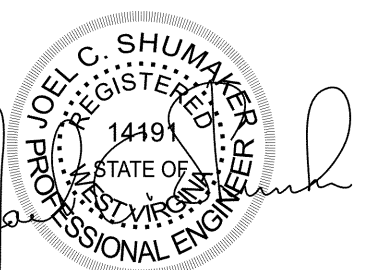
MECHANICAL KEYNOTES

- 1 54"x18" RETURN AIR DUCT DOWN
- 2 48"x18" SUPPLY AIR DUCT FROM BELOW
- 3 60"x60" OUTSIDE AIR DUCT FROM GRV-1 ABV. TRANSITION TO 78"x42" AND CONTINUE DOWN
- 4 40"x20" EXHAUST AIR DUCT UP WITH TRANSITION TO EF-2
- 5 40"x18" EXHAUST AIR DUCT FROM BELOW
- 6 44"x20" RETURN AIR DUCT DOWN
- 7 42"x18" SUPPLY AIR DUCT FROM BELOW
- 8 60"x60" OUTSIDE AIR DUCT FROM GRV-2 ABV. TRANSITION TO 78"x42" AND CONTINUE DOWN
- 9 24"x18" ELEVATOR SHAFT VENT UP TO GRV-5 ON ROOF
- 10 24"x18" ELEVATOR SHAFT VENT UP TO GRV-4 ON ROOF
- 11 24"x18" ELEVATOR SHAFT VENT UP TO GRV-3 ON ROOF
- 12 6"x6" RRC, 100 CFM
- 13 OFFSET BOILER VENTS TO BE A MINIMUM OF 8' AWAY FROM HIGH ROOF WALL ON ROOF ABOVE. VENTS SHALL BE WRAPPED WITH 2 HOUR FIRE PROOFING BETWEEN WHERE THEY EXIT SHAFT AND PENETRATE ROOF.

NOTE: ALL EXHAUST AND RETURN REGISTERS AND SUPPLY DIFFUSERS (UNLESS ONLY ONE IS SERVED BY A VAV BOX) SHALL HAVE MANUAL VOLUME CONTROL DAMPERS INSTALLED IN BRANCH DUCT SERVING THE REGISTER OR DIFFUSER. DAMPER SHALL BE AS CLOSE TO THE MAIN AS POSSIBLE. ANY DAMPERS LOCATED ABOVE HARD CEILING SHALL BE PROVIDED WITH A REMOTE CABLE ACTUATOR MOUNTED IN THE CEILING.

CLARKSBURG STATE OFFICE BUILDING
FOR
GENERAL SERVICES DIVISION
153 WEST MAIN STREET

H.F. LENZ
COMPANY
1407 Sculp Avenue
Johnstown, PA 15884-3329
Phone: 814-269-9301
FAX: 814-269-9300
www.hflenzen.com



REVISIONS		
No.	ITEM	DATE
1		3/7/2014



ALPHA ASSOCIATES, INC.
209 PRAIRIE AVENUE
MORGANTOWN, WV 26501
PHONE/FAX: 304-276-8216
TOLL FREE: 800-640-8216
www.thinkALPHAtrial.com

MECHANICAL FOURTH FLOOR PLAN

PROJ. NO.: 0810123.05
DATE: NOVEMBER 19, 2013
SHEET NO.:

M105

ISSUED FOR BIDDING