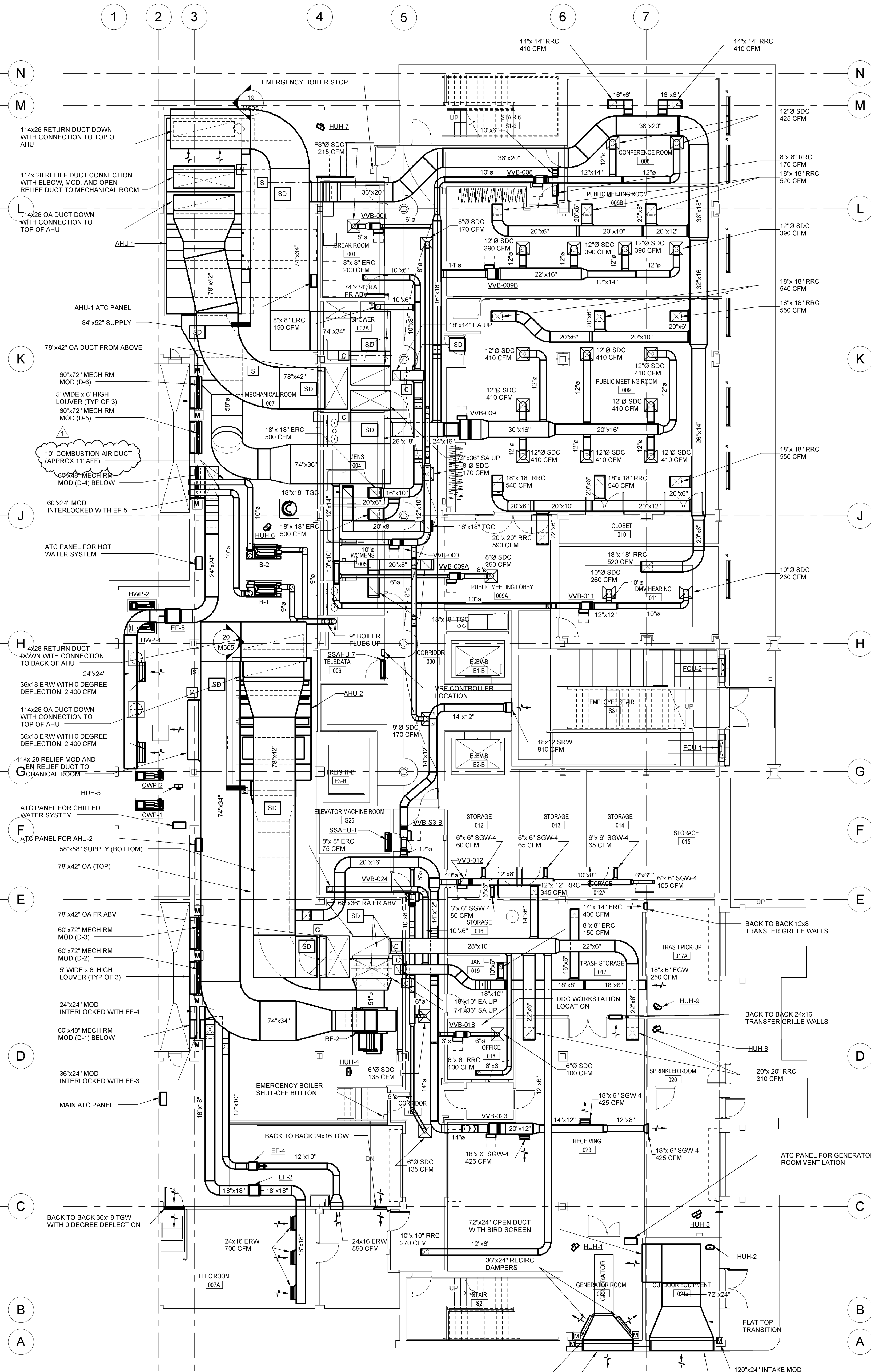


1 MECHANICAL BASEMENT FLOOR PLAN - PIPING
1/8" = 1'-0"



2 MECHANICAL BASEMENT FLOOR PLAN - DUCTWORK
1/8" = 1'-0"

NOTE: ALL EXHAUST AND RETURN REGISTERS AND SUPPLY DIFFUSERS (UNLESS ONLY ONE IS SERVED BY A VAV BOX) SHALL HAVE MANUAL VOLUME CONTROL DAMPERS INSTALLED IN BRANCH DUCT SERVING THE REGISTER OR DIFFUSER. DAMPER SHALL BE AS CLOSE TO THE MAIN AS POSSIBLE. ANY DAMPERS LOCATED ABOVE HARD CEILING SHALL BE PROVIDED WITH A REMOTE CABLE ACTUATOR MOUNTED IN THE CEILING.

CLARKSBURG STATE OFFICE BUILDING
FOR
GENERAL SERVICES DIVISION
153 WEST MAIN STREET

H.F. LENZ
COMPANY
1407 Sculp Avenue
Johnstown, PA 15904-3329
Phone: 814-269-9301
FAX: 814-269-9300
www.hflenz.com

JOEL C. SHUMAKER
REGISTERED PROFESSIONAL ENGINEER
STATE OF PENNSYLVANIA

REVISIONS		
No.	ITEM	DATE
1		3/7/2014

PROJ. NO.: 0810123.05
DATE: NOVEMBER 19, 2013
SHEET NO.:



ALPHA ASSOCIATES, INC.
209 PRAIRIE AVENUE
MORGANTOWN, WV 26501
PHONE/FAX: 304-276-8216
TOLL FREE: 800-440-8216
www.alphaassociates.com

MECHANICAL BASEMENT
FLOOR PLAN

M101

ISSUED FOR BIDDING

C:\Revit_User_Local\MEP-2008-05\Rev02-2013_jasland.rvt