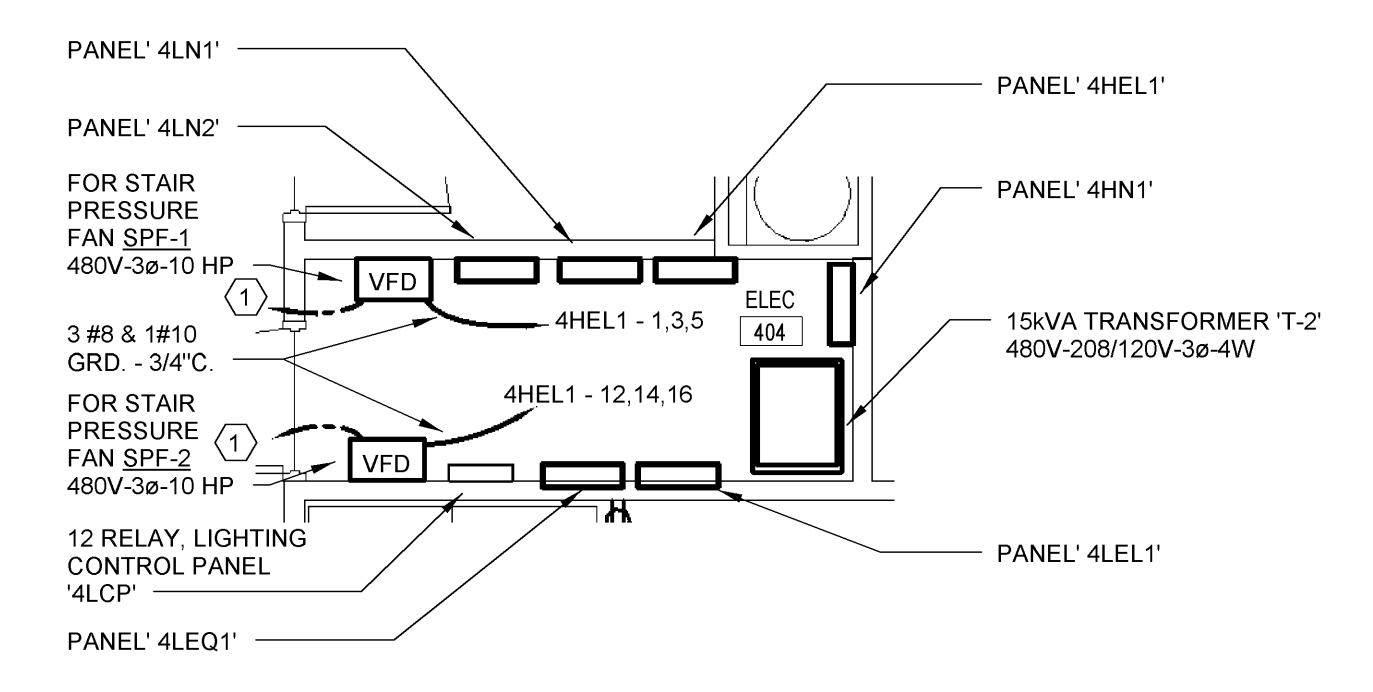


1 FOURTH FLOOR PLAN - POWER
SCALE: 1/8" = 1'-0"

⬡ - ELECTRICAL KEYNOTES

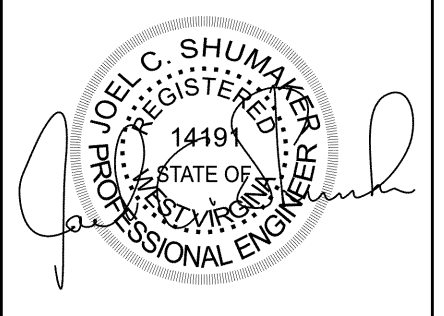
- 3#8, 1#10 GND, 3/4" C TO STAIR TOWER PRESSURIZATION FAN ON ROOF. SEE DRAWING E205.
- 1" EMT CONDUIT, WITH NYLON PULCORD, FROM BASEMENT LEVEL TO ROOF FOR TRASH CHUTE INTEGRATED DOOR POWER. PROVIDE DOUBLE GANG OUTLET BOX, INLINE WITH CONDUIT AT EACH INTEGRATED DOOR LOCATION FROM BASEMENT TO ROOF LEVEL.



2 ENLARGED ELECTRICAL ROOM FLOOR PLAN
SCALE: 1/4" = 1'-0"

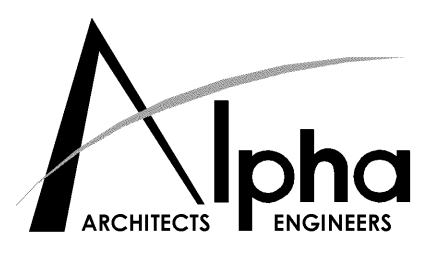
CLARKSBURG STATE OFFICE BUILDING
FOR
GENERAL SERVICES DIVISION
153 WEST MAIN STREET

H.F. LENZ COMPANY
1407 Sculp Avenue
Johnstown, PA 15904-3329
Phone: 814-269-9301
FAX: 814-269-9300
www.hflenz.com



Copyright 2013 Alpha Associates, Inc. All Rights Reserved.

REVISIONS		
No.	ITEM	DATE
1		3/7/2014



ALPHA ASSOCIATES, INC.
209 PRAIRIE AVENUE
MORGANTOWN, WV 26501
PHONE/FAX: 304-276-8216
TOLL FREE: 800-640-8216
www.alphaassociates.com

FOURTH FLOOR PLAN - POWER

PROJ. NO.: 0810123.05
DATE: NOVEMBER 19, 2013
SHEET NO.:

E205

ISSUED FOR BIDDING