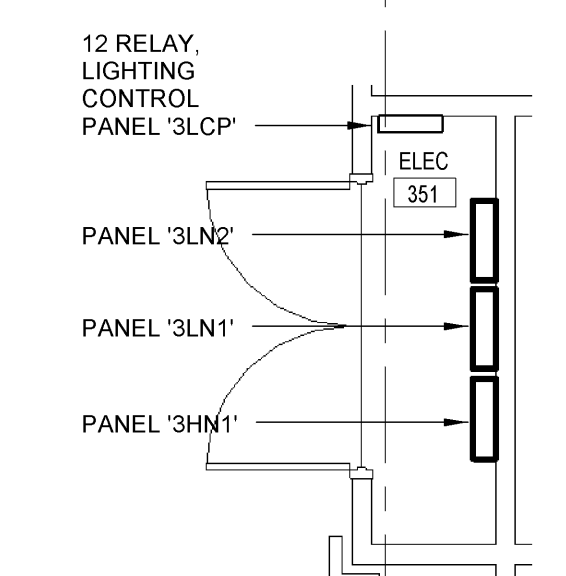


**1 - ELECTRICAL KEYNOTES**

1" EMT CONDUIT, WITH NYLON PULCORD, FROM BASEMENT LEVEL TO ROOF FOR TRASH CHUTE INTEGRATED DOOR POWER. PROVIDE DOUBLE GANG OUTLET BOX INLINE WITH CONDUIT AT EACH INTEGRATED DOOR LOCATION FROM BASEMENT TO ROOF LEVEL.



**2 ENLARGED ELECTRICAL ROOM FLOOR PLAN**

SCALE: 1/4" = 1'-0"

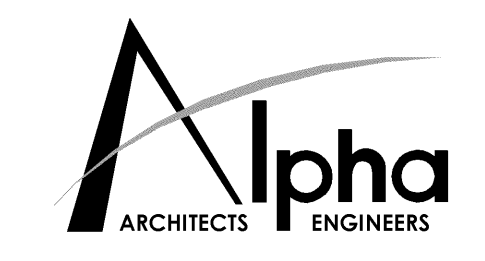
**1 ELECTRICAL THIRD FLOOR PLAN - POWER**

SCALE: 1/8" = 1'-0"

**CLARKSBURG STATE OFFICE BUILDING**  
 FOR  
**GENERAL SERVICES DIVISION**  
 153 WEST MAIN STREET

**H.F. LENZ COMPANY**  
 1407 Sculp Avenue  
 Johnstown, PA 15904-3329  
 Phone: 814-269-9301  
 FAX: 814-269-9300  
 www.hflenz.com

JOEL C. SHUMAKER  
 1410  
 STATE OF PENNSYLVANIA  
 PROFESSIONAL ENGINEER



ALPHA ASSOCIATES, INC.  
 209 PRAIRIE AVENUE  
 MORGANTOWN, WV 26501  
 PHONE/FAX: 304-276-8216  
 TOLL FREE: 800-640-8216  
 www.thinkALPHAfirst.com

REVISIONS		
No.	ITEM	DATE
1		3/7/2014

PROJ. NO.: 0810123.05  
 DATE: NOVEMBER 19, 2013  
 SHEET NO.:

**THIRD FLOOR PLAN - POWER**

**E204**

ISSUED FOR BIDDING