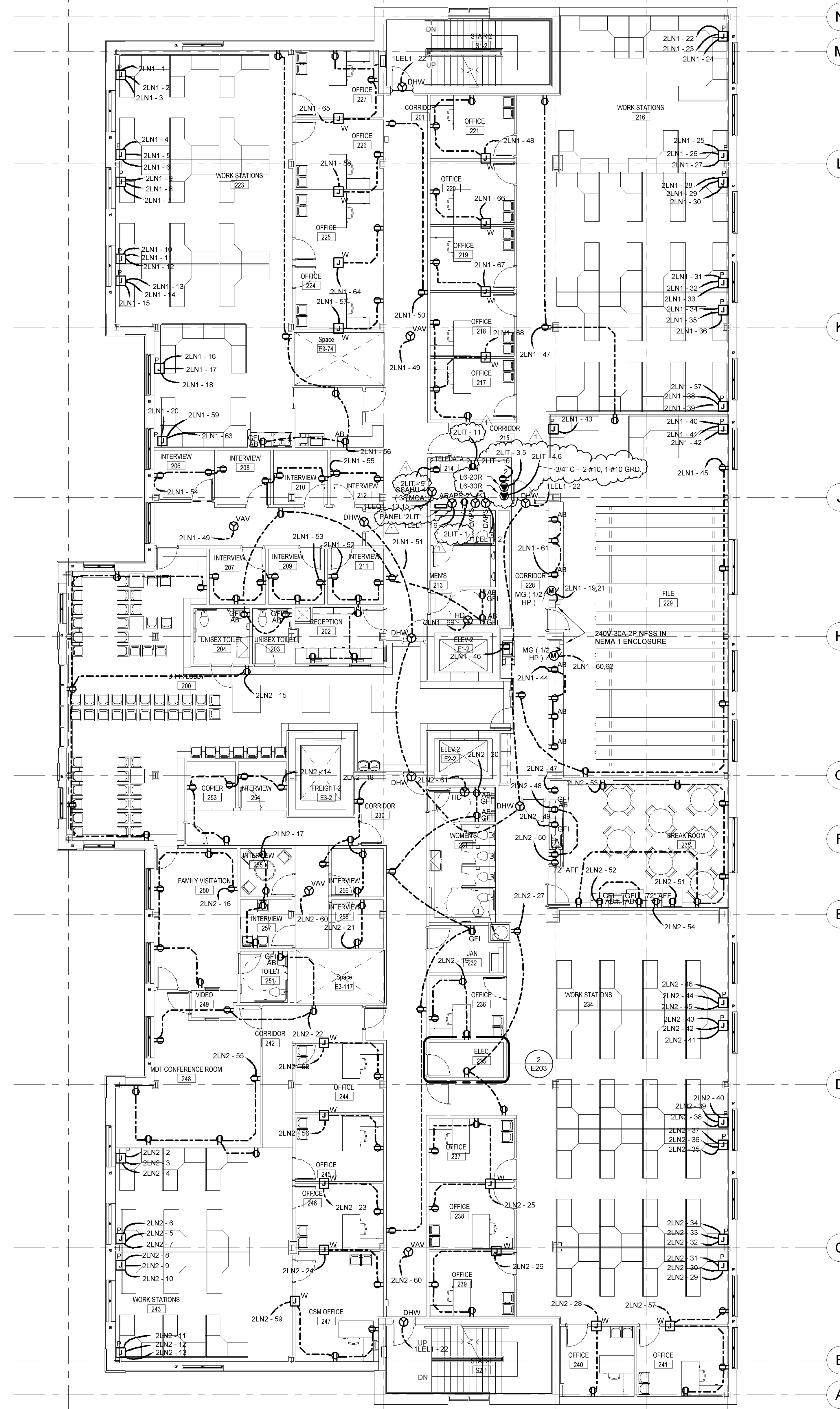
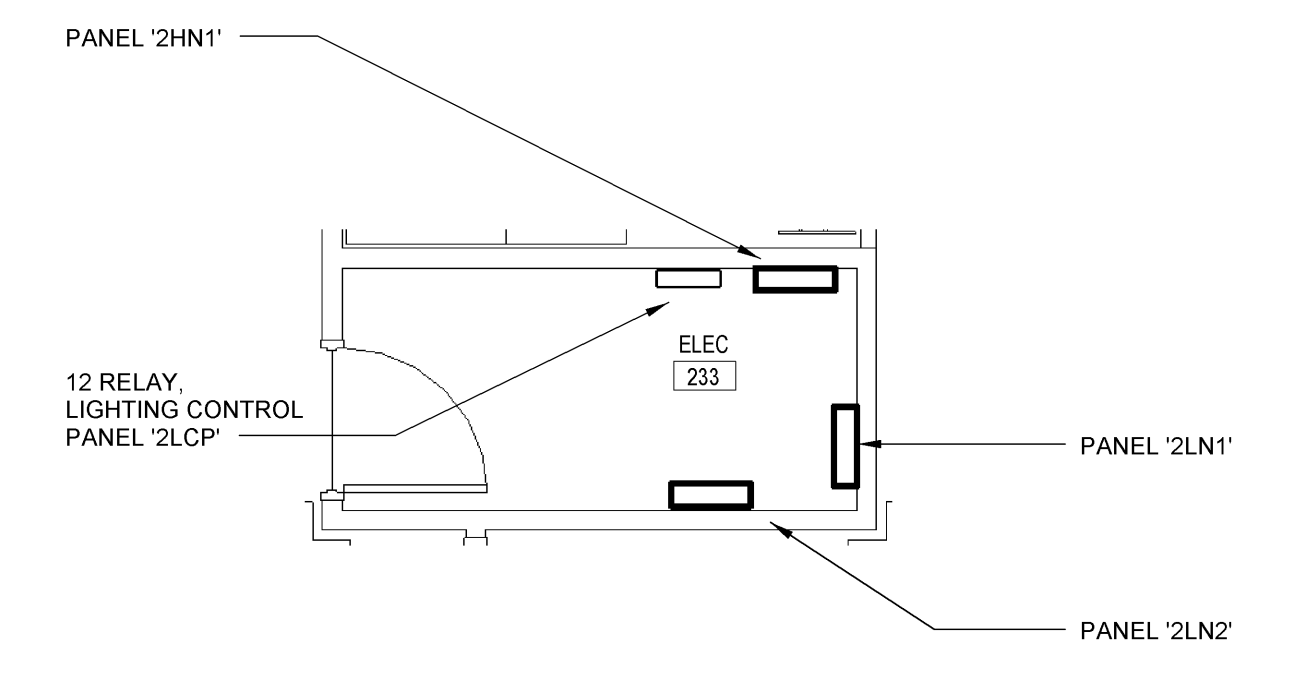


1 2 3 4 5 6 7 8



- ELECTRICAL KEYNOTES

1 1" EMT CONDUIT, WITH NYLON PULCORD, FROM BASEMENT LEVEL TO ROOF FOR TRASH CHUTE INTEGRATED DOOR POWER. PROVIDE DOUBLE GANG OUTLET BOX INLINE WITH CONDUIT AT EACH INTEGRATED DOOR LOCATION FROM BASEMENT TO ROOF LEVEL.



2 ENLARGED PLAN VIEW - ELECTRIC ROOM 205
SCALE: 1/4" = 1'-0"

1 ELECTRICAL SECOND FLOOR PLAN - POWER
SCALE: 1/8" = 1'-0"

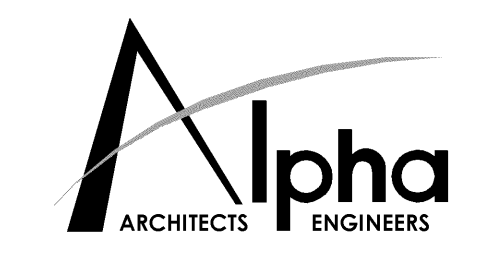
CLARKSBURG STATE OFFICE BUILDING
FOR
GENERAL SERVICES DIVISION
153 WEST MAIN STREET

H.F. LENZ COMPANY
1407 Sculp Avenue
Johnstown, PA 15904-3329
Phone: 814-269-9301
FAX: 814-269-9300
www.hflenz.com

JOEL C. SHUMAKER
REGISTERED PROFESSIONAL ENGINEER
STATE OF PENNSYLVANIA

REVISIONS		
No.	ITEM	DATE
1		2/7/2014

PROJ. NO.: 0810123.05
DATE: NOVEMBER 19, 2013
SHEET NO.:



ALPHA ASSOCIATES, INC.
209 PRAIRIE AVENUE
MORGANTOWN, WV 26501
PHONE/FAX: 304-276-8216
TOLL FREE: 800-640-8216
www.thinkALPHAfirst.com

SECOND FLOOR PLAN - POWER

E203

ISSUED FOR BIDDING