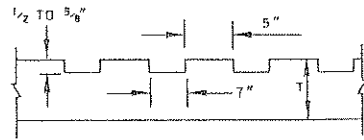


FIGURE 1



ALTERNATE SECTION B-B  
(SAWED RUMBLE STRIP)

RUMBLE STRIP FOR HOT MIX ASPHALT SHOULDERS

NOTES:

RUMBLE STRIP PLACEMENT WILL BE CONTINUOUS ON HOT-MIX ASPHALT SHOULDERS, EXCEPT AS NOTED BELOW.

RUMBLE STRIPS SHALL NOT BE PLACED AT THE FOLLOWING AREAS FOR NON-FREEWAY PROJECTS, ONLY:

ON SHOULDERS OF NARROW CLIMBING LANES THAT ARE 5' OR LESS IN WIDTH, RIGHT OF TRAFFIC FLOW IN THE SHOULDER TRANSITION AREA, RIGHT OF TRAFFIC FLOW, BETWEEN A FULL PAVED SHOULDER WIDTH OF 10' AND NARROW BRIDGE WIDTH OF 4'.

RUMBLE STRIP WIDTH IS TO BE 2', EXCEPT MILLED RUMBLE STRIP WHICH WILL BE 16"-17".

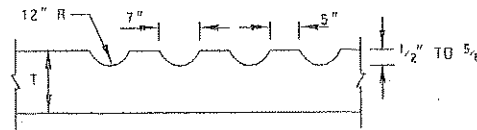
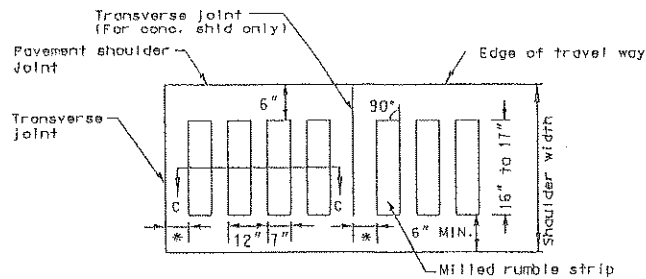
RUMBLE STRIPS MAY BE SAWED OR MILLED UNLESS OTHERWISE INDICATED. THE TOP OF THE RUMBLE STRIPS WILL BE NO HIGHER THAN THE TOP SURFACE OF THE PAVEMENT. ANY FAULTY OR INCORRECTLY INSTALLED RUMBLE STRIPS WILL BE CORRECTED BY THE CONTRACTOR AT HIS EXPENSE.

MILL/SAW SHOULDER RUMBLE STRIPS AS INDICATED BY USING A MACHINE CAPABLE OF PROVIDING A SMOOTH CUT WITHOUT TEARING OR SHAGGING, AND PRODUCING RUMBLE STRIPS AS INDICATED. EQUIP MACHINE WITH GUIDES TO PROVIDE UNIFORMITY AND CONSISTENCY IN ALIGNMENT OF EACH CUT WITH RESPECT TO ROADWAY. MILL SHOULDER RUMBLE STRIPS TO HAVE FINISH DIMENSIONS WITHIN TOLERANCES SPECIFIED. MILL SHOULDER RUMBLE STRIPS ON NEW CONCRETE SHOULDERS AFTER CURING. ALIGNMENT OF PATTERN EDGE WILL BE RANDOMLY VERIFIED AND CHECKED. DISCONTINUE MILLING OPERATIONS IF SATISFACTORY RESULTS ARE NOT BEING OBTAINED AND SUBMIT AN ALTERNATE CONSTRUCTION PLAN TO THE ENGINEER FOR APPROVAL. AT END OF EACH WORKING DAY, MOVE ALL EQUIPMENT TO A LOCATION AS DIRECTED WHERE IT PRESENTS NO HAZARD TO ROADWAY TRAFFIC. REMOVE AND DISPOSE OF MILLED MATERIAL IN COMPLIANCE WITH APPLICABLE STATE REGULATIONS. REMOVE DEBRIS FROM AREAS DISTURBED BY MILLING OPERATION BEFORE OPENING ROADWAY TO TRAFFIC.

RUMBLE STRIPS IN PAVED SHOULDERS:

RUMBLE STRIPS SHALL BE MILLED OR SAWED TYPE PLACED IN SHOULDERS UNDER THE FOLLOWING CONDITIONS, IN ACCORDANCE WITH THIS SPECIAL DETAIL SHEET:

- TYPICAL SHOULDER WIDTH IS 8' OR MORE;
- MEDIAN SHOULDERS ON DIVIDED HIGHWAYS, IF SHOULDER WIDTH IS 3' OR GREATER;
- SHOULDERS ADJACENT TO ONE WAY RAMPS WHICH CONNECT TO ARTERIAL HIGHWAYS, IF TYPICAL SHOULDER IS 3' OR GREATER.



SECTION C-C  
(MILLED RUMBLE STRIP)

- \* 7" ± 1/2" For conc. shld.
- 2" ± 1/2" For asphalt shld.

MILLED RUMBLE STRIP FOR PORTLAND CEMENT AND HOT MIX ASPHALT SHOULDERS