

STATE DIST. NO.	STATE PROJECT NUMBER	FEDERAL PROJECT NUMBER	FISCAL YEAR	COUNTY	SHEET NO.	TOTAL SHEETS
WV	0020-100/6.07	-	2013	KANAWHA	98	108

ELECTRICAL DEMO NOTES

1. ELECTRICAL CONTRACTOR SHALL DISCONNECT AND REMOVE ALL ELECTRICAL WORK NOT INDICATED TO REMAIN. THIS INCLUDES BUT NOT LIMITED TO LIGHTING FIXTURES, RECEPTACLES, PANEL BOARDS, CONDUIT, JUNCTION BOXES AND WIRING. CONTRACTOR SHALL COORDINATE WITH ARCHITECTURAL DRAWINGS AND VISIT THE SITE PRIOR TO BIDDING, DETERMINE EXISTING CONDITIONS, EXTENT OF REMOVAL WORK AND MAKE ALLOWANCE FOR SUCH WORK.

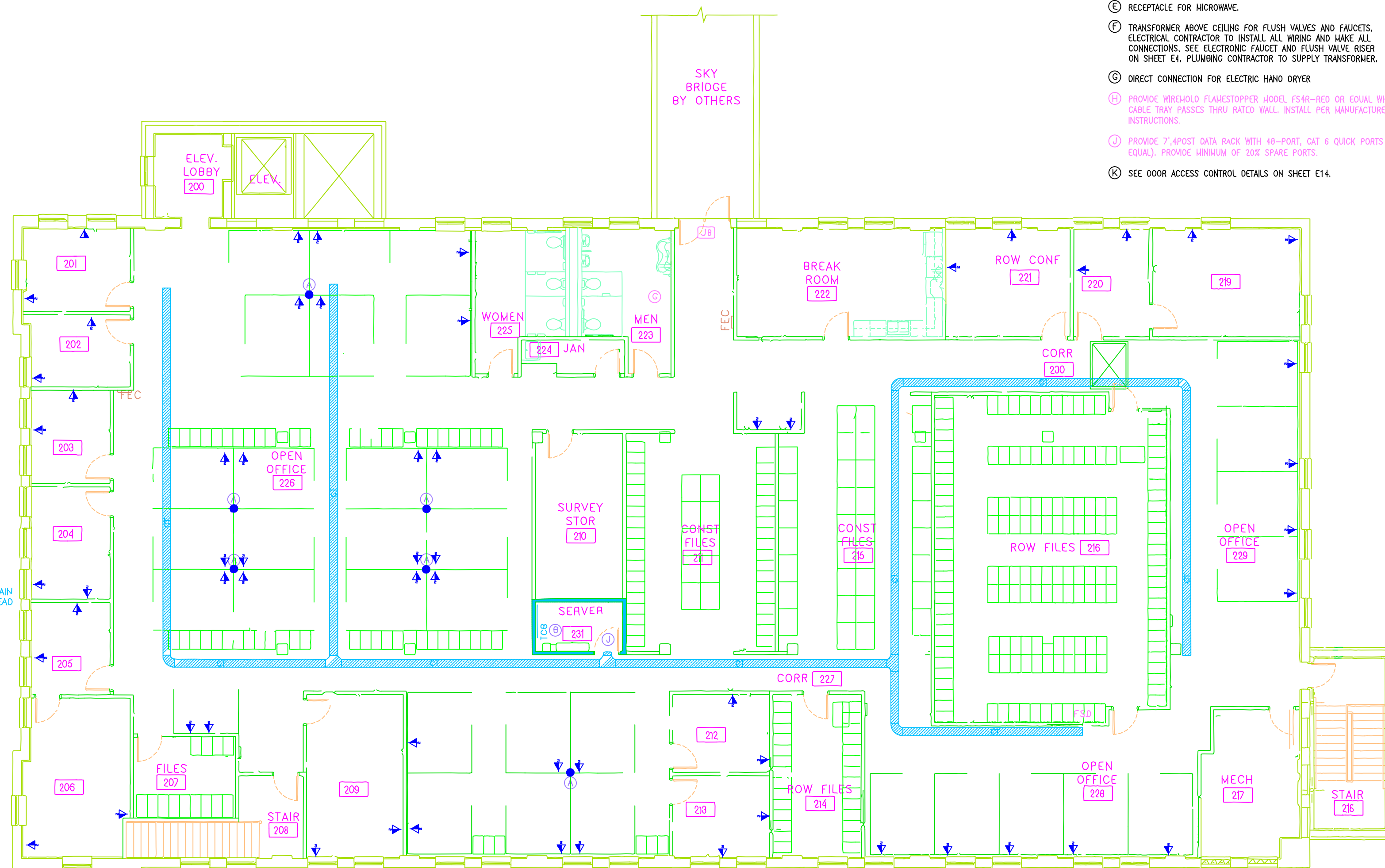
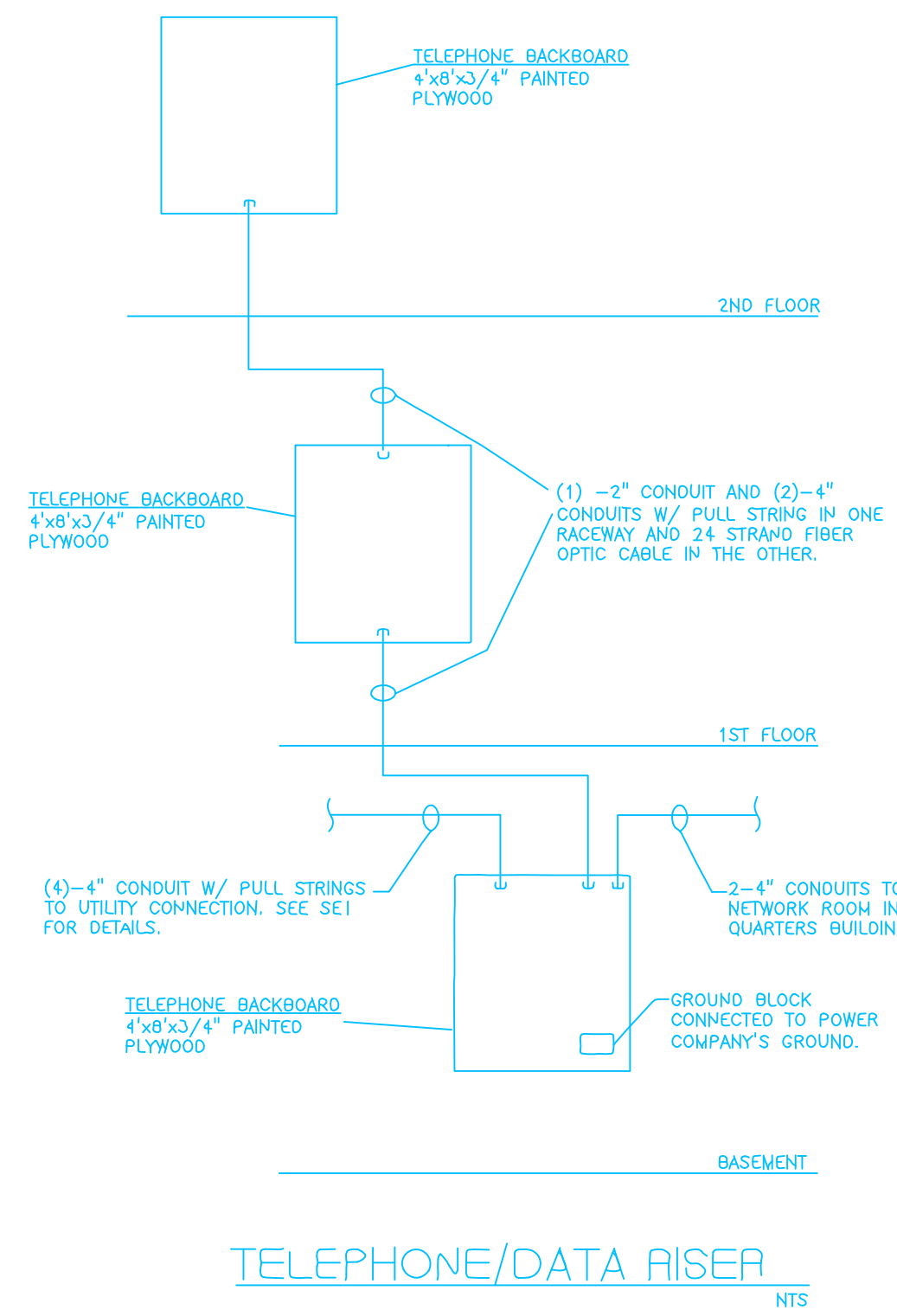
NOTES:

- CABLE TRAY SHALL BE MINIMUM OF 12"x6".
- RECEPTACLES IN EXISTING WALLS SHALL USE SHALLOW OUTLET BOXES.

PLAN NOTES:

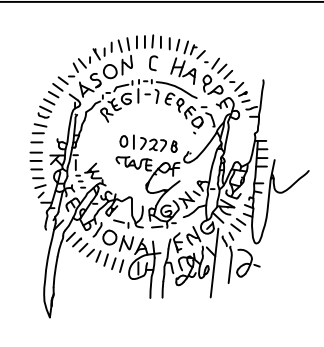
- (A) PROVIDE TELE-POWER POLE SYSTEM (WIRESHOLD J07P-4V OR EQUAL) FROM CUBICLE WALL TO CEILING.
- (B) SEE TELEPHONE/DATA RISER ON THIS SHEET.
- (C) RANGE HOOD.
- (D) RECEPTACLE FOR RANGE.
- (E) RECEPTACLE FOR MICROWAVE.
- (F) TRANSFORMER ABOVE CEILING FOR FLUSH VALVES AND FAUCETS. ELECTRICAL CONTRACTOR TO INSTALL ALL WIRING AND MAKE ALL CONNECTIONS. SEE ELECTRONIC FAUCET AND FLUSH VALVE RISER ON SHEET E4. PLUMBING CONTRACTOR TO SUPPLY TRANSFORMER.
- (G) DIRECT CONNECTION FOR ELECTRIC HAND DRYER
- (H) PROVIDE WIRESHOLD FLAMESTOPPER MODEL FS4R-RED OR EQUAL WHERE CABLE TRAY PASSES THRU RATED WALL. INSTALL PER MANUFACTURER'S INSTRUCTIONS.
- (I) PROVIDE 7'-4" POST DATA RACK WITH 48-PORT, CAT 6 QUICK PORTS (OR EQUAL). PROVIDE MINIMUM OF 20% SPARE PORTS.
- (K) SEE DOOR ACCESS CONTROL DETAILS ON SHEET E14.

DISTRICT 1 HQ



DOT-DOH-District 1
HQ SRC Building
SECOND FLOOR POWER PLAN
SCALE: 1/8"=1'-0"

61 - Drop Locations
122 - Cable Runs



Designed By: JEH
Checked By: JEH
Drawn By: STAFF
Job No. 12007
Scale: AS NOTED
Date: SEPTEMBER 2012



REVISION	DATE	BY

WEST VIRGINIA DEPARTMENT OF TRANSPORTATION
DIVISION OF HIGHWAYS
SRC BUILDING RENOVATIONS
STATE PROJECT TBD

SECOND FLOOR POWER PLAN
SHEET NO. E6