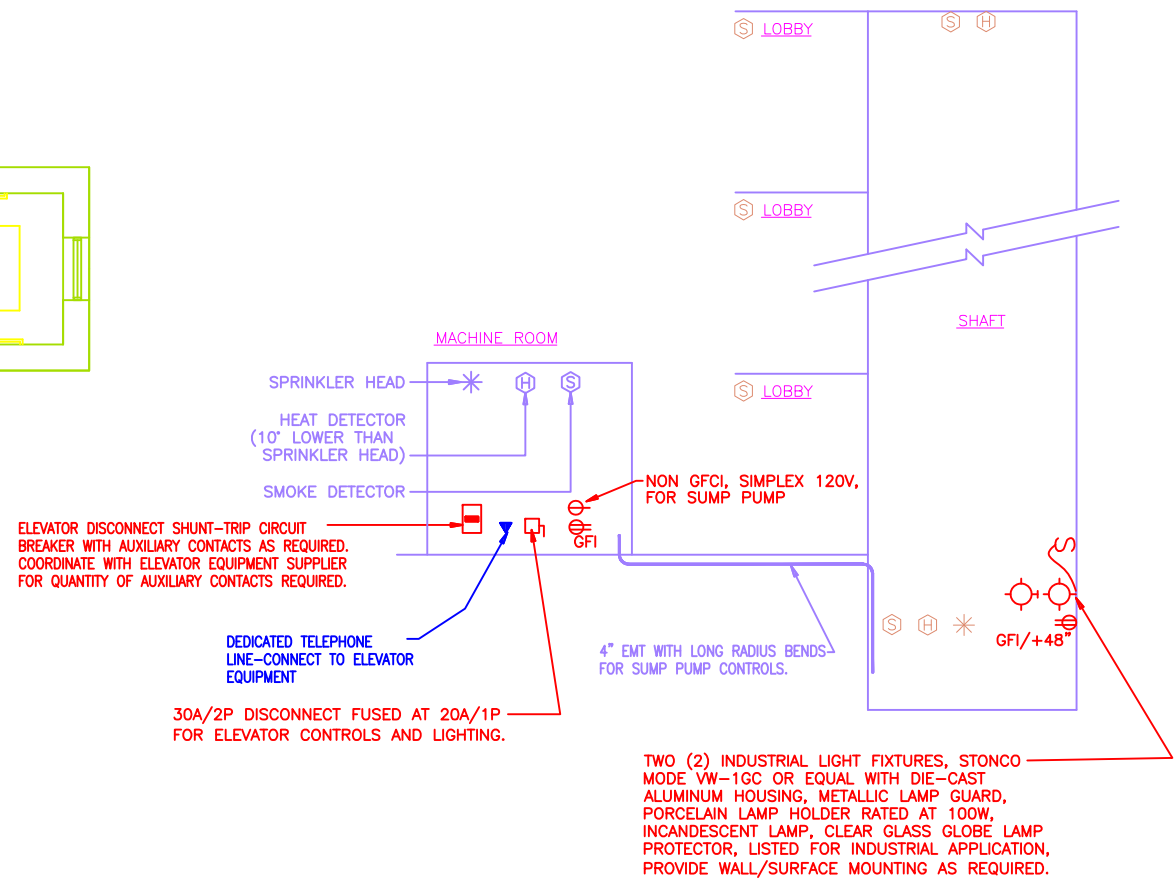
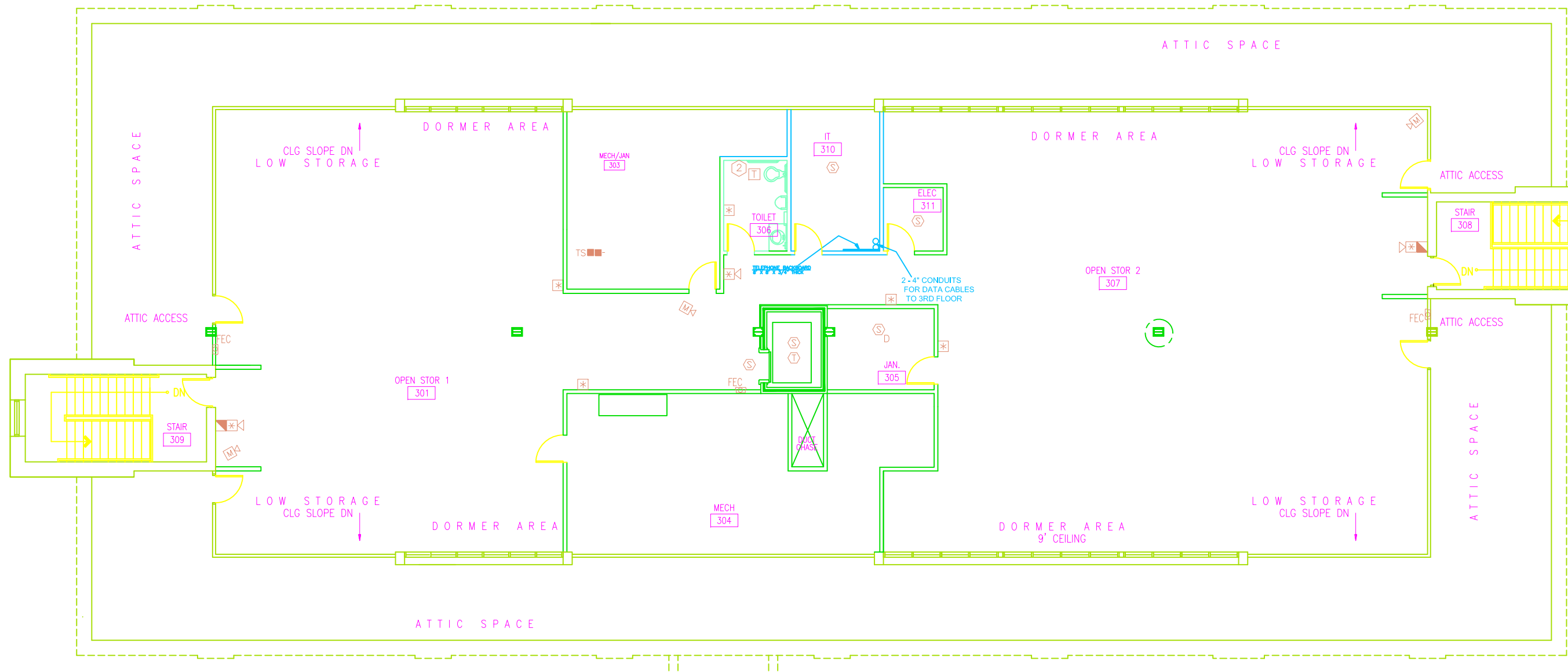


# DOT-DOH-District 1 HQ Building THIRD FLOOR

PUBLIC ROADS DIV.	STATE DIST. NO.	STATE PROJECT NO.	FEDERAL PROJECT NO.	FISCAL YEAR	COUNTY	SHEET NO.	TOTAL SHEETS
WV	1	GO20-HDQ/6. 02		2013	KANAWHA	49	52



### FIRE ALARM / ELECTRICAL / SPRINKLER REQUIREMENTS FOR ELEVATOR

- NO SCALE
- NOTES
- ELEVATORS WITH BATTERY EMERGENCY LOWERING WILL RETURN TO DESIGNATED FLOOR UPON LOSS OF POWER AND DOORS WILL OPEN.
  - ITS IS THE ELECTRICAL CONTRACTOR'S RESPONSIBILITY TO FIELD VERIFY AND CONFIRM CORRECT ELECTRICAL REQUIREMENTS, INCLUDING BUT NOT LIMITED TO, VOLTAGE AND PHASE BEFORE ANY EQUIPMENT IS ORDERED.

NOTE:  
COMBINATION DISCONNECT/STARTERS FOR OAH-1 THRU OAH-4 AND OAH-6 SHALL BE 3P/30A W/NEMA-1 STARTERS.

### THIRD FLOOR POWER PLAN

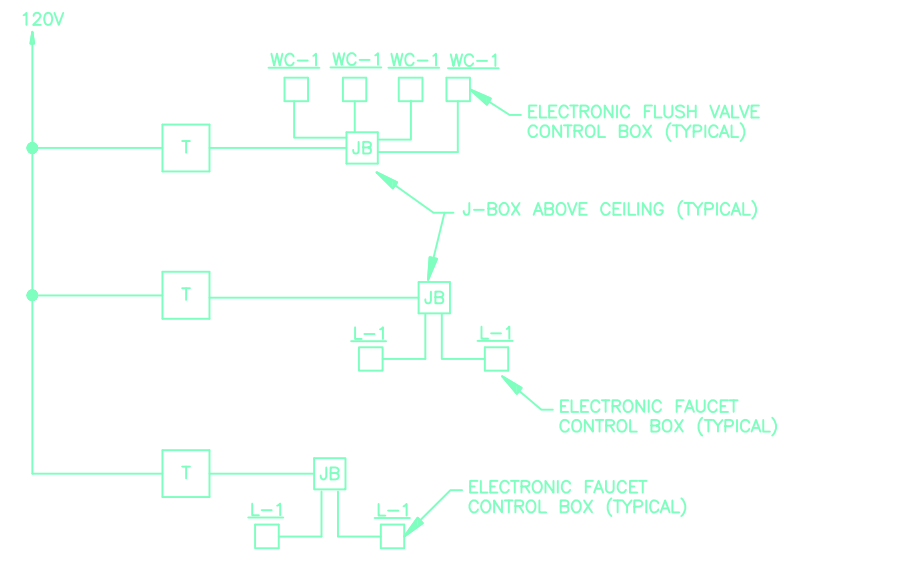
SCALE: 1/8" = 1'-0"

### PLAN NOTES:

- POWER FOR HVAC UNIT "0-DU-1" IS SUPPLIED BY HVAC UNIT "0-CU-10". COORDINATE WITH EQUIPMENT SUPPLIER AND MECHANICAL CONTRACTOR FOR ALL REQUIREMENTS AND DETAILS. SEE PLAN NOTE #15 ON DWG. "EO-4".
- PLUMBING CONTRACTOR IS TO SUPPLY TRANSFORMER FOR AUTOMATIC FLUSH VALVES AND FAUCET VALVES. ELECTRICAL CONTRACTOR IS TO RECEIVE TRANSFORMER AND INSTALL ABOVE ACCESSIBLE CEILING WITH ALL WIRING AND CONNECTIONS. THERE IS TO BE NO EXPOSED WIRING. SEE DETAIL THIS DRAWING. ONE TRANSFORMER CAN OPERATE UP TO EIGHT (8) DEVICES. CIRCUIT AS SHOWN.

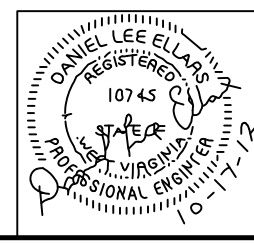
### GENERAL ELECTRICAL NOTES (GN SERIES)

- GN1: COORDINATE LOCATIONS OF CEILING-MOUNTED LIGHTING FIXTURES, SPEAKERS AND OTHER ITEMS WITH THE CEILING PATTERN AND MECHANICAL EQUIPMENT.
- GN2: CENTER WALL-MOUNTED LIGHTING FIXTURES DIRECTLY OVER ANY RELATED LAVATORY, MIRROR, OR OTHER EQUIPMENT.
- GN3: LOCATE FLOOR SERVICE FITTINGS, FLOOR BOXES AND FLOOR CONDUIT TERMINATIONS APPROXIMATELY AS INDICATED, EXACTLY AS NECESSARY OR AS DIRECTED TO COORDINATE WITH THE ASSOCIATED FURNISHINGS OR EQUIPMENT.
- GN4: LOCATE DUPLEX RECEPTACLES DESIGNATED "ewc" TO BE CONCEALED BY THE ASSOCIATED WATER COOLER.
- GN5: LOCATE SNAP SWITCHES APPROXIMATELY 4 TO 6 INCHES FROM THE LATCH SIDE OF THE RELATED DOOR FRAME WHERE POSSIBLE, EXCEPT AS INDICATED OTHERWISE.
- GN6: LOCATE SNAP SWITCHES DIRECTLY UNDER THERMOSTATS WHERE THEY ARE SHOWN IN CLOSE PROXIMITY (SEE MECHANICAL DRAWINGS).
- GN7: LOCATE WALL BOXES APPROXIMATELY AS INDICATED, EXACTLY AS DIRECTED OR AS NECESSARY TO ACHIEVE SYMMETRY AND COORDINATED WITH THE BUILDING, FINISHES AND EQUIPMENT.
- GN8: LOCATE ALL BOXES TO BE ACCESSIBLE.
- GN9: MOUNT FLUSH BOXES WITH THEIR FRONT EDGES EVEN WITH THE FINISHED SURFACE OF COMBUSTIBLE MATERIALS, WITHIN 1/4 INCH OF NON-COMBUSTIBLE MATERIALS.
- GN10: MOUNT SINGLE-GANG BOXES WITH THE LONGER DIMENSION VERTICAL EXCEPT AS NOTED OTHERWISE. MOUNT ALL BOXES AND PLATES PLUMB.
- GN11: DO NOT INSTALL BOXES BACK-TO-BACK ON BOTH SIDES OF A PARTITION. OFFSET BOXES A MINIMUM OF 6 INCHES EXCEPT AS NOTED OTHERWISE.
- GN12: LOCATE ALL RACEWAYS TO AVOID INTERFERENCE WITH DUCTS, PIPES, MECHANICAL EQUIPMENT, WITH REMOVAL OF CEILING TILES, OR WITH ACCESS TO EQUIPMENT THAT REQUIRES PERIODIC ADJUSTMENT OR MAINTENANCE.
- GN13: DO NOT SUPPORT RACEWAYS OR EQUIPMENT FROM PIPES, DUCTS, OR A CEILING SUSPENSION SYSTEM.
- GN14: BRANCH CIRCUIT AND FEEDER NUMBERS ARE GENERALLY INDICATED BY NUMBER DESIGNATION ONLY.
- GN15: INSTALL FEEDER RACEWAYS WITH NO MORE THAN 3 CURRENT-CARRYING CONDUCTORS PLUS A NEUTRAL CONDUCTOR, PLUS A GROUND CONDUCTOR.
- GN16: INDICATED BRANCH CIRCUIT CONDUCTOR SIZES ARE BASED ON NO MORE THAN 3 CURRENT-CARRYING CONDUCTORS AND A NON-CURRENT-CARRYING NEUTRAL CONDUCTOR IN EACH RACEWAY. WHERE THE NUMBER OF CONDUCTORS EXCEEDS THIS AMOUNT, ADJUST CONDUCTOR SIZES IF AND AS NECESSARY TO ACCOUNT FOR DERATING THEIR AMPACITY IN ACCORDANCE WITH THE NATIONAL ELECTRICAL CODE.
- GN17: FOR EACH INDICATED CONNECTION TO EQUIPMENT, PROVIDE AN OUTLET BOX AND FLEXIBLE CONDUIT AS APPROPRIATE FOR THE ASSOCIATED EQUIPMENT. WHERE THE EQUIPMENT INCLUDES A CORD AND PLUG, PROVIDE A COMPATIBLE RECEPTACLE. WHERE REQUIRED BY CODE, PROVIDE AN ADJACENT SAFETY DISCONNECT SWITCH.
- GN18: NOT USED
- GN19: PROVIDE AN ADJACENT DISCONNECT SWITCH FOR EACH ELECTRIC UNIT HEATER.
- GN20: IN MECHANICAL ROOMS ADJUST LIGHTING FIXTURE LOCATIONS AS NECESSARY TO COORDINATE WITH EQUIPMENT AND TO PROVIDE OPTIMUM ILLUMINATION.
- GN21: LOCATE TELEPHONE & DATA OUTLETS APPROXIMATELY AS SHOWN ON DWGS. COORDINATE EXACT LOCATIONS OF EQUIPMENT WITH FURNISHINGS AND EQUIPMENT DRAWINGS.
- GN22: WHERE EMERGENCY LIGHTING FIXTURES ARE CONTROLLED BY ONE OR MORE WALL SWITCHES, PROVIDE AN UNSWITCHED CIRCUIT CONDUCTOR FOR OPERATION OF THE EMERGENCY CONTROLS.
- GN23: MOUNT EXTERIOR WALL-MOUNTED LIGHTING FIXTURES APPROXIMATELY AS SHOWN, EXACTLY AS DIRECTED OR AS INDICATED ON THE ARCHITECTURAL DRAWINGS.
- GN24: PROVIDE A ROOF-MOUNTED WEATHERPROOF DUPLEX GFI RECEPTACLE ADJACENT TO EACH ITEM OF ROOF-MOUNTED HVAC EQUIPMENT OTHER THAN EXHAUST FANS, IF THE EQUIPMENT DOES NOT INCLUDE AN INTEGRAL CONVENIENCE RECEPTACLE. CONNECT TO THE 120 VOLT CIRCUIT SERVING RECEPTACLES IN THE CORRIDOR BELOW.
- GN25: WHERE LIGHTING FIXTURES ARE SHOWN CONTROLLED BY TWO SWITCHES, FOR TWO-LEVEL CONTROL, CONNECT THE OUTSIDE LAMPS TO ONE SWITCH AND THE INSIDE LAMPS(S) TO THE OTHER SWITCH.
- GN26: PROVIDE WEATHERPROOF ADJUSTABLE PHOTOCELL CONTROL UNITS IN ACCESSIBLE ROOF LOCATIONS TO PROVIDE AUTOMATIC LIGHT CONTROLS AS INDICATED. PROVIDE ASSOCIATED RELAYS AND/OR CONTACTORS AS NECESSARY FOR REQUIRED CONTACT QUANTITIES AND RATINGS. LOCATE CONTACTORS AND/OR RELAYS IN EQUIPMENT ROOMS OR ABOVE CEILINGS.
- GN27: COORDINATE OUTLET LOCATIONS AND CIRCUIT RATINGS WITH EQUIPMENT SHOWN ON THE MECHANICAL AND PLUMBING DRAWINGS AND WITH ALL EQUIPMENT AND FURNISHINGS SHOWN ON THE ARCHITECTURAL DRAWINGS.



### WIRING SCHEMATIC FOR ELECTRONIC FLUSH VALVES AND FAUCETS (TYPICAL)

NO SCALE



**CMA ENGINEERING**

Clingenpeel/McBrayer & Assoc. Inc.  
824 CROSS LANES DRIVE  
CHARLESTON, WV 25313  
PHONE (304) 343-0316

5 RIDDLE COURT  
MORGANTOWN, WV 26505  
PHONE (304) 598-2558

REVISION NUMBER	SHEET NUMBER	REVISIONS	DATE	BY

**ETB**

DISTRICT 1 HEADQUARTERS COMPLEX  
CHARLESTON WEST VIRGINIA

THIRD FLOOR POWER PLAN  
SCALE: 1/8" = 1'-0"

E. T. BOGESS, ARCHITECT, INC.  
PRINCETON WEST VIRGINIA

DATE: 10/17/12 PROJECT NO: 1104 CADD FILE: 1104-AP1 SHEET NO: EO-6