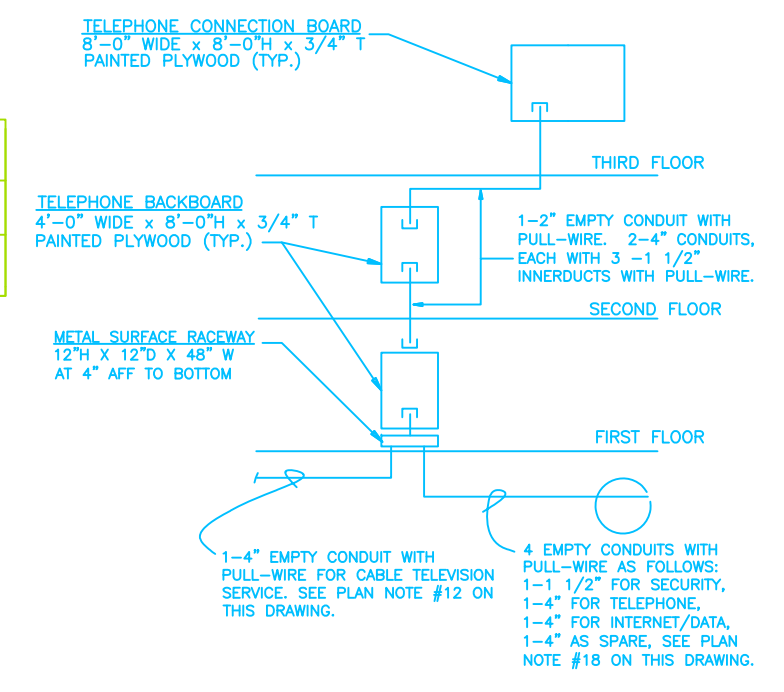
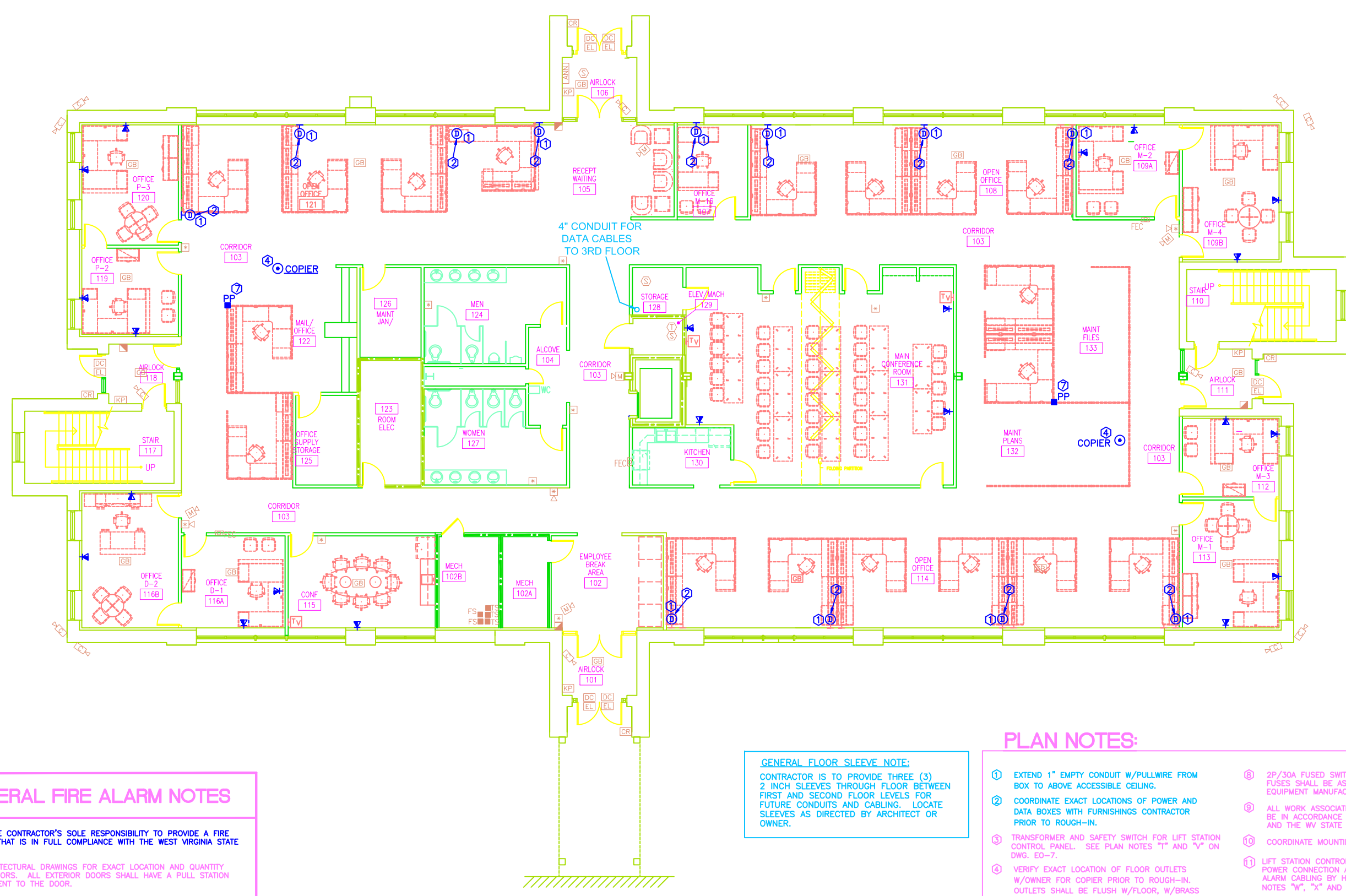


# DOT-DOH-District 1 HQ Building

## FIRST FLOOR

FEDERAL PROJECT NO.	STATE PROJECT NO.	FISCAL YEAR	COUNTY	SHEET NO.	TOTAL SHEETS
0202-HQ/6.02		2013	KANAWHA	47	52

SYMBOL	DESCRIPTION
	FLOUORESCENT LIGHT FIXTURE, LETTER DENOTES TYPE
	STRIP OR INDUSTRIAL FLOUORESCENT LIGHTING FIXTURE
	FLOUORESCENT LIGHTING FIXTURE W/EMERG. BATTERY PACK
	WALL MTD. LIGHT FIXTURE
	EXIT LIGHT, SHADED SIDE DENOTES FACE
	WALL MOUNTED EXIT LIGHT
	COMPACT FLOUORESCENT OR HID LIGHTING FIXTURE
	EMERGENCY LIGHT SET
	SINGLE POLE SNAP SWITCH
	THREE-WAY SNAP SWITCH
	FOUR-WAY SNAP SWITCH
	MANUAL MOTOR STARTER W/THERMAL OVERLOAD
	MANUAL MOTOR STARTER
	DUAL SWITCHING
	COMBINATION TELEPHONE/DATA OUTLET, SINGLE GANG BOX W/ FLUSH BLANK COVER PLATE, EXTEND 3/4" EMPTY CONDUIT W/PULL WIRE FROM BOX TO ABOVE ACCESSIBLE CEILING.
	SPECIAL PURPOSE OUTLET
	QUADRUPEX CONVENIENCE OUTLET
	DUPLEX CONVENIENCE OUTLET
	MOTOR CONNECT
	JUNCTION BOX
	ELECTRIC WATER COOLER
	GROUND FAULT CIRCUIT INTERRUPTER
	TELEVISION OUTLET FOR CABLE SYSTEM, WALL MOUNTED, SEE DETAIL.
	MOTOR OPERATED DAMPER
	WEATHERPROOF
	FLOW SWITCH - FIRE ALARM SYSTEM CONNECTION
	TAMPERS SWITCH - FIRE ALARM SYSTEM CONNECTION
	ELECTRICAL PANELBOARD
	COMBINATION STARTER/FUSED DISCONNECT
	MECHANICAL EQUIPMENT DESIGNATION NOTATION
	FUSED SAFETY SWITCH (NF - NON-FUSED)
	FIRE ALARM SYSTEM - THERMAL DETECTOR
	FIRE ALARM SYSTEM - CEILING MOUNTED SMOKE DETECTOR
	DUCT MOUNTED SMOKE DETECTOR
	FIRE ALARM SYSTEM - MANUAL PULL STATION
	FIRE ALARM SYSTEM - VISUAL ALARM INDICATING DEVICE +80"
	COMBINATION AUDIBLE/VISUAL (STROBE) FIRE ALARM SIGNAL.
	PLAN NOTE
	FIRE ALARM CONTROL PANEL
	SINGLE GANG OUTLET BOX FOR TELEPHONE/DATA WIRING
	RANGE HOOD FIRE SUPPRESSION CONTACT
	POWER MODULE FOR VAV DIFFUSERS
	INTRUSION DETECTION/ACCESS CONTROL-DOOR CONTACT SWITCH
	ACCESS CONTROL ELECTRIC DOOR LOCK
	INTRUSION DETECTION ACCESS KEYPAD
	ACCESS CONTROL CARD READER
	INTRUSION DETECTION GLASS BREAK DETECTOR
	INTRUSION DETECTION MOTION SENSOR
	SECURITY CONTROL PANEL
	CCTV CAMERA, INTERIOR UNITS ARE CEILING MOUNTED, EXTERIOR UNITS ARE WALL-MOUNTED AT 12'-0" ABOVE FINISH GRADE



**GENERAL FIRE ALARM NOTES**

- IT SHALL BE THE CONTRACTOR'S SOLE RESPONSIBILITY TO PROVIDE A FIRE ALARM SYSTEM THAT IS IN FULL COMPLIANCE WITH THE WEST VIRGINIA STATE FIRE CODE.
- REFER TO ARCHITECTURAL DRAWINGS FOR EXACT LOCATION AND QUANTITY OF EXTERIOR DOORS. ALL EXTERIOR DOORS SHALL HAVE A PULL STATION MOUNTED ADJACENT TO THE DOOR.
- REFER TO PLUMBING DRAWINGS FOR EXACT LOCATION AND QUANTITY OF SPRINKLER FLOW SWITCHES AND VALVE TAMPER SWITCHES. EACH SPRINKLER ZONE SHALL BE SEPARATELY ANNUNCIATED AT THE FIRE ALARM PANEL AND THE ANNUNCIATOR.
- REFER TO HVAC DRAWINGS FOR EXACT LOCATION AND QUANTITY OF AIR HANDLING UNITS > 2000 CFM AND < 15,000 CFM. PROVIDE A DUCT SMOKE DETECTOR IN THE RETURN AIR DUCT OF EACH UNIT > 2000 CFM AND < 15,000 CFM. EACH AIR HANDLER DUCT SMOKE DETECTOR SHALL BE SEPARATELY ANNUNCIATED BY THE FIRE ALARM PANEL AND THE ANNUNCIATOR. PROVIDE REMOTE LED INDICATOR AT CEILING BELOW EACH DETECTOR.
- REFER TO ELECTRICAL DRAWINGS FOR EXACT LOCATION AND QUANTITY OF ELECTRICAL PANELS. PROVIDE A SMOKE DETECTOR AT EACH LOCATION.
- REFER TO REFLECTED CEILING PLAN AND HVAC PLANS FOR COORDINATION OF CEILING SMOKE DETECTORS.
- CONNECT EACH KITCHEN HOOD EXTINGUISHING SYSTEM TO SEPARATE FIRE ALARM ZONE. CONNECT COOKING EQUIPMENT GAS SOLENOIDS AND SHUNT TRIP BREAKERS TO FIRE ALARM SYSTEM.
- CEILING MOUNTED SMOKE DETECTORS SHALL BE LOCATED A MINIMUM OF 36" FROM PERIMETER OF SUPPLY DIFFUSERS OR RETURN AIR OPENINGS.
- SUPPLY 120 VOLT CONNECTION AS REQUIRED AT ALL SYSTEMS EQUIPMENT.
- PROVIDE A COMPLETE ELEVATOR RECALL SYSTEM IN ACCORDANCE WITH ASME A17.1 AND THE WEST VIRGINIA STATE FIRE CODE.
- STROBE LOCATIONS SHOWN ON DRAWINGS IS FOR ILLUSTRATION ONLY. FIELD VERIFY EXACT MOUNTING LOCATION.

**GENERAL FLOOR SLEEVE NOTE:**  
CONTRACTOR IS TO PROVIDE THREE (3) 2 INCH SLEEVES THROUGH FLOOR BETWEEN FIRST AND SECOND FLOOR LEVELS FOR FUTURE CONDUITS AND CABLING. LOCATE SLEEVES AS DIRECTED BY ARCHITECT OR OWNER.

**FIRST FLOOR POWER PLAN**  
SCALE: 1/8" = 1'-0"

**PLAN NOTES:**

- EXTEND 1" EMPTY CONDUIT W/PULLWIRE FROM BOX TO ABOVE ACCESSIBLE CEILING.
- COORDINATE EXACT LOCATIONS OF POWER AND DATA BOXES WITH FURNISHINGS CONTRACTOR PRIOR TO ROUGH-IN.
- TRANSFORMER AND SAFETY SWITCH FOR LIFT STATION CONTROL PANEL. SEE PLAN NOTES "T" AND "V" ON DWG. ED-7.
- VERIFY EXACT LOCATION OF FLOOR OUTLETS W/OWNER FOR COPIER PRIOR TO ROUGH-IN. OUTLETS SHALL BE FLUSH W/FLOOR, W/BRASS FACE PLATE.
- 3P/80 AMP FUSED SWITCH IN NEMA-3R ENCLOSURE. FUSES SHALL BE AS RECOMMENDED BY EQUIPMENT MANUFACTURER.
- 3P/30 AMP FUSED SAFETY SWITCH IN NEMA-3R ENCLOSURE. FUSES SHALL BE AS RECOMMENDED BY EQUIPMENT MANUFACTURER.
- POWER POLE SHALL BE WIREMOLD #30TP4V SERIES. POLE SHALL COME W/POWER AND DATA FEED OPENINGS. VERIFY EXACT CONFIGURATION OF POLE W/OWNER PRIOR TO ORDERING. POWER POLE SHALL COME W/ALL NECESSARY MOUNTING ACCESSORIES.
- 2P/30A FUSED SWITCH IN NEMA-3R ENCLOSURE. FUSES SHALL BE AS RECOMMENDED BY EQUIPMENT MANUFACTURER.
- ALL WORK ASSOCIATED WITH THE ELEVATOR MUST BE IN ACCORDANCE WITH THE ELEVATOR CODE AND THE WV STATE FIRE MARSHAL.
- COORDINATE MOUNTING HEIGHT WITH CASEWORK.
- LIFT STATION CONTROL PANEL BY SRC CONTRACTOR. POWER CONNECTION AND CONDUIT FOR FUTURE ALARM CABLING BY HQ CONTRACTOR. SEE PLAN NOTES "W", "X" AND "Y" ON DWG. ED-7.
- PROVIDE CONDUIT FOR CABLE TELEVISION SERVICE. SEE SITE UTILITY DRAWING "SU-1" FOR DETAILS.
- SEE ELECTRICAL RISER DIAGRAM ON DRAWING ED-7 AND SITE UTILITY PLAN ON DWG. "SU-1" EXTEND CABLES AND CONDUITS AS SHOWN FROM EMERGENCY ENGINE/GENERATOR SET AND TRANSFER SWITCH TO EQUIPMENT IN ROOM #123 AS SHOWN.
- HVAC UNIT "0-CU-8" SUPPLIES POWER TO HVAC UNIT "0-DU-2". COORDINATE WITH EQUIPMENT SUPPLIER AND MECHANICAL CONTRACTOR FOR ALL REQUIREMENTS AND DETAILS.
- HVAC UNIT "0-CU-10" SUPPLIES POWER TO HVAC UNIT "0-DU-1". COORDINATE WITH EQUIPMENT SUPPLIER AND MECHANICAL CONTRACTOR FOR ALL REQUIREMENTS AND DETAILS. SEE PLAN NOTE #1 ON DWG. "0-6".
- PLUMBING CONTRACTOR IS TO SUPPLY TRANSFORMER FOR AUTOMATIC FLUSH VALVES AND FAUCET VALVES. ELECTRICAL CONTRACTOR IS TO RECEIVE TRANSFORMER AND INSTALL ABOVE ACCESSIBLE CEILING WITH ALL WIRING AND CONNECTIONS. THERE IS TO BE NO EXPOSED WIRING. SEE DETAIL IN DRAWING ED-6. ONE TRANSFORMER CAN OPERATE UP TO EIGHT (8) DEVICES. CIRCUIT AS SHOWN.
- PROVIDE HANDHOLE AND CIRCUIT FOR TEMPORARY RAMP LIGHTING. COORDINATE WITH SRC CONTRACTOR FOR LOCATION AND DETAILS. CONNECT TO CIRCUIT #01A-47.
- PROVIDE CONDUITS FOR TELECOMMUNICATION SERVICES BETWEEN HQ AND SRC BUILDINGS. SEE SITE UTILITY DRAWING "SU-1" AND TELEPHONE/DATA RISER ON THIS DRAWING FOR DETAILS.
- PROVIDE ELECTRICAL POWER CONNECTION FOR POWER MIDDLE AND CIRCUIT AS SHOWN. SEE MECHANICAL DRAWINGS FOR DETAILS.

		Clingenpeel/McBroyer & Assoc., Inc. 824 CROSS LANES DRIVE CHARLESTON, WV 25313 PHONE: (304) 343-0318 5 MIDDLE COURT MORFANTOWN, WV 26506 PHONE: (304) 698-2558	COLORIZED	2009/2012	REVISED
			DISTRICT 1 HEADQUARTERS COMPLEX CHARLESTON WEST VIRGINIA FIRST FLOOR POWER PLAN SCALE: 1/8"=1'-0"	E. T. BOGCESS, ARCHITECT, INC. PRINCETON WEST VIRGINIA DATE: 10/17/12 PROJECT NO: 1104 CADD FILE: 1104-AP1 SHEET NO: EO-4	