



State of West Virginia
 Department of Administration
 Purchasing Division
 2019 Washington Street East
 Post Office Box 50130
 Charleston, WV 25305-0130

Solicitation

NUMBER
631400005

PAGE
1

ADDRESS CORRESPONDENCE TO ATTENTION OF:
CRYSTAL RINK 304-558-2306

RFQ COPY
 TYPE NAME/ADDRESS HERE

VENDOR

SHIP TO

DIVISION OF HIGHWAYS
 CHIEF OF INFORMATION SYSTEMS
 BUILDING 5
 1900 KANAWHA BOULEVARD, EAST
 CHARLESTON, WV
 25305-0430 304-558-0408

DATE PRINTED
12/11/2013

BID OPENING DATE: 12/18/2013 BID OPENING TIME 1:30PM

LINE	QUANTITY	UOP	CAT NO	ITEM NUMBER	UNIT PRICE	AMOUNT
ADDENDUM NO. 01						
THIS ADDENDUM HAS BEEN ISSUED TO MODIFY THE ORIGINAL SOLICITATION PER THE ATTACHED DOCUMENTATION.						
0001	1	EA	906-20	CABLE TELECOMMUNICATIONS DISTRIBUTION SYSTEM		
***** THIS IS THE END OF RFQ 631400005 ***** TOTAL:						

SIGNATURE		TELEPHONE	DATE
TITLE	FEIN	ADDRESS CHANGES TO BE NOTED ABOVE	

WHEN RESPONDING TO SOLICITATION, INSERT NAME AND ADDRESS IN SPACE ABOVE LABELED 'VENDOR'

SOLICITATION NUMBER: 631400005

Addendum Number: 1

The purpose of this addendum is to modify the solicitation identified as (“Solicitation”) to reflect the change(s) identified and described below.

Applicable Addendum Category:

- | Modify bid opening date and time
- | Modify specifications of product or service being sought
- | Attachment of vendor questions and responses
- | Attachment of pre-bid sign-in sheet
- | Correction of error
- | Other

Description of Modification to Solicitation:

To provide the answers to vendor technical questions

To provide the pre-bid meeting sign-in sheet

Additional Documentation: Documentation related to this Addendum (if any) has been included herewith as Attachment A and is specifically incorporated herein by reference.

Terms and Conditions:

1. All provisions of the Solicitation and other addenda not modified herein shall remain in full force and effect.
2. Vendor should acknowledge receipt of all addenda issued for this Solicitation by completing an Addendum Acknowledgment, a copy of which is included herewith. Failure to acknowledge addenda may result in bid disqualification. The addendum acknowledgement should be submitted with the bid to expedite document processing.

ATTACHMENT A

RFQ# 631400005:
DOT answers to the submitted questions

Questions for Bid #'s 631400005

1.) **3.1.3 Are You currently utilizing the software in ImVision?**

3.1.3 The Structured Infrastructure Cable Telecommunications Distribution System must be compatible with the existing DOT CommScope iPatch / ImVision system.

DOT has purchased the ImVision (iPatch) software; it is currently installed on a DOT server and is in an implementation period.

2.) **3.1.4 The specification consists of Chatsworth, CommScope, SPI, Geist, Hager, Tripp-Lite and so on. This would not be a single manufacturer.**

Can you please explain in further detail what you mean by this statement?

3.1.4 All copper cable and fiber as well as all termination and installation material used must be from a single manufacture and provide a 15 year warranty.

This requirement refers to the copper and fiber materials only. This would include (not limited to) cable, patch panels, outlets, faceplate, surface mount boxes, fiber jumpers, copper patch cables, and other material as required by the manufacture to meet their requirements to issue the 15 year warranty.

3.) **Can the bid opening be delayed one week?**

No. At this point DOT does not see a reason to delay the bid opening.

Technical Questions for State of WV RFQ# 631400005 (District 1 Cabling)

- 1) It is my understanding that this project is a Prevailing Wage (Davis-Bacon Act) project. Is this correct?

Yes. It is a WV State construction project and by law requires prevailing wages to be paid.

- 2) It was discussed in the Pre-bid meeting on 12/3/13 that the State desires that the Vendor have an RCDD on staff as well as current SYSTIMAX Certification. Is this a requirement of the RFQ?

The Vendor must have a **BICSI RCDD®** (*Registered Communications Distribution Designer*) on staff that will be ultimately responsible for this project. The RCDD must have experience in the installation of **structured cabling telecommunications distribution systems** the size and scope as the one specified in this project. A list of the **structured cabling telecommunications distribution systems** that includes at minimum fiber connectivity between four buildings in a campus environment with 100 horizontal cabling runs in two separate buildings must be provided to display the ability of the RCDD to oversee this project. Should the RCDD assigned to this project change during the installation, the new RCDD assigned must meet all requirements of the RFQ.

The Vendor must have **CommScope, Siemon and BICSI Registered Installers and Technicians or equal** on staff and assign them to this project. The project shall be staffed at all times by certified Installers and Technicians

The vendor must provide a telecommunications technician with experience cross connecting fiber cabling, analog, and digital systems in a multi-building campus environment. A list of previous projects shall be available upon request.

The vendor must also provide a project clerk for up to 10 hours weekly as deemed necessary by The State and /or The Vendor.

STATE DIST. NO.	STATE PROJECT OR HIGHWAY NO.	FEDERAL PROJECT NUMBER	FISCAL YEAR	COUNTY	SHEET NO.	TOTAL SHEETS
WV	0020-100/6-07		2013	KAHAWHA	98	108

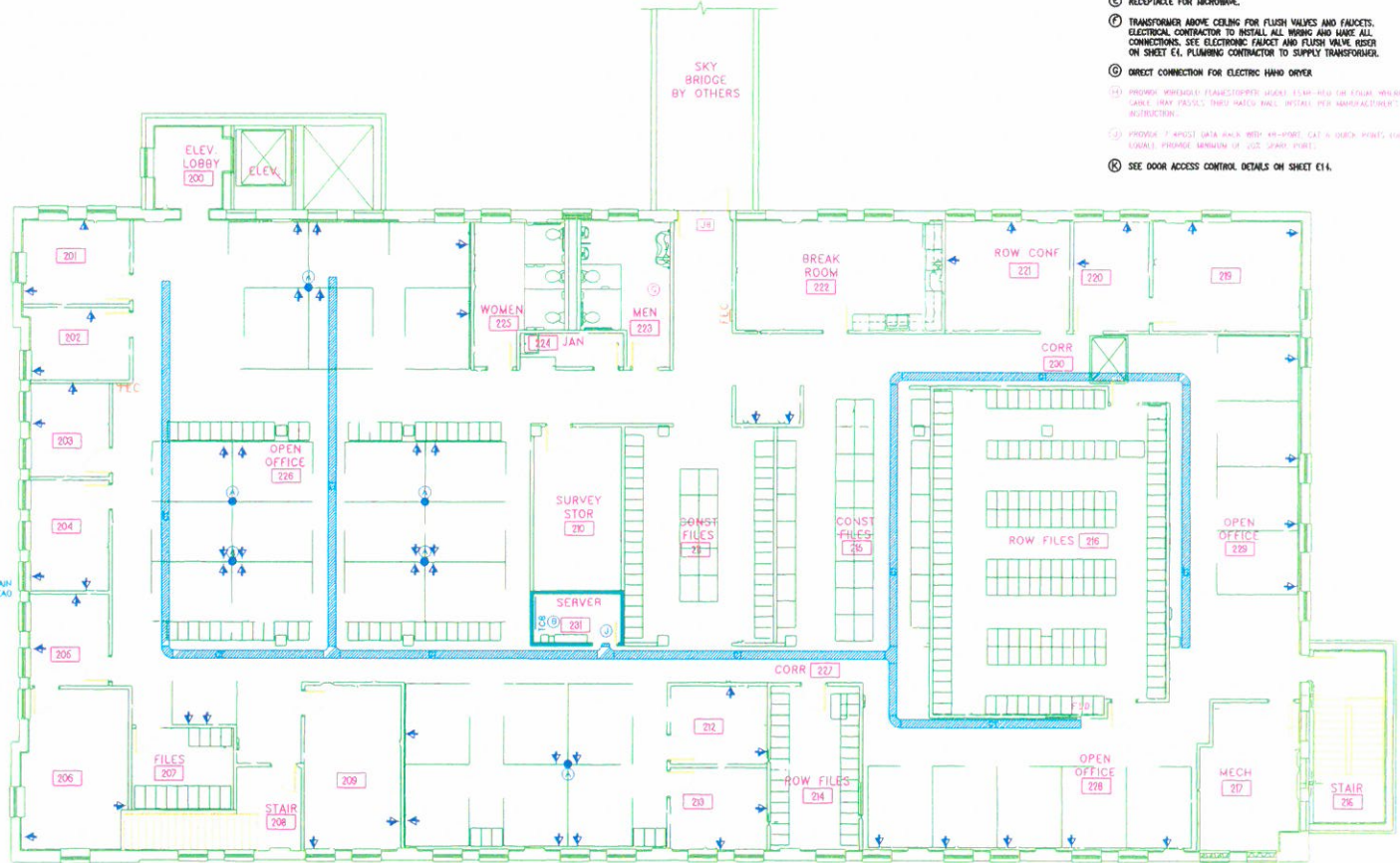
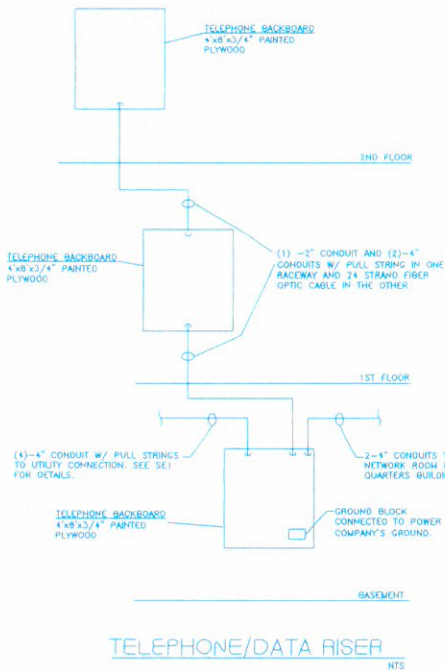
ELECTRICAL DEMO NOTES

1. ELECTRICAL CONTRACTOR SHALL DISCONNECT AND REMOVE ALL ELECTRICAL WORK NOT INDICATED TO REMAIN. THIS INCLUDES BUT NOT LIMITED TO LIGHTING FIXTURES, RECEPTACLES, PANEL BOARDS, CONDUIT, JUNCTION BOXES AND WIRING. CONTRACTOR SHALL COORDINATE WITH ARCHITECTURAL DRAWINGS AND VISIT THE SITE PRIOR TO BIDDING. DETERMINE EXISTING CONDITIONS, EXTENT OF REMOVAL WORK AND MAKE ALLOWANCE FOR SUCH WORK.

NOTES:
 1. CABLE TRAY SHALL BE MINIMUM OF 12"x6"
 2. RECEPTACLES IN EXISTING WALLS SHALL USE SHALLOW OUTLET BOXES.

- PLAN NOTES:**
- (A) PROVIDE TELE-PHONIC PULL SYSTEM (MINIMUM 100'x4" OR EQUAL) FROM EXISTING WALL TO CEILING.
 - (B) SEE TELEPHONE/DATA RISER ON THIS SHEET
 - (C) RANGE HOOD.
 - (D) RECEPTACLE FOR RANGE.
 - (E) RECEPTACLE FOR MICROBOWE.
 - (F) TRANSFORMER ABOVE CEILING FOR FLUSH VALVES AND FAUCETS. ELECTRICAL CONTRACTOR TO INSTALL ALL WIRING AND MAKE ALL CONNECTIONS. SEE ELECTRICAL FAUCET AND FLUSH VALVE RISER ON SHEET E1. PLUMBING CONTRACTOR TO SUPPLY TRANSFORMER.
 - (G) DIRECT CONNECTION FOR ELECTRIC HAND DRYER
 - (H) PROVIDE WIRING FOR FLOORSCOPED AREAS TO BE USED ON EXISTING WIRING. CABLE TRAY TRAYS SHALL BE INSTALLED PER MANUFACTURER'S INSTRUCTIONS.
 - (I) PROVIDE 7 AMPERE DATA RACK WITH 48-PORE CAT 6 (OR BETTER) AND EQUALLY PROVIDE MINIMUM OF 200' LEAD-IN PAPER.
 - (K) SEE DOOR ACCESS CONTROL DETAILS ON SHEET E1.

DISTRICT 1 HQ



DOT-DOH-District 1
 HQ SRC Building
 SECOND FLOOR POWER PLAN
 SCALE: 1/8"=1'-0"

61 - Drop Locations
 122 - Cable Runs

Designed By: JEH
 Drawn By: STAFF
 Scale: AS NOTED

Checked By: JEH
 Job No. 12007
 Date: SEPTEMBER 2012

Cnboman Technical Group
 1000 1st Street - 10th Floor - Lincoln, NE 68502
 Phone: 402-478-1111
 Fax: 402-478-1112
 Website: www.cnboman.com

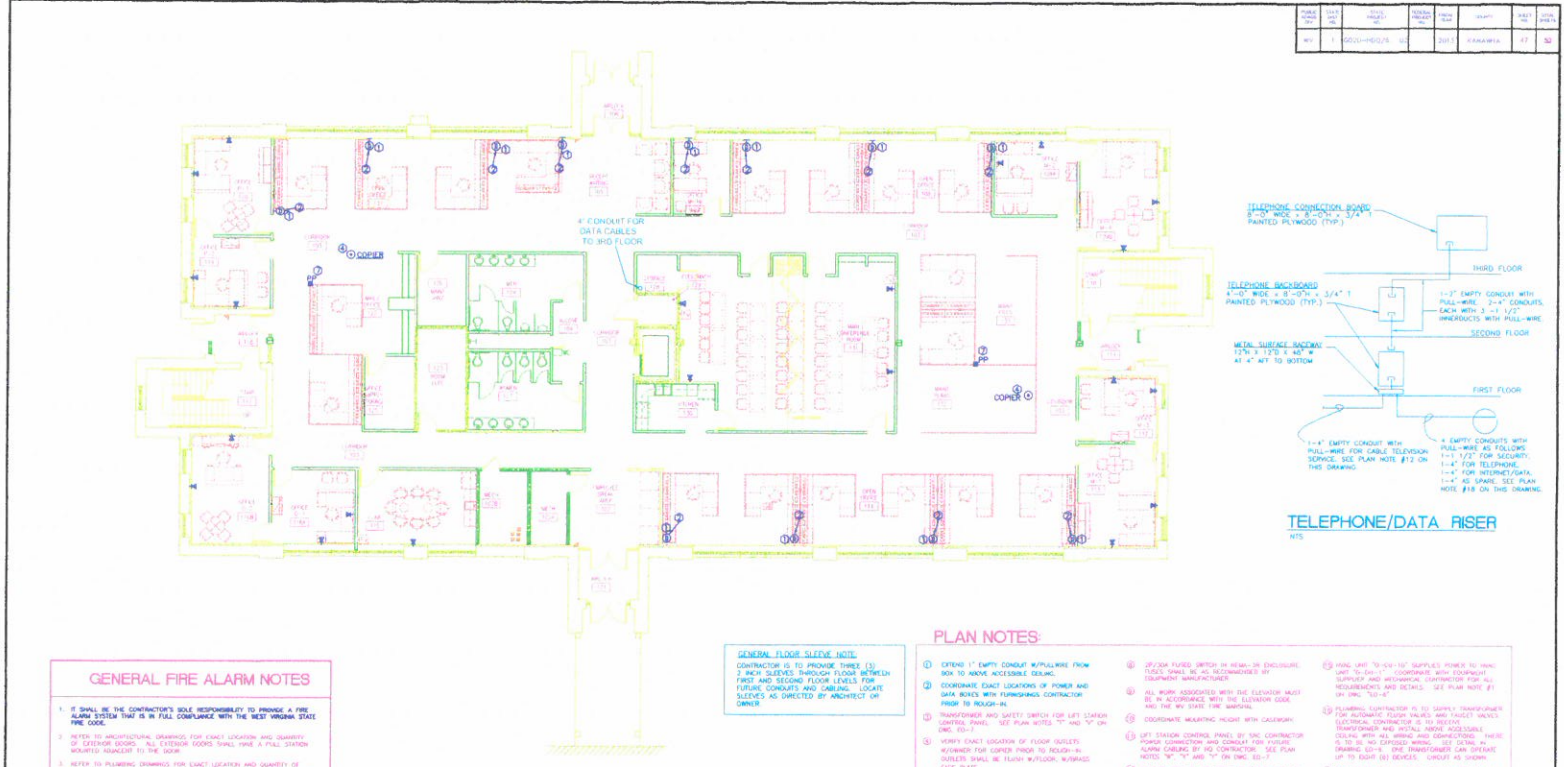
NO.	REVISIONS	DATE	BY

WEST VIRGINIA DEPARTMENT OF TRANSPORTATION
 DIVISION OF HIGHWAYS
 SRC BUILDING RENOVATIONS
 STATE PROJECT TBD

SECOND FLOOR POWER PLAN
 SHEET NO. EG

DOT-DOH-District 1 HQ Building FIRST FLOOR

SYMBOL LEGEND	
SYMBOL	DESCRIPTION
	FLUORESCENT LIGHT FIXTURE, LETTER DENOTES TYPE
	STRIP OR INDUSTRIAL FLUORESCENT LIGHTING FIXTURE
	FLUORESCENT LIGHTING FIXTURE W/EMERG. BATTERY PACK
	WALL MTD. LIGHT FIXTURE
	EXIT LIGHT, SHADED SIDE DENOTES FACE
	WALL MOUNTED EXIT LIGHT
	COMPACT FLUORESCENT OR HTD LIGHTING FIXTURE
	EMERGENCY LIGHT SET
	SINGLE POLE SNAP SWITCH
	THREE-WAY SNAP SWITCH
	FOUR-WAY SNAP SWITCH
	MANUAL MOTOR STARTER W/THERMAL OVERLOAD
	MANUAL MOTOR STARTER
	DUAL SWITCHING
	COMBINATION TELEPHONE/DATA OUTLET, SINGLE GANG BOX W/ FLUSH BLANK COVER PLATE, EXTEND 3/4" EMPTY CONDUIT W/PULL-WIRE FROM BOX TO ABOVE ACCESSIBLE CEILING
	QUADRUPLEX CONVENIENCE OUTLET
	DUPLEX CONVENIENCE OUTLET
	MOTOR CONNECT
	JUNCTION BOX
	ELECTRIC WATER COOLER
	GROUND FAULT CIRCUIT INTERRUPTER
	ELECTRICAL PANEL FOR CABLE SYSTEM
	MOTOR OPERATED DAMPER
	WEATHERPROOF
	ELECTRICAL PANELBOARD
	COMBINATION STARTER/FUSED DISCONNECT
	MECHANICAL EQUIPMENT DESIGNATION NOTATION
	FUSED SAFETY SWITCH (NF - NON-FUSED)
	PLAN NOTE
	SINGLE GANG OUTLET BOX FOR TELEPHONE/DATA WIRING
	POWER MODULE FOR MVV OUTPOSTS



GENERAL FIRE ALARM NOTES

- IT SHALL BE THE CONTRACTOR'S SOLE RESPONSIBILITY TO PROVIDE A FIRE ALARM SYSTEM THAT IS IN FULL COMPLIANCE WITH THE WEST VIRGINIA STATE FIRE CODE.
- REFER TO ARCHITECTURAL DRAWINGS FOR EXACT LOCATION AND QUANTITY OF EXTERIOR ESCAPE. ALL EXTERIOR ESCAPE SHALL HAVE A FULL STATION MOUNTED ADJACENT TO THE DOOR.
- REFER TO PLUMBING DRAWINGS FOR EXACT LOCATION AND QUANTITY OF SPRINKLER TOWER DRINKERS AND WALL TANKS/STATIONS. EACH SPRINKLER TOWER SHALL BE GENERALLY MOUNTED AT THE FIRE ALARM PANEL AND THE MANIFOLDING.
- REFER TO THESE DRAWINGS FOR EXACT LOCATION AND QUANTITY OF ALL MONITORING DEVICES IN 2000 SQ FT AREA. (ELEVATOR SHAFT, STAIRS, A GATE) SHOWN DETECTOR IN THE VESTIBULE SIZE OF EACH PANEL. 2000 SQ FT AREA IN 2000 SQ FT AREA. EACH MONITORING DEVICE DETECTOR SHALL BE IDENTIFIED AND MOUNTED BY THE FIRE ALARM PANEL AND THE MANIFOLDING. PROVIDE WEAR/LED INDICATOR AT CEILING BELOW EACH DETECTOR.
- REFER TO ELECTRICAL DRAWINGS FOR EXACT LOCATION AND QUANTITY OF ELECTRICAL PANELS. PROVIDE A SMOKE DETECTOR AT EACH LOCATION.
- REFER TO BELIEVED CEILING PLAN AND WIRE PANEL FOR CONNECTIONS OF CEILING TARGET DETECTORS.
- CONNECT EACH MONITORING DEVICE (ELECTRICAL SYSTEM) TO SEPARATE FIRE ALARM ZONE. CONNECT SOUNDING EQUIPMENT FOR CEILING AND SOUND TRIP SIGNALING TO THE ALARM SYSTEM.
- CEILING MOUNTED SMOKE DETECTOR SHALL BE LOCATED A MINIMUM OF 30\"/>

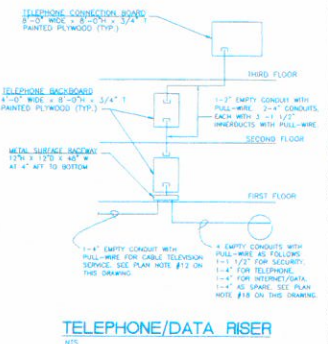
FIRST FLOOR POWER PLAN
SCALE: 1/8" = 1'-0"

GENERAL FLOOR SLEEVE NOTE

CONTRACTOR IS TO PROVIDE THREE (3) 2 INCH SLEEVES THROUGH FLOOR BETWEEN FIRST AND SECOND FLOOR LEVELS FOR FUTURE CONDUITS AND CABLES. LOCATE SLEEVES AS DIRECTED BY ARCHITECT OR OWNER.

PLAN NOTES

- EXTEND 1" EMPTY CONDUIT WITH/OUT FROM BOX TO ABOVE ACCESSIBLE CEILING.
- COORDINATE EXACT LOCATIONS OF POWER AND DATA RACKS WITH FURNISHING CONTRACTOR PRIOR TO INSTALL.
- TRANSFORMER AND SAFETY SWITCH FOR LEFT STATION CONTROL PANEL. SEE PLAN NOTES "1" AND "2" ON SHEET.
- VERIFY EXACT LOCATION OF FLOOR JOIST/RAFTER FOR CABLE PRIOR TO FOLLOW-IN. RACKS SHALL BE FLOOR W/FLUSH MOUNTED FACE PLATE.
- REFER TO THESE DRAWINGS FOR EXACT LOCATION AND QUANTITY OF ALL MONITORING DEVICES IN 2000 SQ FT AREA. (ELEVATOR SHAFT, STAIRS, A GATE) SHOWN DETECTOR IN THE VESTIBULE SIZE OF EACH PANEL. 2000 SQ FT AREA IN 2000 SQ FT AREA. EACH MONITORING DEVICE DETECTOR SHALL BE IDENTIFIED AND MOUNTED BY THE FIRE ALARM PANEL AND THE MANIFOLDING. PROVIDE WEAR/LED INDICATOR AT CEILING BELOW EACH DETECTOR.
- REFER TO ELECTRICAL DRAWINGS FOR EXACT LOCATION AND QUANTITY OF ELECTRICAL PANELS. PROVIDE A SMOKE DETECTOR AT EACH LOCATION.
- REFER TO BELIEVED CEILING PLAN AND WIRE PANEL FOR CONNECTIONS OF CEILING TARGET DETECTORS.
- CONNECT EACH MONITORING DEVICE (ELECTRICAL SYSTEM) TO SEPARATE FIRE ALARM ZONE. CONNECT SOUNDING EQUIPMENT FOR CEILING AND SOUND TRIP SIGNALING TO THE ALARM SYSTEM.
- CEILING MOUNTED SMOKE DETECTOR SHALL BE LOCATED A MINIMUM OF 30\"/>



		Cingone/Wickroy & Assoc., Inc. 624 CHERRY LANE DRIVE CHARLESTON, WV 25303 PHONE: (304) 343-0319	COLORIZED	REVISIONS	DATE	DISTRICT 1 HEADQUARTERS COMPLEX CHARLESTON WEST VIRGINIA	
						FIRST FLOOR POWER PLAN	

STATE DIST.	STATE PROJECT NUMBER	FEDERAL PROJECT NUMBER	FISCAL YEAR	COUNTY	SHEET NO.	TOTAL SHEETS
WV	6020 HQ-2 S-07	-	2013	KANAWHA	97	108

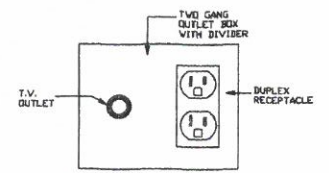
ELECTRICAL DEMO NOTES

1. ELECTRICAL CONTRACTOR SHALL DISCONNECT AND REMOVE ALL ELECTRICAL WORK NOT INDICATED TO REMAIN. THIS INCLUDES BUT NOT LIMITED TO LIGHTING FIXTURES, RECEPTACLES, PANEL, BRANDED CONDUIT, JUNCTION BOXES AND WIRING. CONTRACTOR SHALL COORDINATE WITH ARCHITECTURAL DRAWINGS AND VISIT THE SITE PRIOR TO BEGIND. DETERMINE EXISTING CONDITIONS, EXTENT OF REMOVAL WORK AND MAKE ALLOWANCE FOR SUCH WORK.

NOTES:
 1. CABLE TRAY SHALL BE MINIMUM OF 12"x6".
 2. RECEPTACLES IN EXISTING WALLS SHALL USE SHALLOW OUTLET BOXES.

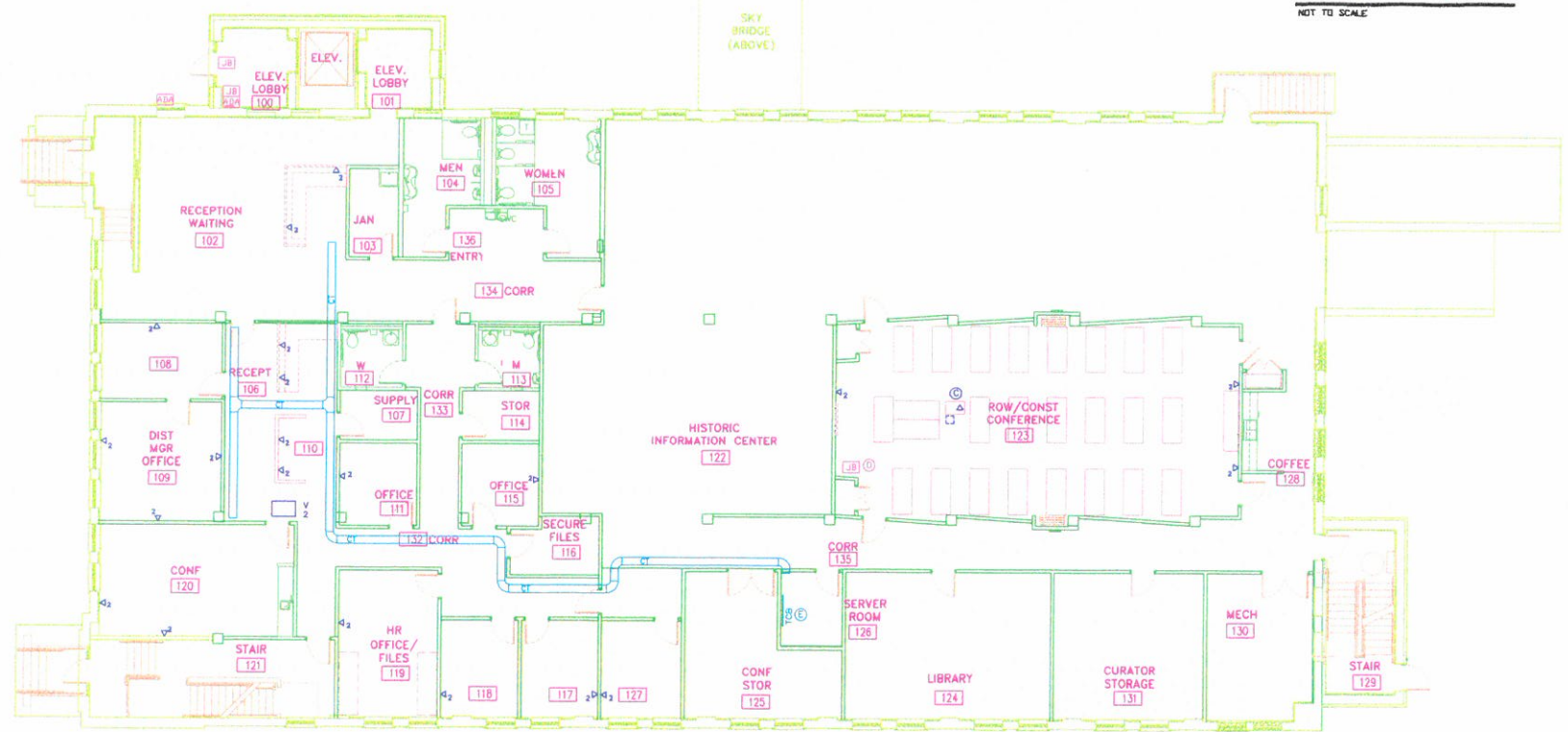
PLAN NOTES

- Ⓐ PROVIDE 277V, 40A OUTLET, CORD AND PLUG FOR INSTANTANEOUS WATER HEATER.
- Ⓑ SEE DOOR ACCESS CONTROL DETAILS ON SHEET E14.
- Ⓒ PROVIDE POWER AND DATA OUTLETS IN CEILING FOR CEILING MOUNTED PROJECTOR.
- Ⓓ PROVIDE 4"x4" JUNCTION BOX WITH 1" CONDUIT TO ABOVE CEILING FOR SIGNAL CABLE TO CEILING MOUNTED PROJECTOR.
- Ⓔ SEE TELEPHONE/DATA RISER ON SHEET E4.
- Ⓕ SEE TV OUTLET DETAIL THIS SHEET.
- Ⓖ SEE WATER HEATING DETAIL ON SHEET P3.
- Ⓗ RECEPTACLE FOR UNDER COUNTER MICRO FREEZER.
- Ⓙ RECEPTACLE FOR MICROWAVE.
- Ⓚ TRANSFORMER ABOVE CEILING FOR FLUSH VALVES AND FAUCETS. ELECTRICAL CONTRACTOR TO INSTALL ALL WIRING AND MAKE ALL CONNECTIONS. SEE ELECTRONIC FAUCET AND FLUSH VALVE RISER ON SHEET E4. PLUMBING CONTRACTOR TO SUPPLY TRANSFORMER.
- Ⓛ DIRECT CONNECTION FOR ELECTRIC HAND DRIVERS.
- Ⓜ CIRCUIT FOR ADA DOOR MOTOR.
- Ⓝ PROVIDE WIRKHOLO FLAMESTOPPER MODEL F54H-RED OR EQUAL WHERE CABLE TRAY PASSES THRU RATED WALL. INSTALL PER MANUFACTURER'S INSTRUCTIONS.
- Ⓟ PROVIDE 7" APERT DATA RACK WITH 48-PORT, CAT 6 QUICK PORTS (OR EQUAL). PROVIDE MINIMUM OF 20X SHAVE PORTS.
- Ⓠ RECEPTACLE FOR ROLLING FILE SYSTEM. COORDINATE REQUIREMENTS WITH MANUFACTURER.
- Ⓡ COORDINATE INSTALLATION WITH DOOR MANUFACTURER.



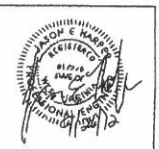
NOTE: COORDINATE EXACT LOCATION OF T.V. OUTLETS WITH OWNER.

TV OUTLET DETAIL
 NOT TO SCALE



DOT-DOH-District 1
 HQ SRC Building
FIRST FLOOR POWER PLAN
 SCALE: 1/8" = 1'-0"

23 - Drop Locations
 46 - Cable Runs



Designed By: JEH Checked By: JEH
 Drawn By: STAFF Job No. 12007
 Scale: AS NOTED Date: SEPTEMBER 2012

Chapman Technical Group
 ENGINEERS • ARCHITECTS • INTERIOR DESIGNERS • LANDSCAPE ARCHITECTS
 P.O. Box 6886, Charleston, West Virginia 25306-6886

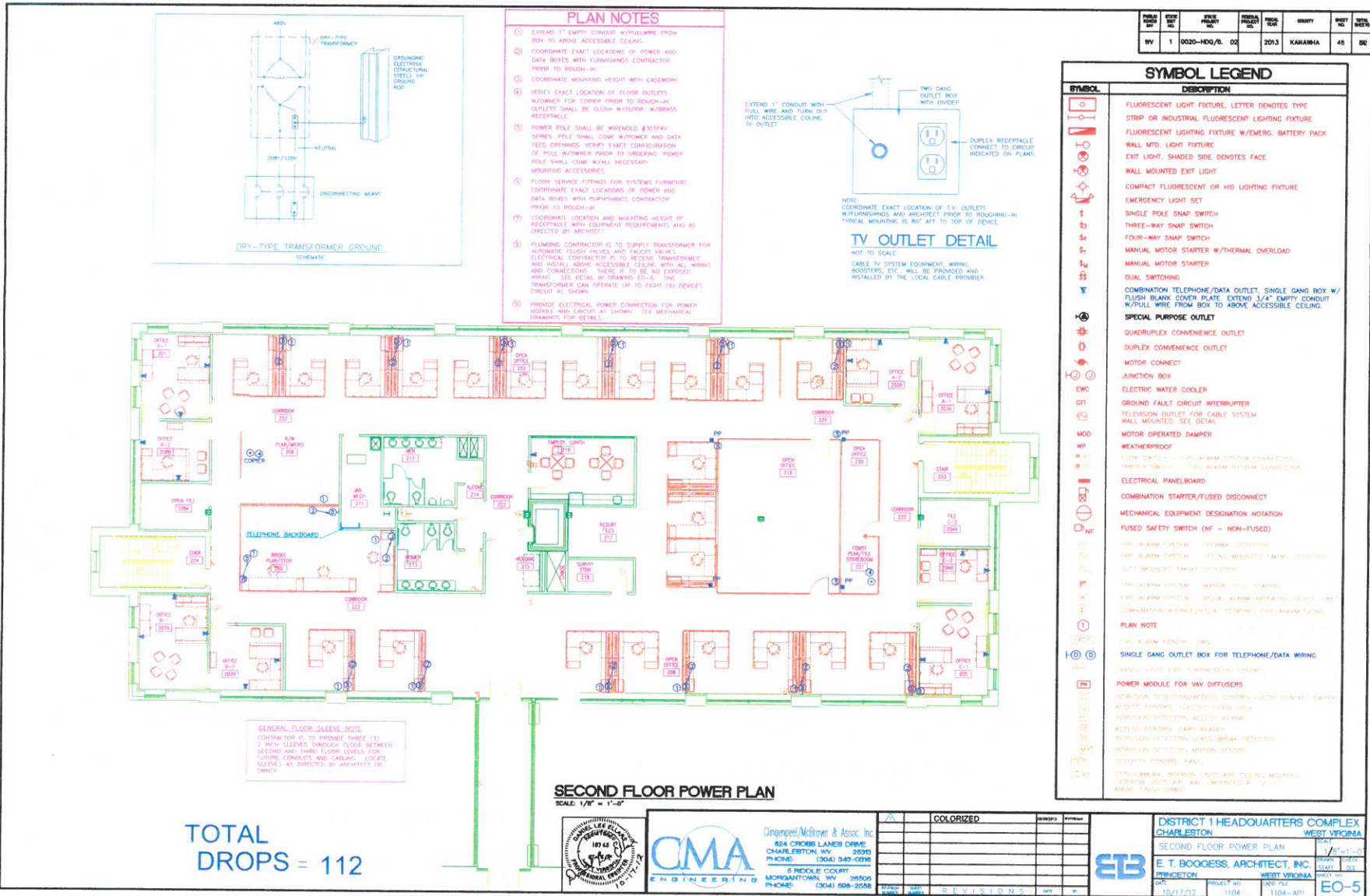
NO.	REVISIONS	DATE	BY

WEST VIRGINIA DEPARTMENT OF TRANSPORTATION
 DIVISION OF HIGHWAYS
 SRC BUILDING RENOVATIONS
 STATE PROJECT TBD

FIRST FLOOR POWER PLAN
 SHEET NO. E5

DOT-DOH-District 1 HQ Building

SECOND FLOOR



TOTAL DROPS = 112

SECOND FLOOR POWER PLAN
SCALE: 1/8" = 1'-0"



CMA ENGINEERING
 Dimpstead/McIntyre & Assoc., Inc.
 824 CROSS LANE DRIVE
 CHARLESTON, WV 25303
 PHONE: (304) 343-4000
 6 RIDGLE COURT
 MORGANTOWN, WV 26505
 PHONE: (304) 608-2008

NO.	DATE	REVISIONS	BY	CHKD

DISTRICT 1 HEADQUARTERS COMPLEX
 CHARLESTON WEST VIRGINIA
 SECOND FLOOR POWER PLAN
 E. T. BOGGS, ARCHITECT, INC.
 CHARLESTON WEST VIRGINIA
 DATE: 10/17/03 PROJECT NO: 1104 ARCH FILE: 1104-AP1
 DRAWN BY: [Signature] CHECKED BY: [Signature] DATE: [Date]
E0-5

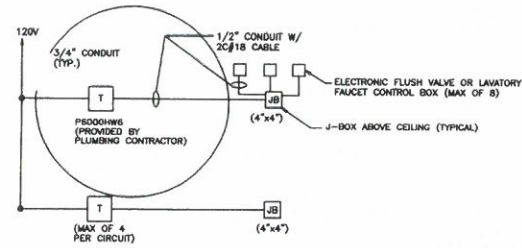
RFQ DOT District 1 HQ and SRC Bldg. (addendum 01)

BID PRICE SHEET

PART NUMBER	DESCRIPTION	UNIT	QUANTITY	UNIT PRICE	EXTENDED PRICE
WV State Department of Transportation - District 1 HQ and SRC Bldg. Charleston, WV					
X-30-422	BRADY IDXPRT Labels Size: 1.500" W x 0.750" H Print Area 250	Cart	3		
XC-475-422	BRADY IDXPRT GLOSS POLYESTER 475IN X 30 CONT	Cart	1		
XC-1000-595-YL-BK	BRADY IDXPRT OUTDOOR VINYL 1.0IN X 30 FT BK on YL	Cart	1		
XC-1000-595-GN-WT	BRADY IDXPRT OUTDOOR VINYL 1.0IN X 30 FT WT on GN	Cart	1		
XC-1000-595-BL-WT	BRADY IDXPRT OUTDOOR VINYL 1.0IN X 30 FT WT on BL	Cart	1		
XSL-115-427	BRADY IDXPRT Labels 1.500" W x .500" H Print Area Self Lam 250	Cart	8		
57014-703	Chatsworth Velocity Standard Pack	Pack	4		
10250-718	Chatsworth Ladder Tray 18" Section 10'	Feet	6		
10595-718	Chatsworth Ladder Tray 18" Top Plate Kit	Each	4		
11421-718	Chatsworth Ladder Tray 18" Wall Angle Support Kit	Each	6		
13912-703	Chatsworth Vertical Wire Manager	Each	2		
CPCSSX2-0ZF005	CommScope 360GS10E MODULAR PATCH CORD 5FT DK BL	Each	500		
CPCSSX2-0ZF007	CommScope 360GS10E MODULAR PATCH CORD 7FT DK BL	Each	250		
CPCSSX2-0ZF010	CommScope 360GS10E MODULAR PATCH CORD 10FT DK BL	Each	250		
760092452	CommScope GigaSPEED XL MGS600 Series Cat 6A U/UTP Info Outlet, 318-blue	Each	500		
760152595	CommScope iPatch 1100GS6 Evolve U/UTP Patch Panel, 48 port	Each	10		
760152587	CommScope iPatch 1100GS6 Evolve U/UTP Patch Panel, 24 port	Each	2		
107952442	CommScope M104 Type Surface Mount Box, four port ivory	Each	300		
108216151	CommScope Faceplate 4-Hole w/blanks Modular Furniture	Each	200		
876540410	CommScope 10G4 ETL Verified Category 6A U/UTP Cable Plenum	Each	100		
760008888	CommScope GigaSPEED® XL 157J Category 6 U/UTP Cable, outdoor, black	Feet	20		
760106880	CommScope TeraSPEED 12 Strand Fiber I/O Plenum Singlemode	Feet	2000		
760103085	CommScope 360 iPatch® G2 LC Fiber Shelf, sliding	Each	2		
760109496	CommScope 360G2 Catridge 12 LC TeraSPEED, Blue w/Pigtails	Each	2		
760039867	CommScope RS-2AF-16SF RoloSplice Kit E/W 2x Fusion Splice Tray 1U Shelf	Each	4		
FDW LCLC42-MXF003	CommScope 3 FOOT - LC/LC Jumper Cable - SM	Each	12		
FDW LCLC42-MXF007	CommScope 7 FOOT - LC/LC Jumper Cable - SM	Each	12		
760072942	CommScope 1U SS Horizontal Trough Kit	Each	6		
760072959	CommScope 2U SS Horizontal Trough Kit	Each	20		
760103796	CommScope M61A-318 BLUE ICON - 100 \ bag	Each	5		
RCURN082	GEIST - 102D20ST5-OD Switched Ultra PDU	Each	2		
RTAFHD3-12	GEIST - Remote Temperature, Humidity, Air Flow, and Dew Point Sensor, 12' cord	Each	2		
GB114420TMGBKT	HAGER 1/4" X 4" X 20" TMGB KIT	Each	1		
GB114212TGBKT	HAGER 1/4" X 2" X 12" TGB KIT	Each	1		
RGBHKIT14119.25	HAGER 1/4" X 1" X 19" RACK MOUNT GROUND BAR KIT	Each	4		
IMSOC1-1	Pelco - Sarix MiniDome 5 Megapixel Fixed Camera	Each	2		
EZDP44S	STI 44+Single Pathway Kit w/ 1 Pathway, Two (2) Mount Plates And Labels	Each	6		
EZRCM44S	STI Radius Control Module - One Pair (2) For Use With Series 44+ Pathway	Each	6		
SU16000RT4U	TRIPP-LITE SMARTONLINE 16 KVA HOT-SWAPPABLE UPS	Each	2		
SNMPWEBCARD	TRIPP-LITE INT SNMP/WEB UPS ADAPTER	Each	2		
PDUMV30HV	TRIPP-LITE 30A VERT MTRD PDU W/L6-30P	Each	2		
P036-006	TRIPP-LITE 6FT AC POWER SPLITTER CABLE	Each	8		
SR4POST	TRIPP-LITE 45U 4-POST SMARTRACK OPEN FRAME RACK	Each	2		
W02-BW2-1BD	TRIPP-LITE Factory Start-Up	Each	2		
Materials Price					0.00
Installation Price					
WV State Department of Administration District 1 HQ and SRC Bldg. Charleston, WV					
Total Bid Price					0.00

<i>Quoted price per hour for labor outside of original Purchase order. Used for award purpose only.</i>	Hour	40		\$0.00
---	------	----	--	--------

STATE DIST. NO.	STATE PROJECT NUMBER	FEDERAL PROJECT NUMBER	FISCAL YEAR	COUNTY	SHEET NO.	TOTAL SHEETS
WV	0020 HDG/ &. 07	-	2013	KANAWHA	96	108

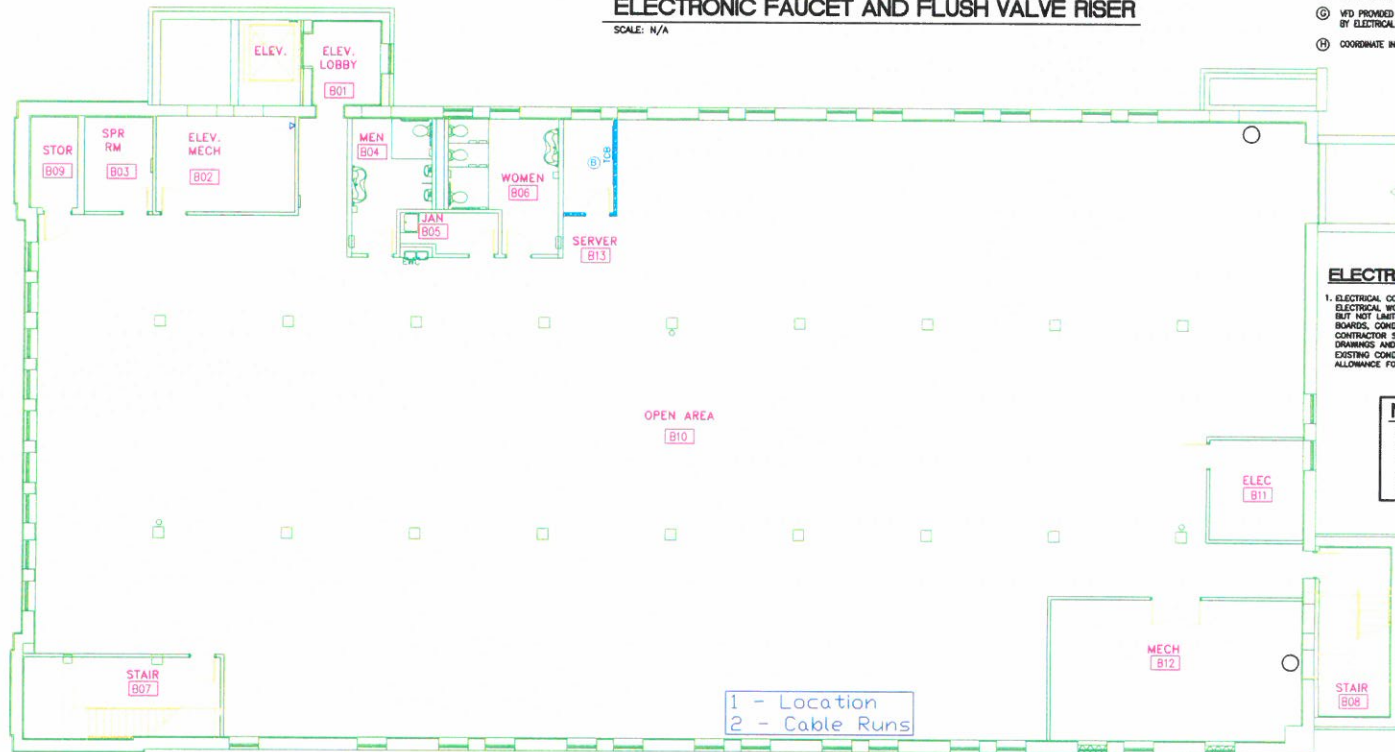


PLAN NOTES:

- (A) SEE FIRE ALARM/ELECTRICAL/SPRINKLER REQUIREMENTS FOR ELEVATOR ON SHEET E14.
- (B) SEE TELEPHONE/DATA RISER ON SHEET E6.
- (C) LEFT STATION CONTROL PANEL. SEE SHEET P5 FOR DETAILS.
- (D) PROVIDE 3P/100A FUSED DISCONNECT SWITCH WITH SHUNT TRIP. COORDINATE FUSE SIZES WITH ELEVATOR EQUIPMENT MANUFACTURER.
- (E) TRANSFORMER ABOVE CEILING FOR FLUSH VALVES AND FAUCETS. ELECTRICAL CONTRACTOR TO INSTALL ALL WIRING AND MAKE ALL CONNECTIONS. SEE ELECTRONIC FAUCET AND FLUSH VALVE RISER THIS SHEET. PLUMBING CONTRACTOR TO SUPPLY TRANSFORMER.
- (F) DIRECT CONNECTION FOR ELECTRIC HAND DRYER.
- (G) W/D PROVIDED BY MECHANICAL CONTRACTOR AND INSTALLED BY ELECTRICAL CONTRACTOR.
- (H) COORDINATE INSTALLATION WITH DOOR MANUFACTURER.

ELECTRONIC FAUCET AND FLUSH VALVE RISER

SCALE: N/A



ELECTRICAL DEMO NOTES

1. ELECTRICAL CONTRACTOR SHALL DISCONNECT AND REMOVE ALL ELECTRICAL WORK NOT INDICATED TO REMAIN. THIS INCLUDES BUT NOT LIMITED TO LIGHTING FIXTURES, RECEPTACLES, PANEL BOARDS, CONDUIT, JUNCTION BOXES AND WIRING. CONTRACTOR SHALL COORDINATE WITH ARCHITECTURAL DRAWINGS AND VISIT THE SITE PRIOR TO BIDDING. DETERMINE EXISTING CONDITIONS, EXTENT OF REMOVAL WORK AND MAKE ALLOWANCE FOR SUCH WORK.

NOTES:

1. ALL CONDUIT ENTERING BUILDING FROM UNDERGROUND SHALL TURN UP INSIDE OF EXTERIOR WALL TO CEILING ABOVE.
2. RECEPTACLES IN EXISTING WALLS SHALL USE SHALLOW OUTLET BOXES.

DOT-DOH-District 1
HQ SRC Building
BASEMENT POWER PLAN
SCALE: 1/8" = 1'-0"



Designed By: JEH Checked By: JEH
 Drawn By: STAFF Job No. 12007
 Scale: AS NOTED Date: SEPTEMBER 2012

Chapman Technical Group
 ENGINEERS • ARCHITECTS • INTERIOR DESIGNERS • LANDSCAPE ARCHITECTS
 P.O. Box 999, P.O. Box 999
 6000 7th Street, Charleston, West Virginia 25304-0999
 (304) 478-0200

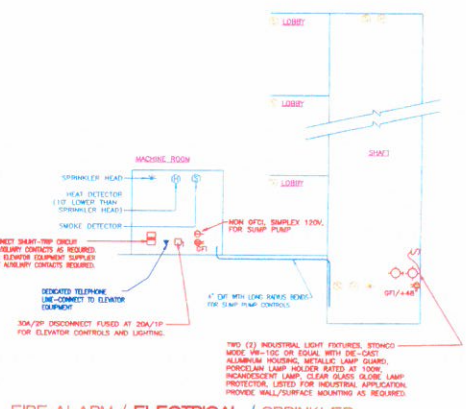
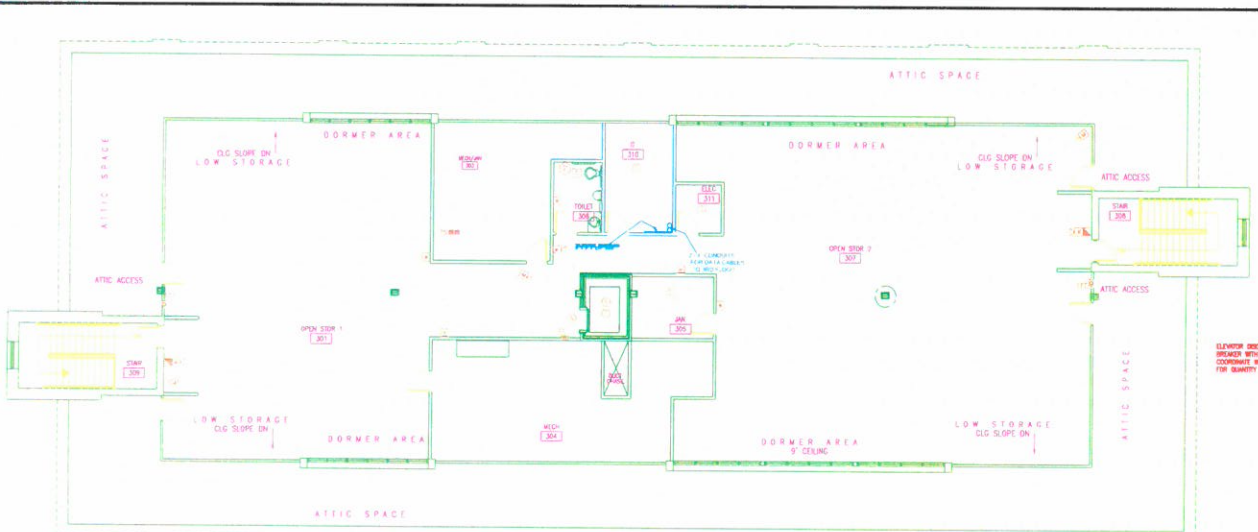
NO.	REVISIONS	DATE	BY

WEST VIRGINIA DEPARTMENT OF TRANSPORTATION
 DIVISION OF HIGHWAYS
 SRC BUILDING RENOVATIONS
 STATE PROJECT TBD

BASEMENT POWER PLAN
 SHEET NO. **E4**

DOT-DOH-District 1 HQ Building THIRD FLOOR FLOOR

PUBLIC PROJECT NO.	START DATE	STATE PROJECT NO.	FEDERAL PROJECT NO.	FISCAL YEAR	COUNTY	SHEET NO.	TOTAL SHEETS
WV 1	2020-HQD/6	05		2013	KANAWHA	115	120



FIRE ALARM / ELECTRICAL / SPRINKLER REQUIREMENTS FOR ELEVATOR

NO SCALE

- NOTES
- ELEVATOR WITH NOTION SHALT-THE ONLY BREAKER WILL RETURN TO DISCONNECT UNDER 100% OF WIRE AND TRUCK IN 100%
 - THIS IS THE ELECTRICAL CONTRACTOR'S RESPONSIBILITY TO FIELD VERIFY ANY EXISTING CORRECT ELECTRICAL REQUIREMENTS INCLUDING BUT NOT LIMITED TO WIRING AND PHASE BEYOND HIS EQUIPMENT IS PROVIDED.

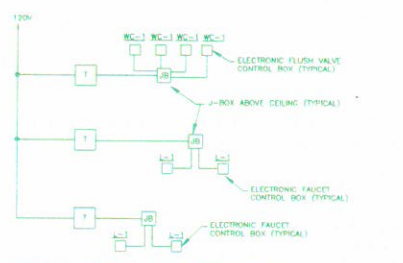
NOTE:
COMBINATION DISCONNECT/STARTERS FOR OAH-1 THRU OAH-4 AND OAH-8 SHALL BE 3P/30A W/NEMA-1 STARTERS

THIRD FLOOR POWER PLAN

SCALE: 1/8" = 1'-0"

PLAN NOTES

- POWER FOR MAIN UNIT TO "E-11" IS SUPPLIED BY MAIN UNIT TO "E-11" - COORDINATE WITH EQUIPMENT SUPPLIER AND MECHANICAL CONTRACTOR FOR ALL REQUIREMENTS AND DETAILS. SEE PLAN NOTE #15 ON SHEET "E-11".
- PLUMBING CONTRACTOR IS TO SUPPLY TRANSFORMER FOR AUTOMATIC FLUSH VALVES AND FAUCETS. ELECTRICAL CONTRACTOR IS TO RECEIVE TRANSFORMER AND INSTALL ACCESSIBLE CEILING WITH ALL WIRING AND CONNECTIONS. THERE IS TO BE NO EXPOSED WIRING. SEE DETAIL THIS DRAWING. ONE TRANSFORMER CAN OPERATE UP TO EIGHT (8) DEVICES. CIRCLES AS SHOWN.



WIRING SCHEMATIC FOR ELECTRONIC FLUSH VALVES AND FAUCETS (TYPICAL)

NO SCALE

GENERAL ELECTRICAL NOTES (NON REFER)

001. VERTICAL LOCATION OF STEIN-MOUNTED LIGHTING FIXTURES, BREAKERS AND OTHER PANELS WITH THE CEILING PARTS AND MECHANICAL EQUIPMENT.
002. LOCATE WALL-MOUNTED LIGHTING FIXTURES DIRECTLY OVER ANY RELATED LANTERN NUMBER OF POWER EQUIPMENT.
003. LOCATE FLOOR MOUNTED LIGHTING FIXTURES, FLOOR MOUNTED AND FLOOR MOUNTED TRANSFORMERS APPROXIMATELY AS INDICATED. LOCATE AS NECESSARY TO COORDINATE WITH THE MECHANICAL CONTRACTOR FOR EQUIPMENT.
004. LOCATE FLOOR MOUNTED LIGHTING FIXTURES THAT TO BE CONCEALED BY THE ASSOCIATED WATER COVER.
005. LOCATE SNAP SWITCHES APPROXIMATELY 4 TO 6 INCHES FROM THE LATCH SIDE OF ANY RELATED COVER FRAME WHERE POSSIBLE. EXCEPT AS INDICATED OTHERWISE.
006. LOCATE SNAP SWITCHES DIRECTLY UNDER INTERRUPTERS WHERE THEY ARE SHOWN IN FLOOR FINISHING (SEE MECHANICAL DRAWINGS).
007. LOCATE WALL MOUNT APPROXIMATELY AS INDICATED. EXCEPT AS INDICATED IN THIS DRAWING TO AVOID INTERFERENCE WITH MECHANICAL EQUIPMENT AND EQUIPMENT.
008. LOCATE ALL WIRING TO BE CONCEALED.
009. MOUNT FLOOR BOXES WITH GROUND STRENGTH OVER WITH THE UNFINISHED SURFACE OF ANY FINISHED FLOOR FRAME WHERE POSSIBLE. EXCEPT AS INDICATED OTHERWISE.
010. MOUNT SINGLE-POLE SWITCHES WITH THE LARGEST DIMENSION VERTICAL EXCEPT AS INDICATED OTHERWISE. MOUNT ALL SWITCH AND FAUCET REAR PANELS.
011. ON ANY WALL MOUNTED SWITCHES TO BANK OR BANKS USE AS A FAUCET SWITCH THREE A MINIMUM OF 3 INCHES EXCEPT AS INDICATED OTHERWISE.
012. LOCATE ALL REWIRING TO AVOID INTERFERENCE WITH EXISTING MECHANICAL EQUIPMENT WITH REMOVAL OF EXISTING DEVICES OR WITH ACCESS TO EQUIPMENT THAT REQUIRES PERIODIC ADJUSTMENT OR MAINTENANCE.
013. USE 1/2" MINIMUM SCHEDULE 40 EQUIPMENT FROM JELLY, BUCKETS OR A FEELING EQUIPMENT NUMBER.
014. BRANCH CIRCUIT AND FEEDER NUMBERS ARE GENERALLY INDICATED BY NUMBER INFORMATION ONLY.
015. VERTICAL FEEDER NUMBER WITH NO MORE THAN 3 CIRCULAR MILLIMETER CONDUCTORS PLUS A FEELING CONDUCTOR PLUS A GROUND CONDUCTOR.
016. INDICATED BRANCH CIRCUIT CONDUCTOR SIZES ARE BASED ON NO MORE THAN 3 CIRCULAR MILLIMETER CONDUCTORS AND NO MORE THAN ONE FEELING CONDUCTOR IN EACH RACEWAY. WHERE THE NUMBER OF CONDUCTORS EXCEEDS THIS RACEWAY CONDUCTOR SIZE IS SHOWN AS NECESSARY TO ACCORD TO THE NATIONAL ELECTRICAL CODE IN ACCORDANCE WITH THE NATIONAL ELECTRICAL CODE.
017. FOR EACH INDICATED CONNECTION PROVIDE AN OUTLET BOX AND FLEXIBLE CONDUIT AS APPROPRIATE FOR THE ASSOCIATED EQUIPMENT. WHERE THE EQUIPMENT INCLUDES A GROUND AND PLUS, PROVIDE A COORDINATE RECEPTACLE WHERE REQUIRED BY CODE. PROVIDE AN ADJUTANT SAFETY DISCONNECT SWITCH.
018. NOT USED.
019. PROVIDE AN ADJUTANT DISCONNECT SWITCH FOR EACH ELECTRIC UNIT HEAVY DUTY IN MECHANICAL ROOMS. LOCATE LIGHTING FIXTURE LOCATIONS AS NECESSARY TO COORDINATE WITH EQUIPMENT AND TO PROVIDE OPTIMUM ILLUMINATION.
020. LOCATE TELEPHONE & DATA OUTLETS APPROXIMATELY AS SHOWN ON DWG. COORDINATE EXACT LOCATIONS OF EQUIPMENT WITH FURNISHERS AND EQUIPMENT DRAWINGS.
021. WHERE EQUIPMENT LIGHTING FIXTURES ARE CONTROLLED BY ONE OR MORE WALL SWITCHES, PROVIDE AN UNINTERRUPTED CIRCUIT CONDUCTOR FOR OPERATION OF THE EMERGENCY CONTROL.
022. MOUNT EXTERIOR WALL-MOUNTED LIGHTING FIXTURES APPROXIMATELY AS SHOWN EXCEPT AS INDICATED OR AS INDICATED ON THE ARCHITECTURAL DRAWINGS.
023. PROVIDE A ROOF-MOUNTED WEATHERPROOF SUPPLY OR RECEPTACLE ADJUTANT TO EACH ITEM OF ROOF-MOUNTED MAIN EQUIPMENT OTHER THAN EXHAUST FANS. IF THE EQUIPMENT DOES NOT INCLUDE AN INTEGRAL WEATHERPROOF RECEPTACLE, CONNECT TO THE 120 VOLT CIRCUIT SERVING RECEPTACLES IN THE CORRIDOR BELOW.
024. WHERE LIGHTING FIXTURES ARE SHOWN CONTROLLED BY TWO SWITCHES FOR TWO-LEVEL CONTROL, CONNECT THE OUTSIDE LAMP TO ONE SWITCH AND THE INSIDE LAMP(S) TO THE OTHER SWITCH.
025. PROVIDE WEATHERPROOF ADJUSTABLE PHOTOCELL CONTROL UNITS IN ACCESSIBLE HOOD LOCATIONS TO PROVIDE AUTOMATIC LIGHT CONTROL AS INDICATED. PROVIDE INDICATED WIRING AND FOR CONTRACTORS AS NECESSARY FOR REQUIRED CONTROL QUANTITIES AND SETTINGS. LOCATE CONDUCTORS AND/OR RELAYS IN EQUIPMENT ROOMS OR MISC. EQUIPMENT.
026. COORDINATE SWITCH LOCATIONS AND CIRCUIT BREAKERS WITH EQUIPMENT SUPPLIER, MECHANICAL AND PLUMBING CONTRACTORS AND WITH ALL EQUIPMENT SUPPLIER. FORMANETS SHOWN ON THE ARCHITECTURAL DRAWINGS.



Cingone/McBryer & Assoc., Inc.
824 CROSS LANE DRIVE
CHARLESTON, WV 25303
PHONE: (304) 343-0296
FAX: (304) 343-0296
5 FIDDLE COURT
MCDONALD, WV 26030
PHONE: (304) 806-2508



DISTRICT 1 HEADQUARTERS COMPLEX CHARLESTON		WEST VIRGINIA	
THIRD FLOOR POWER PLAN			
SCALE: 1/8" = 1'-0"			
DATE: 10/17/2	PROJECT NO: 1104	DRAW FILE: 1104-AP1	DRAWN (CHECK):
E. T. BOGUESS, ARCHITECT, INC.		WEST VIRGINIA	
PRINCETON		WEST VIRGINIA	
PROJECT NO: EO-6			

NO.	DATE	REVISIONS	BY	APP.

	NAME	COMPANY	EMAIL	PHONE	FAX
WVOT	RICHARD WICKERT	WVOffice of Technology	RICHARD.W.WICKERT@WVOT	304-558-8121	
-	Kevin Hypes	GRABAS	Kevin.hypes@grabas.com	304-344-0324	
<	Bryan Griffin	State Elec	bryan.griffin@stateelectric.com	304-563-6979	
	James Stewart	State Electric	james.stewart@stateelectric.com	304-839-5073	
-	Chris Miceli	Hubbell Premise Wiring	cmiceli@hubbell.com	724-622-9400	
-	MIKE SWANE	Pomeroy Michael	mswane@pomeroy.com	304-746-4434 (P) 304-746-4437 (CF)	
<	Tim Taylor	TLTEK, LLC	ttaylor@tltek.net	304-549-9243	
	Lewis Taylor	TLTEK, LLC	ltaylor@live.com	304-340-7070	
-	Bob Bishop	Mon Valley Technologies	rbishop@MUTECH-US	304-288-0746 (P) 304-278-7404 (F)	
<	Lawrence Host	Verizon	lawrence.host@verizon.com	304-294-0502	
	Joe Signorelli	Verizon	joseph.e.signorelli@verizon.com	304-296-2470 (PH) 304-284-0600 (FAX)	
DOT	GREG PHILLIPS	DISTRICT MANAGE	D-4	842-1550	
-	Bill Burns	TATE Communications	tburns@tatecomm.com	304-622-6293 (PHONE) 304-624-8283 (FAX)	

ADDENDUM ACKNOWLEDGEMENT FORM
SOLICITATION NO.: 631400005

Instructions: Please acknowledge receipt of all addenda issued with this solicitation by completing this addendum acknowledgment form. Check the box next to each addendum received and sign below. Failure to acknowledge addenda may result in bid disqualification.

Acknowledgment: I hereby acknowledge receipt of the following addenda and have made the necessary revisions to my proposal, plans and/or specification, etc.

Addendum Numbers Received:

(Check the box next to each addendum received)

- | | |
|---|--|
| <input type="checkbox"/> Addendum No. 1 | <input type="checkbox"/> Addendum No. 6 |
| <input type="checkbox"/> Addendum No. 2 | <input type="checkbox"/> Addendum No. 7 |
| <input type="checkbox"/> Addendum No. 3 | <input type="checkbox"/> Addendum No. 8 |
| <input type="checkbox"/> Addendum No. 4 | <input type="checkbox"/> Addendum No. 9 |
| <input type="checkbox"/> Addendum No. 5 | <input type="checkbox"/> Addendum No. 10 |

I understand that failure to confirm the receipt of addenda may be cause for rejection of this bid. I further understand that any verbal representation made or assumed to be made during any oral discussion held between Vendor's representatives and any state personnel is not binding. Only the information issued in writing and added to the specifications by an official addendum is binding.

Company

Authorized Signature

Date

NOTE: This addendum acknowledgement should be submitted with the bid to expedite document processing.
 Revised 6/8/2012