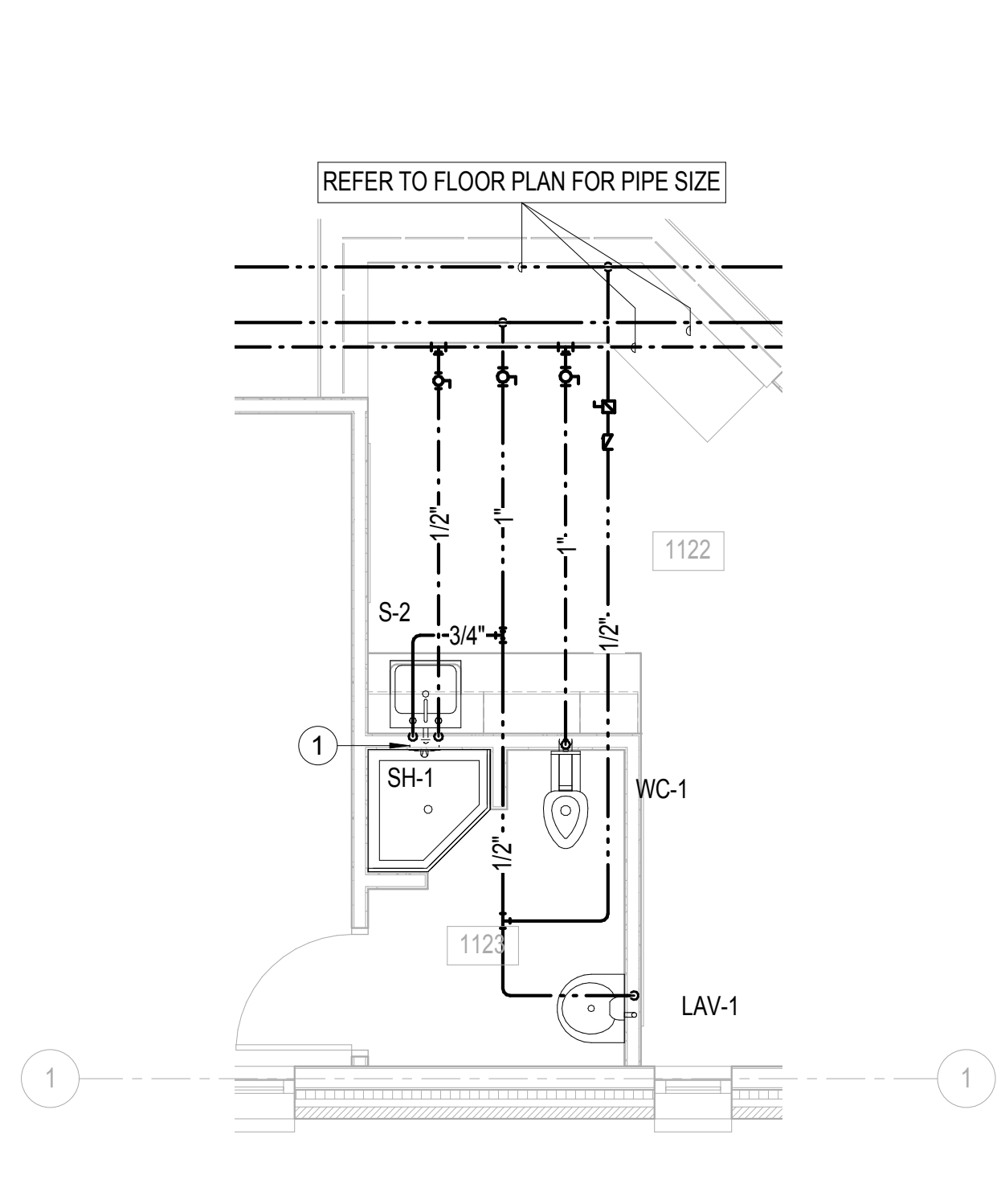
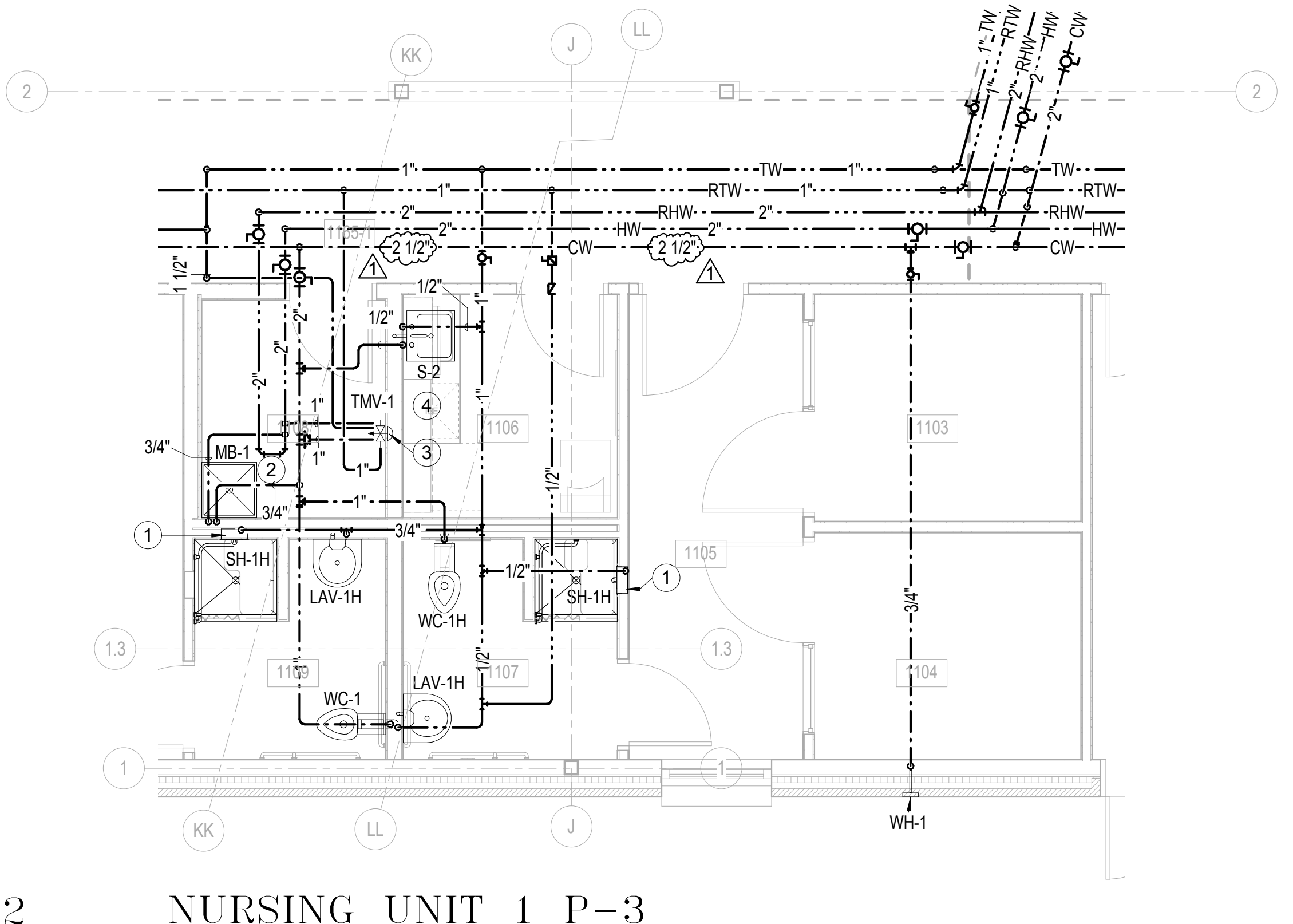


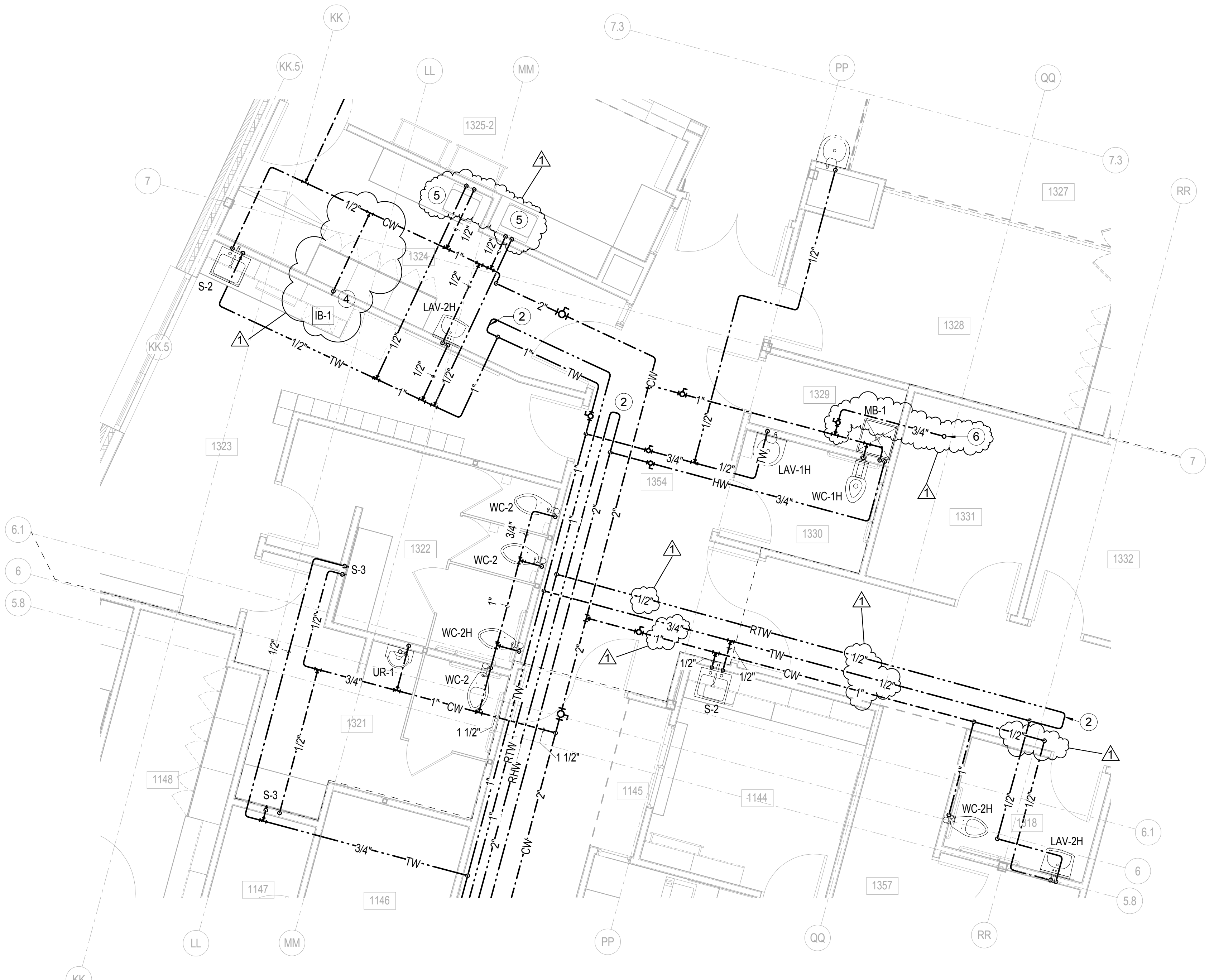
TYPICAL DOMESTIC PLUMBING LAYOUT P-1
SCALE: 1/4" = 1'-0"



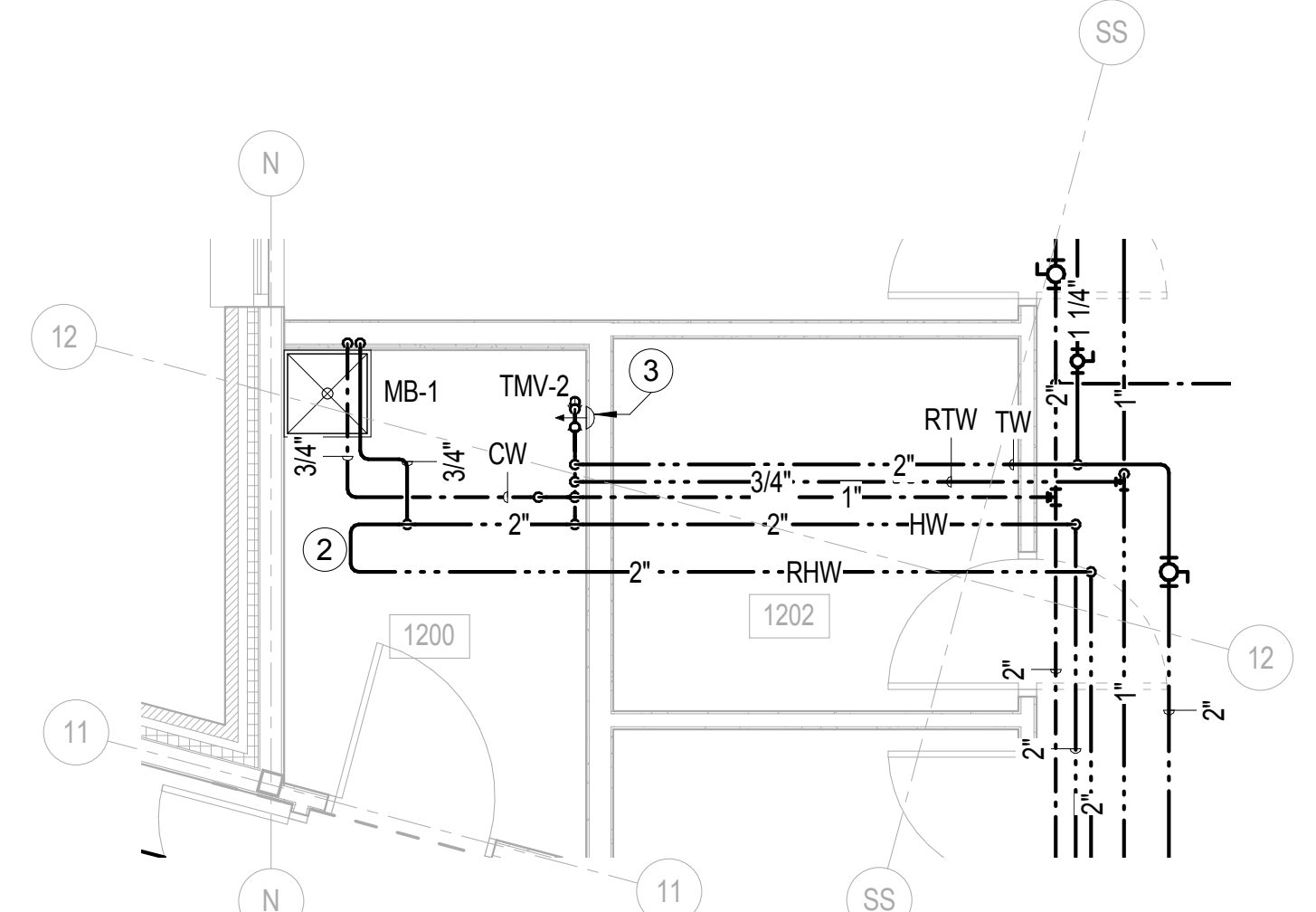
TYPICAL DOMESTIC PLUMBING LAYOUT P-2
SCALE: 1/4" = 1'-0"



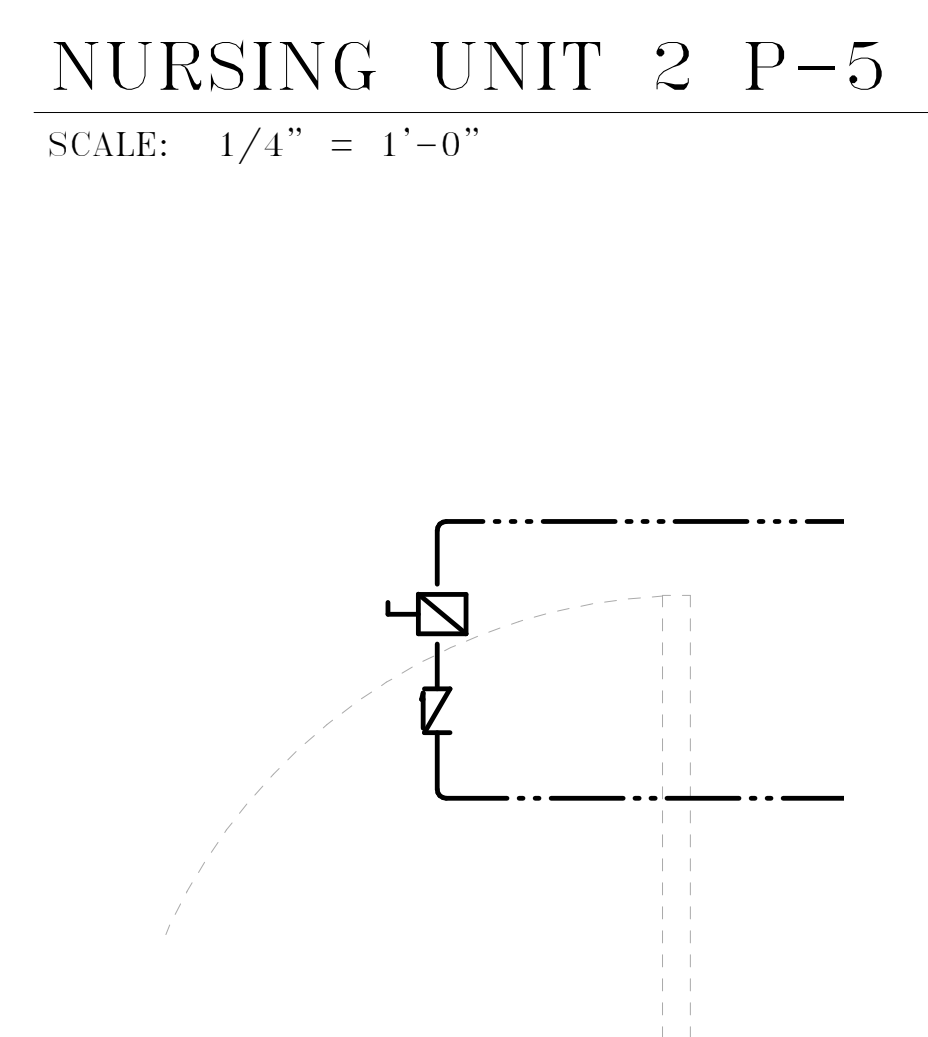
NURSING UNIT 1 P-3
SCALE: 1/4" = 1'-0"



NURSING UNIT 1 P-4
SCALE: 1/4" = 1'-0"



NURSING UNIT 2 P-5
SCALE: 1/4" = 1'-0"



NOTES
1. SEE FLOOR PLANS FOR PIPE SIZES.
2. MANUAL BALANCING VALVES SHALL BE BALL TYPE VALVE WITH MEMORY STOP. FURNISH AND INSTALL VALVE WITH SAME SIZE AS RECIRCULATING PIPE SIZE. BALANCING CONTRACTOR SHALL ADJUST AS NECESSARY FOR PROPER GPM FLOW.

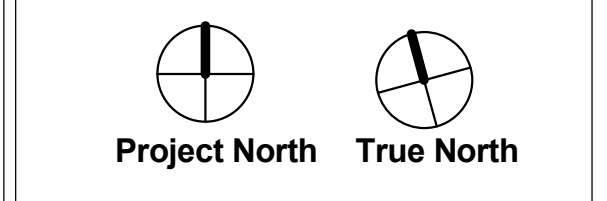
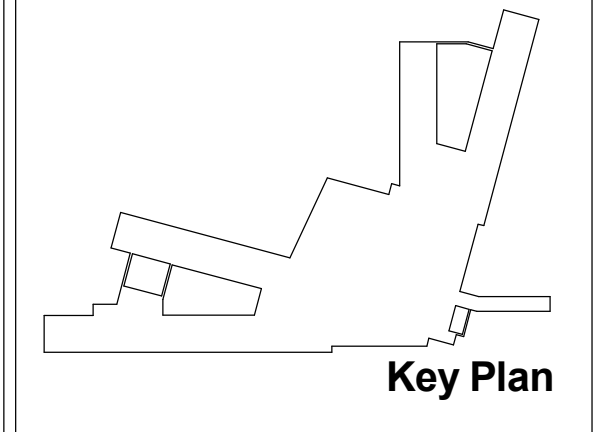
TYPICAL RECIRCULATING LOOP P-6
SCALE: 1" = 1'-0"

GENERAL NOTES

- REFER TO SHEET E001 AND M001 FOR ADDITIONAL NOTES
- WATER HAMMER ARRESTORS (WHA-1) SHALL BE INSTALLED ON ALL CW BRANCH LINES TO TOILETS AND LAUNDRY AREAS HW BRANCH PIPING TO LAUNDRY AREAS. UNITS SHALL BE INSTALLED IN AN ACCESSIBLE LOCATION.
- TRAP PRIMERS SHALL BE FURNISHED AND INSTALLED FOR ALL FLOOR DRAINS. CW PIPING SHALL BE 1/2" TYPE K COPPER. PRIMERS AND DISTRIBUTION UNITS SHALL BE INSTALLED IN AN ACCESSIBLE LOCATION.
- ALL SHUT-OFF VALVES SERVING THE PATIENT ROOMS SHALL BE LOCATED IN CORRIDOR ACCESSIBLE CEILING.
- MINIMUM PIPE SIZE TO FIXTURES IS 3/4". REDUCE TO 1/2" AT FIXTURE WHERE 1/2" PIPE IS REQUIRED
- ALL BRANCH LINES (CW/HWTW) SHALL HAVE A SHUT-OFF VALVE FOR ISOLATION.
- ALL PLUMBING FIXTURES PIPED WITH CW AND HW/TW SHALL BE INSTALLED WITH CW LOCATED ON THE RIGHT AND HW/TW ON THE LEFT
- REFER TO ARCHITECTURAL DRAWINGS FOR MOUNTING HEIGHTS AND COORDINATION OF FINAL LOCATION OF DEVICES AND FIXTURES.
- REFER TO SCHEDULE FOR REQUIRED SIZE(S) OF PIPING CONNECTIONS.
- REFER TO THE ROOM VENTILATION SCHEDULE FOR ROOM NAMES AND NUMBERS ON SHEET M602

PLAN NOTES

- CONTRACTOR SHALL FURNISH AND INSTALL BALL VALVE IN VERTICAL PIPING TO SHOWER LOCATED BEHIND ACCESSIBLE SHOWER PANEL. TYPICAL FOR ALL SHOWERS.
- REFER TO TYPICAL DOMESTIC WATER LAYOUT P-6.
- REFER TO TMV PIPING DETAIL FOR ADDITIONAL INFORMATION.
- RUN 1/2" CW TO ICEMAKER SUPPLY BOX (IB-1).
- SINK FURNISHED & INSTALLED BY KITCHEN EQUIPMENT SUPPLIER. FINAL CONNECTIONS BY PLUMBING CONTRACTOR.
- 3/4" UP TO RH-1



Bid Set

No.	Date	Description
1	1-30-2013	ADDENDUM #4

Date
14 November 2012

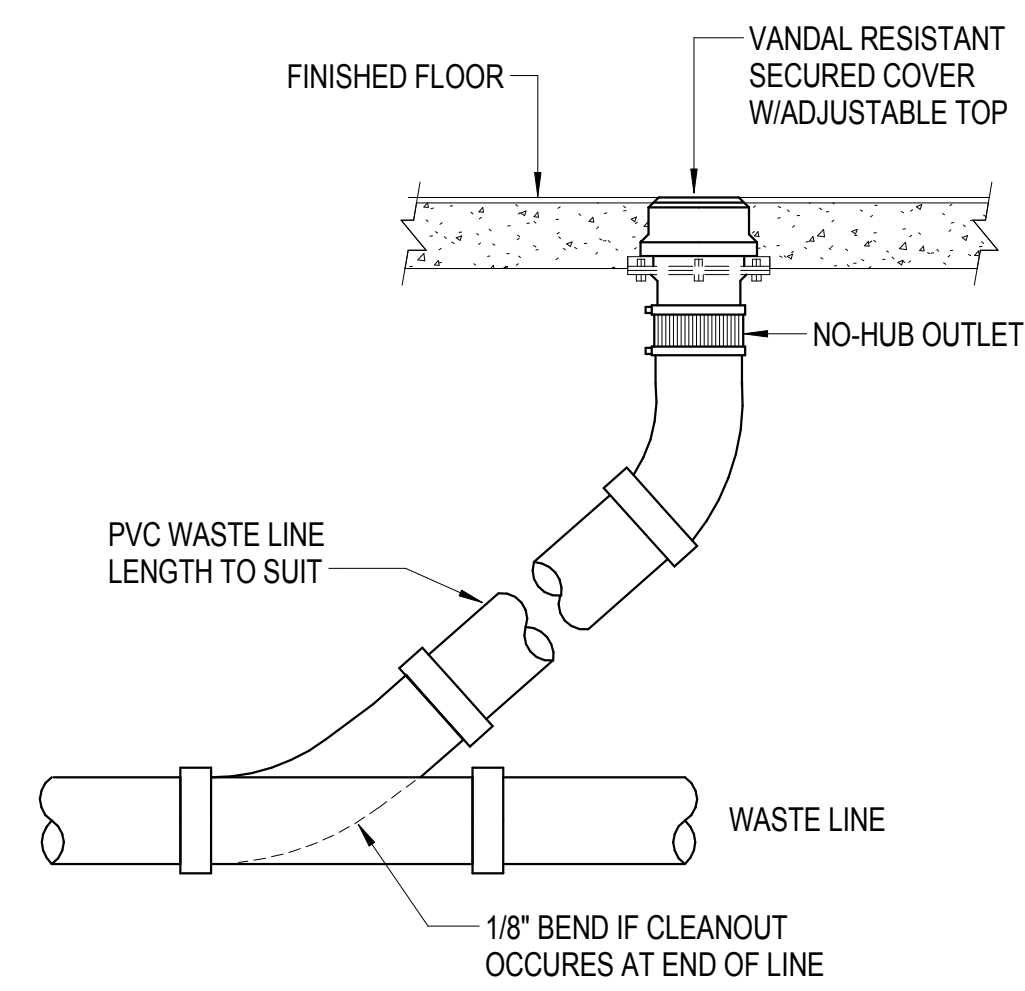
Project Title
WILLIAM R SHARPE HOSPITAL
50 Bed Addition

WSH13095
936 Sharpe Hospital Road
Weston, WV 26452-8550

Drawing Title
ENLARGED
PLUMBING PLANS

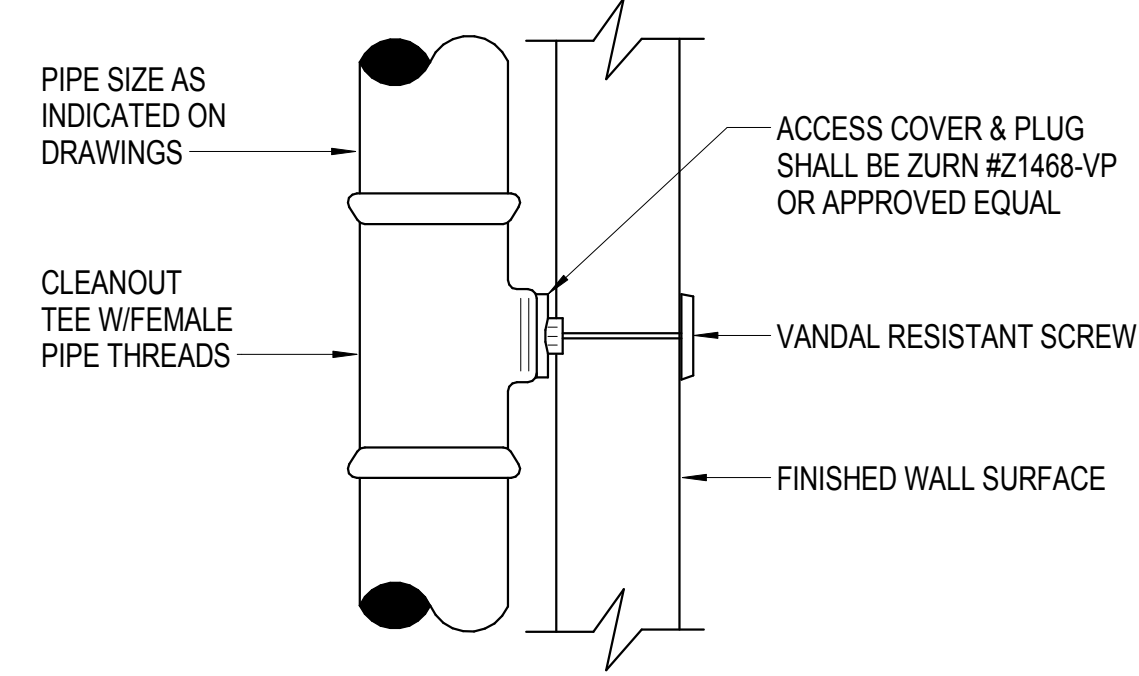
Project Number
11-170

Drawing Number
P204

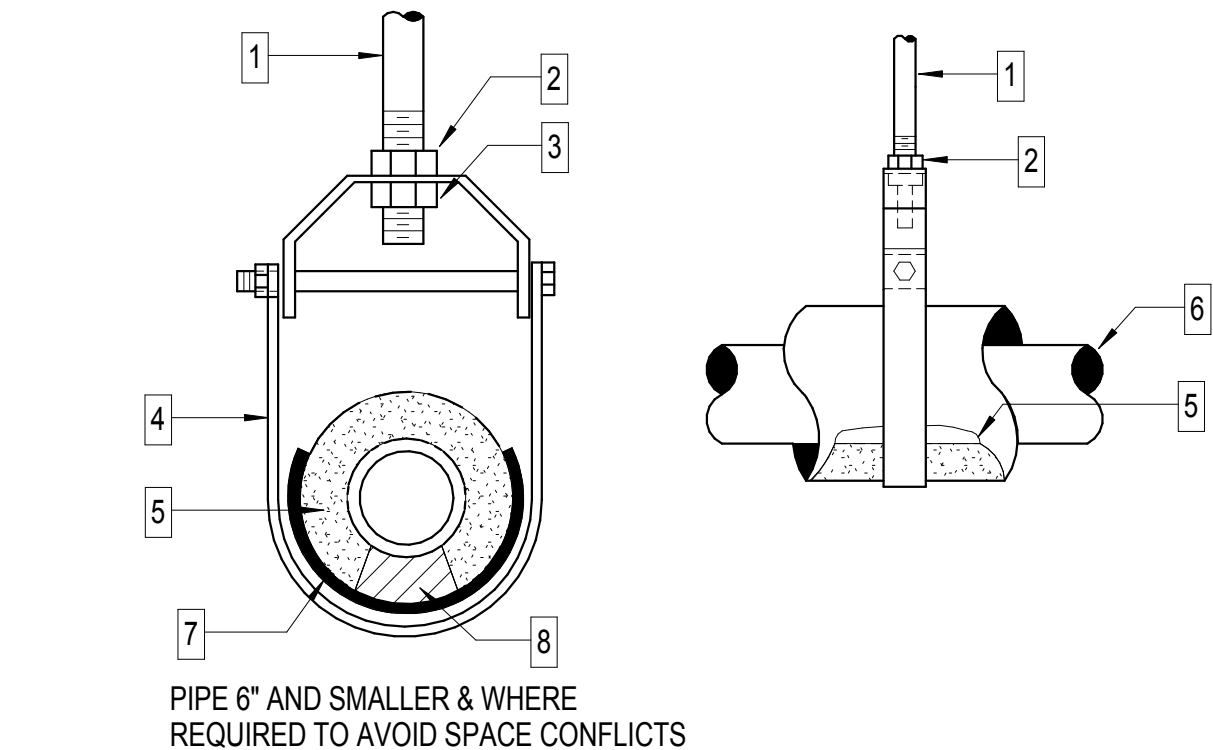


NOTE:
FLOOR CLEANOUTS SHALL BE ZURN SERIES Z1400 / ZN1400 IN ALL AREAS.

TYPICAL FLOOR CLEANOUT DETAIL
NOT TO SCALE



TYPICAL WALL CLEANOUT W/ACCESS COVER DETAIL
NOT TO SCALE



PIPE 6" AND SMALLER & WHERE REQUIRED TO AVOID SPACE CONFLICTS

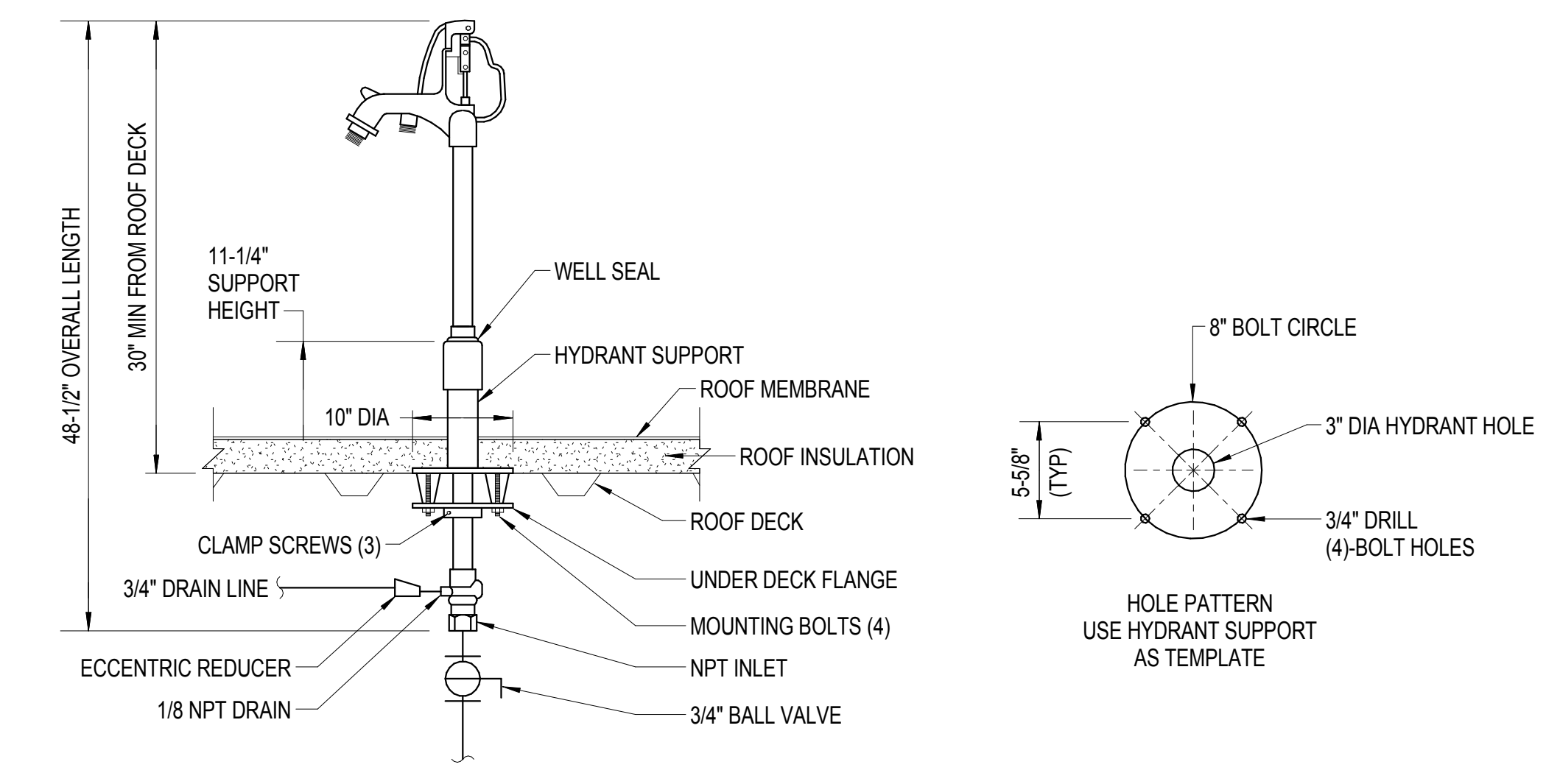
HANGER ROD SPACING	
PIPE SIZE	1" 1-1/4" 1-1/2" 2" 2-1/2" 3" 4" 5" 6" 8" 10" 12"
MAX ALLOWABLE SPACING	7 FT. 8 FT. 9 FT. 10 FT. 11 FT. 12 FT. 14 FT. 16 FT. 17 FT. 19 FT. 22 FT. 23 FT.

NOTE: FOR TRAPEZE HANGER TAKE SPACING OF SMALLEST PIPE ON TRAPEZE

HANGER ROD SCHEDULE			
PIPE SIZE	ROD SIZE	PIPE SIZE	ROD SIZE
UP TO 2"	3/8" DIA.	4" THRU 5"	5/8" DIA.
2-1/2" THRU 3"	1/2" DIA.	6" THRU 12"	7/8" DIA.

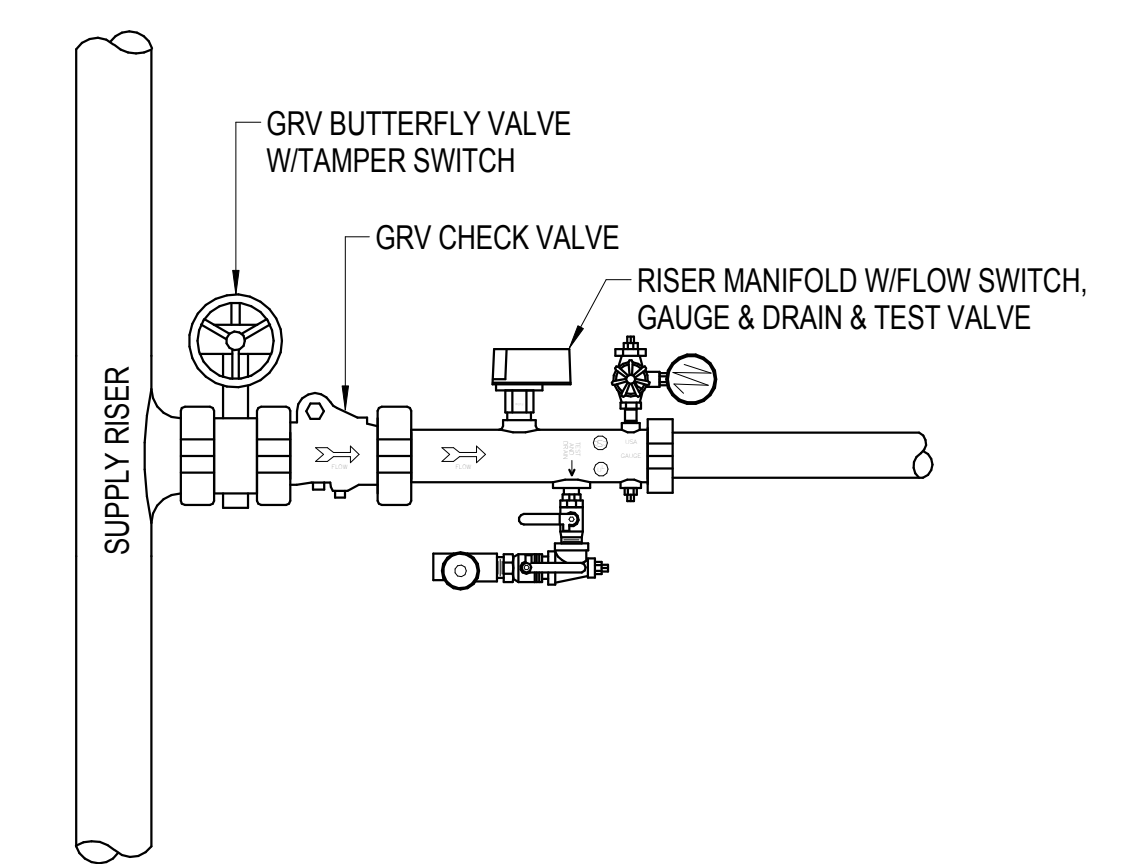
- NOTES**
- 1 HANGER ROD
 - 2 LOCKING NUT
 - 3 SUPPORT NUT
 - 4 HEAVY DUTY CLEVIS HANGER
 - 5 INSULATION (WHERE REQUIRED)
 - 6 PIPE
 - 7 14 GAUGE ZINC COATED SHEET STEEL SADDLE AT LEAST 6" LONG
 - 8 WOOD BLOCKS

TYPICAL PIPE HANGER DETAIL
NOT TO SCALE

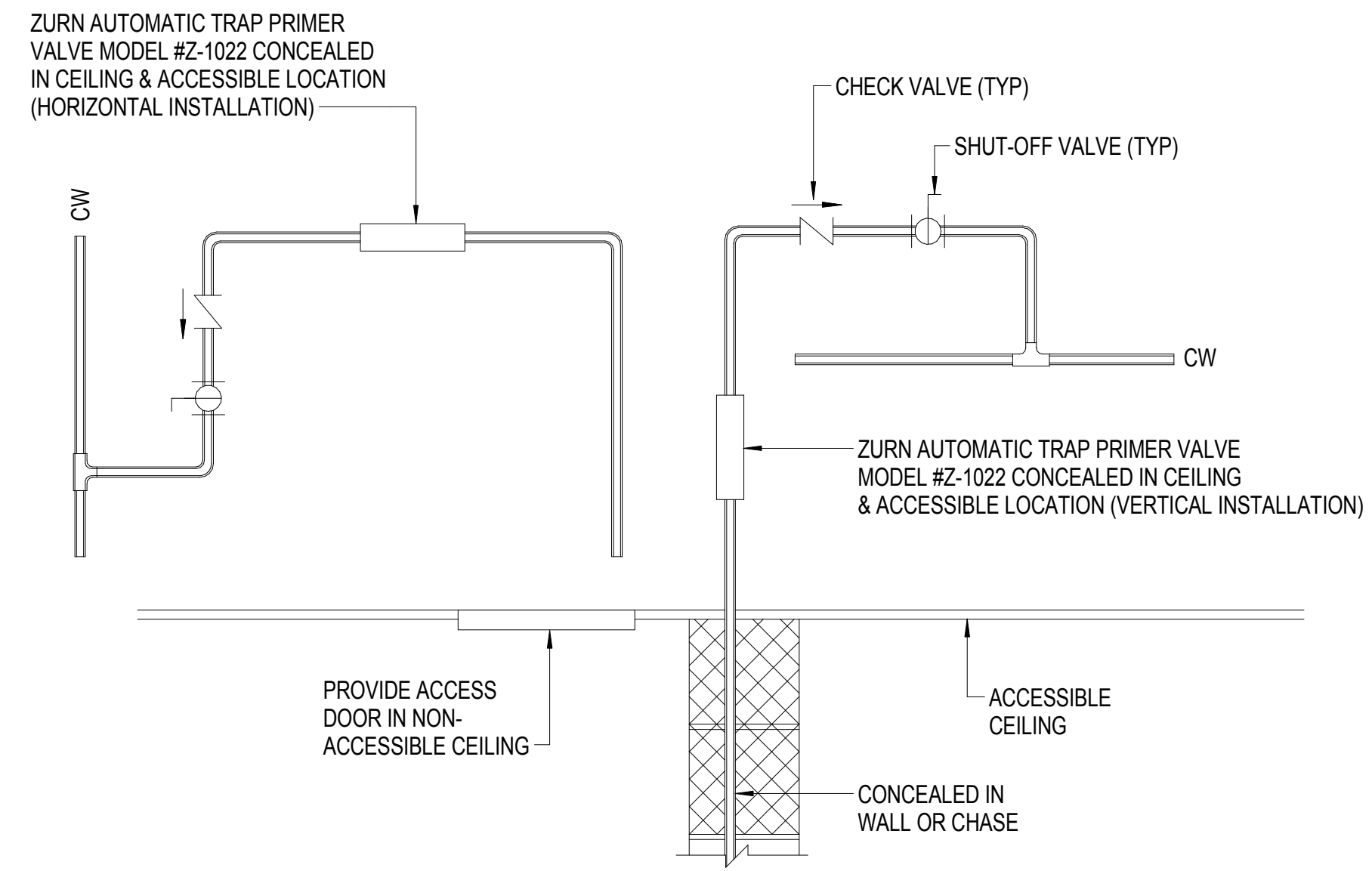


- NOTES:**
- FREEZELESS ROOF HYDRANT SHALL BE ZURN MODEL #Z1388 OR APPROVED EQUAL.
 - CONTRACTOR SHALL PROVIDE WATERTIGHT SEAL WITH FLASHING OR BOOT AT ROOF PENETRATION.
 - CONTRACTOR SHALL INSULATE DOMESTIC COLD WATER LINE WITH 1" FIBERGLASS INSULATION WITH AS.

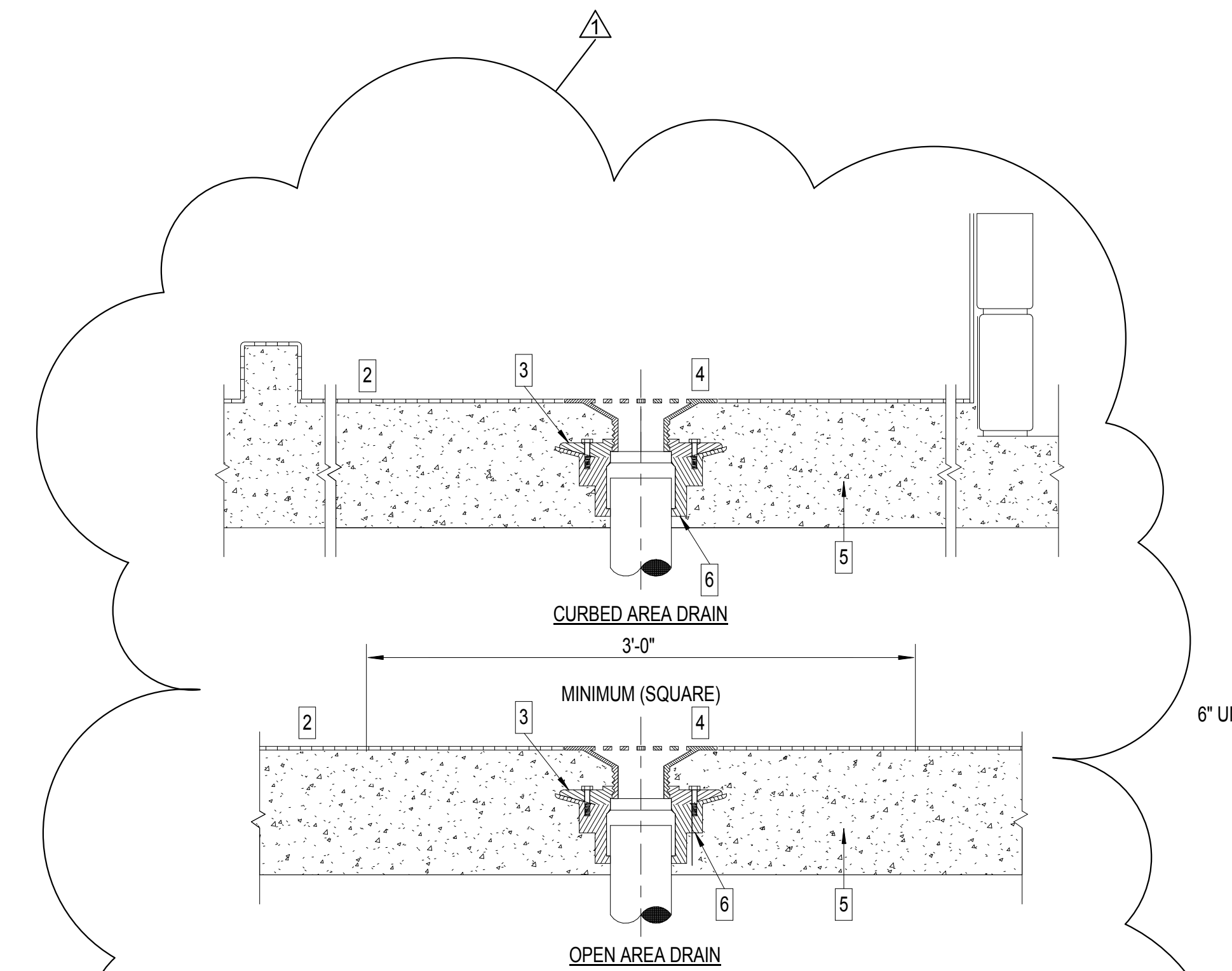
FREEZELESS ROOF HYDRANT DETAIL
NOT TO SCALE



TYPICAL SPRINKLER ZONE CONTROL ASSEMBLY
NOT TO SCALE

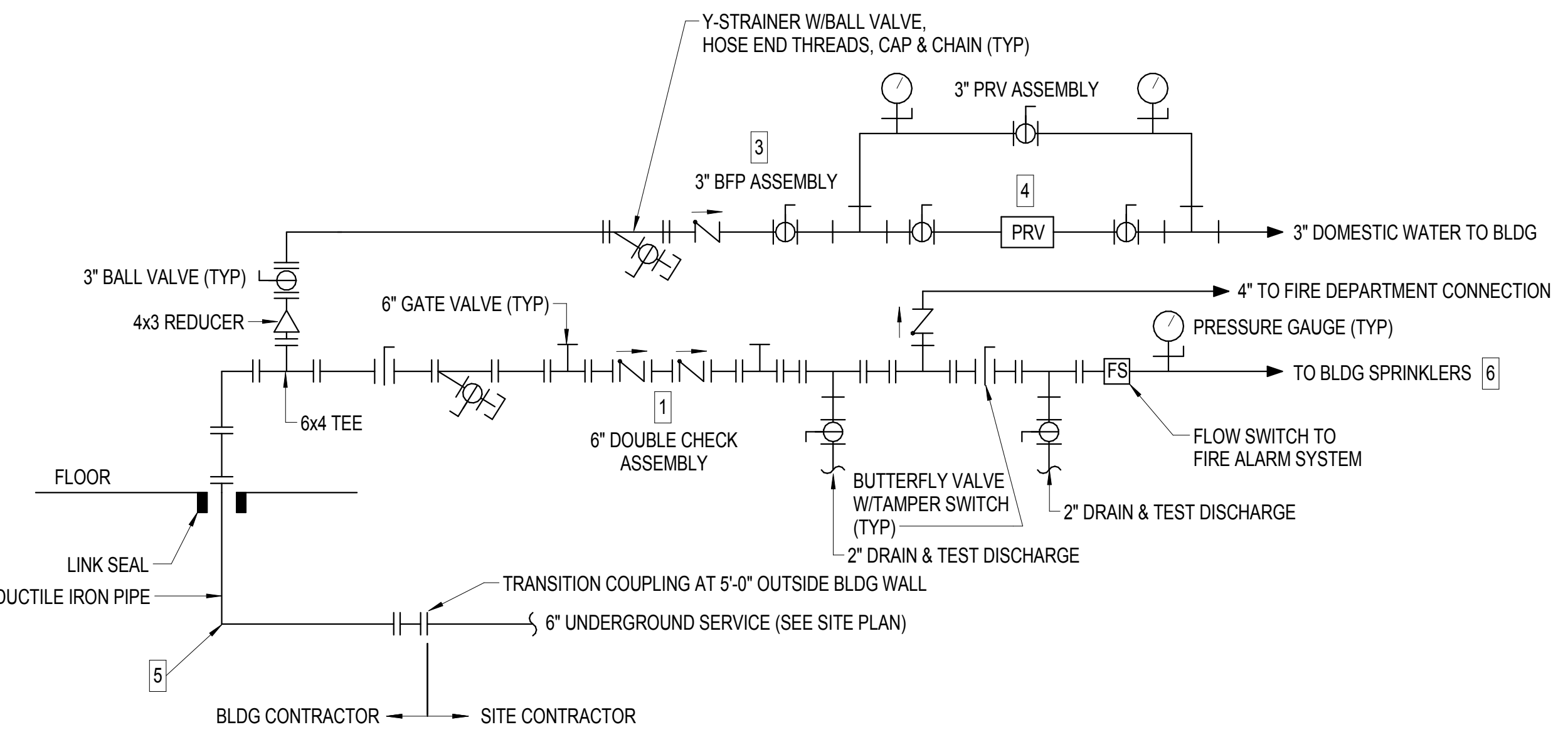


FLOOR DRAIN FOR CONCRETE FLOOR W/TRAP PRIMER DETAIL
NOT TO SCALE



- NOTES:**
- NOT APPLICABLE
 - FINISH FLOOR SURFACE (SEE ARCHITECTURAL DRAWINGS)
 - CLAMP PAN TIGHTLY INTO DRAIN COLLAR
 - FLOOR DRAIN STRAINER SECURED WITH VANDAL RESISTANT SCREWS
 - ROUGH FLOOR SLAB
 - DRAIN BODY POURED IN PLACE, RECESSED BELOW ROUGH SLAB SURFACE

FLOOR DRAIN INSTALLATION DETAIL
NOT TO SCALE



- NOTES:**
- 6" DOUBLE CHECK ASSEMBLY SHALL BE WATTS MODEL #709, OR EQUAL.
 - NOT USED.
 - 3" BACKFLOW PREVENTER ASSEMBLY SHALL BE WATTS MODEL #007 WITH VALVES, STRAINER & AIR GAP. ROUTE COPPER DRAIN LINE TO NEAREST FLOOR DRAIN.
 - PRV ASSEMBLY SHALL BE WATTS MODEL #900 SERIES W/STRAINER & BYPASS. SET REGULATOR AT 80 PSI.
 - ALL DUCTILE IRON PIPING SHALL BE COATED WITH TNEPEC SERIES 66 HI-BUILD EPOXY.
 - FIRE PROTECTION CONTRACTOR SHALL CONFIRM SPRINKLER ZONING REQUIREMENTS TO COMPLY WITH NFPA & LOCAL AUTHORITIES HAVING JURISDICTION. THE COMPLETE OPERATIONAL SYSTEM WITH REQUIRED QUANTITY OF ZONES & COMPONENTS SHALL BE INCLUDED IN BASE BID PROPOSAL.

COMBINED FIRE PROTECTION & DOMESTIC WATER SERVICE SCHEMATIC
NOT TO SCALE

Bid Set

No.	Date	Description
1	1-30-2013	ADDENDUM #4

Revisions

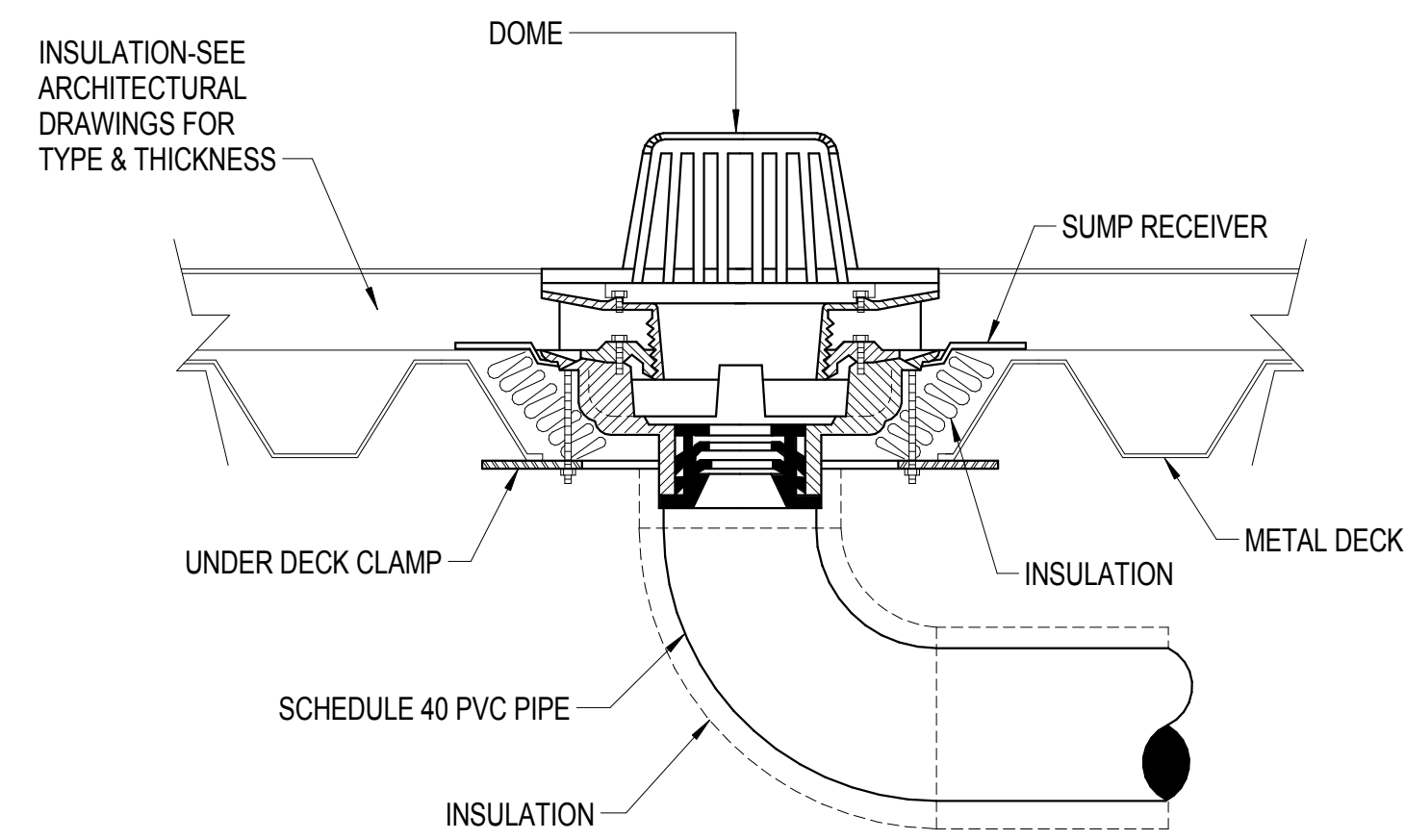
Date
14 November 2012

Project Title
WILLIAM R SHARPE HOSPITAL
50 Bed Addition

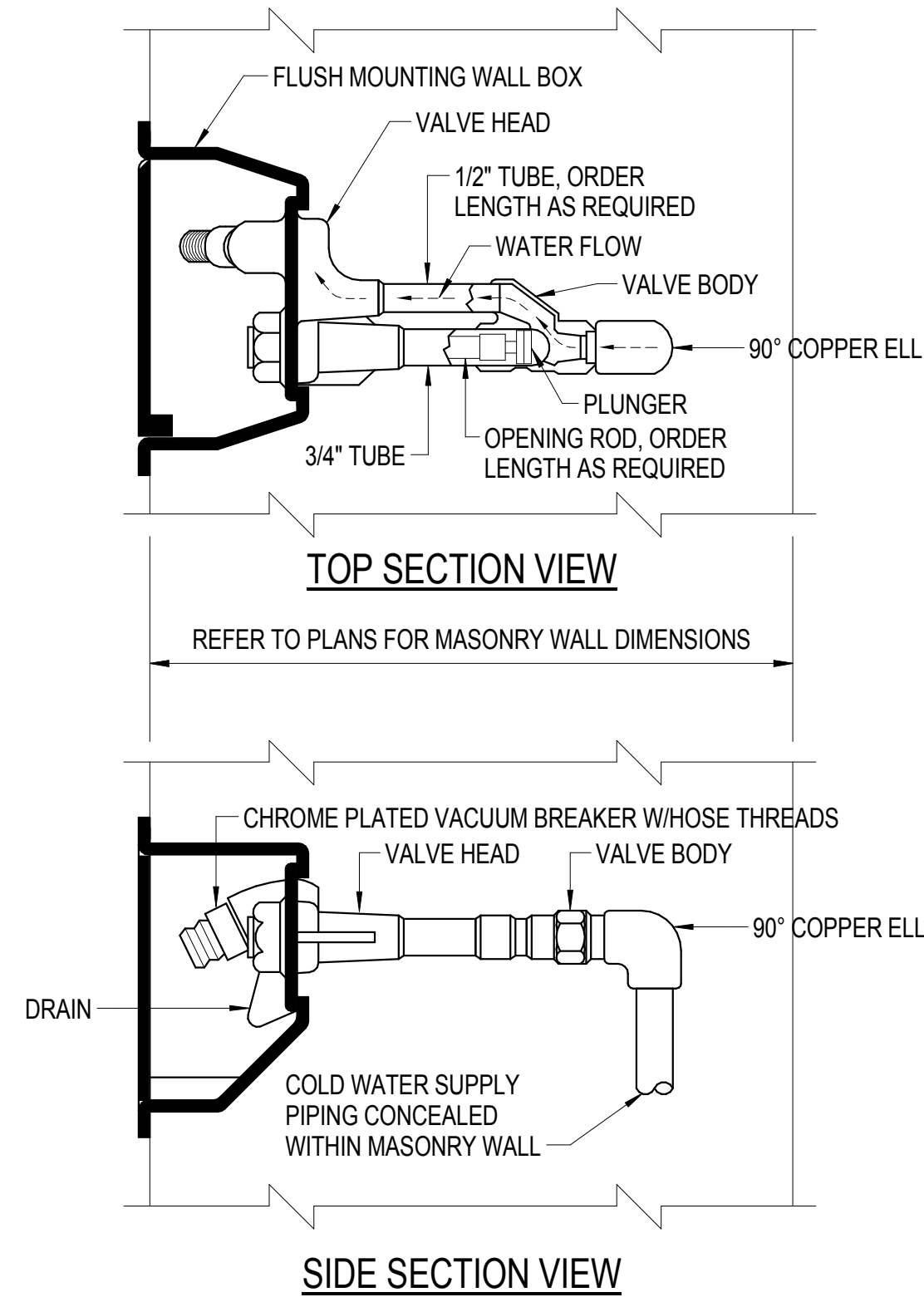
WSH13095
936 Sharpe Hospital Road
Weston, WV 26452-8550

Drawing Title
PLUMBING DETAILS

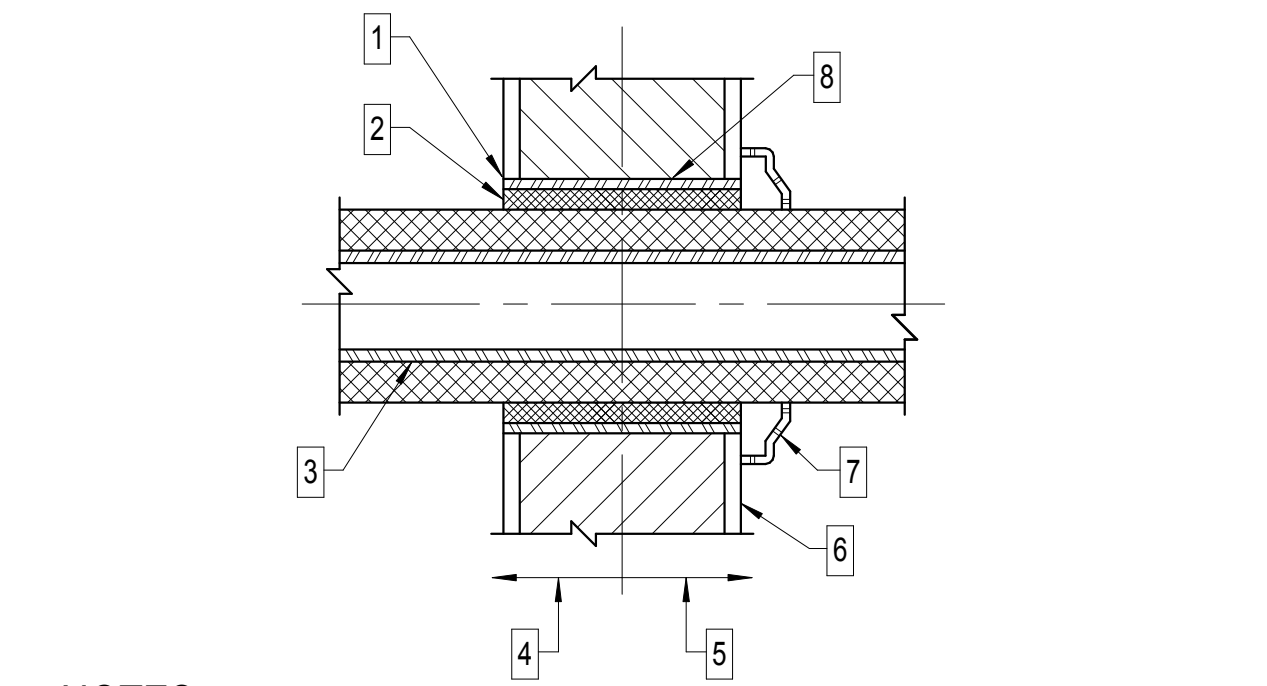
Project Number
11-170
Drawing Number
P401



ROOF DRAIN DETAIL
NOT TO SCALE

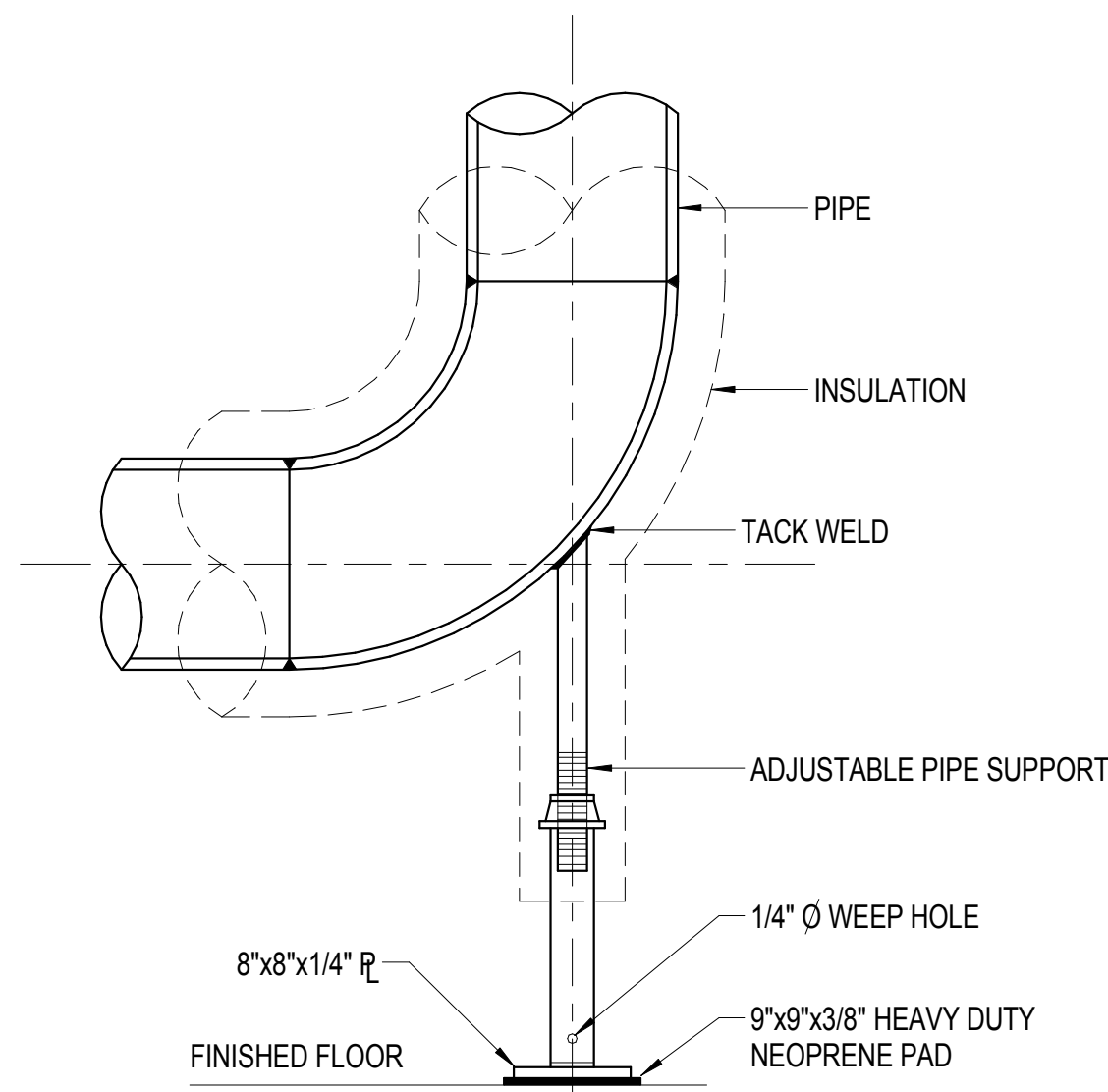


**TYPICAL OUTSIDE
NON-FREEZE WALL HYDRANT DETAIL**
NOT TO SCALE

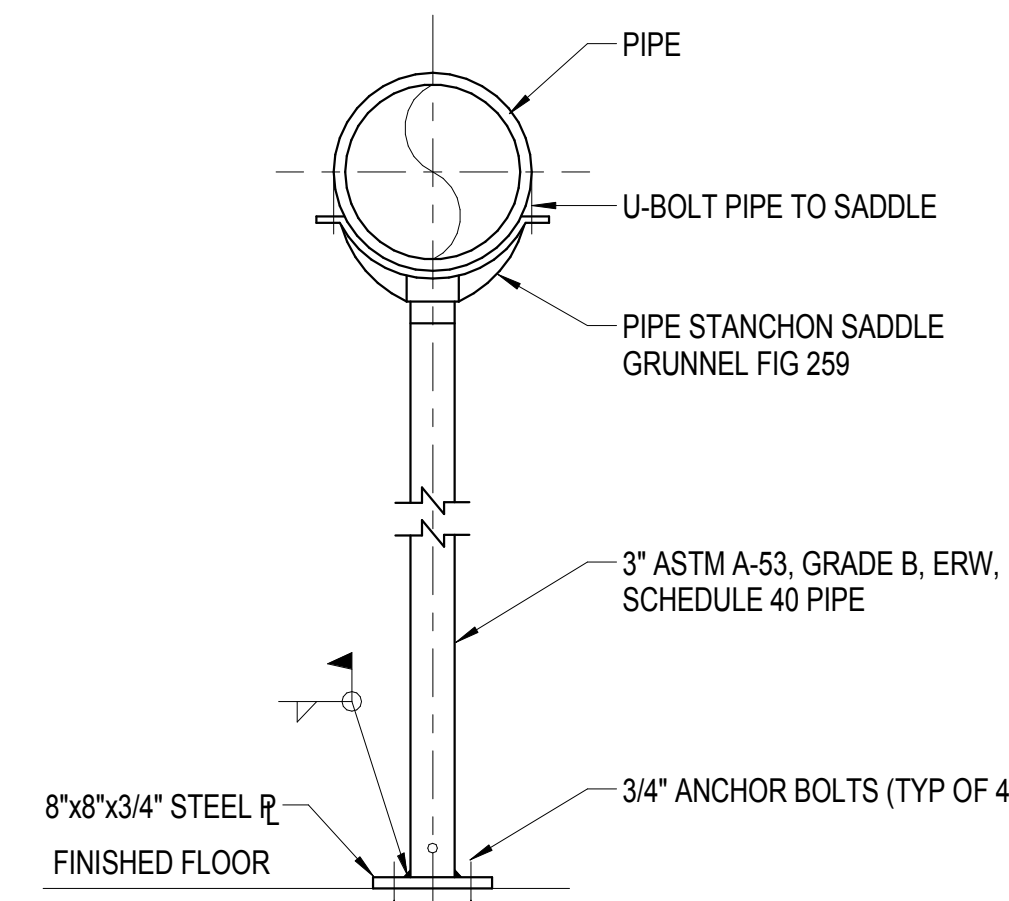


- NOTES:**
- 1 TERMINATE SLEEVE FLUSH WITH FINISHED WALL SURFACES.
 - 2 SEAL OR CAULK SLEEVES THRU FIRE WALLS IN A SMOKE TIGHT MANNER.
 - 3 PIPE & INSULATION TO BE CENTERED IN SLEEVE (DO NOT SUPPORT PIPE FROM SLEEVE).
 - 4 CONCEALED PIPING.
 - 5 PIPING EXPOSED TO VIEW.
 - 6 FINISHED WALL SURFACE.
 - 7 FINISHED ESCUTCHEON PLATE FLUSH AGAINST WALL & OF SIZE TO COMPLETELY COVER OPENING.
 - 8 PIPE SLEEVE OF SIZE TO PASS PIPE & INSULATION WITH ANNULAR SPACE AS REQUIRED

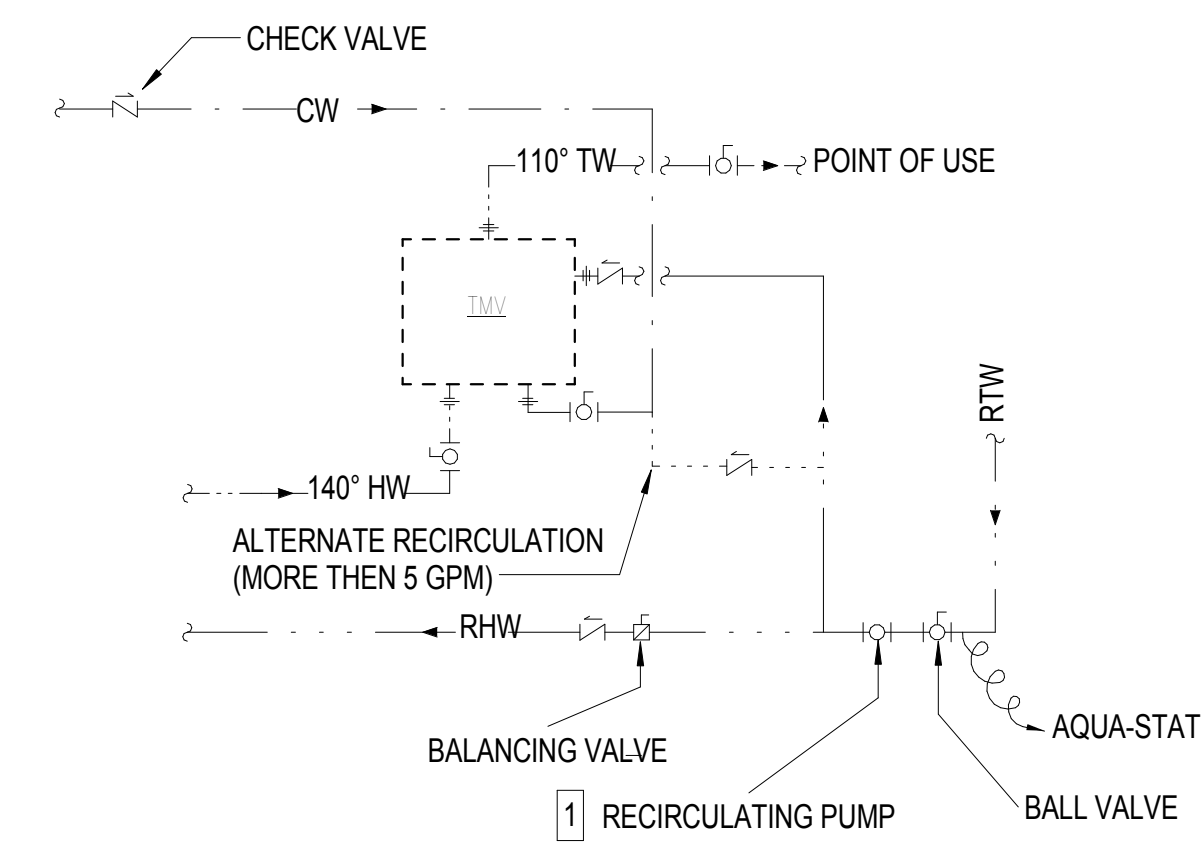
PIPE THRU WALL DETAIL
NOT TO SCALE



PIPE SUPPORT DETAIL
NOT TO SCALE

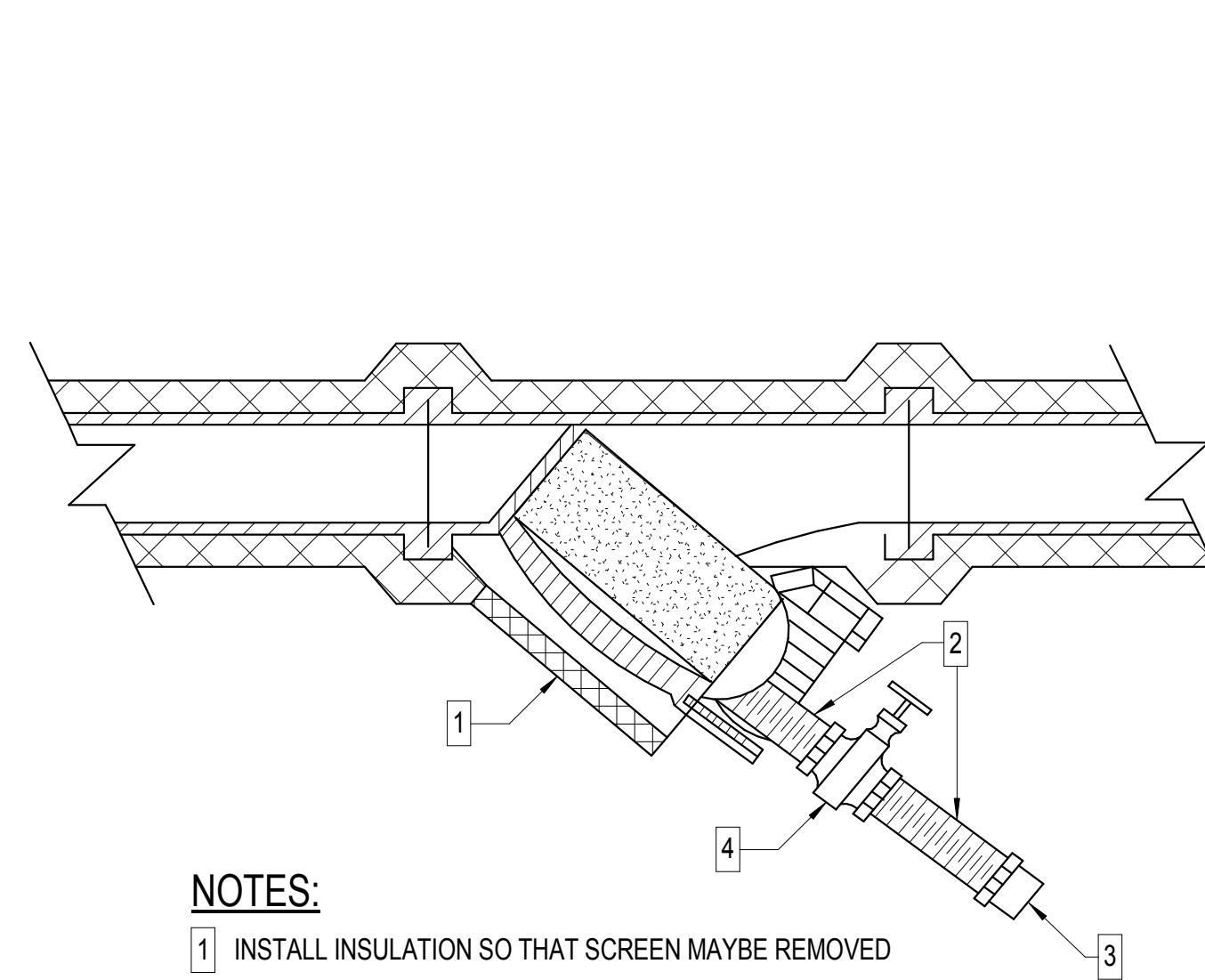


PIPE SUPPORT DETAIL
NOT TO SCALE



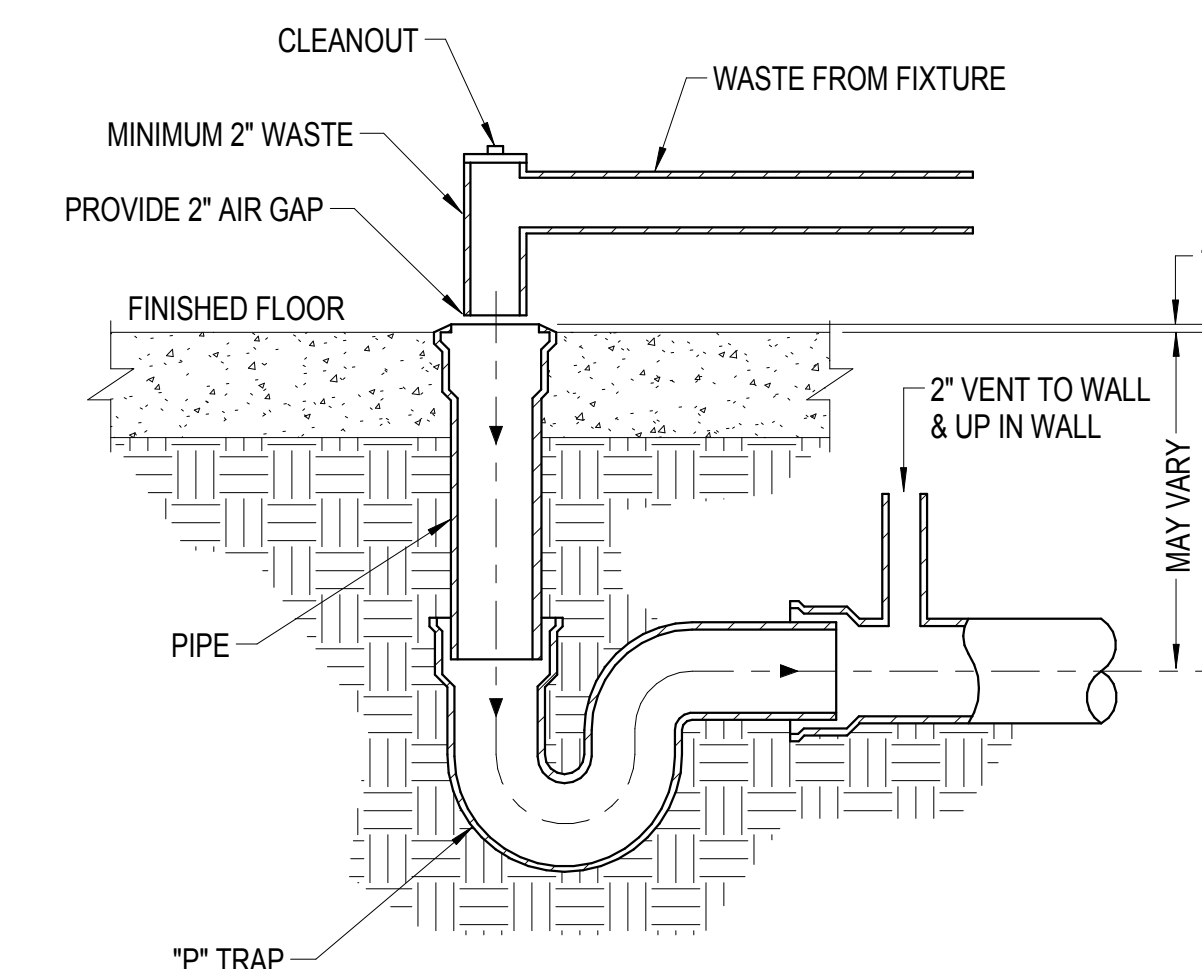
- 1 RECIRCULATING PUMP SHALL BE EQUAL TO TACO MODEL #008-B, IN-LINE 2 GPM, 1/8 HP, 120V, ALL BRONZE FITTED, 150 PSI WORKING PRESSURE.

TMV PIPING DETAIL
NOT TO SCALE

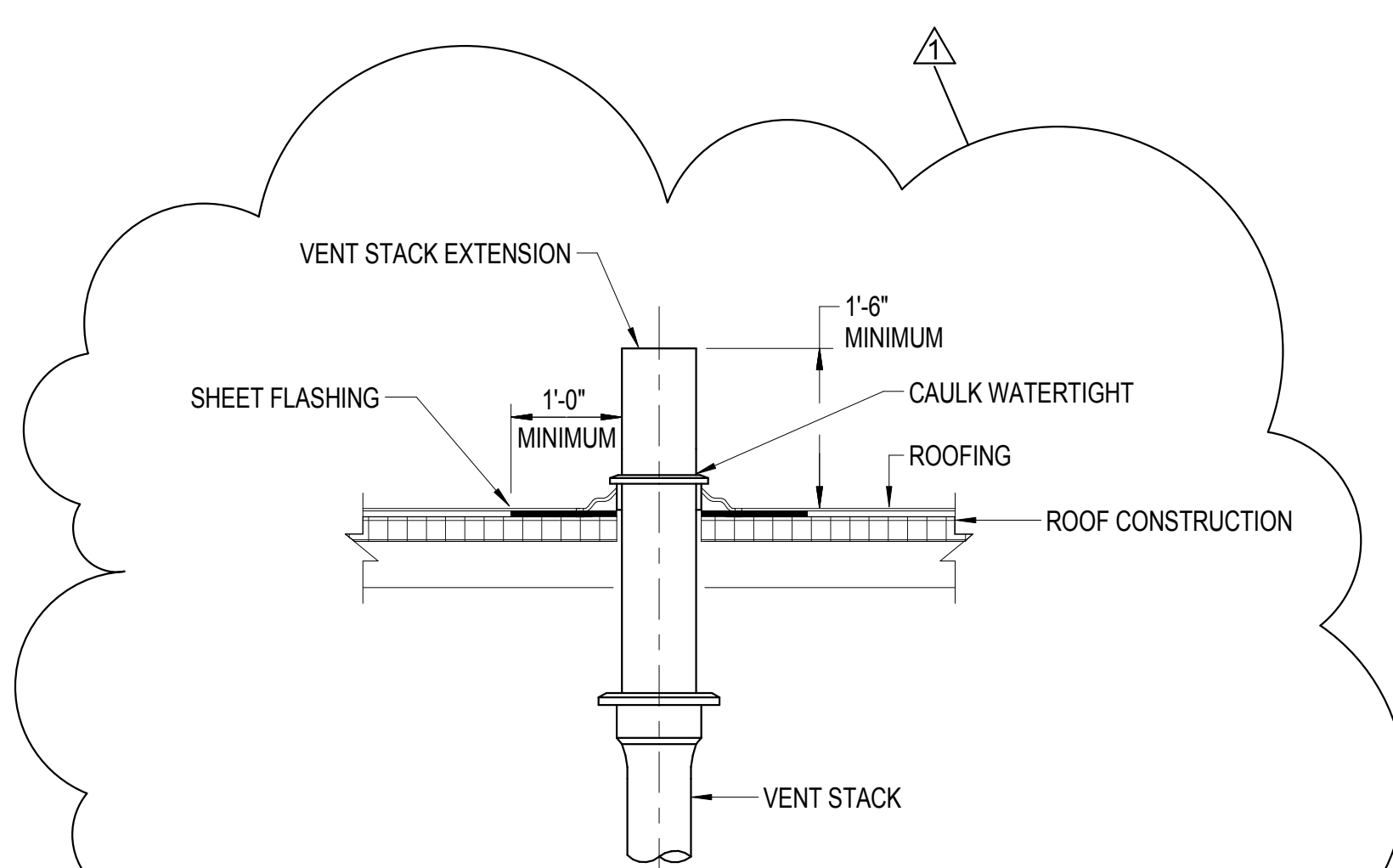


- NOTES:**
- 1 INSTALL INSULATION SO THAT SCREEN MAYBE REMOVED
 - 2 SHORT THREADED NIPPLE
 - 3 3/4" THREADED END CONNECTION WITH CAP AND CHAIN
 - 4 BALL VALVE

TYPICAL STRAINER DETAIL
NOT TO SCALE



**HUB DRAIN USED
FOR INDIRECT WASTE**
NOT TO SCALE



- NOTES:**
1. ALL VENT LINES EXTENDED THRU ROOF & EXPOSED TO OUTDOORS SHALL BE EITHER CAST IRON OR DWV COPPER TO 6" MINIMUM BELOW ROOF LINE.
 2. ALL VTR'S SHALL NOT BE LESS THAN 4" DIA.
 3. VENT LINES SHALL EXTEND 18" ABOVE ROOF LINE OR OTHERWISE AS INDICATED ON DRAWINGS.

VENT THRU ROOF DETAIL
NOT TO SCALE



Bid Set

No.	Date	Description
1-30-2013	ADDENDUM #4	

Date
14 November 2012

Project Title
**WILLIAM R SHARPE
HOSPITAL**
50 Bed Addition

WSH13095
936 Sharpe Hospital Road
Weston, WV 26452-8550

Drawing Title
PLUMBING DETAILS

Project Number
11-170
Drawing Number
P402