

Bid Set

| No. | Date | Addendum # | Description |
|-----|------|------------|-------------|
| | | | |
| | | | |
| | | | |
| | | | |
| | | | |
| | | | |
| | | | |
| | | | |
| | | | |

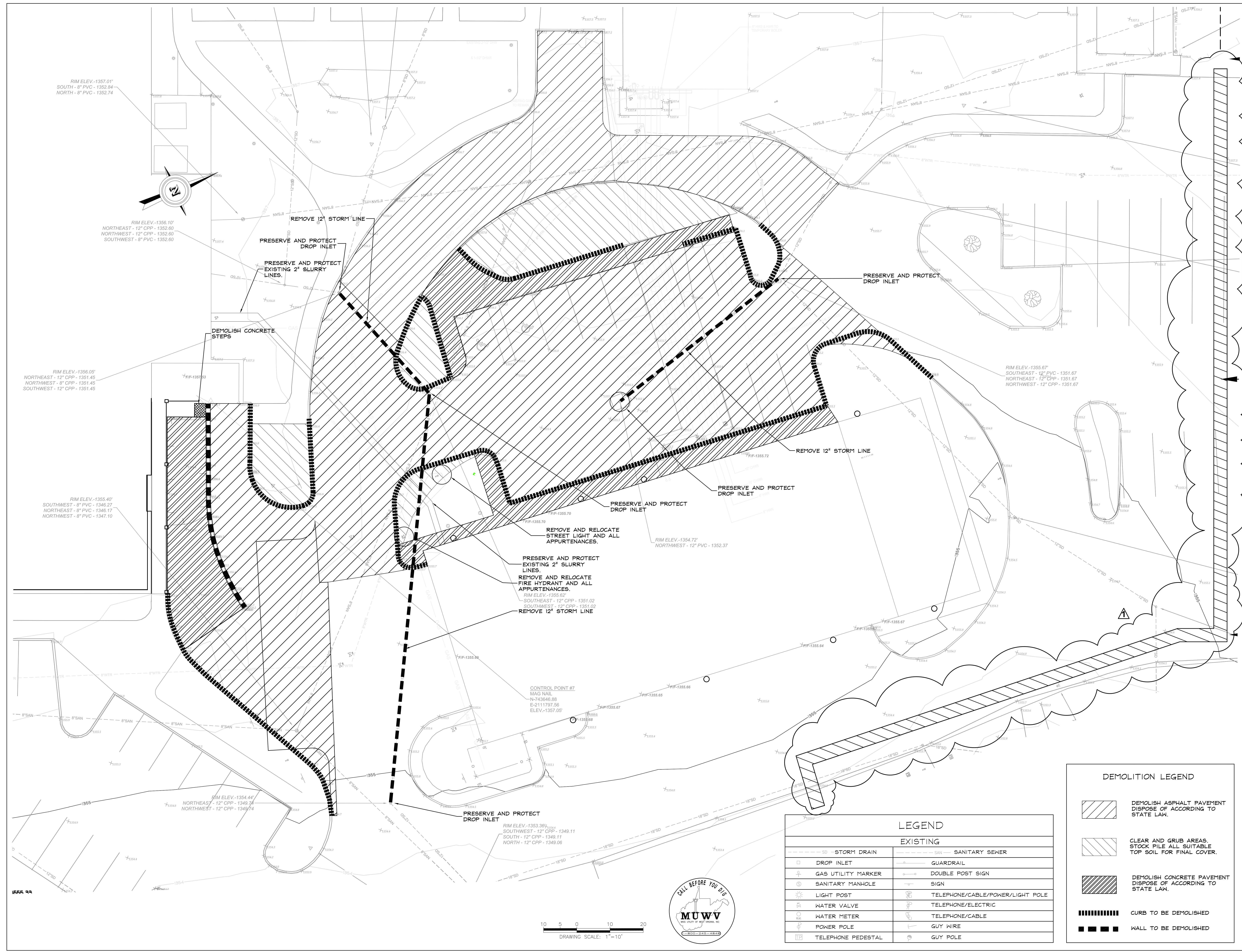
Revisions
 Date
 14 November 2012

Project Title
**William R. Sharpe
 Hospital
 50 Bed Addition**

Drawing Title
**LOADING DOCK
 DEMOLITION PLAN**

Project Number
 11-170
 Drawing Number
C112

936 Sharpe Hospital Road
 Weston, WV 26452-8550



| LEGEND | |
|----------|----------------------------------|
| EXISTING | |
| SD | STORM DRAIN |
| SM | SANITARY SEWER |
| DI | DROP INLET |
| GM | GAS UTILITY MARKER |
| SMH | SANITARY MANHOLE |
| LP | LIGHT POST |
| WM | WATER VALVE |
| WM | WATER METER |
| PP | POWER POLE |
| TP | TELEPHONE PEDESTAL |
| GR | GUARDRAIL |
| DP | DOUBLE POST SIGN |
| S | SIGN |
| TC | TELEPHONE/CABLE/POWER/LIGHT POLE |
| TE | TELEPHONE/ELECTRIC |
| TC | TELEPHONE/CABLE |
| GW | GUY WIRE |
| GP | GUY POLE |

| DEMOLITION LEGEND | |
|-------------------|---|
| | DEMOLISH ASPHALT PAVEMENT DISPOSE OF ACCORDING TO STATE LAW. |
| | CLEAR AND GRUB AREAS. STOCK PILE ALL SUITABLE TOP SOIL FOR FINAL COVER. |
| | DEMOLISH CONCRETE PAVEMENT DISPOSE OF ACCORDING TO STATE LAW. |
| | CURB TO BE DEMOLISHED |
| | WALL TO BE DEMOLISHED |



1555 22