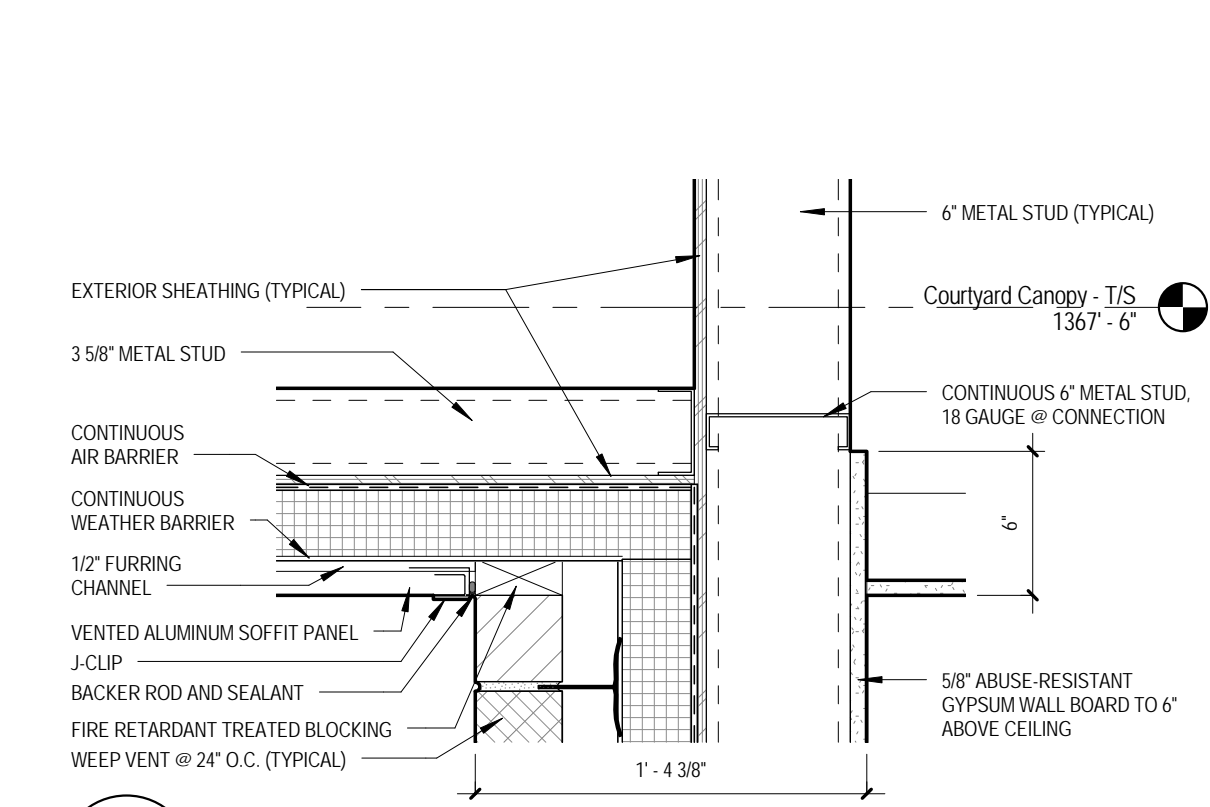
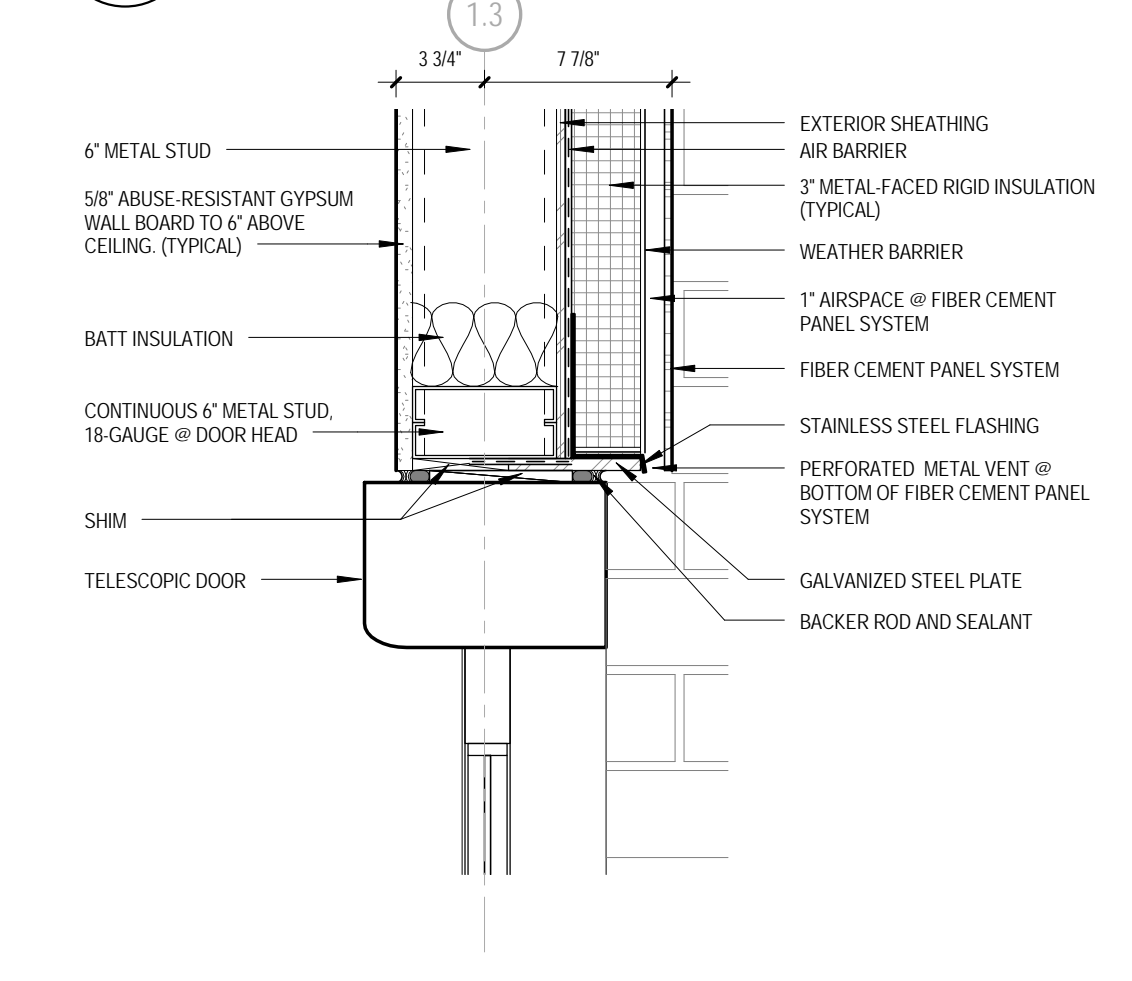


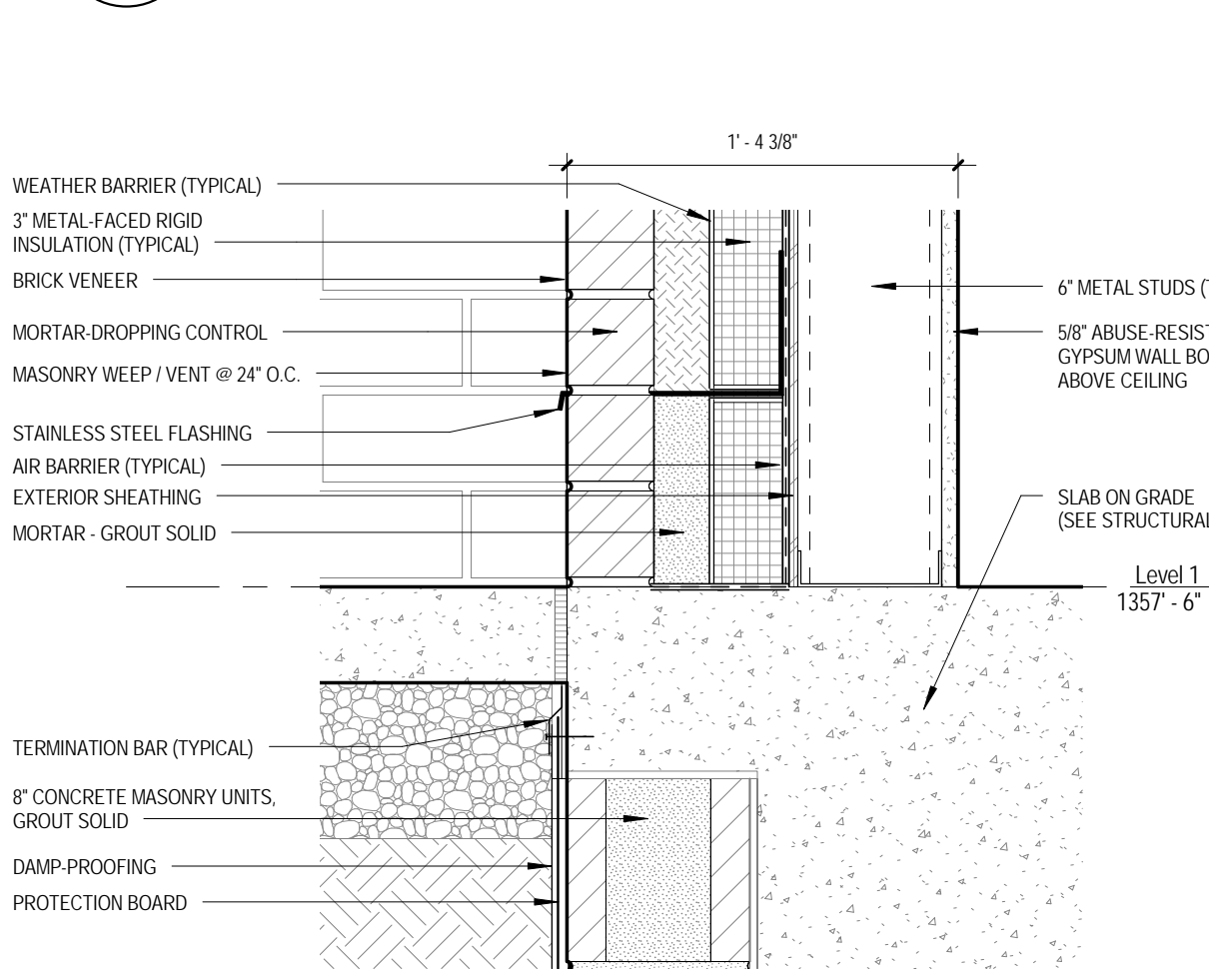
13 Fiber Cement Panel @ Metal Panel Soffit
 A502 1 1/2" = 1'-0"



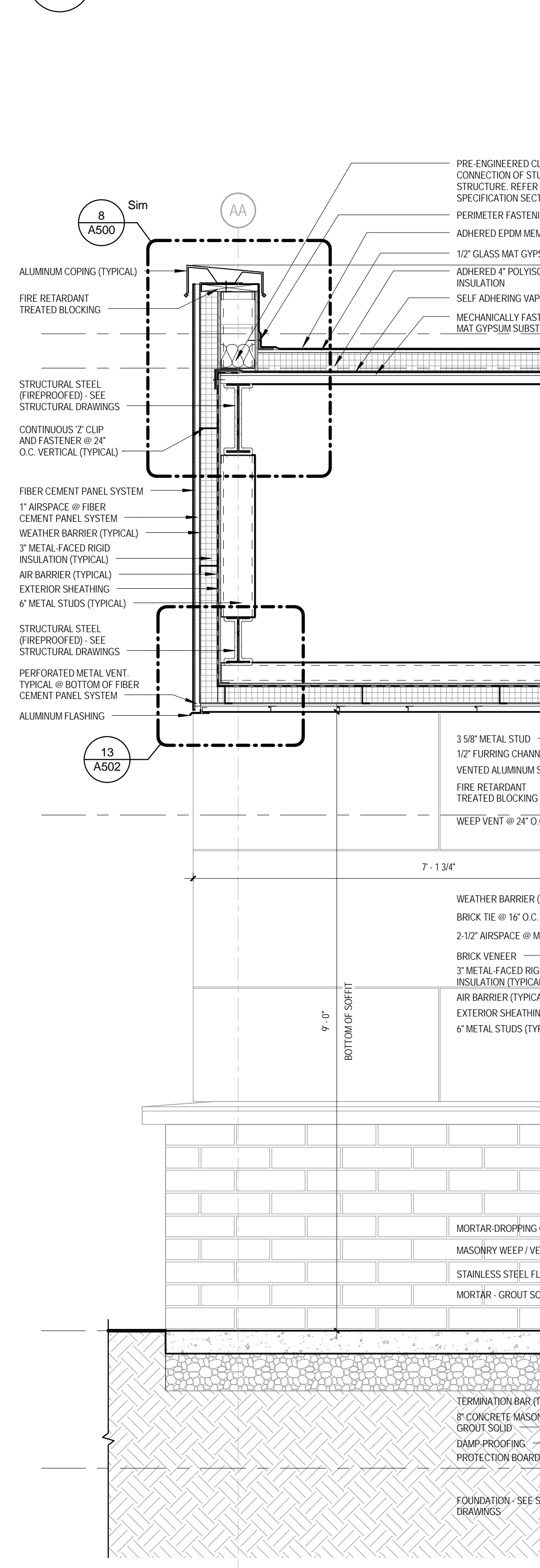
12 Metal Panel Soffit @ Masonry
 A502 1 1/2" = 1'-0"



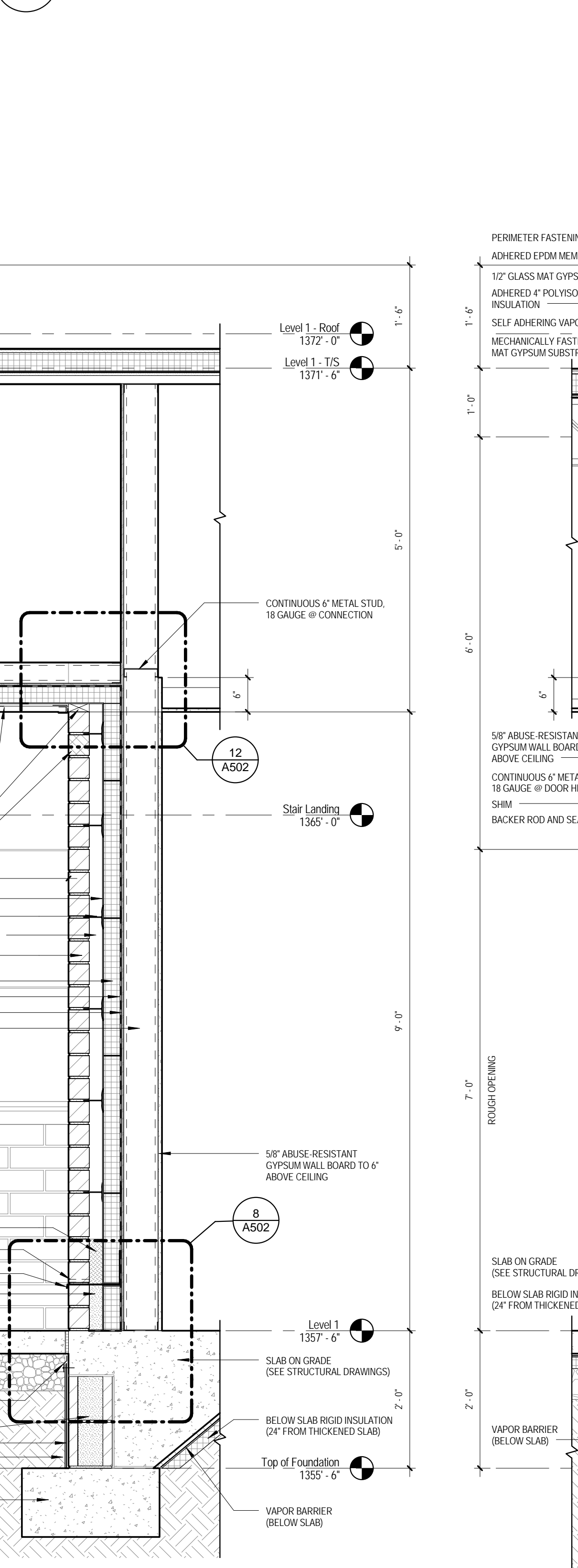
9 Telescoping Door Jamb
 A502 1 1/2" = 1'-0"



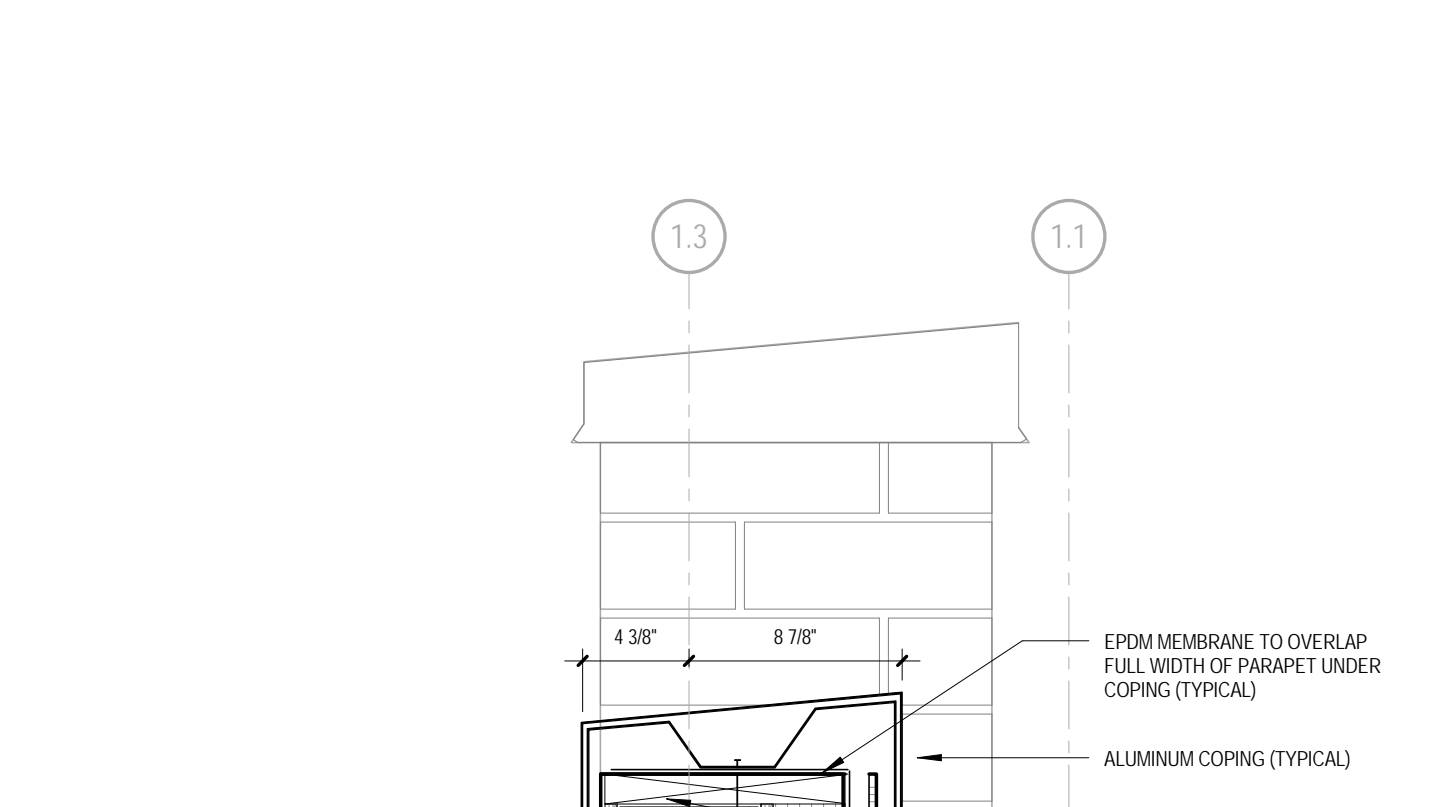
8 Foundation @ Exterior Slab
 A502 1 1/2" = 1'-0"



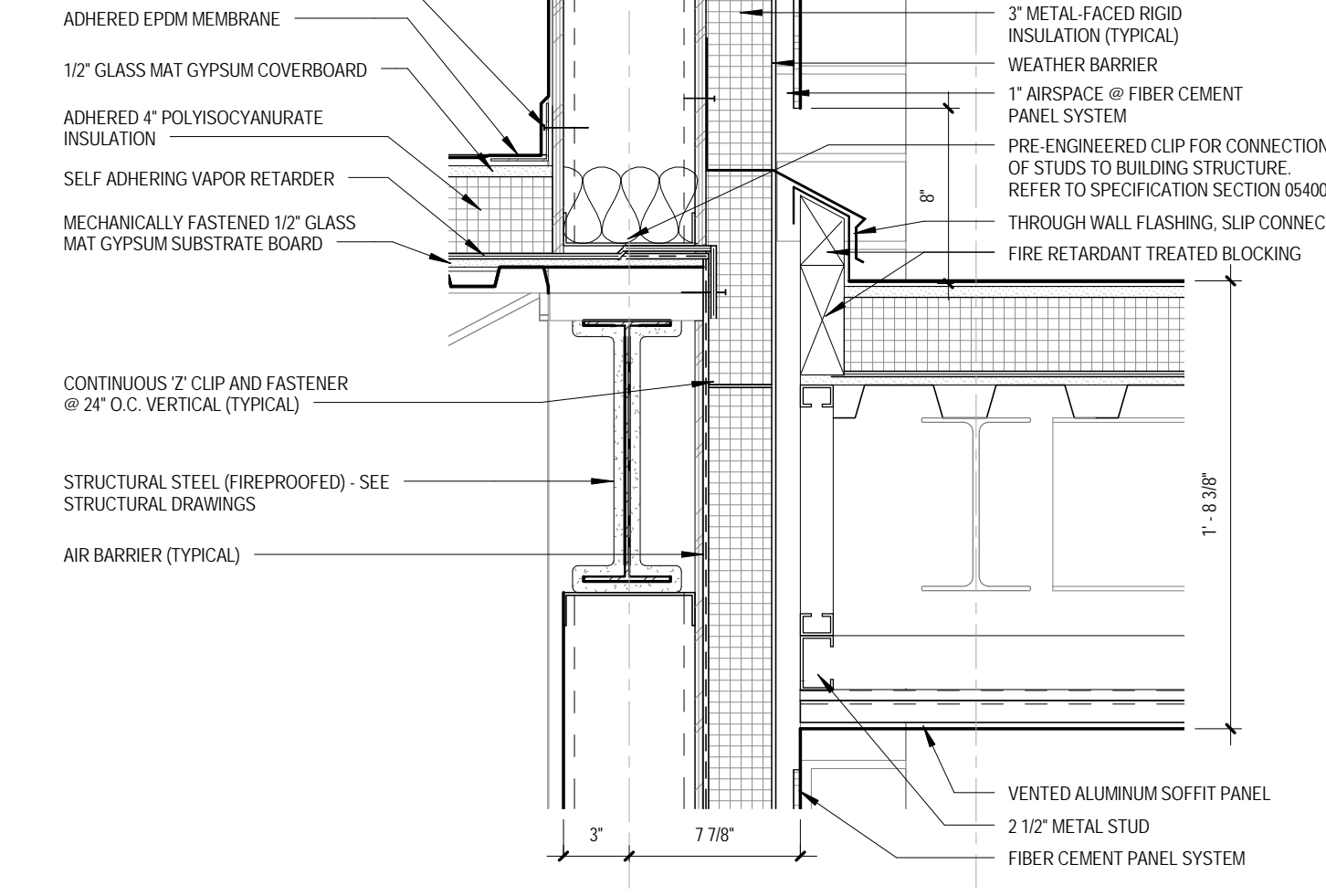
4 Wall Section - 12
 A502 3/4" = 1'-0"



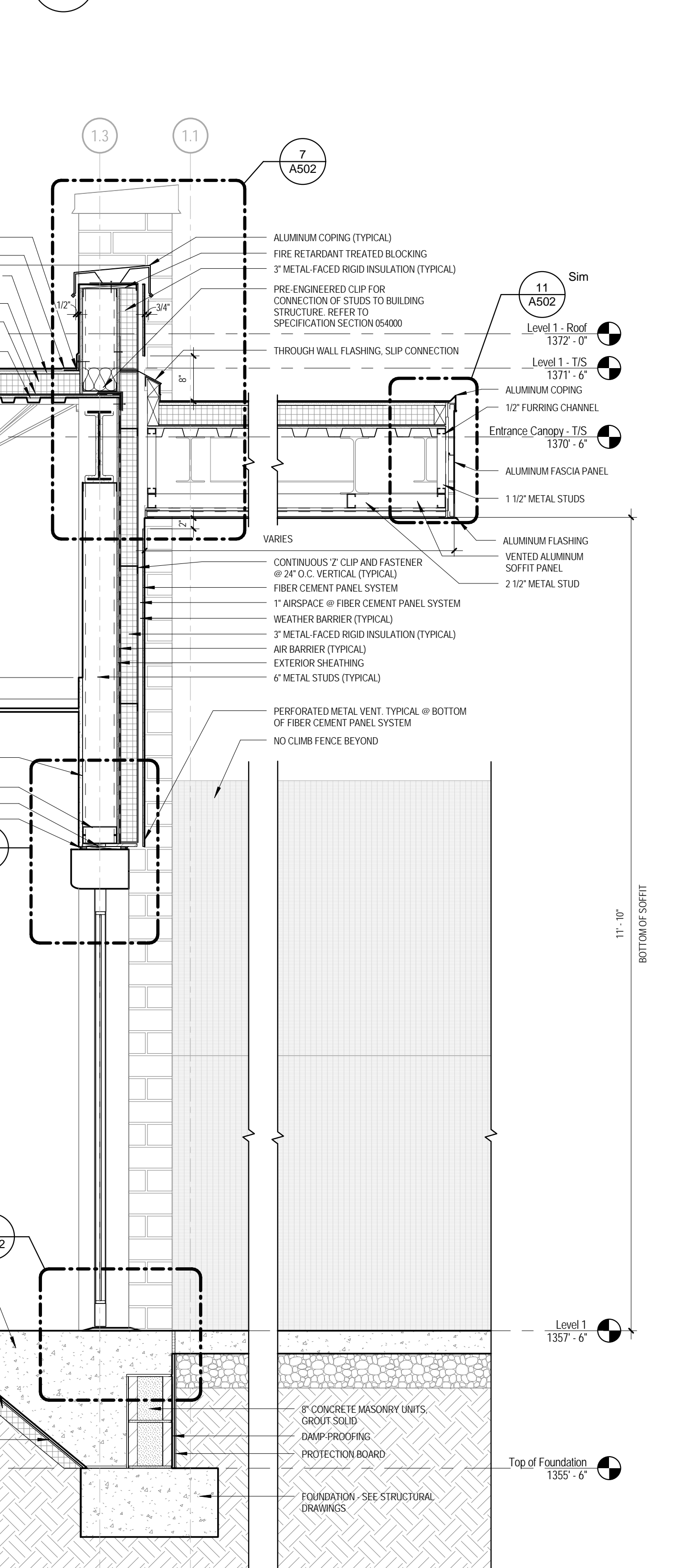
3 Wall Section - 11
 A502 3/4" = 1'-0"



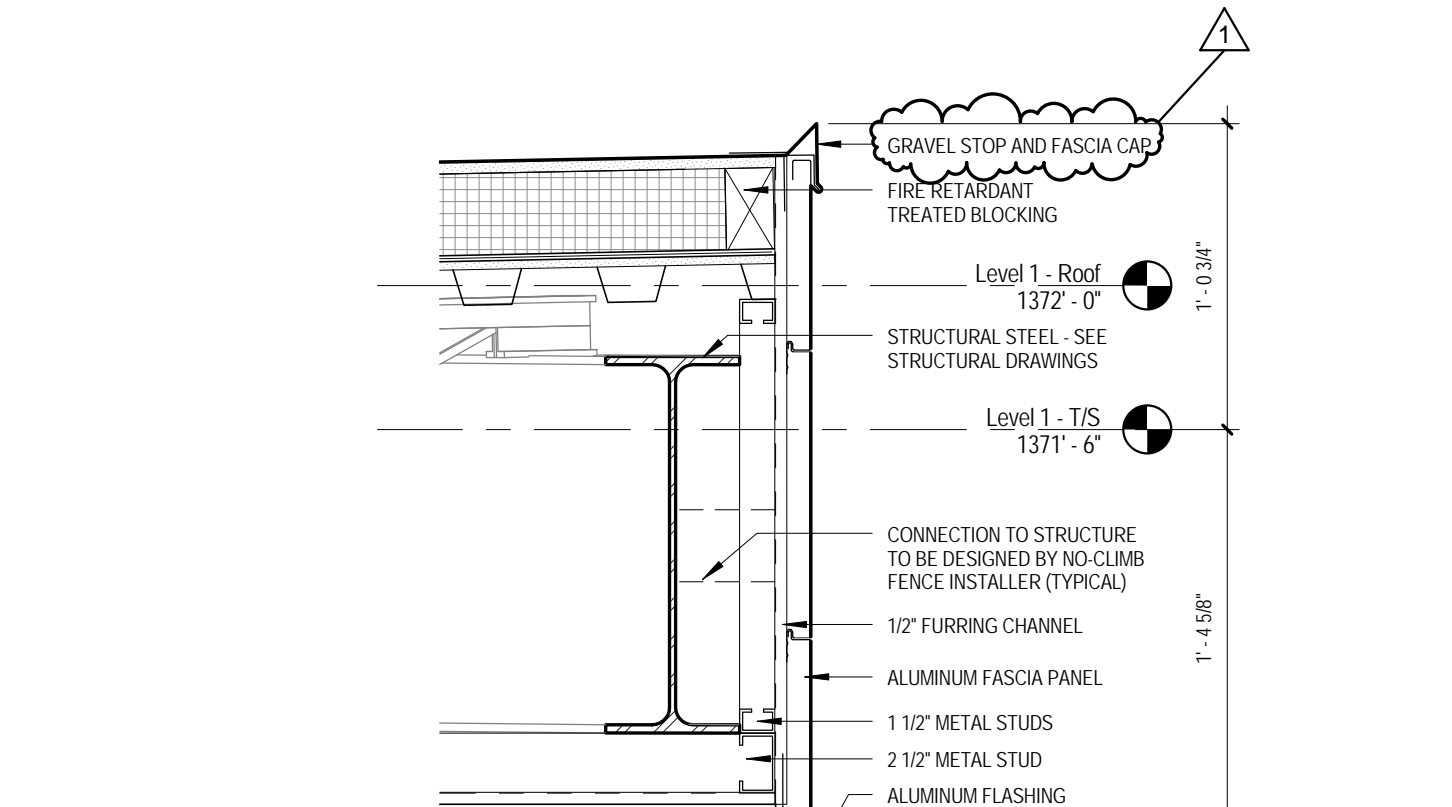
7 Entrance Canopy @ Fiber Cement Panel
 A502 1 1/2" = 1'-0"



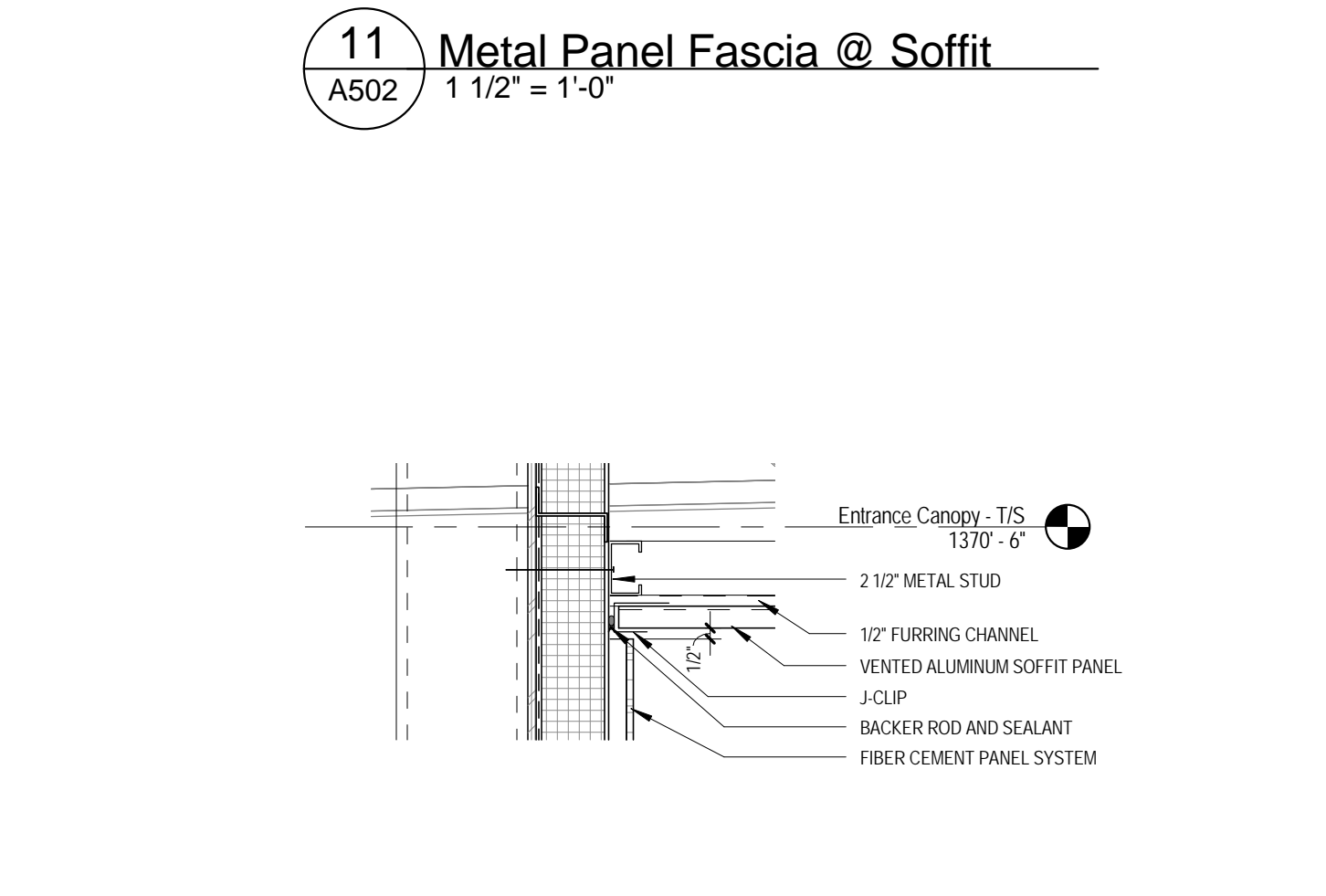
11 Metal Panel Fascia @ Soffit
 A502 1 1/2" = 1'-0"



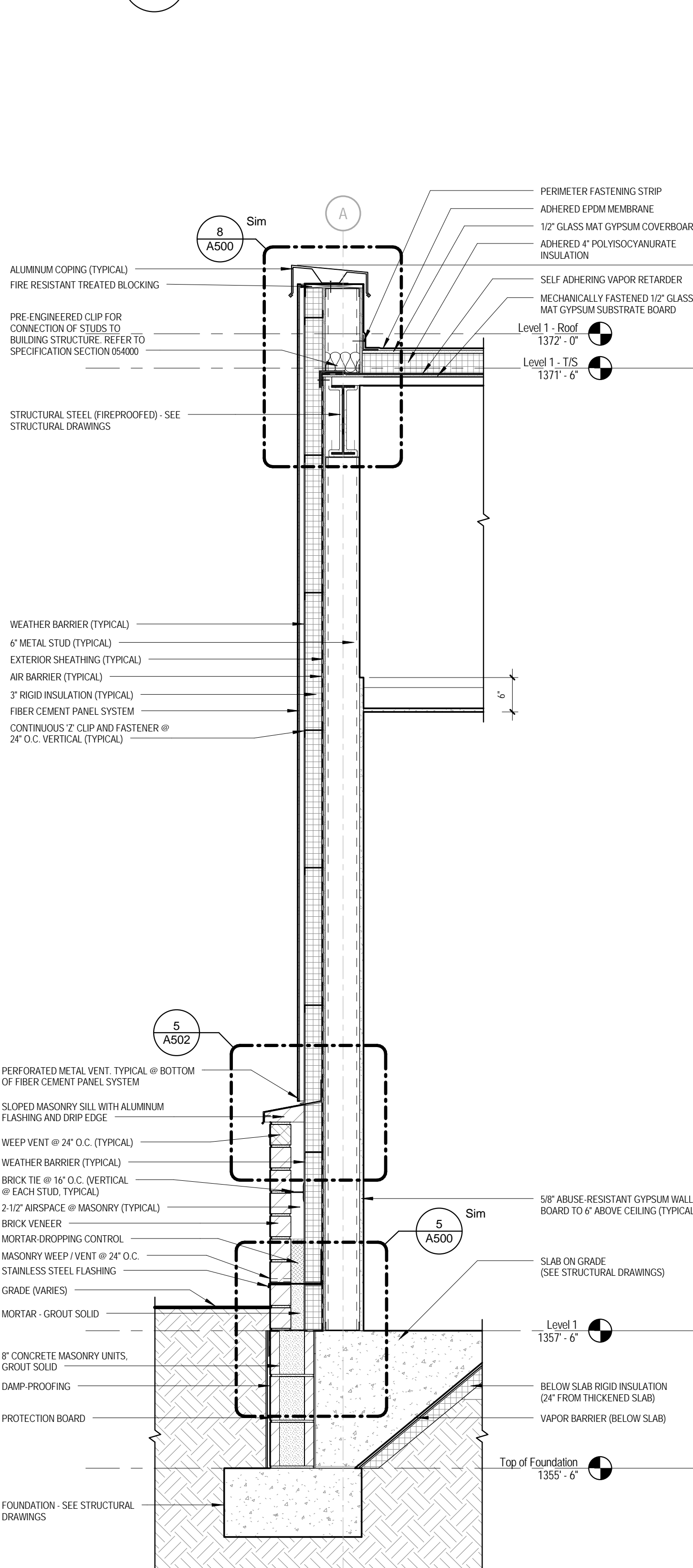
2 Wall Section - 10
 A502 3/4" = 1'-0"



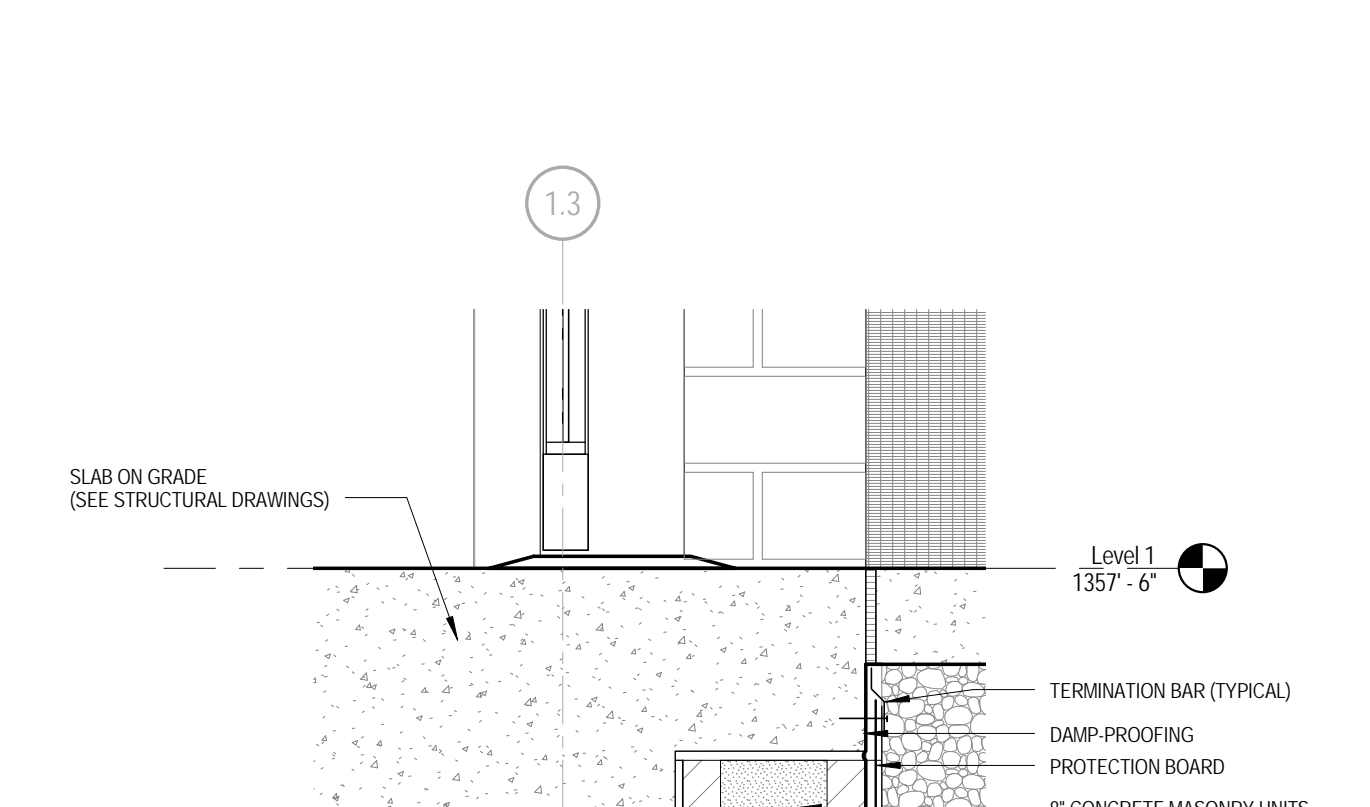
6 Metal Panel Soffit @ Fiber Cement Panel
 A502 1 1/2" = 1'-0"



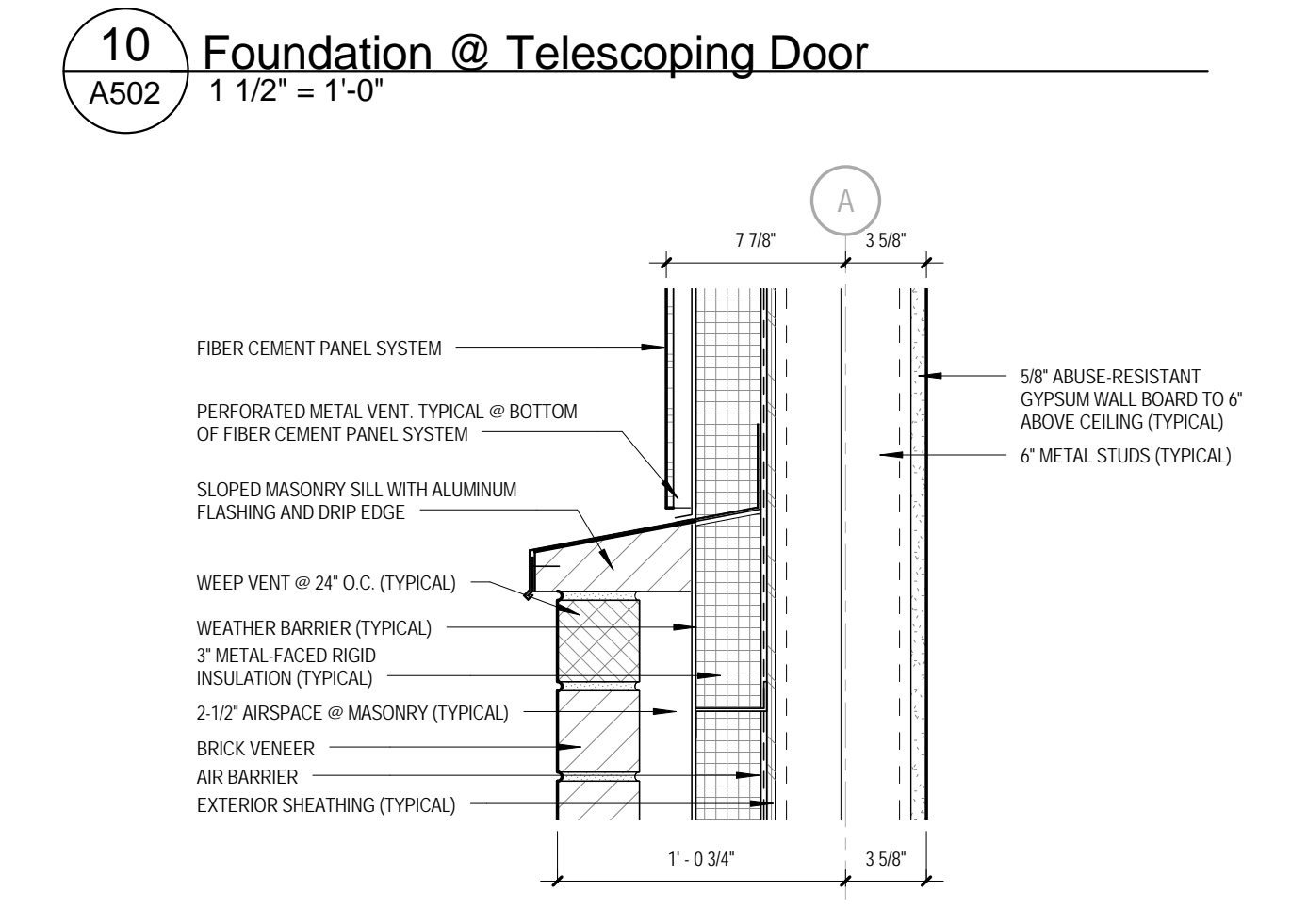
5 Masonry Sill @ Fiber Cement Panel
 A502 1 1/2" = 1'-0"



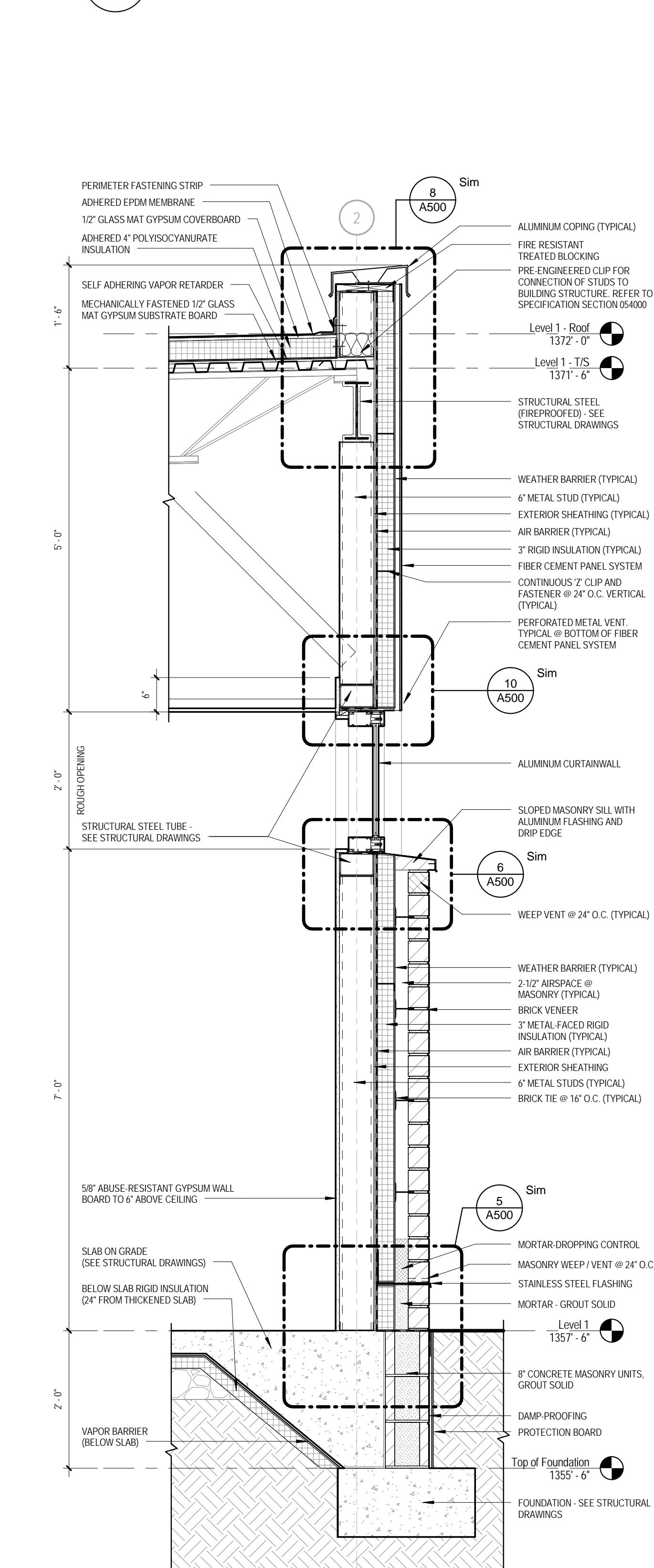
1 Wall Section - 9
 A502 3/4" = 1'-0"



10 Foundation @ Telescoping Door
 A502 1 1/2" = 1'-0"



8 Foundation @ Exterior Slab
 A502 1 1/2" = 1'-0"



1 Wall Section - 9
 A502 3/4" = 1'-0"

Bid Set

No.	Date	Description
01-30-2013	Addendum 4	

Revisions

Date
 14 November 2012

Project Title
 William R. Sharpe
 Hospital
 50 Bed Addition

Drawing Title
 Wall Sections /
 Exterior Details

Project Number
 11-170

Drawing Number
 A502

936 Sharpe Hospital Road
 Weston, WV 26452-8550

2/8/2013 4:34:18 PM