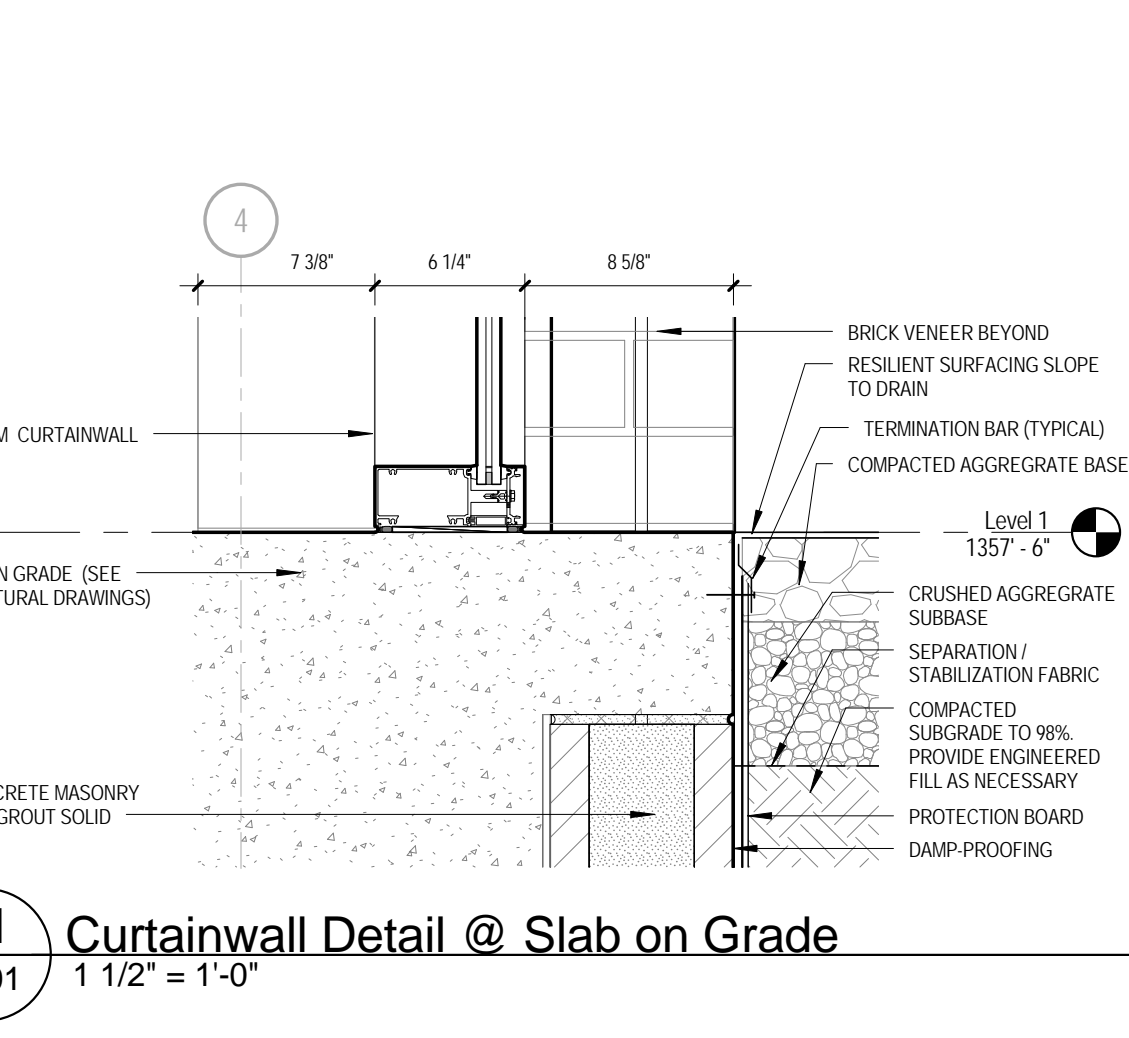
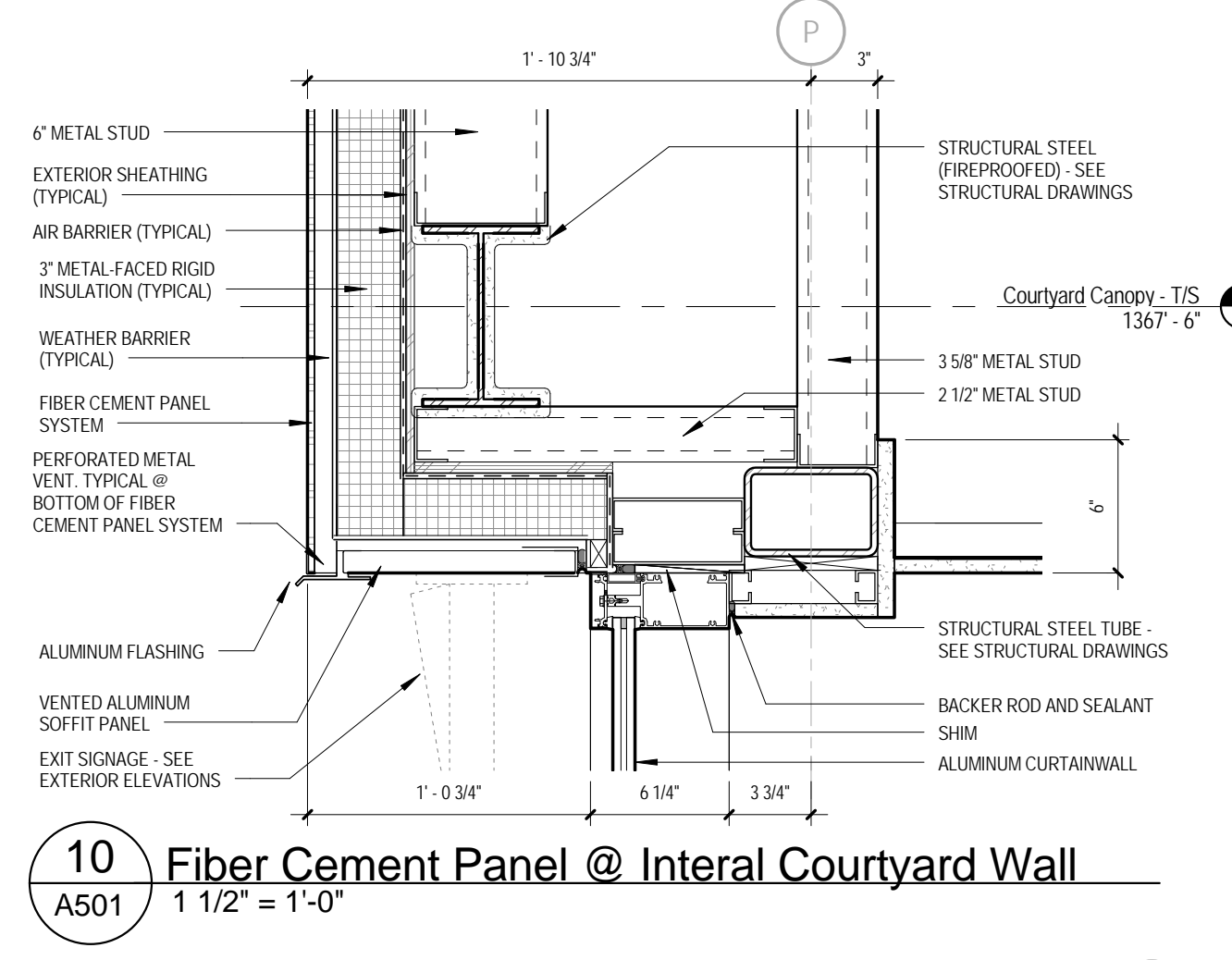


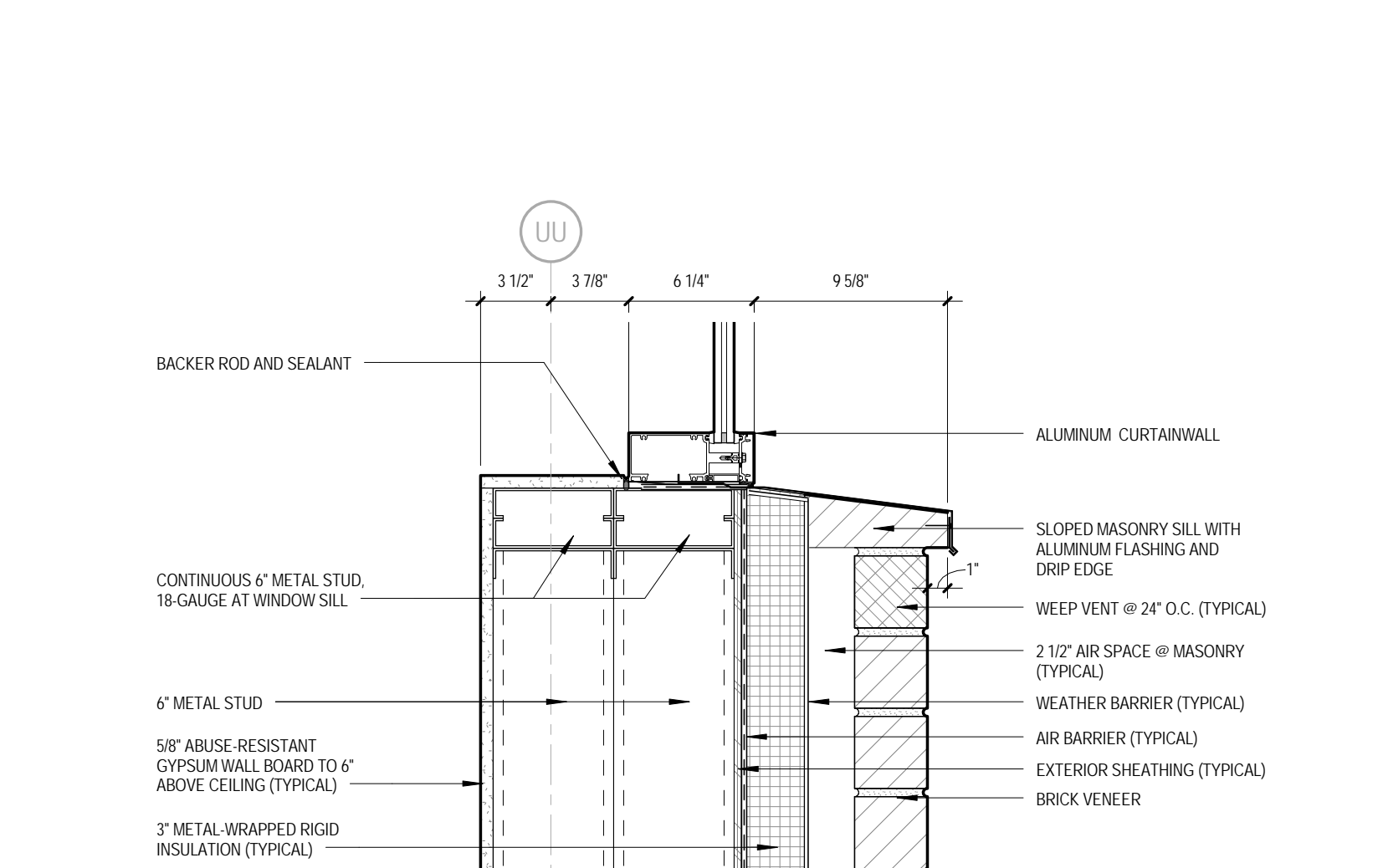
**12** Parapet Detail @ Fiber Cement Panel - 2  
 A501 1 1/2" = 1'-0"



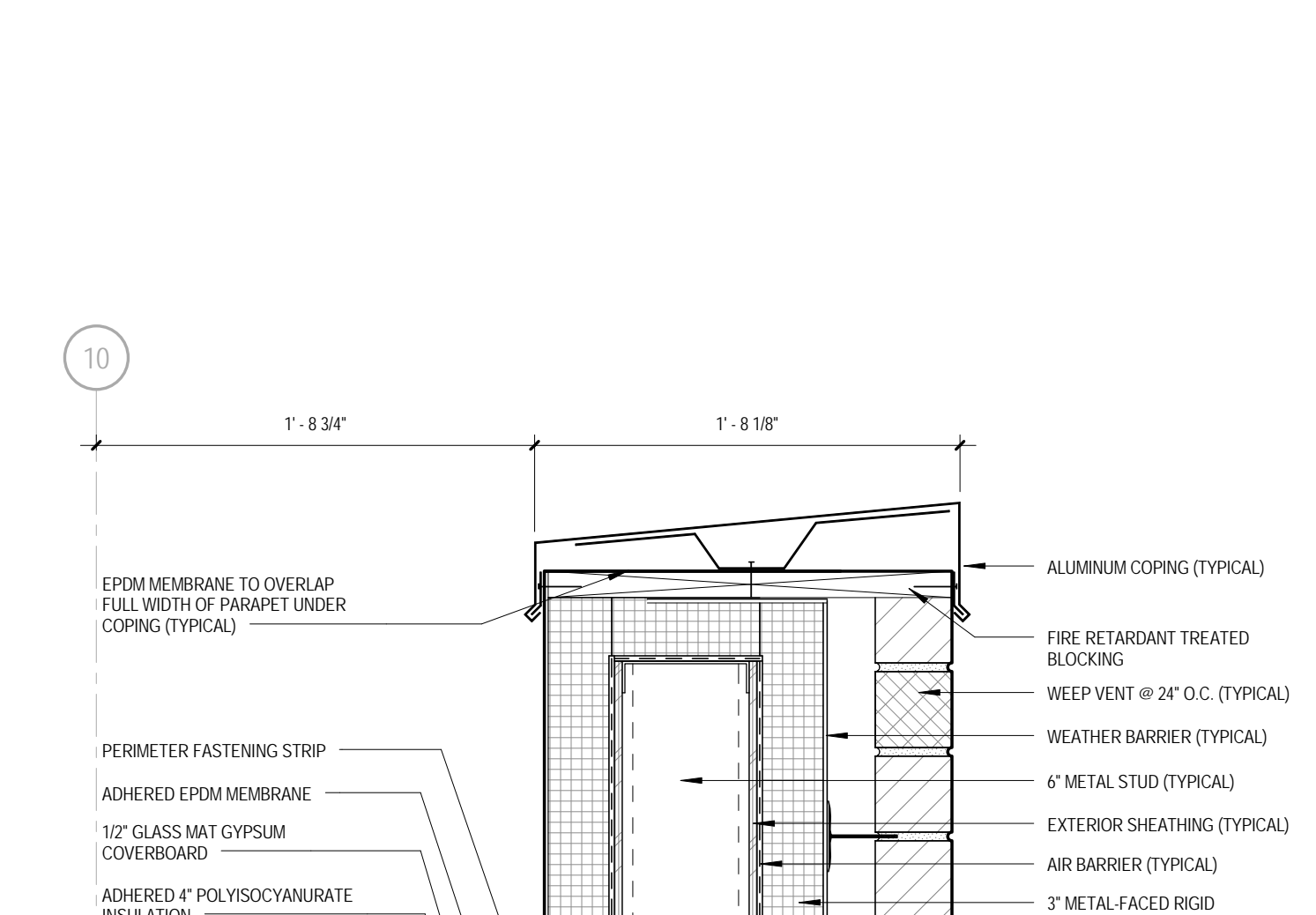
**11** Curtainwall Detail @ Slab on Grade  
 A501 1 1/2" = 1'-0"



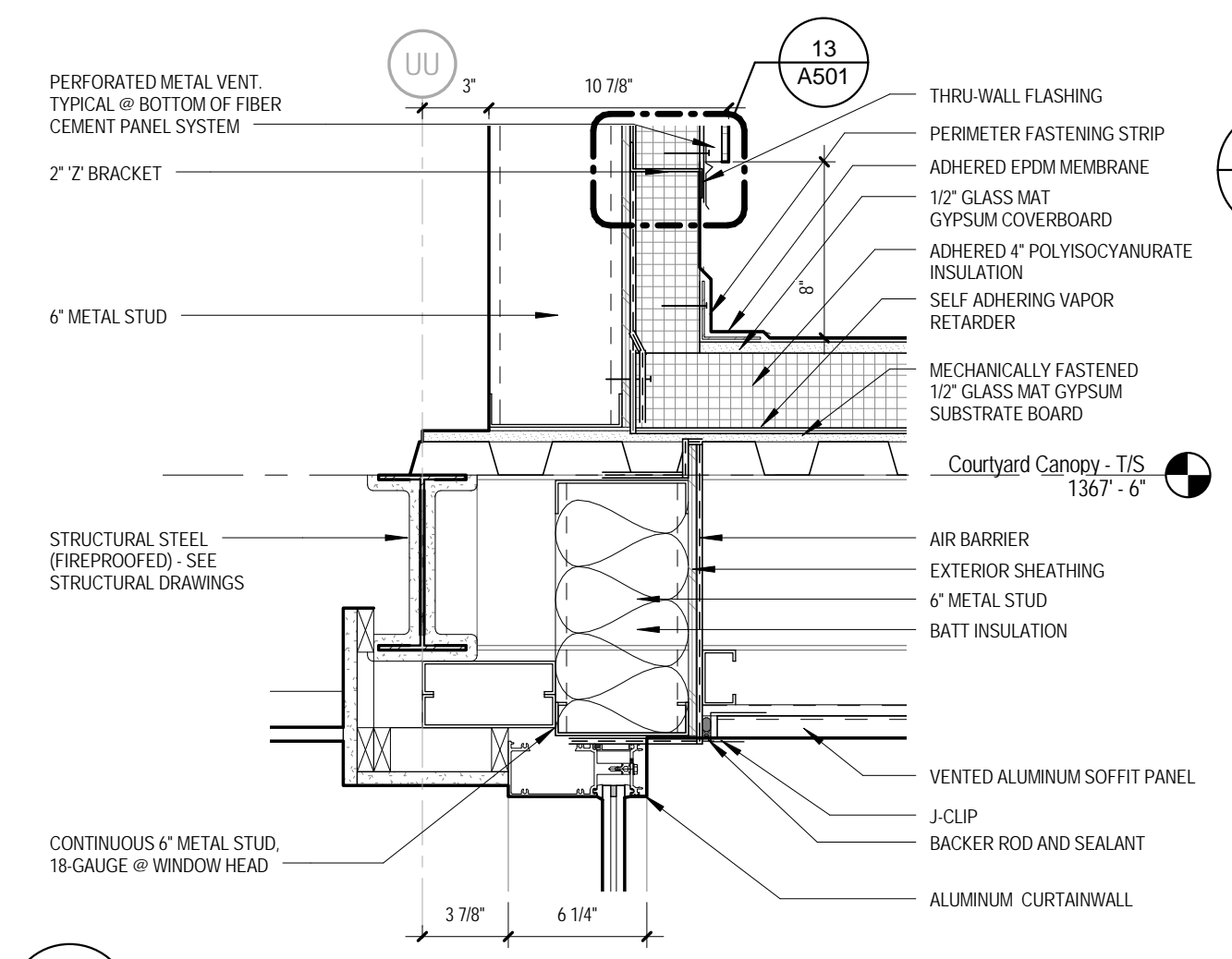
**10** Fiber Cement Panel @ Internal Courtyard Wall  
 A501 1 1/2" = 1'-0"



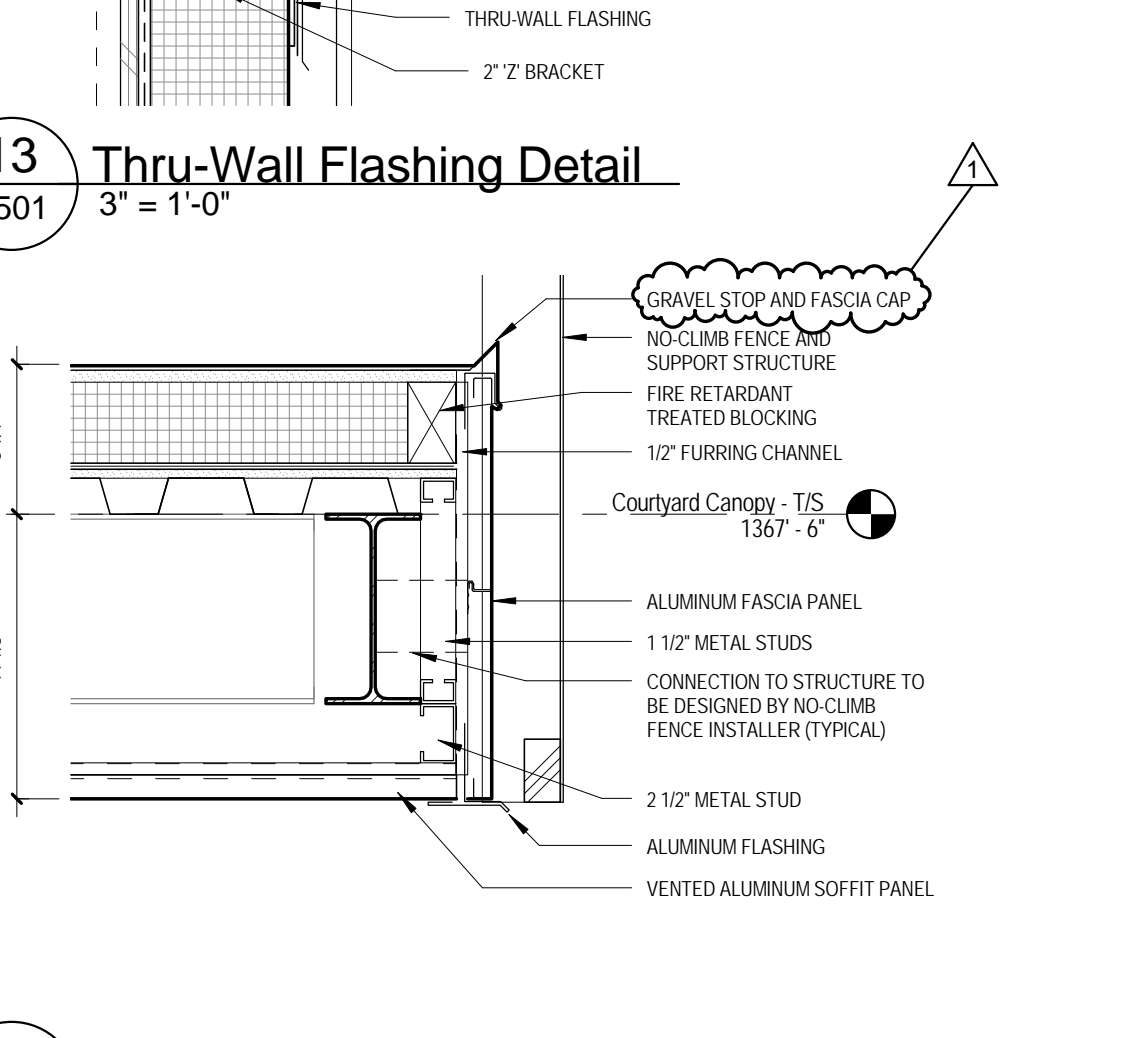
**6** Masonry Base @ Curtainwall  
 A501 1 1/2" = 1'-0"



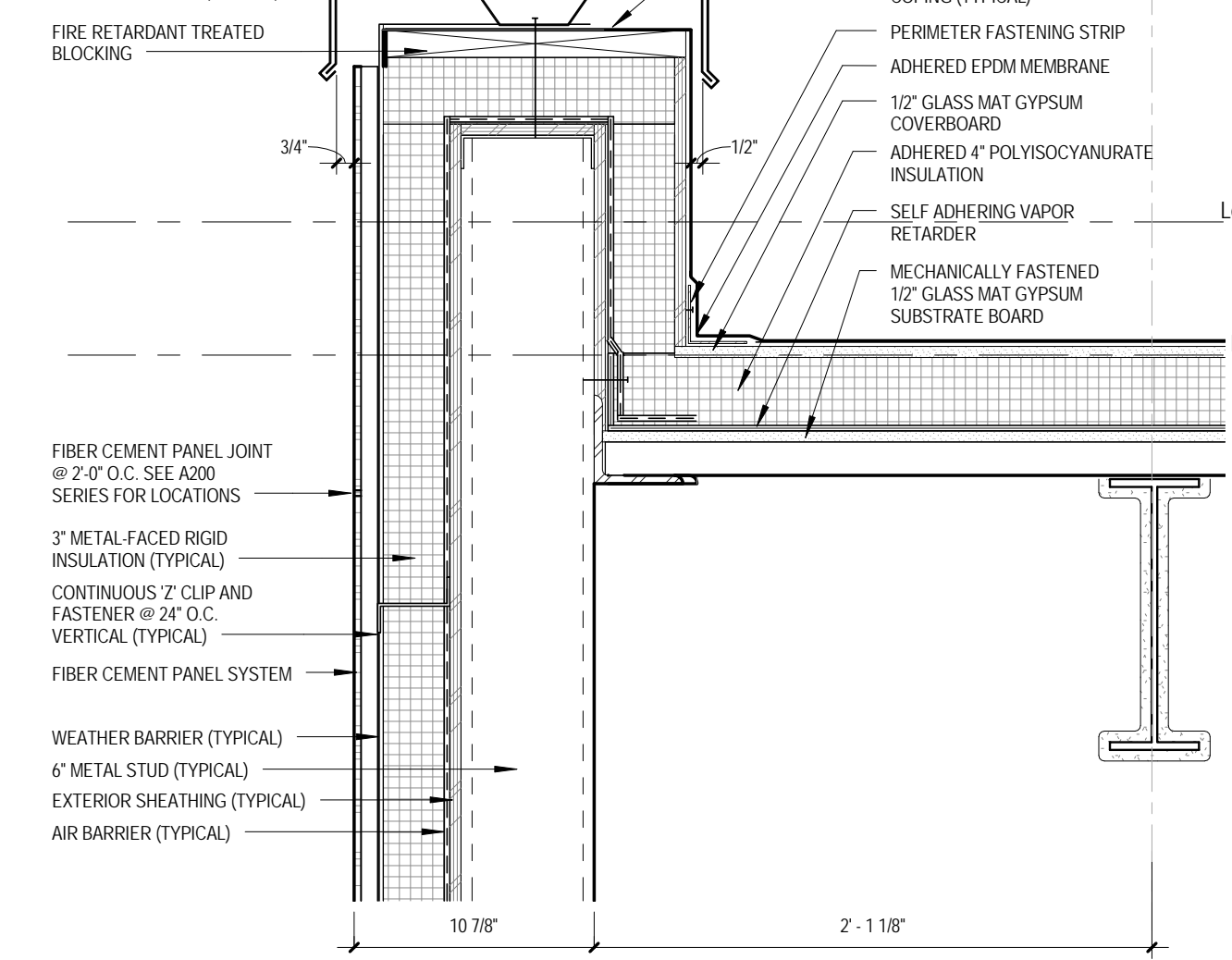
**5** Parapet Detail @ Masonry - 2  
 A501 1 1/2" = 1'-0"



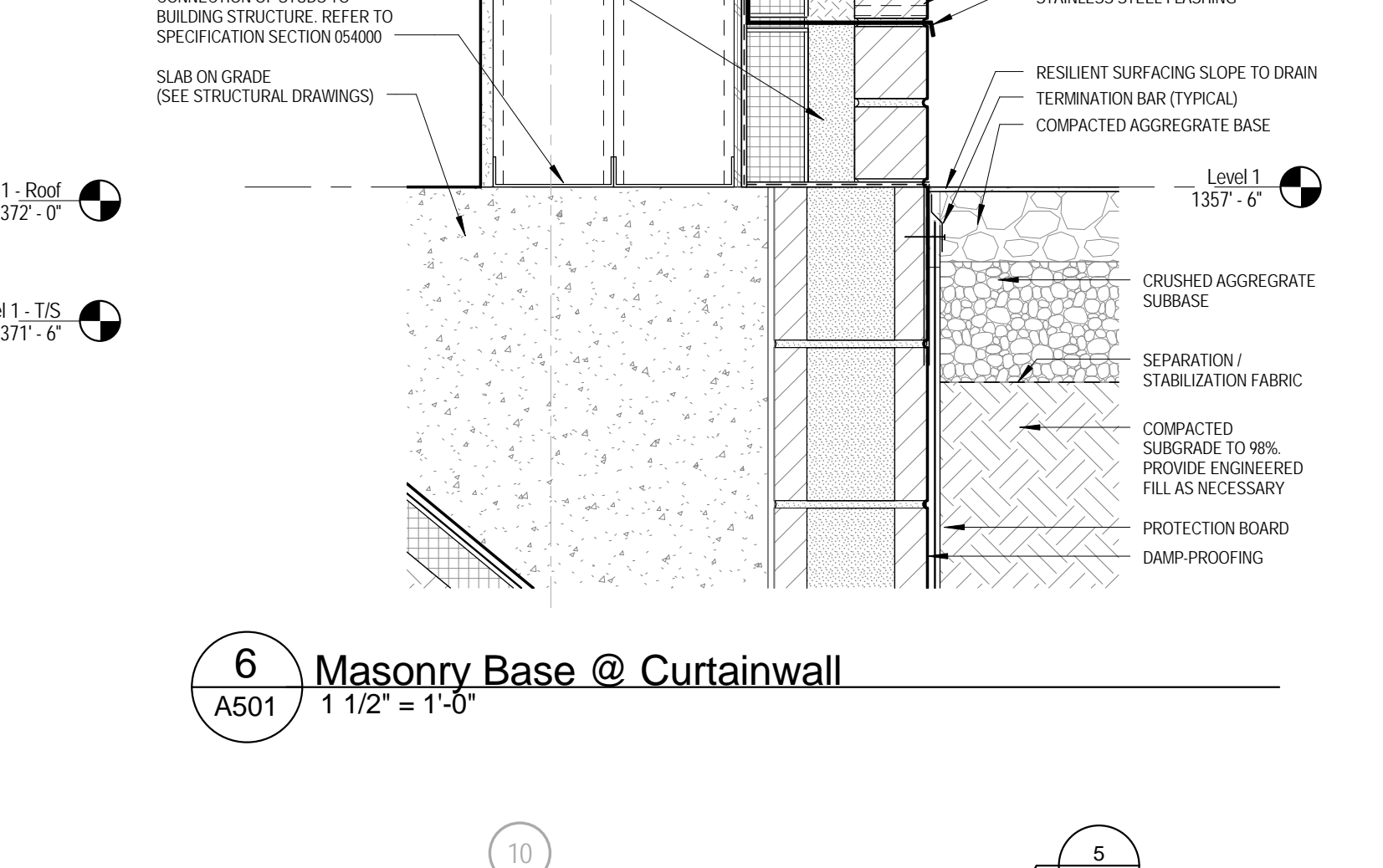
**13** Thru-Wall Flashing Detail  
 A501 3" = 1'-0"



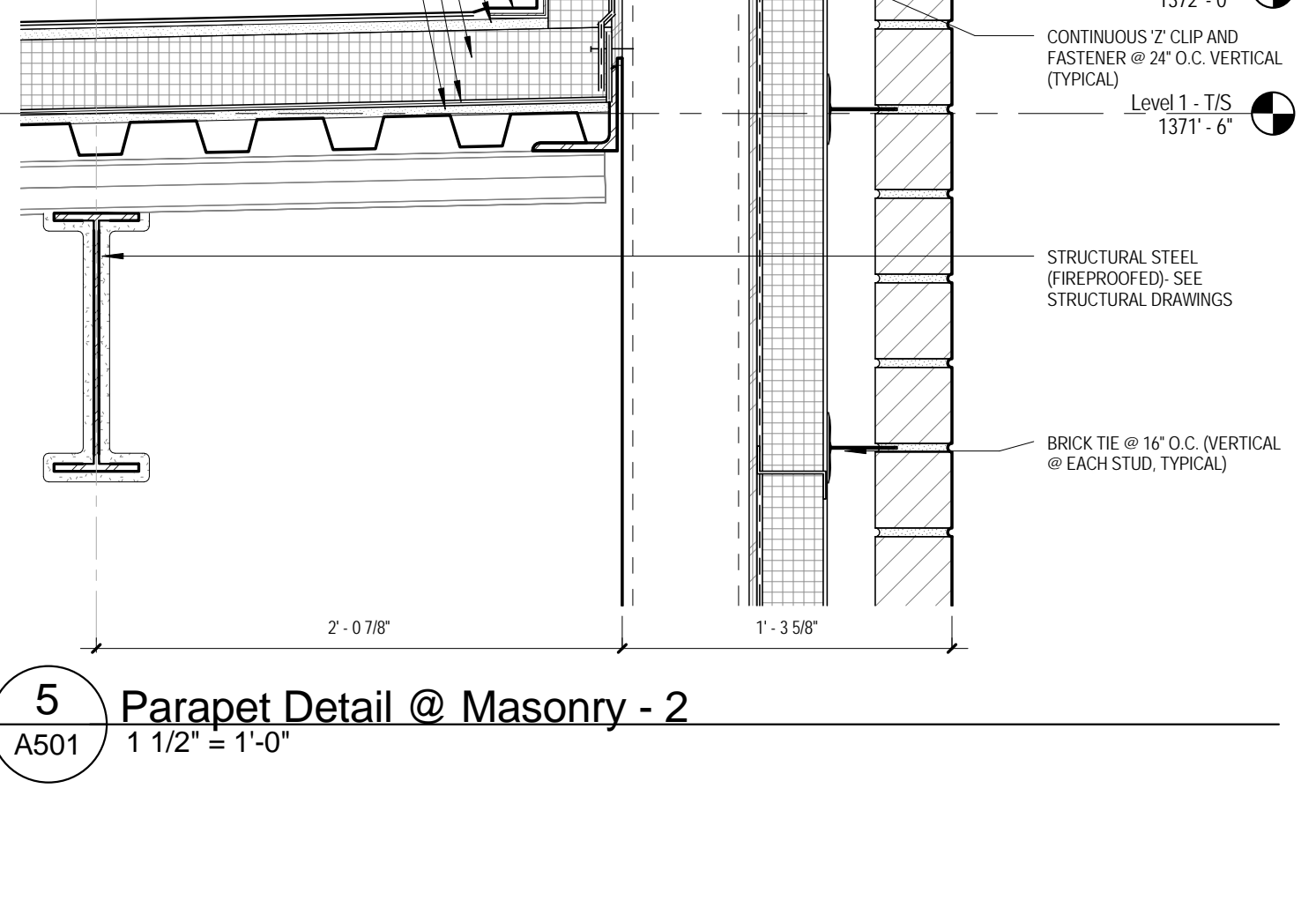
**8** Metal Panel Fascia @ No-Climb Fence  
 A501 1 1/2" = 1'-0"



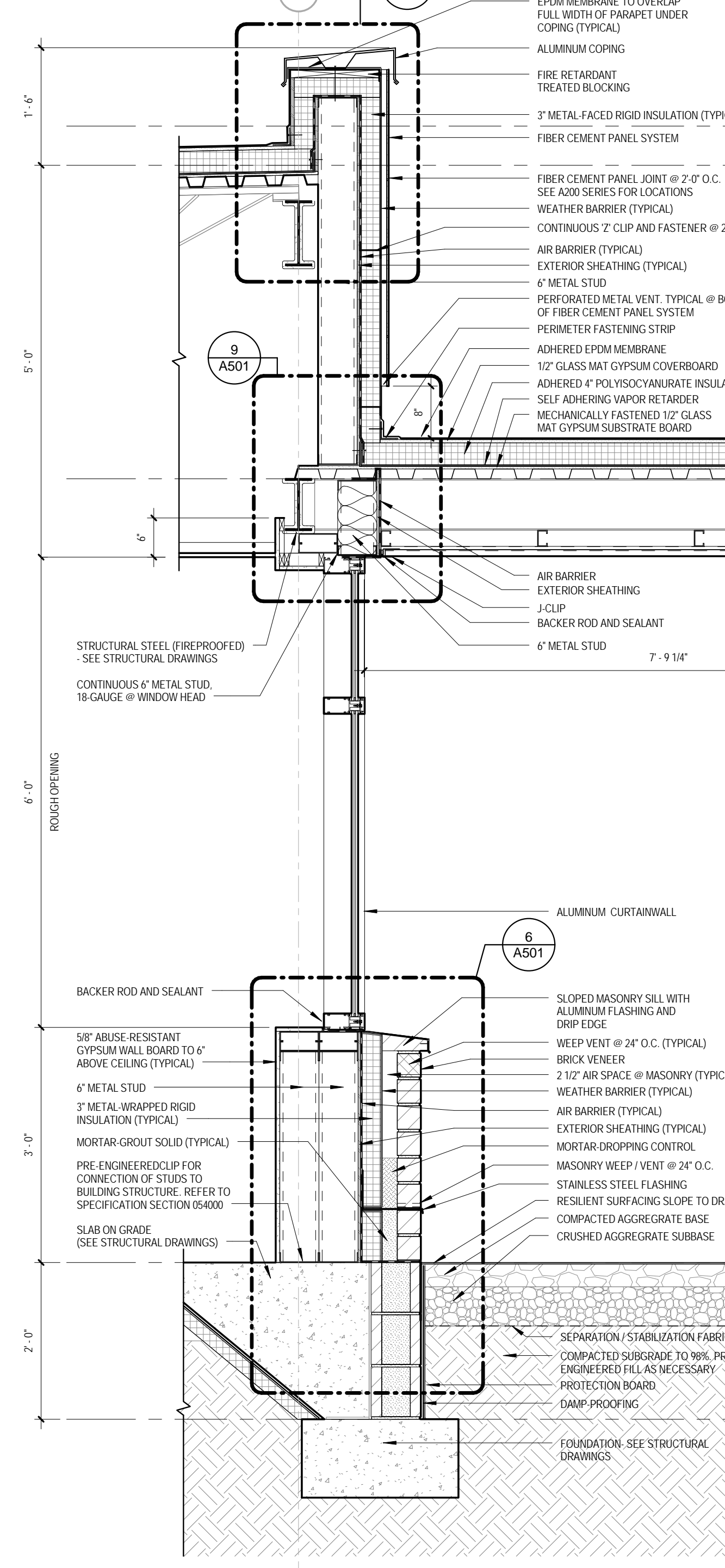
**7** Parapet Detail @ Fiber Cement Panel - 3  
 A501 1 1/2" = 1'-0"



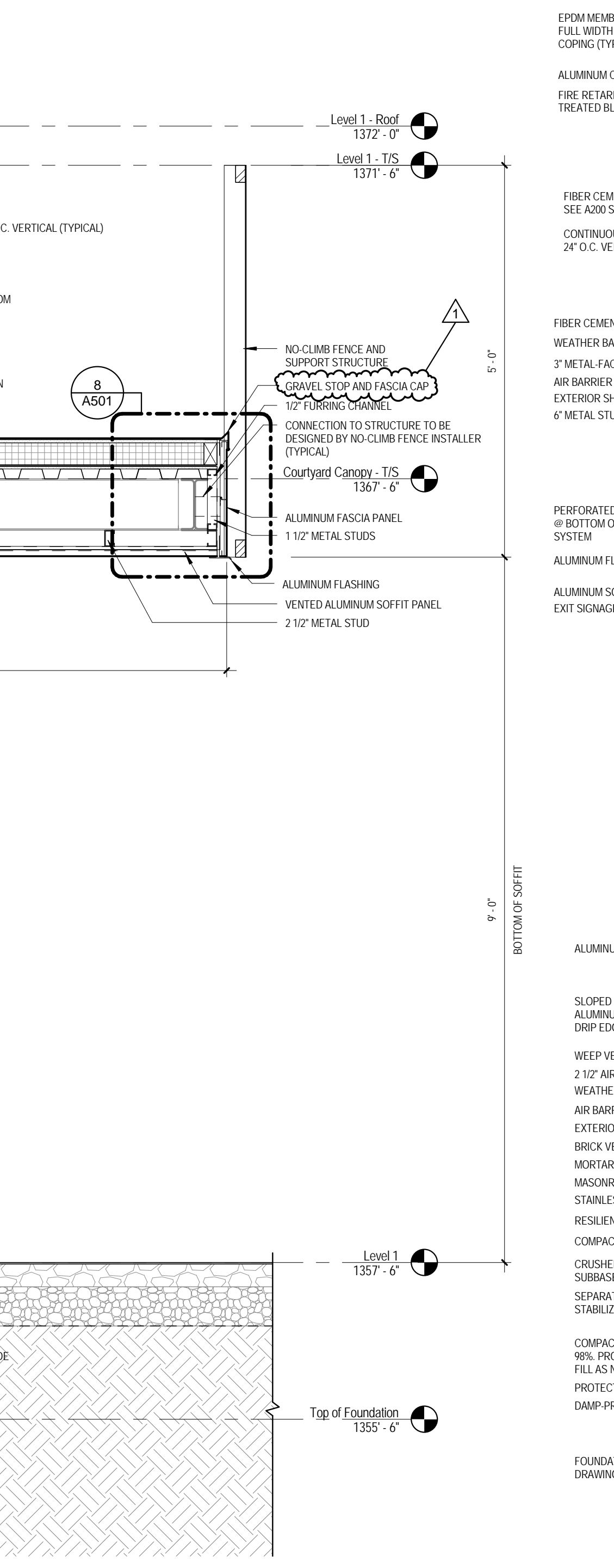
**9** Metal Panel Soffit @ Curtainwall Head  
 A501 1 1/2" = 1'-0"



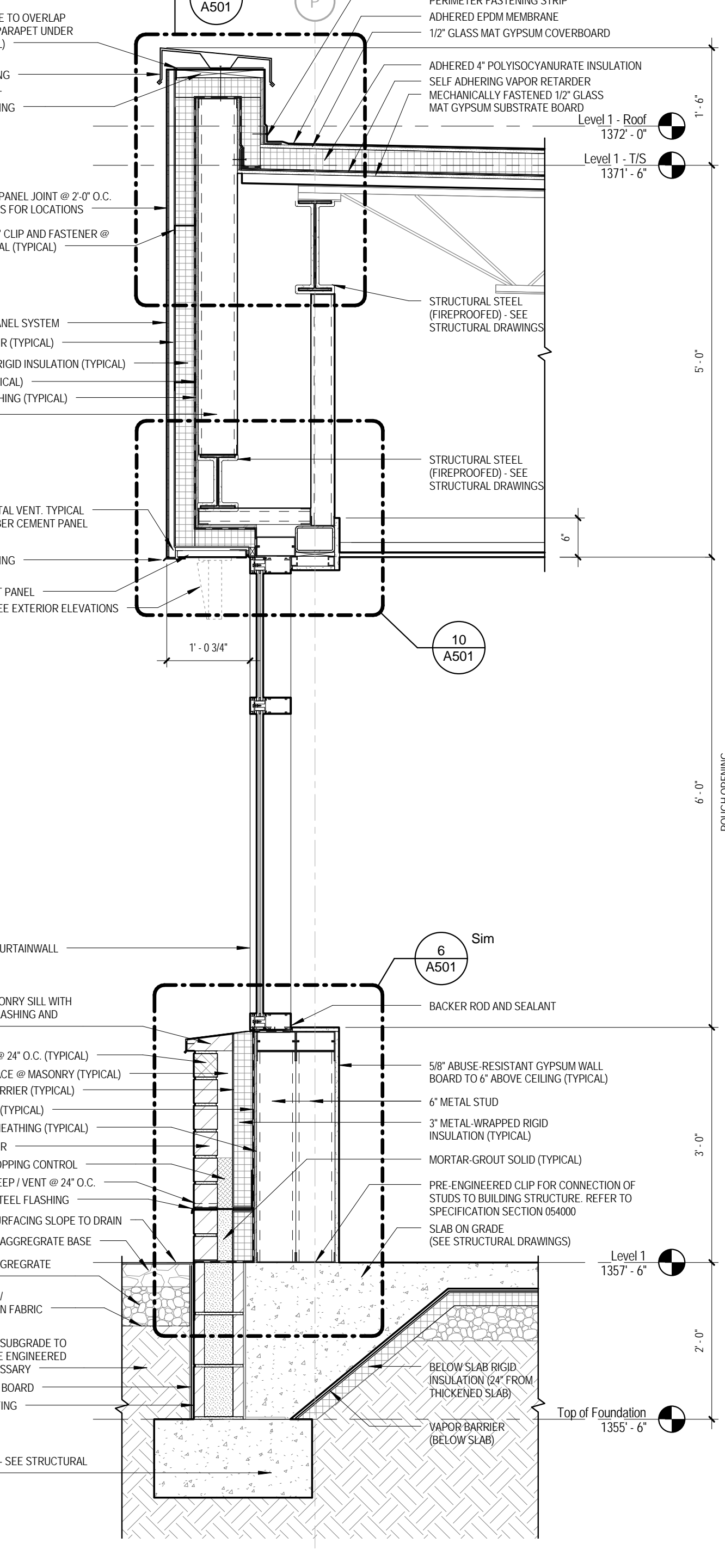
**4** Wall Section - 8  
 A501 3/4" = 1'-0"



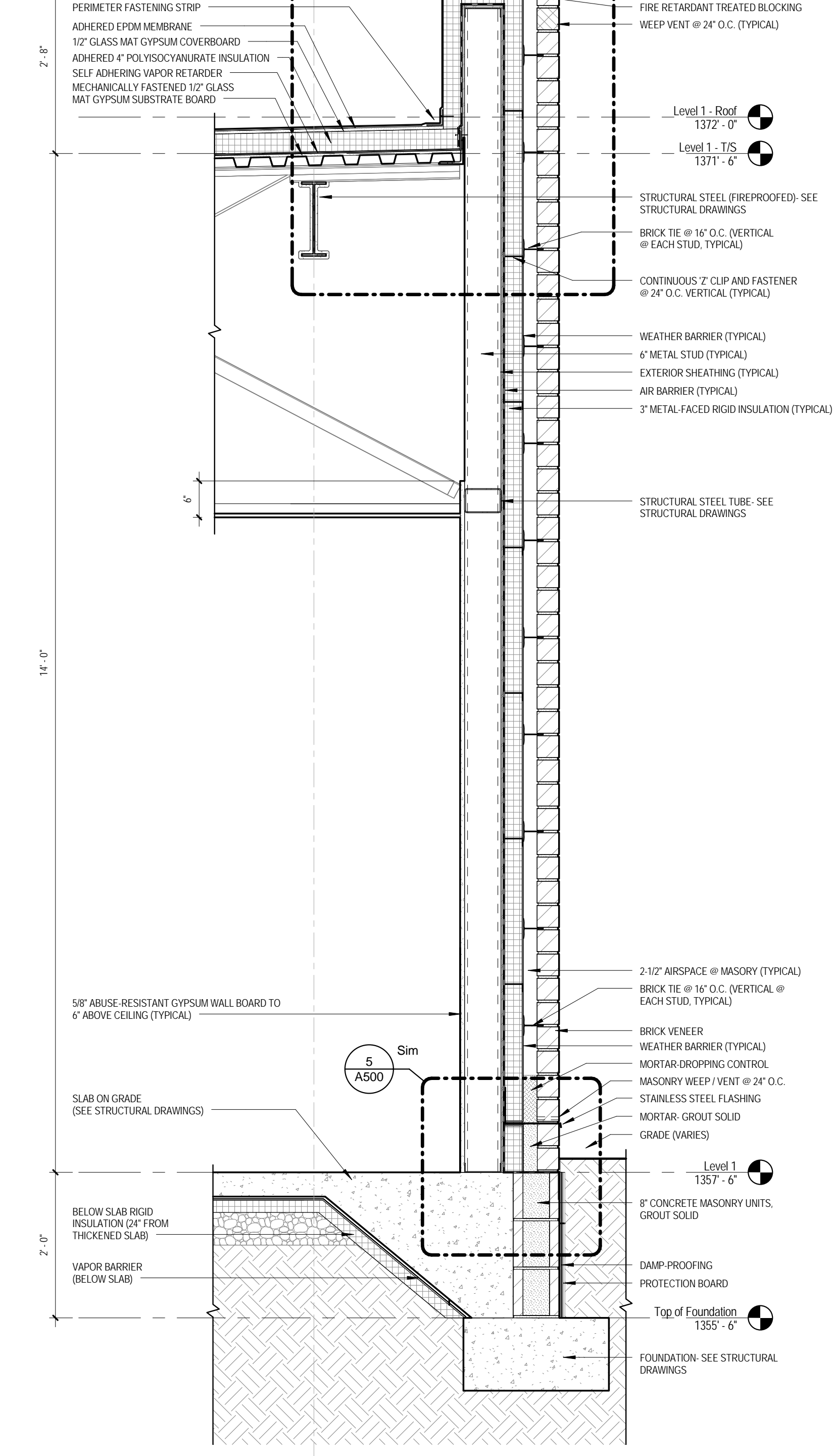
**3** Wall Section - 7  
 A501 3/4" = 1'-0"



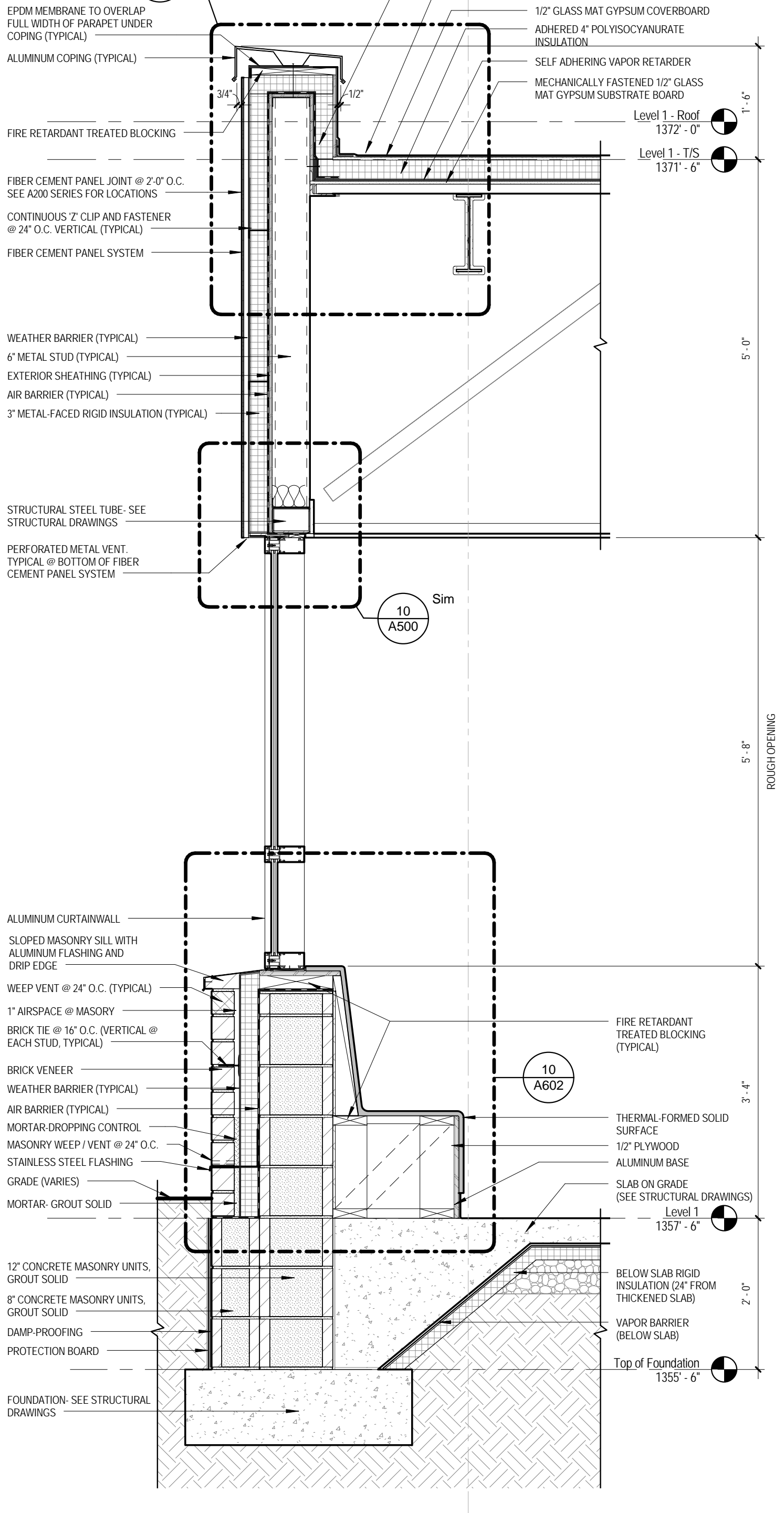
**2** Wall Section - 6  
 A501 3/4" = 1'-0"



**1** Wall Section - 5  
 A501 3/4" = 1'-0"



**10** Masonry Base @ Curtainwall  
 A500 3/4" = 1'-0"



**10** Masonry Base @ Curtainwall  
 A502 3/4" = 1'-0"

**Bid Set**

No.	Date	Description
01-30-2013	Addendum 4	

**Revisions**

**Date**  
 14 November 2012

**Project Title**  
 William R. Sharpe  
 Hospital  
 50 Bed Addition

**Drawing Title**  
 Wall Sections /  
 Exterior Details

**Project Number**  
 11-170

**Drawing Number**  
 A501

936 Sharpe Hospital Road  
 Weston, WV 26452-8550

28/2013 4:35:35 PM