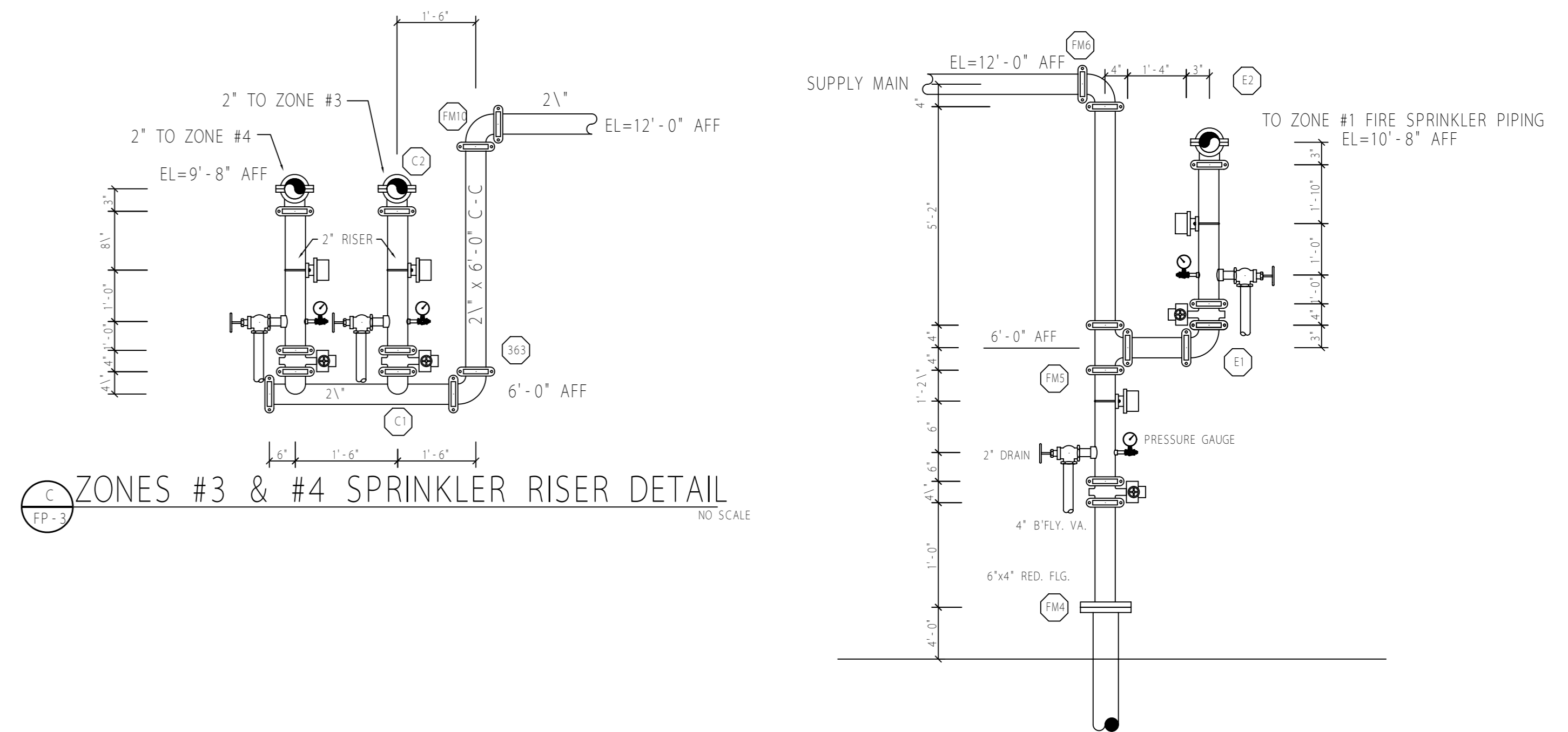
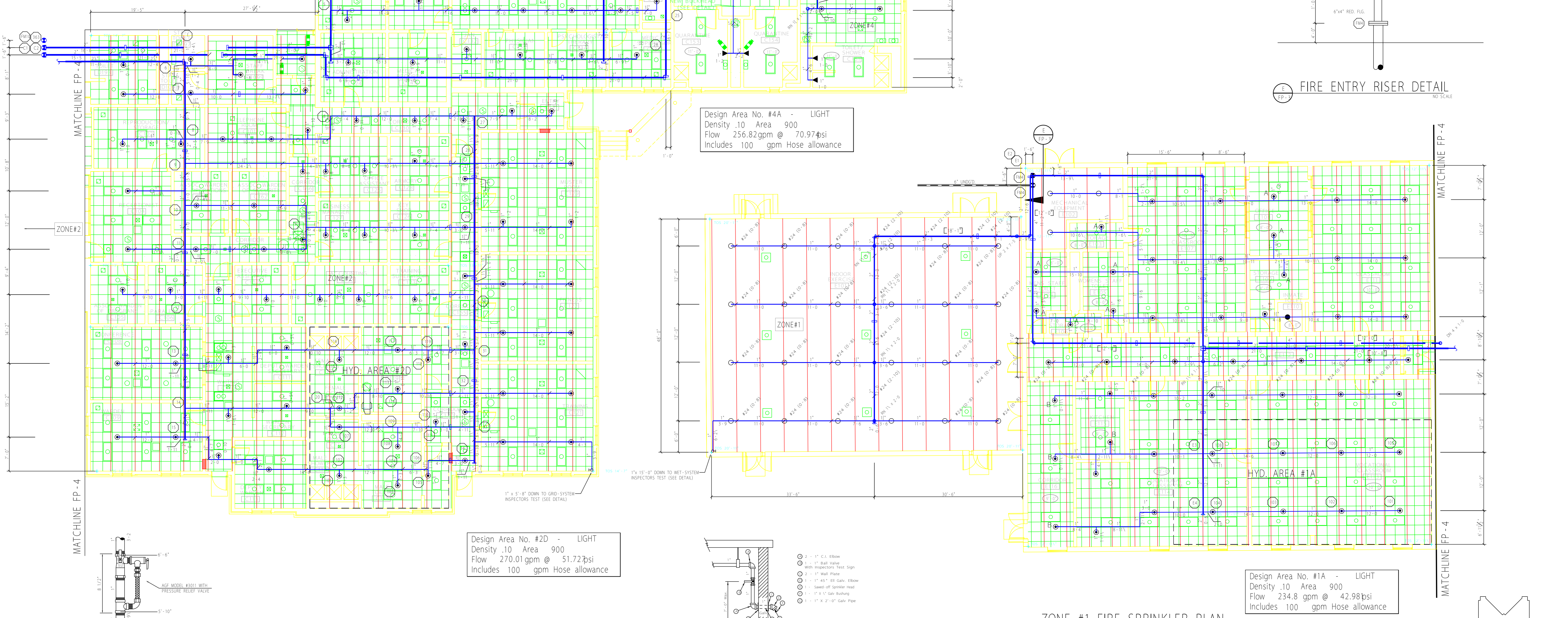
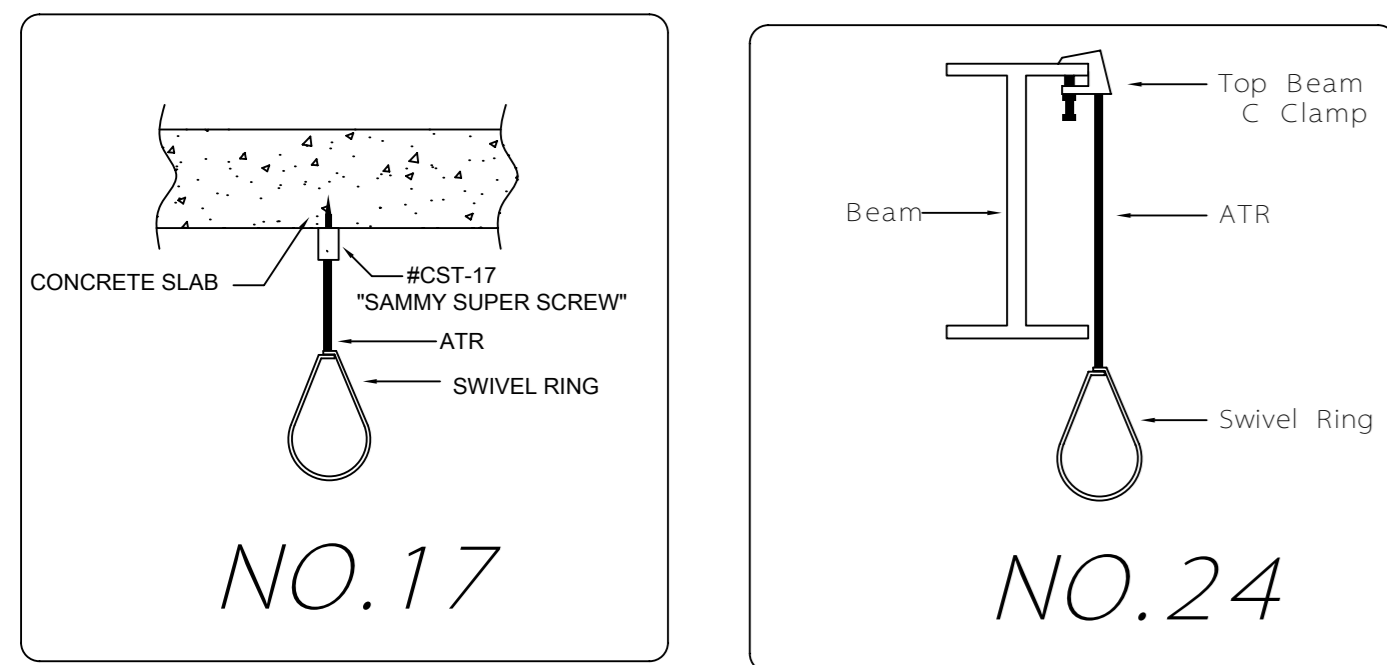


BOTTOM OF CONCRETE SLAB = 11'-0" ALL HANGERS = TYPE #17 x 1'-4"



Design Area No. #4A - LIGHT
Density .10 Area 900
Flow 256.82 gpm @ 70.97 psi
Includes 100 gpm Hose allowance

Design Area No. #2D - LIGHT
Density .10 Area 900
Flow 270.01 gpm @ 51.72 psi
Includes 100 gpm Hose allowance

Design Area No. #1A - LIGHT
Density .10 Area 900
Flow 234.8 gpm @ 42.98 psi
Includes 100 gpm Hose allowance

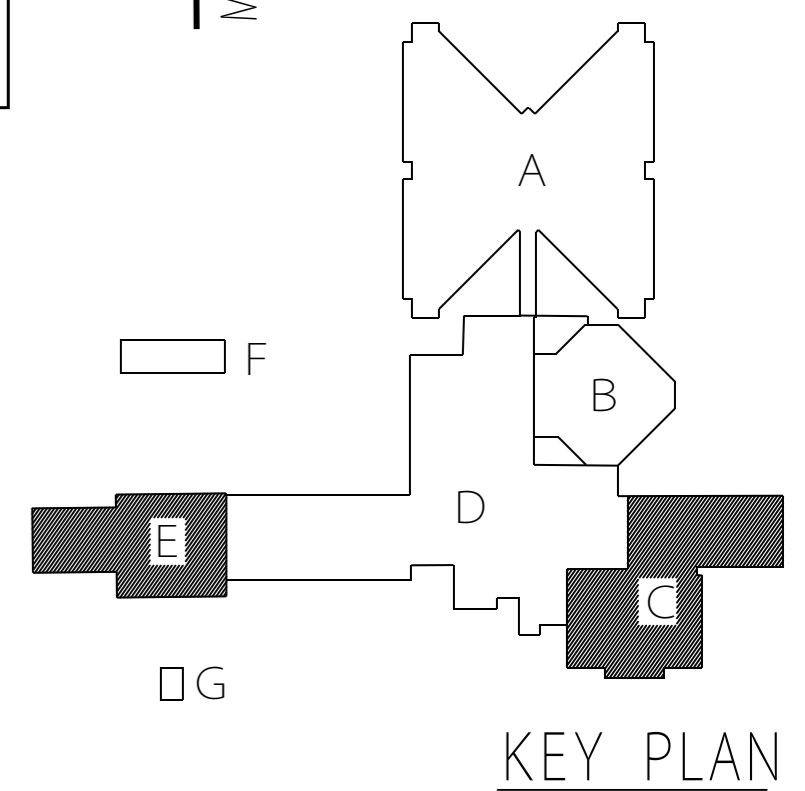
ZONES #2, #3, & #4 FIRE SPRINKLER PLAN

ZONE #1 FIRE SPRINKLER PLAN

TOP OF STEEL AS NOTED ON PLAN
CEILING HEIGHT AS NOTED ON PLAN
ELEVATION OF PIPE = 9'-8" A.F.F. (U.N.O.)
ALL HANGERS = TYPE #24 x 4'-11" (U.N.O.)
ALL DROPS = 1" x 0'-5"

TOP OF STEEL AS NOTED ON PLAN
CEILING HEIGHT AS NOTED ON PLAN
ELEVATION OF PIPE = 10'-8" A.F.F. (U.N.O.)
ALL HANGERS = TYPE #24 x 2'-3" (U.N.O.)
ALL DROPS = 1" x 0'-5" (U.N.O. SEE DROP LEGEND)

DROP LEGEND		
SYMB.	CEILING HEIGHT	DROP LENGTH
A	8'-0"	1"x2'-5"
B	9'-0"	1"x1'-5"



NFPA 13 and State Fire Codes require the building owner to be responsible for maintaining the sprinkler system and keeping the system in good operating condition. With the influx of new and specific fire sprinkler styles in the market the sprinkler heads in this building may be a combination of standard response, quick response, or residential styles, and could be either a standard or extended coverage spray pattern. Care should be exercised during the replacement of any sprinkler head to be assured the replacement sprinkler is identical to the original sprinkler head. Head requirements to be considered include, but are not limited to, make, model, orifice size, temperature, pressure requirements, spray pattern, and maximum spacing limitations.

NOTE: PIPE-END PREPARATION MARKS DO NOT INCLUDE FITTING TAKE-OUTS; ALL PIPE AND HANGERS ARE SHOWN CENTER-TO-CENTER ONLY. PIPE FITTING TAKE-OUTS WILL BE PERFORMED BY COMPUTER STOCKING. SEE TITLEBLOCK FOR WIRE AND FITTING SIZES.

Building North

Note:
To prevent freezing of pipe in sprinkler system others shall provide sufficient heat to maintain system above 40° F, unless an anti-freeze loop or dry pipe system is installed.

All welded fittings to be shop welded and in accordance with NFPA Pamphlet 13.

Sprinkler foreman to locate any high temp. heads not shown on shop drawing.

This drawing and its design are the property of Brewer and Company, Inc., P.O. Box 3108, Charleston, W. Va. and are not to be copied or used, directly or indirectly, by anyone whatsoever without the written consent of Brewer and Company of W. Va.

General Notes

PIPE: 1" THRU 2" - THREADED THINWALL (A-135 OR A-795F)
2" & LARGER SCH40 A135 THINWALL W/ ROLL GROOVED ENDS

FITTINGS: 1" - 2" THREADED FITTINGS - BLACK STANDARD WEIGHT CAST IRON
2" & LARGER REZEED LINE OPENINGS & FIRELOCK MECH. FITTINGS

BLDG. CONSTRUCTION: NON-COMBUSTIBLE STEEL I BEAMS AND BAR JOISTS

SPKR LOCATION: AS REQUIRED BY FIRE CODE, BUT NOT NECESSARILY CENTER OF CEILING

The following are to be provided or installed by:

SYMBOL	DESCRIPTION	SYMBOL	DESCRIPTION
(A)	PAINTING OF PIPE - IF DESIRED	(O)	PIPE TO BOTTOM OF STEEL OR CONC. DECK OR BOTTOM OF WOOD JOIST
(B)	PIPE IDENTIFICATION MARKERS	(P)	PIPE TO BOTTOM OF STEEL BEAM OR METAL FURLEIN
(C)	GRID SYSTEM PRESSURE RELIEF VALVE	(L)	HANGER ROD LENGTH
(D)	SPRINKLER CABINET WITH WRENCH MAIN DRAIN/TEST VALVE & GAGES	(A)	PIPE ABOVE FINISHED FLOOR
(E)	EXISTING PIPE REMOVAL	(Z)	Z-PURLIN CLAMP, MT ROD & RING
(F)	EXISTING SPRINKLER RELOCATION	(R)	TRAPEZE:
(G)	HOUSEKEEPING PAD		
(H)	SEWER DRAIN CONNECTIONS		
(I)	VALVE FIT MATERIALS		
(J)	VALVE FIT		
(K)	ELECTRICAL WIRING AND/OR ALARM SYSTEM		
(L)	ELECTRICAL DETECTION SYSTEM		
(M)	HEATED VALVE ENCLOSURE (DRY SYSTEM)		
(N)	AIR SUPPLY		
(O)	AIR MAINTENANCE DEVICE		

Legend	Hangers	Sprinklers this drawing:	Date	Revisions
(O) 1" OF PIPE TO BOTTOM OF STEEL OR CONC. DECK OR BOTTOM OF WOOD JOIST	24 MT ROD, RING & TOP BM CLAMP W/LOCK NUT	SYMBOL	TEMP.	11/2000
(P) 1" OF PIPE TO BOTTOM OF STEEL BEAM OR METAL FURLEIN	58/SW MT ROD, RING, SIDE-BM BRACKET & BOLT	UPRIGHT OR PENDANT	5.6	Completed Building C.
(L) HANGER ROD LENGTH	12 MT ROD, RING & EXP. CASE	RELIABLE FTR BRONZE UPRIGHT	5.6	CHANGED ZONE CONFIGURATION
(A) PIPE ABOVE FINISHED FLOOR	10 COACH SCREW ROD OR SUPERSCREW W/ROD & RING	RELIABLE ZX-OR-INST CHROME PENDANT	5.6	
(Z) Z-PURLIN CLAMP, MT ROD & RING	22 Z-PURLIN CLAMP, MT ROD & RING	RELIABLE ZX-OR-INST CHROME SIDEWALL	5.6	
(R) TRAPEZE:	15			

SYMBOL	TEMP.	LOCATION	SIZE	K	TYPE	MODEL	ESCH	TOTAL
(O)	165°	UPRIGHT OR PENDANT	1/2"	5.6	Q.R.	RELIABLE FTR WHITE SEMI-RECESSED PENDANT	FWH	176
(O)	165°	UPRIGHT OR PENDANT	1/2"	5.6	Q.R.	RELIABLE FTR BRONZE UPRIGHT	FWH	28
(O)	165°	UPRIGHT OR PENDANT	1/2"	5.6	INST.	RELIABLE ZX-OR-INST CHROME PENDANT	CHCH	3
(O)	165°	SIDEWALL	1/2"	5.6	INST.	RELIABLE ZX-OR-INST CHROME SIDEWALL	CHCH	8

Date	Revisions
11/2000	Completed Building C.
02-07-0	CHANGED ZONE CONFIGURATION

Brewer & Company of West Virginia, Inc.
Charleston Morgantown
1-800-642-8598

LAKIN CORRECTIONAL FACILITY FOR WOMEN

LOCATION: LAKIN WEST VIRGINIA
CONTRACT WITH: STATE OF WEST VIRGINIA
DATE: 10/1/00 JOB NO.: 2000-02-5270 DWG. NO.:
SCALE: 1/8"=1'-0" SPRINKLERS THIS DRAWING: 215
PREP. BY: CHRIS

ALL HANGER MATERIALS SIZED PER NFPA 13.