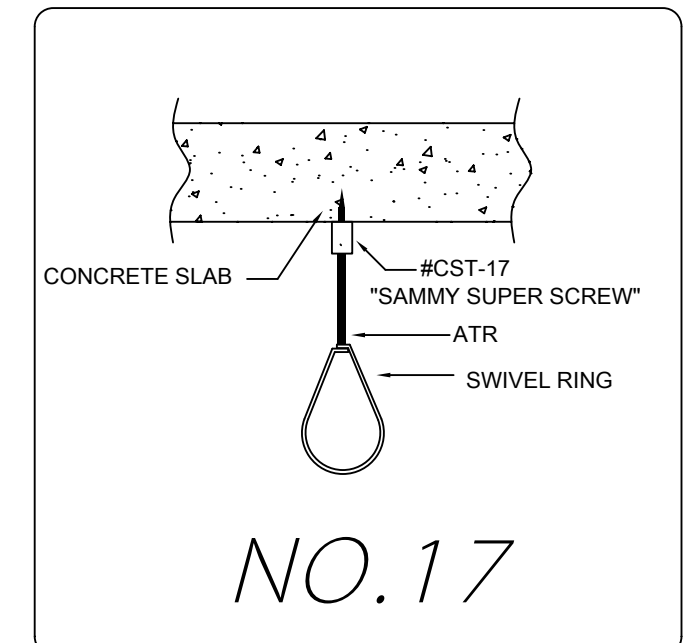
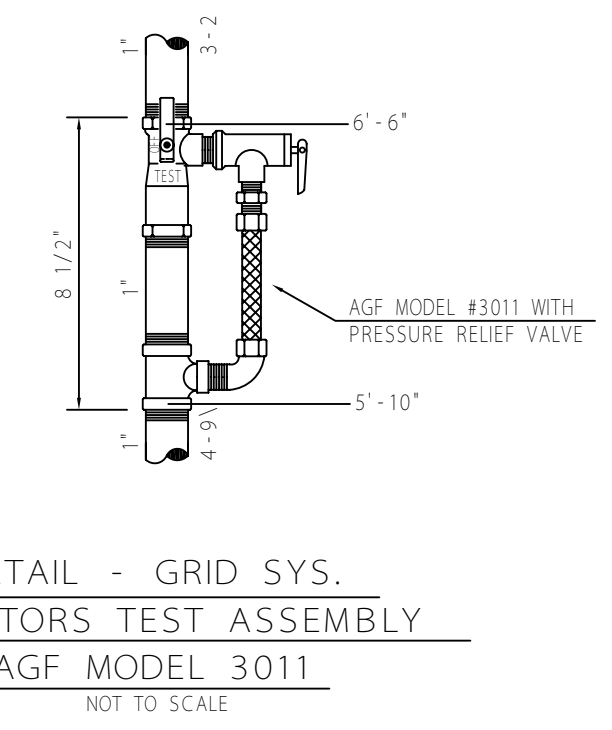


Design Area No. #2B - LIGHT  
Density .10 Area 900  
Flow 226.74gpm @ 30.21psi  
Includes 100 gpm Hose allowance

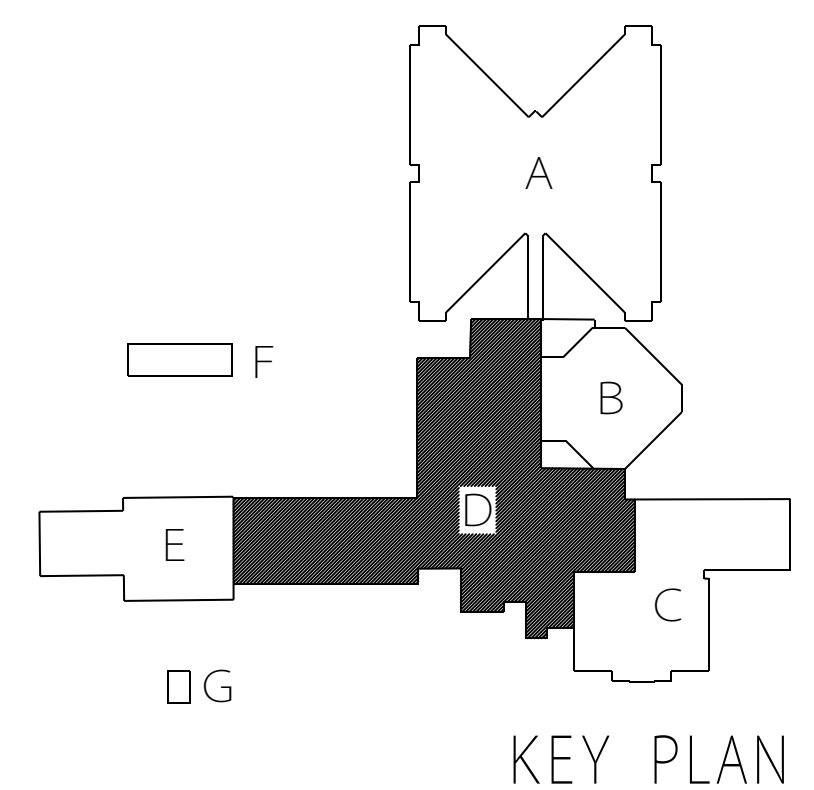
BOTTOM OF CONCRETE SLAB = 11'-0" HANGERS = TYPE #17x1'-4"

Design Area No. #1B - LIGHT  
Density .10 Area 900  
Flow 249.51gpm @ 42.06psi  
Includes 100 gpm Hose allowance



ZONES #1 & #2 FIRE SPRINKLER PLAN  
SCALE: 1/8"=1'-0"

CEILING HEIGHT = 9'-0" U.N.O.  
ELEVATION OF PIPE = 10'-8" A.F.F. (U.N.O.)  
TOP OF STEEL VARIES AS NOTED  
ALL HANGERS = TYPE #24xAS NOTED (U.N.O.)  
ALL DROPS = 1"x0'-5"



FPA 13 and State Fire Codes require the building owner to be responsible for maintaining the sprinkler system and keeping the system in good operating condition. With the influx of new and specific fire sprinkler styles in the market the sprinkler heads in this building may be a combination of standard response, quick response, or residential types, and could be either a standard or extended coverage spray pattern. Care should be exercised during the replacement of any sprinkler head to be assured the replacement sprinkler is identical to the original sprinkler head. Head requirements to be considered include, but are not limited to, make, model, orifice size, temperature, response requirements, spray pattern, and maximum spacing limitations.

NOTE: PIPE-END PREPARATION MARKS DO NOT INCLUDE FITTING TAKE-OUTS: ALL PIPE AND HANGERS ARE SHOWN CENTER-TO-CENTER ONLY. FITTING TAKE-OUTS WILL BE PERFORMED BY COMPUTER STOCKING. SEE TITLEROCK FOR PIPE AND FITTING STYLES.

Building North

Note:  
To prevent freezing of pipe in sprinkler system others shall provide sufficient heat to maintain system above 40° F, unless an anti-freeze loop or dry pipe system is installed.

All welded fittings to be shop welded and in accordance with NFPA Pamphlet 13.

Sprinkler foreman to locate any high temp. heads not shown on shop drawing.

General Notes

PIPE:  
1" THRU 2" - THREADABLE THINWALL (A-135 OR A-795F)  
2" & LARGER SCH40 A135 THINWALL w/ ROLL GROOVED ENDS

FITTINGS:  
1" - 2" THREADED FITTINGS - BLACK STANDARD WEIGHT CAST IRON  
2" & LARGER WELDED LINE OPENINGS & FROLOCK MECH. FITTINGS

BLDG. CONSTRUCTION:  
NON COMBUSTIBLE STEEL I BEAMS AND BAR JOISTS

SPKLR LOCATION: AS REQUIRED BY FIRE CODE, BUT NOT NECESSARILY CENTER OF TILES

The following are to be provided or installed by:

SYMBOL	DESCRIPTION
(A)	PAINTING OF PIPE - IF DESIRED
(B)	PIPE IDENTIFICATION MARKERS
(C)	GRID SYSTEM PRESSURE RELIEF VALVE
(D)	SPARE HEAD CABINET WITH WRENCH
(E)	MAIN DRAIN/FIRST VALVE & GAGES
(F)	EXISTING PIPE REMOVAL
(G)	EXISTING SPRINKLER RELOCATION
(H)	HOUSEKEEPING PAD
(I)	SEWER DRAIN CONNECTIONS
(J)	SLEEVES
(K)	FIBR. PAULK - FIBR. RATED WALLS

Legend

SYMBOL	DESCRIPTION
(L)	1/4" OF PIPE TO BOTTOM OF STL. OR CONC. DECK OR BOTTOM OF WOOD JOIST
(M)	1/4" OF PIPE TO BOTTOM OF STEEL BEAM OR METAL PURLIN
(N)	HANGER ROD LENGTH
(O)	COACH SCREW ROD OR SUPERSCREW W/ROD & RING
(P)	Z- PURLIN CLAMP, MT ROD & RING
(Q)	UNLESS NOTED OTHERWISE
(R)	TRAPEZE

Hangers

SYMBOL	TEMP.	LOCATION	SIZE	K	TYPE	MODEL	ESCH.	TOTAL
(S)	165°	PENDANT OR UPRIGHT	1/2"	3.6	Q.R.	RELIABLE FIFR WHITE SEMI-RECESSED PENDANT	FWWH	307
(T)	165°	UPRIGHT OR PIPE	1/2"	3.6	Q.R.	RELIABLE FIFR BRONZE UPRIGHT		25
(U)	165°	PENDANT	1/2"	3.6	INST.	RELIABLE ZX-DR-INST CHROME PENDANT	CHCH	5
(V)	165°	SEMIWALL	1/2"	3.6	INST.	RELIABLE ZX-DR-INST CHROME SEMIWALL	CHCH	4
(W)	165°	STANDARD	1/2"	3.6	STD.	RELIABLE G3 CHROME SEMI-RECESSED DRY-PENDANT	CHCH	3
(X)	165°	SEMIWALL	1/2"	3.6	Q.R.	RELIABLE FIFR WHITE SEMI-RECESSED SEMIWALL	FWWH	3

Sprinklers this drawing:

SYMBOL	TEMP.	LOCATION	SIZE	K	TYPE	MODEL	ESCH.	TOTAL
(Y)	165°	PENDANT	1/2"	3.6	Q.R.	RELIABLE FIFR WHITE SEMI-RECESSED PENDANT	FWWH	307
(Z)	165°	UPRIGHT	1/2"	3.6	Q.R.	RELIABLE FIFR BRONZE UPRIGHT		25
(AA)	165°	PENDANT	1/2"	3.6	INST.	RELIABLE ZX-DR-INST CHROME PENDANT	CHCH	5
(AB)	165°	SEMIWALL	1/2"	3.6	INST.	RELIABLE ZX-DR-INST CHROME SEMIWALL	CHCH	4
(AC)	165°	STANDARD	1/2"	3.6	STD.	RELIABLE G3 CHROME SEMI-RECESSED DRY-PENDANT	CHCH	3
(AD)	165°	SEMIWALL	1/2"	3.6	Q.R.	RELIABLE FIFR WHITE SEMI-RECESSED SEMIWALL	FWWH	3

Date: 02-07-01

Revisions: CHANGED ZONE CONFIGURATION

Brewer & Company  
of West Virginia, Inc.  
Charleston Morgantown  
1-800-642-8598

LAKIN CORRECTONAL CENTER  
FOR WOMEN

LOCATION: LAKIN WEST VIRGINIA  
CONTRACT WITH: STATE OF WEST VIRGINIA