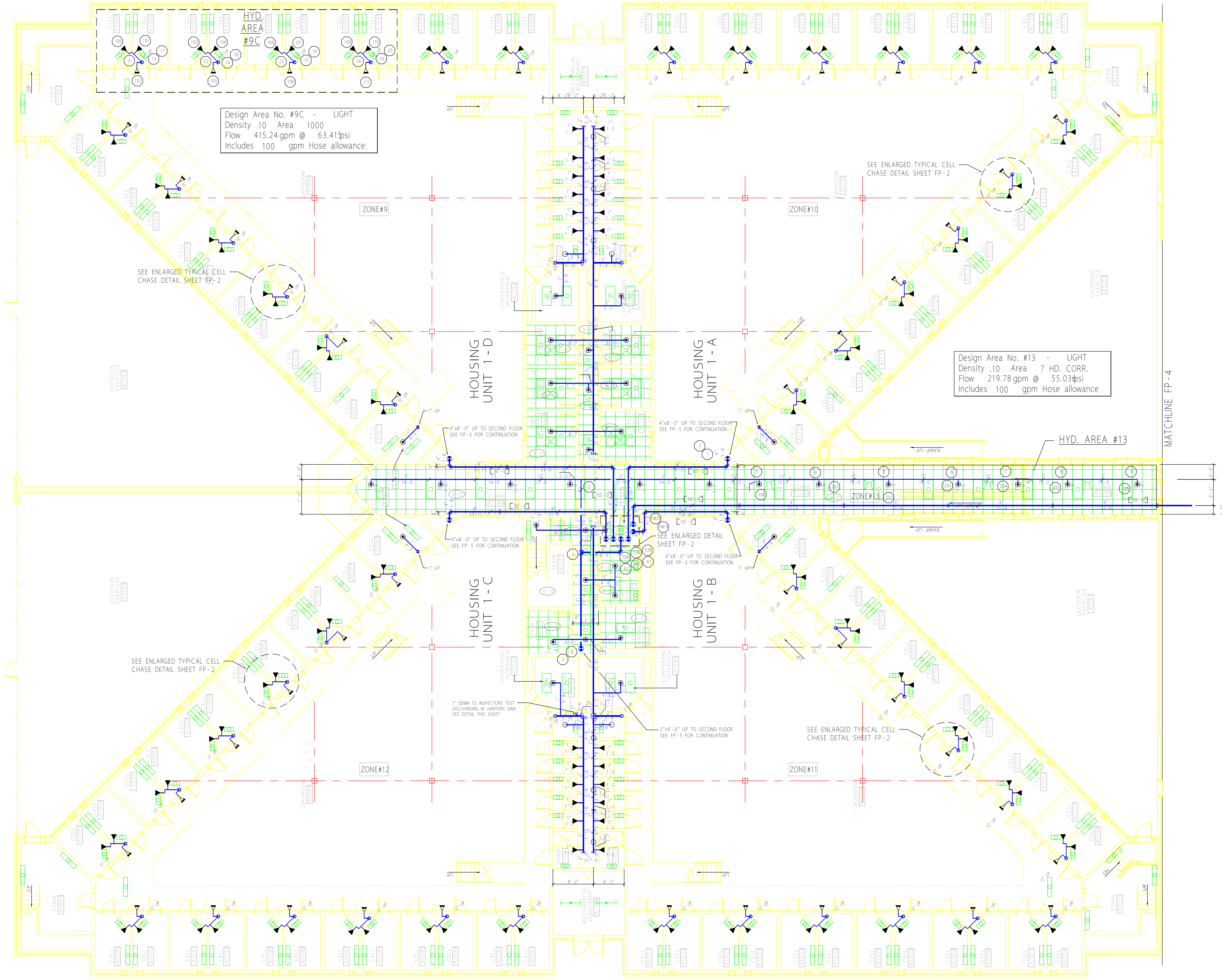
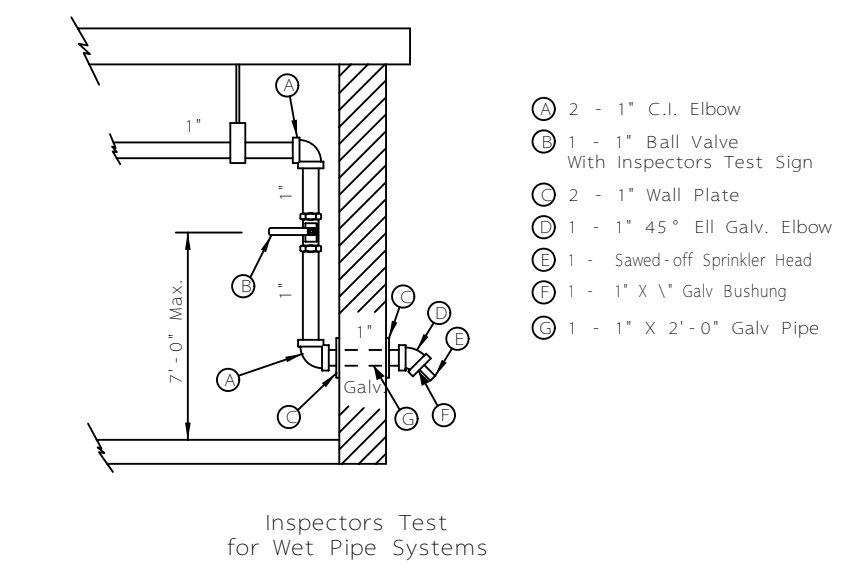
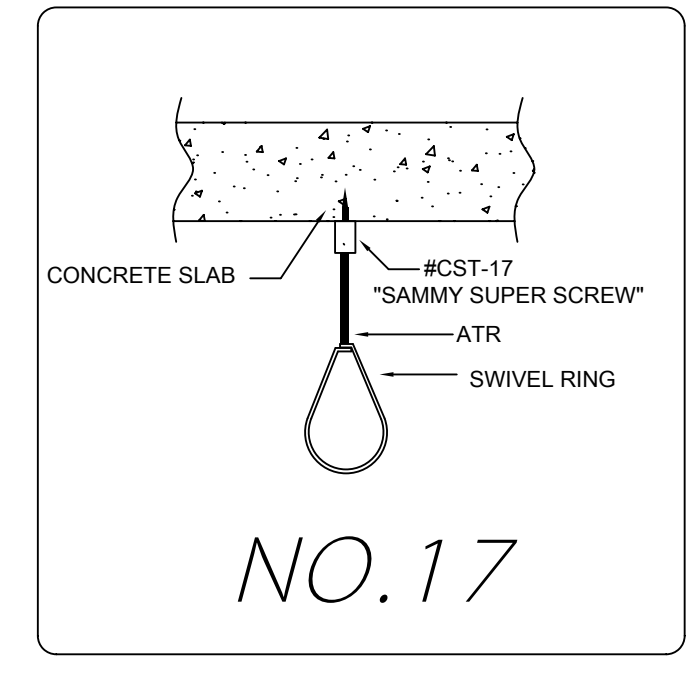


NFPA 13 and State Fire Codes require the building owner to be responsible for maintaining the sprinkler system and keeping the system in good operating condition. With the influx of new and specific fire sprinkler styles in the market the sprinkler heads in this building may be a combination of standard response, quick response, or residential styles, and could be either a standard or extended coverage spray pattern. Care should be exercised during the replacement of any sprinkler head to be assured the replacement sprinkler is identical to the original sprinkler head. Head requirements to be considered include, but are not limited to, make, model, orifice size, temperature, pressure requirements, spray pattern, and maximum spacing limitations.



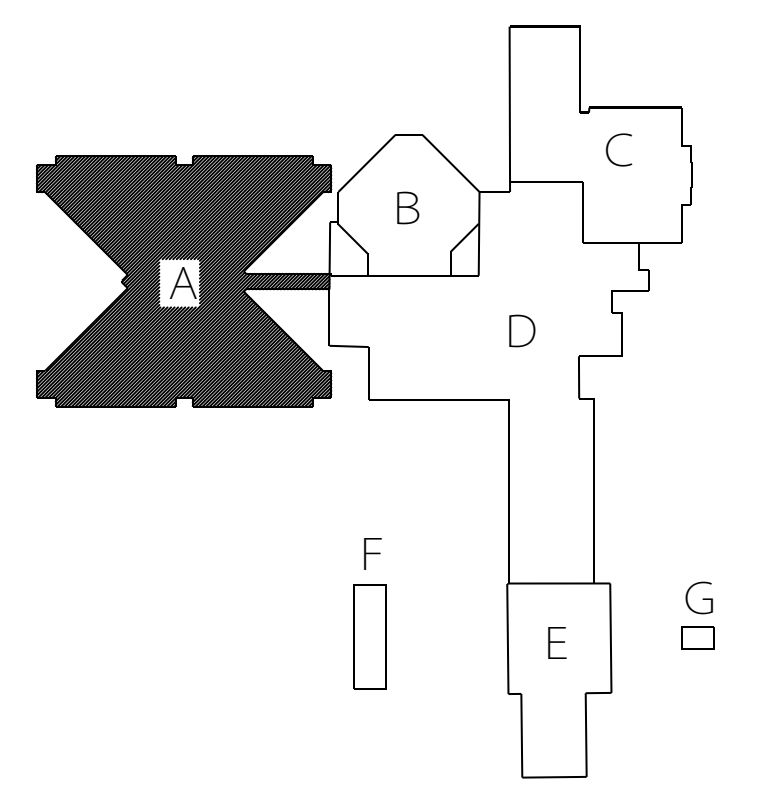
Design Area No. #9C - LIGHT
Density .10 Area 1000
Flow 415.24 gpm @ 63.41psi
Includes 100 gpm Hose allowance

Design Area No. #13 - LIGHT
Density .10 Area 7 HD. CORR.
Flow 219.78 gpm @ 55.03psi
Includes 100 gpm Hose allowance



AREA "A" FIRST FLOOR FIRE SPRINKLER PLAN
SCALE: 1/8"=1'-0"

CEILING HEIGHT = 8'-4" U.N.O.
ELEVATION OF PIPE = 9'-8" A.F.F. (U.N.O.)
ALL DROPS = 1"x1'-5"
ALL HANGERS w/PIPE 9'-8" A.F.F. = TYPE #17x2'-0" (U.N.O.)
ALL HANGERS w/PIPE 10'-0" A.F.F. = TYPE #17x1'-8" (U.N.O.)



KEY PLAN

NOTE: PIPE-END PREPARATION MARKS DO NOT INCLUDE FITTING TAKE-OUTS: ALL PIPE AND HANGERS ARE SHOWN CENTER-TO-CENTER ONLY. FITTING TAKE-OUTS WILL BE PERFORMED BY COMPUTER STOCKING. SEE TITELBLOCK FOR PIPE AND FITTING STYLES.

Building North	Note: To prevent freezing of pipe in sprinkler system others shall provide sufficient heat to maintain system above 40° F, unless an anti-freeze loop or dry pipe system is installed. All welded fittings to be shop welded and in accordance with NFPA Pamphlet 13. Sprinkler foreman to locate any high temp. heads not shown on shop drawing.
	General Notes PIPE: 1" THRU 2" - THREADED THINWALL (A-135 OR A-795F) 2" & LARGER SCH40 A135 THINWALL w/ ROLL GROOVED ENDS FITTINGS: 1"-2" THREADED FITTINGS - BLACK STANDARD WEIGHT CAST IRON 2" & LARGER WELDED LINE OPENINGS & FIRELOCK MECH. FITTINGS BLDG. CONSTRUCTION: NON COMBUSTIBLE STEEL I BEAMS AND BAR JOISTS SPKLR LOCATION: AS REQUIRED BY FIRE CODE, BUT NOT NECESSARILY CENTER OF TILES

The following are to be provided or installed by:	
ESCH	PAINTING OF PIPE - IF DESIRED
ESCH	PIPE IDENTIFICATION MARKERS
ESCH	GRID SYSTEM PRESSURE RELIEF VALVE
ESCH	SPARE HEAD CABINET WITH WRENCH
ESCH	MAIN DRAIN TEST VALVE & GAGES
ESCH	EXISTING PIPE REMOVAL
ESCH	EXISTING SPRINKLER RELOCATION
ESCH	HOUSEKEEPING PAD
ESCH	SPRINKER DRAIN CONNECTIONS
ESCH	SLEEVES:
ESCH	FIRE CAULK - FIRE RATED WALLS

Legend	
(0)	OF PIPE TO BOTTOM OF STEEL OR CONCR. DECK OR BOTTOM OF WOOD JOIST
(1)	OF PIPE TO BOTTOM OF STEEL BEAM OR METAL FLOOR
(2)	HANGER ROD LENGTH
AFF	PIPE ABOVE FINISHED FLOOR
COACH	COACH SCREW ROD OR SUPERSCREW W/ROD & RING
HYD	HYDRAULIC CALCULATION POINT
PURUL	PURUL CLAMP, MT ROD & RING
UNO	UNLESS NOTED OTHERWISE
C.H.	CEILING HEIGHT

Hangers	
24	MT. ROD, RING & TOP BM CLAMP W/LOCK NUT
58/SW	MT. ROD, RING, SIDE BM BRACKET & BOLT
12	MT. ROD, RING & EXP. CASE
10	COACH SCREW ROD OR SUPERSCREW W/ROD & RING
22	Z-PURUL CLAMP, MT ROD & RING
15	TRAPEZE:

Sprinklers this drawing:	
SYMBOL	TEMP
LOCATION	SIZE
K	TYPE
MODEL	ESCH
RELIABLE FIFR WHITE SEMI-RECESSED PENDANT	39
RELIABLE FIFR BRONZE UPRIGHT	10
RELIABLE ZX-INST-ORC CHROME SDEWALL	CHCH
RELIABLE ZX-OR-INST CHROME SDEWALL	120

Date	Revisions
02-14-01	CHANGED ZONE CONFIGURATION
05-31-01	RELOCATED (4) RISER NIPPLES
02-19-02	CHANGE CENTRAL CORRIDOR A1148 TO INST HEADS

Brewer & Company
of West Virginia, Inc.
Charleston Morgantown
1-800-642-8598

LAKIN CORRECTIONAL FACILITY
FOR WOMEN

LOCATION: LAKIN WEST VIRGINIA
CONTRACT WITH: STATE OF WEST VIRGINIA