



State of West Virginia
 Department of Administration
 Purchasing Division
 2019 Washington Street East
 Post Office Box 50130
 Charleston, WV 25305-0130

Solicitation

NUMBER
LCF22112

PAGE
1

ADDRESS CORRESPONDENCE TO ATTENTION OF:
TARA LYLE 304-558-2544

RFQ COPY
 TYPE NAME/ADDRESS HERE

V
E
N
D
O
R

LAKIN CORRECTIONAL FACILITY

S
H
I
P
T
O

11264 OHIO RIVER ROAD
 WEST COLUMBIA, WV
 25287 304-558-2036

DATE PRINTED
06/09/2013

BID OPENING DATE: 06/18/2013 BID OPENING TIME 01:30PM

LINE	QUANTITY	UOP	CAT. NO.	ITEM NUMBER	UNIT PRICE	AMOUNT
0001						
				ADDENDUM NO. 2		
				SEE ATTACHED PAGES.		
				END OF ADDENDUM NO. 2		
				JB		
	1			340-80		
				PROVIDE & INSTALLATION OF CARBON MONOXIDE DETECTORS		
				***** THIS IS THE END OF RFQ LCF22112 ***** TOTAL:		

SIGNATURE	TELEPHONE	DATE
TITLE	FEIN	ADDRESS CHANGES TO BE NOTED ABOVE

WHEN RESPONDING TO SOLICITATION, INSERT NAME AND ADDRESS IN SPACE ABOVE LABELED 'VENDOR'

SOLICITATION NUMBER: LCF22112
Addendum Number: 2

The purpose of this addendum is to modify the solicitation identified as LCF22112 ("Solicitation") to reflect the change(s) identified and described below.

Applicable Addendum Category:

- Modify bid opening date and time
- Modify specifications of product or service being sought
- Attachment of vendor questions and responses
- Attachment of pre-bid sign-in sheet
- Correction of error
- Other

Description of Modification to Solicitation:

Responses to vendor questions attached. Facility building drawing plans attached – Attachment A through Attachment I. The bid opening remains 06/18/2013 at 1:30 pm.

Additional Documentation: Documentation related to this Addendum (if any) has been included herewith as Attachment A and is specifically incorporated herein by reference.

Terms and Conditions:

1. All provisions of the Solicitation and other addenda not modified herein shall remain in full force and effect.
2. Vendor should acknowledge receipt of all addenda issued for this Solicitation by completing an Addendum Acknowledgment, a copy of which is included herewith. Failure to acknowledge addenda may result in bid disqualification. The addendum acknowledgement should be submitted with the bid to expedite document processing.

ATTACHMENT A

Q1: During the pre-bid meeting a question was asked about the type of conduit to be used if it had to be rigid.

A1: No, the conduit does not have to be rigid.

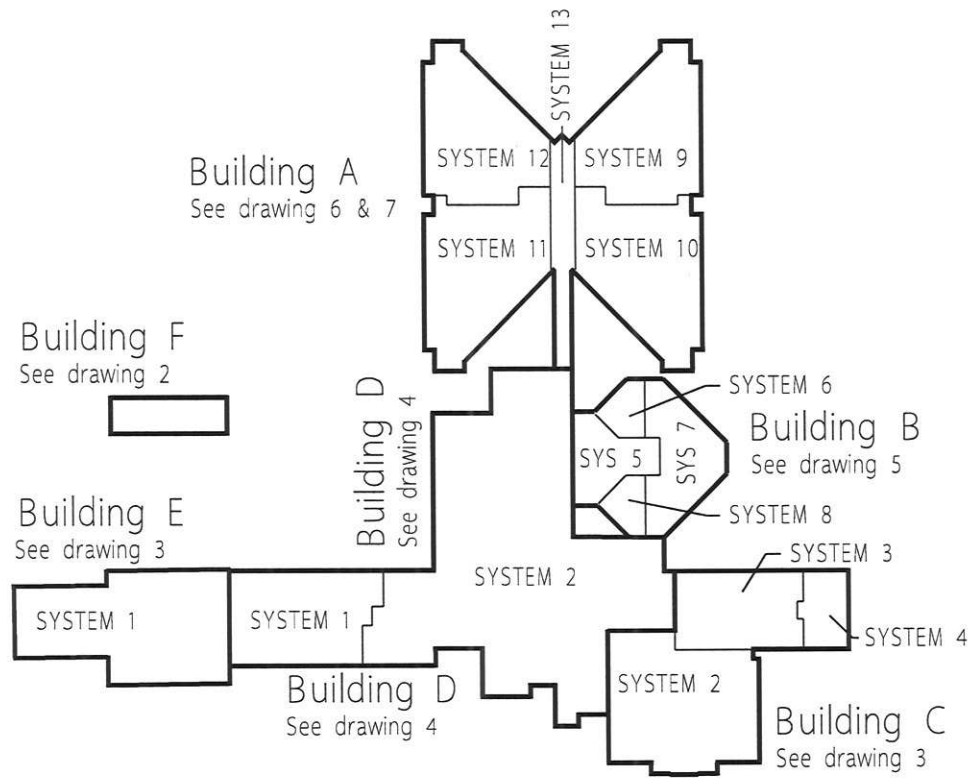
Q2: A request for copies of building drawing plans was made in order to prepare the report to the state Fire Marshal Office for approval.

A2. Attached are nine (9) PDF copies of the facility building drawing plans.

Attachment A	Fire Sprinkler System
Attachment B	Area "A" First Floor Fire Sprinkler Plan
Attachment C	Area "A" Second Floor Fire Sprinkler Plan
Attachment D	Area "B" Second Floor Fire Sprinkler Plan
	Area "B" First Floor Fire Sprinkler Plan
Attachment E	Smoke System Activation Schedule
Attachment F	J Building Plan
Attachment G	Site Plan
Attachment H	Zones #1 and #2 Fire Sprinkler Plan
Attachment I	Zones #2, #3, #4 Fire Sprinkler Plan

The bid opening remains 06/18/2013 at 1:30 pm.

No additional questions will be accepted on this RFQ.



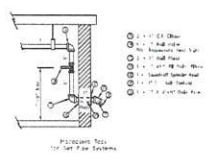
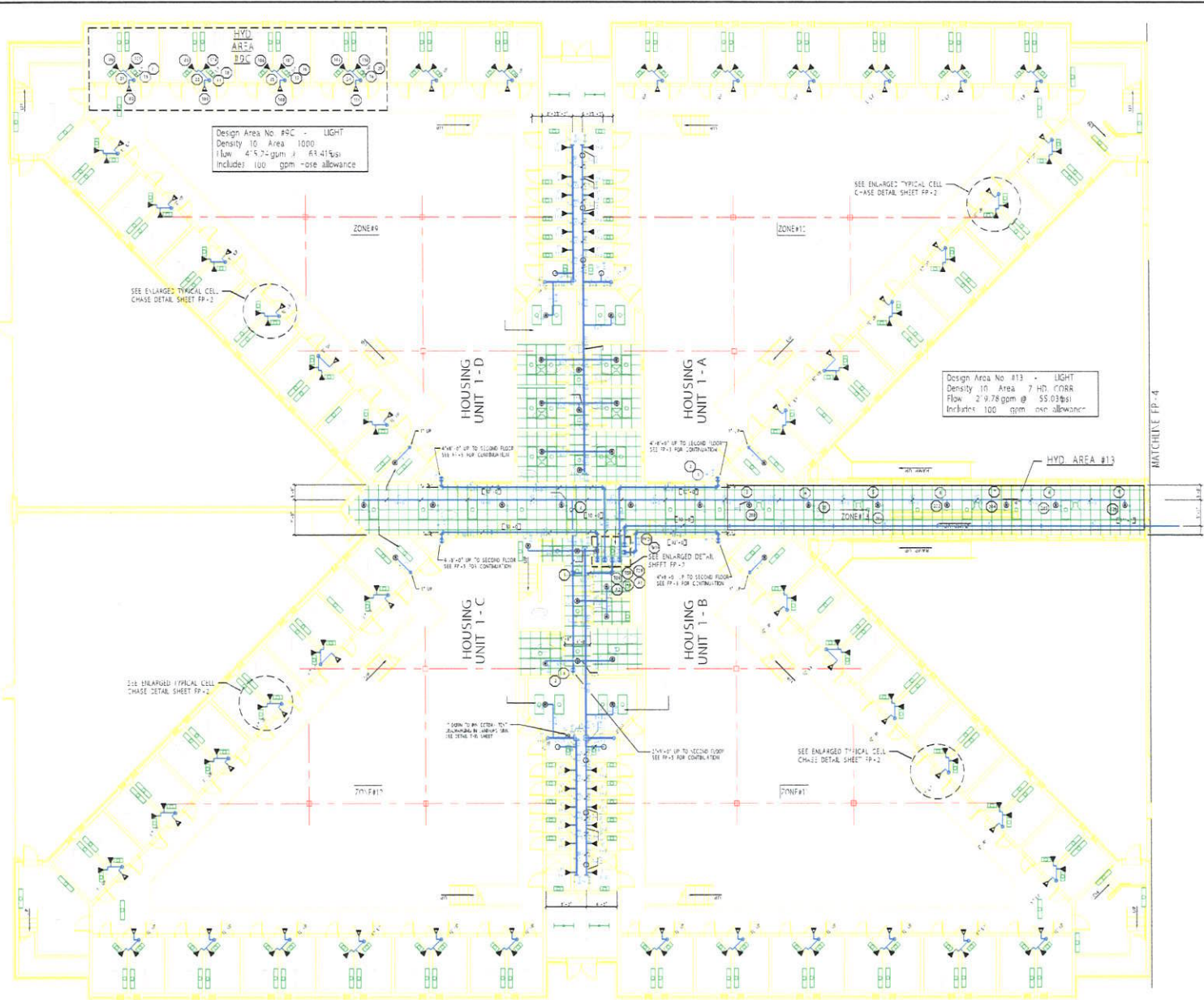
KEY PLAN

See shop drawing 2 for Smoke Activation Schedule.
Fire sprinkler system flow switches are connected
to the smoke activation system as indicated on
contract drawing M5.01.


Building G
See drawing 2

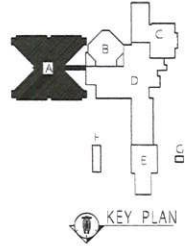
Lakin Correction Center for Women

Fire Sprinkler System
Brewer & Company of WV, Inc.



AREA 'A' FIRST FLOOR FIRE SPRINKLER PLAN

CEILING HEIGHT = 8'-4" U.N.O.
 ELEVATION OF PIPE = 9'-8" A.F.F. (U.N.O.)
 ALL DROPS = 1"x1'-5"
 ALL HANGERS W/PIPE 9'-8" A.F.F. = TYPE #17X2'-2" (U.N.O.)
 ALL HANGERS W/PIPE 10'-0" A.F.F. = TYPE #17X1'-8" (U.N.O.)



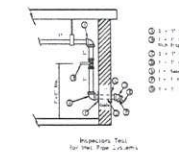
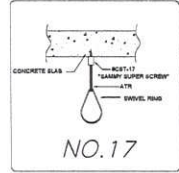
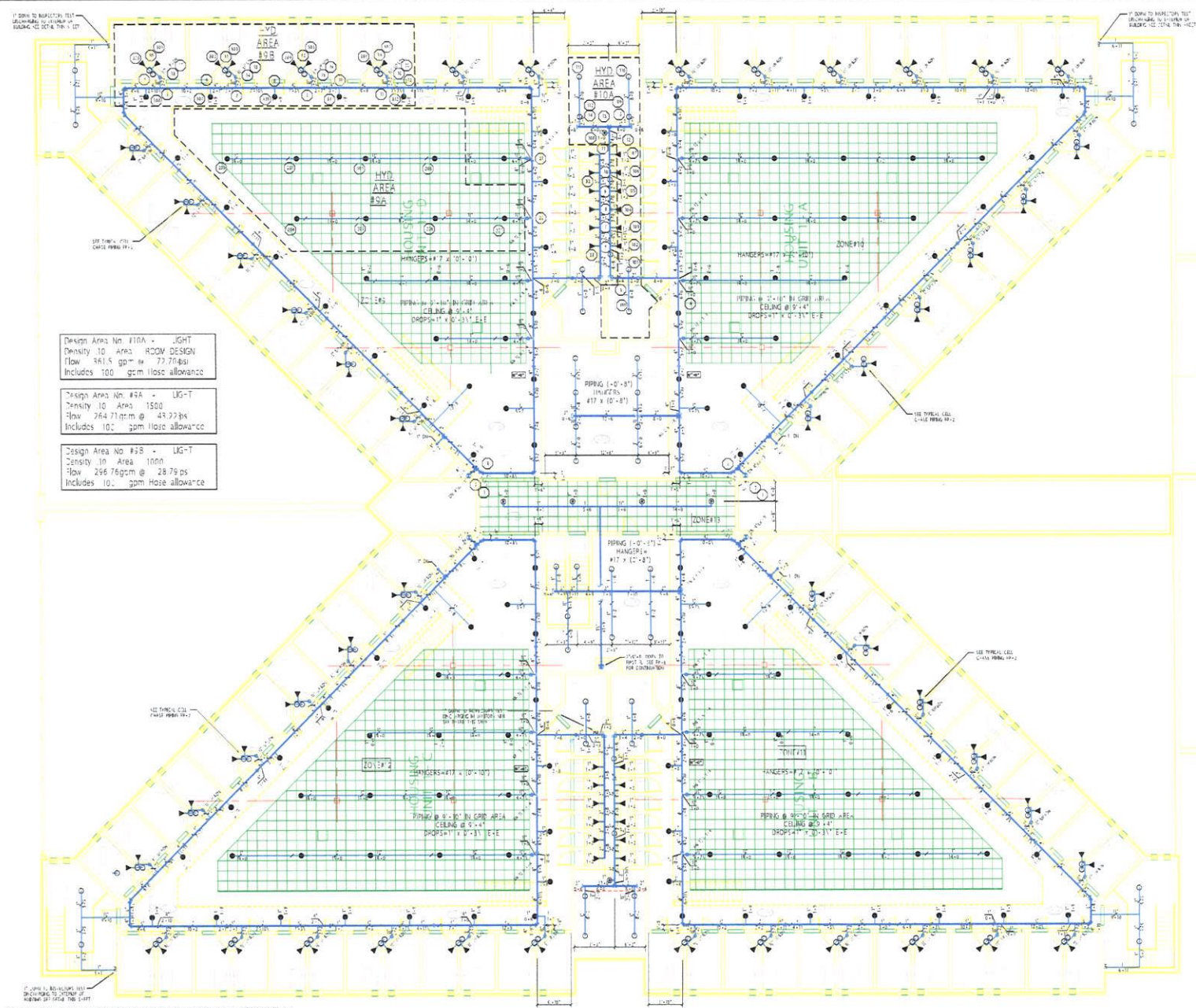
2" PIPE AND FITTINGS SHALL BE 150 LB. CLASS STEEL (SEE SPEC). ALL FITTINGS AND WELDS ARE SHOWN EXCEPT TO CONTRARY. ALL WELDS SHALL BE FULL PENETRATION WELDS. ALL WELDS SHALL BE FULL PENETRATION WELDS. ALL WELDS SHALL BE FULL PENETRATION WELDS.

The following are to be provided by the contractor:

Item	Description	Quantity	Unit
1	CONCRETE	1	CU YD
2	STEEL	1	TON
3	PIPE	1	100' LB
4	VALVES	1	EA
5	ELBOWS	1	EA
6	TEES	1	EA
7	COUPLERS	1	EA
8	FLANGES	1	EA
9	ADAPTERS	1	EA
10	WELDS	1	100' LB
11	PAINT	1	100' LB
12	LABOR	1	100' LB
13	ELECTRICAL	1	100' LB
14	MECHANICAL	1	100' LB
15	PLUMBING	1	100' LB
16	HEATING	1	100' LB
17	Cooling	1	100' LB
18	VENTILATION	1	100' LB
19	AC	1	100' LB
20	HEATING	1	100' LB
21	COOLING	1	100' LB
22	VENTILATION	1	100' LB
23	PLUMBING	1	100' LB
24	MECHANICAL	1	100' LB
25	ELECTRICAL	1	100' LB

Legend

1	1/2" RIGID PIPE	1/2"	1/2"
2	3/4" RIGID PIPE	3/4"	3/4"
3	1" RIGID PIPE	1"	1"
4	1 1/2" RIGID PIPE	1 1/2"	1 1/2"
5	2" RIGID PIPE	2"	2"
6	2 1/2" RIGID PIPE	2 1/2"	2 1/2"
7	3" RIGID PIPE	3"	3"
8	4" RIGID PIPE	4"	4"
9	5" RIGID PIPE	5"	5"
10	6" RIGID PIPE	6"	6"
11	8" RIGID PIPE	8"	8"
12	10" RIGID PIPE	10"	10"
13	12" RIGID PIPE	12"	12"
14	14" RIGID PIPE	14"	14"
15	16" RIGID PIPE	16"	16"
16	18" RIGID PIPE	18"	18"
17	20" RIGID PIPE	20"	20"
18	24" RIGID PIPE	24"	24"
19	30" RIGID PIPE	30"	30"
20	36" RIGID PIPE	36"	36"
21	42" RIGID PIPE	42"	42"
22	48" RIGID PIPE	48"	48"
23	54" RIGID PIPE	54"	54"
24	60" RIGID PIPE	60"	60"
25	66" RIGID PIPE	66"	66"
26	72" RIGID PIPE	72"	72"
27	78" RIGID PIPE	78"	78"
28	84" RIGID PIPE	84"	84"
29	90" RIGID PIPE	90"	90"
30	96" RIGID PIPE	96"	96"
31	102" RIGID PIPE	102"	102"
32	108" RIGID PIPE	108"	108"
33	114" RIGID PIPE	114"	114"
34	120" RIGID PIPE	120"	120"
35	126" RIGID PIPE	126"	126"
36	132" RIGID PIPE	132"	132"
37	138" RIGID PIPE	138"	138"
38	144" RIGID PIPE	144"	144"
39	150" RIGID PIPE	150"	150"
40	156" RIGID PIPE	156"	156"
41	162" RIGID PIPE	162"	162"
42	168" RIGID PIPE	168"	168"
43	174" RIGID PIPE	174"	174"
44	180" RIGID PIPE	180"	180"
45	186" RIGID PIPE	186"	186"
46	192" RIGID PIPE	192"	192"
47	198" RIGID PIPE	198"	198"
48	204" RIGID PIPE	204"	204"
49	210" RIGID PIPE	210"	210"
50	216" RIGID PIPE	216"	216"
51	222" RIGID PIPE	222"	222"
52	228" RIGID PIPE	228"	228"
53	234" RIGID PIPE	234"	234"
54	240" RIGID PIPE	240"	240"
55	246" RIGID PIPE	246"	246"
56	252" RIGID PIPE	252"	252"
57	258" RIGID PIPE	258"	258"
58	264" RIGID PIPE	264"	264"
59	270" RIGID PIPE	270"	270"
60	276" RIGID PIPE	276"	276"
61	282" RIGID PIPE	282"	282"
62	288" RIGID PIPE	288"	288"
63	294" RIGID PIPE	294"	294"
64	300" RIGID PIPE	300"	300"
65	306" RIGID PIPE	306"	306"
66	312" RIGID PIPE	312"	312"
67	318" RIGID PIPE	318"	318"
68	324" RIGID PIPE	324"	324"
69	330" RIGID PIPE	330"	330"
70	336" RIGID PIPE	336"	336"
71	342" RIGID PIPE	342"	342"
72	348" RIGID PIPE	348"	348"
73	354" RIGID PIPE	354"	354"
74	360" RIGID PIPE	360"	360"
75	366" RIGID PIPE	366"	366"
76	372" RIGID PIPE	372"	372"
77	378" RIGID PIPE	378"	378"
78	384" RIGID PIPE	384"	384"
79	390" RIGID PIPE	390"	390"
80	396" RIGID PIPE	396"	396"
81	402" RIGID PIPE	402"	402"
82	408" RIGID PIPE	408"	408"
83	414" RIGID PIPE	414"	414"
84	420" RIGID PIPE	420"	420"
85	426" RIGID PIPE	426"	426"
86	432" RIGID PIPE	432"	432"
87	438" RIGID PIPE	438"	438"
88	444" RIGID PIPE	444"	444"
89	450" RIGID PIPE	450"	450"
90	456" RIGID PIPE	456"	456"
91	462" RIGID PIPE	462"	462"
92	468" RIGID PIPE	468"	468"
93	474" RIGID PIPE	474"	474"
94	480" RIGID PIPE	480"	480"
95	486" RIGID PIPE	486"	486"
96	492" RIGID PIPE	492"	492"
97	498" RIGID PIPE	498"	498"
98	504" RIGID PIPE	504"	504"
99	510" RIGID PIPE	510"	510"
100	516" RIGID PIPE	516"	516"
101	522" RIGID PIPE	522"	522"
102	528" RIGID PIPE	528"	528"
103	534" RIGID PIPE	534"	534"
104	540" RIGID PIPE	540"	540"
105	546" RIGID PIPE	546"	546"
106	552" RIGID PIPE	552"	552"
107	558" RIGID PIPE	558"	558"
108	564" RIGID PIPE	564"	564"
109	570" RIGID PIPE	570"	570"
110	576" RIGID PIPE	576"	576"
111	582" RIGID PIPE	582"	582"
112	588" RIGID PIPE	588"	588"
113	594" RIGID PIPE	594"	594"
114	600" RIGID PIPE	600"	600"
115	606" RIGID PIPE	606"	606"
116	612" RIGID PIPE	612"	612"
117	618" RIGID PIPE	618"	618"
118	624" RIGID PIPE	624"	624"
119	630" RIGID PIPE	630"	630"
120	636" RIGID PIPE	636"	636"
121	642" RIGID PIPE	642"	642"
122	648" RIGID PIPE	648"	648"
123	654" RIGID PIPE	654"	654"
124	660" RIGID PIPE	660"	660"
125	666" RIGID PIPE	666"	666"
126	672" RIGID PIPE	672"	672"
127	678" RIGID PIPE	678"	678"
128	684" RIGID PIPE	684"	684"
129	690" RIGID PIPE	690"	690"
130	696" RIGID PIPE	696"	696"
131	702" RIGID PIPE	702"	702"
132	708" RIGID PIPE	708"	708"
133	714" RIGID PIPE	714"	714"
134	720" RIGID PIPE	720"	720"
135	726" RIGID PIPE	726"	726"
136	732" RIGID PIPE	732"	732"
137	738" RIGID PIPE	738"	738"
138	744" RIGID PIPE	744"	744"
139	750" RIGID PIPE	750"	750"
140	756" RIGID PIPE	756"	756"
141	762" RIGID PIPE	762"	762"
142	768" RIGID PIPE	768"	768"
143	774" RIGID PIPE	774"	774"
144	780" RIGID PIPE	780"	780"
145	786" RIGID PIPE	786"	786"
146	792" RIGID PIPE	792"	792"
147	798" RIGID PIPE	798"	798"
148	804" RIGID PIPE	804"	804"
149	810" RIGID PIPE	810"	810"
150	816" RIGID PIPE	816"	816"
151	822" RIGID PIPE	822"	822"
152	828" RIGID PIPE	828"	828"
153	834" RIGID PIPE	834"	834"
154	840" RIGID PIPE	840"	840"
155	846" RIGID PIPE	846"	846"
156	852" RIGID PIPE	852"	852"
157	858" RIGID PIPE	858"	858"
158	864" RIGID PIPE	864"	864"
159	870" RIGID PIPE	870"	870"
160	876" RIGID PIPE	876"	876"
161	882" RIGID PIPE	882"	882"
162	888" RIGID PIPE	888"	888"
163	894" RIGID PIPE	894"	894"
164	900" RIGID PIPE	900"	900"
165	906" RIGID PIPE	906"	906"
166	912" RIGID PIPE	912"	912"
167	918" RIGID PIPE	918"	918"
168	924" RIGID PIPE	924"	924"
169	930" RIGID PIPE	930"	930"
170	936" RIGID PIPE	936"	936"
171	942" RIGID PIPE	942"	942"
172	948" RIGID PIPE	948"	948"
173	954" RIGID PIPE	954"	954"
174	960" RIGID PIPE	960"	960"
175	966" RIGID PIPE	966"	966"
176	972" RIGID PIPE	972"	972"
177	978" RIGID PIPE	978"	978"
178	984" RIGID PIPE	984"	984"
179	990" RIGID PIPE	990"	990"
180	996" RIGID PIPE	996"	996"
181	1002" RIGID PIPE	1002"	1002"
182	1008" RIGID PIPE	1008"	1008"
183	1014" RIGID PIPE	1014"	1014"
184	1020" RIGID PIPE	1020"	1020"
185	1026" RIGID PIPE	1026"	1026"
186	1032" RIGID PIPE	1032"	1032"
187	1038" RIGID PIPE	1038"	1038"
188	1044" RIGID PIPE	1044"	1044"
189	1050" RIGID PIPE	1050"	1050"
190	1056" RIGID PIPE	1056"	1056"
191	1062" RIGID PIPE	1062"	1062"
192	1068" RIGID PIPE	1068"	1068"
193	1074" RIGID PIPE	1074"	1074"
194	1080" RIGID PIPE	1080"	1080"
195	1086" RIGID PIPE	1086"	1086"
196	1092" RIGID PIPE	1092"	1092"
197	1098" RIGID PIPE	1098"	1098"
198	1104" RIGID PIPE	1104"	1104"
199	1110" RIGID PIPE	1110"	1110"
200	1116" RIGID PIPE	1116"	1116"
201	1122" RIGID PIPE	1122"	1122"
202	1128" RIGID PIPE	1128"	1128"
203	1134" RIGID PIPE	1134"	1134"
204	1140" RIGID PIPE	1140"	1140"
205	1146" RIGID PIPE	1146"	1146"
206	1152" RIGID PIPE	1152"	1152"
207	1158" RIGID PIPE	1158"	1158"
208	1164" RIGID PIPE	1164"	1164"
209	1170" RIGID PIPE	1170"	1170"
210	1176" RIGID PIPE	1176"	1176"
211	1182" RIGID PIPE	1182"	1182"
212	1188" RIGID PIPE	1188"	1188"
213	1194" RIGID PIPE	1194"	1194"
214	1200" RIGID PIPE	1200"	1200"
215	1206" RIGID PIPE	1206"	1206"
216	1212" RIGID PIPE	1212"	1212"
217	1218" RIGID PIPE	1218"	1218"
218	1224" RIGID PIPE	1224"	1224"
219	1230" RIGID PIPE	1230"	1230"
220	1236" RIGID PIPE	1236"	1236"
221	1242" RIGID PIPE		



Design Area No #1A - LIGHT
Density 10 Area ROOM DESIGN
Flow 361.5 gpm @ 7.77 psi
Includes 100 gpm hose allowance

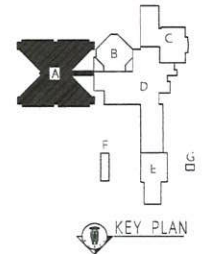
Design Area No #2A - LIGHT
Density 10 Area ROOM DESIGN
Flow 264.71 gpm @ 4.97 psi
Includes 100 gpm hose allowance

Design Area No #3B - LIGHT
Density 10 Area ROOM DESIGN
Flow 296.76 gpm @ 2.87 psi
Includes 100 gpm hose allowance

NOTE: All steel fire pipes shall be painted with a fire retardant paint. The system shall be maintained in accordance with the NFPA 25 code. The system shall be tested in accordance with the NFPA 25 code. The system shall be tested in accordance with the NFPA 25 code. The system shall be tested in accordance with the NFPA 25 code.

AREA 'A' SECOND FLOOR FIRE SPRINKLER PLAN

CEILING HEIGHT = 10'-8" U.N.O.
ELEVATION OF PIPE = 8'-6" A.F.F. (U.N.O.)
ALL DROPS = 1' X 2'-8" CENTER OF PIPE TO CEILING
ALL HANGERS = 1" X 2'-2" (U.N.O.)



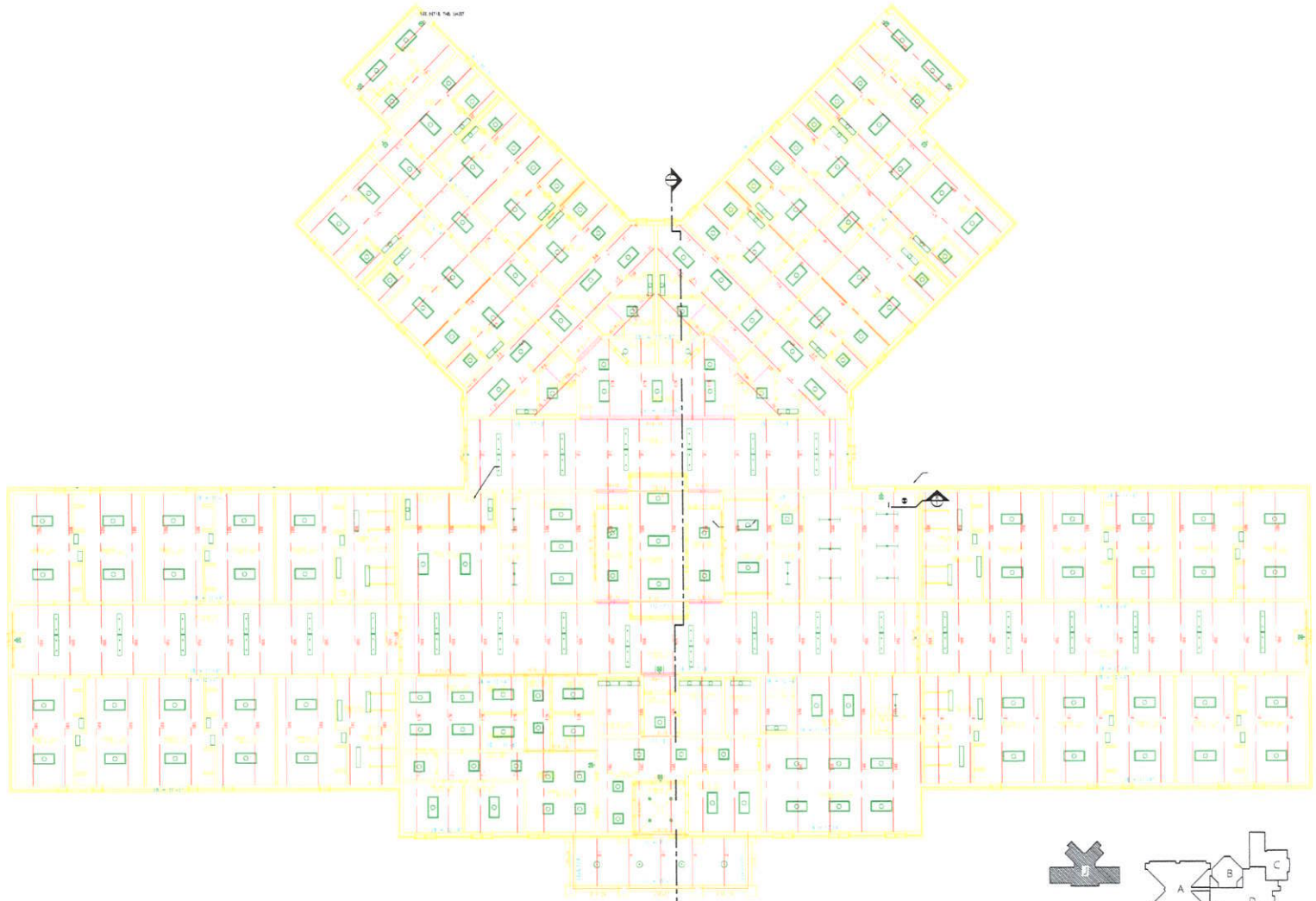
NOTE: All steel fire pipes shall be painted with a fire retardant paint. The system shall be maintained in accordance with the NFPA 25 code. The system shall be tested in accordance with the NFPA 25 code. The system shall be tested in accordance with the NFPA 25 code. The system shall be tested in accordance with the NFPA 25 code.

Legend	Hangers	Sprinklers this drawing	Date
1. 1" X 2'-2" (U.N.O.)	1. 1" X 2'-2" (U.N.O.)	1. 1" X 2'-2" (U.N.O.)	1. 1.1.2018
2. 1" X 2'-2" (U.N.O.)	2. 1" X 2'-2" (U.N.O.)	2. 1" X 2'-2" (U.N.O.)	2. 1.1.2018
3. 1" X 2'-2" (U.N.O.)	3. 1" X 2'-2" (U.N.O.)	3. 1" X 2'-2" (U.N.O.)	3. 1.1.2018
4. 1" X 2'-2" (U.N.O.)	4. 1" X 2'-2" (U.N.O.)	4. 1" X 2'-2" (U.N.O.)	4. 1.1.2018
5. 1" X 2'-2" (U.N.O.)	5. 1" X 2'-2" (U.N.O.)	5. 1" X 2'-2" (U.N.O.)	5. 1.1.2018
6. 1" X 2'-2" (U.N.O.)	6. 1" X 2'-2" (U.N.O.)	6. 1" X 2'-2" (U.N.O.)	6. 1.1.2018
7. 1" X 2'-2" (U.N.O.)	7. 1" X 2'-2" (U.N.O.)	7. 1" X 2'-2" (U.N.O.)	7. 1.1.2018
8. 1" X 2'-2" (U.N.O.)	8. 1" X 2'-2" (U.N.O.)	8. 1" X 2'-2" (U.N.O.)	8. 1.1.2018
9. 1" X 2'-2" (U.N.O.)	9. 1" X 2'-2" (U.N.O.)	9. 1" X 2'-2" (U.N.O.)	9. 1.1.2018
10. 1" X 2'-2" (U.N.O.)	10. 1" X 2'-2" (U.N.O.)	10. 1" X 2'-2" (U.N.O.)	10. 1.1.2018

Brewer & Company
of Merck Virginia, Inc.
Charleston Morgantown

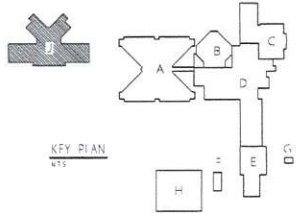
LAKIN CORRECTIONAL FACILITY FOR WOMEN

DATE: 1.1.2018

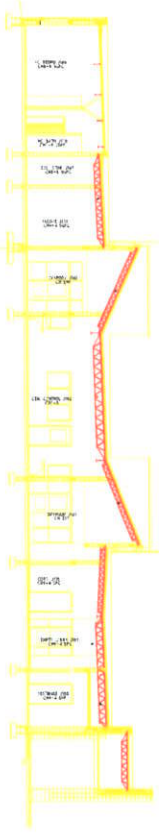


1/2" = 1'-0"
 1/4" = 3'-0"
 1/8" = 6'-0"
 1/16" = 12'-0"
 TOTAL 12' 0" x 12' 0"
 12' 0" x 12' 0" SECTION EXTRA

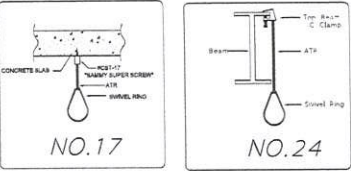
BUILDING
 SCALE: 1/8" = 1'-0"



KEY PLAN
 NTS

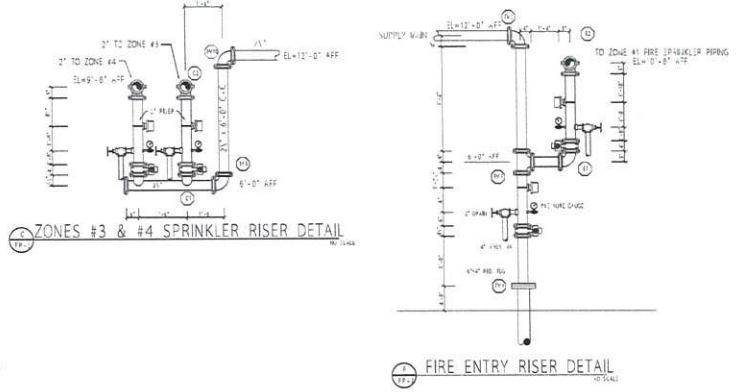


SECTION C
 SCALE: 1/8" = 1'-0"



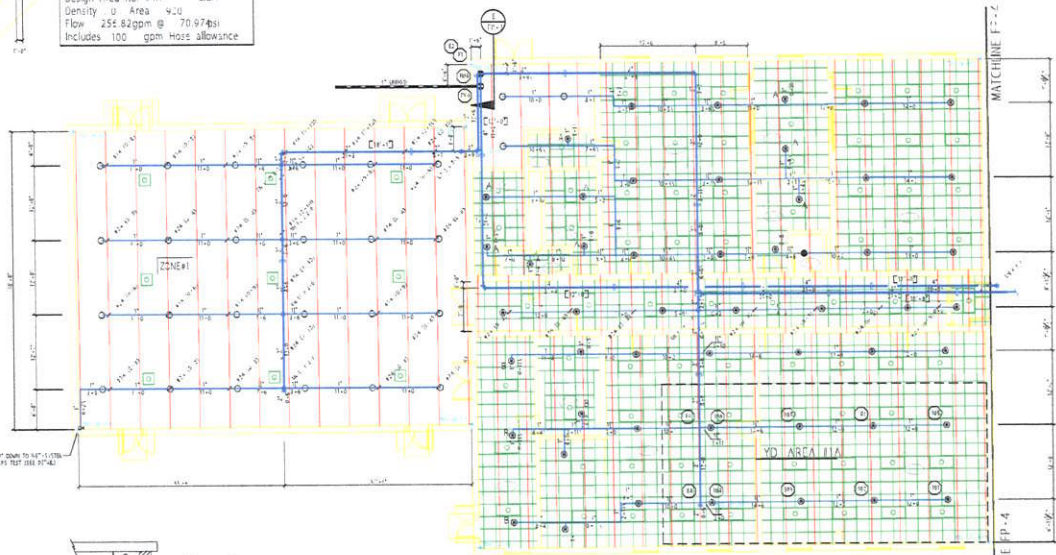
Design Area No. #4A - LIGHT
Density 10 Area 420
Flow 256.82 gpm @ 70.97 psi
Includes 100 gpm hose allowance

Design Area No. #2D - LIGHT
Density 10 Area 900
Flow 270.01 gpm @ 51.77 psi
Includes 100 gpm hose allowance



ZONES #3 & #4 SPRINKLER RISER DETAIL

FIRE ENTRY RISER DETAIL



Design Area No. #1A - LIGHT
Density 10 Area 900
Flow 231.8 gpm @ 42.98 psi
Includes 100 gpm hose allowance

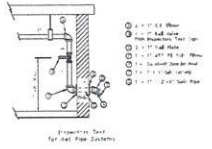
ZONE #1 FIRE SPRINKLER PLAN

DETAIL - GRID SYS INSPECTORS TEST ASSEMBLY ASIF MODEL 3111

NOTE: Refer to and State Fire Code requires the building owner to be responsible for maintaining the sprinkler system and ensure the system is kept working until it is replaced. Refer to the building code for specific fire code rules in the area of the building. The building owner is to be responsible for the maintenance of the system. The building owner is to be responsible for the maintenance of the system. The building owner is to be responsible for the maintenance of the system.

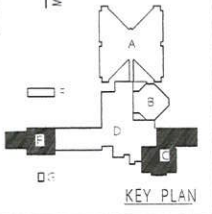
ZONES #2, #3, & #4 FIRE SPRINKLER PLAN

TOP OF STEEL AS NOTED ON PLAN
CEILING HEIGHT AS NOTED ON PLAN
ELEVATION OF PIPE = 5'-8" A.F.F. (U.N.C.)
ALL HANGERS = TYPE #24 x 4'-11" (U.N.C.)
ALL DROPS = " x 0'-5"



DROP LEGEND	
SYMB.	CEILING HEIGHT
A	8'-0" 1"x2'-5"
B	9'-0" 1"x1'-5"

TOP OF STEEL AS NOTED ON PLAN
CEILING HEIGHT AS NOTED ON PLAN
ELEVATION OF PIPE = 10'-0" A.F.F. (U.N.C.)
ALL HANGERS = TYPE #24 x 2'-3" (U.N.C.)
ALL DROPS = 1" x 0'-5" (U.N.C. SEE DROP LEGEND)



KEY PLAN

General Notes		The following are to be provided or installed by		Legend		Hangers		Sprinklers this drawing		Date		Revisions	
1	INSPECTORS TEST ASSEMBLY ASIF MODEL 3111	1	INSPECTORS TEST ASSEMBLY ASIF MODEL 3111	1	INSPECTORS TEST ASSEMBLY ASIF MODEL 3111	1	INSPECTORS TEST ASSEMBLY ASIF MODEL 3111	1	INSPECTORS TEST ASSEMBLY ASIF MODEL 3111	1	INSPECTORS TEST ASSEMBLY ASIF MODEL 3111	1	INSPECTORS TEST ASSEMBLY ASIF MODEL 3111
2	INSPECTORS TEST ASSEMBLY ASIF MODEL 3111	2	INSPECTORS TEST ASSEMBLY ASIF MODEL 3111	2	INSPECTORS TEST ASSEMBLY ASIF MODEL 3111	2	INSPECTORS TEST ASSEMBLY ASIF MODEL 3111	2	INSPECTORS TEST ASSEMBLY ASIF MODEL 3111	2	INSPECTORS TEST ASSEMBLY ASIF MODEL 3111	2	INSPECTORS TEST ASSEMBLY ASIF MODEL 3111
3	INSPECTORS TEST ASSEMBLY ASIF MODEL 3111	3	INSPECTORS TEST ASSEMBLY ASIF MODEL 3111	3	INSPECTORS TEST ASSEMBLY ASIF MODEL 3111	3	INSPECTORS TEST ASSEMBLY ASIF MODEL 3111	3	INSPECTORS TEST ASSEMBLY ASIF MODEL 3111	3	INSPECTORS TEST ASSEMBLY ASIF MODEL 3111	3	INSPECTORS TEST ASSEMBLY ASIF MODEL 3111
4	INSPECTORS TEST ASSEMBLY ASIF MODEL 3111	4	INSPECTORS TEST ASSEMBLY ASIF MODEL 3111	4	INSPECTORS TEST ASSEMBLY ASIF MODEL 3111	4	INSPECTORS TEST ASSEMBLY ASIF MODEL 3111	4	INSPECTORS TEST ASSEMBLY ASIF MODEL 3111	4	INSPECTORS TEST ASSEMBLY ASIF MODEL 3111	4	INSPECTORS TEST ASSEMBLY ASIF MODEL 3111
5	INSPECTORS TEST ASSEMBLY ASIF MODEL 3111	5	INSPECTORS TEST ASSEMBLY ASIF MODEL 3111	5	INSPECTORS TEST ASSEMBLY ASIF MODEL 3111	5	INSPECTORS TEST ASSEMBLY ASIF MODEL 3111	5	INSPECTORS TEST ASSEMBLY ASIF MODEL 3111	5	INSPECTORS TEST ASSEMBLY ASIF MODEL 3111	5	INSPECTORS TEST ASSEMBLY ASIF MODEL 3111
6	INSPECTORS TEST ASSEMBLY ASIF MODEL 3111	6	INSPECTORS TEST ASSEMBLY ASIF MODEL 3111	6	INSPECTORS TEST ASSEMBLY ASIF MODEL 3111	6	INSPECTORS TEST ASSEMBLY ASIF MODEL 3111	6	INSPECTORS TEST ASSEMBLY ASIF MODEL 3111	6	INSPECTORS TEST ASSEMBLY ASIF MODEL 3111	6	INSPECTORS TEST ASSEMBLY ASIF MODEL 3111
7	INSPECTORS TEST ASSEMBLY ASIF MODEL 3111	7	INSPECTORS TEST ASSEMBLY ASIF MODEL 3111	7	INSPECTORS TEST ASSEMBLY ASIF MODEL 3111	7	INSPECTORS TEST ASSEMBLY ASIF MODEL 3111	7	INSPECTORS TEST ASSEMBLY ASIF MODEL 3111	7	INSPECTORS TEST ASSEMBLY ASIF MODEL 3111	7	INSPECTORS TEST ASSEMBLY ASIF MODEL 3111
8	INSPECTORS TEST ASSEMBLY ASIF MODEL 3111	8	INSPECTORS TEST ASSEMBLY ASIF MODEL 3111	8	INSPECTORS TEST ASSEMBLY ASIF MODEL 3111	8	INSPECTORS TEST ASSEMBLY ASIF MODEL 3111	8	INSPECTORS TEST ASSEMBLY ASIF MODEL 3111	8	INSPECTORS TEST ASSEMBLY ASIF MODEL 3111	8	INSPECTORS TEST ASSEMBLY ASIF MODEL 3111
9	INSPECTORS TEST ASSEMBLY ASIF MODEL 3111	9	INSPECTORS TEST ASSEMBLY ASIF MODEL 3111	9	INSPECTORS TEST ASSEMBLY ASIF MODEL 3111	9	INSPECTORS TEST ASSEMBLY ASIF MODEL 3111	9	INSPECTORS TEST ASSEMBLY ASIF MODEL 3111	9	INSPECTORS TEST ASSEMBLY ASIF MODEL 3111	9	INSPECTORS TEST ASSEMBLY ASIF MODEL 3111
10	INSPECTORS TEST ASSEMBLY ASIF MODEL 3111	10	INSPECTORS TEST ASSEMBLY ASIF MODEL 3111	10	INSPECTORS TEST ASSEMBLY ASIF MODEL 3111	10	INSPECTORS TEST ASSEMBLY ASIF MODEL 3111	10	INSPECTORS TEST ASSEMBLY ASIF MODEL 3111	10	INSPECTORS TEST ASSEMBLY ASIF MODEL 3111	10	INSPECTORS TEST ASSEMBLY ASIF MODEL 3111

Brewer & Company
LAKIN CORRECTIVAL FACILITY FOR WOMEN

DATE: 11/15/2002
DRAWN BY: [Name]
CHECKED BY: [Name]
SCALE: 1/8" = 1'-0"

3 of 7

ADDENDUM ACKNOWLEDGEMENT FORM
SOLICITATION NO.: LCF22112

Instructions: Please acknowledge receipt of all addenda issued with this solicitation by completing this addendum acknowledgment form. Check the box next to each addendum received and sign below. Failure to acknowledge addenda may result in bid disqualification.

Acknowledgment: I hereby acknowledge receipt of the following addenda and have made the necessary revisions to my proposal, plans and/or specification, etc.

Addendum Numbers Received:

(Check the box next to each addendum received)

- | | |
|---|--|
| <input type="checkbox"/> Addendum No. 1 | <input type="checkbox"/> Addendum No. 6 |
| <input type="checkbox"/> Addendum No. 2 | <input type="checkbox"/> Addendum No. 7 |
| <input type="checkbox"/> Addendum No. 3 | <input type="checkbox"/> Addendum No. 8 |
| <input type="checkbox"/> Addendum No. 4 | <input type="checkbox"/> Addendum No. 9 |
| <input type="checkbox"/> Addendum No. 5 | <input type="checkbox"/> Addendum No. 10 |

I understand that failure to confirm the receipt of addenda may be cause for rejection of this bid. I further understand that that any verbal representation made or assumed to be made during any oral discussion held between Vendor's representatives and any state personnel is not binding. Only the information issued in writing and added to the specifications by an official addendum is binding.

Company

Authorized Signature

Date

NOTE: This addendum acknowledgment should be submitted with the bid to expedite document processing.