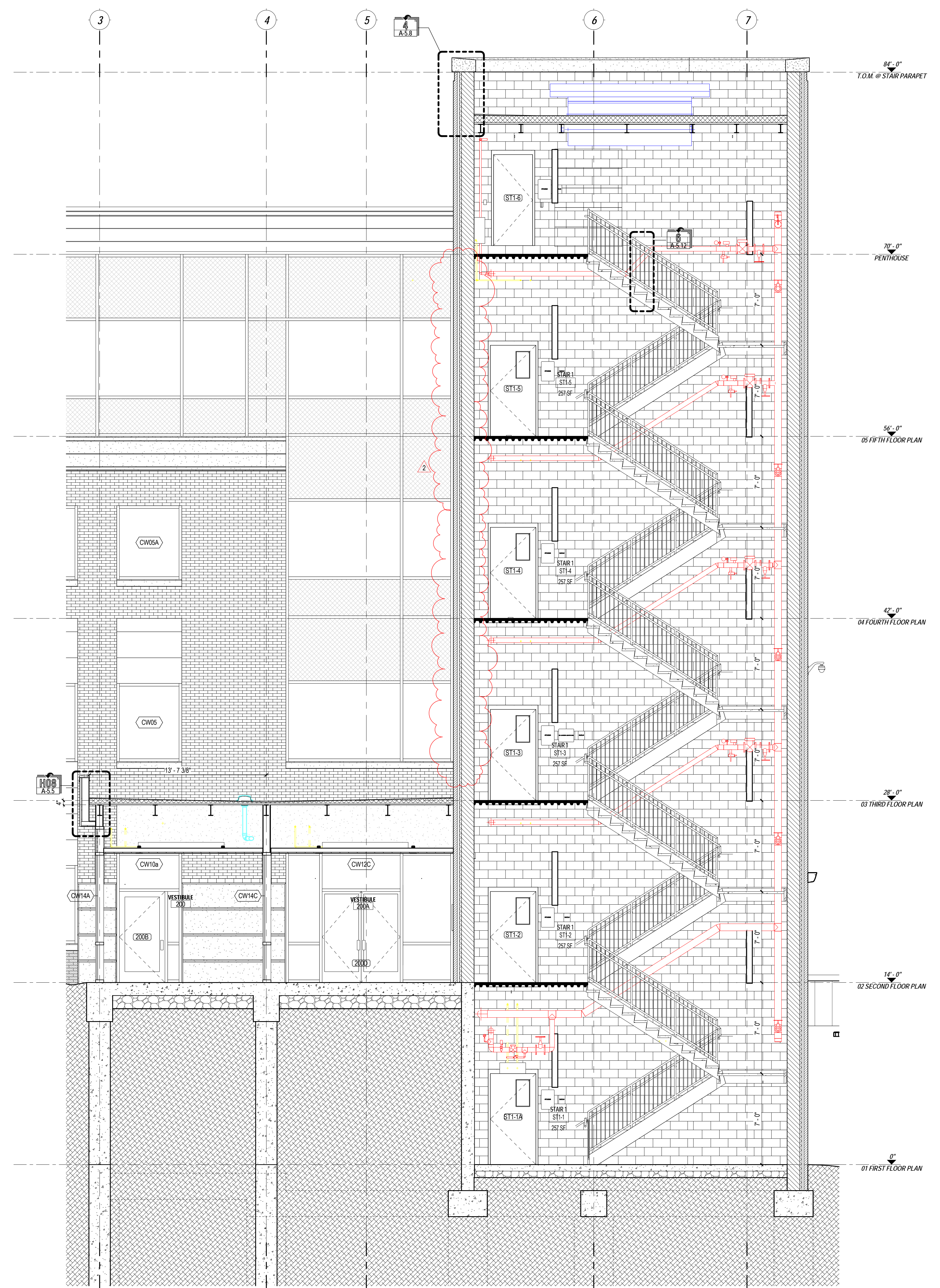


BUILDING SECTION 9.1
SCALE: 1/4" = 1'-0"
SHEET: A-3.9



BUILDING SECTION 9.2
SCALE: 1/4" = 1'-0"
SHEET: A-3.9

ATTACHMENT X
2 5/10/13 Addendum 2
REVISIONS

NEW STATE OFFICE
BUILDING - FAIRMONT
STATE OF WEST VIRGINIA
416 ADAMS STREET
FAIRMONT, WV
BID DOCUMENTS
3/8/2013

omni
associates
architects
1543 FAIRMONT AVENUE
FAIRMONT, WV 26534
(toll free) 855.367.1417
omniassociates.com



BUILDING SECTION

A-3.9

COPYRIGHT © ALL RIGHTS RESERVED. REPRODUCTION IN WHOLE OR IN PART IS PROHIBITED. THIS DRAWING IS AN INSTRUMENT OF SERVICE. THE PROPERTY OF THE ARCHITECT. NO PART MAY BE USED IN ANY MANNER WITHOUT THE WRITTEN PERMISSION OF THE FIRM. PROJECT No. 20866 DRAWN BY: M. CAHILL