

**LEGEND:**

- UTILITY WELL
- BURIED TV CABLE
- BURIED ELECTRIC
- BURIED COMMUNICATIONS LINE
- ⊗ STORM SEWER MANHOLE
- BURIED WATER LINE
- ⊕ WATER VALVE
- ⊕ FIRE HYDRANT
- AERIAL ELECTRIC LINE
- AERIAL TV CABLE
- AERIAL TELEPHONE CABLE
- AERIAL FIBER OPTIC LINE
- BURIED GAS LINE
- ⊕ GAS VALVE
- SANITARY SEWER LINE
- ⊕ SANITARY SEWER MANHOLE
- ⊕ GROUND LEVEL LIGHT
- ⊕ FLOOD LIGHT
- ⊕ TREE
- ⊕ SMALL TREE / SHRUB
- CABLE BARRIER
- ⊕ CONTROL POINT
- CHAIN LINK FENCE
- TELEPHONE (OVERHEAD)
- ⊕ BOLLARD
- ⊕ LIGHT POLE
- ⊕ UTILITY POLE

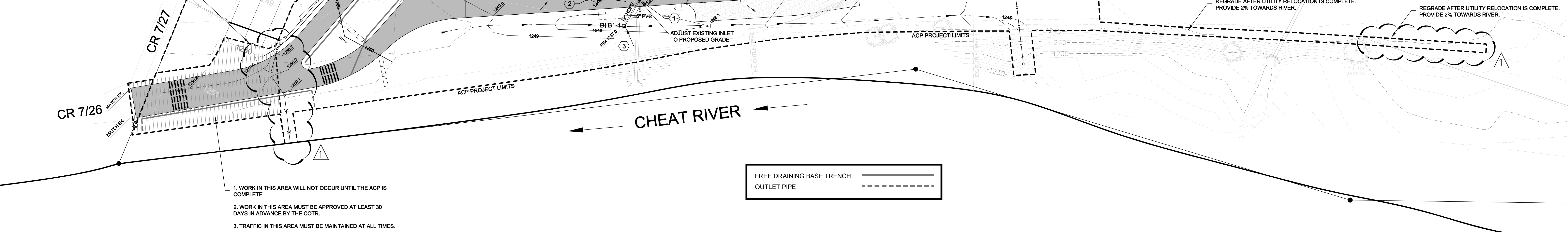
**INLET KEY**

- ① MODIFIED INLET - SEE DETAIL 2 SHT. C503
- ② TYPE B INLET - SEE DETAIL 1 SHT. C503
- ③ 12" YARD DRAIN - SEE DETAIL 3 SHT. C503
- ④ TYPE G INLET (MODIFIED) - SEE DETAIL 2 SHT. C503

**STRUCTURE COORDINATES**

DROP INLET	NORTHING	EASTING
A1	N 347123.25	E 1921977.11
A1-1	N 347043.25	E 1921910.32
A1-1A	N 347053.02	E 1921903.56
A1-2	N 346959.43	E 1921818.84
A2	N 347163.36	E 1922006.64
A2-1	N 347188.97	E 1921971.73
A2-2	N 347199.64	E 1921957.23
A2-3	N 347210.30	E 1921942.72
A3	N 347218.68	E 1922047.94
A4	N 347278.88	E 1922053.20
B1	N 347190.64	E 1921910.85
B1-1	N 347206.88	E 1921909.26

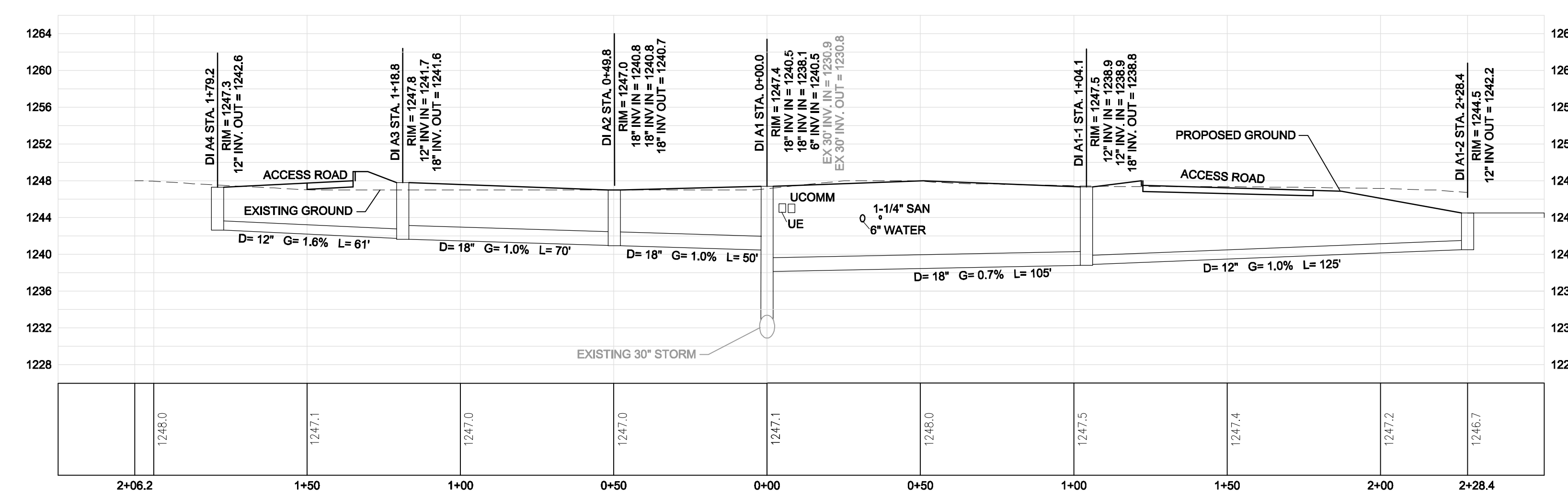
TRANSITION ELEVATIONS FROM NEW ACP ROAD TO TEMPORARY CONSTRUCTION ENTRANCE WITH WEARING COURSE ASPHALT AT A MAXIMUM 5% SLOPE



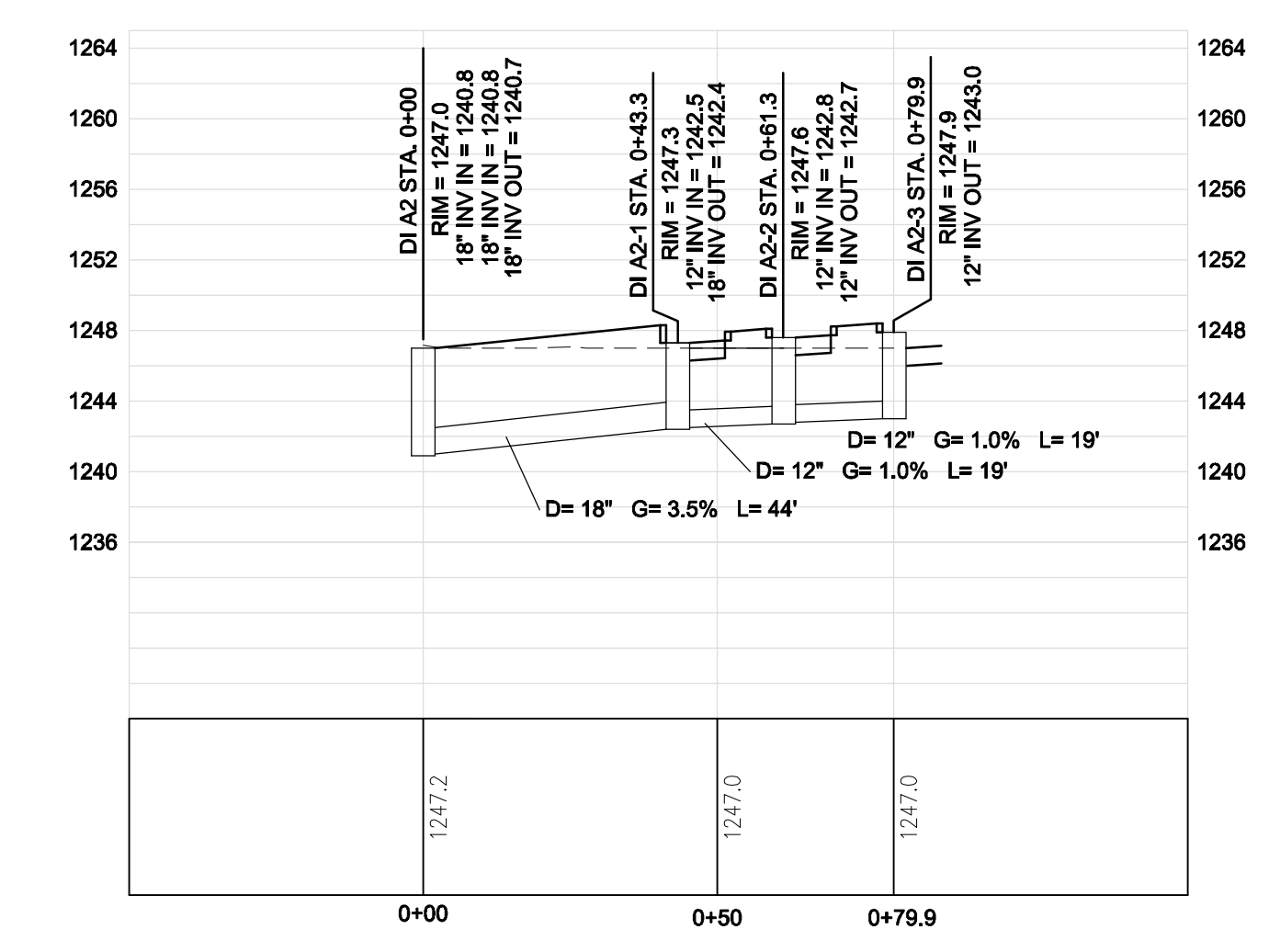
1. WORK IN THIS AREA WILL NOT OCCUR UNTIL THE ACP IS COMPLETE
2. WORK IN THIS AREA MUST BE APPROVED AT LEAST 30 DAYS IN ADVANCE BY THE COTR.
3. TRAFFIC IN THIS AREA MUST BE MAINTAINED AT ALL TIMES.

**STORMWATER STRUCTURE SCHEDULE**

NO.	RIM EL.	INVERT IN	INVERT IN	INVERT IN	INVERT OUT
A1	1247.4	18" 1240.5	18" 1238.1		EX. 1230.9
A1-1	1247.5	12" 1238.9	12" 1238.9		EX. 1238.8
A1-1A	1247.5	12" 1238.9	12" 1238.9		EX. 1243.5
A1-2	1244.5				EX. 1242.2
A2	1247.0	18" 1240.8	18" 1240.8		EX. 1240.7
A2-1	1247.3	12" 1242.5			EX. 1242.4
A2-2	1247.6	12" 1242.8			EX. 1242.7
A2-3	1247.9				EX. 1243.0
A3	1247.8	12" 1241.7			EX. 1241.6
A4	1247.3				EX. 1242.6
B1	ADJUST TO PROPOSED	EX. 1230.4	12" 1242.5	6" 1242.5	EX. 1230.3
B1-1	1247.0				EX. 1243.0



**STORM LINE 'A'**  
VERTICAL SCALE: 1" = 10'  
HORIZONTAL SCALE: 1" = 30'



**STORM LINE 'A2'**  
VERTICAL SCALE: 1" = 10'  
HORIZONTAL SCALE: 1" = 30'

CLIENT  
ARMY NATIONAL GUARD  
JOINT INTERAGENCY TRAINING AND EDUCATION CENTER  
ARMY NATIONAL GUARD CAMP DAWSON  
WEST VIRGINIA

DESIGNERS  
**AECOM**  
AECOM SERVICES, INC.  
3101 WILSON BOULEVARD  
ARLINGTON, VIRGINIA  
F:703-682-4900 F:703-682-4901 www.aecom.com

**CEI**  
Capitol Engineering, Inc.  
1208 KANAWHA BLVD E.  
CHARLESTON, WEST VIRGINIA  
F:304-344-0720 F:304-344-0820 www.capitolengineering.com

STATUS 01/18/2013 ADDENDUM #3  
ISSUE  
1/18/13 ADDED SPOTS AT GATE, AND EXPANDED GRADING AREA  
09/24/2012 FINAL BIDDING DOCS

PROJECT NO. 60051603  
DRAWN BY:  
CHECKED BY:

KEY PLAN

SHEET TITLE

GRADING, DRAINAGE & STORM PROFILE

C3.0

© 2009 AECOM SERVICES, INC.