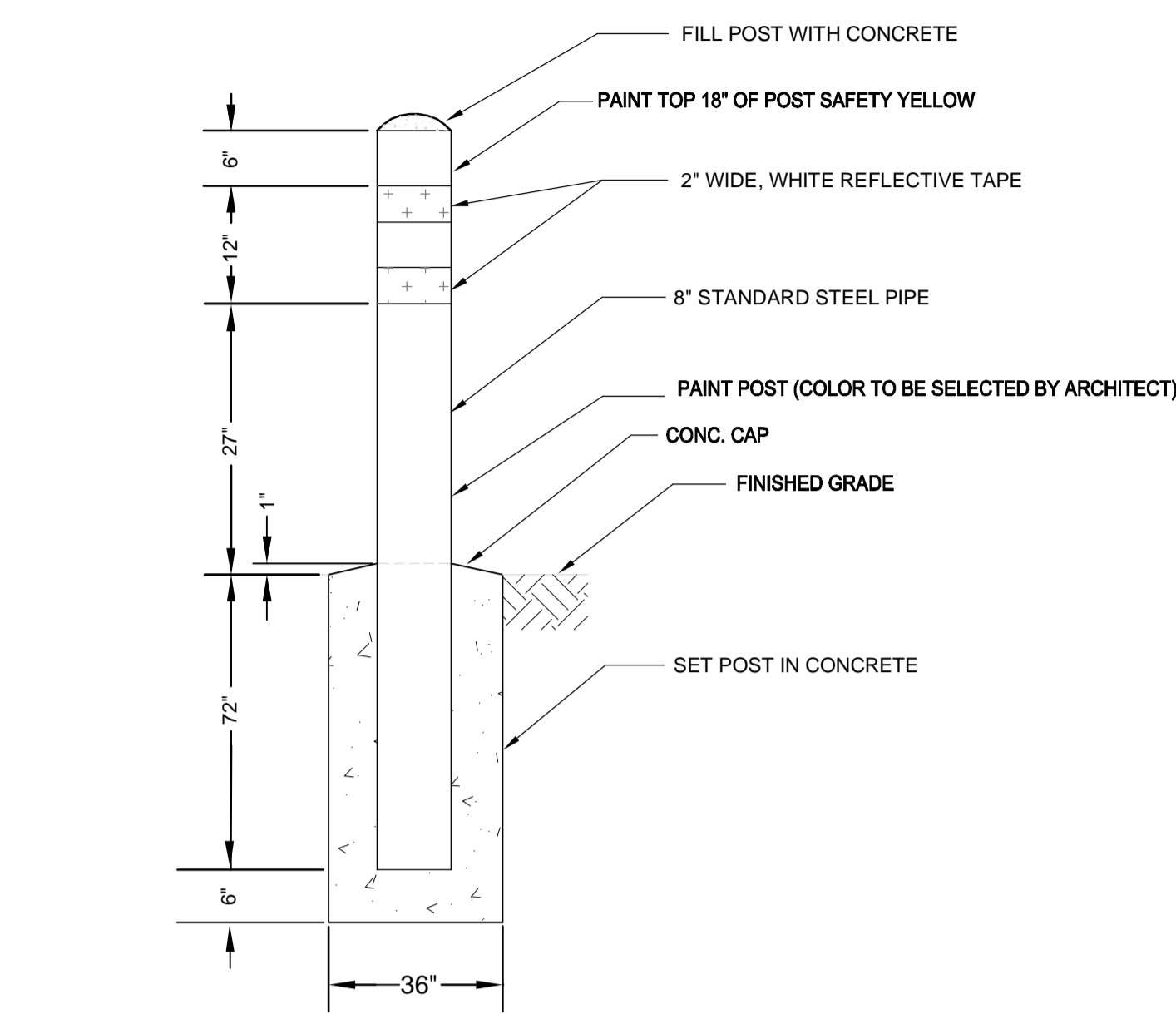
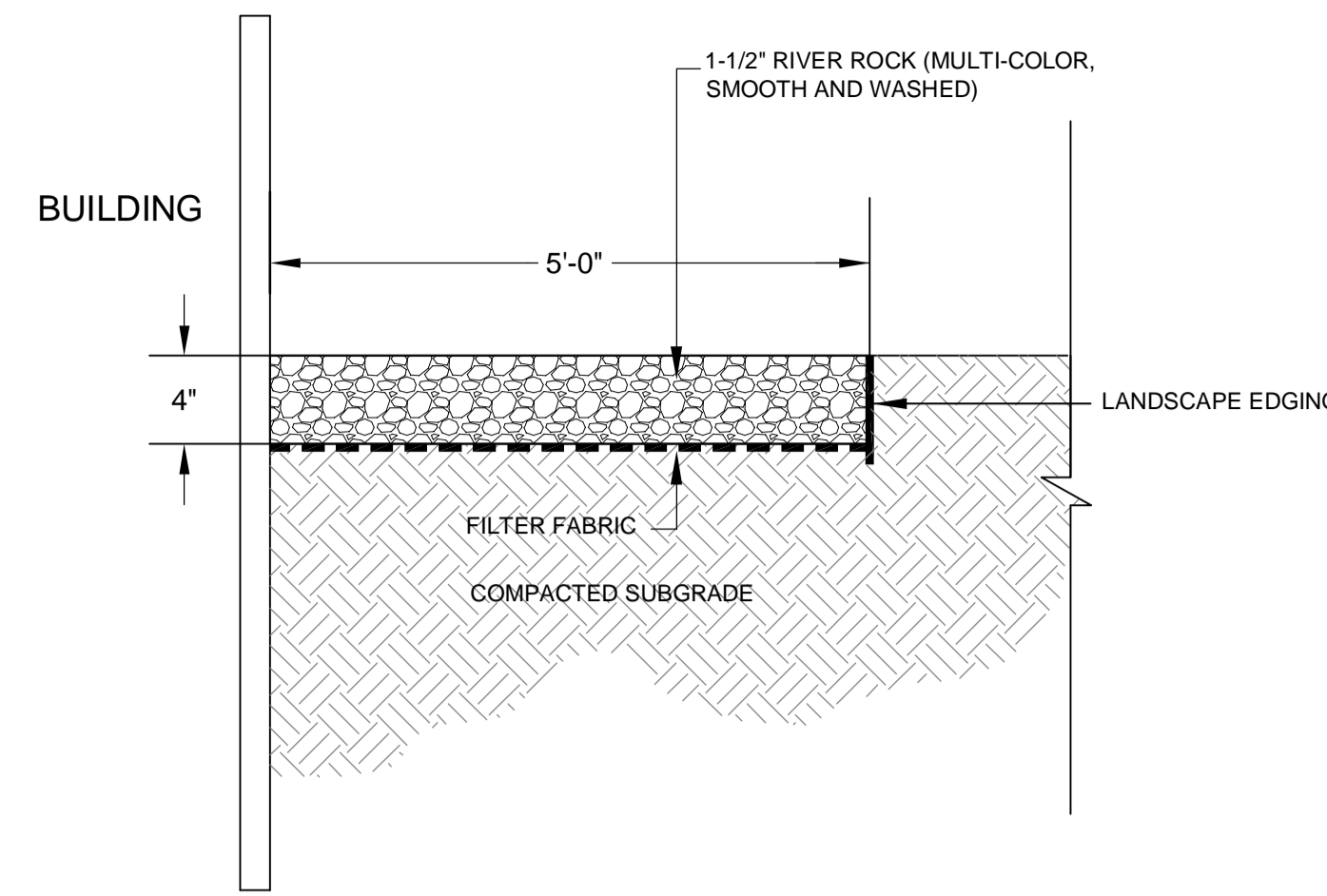


Drawing Revisions	
No.	Date
1	8-6-12 REVISED DETAIL 3
2	9-5-12 MARKED THROUGH DETAILS NOT INCLUDED IN PROJECT

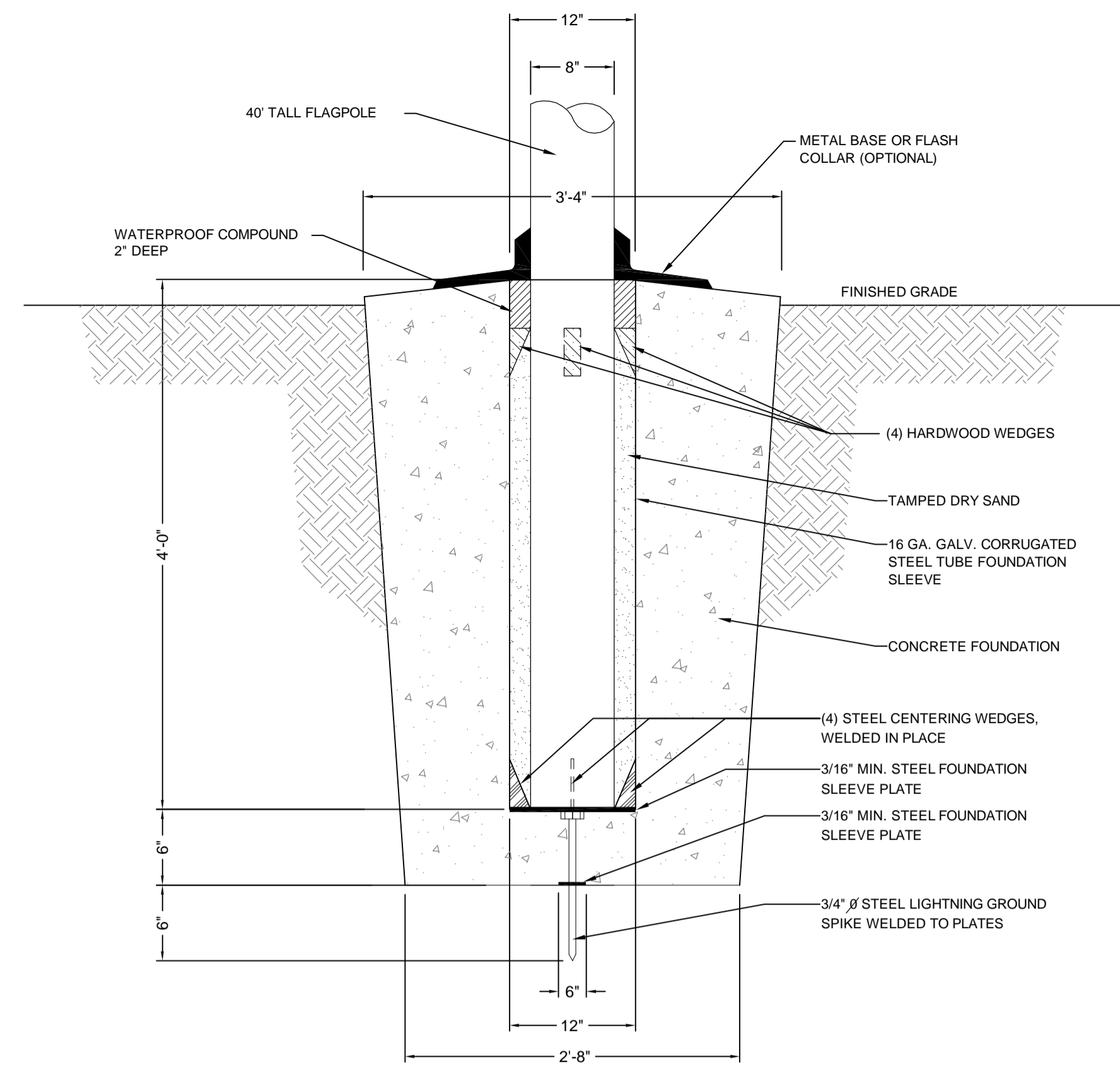
- APPROVED DRAWING USE:**
- DESIGN DEVELOPMENT
 - PROGRESS
 - PERMIT ACQUISITION
 - FOR BIDDING
 - CONSTRUCTION DOCUMENT



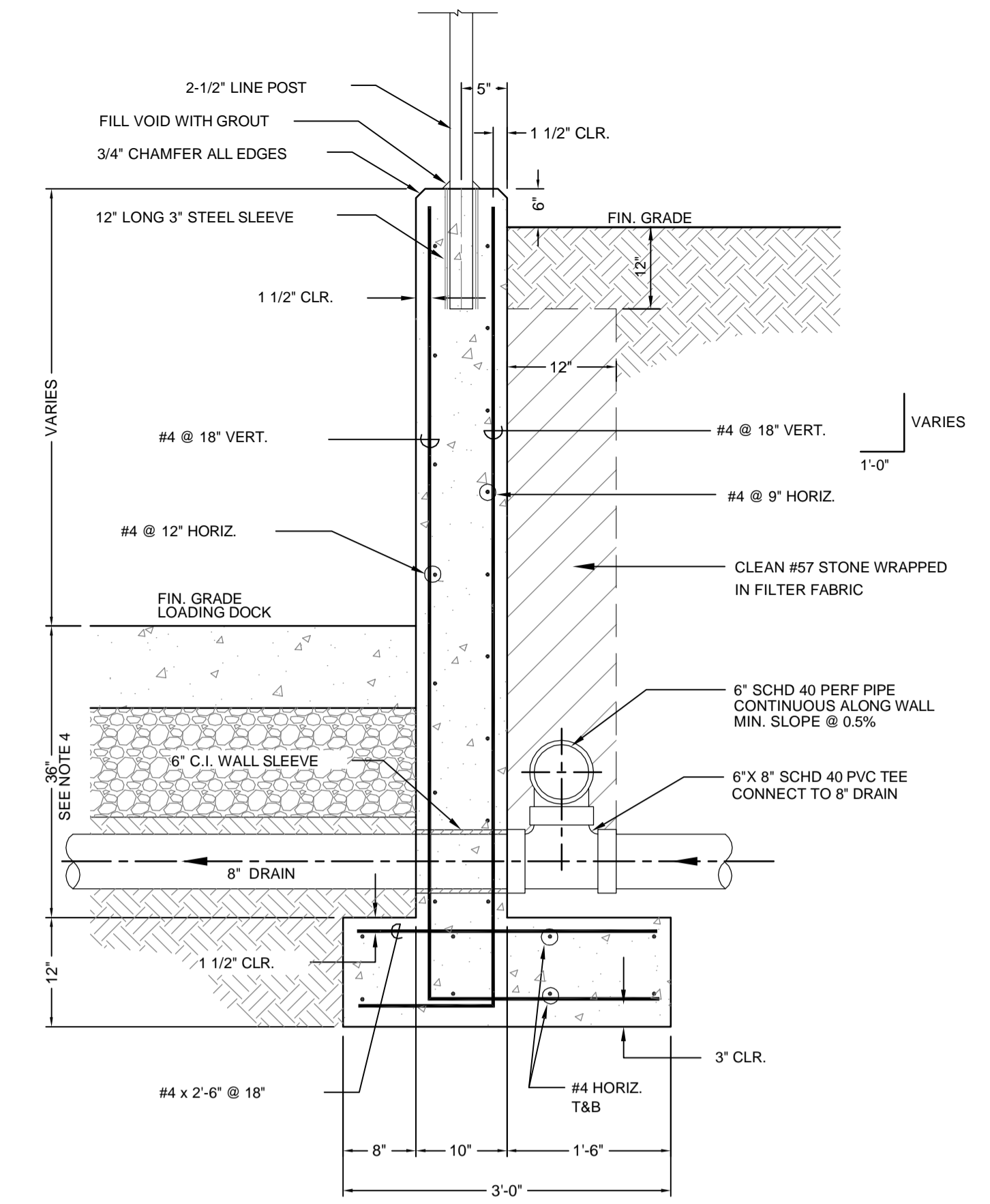
1 8" BOLLARD DETAIL
 C2-12 N.T.S.



4 MAINTENANCE STRIP/ STONE MULCH
 C2-12 NO SCALE

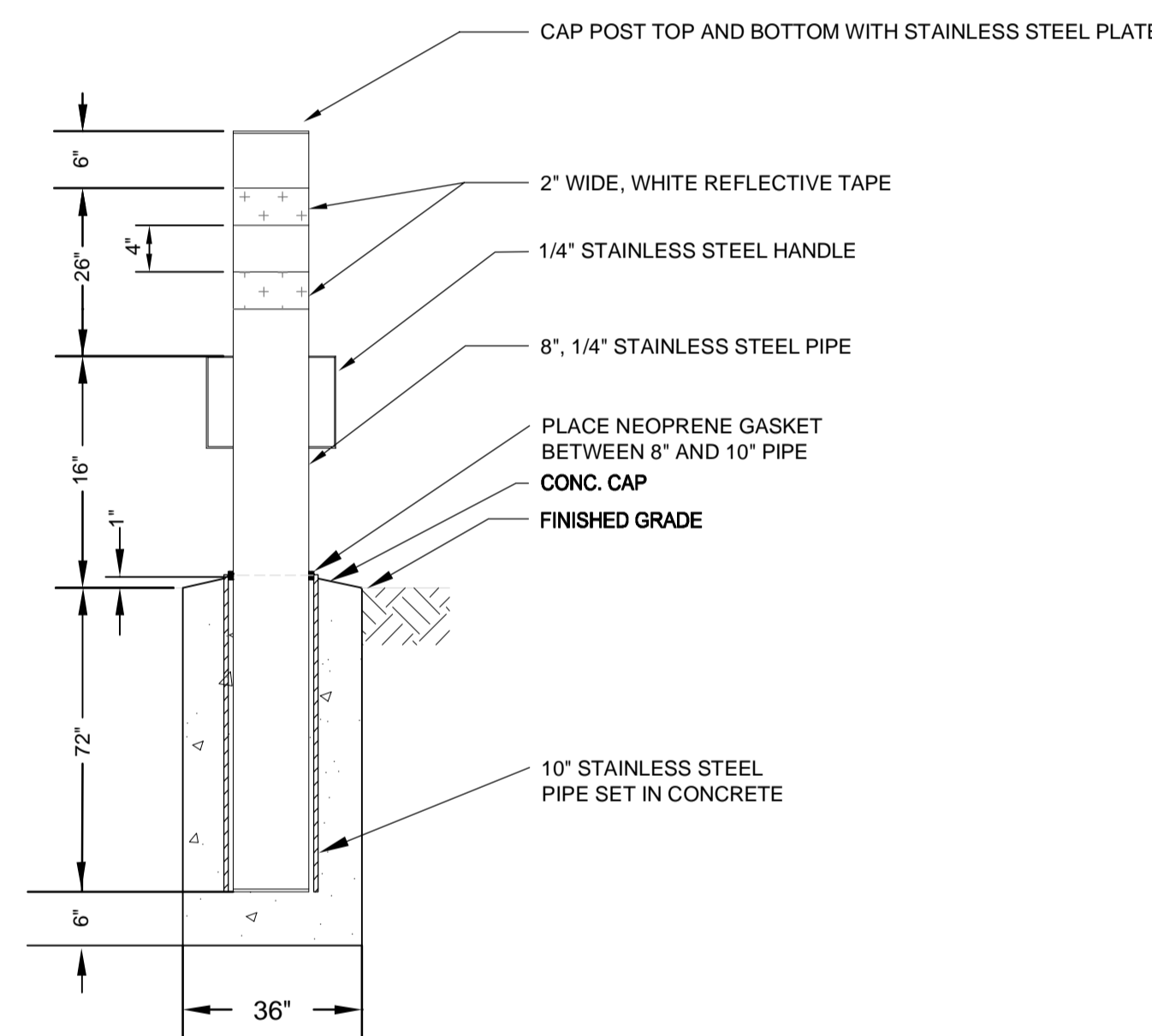


7 40' TALL FLAGPOLE DETAIL
 C2-12 NO SCALE

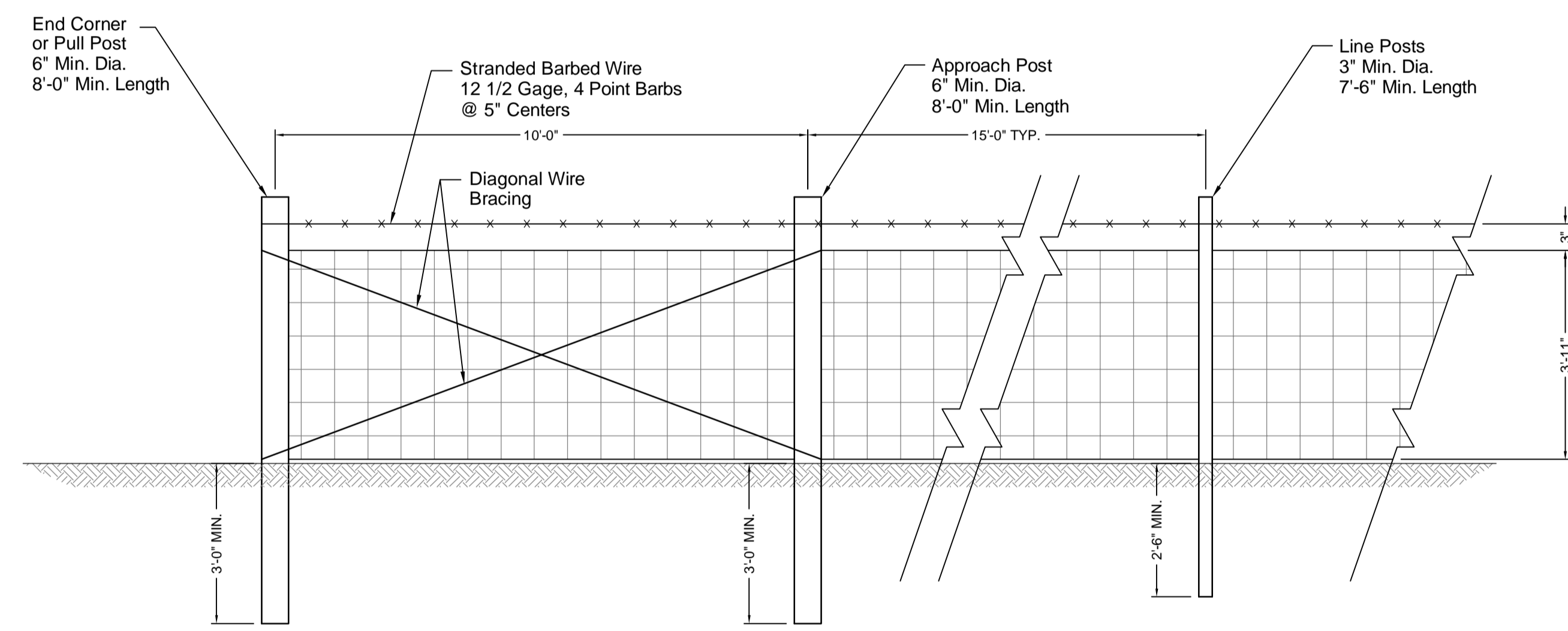


- NOTES:**
- WALL IS TO BE BACKFILLED EQUALLY ON BOTH SIDES OF WALL AND COMPACTED TO THE SUBGRADE LEVEL PRIOR TO PLACEMENT OF FILL HIGH ON STEM.
 - ALL REBAR LAPPED 30 BAR DIAMETERS (MIN).
 - PROVIDE 1/2" ASPHALT-SATURATED CELLULOSIC FIBER EXPANSION JOINT BETWEEN BUILDING AND WALL END.
 - STEP FOOTER AS NEEDED TO MAINTAIN 36" DEPTH BELOW FINISHED GRADE AND TO TIE INTO LOADING DOCK FOOTER.
 - EXCAVATION SHALL NOT BE LEFT EXPOSED MORE THAN 4 HOURS.

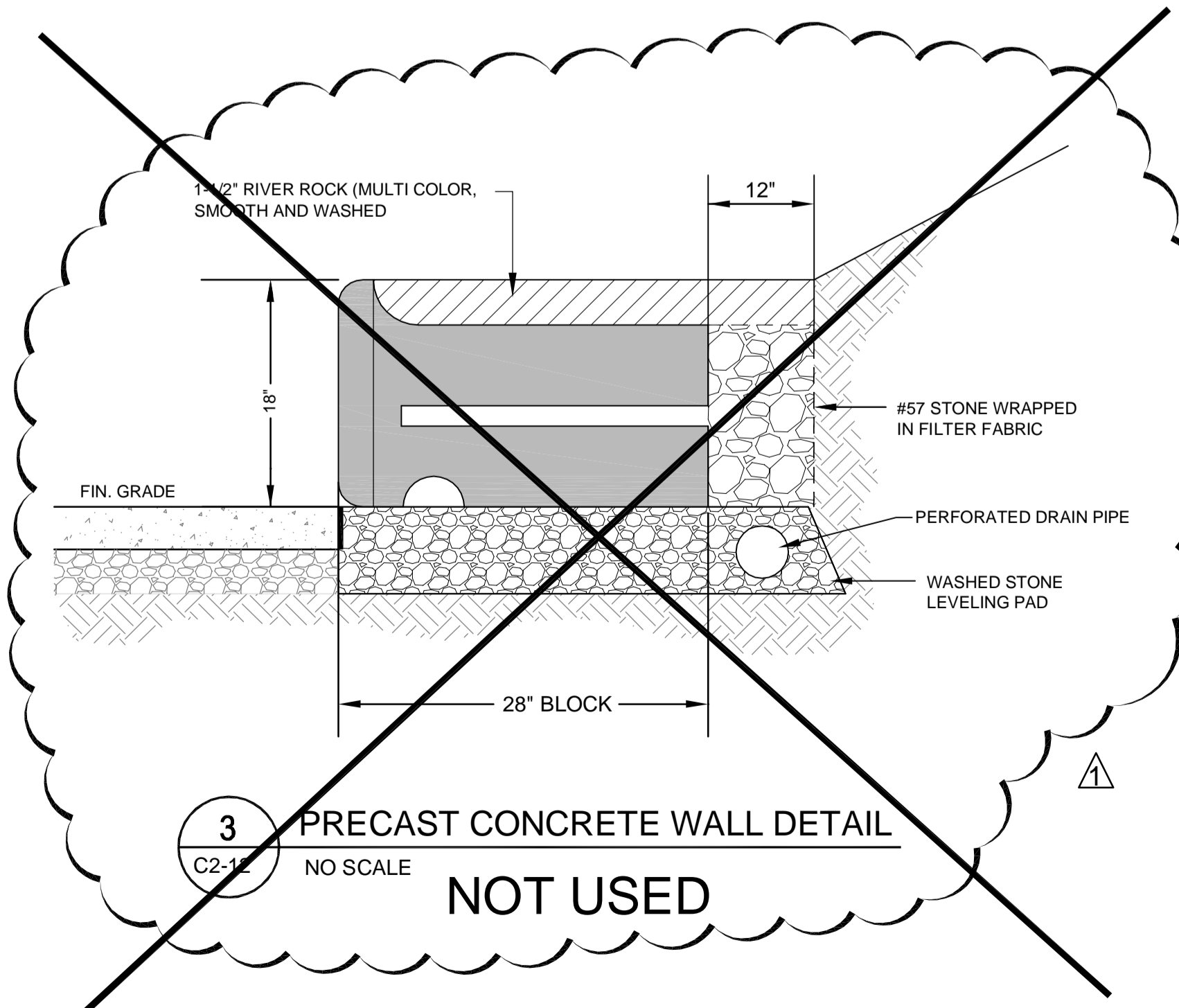
8 LOADING DOCK WALL DETAIL
 C2-12 NO SCALE



2 REMOVABLE BOLLARD DETAIL
 C2-12 N.T.S.

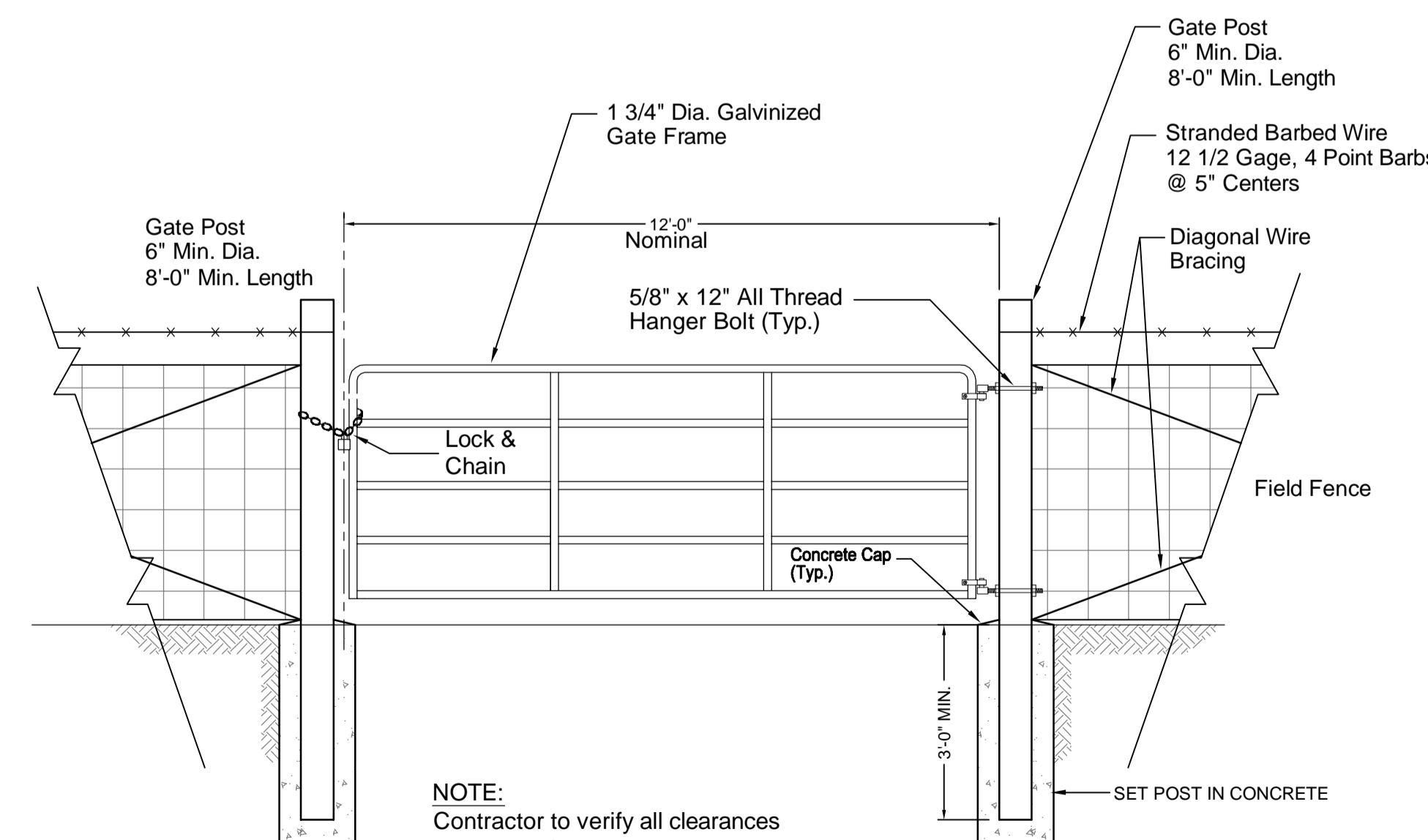


5 FIELD FENCE DETAIL
 C2-12 NO SCALE



3 PRECAST CONCRETE WALL DETAIL
 C2-12 NO SCALE

NOT USED



6 FARM (FIELD FENCE) GATE DETAIL
 C2-12 NO SCALE

NOTE:
 Contractor to verify all clearances necessary for complete and unobstructed swing operation of both gate leaves.