

NOTE:
 1. RAILING IS TO BE FABRICATOR /
 MANUFACTURER ENGINEERED

1 HANDRAIL SECTION ADD02 (5/A-6.1)

SKA004

SCALE: 1 1/2" = 1'-0" REF. VIEW: A-6.1

ADDENDUM 02



WVARNG

BUCKHANNON

AFRC

HANDRAIL SECTION ADD02 (5/A-6.1)

DRAWN BY: gam
 PROJECT #: 21117
 DATE: 2012 AUG 09

SKA004

Appendix G

1. Notes for constructing the Arms Vault Rooms 109C and 114C.

- a. **Walls.** Walls will be of 8 inches of concrete reinforced with No. 4 reinforcing bars at 9 inches on center in each direction in each face of the wall. Reinforcement in the two faces of the wall will be staggered on each face to form a projected grid approximately 4-1/2 inches square. Reinforcement in the walls will be tied into floors and ceilings in accordance with American Concrete Institute standards.
- b. **Ceiling and roofs.** Ceilings and roofs will be of reinforced concrete construction. The thinnest portion may not be less than 6 inches. Reinforcing bar spacing will form a grid so that the area of any opening does not exceed 96 square inches using No. 4 bars or larger.
- c. **Floors.** Floors, of on grade, will be a minimum of 6-inch thick reinforced concrete construction reinforced with 6 inches by 6 inches, W4 by W4 welded wire fabric or equivalent steel reinforcing bars (based on area of steel per square foot). Where the floor slab acts as the ceiling of an underlying room or area, the ceiling standards will apply. Where equivalent steel reinforcing bars are used, bar spacing will form a grid so that the area of any opening does not exceed 96 square inches.
- d. **Doors and door frames.** The door will be GSA approved Class 5 armory door per GSA Fed Spec AA-D-600D(4). A GSA approved Class 5 vault door is not encouraged due to its electromechanical lock. Double door protection for arms storage facilities is not required. Door frames will be per Fed Spec AA-D-600D(4).
- e. **Windows and other openings.** Windows are not authorized. Ducts, vents, and other openings of 96 square inches or more with the least dimension greater than 6 inches will be secured in accordance with one of the following methods and otherwise limited to the minimum number and size that are essential:
 - (1) Sealed with material comparable to that forming the adjacent walls.
 - (2) Fitted with any of the barriers below with bars or steel mesh securely embedded in the structure of the building or welded to a steel frame that will be securely attached to the wall with fastenings inaccessible from the exterior of arms storage facility.
 - (a) Three-eighth inch or larger hardened steel bars with vertical bars not more than 4 inches apart and with horizontal bars welded to the vertical bars so that the openings do not exceed 32 square inches.
 - (b) A minimum of 8-gauge high carbon manganese steel mesh with 2-inch diamond grid.
 - (c) A 6-gauge cold drawn steel wire mesh with 2-inch diamond grid when 8-gauge mesh above is not available.

APPENDIX G TO BE COORDINATED BETWEEN SHEETS S-2.2, A-6.4, H-1.4 & H-3.2

ADDENDUM 02



WVARNG

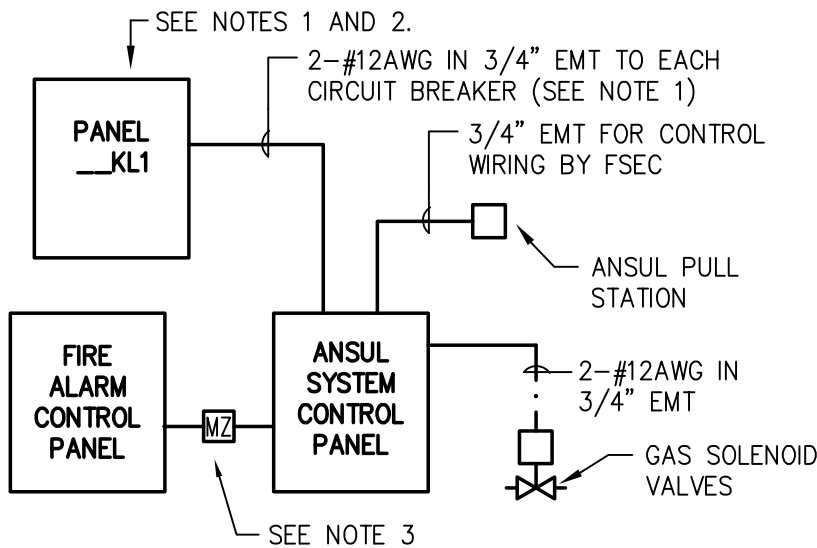
BUCKHANNON

AFRC

VAULT NOTES - APPENDIX G - ADD02 (A-6.4)

DRAWN BY: gam
PROJECT #: 21117
DATE: 08/09/12

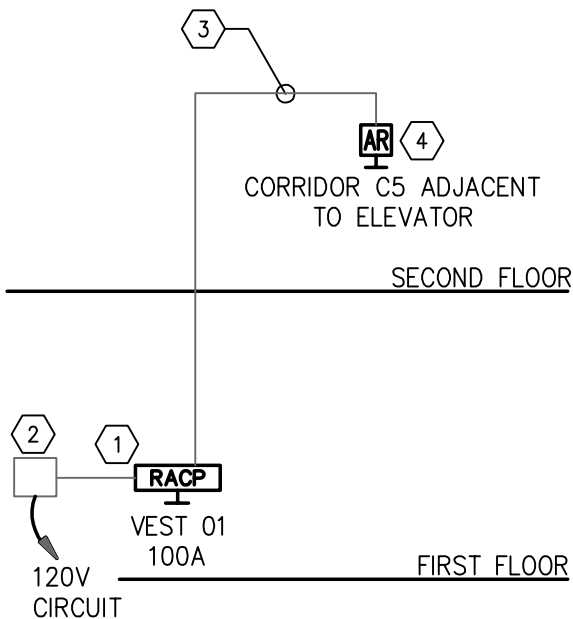
SKA006



NOTES:

1. PROVIDE SHUNT TRIP BREAKERS FOR ALL ITEMS UNDER HOODS.
2. CONNECT TO SHUNT TRIP CIRCUIT BREAKERS IN PANELBOARD(S) __KL1.
3. PROVIDE ADDRESSABLE MONITORING MODULE FOR EACH ANSUL SYSTEM CONTROL PANEL FOR CONNECTION TO BUILDING FIRE ALARM SYSTEM.

10 ANSUL SYSTEM INTERCONNECT WIRING DIAGRAM
E5.1 NOT TO SCALE



CODED NOTES: (AREA OF REFUGE RISER)

- ① AREA OF REFUGE ANNUNCIATOR WITH 4-ZONES AS SHOWN FOR CALL STATIONS – CORNELL MODEL NO. A4228 OR APPROVED EQUIVALENT. MOUNT 48" AFF TO TOP OF BOX. FACTORY SHALL LABEL EACH ZONE AS DESCRIBED ON THIS RISER. RECESS ANNUNCIATOR IN WALL. PROVIDE ANNUNCIATOR WITH TELEPHONE ACCESS KIT, TAK4200 OR EQUAL, FOR AUTO-DIALER FUNCTIONALITY.
- ② BATTERY BACK-UP / POWER SUPPLY FOR AREA OF REFUGE ANNUNCIATOR CORNELL MODEL NO. C5243 OR APPROVED EQUIVALENT. SURFACE MOUNT ABOVE THE FINISHED CEILING IN VESTIBULE. PROVIDE 18AWG, 2 CONDUCTOR WIRING BETWEEN BATTERY BACK-UP AND ANNUNCIATOR AND CONCEAL WIRING IN WALL.
- ③ WIRING FROM AREA OF REFUGE CALL STATION TO ANNUNCIATOR SHALL BE 22AWG, 4 CONDUCTOR PLENUM RATED WIRING IN 3/4". ROUTE WIRING CONCEALED.
- ④ AREA OF REFUGE CALL STATION WITH INSTRUCTIONS FOR USE OF COMMUNICATOR – CORNELL MODEL NO. 4201B OR APPROVED EQUIVALENT, MOUNT 48" AFF TO TOP OF BOX. RECESS CALL STATION IN WALL.

11 AREA OF REFUGE RISER DIAGRAM
E5.1 NOT TO SCALE