

**CAMP
WASHINGTON
CARVER
PERFORMING
ARTS
STAGE &
SUPPORT
BUILDING**

Clifftop, WV

job number: 1083
date: 5/21/2012

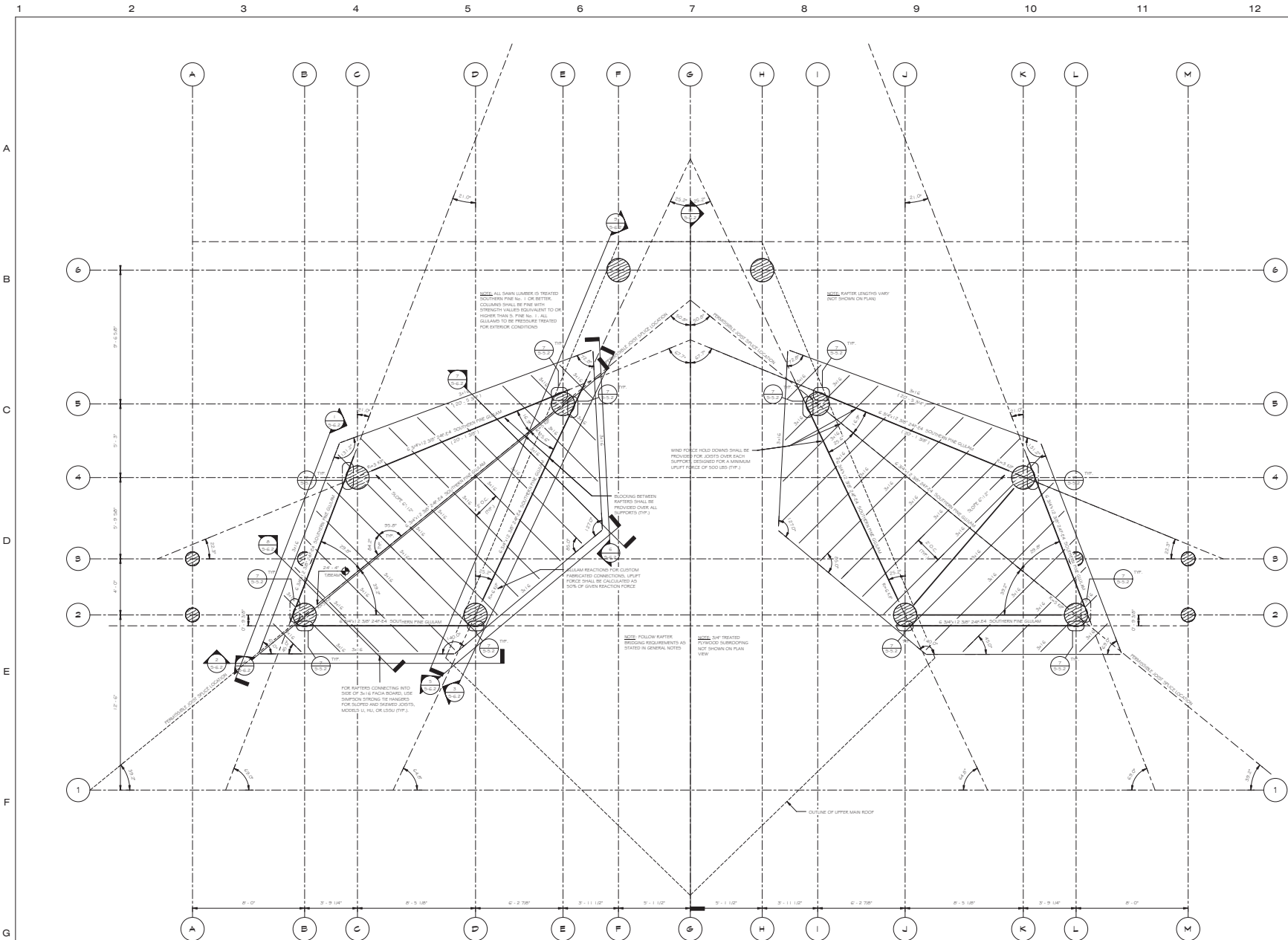
sheet title:
STAGE LOWER ROOF

sheet number:
S-3.1

drawn by: DS
checked by: DMS

©Copyright 2009
Paradigm Architecture

10/17/2012 4:35:19 PM



1 Bot. Low Roof
SCALE 3/8" = 1'-0"

- NOTES:
- REFERENCE ELEVATION = 0'-0" (GROUND LEVEL). ELEVATIONS SHOWN IN PARENTHESES REPRESENT TWOOD
 - REINFORCEMENT FOR CUSTOM PROPOSED GULLAM CONNECTIONS ARE SHOWN ON PLAN. UPLIFT FORCES SHALL BE CALCULATED AS BEING 25% OF GIVEN REACTION FORCE FOR LOWER STAGE ROOFS ONLY
 - RAFTER LENGTHS VARY AND ARE LISTED AND NOT SHOWN ON PLAN
 - BRACING BETWEEN JOISTS SHALL BE PROVIDED OVER ALL SUPPORTS (ETP.)
 - WIND FORCE HOLD DOWN SHALL BE PROVIDED FOR JOISTS OVER EACH SUPPORT, DESIGNED FOR A MINIMUM UPLIFT FORCE OF 500 LBS FOR LOWER STAGE ROOFS ONLY
 - RAFTERS SHALL ONLY BE SHOWN AT THE PERMISSIBLE SPICE LOCATIONS AS NOTED ON PLAN VIEW
 - CONNECTIONS TO BE SHOWN BY CONNECTION ENGINEER THAT ARE SHOWN ON THIS PLAN VIEW INCLUDE:
 - GULLAM BEAMS INTO FACE OF ROUND SHAIN LUMBER COLUMN
 - WIND FORCE HOLD DOWNS FOR ALL JOISTS OVER SUPPORT LOCATIONS
 - GULLAM FOR TENSION CABLES ATTACHED TO JOIST COLLAR (NOT SHOWN)
 - FOR JOISTS CONNECTING INTO SIDE OF 3/4" PITCH BOARD, USE SIMPSON STRONG-TIE HANGERS FOR SLOPED AND SHOWN JOISTS, MODELS U, HL, OR LDUU (ETP.)
 - ALL SHAIN LUMBER SHALL BE SOUTHERN PINE No. 1 OR BETTER. COLLAR SHALL BE TREATED PINE WITH STRENGTH VALUES EQUIVALENT TO OR HIGHER THAN SOUTHERN PINE No. 1 CONSTRUCTION GRADE
 - COLLAR BRACKETS BEHIND BRACKETS SHALL BE SHOWN ON THIS PLAN VIEW