



**Construction Documents**

revisions:  
1 170112 Addendum 1

**Camp Washington Carver Performing Arts Stage & Support Building**  
Clifftop, WV

job number: 1083  
date: 21MAY12

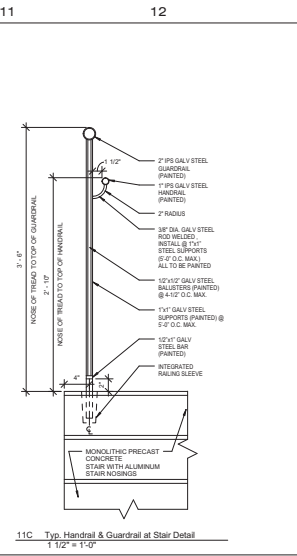
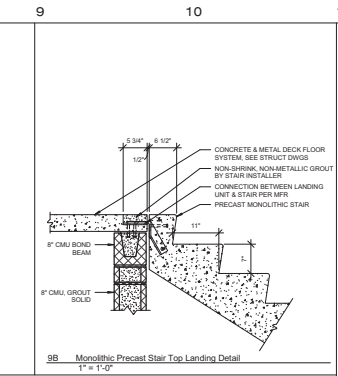
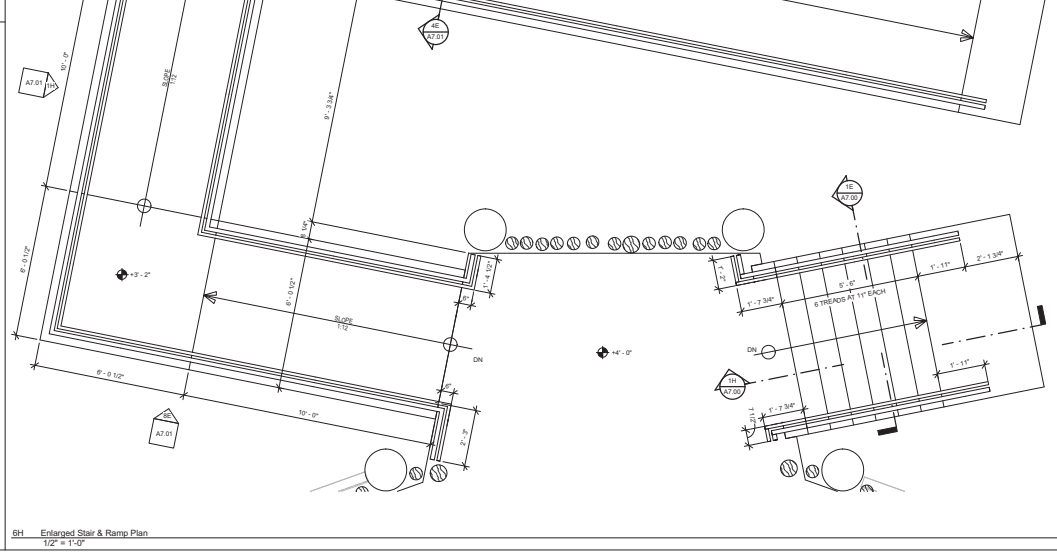
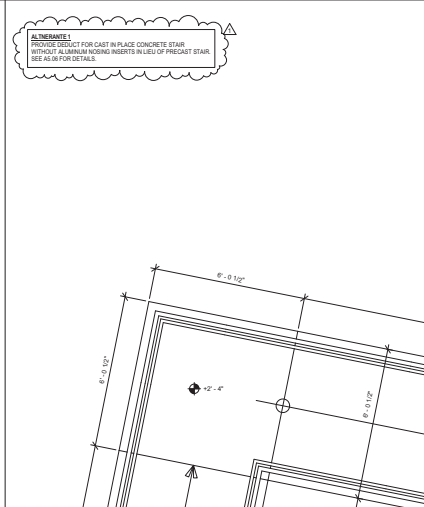
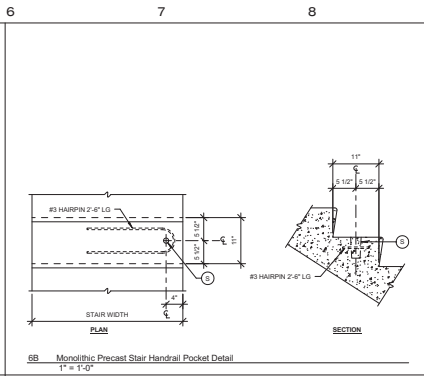
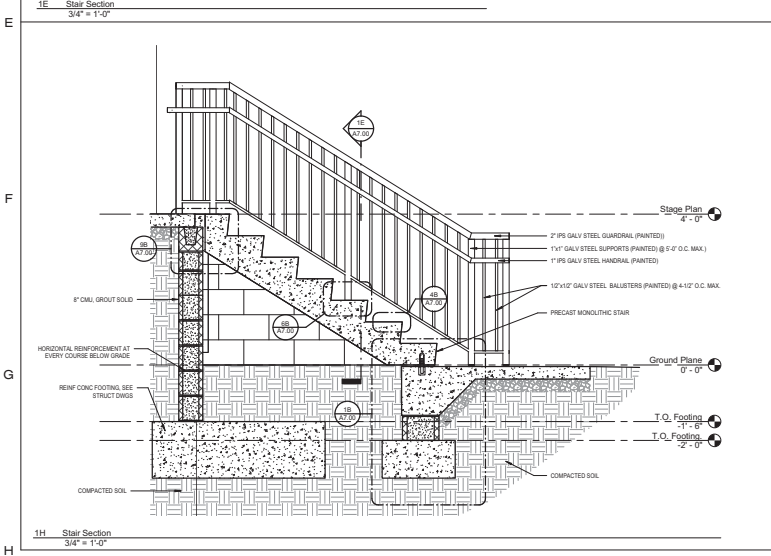
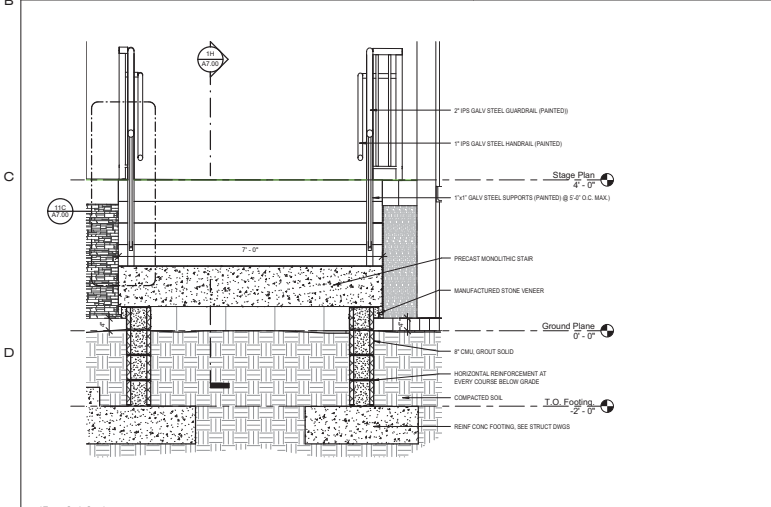
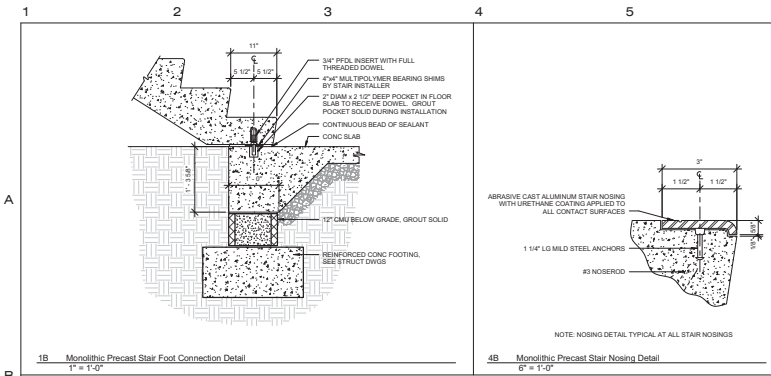
sheet title:  
**Performing Arts Stage Enlarged Plan & Stair Details**  
sheet number:

**A7.00**

drawn by: TGC  
checked by: TGC

©Copyright 2012  
Paradigm Architecture

10/17/2012 4:58:57 PM



**ALTERNATE:**  
PROVIDE DETAIL FOR CAST IN PLACE CONCRETE STAIR WITHOUT ALUMINUM NOSING INSERTS IN LIEU OF PRECAST STAIR. SEE ALUM FOR DETAIL.