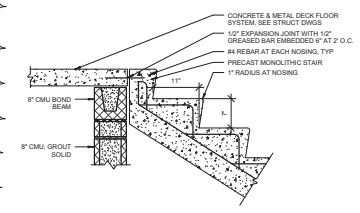
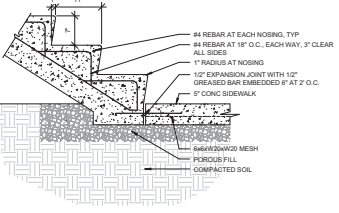


**ALTERNATE 1**  
 PROVIDE DETAIL FOR CAST IN PLACE CONCRETE STAIR  
 WITHOUT ALUMINUM NOSING INSERTS IN LIEU OF PRECAST STAIR.  
 SEE AS IS FOR DETAILS.

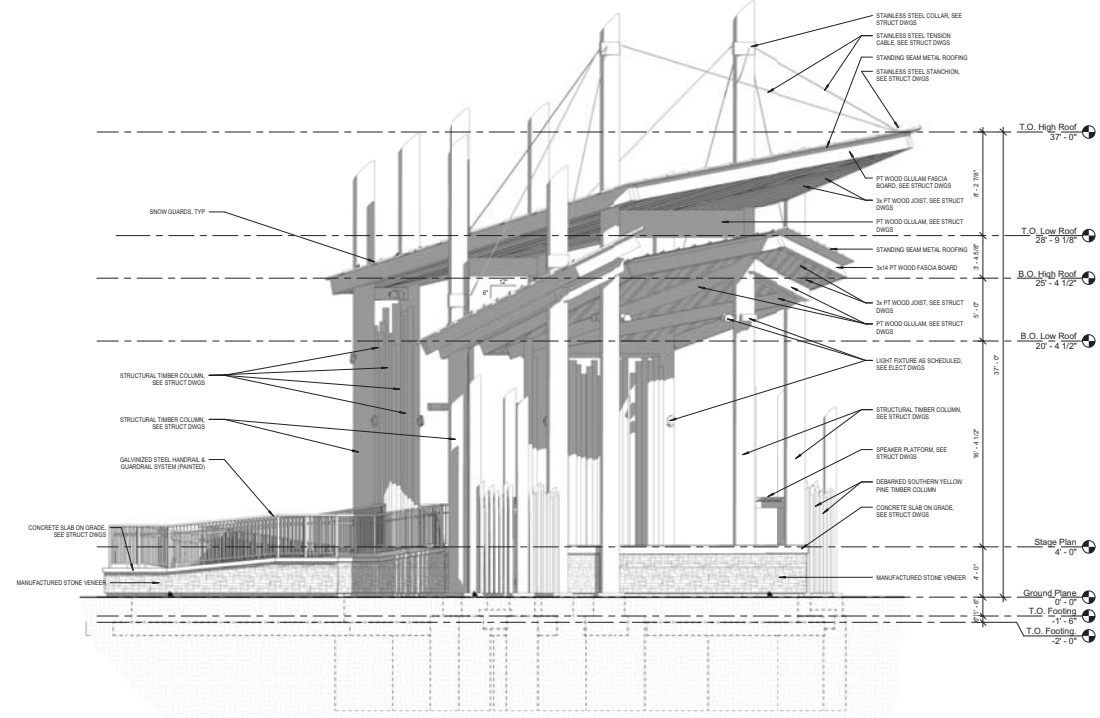


**7B** Cast in Place Stair Top Landing Detail  
 1" = 1'-0"

**ALTERNATE 1**  
 PROVIDE DETAIL FOR CAST IN PLACE CONCRETE STAIR  
 WITHOUT ALUMINUM NOSING INSERTS IN LIEU OF PRECAST STAIR.  
 SEE AS IS FOR DETAILS.



**10B** Cast in Place Stair Foot Connection Detail  
 1" = 1'-0"



**SH** Southwest Elevation  
 1/4" = 1'-0"



2223 Chest Road - Suite 300  
 Morgantown, WV 26508  
 tele 304-284-5015 304-284-5014 fax

2450 Valleydale Road - Suite 150  
 Birmingham, AL 35244  
 tele 205-403-2742 205-403-2743 fax



Construction Documents

revisions:  
 1 17Oct12 Addendum 1

Camp Washington Carver  
 Performing Arts Stage &  
 Support Building  
 Clifftop, WV

job number: 1083  
 date: 21MAY12

sheet title:  
 Performing Arts Stage  
 Southwest Elevation  
 sheet number:

**A5.06**  
 drawn by: TGC  
 checked by: TGC

©Copyright 2012  
 Paradigm Architecture

10/17/2012 4:58:29 PM