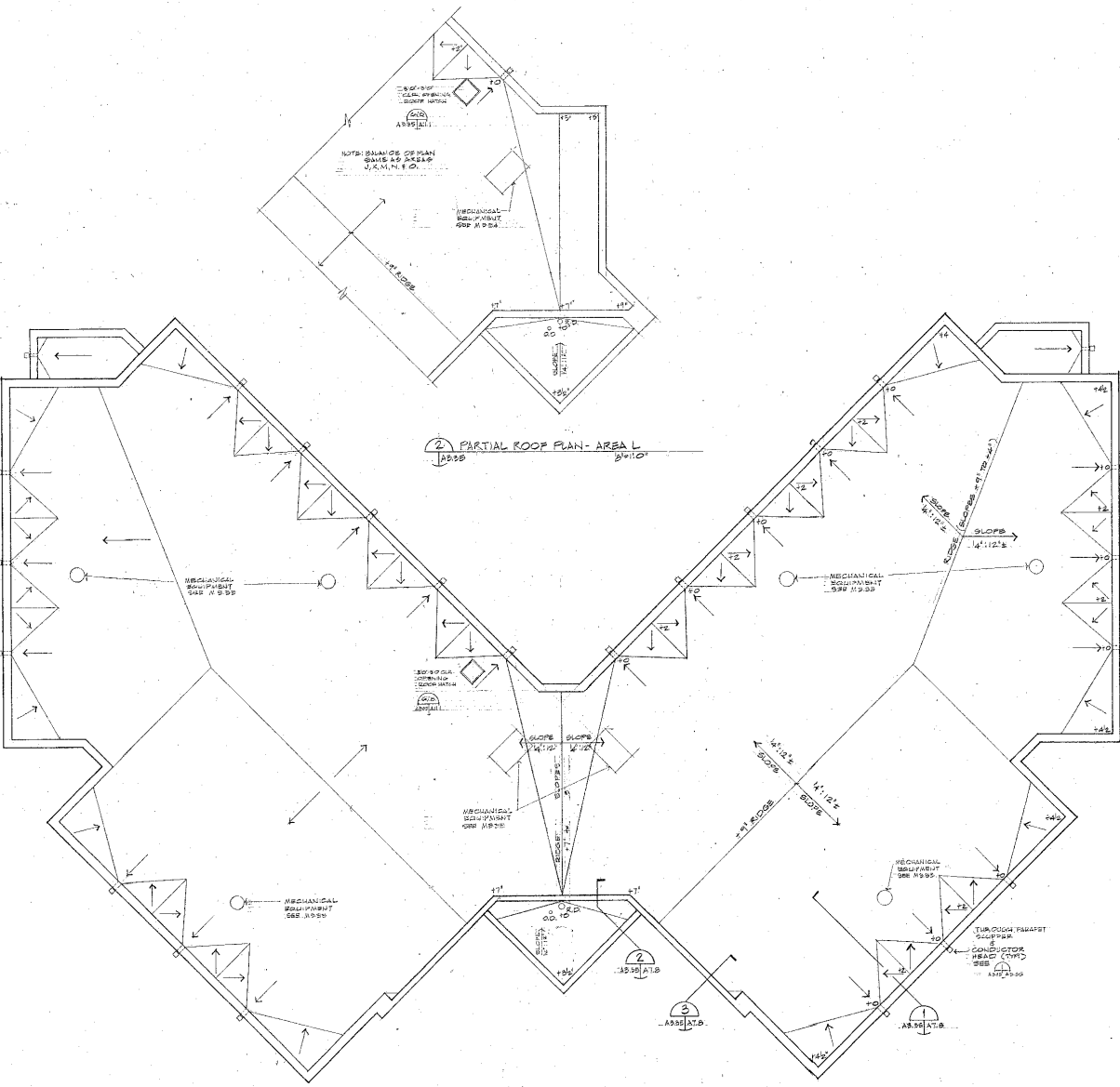
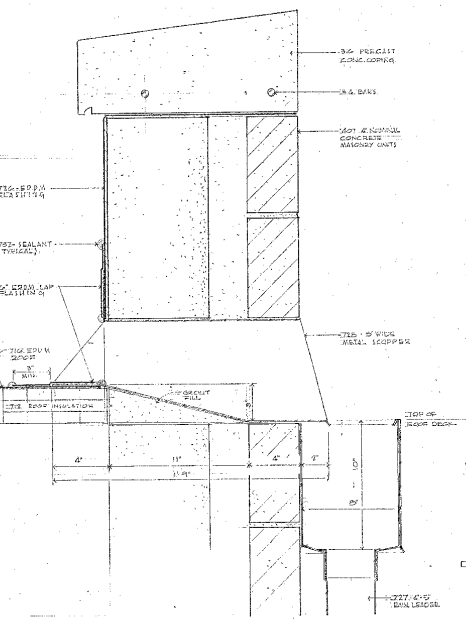


NOTE: ALL COVINGS CHANGED TO ALUMINUM FROM PRECAST CONCRETE BY SUPPLEMENTARY INSTRUCTIONS. SEE TYPICAL DETAIL 3/AS.12.



1 - ROOF PLANS, MEDIUM SECURITY HOUSING

SAI SILLING ASSOCIATES, INC.
 ARCHITECTS - PLANNERS
 800 CARTER STREET - SUITE 200 - BOX 937
 CHARLOTTE, N.C. 28227 - (704) 548-0265

THIS DRAWING AND ALL PARTS OF IT ARE THE PROPERTY OF SILLING ASSOCIATES, INC. (SAI). IT IS TO BE USED ONLY FOR THE PROJECT AND SITE SPECIFICALLY IDENTIFIED HEREIN. NO PART OF THIS DRAWING IS TO BE REPRODUCED OR TRANSMITTED IN ANY FORM OR BY ANY MEANS, ELECTRONIC OR MECHANICAL, WITHOUT THE WRITTEN PERMISSION OF SAI OR ITS AFFILIATES.

ROSSER FABRAP

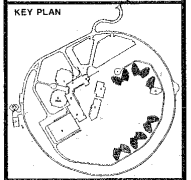
Rosser Fabrap International
 Architects, engineers, and planners
 Atlanta, Savannah, Tampa, San Bernardino County
 500 West Peachtree Street, N.W.
 Atlanta, Georgia 30308-0650
 (404) 525-3841



REVISIONS

RECORD DRAWING 9-5-95

**MOUNT OLIVE
 CORRECTIONAL COMPLEX**
 WEST VIRGINIA REGIONAL JAIL & CORRECTIONAL FACILITY AUTHORITY



DRAWING TITLE
**ROOF PLANS,
 MEDIUM SECURITY
 HOUSING**

AREAS JK,L,M,N,O

DATE 12/9/91

DRAWING NO. **A3.35**