

This drawing and all parts of it are the property of SILLING ASSOCIATES, INC. (SAI). There are to be no alterations to this drawing without the written consent of SAI or its architect.

**Rosser Fabrap International**  
 Architects, engineers, and planners  
 Atlanta, Savannah, Tampa, San Bernardino, County  
 San Diego, Peachtree Street, N.W.  
 Atlanta, Georgia 30308 0040  
 (404) 525-8200



REVISIONS

RECORD DRAWING 9-5-95

**MOUNT OLIVE  
 CORRECTIONAL COMPLEX**  
 WEST VIRGINIA REGIONAL JAIL & CORRECTIONAL FACILITY AUTHORITY

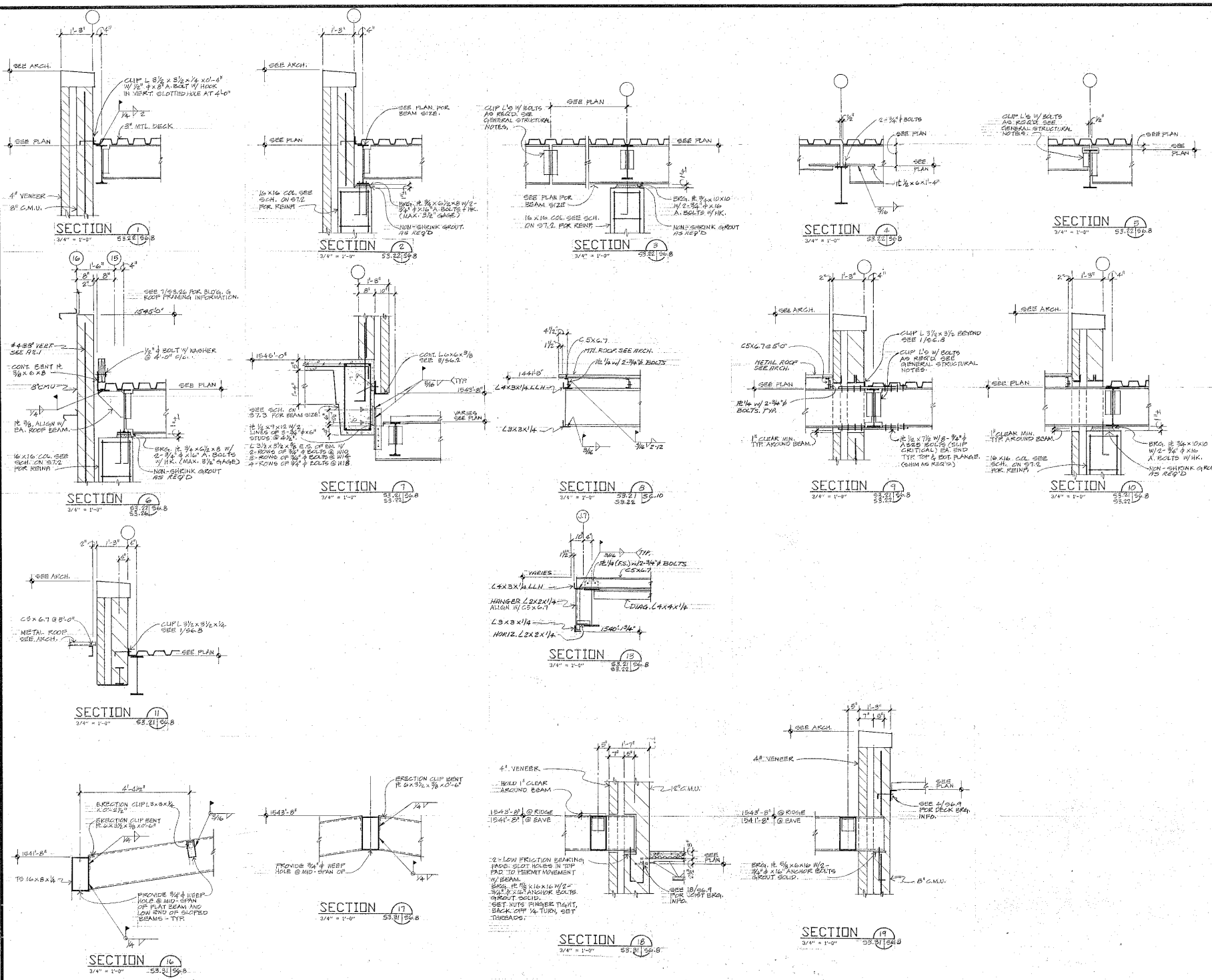
KEY PLAN

DRAWING TITLE  
 SECTIONS

DATE  
 DECEMBER 9, 1991

DRAWING NO.

**S6.8**



30-0 40  
 LBN