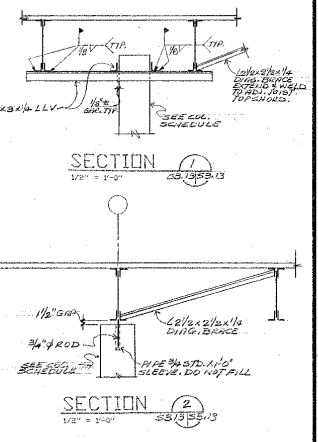


**AREA C, ROOF FRAMING PLAN**  
1/8" = 1'-0"



1. DESIGN LIVE LOAD: 30 PSP INCL SNOW (SNOW DRIFTING BASED ON 30 PPS FROM SNOW LOADS)
2. TOP OF STEEL & JOIST BEARING ELEVATION 1566'-8" EXCEPT AS SHOWN OTHERWISE
3. [C]-J INDICATES TOP OF STEEL ELEVATION RELATIVE TO SUPPORTING MEMBER
4. ROOF CONSTRUCTION: 1 1/2" X 24 GAGE WIDE-RIB METAL ROOF DECK, METAL DECK WELDING: 5/16" DIAMETER PIGTAIL WELDS 12" O/C AT ALL SUPPORTS, PROVIDE SIDELAP FASTENERS AT MIDSPAN OF ALL SPANS CENTER TO CENTER 4'-0"
5. [O] INDICATES NUMBER OF ROWS OF TOP AND BOTTOM HORIZONTAL BRACING ANGLES 1 1/2" X 1 1/2" X 1/8 EXCEPT AS SHOWN, PROVIDE ADDITIONAL "X" BRACING AS SHOWN
6. [L] INDICATES BRACING OPENING, PROVIDE FRAME USING ANGLES 3 1/2" X 3 1/2" X 1/8 ON POOR SIDES, CONTRACTOR SHALL COORDINATE SIZE AND LOCATION OPENINGS WITH ARCHITECTURAL AND MECHANICAL REQUIREMENTS
7. [D] INDICATES ROOF DRAIN, PROVIDE FRAME PER NOTE 1
8. REFERENCED: ORIGINAL STRUCTURAL NOTES ON DRAWING 59.1; BEAM SCHEDULE OF DRAWING ST. 3, ST. 4, AND ST. 5; COLUMN SCHEDULE OF DRAWING ST. 2.

**SAI SILLING ASSOCIATES, INC.**  
ARCHITECTS - PLANNERS  
405 CARTER STREET, SUITE 200 • RICHMOND  
CHARLESTON, W. V. 25323 • (304) 346-0055

THIS DRAWING AND ALL PARTS OF IT ARE THE PROPERTY OF SILLING ASSOCIATES, INC. (S.A.I.). IT IS TO BE RETURNED TO S.A.I. WITHIN 30 DAYS OF THE DATE OF THE LAST REVISION. REPRODUCTION OF THIS DRAWING WITHOUT THE WRITTEN CONSENT OF S.A.I. IS STRICTLY PROHIBITED.

**ROSSER FABRAP**

**Rosser Fabrap International**  
Architects, engineers, and planners  
Atlanta, Savannah, Tampa, San Bernardino County  
250 West Peachtree Street, Suite 1100  
Atlanta, Georgia 30308-0800  
404-525-3922

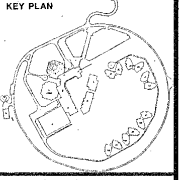


REVISONS

RECORD DRAWING 9-5-95

**MOUNT OLIVE CORRECTIONAL COMPLEX**

WEST VIRGINIA REGIONAL JAIL & CORRECTIONAL FACILITY AUTHORITY



DRAWING TITLE  
**ROOF FRAMING PLAN**

AREA C  
DATE: DECEMBER 9, 1991

DRAWING NO.  
**S3.13**