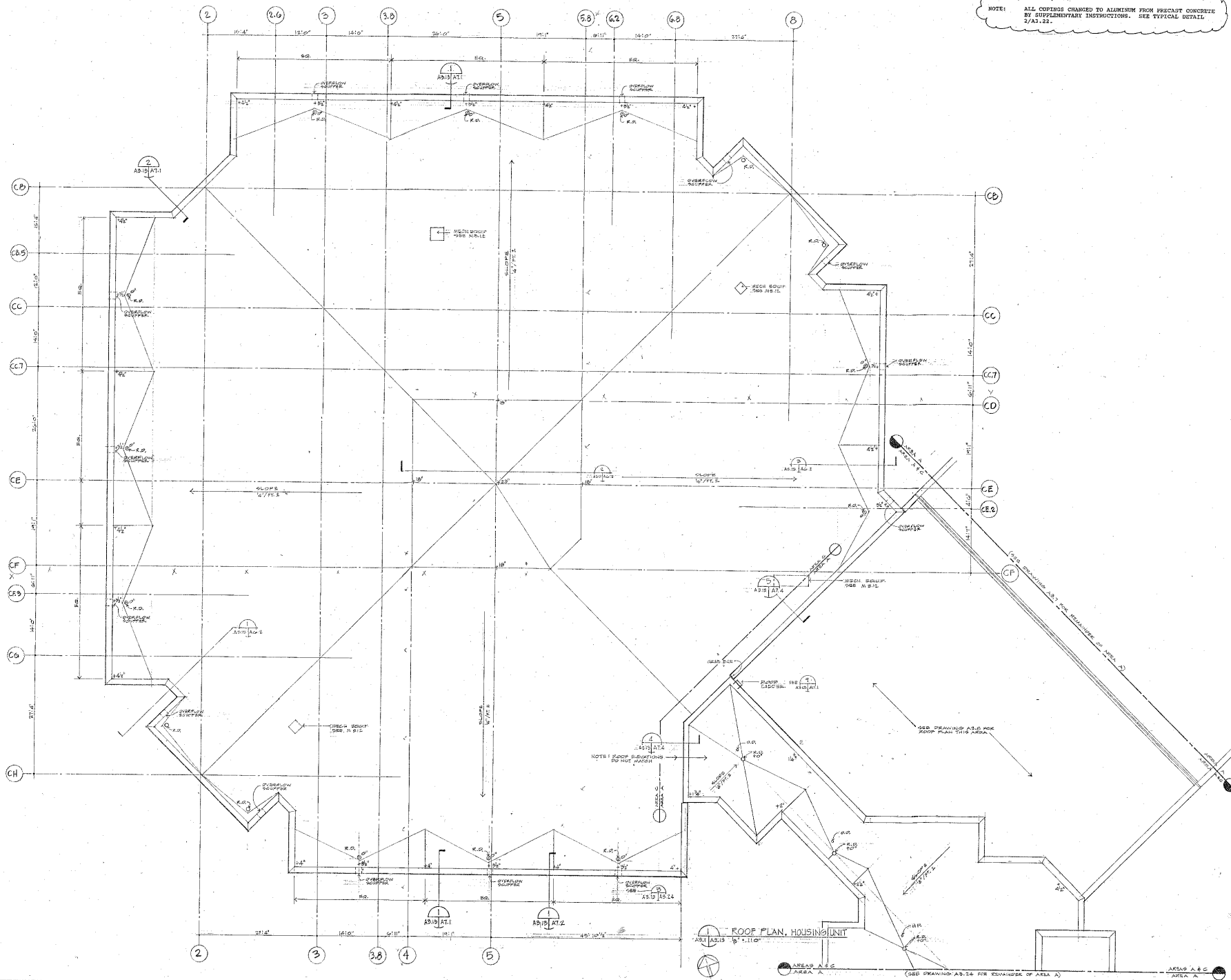


NOTE: ALL COPINGS CHANGED TO ALUMINUM FROM PRECAST CONCRETE BY SUPPLEMENTARY INSTRUCTIONS. SEE TYPICAL DETAIL 2/A3.12.



SAI SILLING ASSOCIATES, INC.
 ARCHITECTS - PLANNERS
 405 CAPITOL STREET - SUITE 300 - BOX 807
 CHARLESTON, W.V. 25302 - (304)346-0995

ROSSER FABRAP

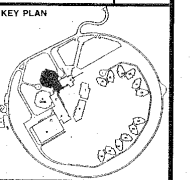
Rosser Fabrap International
 Architects, engineers, and planners.
 Atlanta, Savannah, Tampa, San Bernardino County



REVISIONS

RECORD DRAWING 9-5-95

MOUNT OLIVE CORRECTIONAL COMPLEX
 WEST VIRGINIA REGIONAL JAIL & CORRECTIONAL FACILITY AUTHORITY



DRAWING TITLE
ROOF PLAN, HOUSING UNIT

AREA A & C

DATE 12/9/91

DRAWING NO. **A3.13**

ROOF PLAN, HOUSING UNIT

(SEE DRAWING A3.14 FOR REMAINDER OF AREA A)

AREA A & C