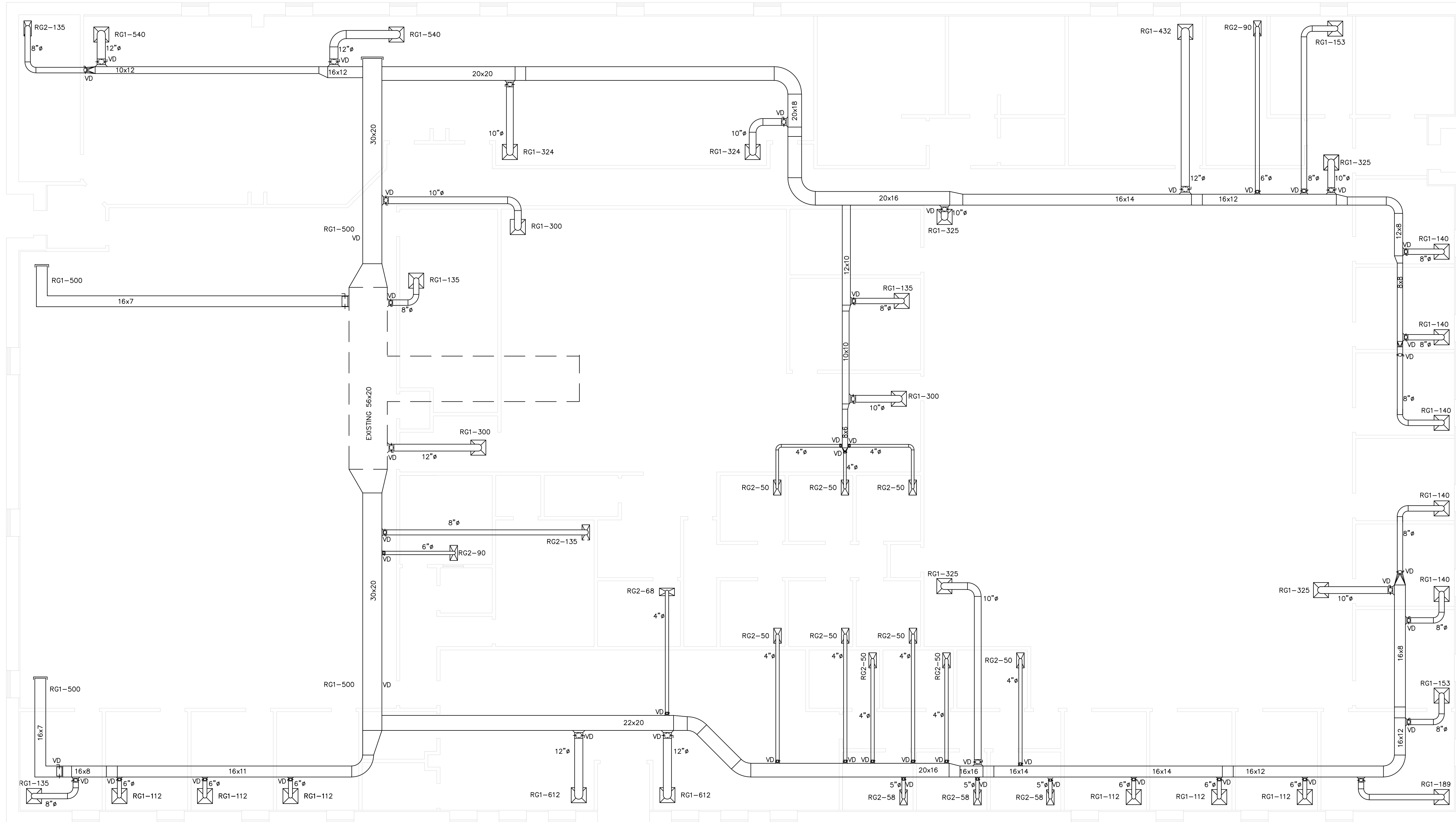




RETURN DUCT PROJECT  
 WV STATE BUILDING 97  
 WILLIAMSON, WV



M
1a
 BUILDING 97 RETURN DUCT FLOOR PLAN  
 1/8" = 1'-0"

**GENERAL NOTES**

1. THESE MECHANICAL CONSTRUCTION DOCUMENTS ARE BASED UPON DESIGN CRITERIA DERIVED FROM THE FOLLOWING HANDBOOKS, STANDARDS & CODES:  
 ASHRAE: HANDBOOKS  
 ASHRAE: STANDARD 55  
 ASHRAE: STANDARD 62  
 ASHRAE: LOAD CALCULATIONS MANUAL, SECOND EDITION  
 BOCA: NATIONAL MECHANICAL CODE  
 BOCA: NATIONAL FIRE PREVENTION CODE  
 SMACNA: HVAC SYSTEMS AND DUCT DESIGN, THIRD EDITION
2. CLEARANCES INDICATED ARE BASED UPON THE BEST AVAILABLE INFORMATION. THE CONTRACTOR SHALL VERIFY PIPING, DUCTWORK, ETC., ROUTING PRIOR TO SUBMITTING A BID INCLUDING SUCH COSTS AS REQUIRED TO COMPLETE WORK AS SHOWN OR INTENDED.
3. CONTRACTOR SHALL FIELD VERIFY EXACT SIZE AND LOCATION OF ALL EXISTING WORK PRIOR TO CONSTRUCTION. ALL EXISTING WORK SHOWN INDICATES LOCATION ROUTING AS DERIVED FROM EXISTING DRAWINGS. IN THE EVENT OF CONFLICT, CONTACT THE PROJECT ENGINEER FOR A DECISION.
4. THE CLEARANCE BETWEEN THE UNDERSIDE OF EXISTING FLOOR BEAMS AND SLAB AND THE TOP OF THE CEILING IS CRITICAL. BECAUSE OF THE SCALE OF THIS DRAWING AND TO MAINTAIN CLARITY, NOT ALL DUCT OR PIPE FITTINGS REQUIRED TO AVOID CONFLICTS ARE SHOWN. IN THE EVENT OF CONFLICT, CONTACT PROJECT ENGINEER FOR CLARIFICATION AND DIRECTION.

**PLAN NOTES**

- ① DUCTWORK SIZES SHOWN ON DRAWINGS ARE INSIDE DIMENSIONS (FREE AREA)
- ② THE USE OF FLEX DUCT IS LIMITED TO NO MORE THAN FIVE FEET PER APPLICATION.
- ③ USE EXISTING RETURN GRILLES; FIELD VERIFY DIMENSIONS.
- ④ PROVIDE AND INSTALL A SPIN-IN WITH VOLUME DAMPER WHERE INDICATED.
- ⑤ PROVIDE AND INSTALL A FABRICATED SQUARE TO ROUND BOOT ON EXISTING GRILLES WHERE INDICATED.
- ⑥ RETURN AIR SET @ 90% DESIGN SUPPLY AIR; BALANCE SYSTEM UPON COMPLETION OF INSTALLATION.

REVISIONS	
DATE	NO.

SEAL

REVISED	
DATE 02/22/2012	SCALE AS NOTED
DRAWN BY GMH	CHK. BY -
DRAWING NUMBER	
M1	