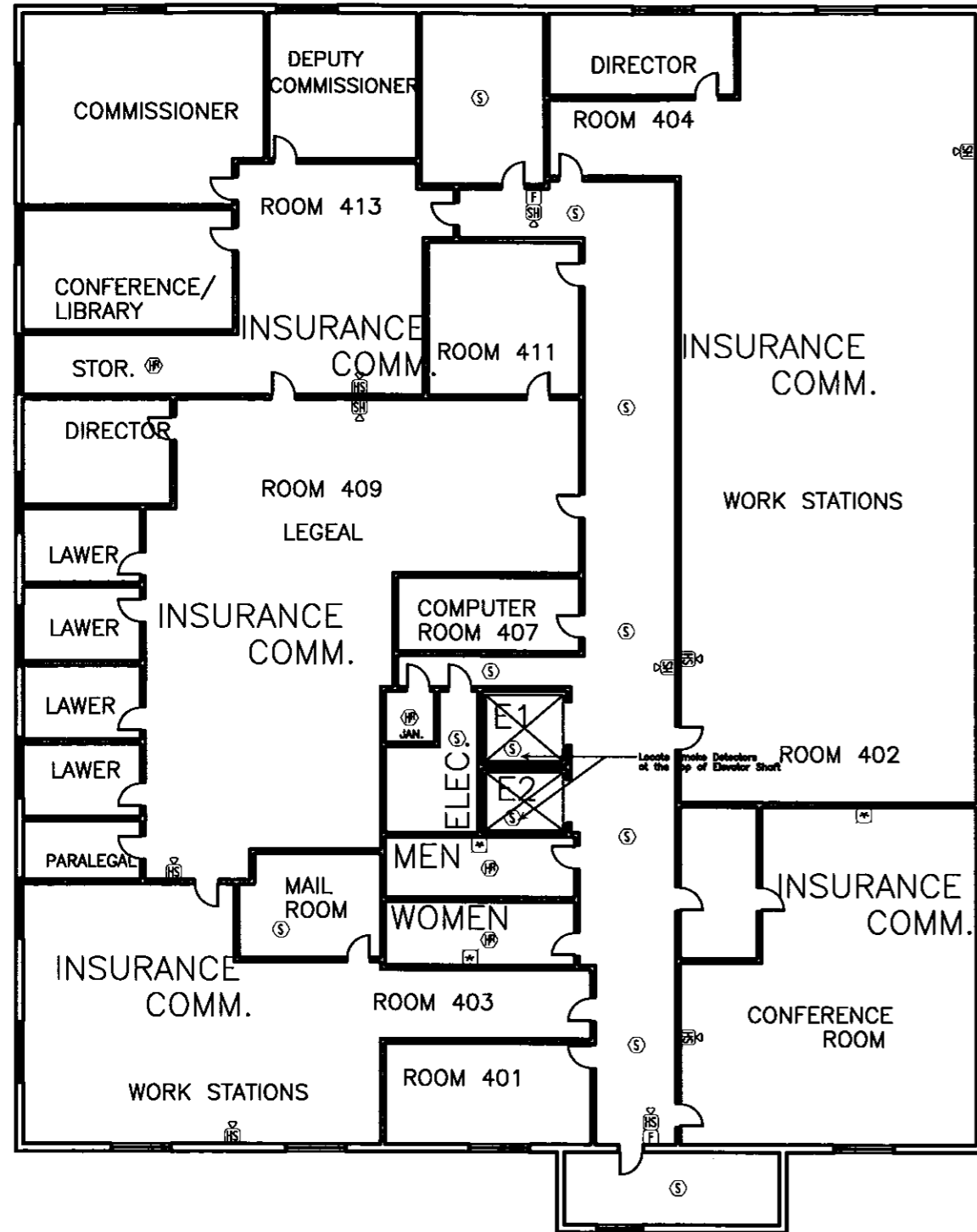




**Building 86 Summers**  
 West Virginia State Office Bldg.  
 1124 SMITH STREET  
 CHARLESTON, WEST VIRGINIA 25301



FOURTH FLOOR PLAN

**FIRE ALARM SYSTEM LEGEND**

SYMBOL	DESCRIPTION	ROUGH-IN
[FACP]	FIRE ALARM CONTROL PANEL	PROVIDED
[ANN]	ANNUNCIATOR	4" SQUARE
[BPS]	BOOSTER POWER SUPPLY (X=BPS#)	PROVIDED
[CR]	ADDRESSABLE MODULE CONTROL RELAY	1 GANG
[CI]	ADDRESSABLE MODULE INPUT MODULE	1 GANG
[C2]	ADDRESSABLE MODULE DUAL INPUT MODULE	1 GANG
[CI]	ADDRESSABLE MODULE INPUT/OUTPUT MODULE	1 GANG
[C2]	ADDRESSABLE MODULE DUAL INPUT/OUTPUT MODULE	1 GANG
[FS]	FLOW SWITCH	N/A
[TS]	TAMPER SWITCH	N/A
[PS]	PRESSURE SWITCH	N/A
[S]	SMOKE DETECTOR	4" OCTAGON
[S]	ROOM SMOKE DETECTOR (XXXCD INDICATES SMOKE WITH STROBE)	4" OCTAGON
[S]	DUCT SMOKE DETECTOR	N/A
[T]	TEST SWITCH	2 GANG
[H]	HEAT DETECTOR (RATE OF RISE)	4" OCTAGON
[H]	HEAT DETECTOR (FIXED TEMP.)	4" OCTAGON
[M]	MANUAL STATION	4" SQUARE W/1 GANG RING
[R]	RANGE HOOD	N/A
[DH]	DOOR HOLDER	1 GANG
[H]	HORN/STROBE	1 GANG
[S]	STROBE	1 GANG

NOTE: ALL FIRE ALARM CABLE MUST COMPLY WITH NEC 760.  
 NOTE: USE PLENUM CABLE WHERE REQUIRED.  
 NOTE: CHECK ELECTRICAL RATINGS OF CONTROL CIRCUITS. EXTERNAL RELAYS MAY BE REQUIRED.  
 NOTE: SMOKE DETECTORS MUST BE LOCATED AT A MINIMUM OF 36 INCHES FROM AIR DIFFUSERS.  
 NOTE: ADDRESSABLE DATA LOOP MAY NOT HAVE MORE THAN 55 T-TAPS.  
 NOTE: SMOKE DETECTORS MUST BE AT LEAST 36 INCHES FROM ELECTRICAL BALLAST.  
 NOTE: PROVIDE LOCAL 120VAC POWER WHERE REQUIRED BY FIRE ALARM EQUIPMENT. 120VAC SHALL ENTER BACK BOX THROUGH TOP LEFT KNOCK OUT

REVISIONS	
DATE	NO.

SEAL

REVISED

DATE 5/19/11	SCALE NOTED
DRAWN BY BMG	CHK. BY

DRAWING NUMBER  
**5**