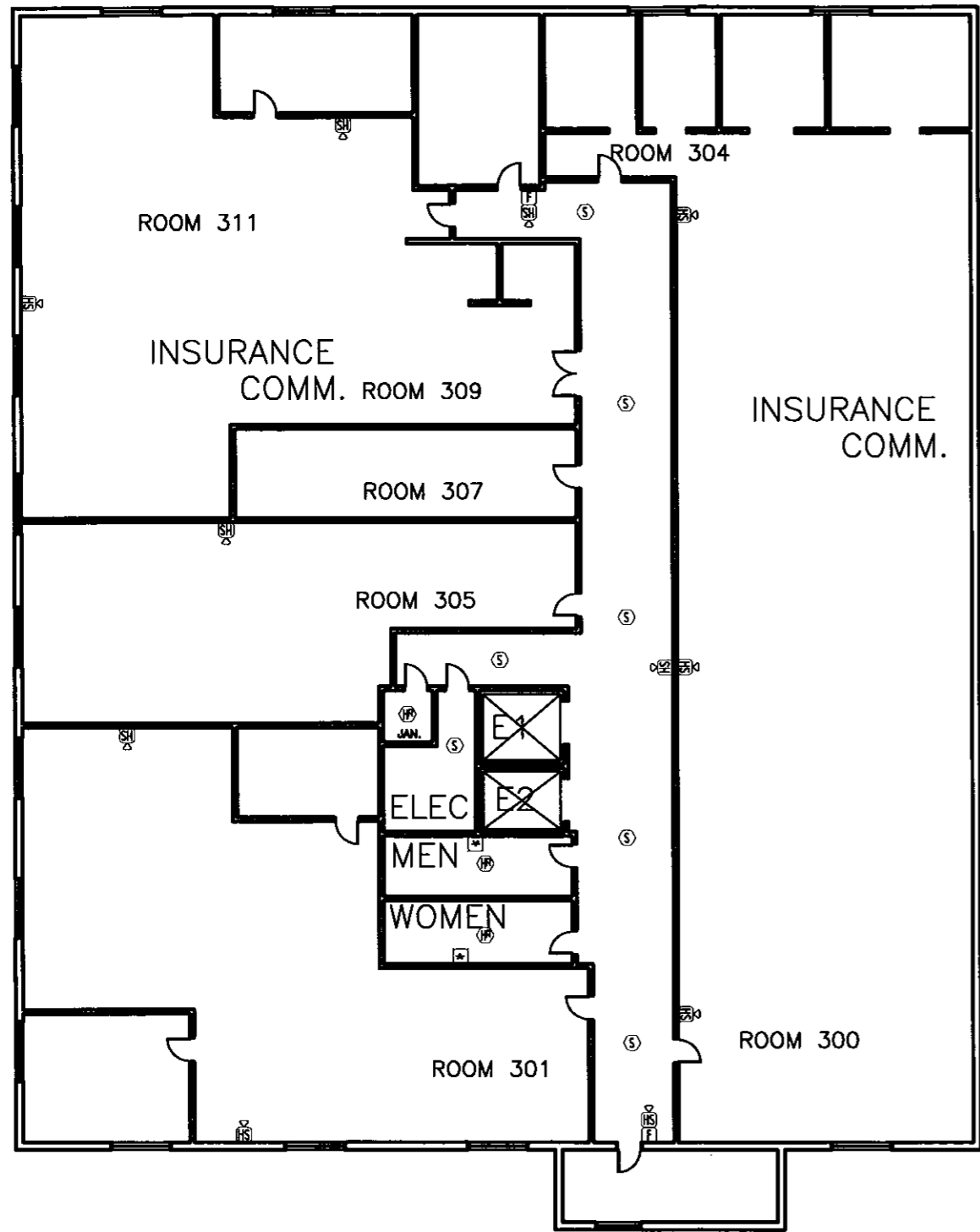




Building 86 Summers
 West Virginia State Office Bldg.
 1124 SMITH STREET
 CHARLESTON, WEST VIRGINIA 25301



THIRD FLOOR PLAN

FIRE ALARM SYSTEM LEGEND

SYMBOL	DESCRIPTION	ROUGH-IN
(FACP)	FIRE ALARM CONTROL PANEL	PROVIDED
(ANN)	ANNUNCIATOR	4" SQUARE
(BPS)	BOOSTER POWER SUPPLY (X=BPS#)	PROVIDED
(CR)	ADDRESSABLE MODULE CONTROL RELAY	1 GANG
(CI)	ADDRESSABLE MODULE INPUT MODULE	1 GANG
(CD)	ADDRESSABLE MODULE DUAL INPUT MODULE	1 GANG
(CI/O)	ADDRESSABLE MODULE INPUT/OUTPUT MODULE	1 GANG
(CD/O)	ADDRESSABLE MODULE DUAL INPUT/OUTPUT MODULE	1 GANG
(FS)	FLOW SWITCH	N/A
(TS)	TAMPER SWITCH	N/A
(PS)	PRESSURE SWITCH	N/A
(S)	SMOKE DETECTOR	4" OCTAGON
(S _{ST})	ROOM SMOKE DETECTOR (XXXCD INDICATES SMOKE WITH STROBE)	4" OCTAGON
(S _D)	DUCT SMOKE DETECTOR	N/A
(T)	TEST SWITCH	2 GANG
(HR)	HEAT DETECTOR (RATE OF RISE)	4" OCTAGON
(HF)	HEAT DETECTOR (FIXED TEMP.)	4" OCTAGON
(F)	MANUAL STATION	4" SQUARE W/1 GANG RING
(RH)	RANGE HOOD	N/A
(DH)	DOOR HOLDER	1 GANG
(H/S)	HORN/STROBE	1 GANG
(S)	STROBE	1 GANG

NOTE: ALL FIRE ALARM CABLE MUST COMPLY WITH NEC 760.
 NOTE: USE PLENUM CABLE WHERE REQUIRED.
 NOTE: CHECK ELECTRICAL RATINGS OF CONTROL CIRCUITS. EXTERNAL RELAYS MAY BE REQUIRED.
 NOTE: SMOKE DETECTORS MUST BE LOCATED AT A MINIMUM OF 36 INCHES FROM AIR DIFFUSERS.
 NOTE: ADDRESSABLE DATA LOOP MAY NOT HAVE MORE THAN 55 T-TAPS.
 NOTE: SMOKE DETECTORS MUST BE AT LEAST 36 INCHES FROM ELECTRICAL BALLAST.
 NOTE: PROVIDE LOCAL 120VAC POWER WHERE REQUIRED BY FIRE ALARM EQUIPMENT. 120VAC SHALL ENTER BACK BOX THROUGH TOP LEFT KNOCK OUT

REVISIONS	
DATE	NO.

SEAL

REVISED	
DATE	SCALE
5/19/11	NOTED
DRAWN BY BMG	CHK. BY
DRAWING NUMBER	
4	