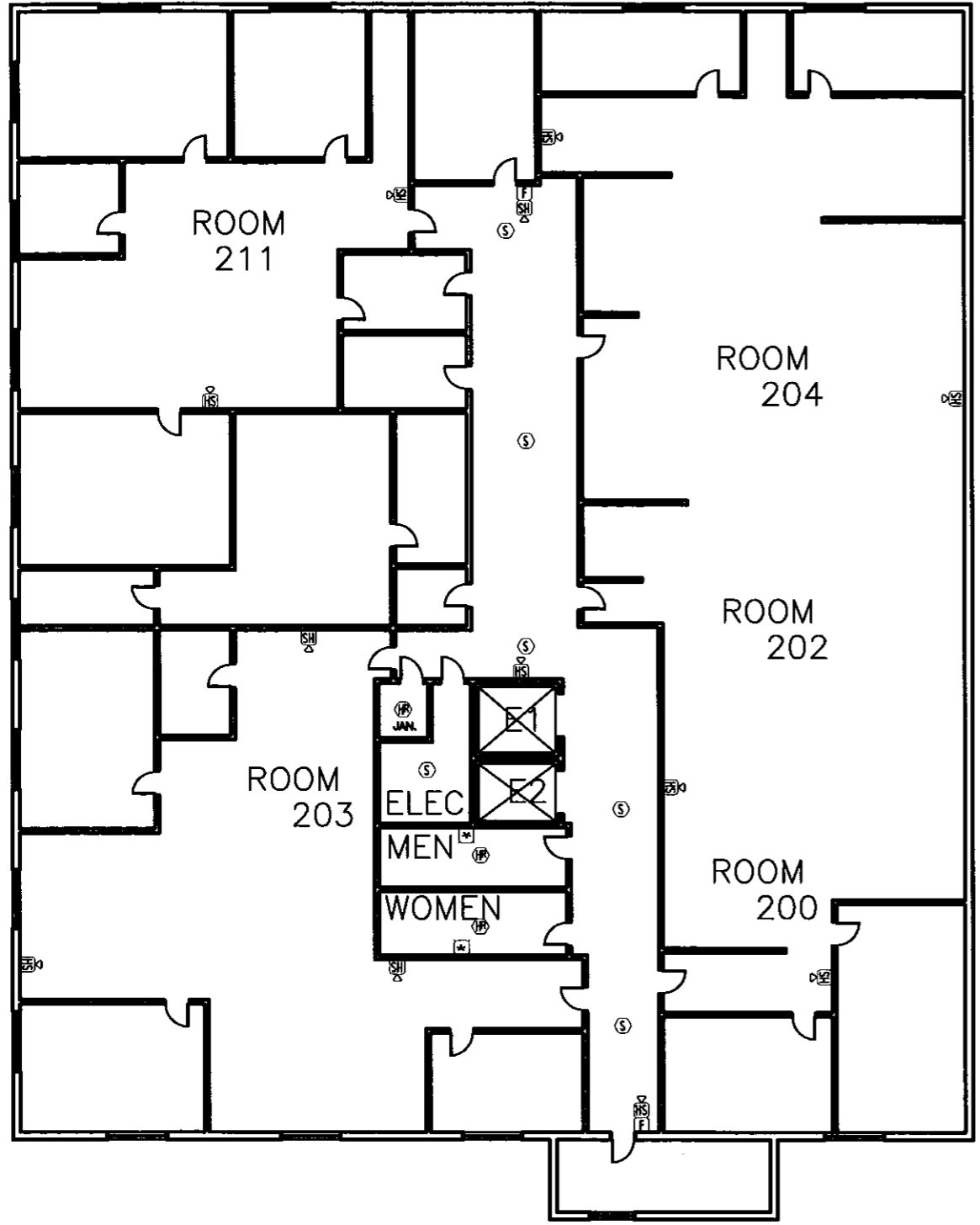




**Building 86 Summers**  
 West Virginia State Office Bldg.  
 1124 SMITH STREET  
 CHARLESTON, WEST VIRGINIA 25301



SECOND FLOOR PLAN

**FIRE ALARM SYSTEM LEGEND**

| SYMBOL  | DESCRIPTION   | ROUGH-IN                |
|---------|---|-------------------------|
| [FACP]  | FIRE ALARM CONTROL PANEL                                | PROVIDED                |
| [ANN]   | ANNUNCIATOR   | 4" SQUARE               |
| [BPS]   | BOOSTER POWER SUPPLY (X=BPS#)                           | PROVIDED                |
| [CR]    | ADDRESSABLE MODULE CONTROL RELAY                        | 1 GANG                  |
| [CI]    | ADDRESSABLE MODULE INPUT MODULE                         | 1 GANG                  |
| [CD]    | ADDRESSABLE MODULE DUAL INPUT MODULE                    | 1 GANG                  |
| [CI/O]  | ADDRESSABLE MODULE INPUT/OUTPUT MODULE                  | 1 GANG                  |
| [CD/O]  | ADDRESSABLE MODULE DUAL INPUT/OUTPUT MODULE             | 1 GANG                  |
| [FS]    | FLOW SWITCH   | N/A                     |
| [TS]    | TAMPER SWITCH   | N/A                     |
| [PS]    | PRESSURE SWITCH   | N/A                     |
| [S]     | SMOKE DETECTOR  | 4" OCTAGON              |
| [SXXXD] | ROOM SMOKE DETECTOR (XXXCD INDICATES SMOKE WITH STROBE) | 4" OCTAGON              |
| [SD]    | DUCT SMOKE DETECTOR                                     | N/A                     |
| [T]     | TEST SWITCH   | 2 GANG                  |
| [HR]    | HEAT DETECTOR (RATE OF RISE)                            | 4" OCTAGON              |
| [HF]    | HEAT DETECTOR (FIXED TEMP.)                             | 4" OCTAGON              |
| [F]     | MANUAL STATION  | 4" SQUARE W/1 GANG RING |
| [RH]    | RANGE HOOD  | N/A                     |
| [DH]    | DOOR HOLDER   | 1 GANG                  |
| [H/S]   | HORN/STROBE   | 1 GANG                  |
| [S]     | STROBE  | 1 GANG                  |

NOTE: ALL FIRE ALARM CABLE MUST COMPLY WITH NEC 760.  
 NOTE: USE PLENUM CABLE WHERE REQUIRED.  
 NOTE: CHECK ELECTRICAL RATINGS OF CONTROL CIRCUITS. EXTERNAL RELAYS MAY BE REQUIRED.  
 NOTE: SMOKE DETECTORS MUST BE LOCATED AT A MINIMUM OF 36 INCHES FROM AIR DIFFUSERS.  
 NOTE: ADDRESSABLE DATA LOOP MAY NOT HAVE MORE THAN 55 T-TAPS.  
 NOTE: SMOKE DETECTORS MUST BE AT LEAST 36 INCHES FROM ELECTRICAL BALLAST.  
 NOTE: PROVIDE LOCAL 120VAC POWER WHERE REQUIRED BY FIRE ALARM EQUIPMENT. 120VAC SHALL ENTER BACK BOX THROUGH TOP LEFT KNOCK OUT

| REVISIONS |     |
|-----------|-----|
| DATE      | NO. |
|           |     |
|           |     |
|           |     |
|           |     |
|           |     |
|           |     |
|           |     |
|           |     |
|           |     |
|           |     |

SEAL

REVISED

|                 |                |
|-----------------|----------------|
| DATE<br>5/19/11 | SCALE<br>NOTED |
| DRAWN BY<br>BMG | CHK. BY        |

DRAWING NUMBER  
**3**