



**ALBERT T. SUMMERS CENTER  
SIGNAGE PROJECT**  
BUILDING 86 1124 SMITH STREET  
CHARLESTON, WEST VIRGINIA 25301

REVISIONS	
DATE	NO.

SEAL

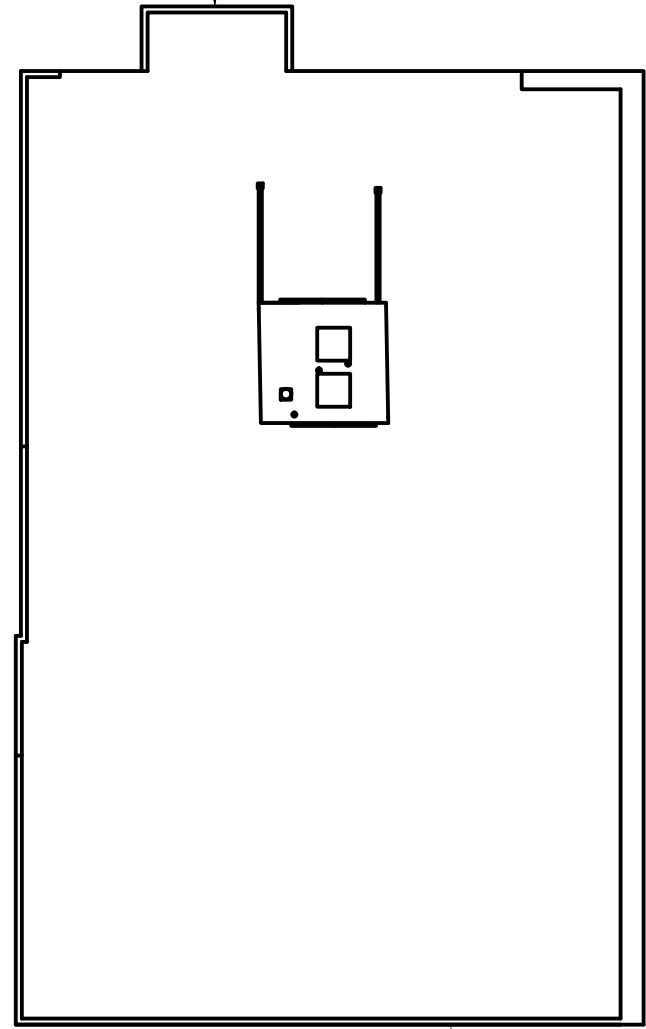
REVISED

DATE	SCALE
8/11/11	NOTED
DRAWN BY BMG	CHK. BY

DRAWING NUMBER  
**1**

BACK OF BUILDING (PARKING LOT)

LETTERING LOCATION  
(SEE DRAWING 4)



INTERSTATE ON - RAMP

SIGN LOCATION  
SEE DRAWING 3 (STREET LEVEL)

(2) SIGN LOCATION  
SEE DRAWING 2 (Upper Building)  
and 3 (Street Level)

FRONT OF BUILDING (SMITH STREET)

- NOTES:**
- LETTERING SHALL BE PLACED ON THE NORTH AND SOUTH SIDES OF THE BUILDING IN THE DESIGNATED AREA INDICATED ON THE DRAWINGS. (SEE SPECS FOR LETTERING DETAILS)
  - CONTRACTOR MUST FIELD VERIFY ALL DIMENSIONS. ANY DISCREPANCIES MUST BE BROUGHT TO THE PROJECT MANAGER / ARCHITECT ATTENTION PRIOR TO CONSTRUCTION.
  - DRAWING NOT TO SCALE