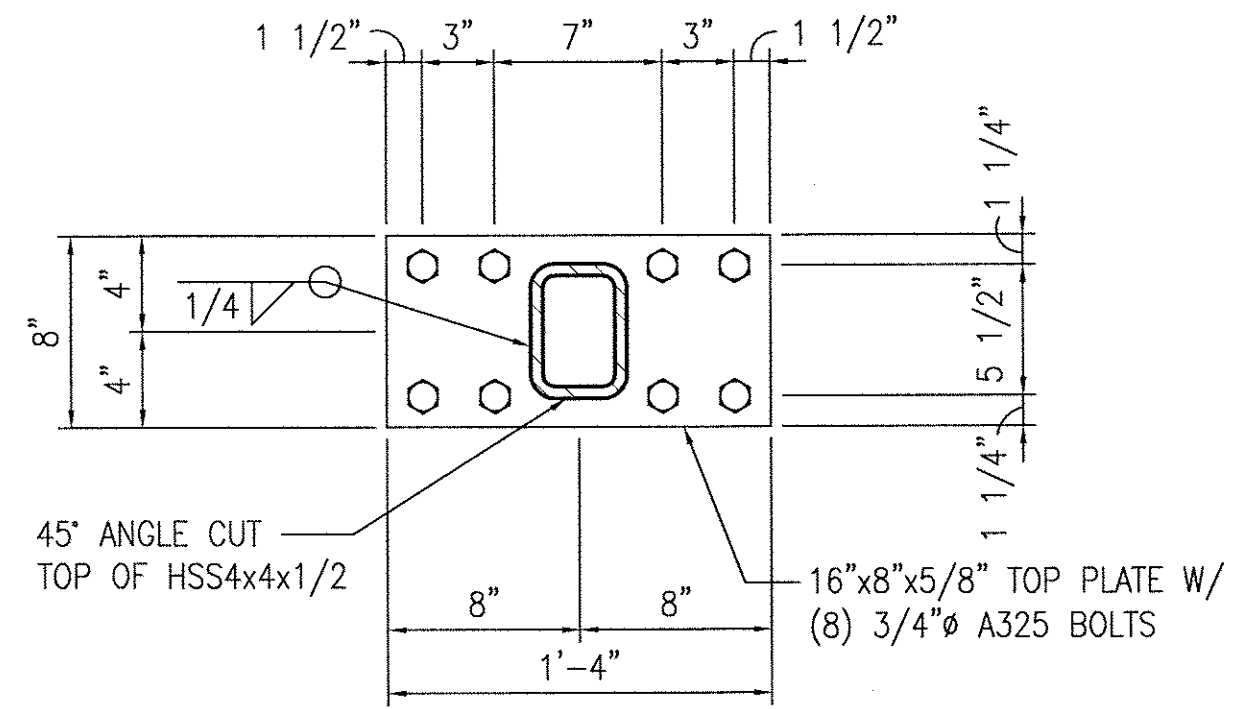


NOTE:
TOP PLATE AND TUBE NOT SHOWN FOR CLARITY.

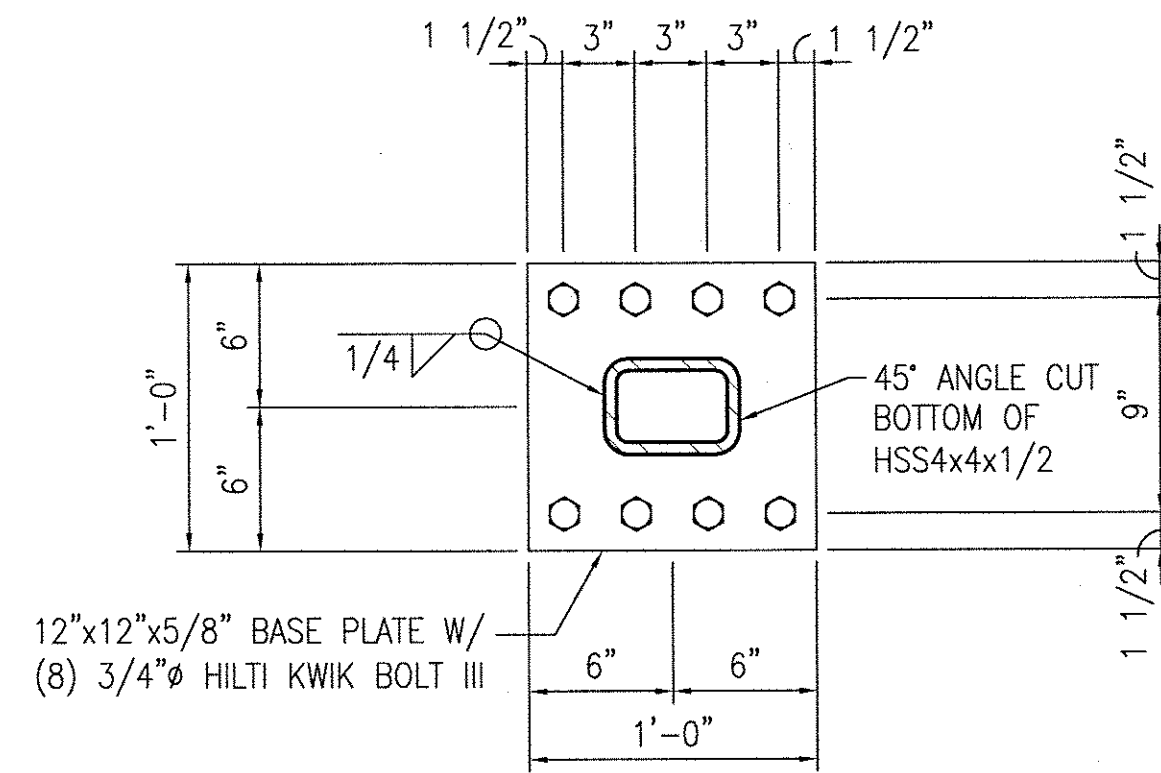
CONTINUOUS PLATE DETAIL

SCALE: 1 1/2" = 1'-0"



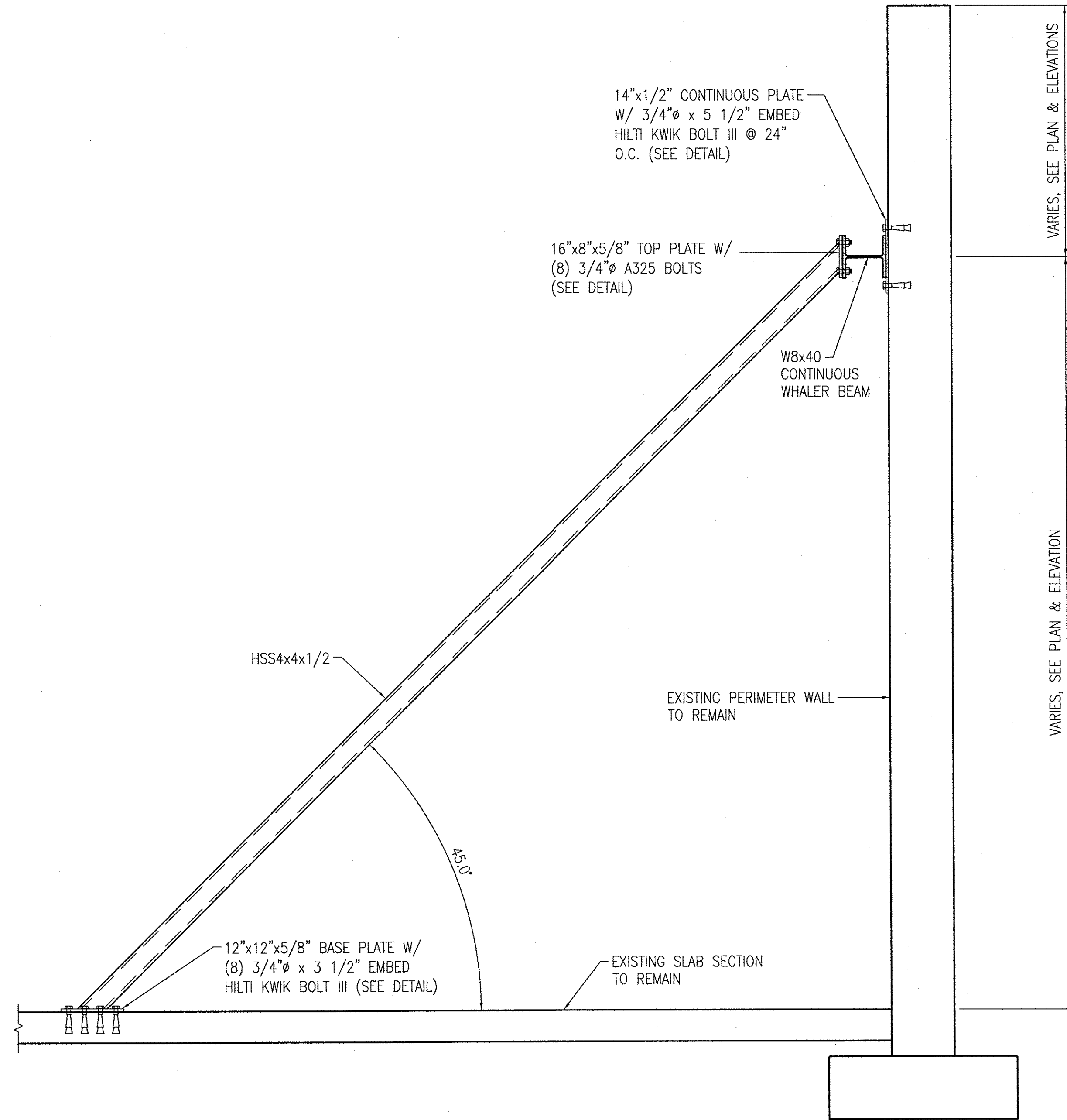
TOP PLATE DETAIL

SCALE: 1 1/2" = 1'-0"



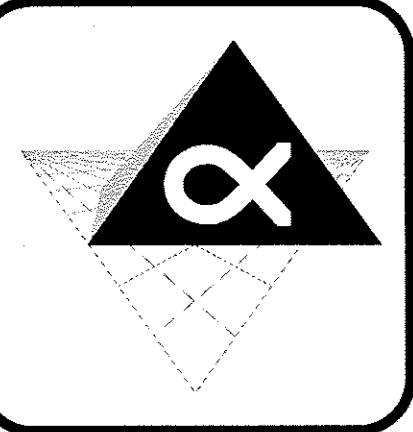
BASE PLATE DETAIL

SCALE: 1 1/2" = 1'-0"

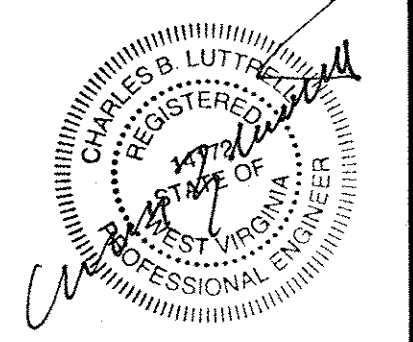


RETAINING WALL SUPPORT DETAIL

SCALE: 3/4" = 1'-0"



ALPHA
ASSOCIATES, INCORPORATED
ARCHITECTS ENGINEERS SURVEYORS
209 PRAIRIE AVENUE
MORGANTOWN, WV 26501
PHONE: 304-296-8216
FAX: 304-296-8216
TOLL FREE: 800-640-8216
EMAIL: alpha@alphaec.com
www.alphaec.com



COPYRIGHT © 2010
ALPHA ASSOCIATES, INC.
ALL RIGHTS RESERVED

REVISIONS	
ITEM	DATE

DETAILS
SCALE: AS NOTED

THE
CLARKSBURG STATE OFFICE BUILDING
WV GENERAL SERVICES DIVISION
PHASE ONE
CLARKSBURG, WEST VIRGINIA

DR'N.: DLF
P.M.: CBL P.I.C.: CBL
PROJ. NO.: 0810123.00
DATE: JULY 23, 2010
SHEET NO.:

S501