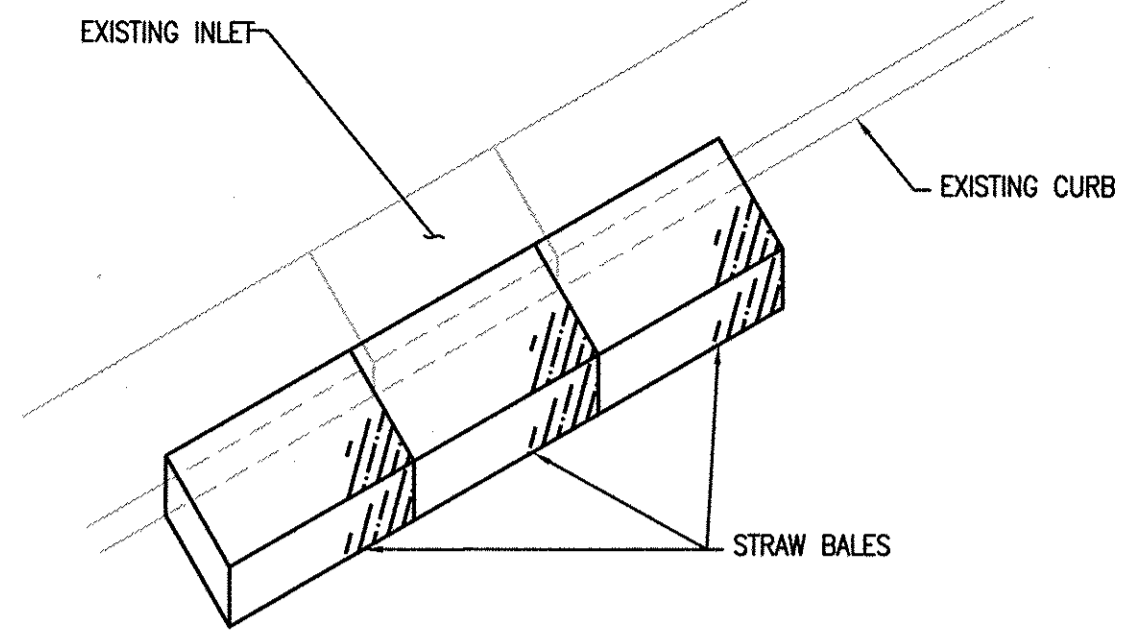


SILT FENCE DETAIL
NO SCALE

NOTE: WHERE JOINTS OCCUR IN THE FILTER FABRIC, SPLICES WILL OCCUR ONLY AT SUPPORT POSTS WITH A MINIMUM 6" OVERLAP, & SECURELY SEALED.

SEDIMENT DEPOSITS SHOULD BE REMOVED AFTER EACH STORM. DEPOSITS MUST BE REMOVED WHEN THEY REACH 1/2 THE HEIGHT OF THE BARRIER.

SILT FENCE SHALL BE PLACED AT LEVEL EXISTING GRADE. BOTH ENDS SHALL EXTEND AT LEAST 8 FEET UP THE SLOPE AT 45 DEGREES TO THE MAIN BARRIER ALIGNMENT.



STRAW BALE BARRIER DETAIL
NO SCALE

EROSION AND SEDIMENT CONTROL GENERAL NOTES

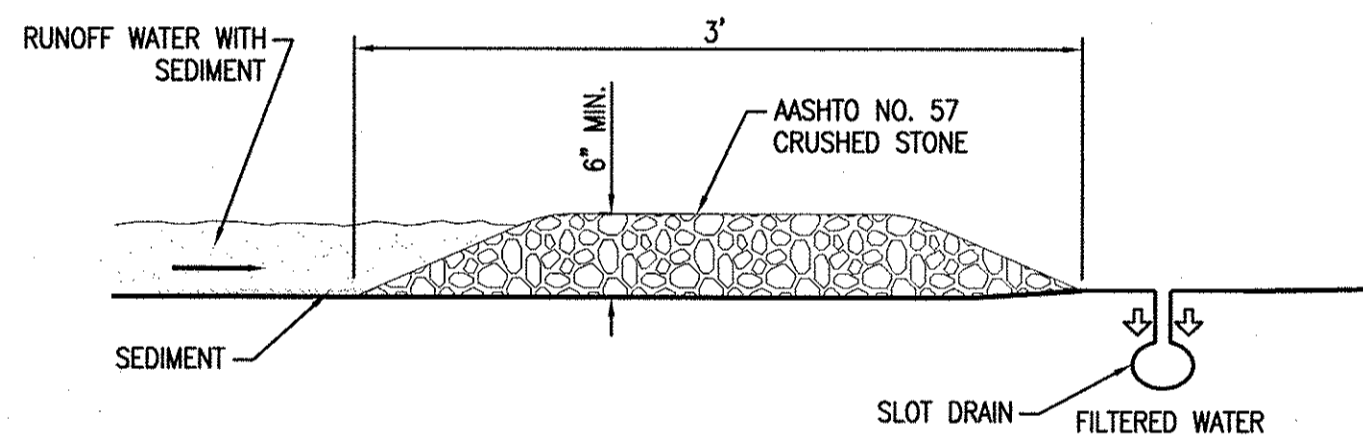
DETAILS NOT SHOWN IN THE PLANS SHALL BE IN ACCORDANCE WITH THE WEST VIRGINIA BEST MANAGEMENT PRACTICES MANUAL, AVAILABLE ON THE WVDEP WEBSITE <http://www2.wvdep.org/dwmm/stormwater/BMP/index.html>. IN THE EVENT THAT TEMPORARY EROSION AND POLLUTION CONTROL MEASURES ARE ORDERED BY THE ENGINEER DUE TO THE CONTRACTORS NEGLIGENCE, CARELESSNESS OR FAILURE TO INSTALL PERMANENT CONTROLS AS PART OF THE WORK SCHEDULED, SUCH WORK SHALL BE PERFORMED BY THE CONTRACTOR AT HIS OWN EXPENSE.

THE FIRST ORDER OF WORK FOR THE CONTRACTOR IS THE INSTALLATION OF SEDIMENT CONTROL DEVICE. TO ESTABLISH EROSION CONTROL AT THE EARLIEST POSSIBLE DATE. INITIAL CLEARING AND GRUBBING IS TO ONLY BE WHAT IS NECESSARY IN ORDER TO ACCOMPLISH THESE OPERATIONS.

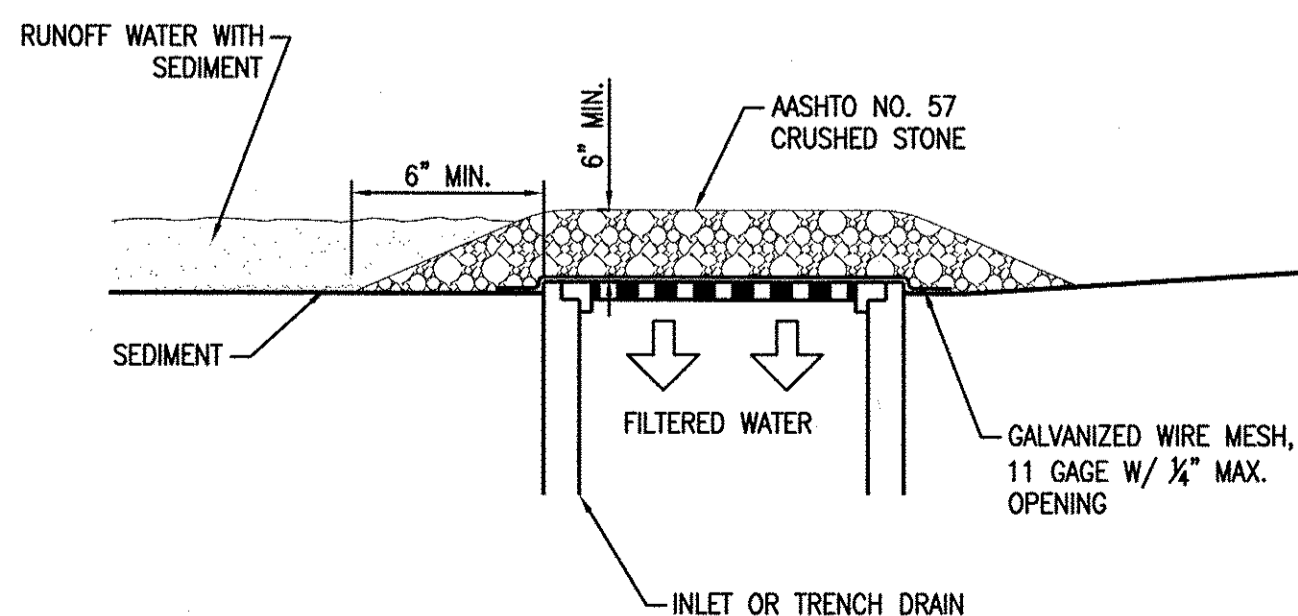
IN ADDITION, THE CONTRACTOR IS TO NAME AN INDIVIDUAL TO REVIEW THE EROSION CONTROL FEATURES AT A MINIMUM OF ONCE A WEEK OR AFTER EACH PRECIPITATION EVENT AND ONCE A MONTH DURING WINTER SHUTDOWN TO ASSESS THE SUCCESS OF THE EROSION CONTROL STRUCTURES, AND TO INSURE THAT REPLACEMENT, CLEANING, AND/OR INSTALLATION OF ADDITIONAL FEATURES AS NECESSARY ARE CARRIED OUT.

PERIODIC INSPECTION MAY BE CONDUCTED BY REPRESENTATIVES OF THE WEST VIRGINIA DIVISION OF ENVIRONMENTAL PROTECTION. REPRESENTATIVES OF THE OTHER RESOURCE AGENCIES MAY CONDUCT PERIODIC INSPECTION THROUGHOUT THE LIFE OF THE CONTRACT.

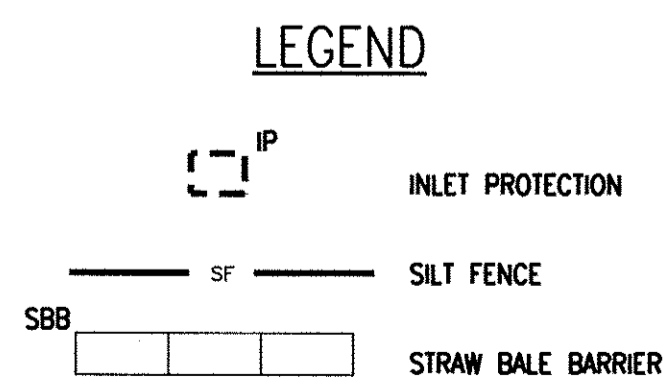
UPON COMPLETION OF DEMOLITION ACTIVITIES, PLACE ALL COLLECTED SEDIMENT, CRUSHED STONE, AND STRAW WITHIN THE FOOTPRINT OF DEMOLISHED BUILDING.



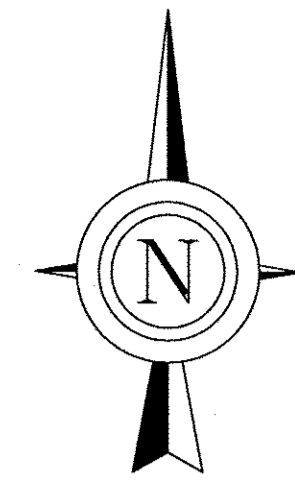
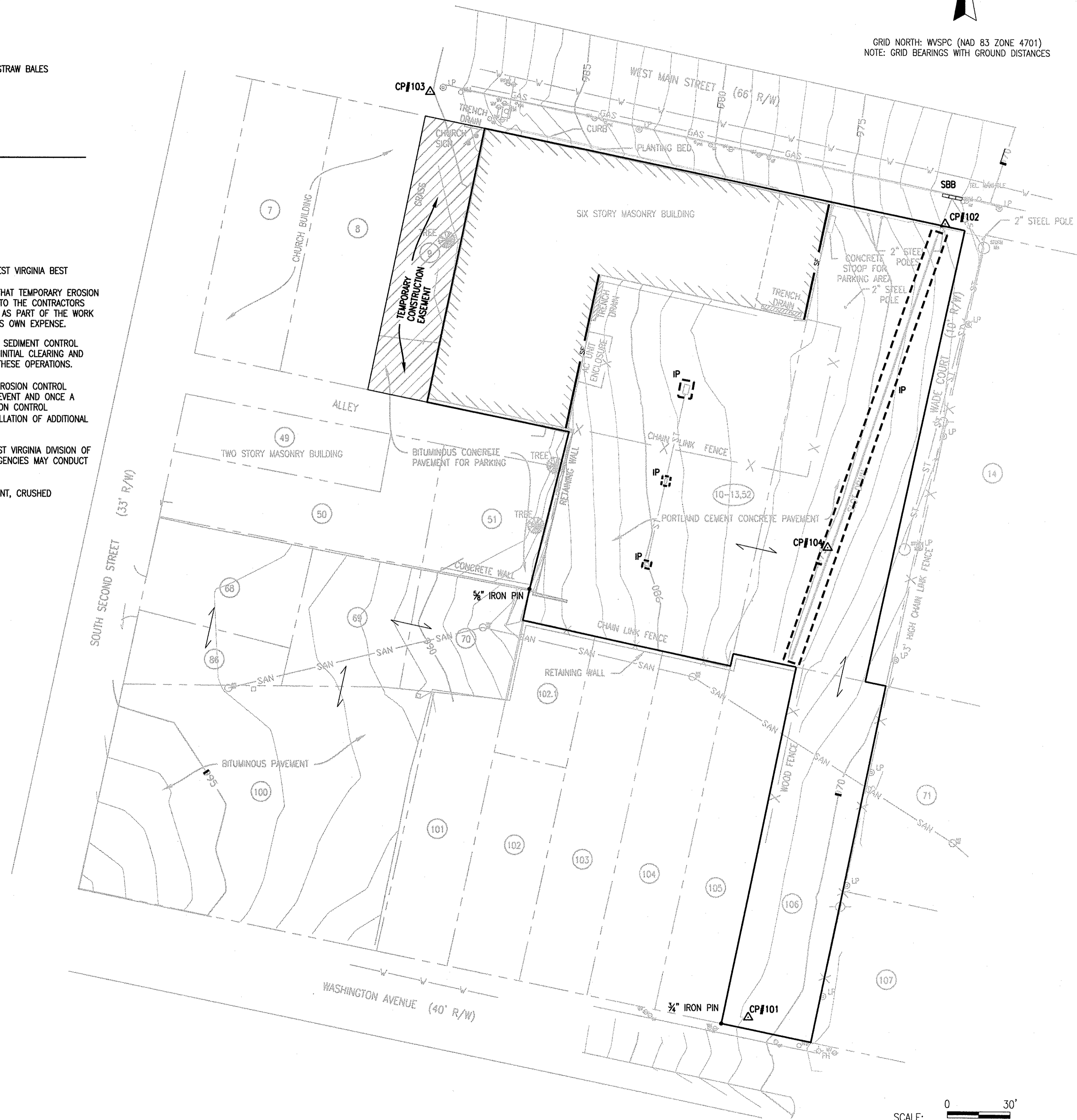
SLOT DRAIN INLET PROTECTION DETAIL
NO SCALE



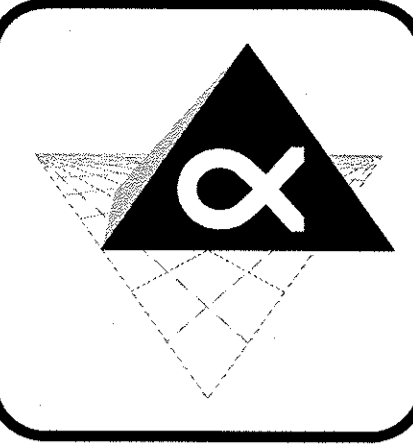
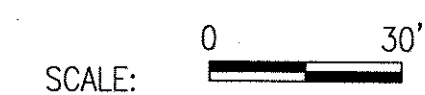
INLET AND TRENCH DRAIN PROTECTION DETAIL
NO SCALE



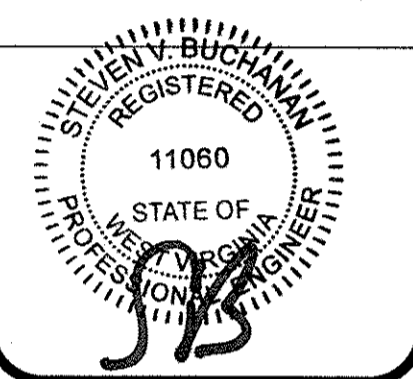
NOTE: ALL CRUSHED STONE AND STRAW SHALL BE DISPOSED OF IN THE BUILDING DEMOLITION AREA.



GRID NORTH: WVSPC (NAD 83 ZONE 4701)
NOTE: GRID BEARINGS WITH GROUND DISTANCES



ALPHA ASSOCIATES, INCORPORATED
ARCHITECTS ENGINEERS SURVEYORS
209 PRAIRIE AVENUE
MORGANTOWN, WV 26501
PHONE: 304-296-8216
FAX: 304-296-8216
TOLL FREE: 800-640-8216
EMAIL: alpha@alphaoc.com
www.alphaoc.com



COPYRIGHT © 2010
ALPHA ASSOCIATES, INC.
ALL RIGHTS RESERVED.

REVISIONS	
ITEM	DATE

STORM WATER POLLUTION PREVENTION PLAN
SCALE: AS NOTED

THE
CLARKSBURG STATE OFFICE BUILDING
WV GENERAL SERVICES DIVISION
PHASE ONE
CLARKSBURG, WEST VIRGINIA

DR'N.: GS
P.M.: SVB P.I.C.: SVB
PROJ. NO.: 0810123.00
DATE: JULY 23, 2010
SHEET NO.:

C-1.1