

DISTRICT	TAX MAP	PARCEL	OWNER	DB-PG
CLARK-CLARKSBURG	24	7	TRUSTEES FIRST PRESBYTERIAN	28-126
CLARK-CLARKSBURG	24	8	TRUSTEES FIRST PRESBYTERIAN	407-194
CLARK-CLARKSBURG	24	9	FIRST PRESBYTERIAN CHURCH	870-147
CLARK-CLARKSBURG	24	10	STATE OF WEST VIRGINIA	1188-584
CLARK-CLARKSBURG	24	11	STATE OF WEST VIRGINIA	1188-584
CLARK-CLARKSBURG	24	12	STATE OF WEST VIRGINIA	1188-584
CLARK-CLARKSBURG	24	13	STATE OF WEST VIRGINIA	1188-584
CLARK-CLARKSBURG	24	14	CITY OF CLARKSBURG	1001-378
CLARK-CLARKSBURG	24	49	SOUTH SECOND STREET REALTY	1201-357
CLARK-CLARKSBURG	24	50	SOUTH SECOND STREET REALTY	1201-357
CLARK-CLARKSBURG	24	51	TRUSTEES FIRST PRESBYTERIAN	1309-814
CLARK-CLARKSBURG	24	52	STATE OF WEST VIRGINIA	1188-578
CLARK-CLARKSBURG	24	68	HARRISON COUNTY BUILDING COMMISSION	1188-578
CLARK-CLARKSBURG	24	69	HARRISON COUNTY BUILDING COMMISSION	1188-578
CLARK-CLARKSBURG	24	70	HARRISON COUNTY BUILDING COMMISSION	1188-578
CLARK-CLARKSBURG	24	71	CITY OF CLARKSBURG	1001-378
CLARK-CLARKSBURG	24	86	HARRISON COUNTY BUILDING COMMISSION	1188-578
CLARK-CLARKSBURG	24	100	HARRISON COUNTY BUILDING COMMISSION	1346-388
CLARK-CLARKSBURG	24	101	HILARY HEIGHTS, LTD	1331-203
CLARK-CLARKSBURG	24	102	GREGORY W. HILL, JR.	1369-39
CLARK-CLARKSBURG	24	102.1	CITY OF CLARKSBURG SANITARY BOARD	1313-1187
CLARK-CLARKSBURG	24	103	BOYD L. WARNER, ET AL.	1012-6
CLARK-CLARKSBURG	24	104	GENA R. DAVIS	1284-1045
CLARK-CLARKSBURG	24	105	MAURICE ALEXANDER DAVIS	WB89-946
CLARK-CLARKSBURG	24	106	STATE OF WEST VIRGINIA	1188-584
CLARK-CLARKSBURG	24	107	CITY OF CLARKSBURG	1001-372

**CONTROL POINT DATA**

POINT NO.	NORTHING	EASTING	ELEVATION	DESCRIPTION
101	284333.868	1731553.944	970.87	MAGNAIL
102	284714.736	1731647.659	971.84	MAGNAIL
103	284776.945	1731401.236	990.23	MAGNAIL
104	284558.899	1731591.674	974.83	MAGNAIL

**GENERAL NOTES**

**EXISTING UTILITIES**

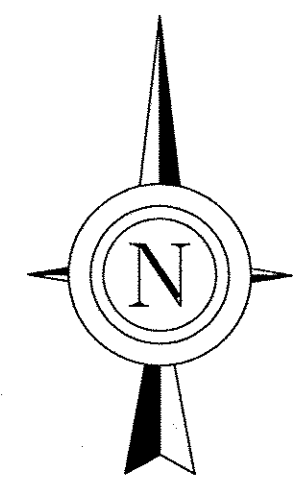
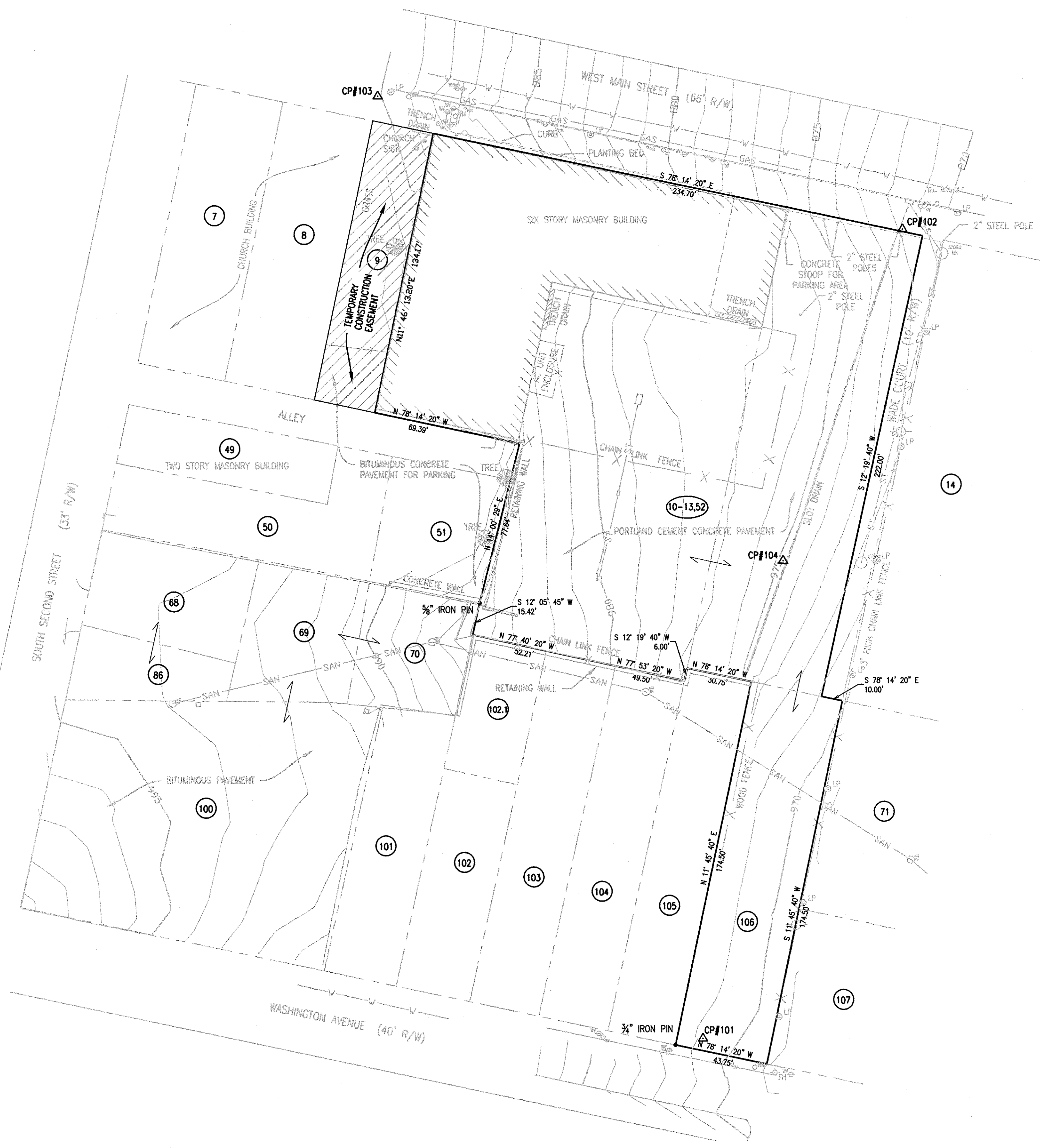
THE LOCATION AND/OR ELEVATIONS OF ALL KNOWN UTILITIES AS SHOWN ON THESE PLANS ARE BASED ON THE BEST AVAILABLE INFORMATION FROM EXISTING PLANS AND FROM FIELD INFORMATION. THE CONTRACTOR SHALL BE RESPONSIBLE FOR NOTIFYING ALL UTILITY COMPANIES AT LEAST FORTY-EIGHT (48) HOURS PRIOR TO COMMENCING WORK ON THIS PROJECT. THE CONTRACTOR SHALL CONTACT MISS UTILITY OF WEST VIRGINIA, INC. AT 1-800-245-4848 FORTY-EIGHT HOURS PRIOR TO COMMENCING WORK. IT IS THE CONTRACTOR'S RESPONSIBILITY TO ASCERTAIN THE STATUS AND LOCATION OF EACH UTILITY PRIOR TO BEGINNING WORK AND TO TAKE THE NECESSARY PRECAUTIONS TO AVOID DAMAGE TO THESE UTILITIES. IN THE EVENT OF DAMAGE OR DISRUPTION OF THESE UTILITIES THE CONTRACTOR SHALL IMMEDIATELY NOTIFY AN OFFICIAL OF THE AFFECTED UTILITY AND LEND ALL POSSIBLE ASSISTANCE IN RESTORING SERVICE. THE CONTRACTOR SHALL ASSUME ALL COSTS ASSOCIATED WITH THE REPAIR AND INTERRUPTION OF SUCH SERVICES.

**THE FOLLOWING OPERATORS WERE NOTIFIED VIA ONE CALL TICKET NO. 3050087:**

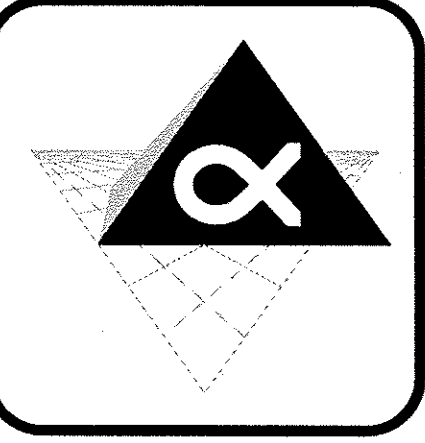
- AC VERIZON WEST VIRGINIA, INC.
- CLK CLARKSBURG, CITY OF
- CWB CLARKSBURG WATER BOARD
- HA DOMINION HOPE
- MPC ALLEGHENY POWER
- ACC ALLEGHENY COMMUNICATIONS CONNECT
- FIB FIBERNET LLC
- FCC TIME WARNER CABLE

**BENCH MARKS**

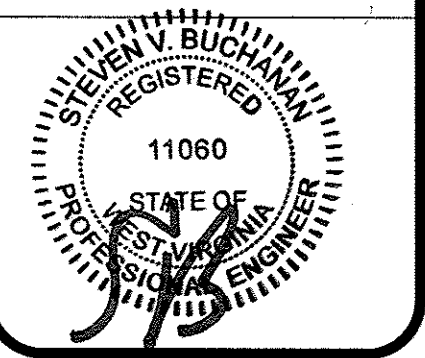
THE CONTRACTOR SHALL HOLD BENCH MARK LOCATIONS THROUGHOUT THE LIFE OF THE PROJECT. IN THE EVENT THAT A BENCH MARK IS DISTURBED, THE CONTRACTOR, AS DIRECTED BY THE PROJECT ENGINEER, WILL RELOCATE OR REESTABLISH THE BENCH MARK. NO ADDITIONAL PAYMENT OR COMPENSATION WILL BE MADE FOR THIS WORK.



GRID NORTH: WVSPC (NAD 83 ZONE 4701)  
NOTE: GRID BEARINGS WITH GROUND DISTANCES



**ALPHA**  
ASSOCIATES, INCORPORATED  
ARCHITECTS ENGINEERS SURVEYORS  
209 PRAIRIE AVENUE  
MORGANTOWN, WV 26501  
PHONE: 304-296-8216  
FAX: 304-296-8216  
TOLL FREE: 800-640-8216  
EMAIL: alpha@alphaec.com  
www.alphaec.com



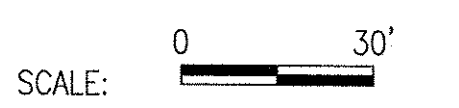
COPYRIGHT © 2010  
ALPHA ASSOCIATES, INC.  
ALL RIGHTS RESERVED.

REVISIONS	
ITEM	DATE

**EXISTING SITE SURVEY**  
SCALE: AS NOTED

THE  
CLARKSBURG STATE OFFICE BUILDING  
WV GENERAL SERVICES DIVISION  
PHASE ONE  
CLARKSBURG, WEST VIRGINIA

DR'N.: GS  
P.M.: SVB P.I.C.: SVB  
PROJ. NO.: 0810123.00  
DATE: JULY 23, 2010  
SHEET NO.:



**C-1.0**