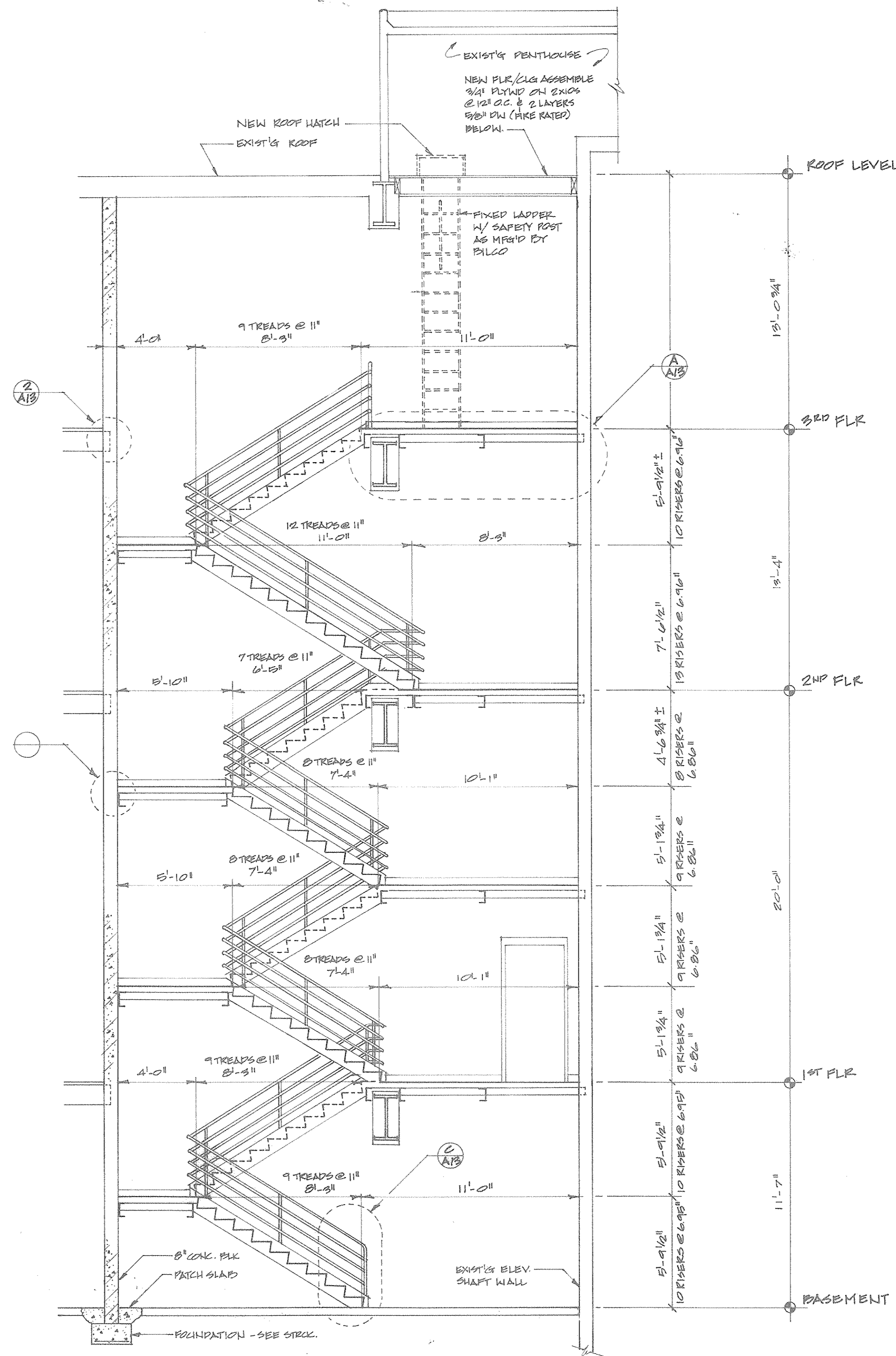
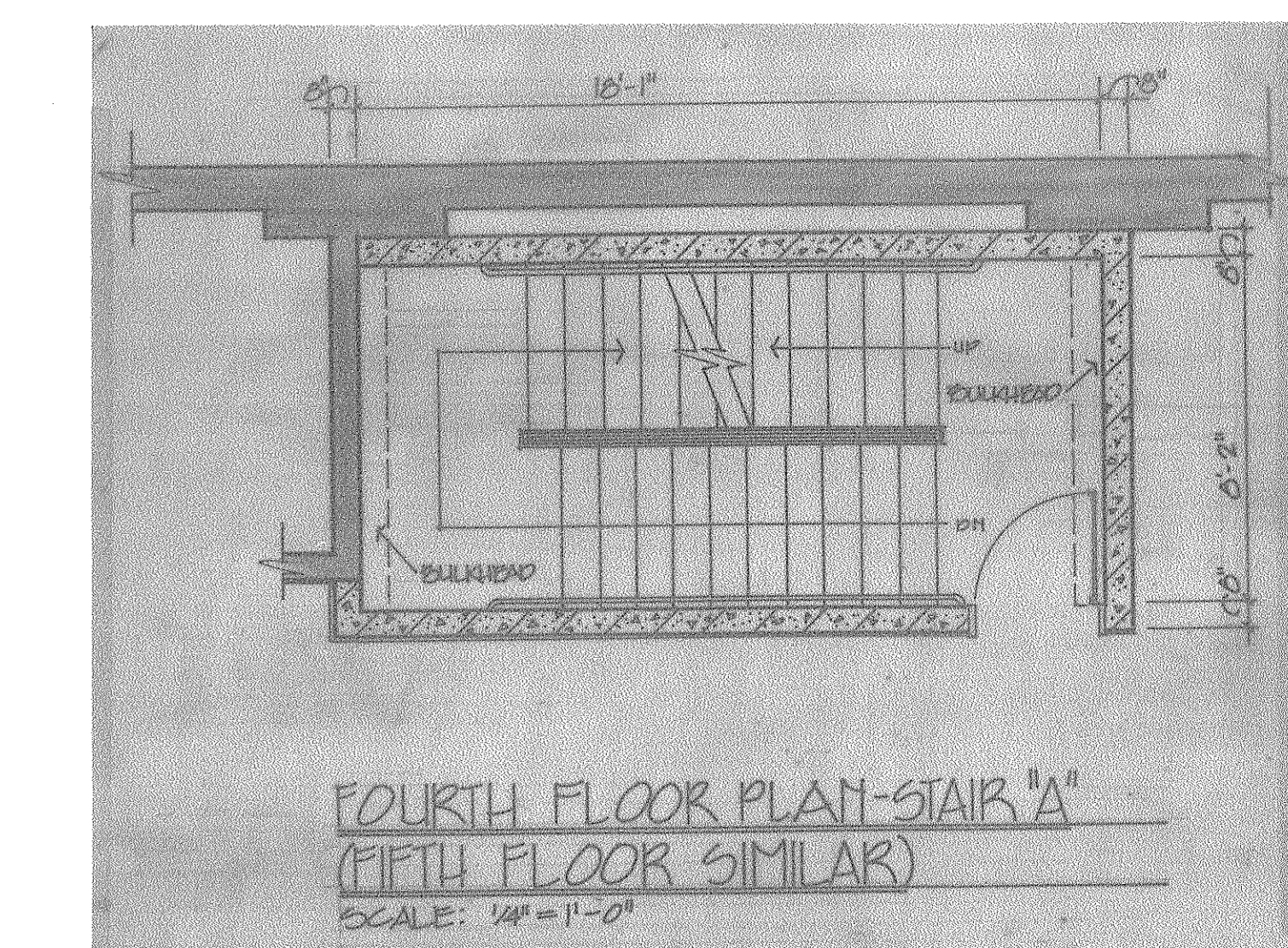
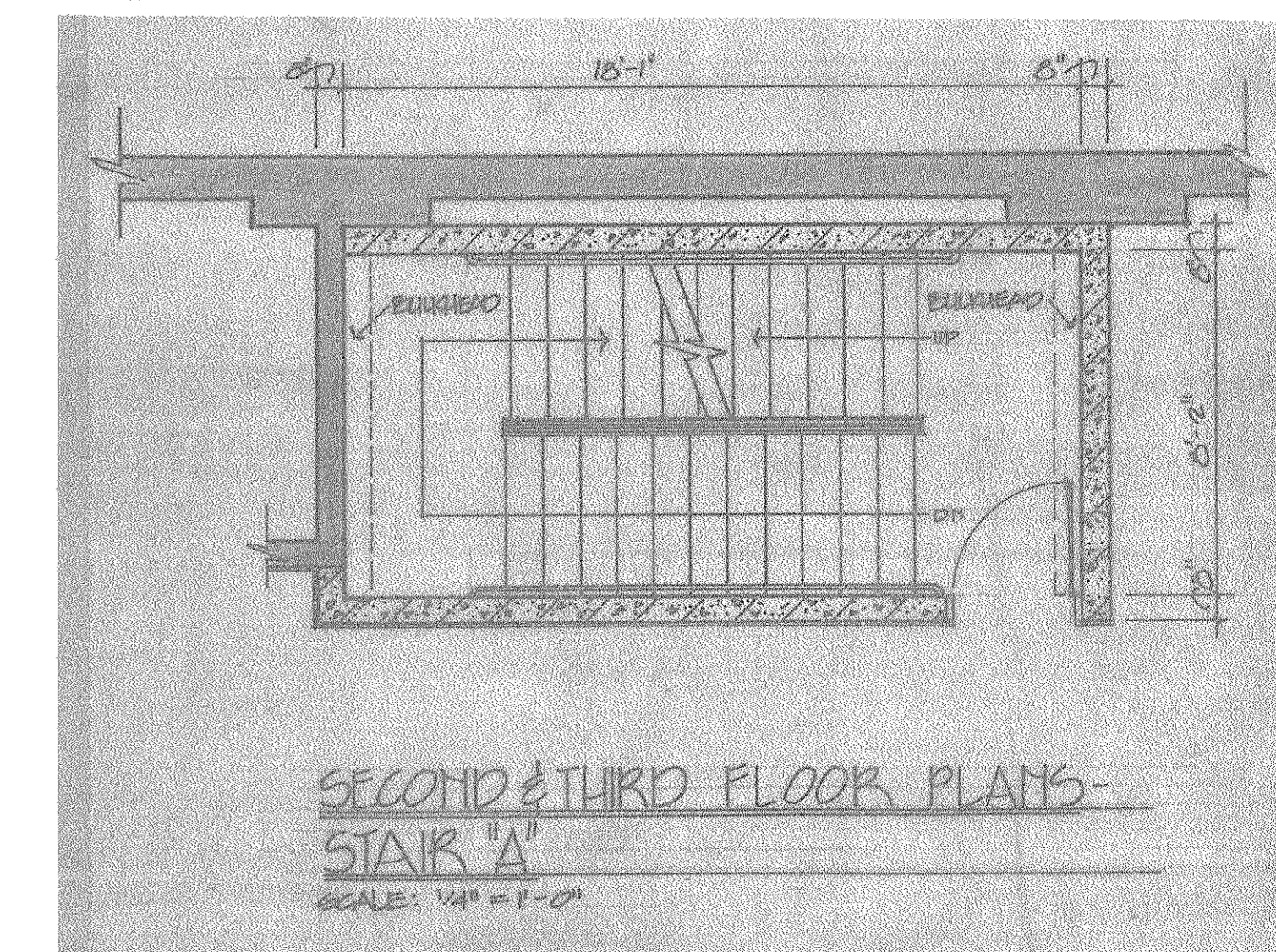
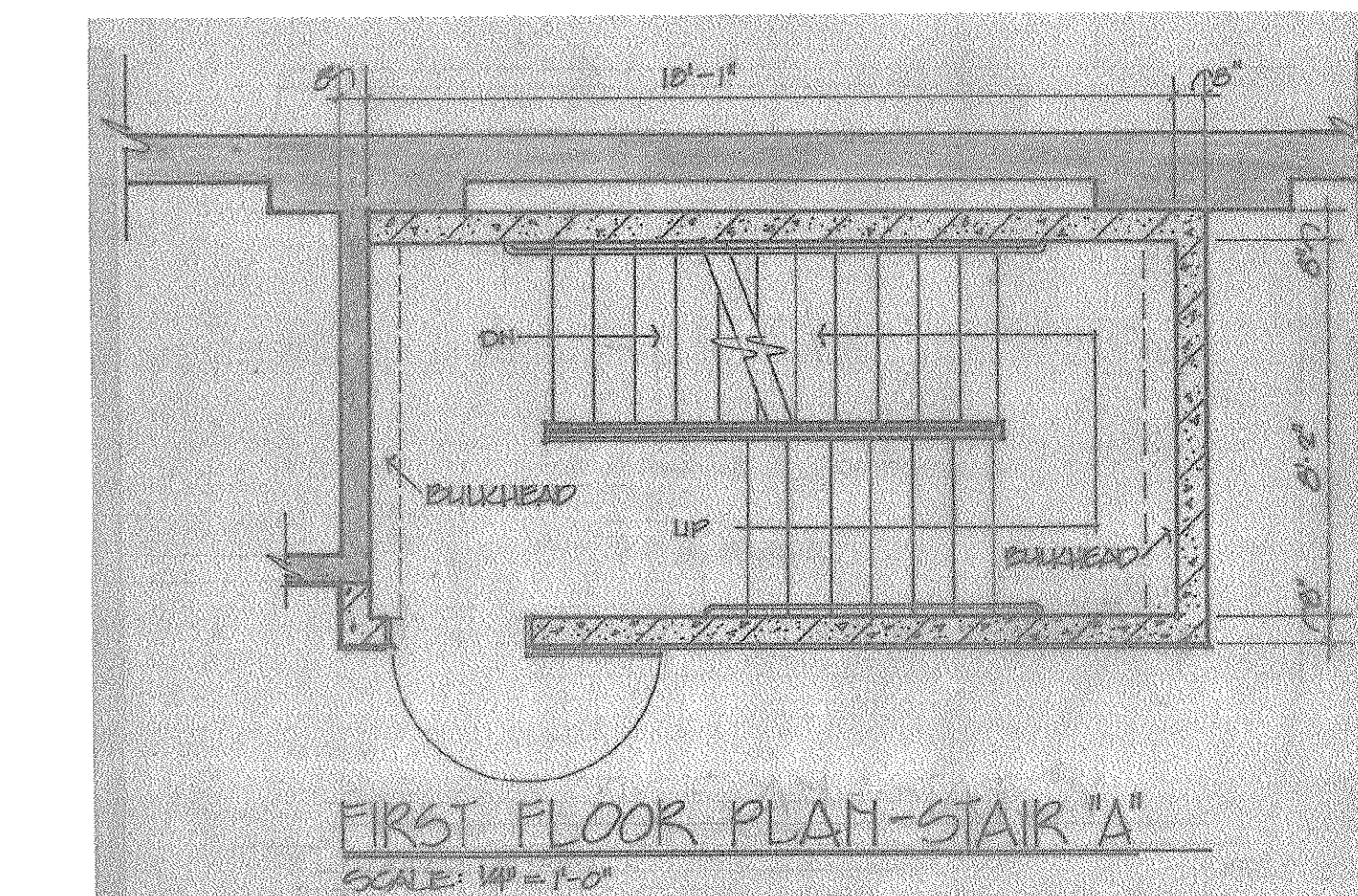
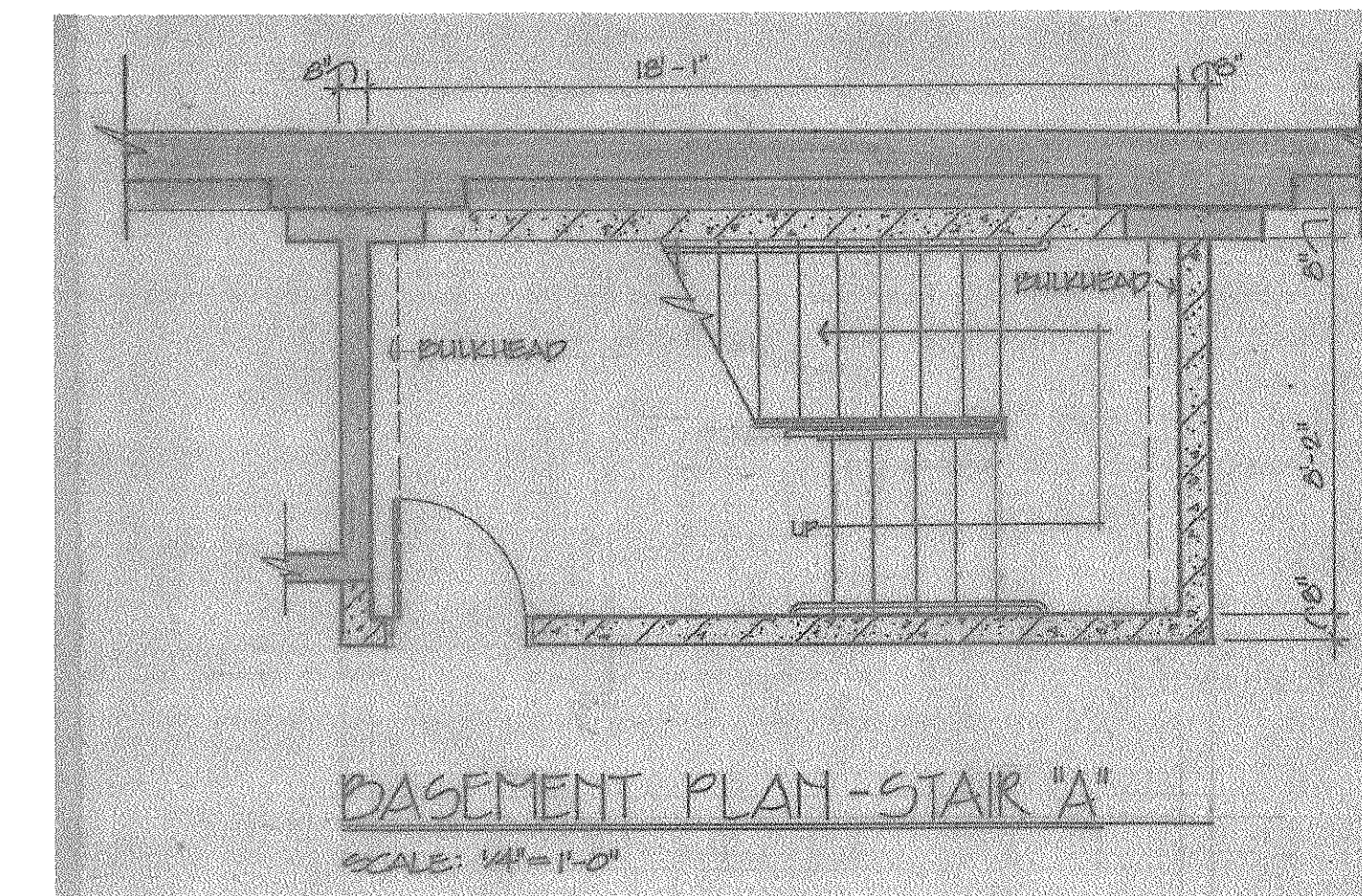


SECTION THRU STAIRS "A" & "B" (SIMILAR)
SCALE: 1/4" = 1'-0"

NOTE: STAIR RAILS @ STAIRS A & B WILL BE SIMILAR TO STAIR RAILS @ STAIR 'C' - 3 INTERMEDIATE RAILS SPACED EQUALLY BETWEEN BOT. OF TOP RAIL & TOP OF STRINGER



SECTION THRU STAIR "C"
SCALE: 1/4" = 1'-0"



ENLARGED PLANS - STAIR "A" (STAIR "B" SIM)
SCALE: AS NOTED

FOR PURPOSES OF CONTRACTOR EVALUATION.
CONDITIONS DEPICTED IN DRAWING HAVE NOT BEEN VERIFIED.