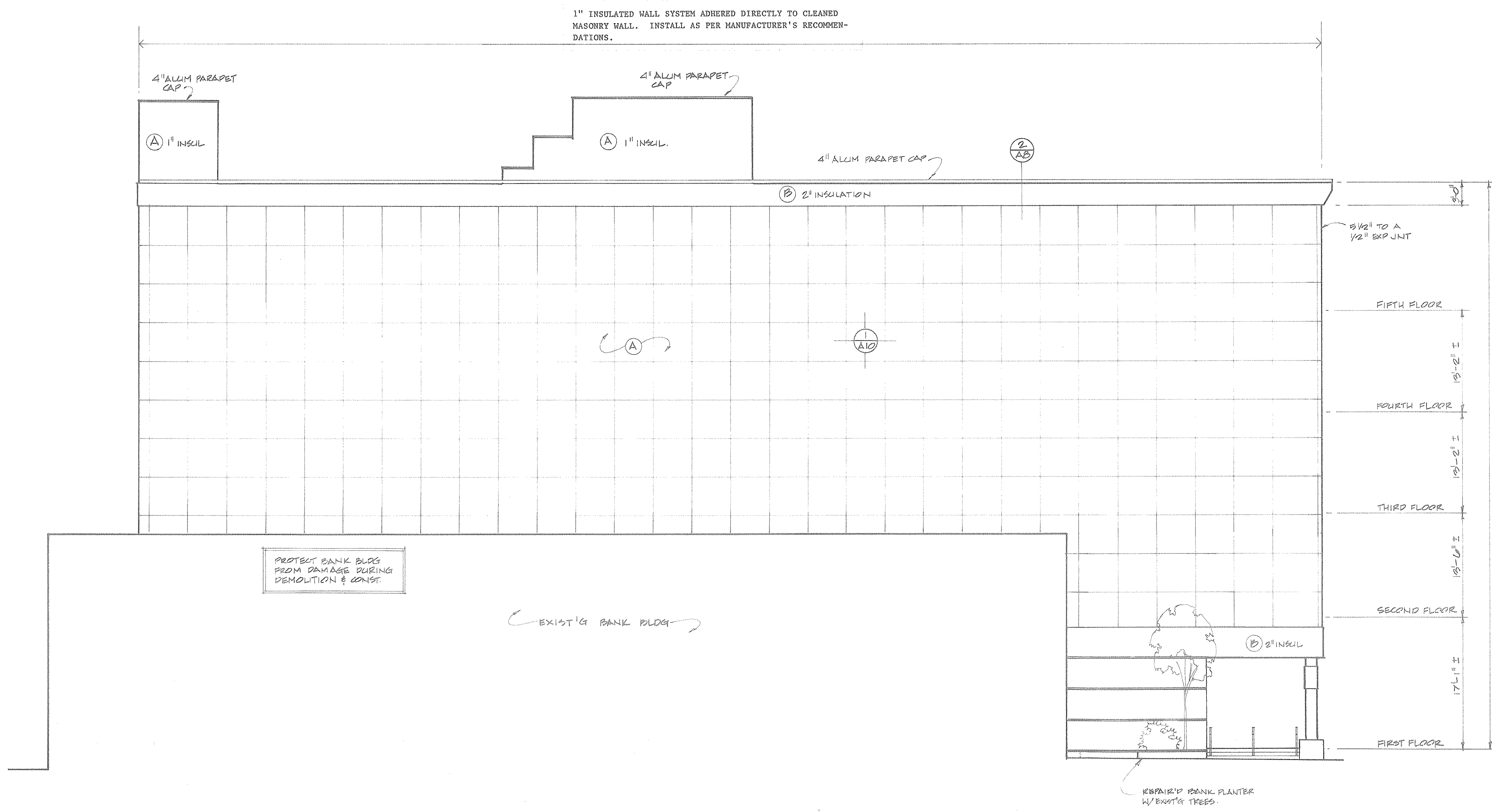
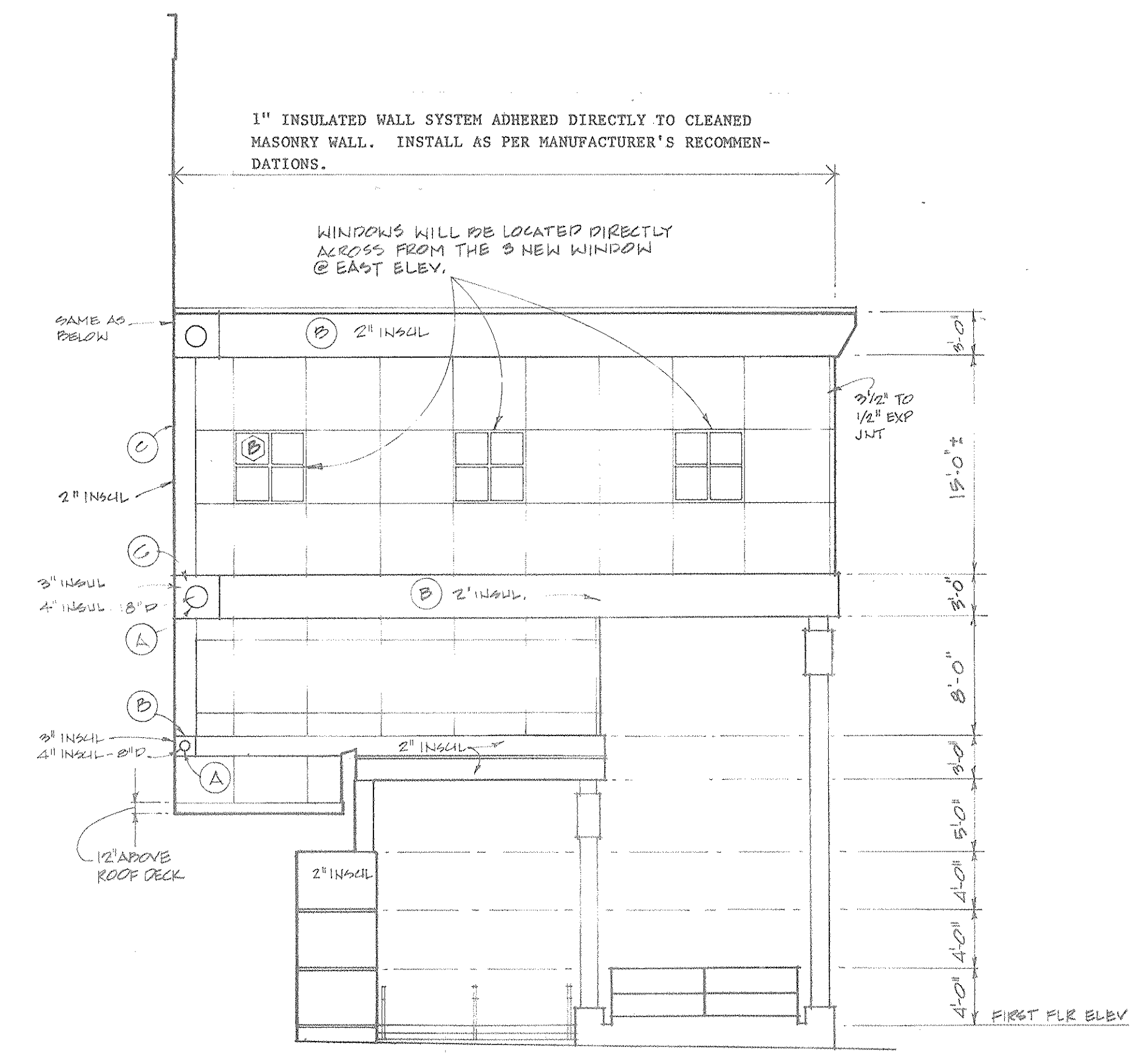


DETAIL AT FREESTANDING BM. & COL.
SCALE: 3/4" = 1'-0"



WEST ELEVATION
SCALE 1/8" = 1'-0"



PARTIAL WEST ELEV.
SCALE 1/8" = 1'-0"

**FOR PURPOSES
OF
CONTRACTOR EVALUATION.
CONDITIONS DEPICTED IN DRAWING
HAVE NOT BEEN VERIFIED.**

WEST ELEVATION