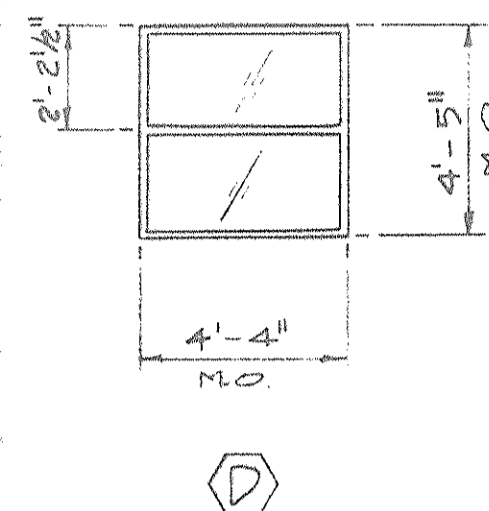
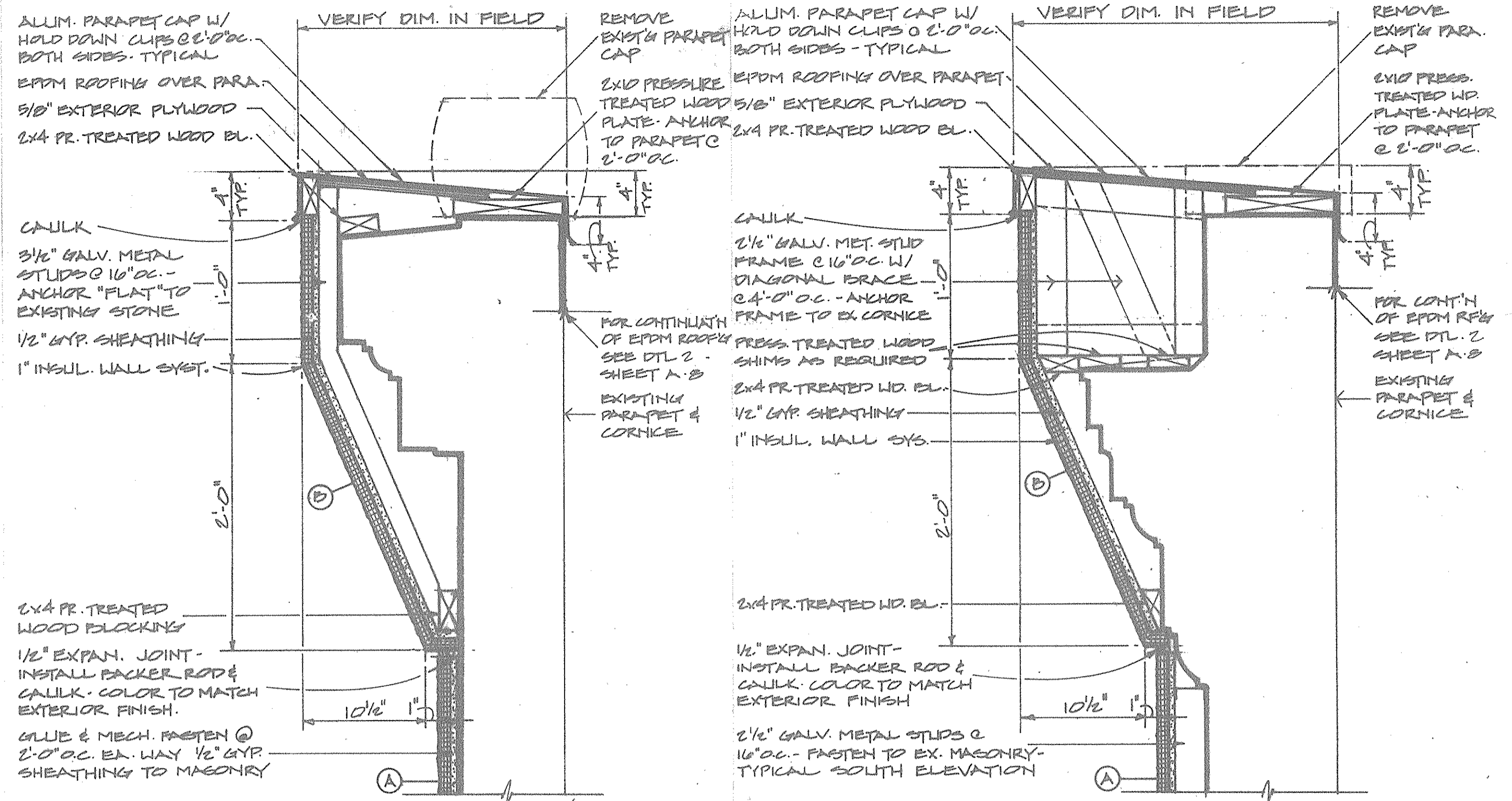
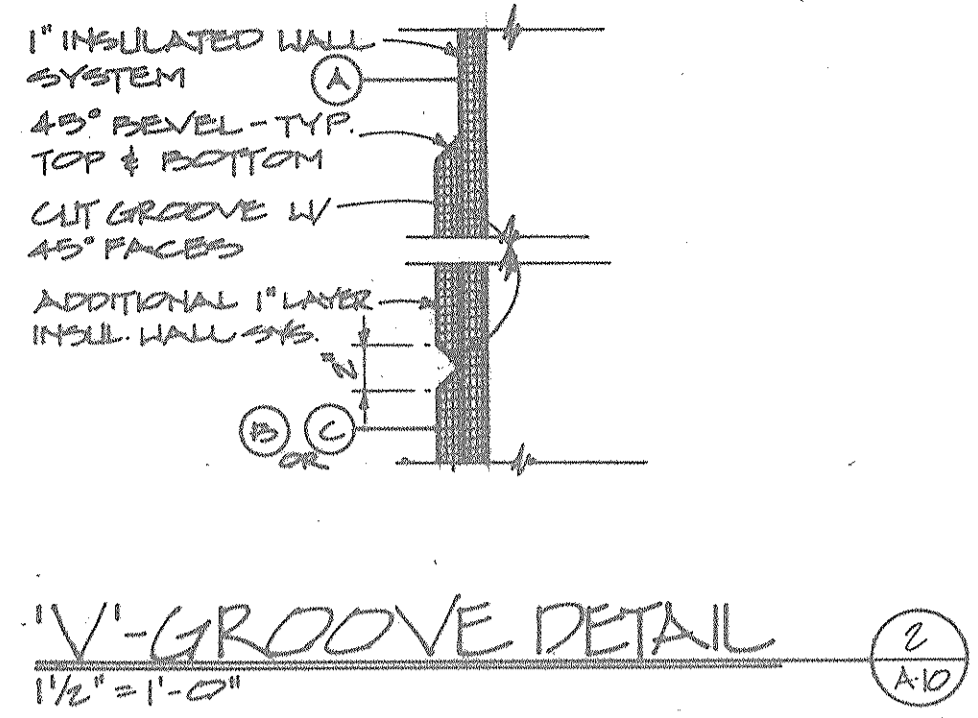
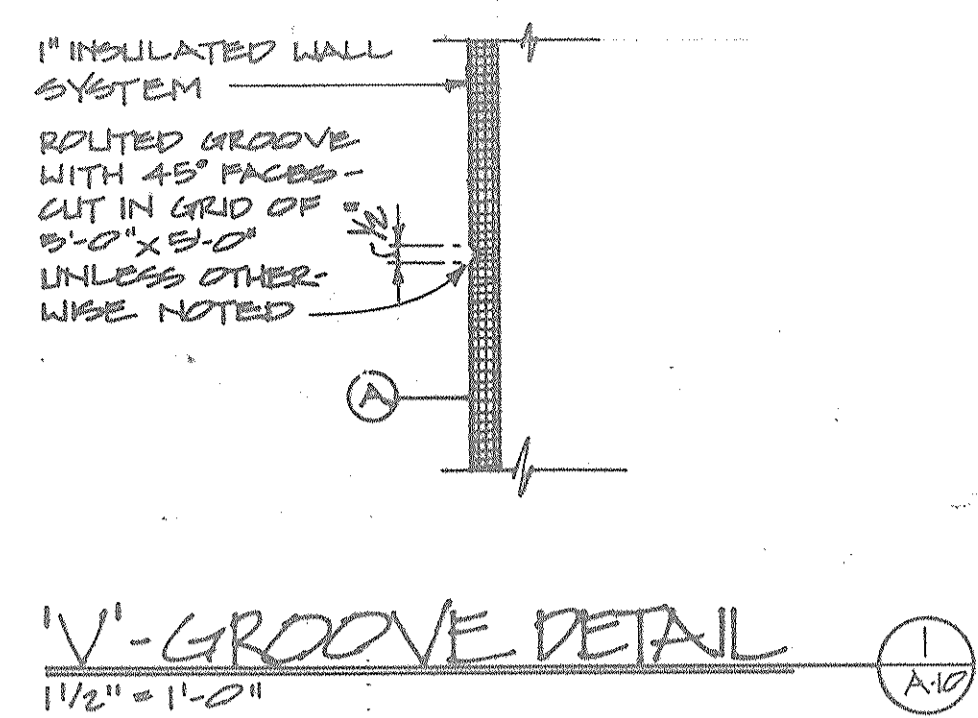


NOTE: ALL WINDOWS WILL HAVE BRONZE ANODIZED ALUMINUM FRAMES W/ A THERMAL BREAK. ALL GLAZING WILL BE FIXED 1" INSULATED GLASS, OUTSIDE PANE - BRONZE, INSIDE PANE - CLEAR.

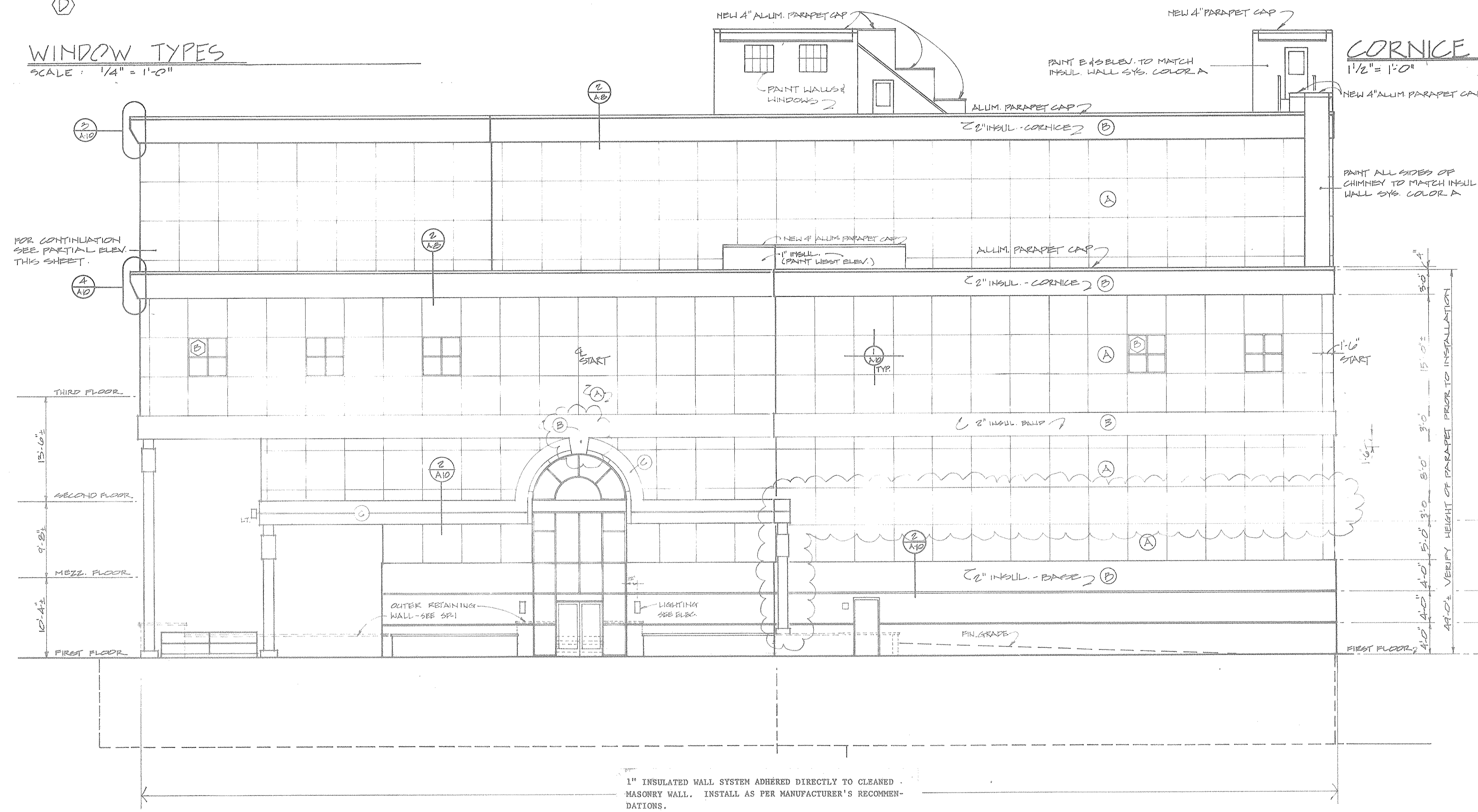


WINDOW TYPES
SCALE: 1/4" = 1'-0"

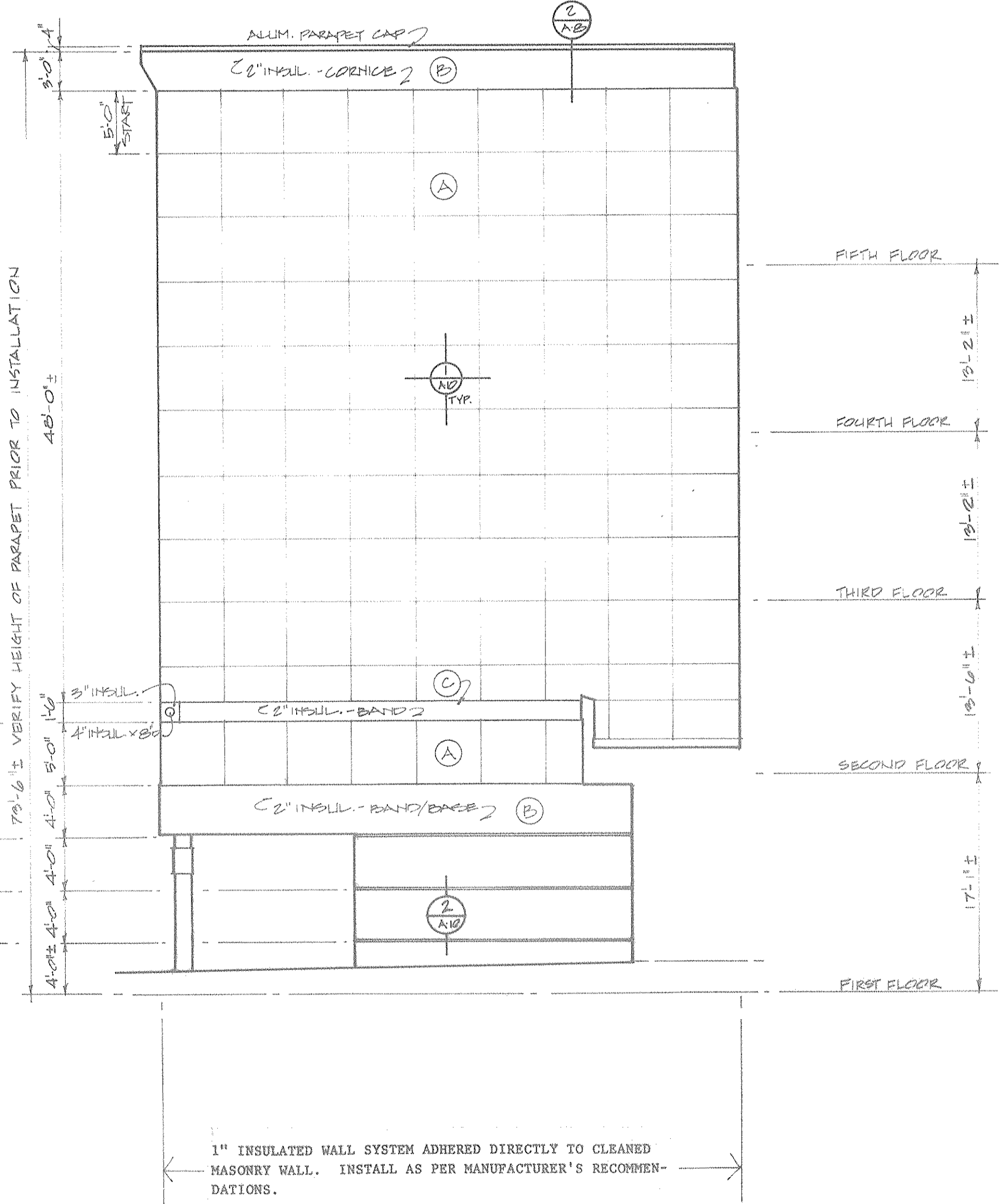


CORNICE DETAIL
SCALE: 1/2" = 1'-0"

CORNICE DETAIL
SCALE: 1/2" = 1'-0"



EAST ELEVATION
SCALE: 1/8" = 1'-0"



PARTIAL EAST ELEV
SCALE: 1/8" = 1'-0"

FOR PURPOSES OF CONTRACTOR EVALUATION. CONDITIONS DEPICTED IN DRAWING HAVE NOT BEEN VERIFIED.

EAST ELEVATION