

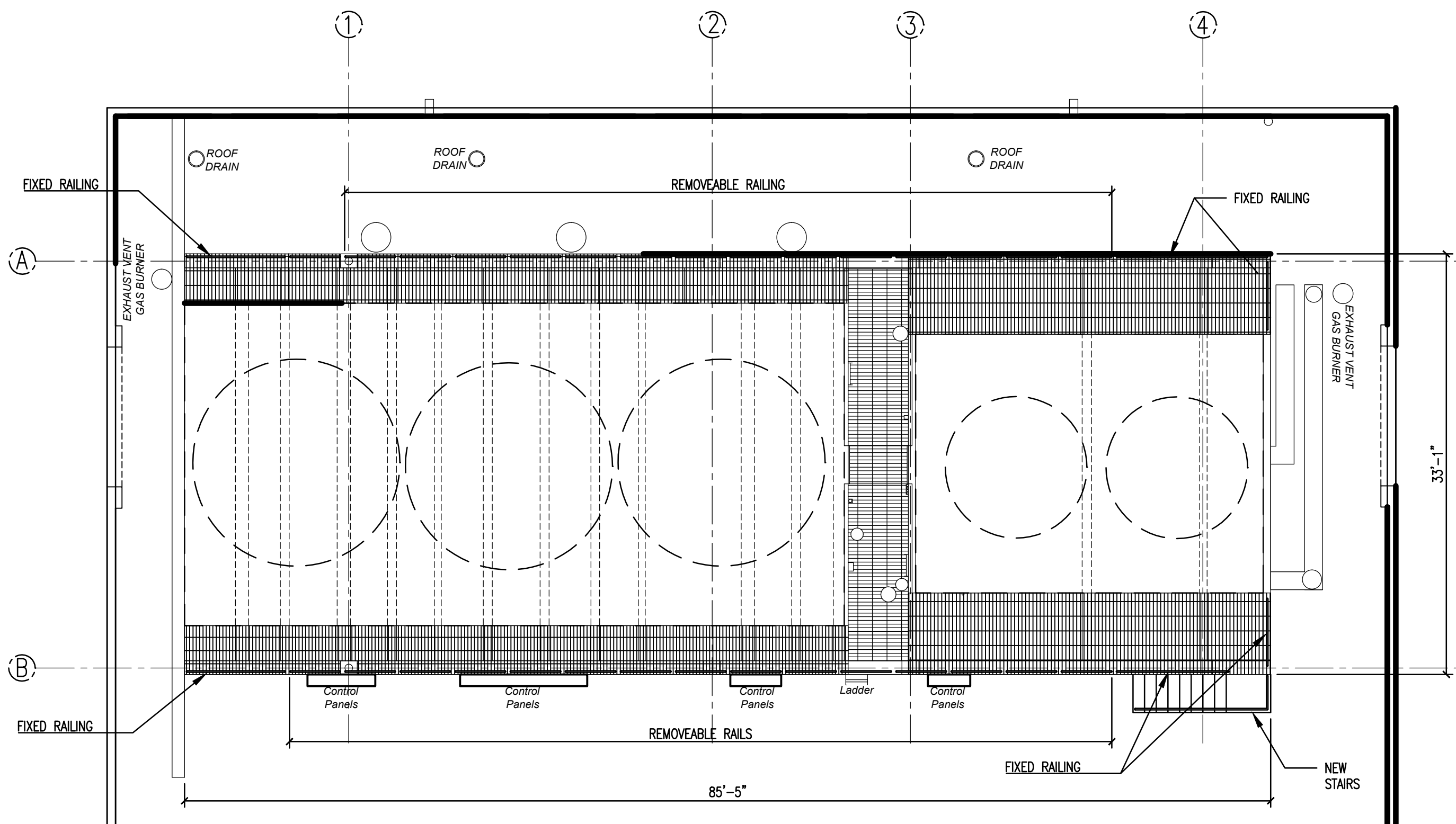
Building 11
Cooling Tower Platform
CAPITOL COMPLEX
 218 CALIFORNIA AVENUE
 CHARLESTON, WEST VIRGINIA 25305

REVISIONS	
DATE	NO.

SEAL

REVISED	
DATE	SCALE
DRAWN BY	CHK. BY

DRAWING NUMBER
A1



1 PARTIAL ROOF PLAN
 1/8" = 1'-0"

GENERAL NOTES

1. CONTRACTOR TO VERIFY ALL FIELD CONDITIONS AND REPORT ANY DESCREPENCIES TO THE STATES PROJECT REPRESENTATIVE.
2. CONTRACTOR TO TAKE CAUTION NOT TO DAMAGE ROOFING MATERIAL. REPAIRS FOR DAMAGE TO THE EXISTING ROOFING DURING CONSTRUCTION SHALL BE THE RESPONSIBILITY OF THE CONTRACTOR.
3. CONTRACTOR TO COORDINATE CONSTRUCTION ACCESS AND ALL ISSUES OF SCHEDULING WITH THE STATES PROJECT REPRESENTATIVE.