

**MAPPING NOTES**

1. ALL UNDERGROUND UTILITIES AS SHOWN HEREON ARE APPROXIMATE LOCATIONS AND ARE BASED ON UTILITY COMPANY MARKINGS, EXISTING STRUCTURE LOCATIONS AND PLAN INFORMATION PROVIDED BY OTHERS. IT IS THE CONTRACTORS RESPONSIBILITY TO VERIFY LOCATIONS PRIOR TO CONSTRUCTION.
2. TOPOGRAPHIC MAPPING COMPILED FROM AERIAL SURVEY PERFORMED BY GEO ONE, INC. OF REYNOLDSBURG, OH ON NOVEMBER 19, 2010. SURVEY CONTROL AND TOPOGRAPHIC DATA RANDOMLY CHECKED FOR ACCURACY BY CAPITOL ENGINEERING, INC. BY FIELD SURVEY.
3. PROPERTY SURVEY AS SHOWN ON THE PLAT TITLED "PLAT SURVEY FOR THE STATE OF WEST VIRGINIA, ADJUTANT GENERAL'S DEPARTMENT MOOREFIELD DISTRICT, HARDY COUNTY, WEST VIRGINIA" DATED 7-13-10. PERFORMED BY MAYHEW SURVEYING INC. OF ROMNEY, WV.

**GENERAL NOTES**

1. DURABLE ROCK FILL IS REQUIRED FOR MANY OF THE FILL AREAS. SEE NOTES ON PLAN FOR MORE INFORMATION.
2. EXISTING SOILS MUST BE UNDERCUT TO ROCK IN ALL AREAS REQUIRING DURABLE ROCK FILL. (REMOVE SOIL OVERBURDEN)
3. ALL FILL MUST BE BENCHED INTO ROCK AS FILL PROGRESSES UP THE SLOPES. (REMOVE SOIL OVERBURDEN)
4. READINESS CENTER BUILDING SHALL BE UNDERCUT 16" BELOW FINISH FLOOR ELEVATION. BACKFILL SHALL CONSIST OF CRUSHED AGGREGATE UNDER FLOOR SLABS AND CONTROLLED LOW STRENGTH MATERIAL UNDER FOUNDATIONS.

**GRADING NOTES**

- 1 12" YARD DRAIN
- 2 TYPE B INLET
- 3 JUNCTION BOX
- 4 CONCRETE HEADWALL
- 5 12" TRENCH DRAIN
- 6 FREE DRAINING BASE TRENCH
- 7 TYPE 1 DITCH
- 8 TYPE 2 DITCH
- 9 TYPE 3 DITCH
- 10 TYPE 4 DITCH
- 11 DRAIN BASIN
- 12 TYPE 'G' INLET

1. WHERE SMALL PIPES TIE INTO LARGE PIPES OUTSIDE OF AN INLET OR JUNCTION, THE SMALL PIPE SHALL BE INSTALLED IN THE UPPER HALF OF THE LARGER PIPE. THE OPENING AROUND THE SMALLER PIPE SHALL BE SEALED WITH NON-SHRINK GROUT OR APPROVED MATERIAL.
2. SLOPE LAWN TO YARD DRAINS

**LEGEND**

- SLOPE INDICATION ARROW OR GATE OPENING DIRECTION (FOR REFERENCE ONLY)

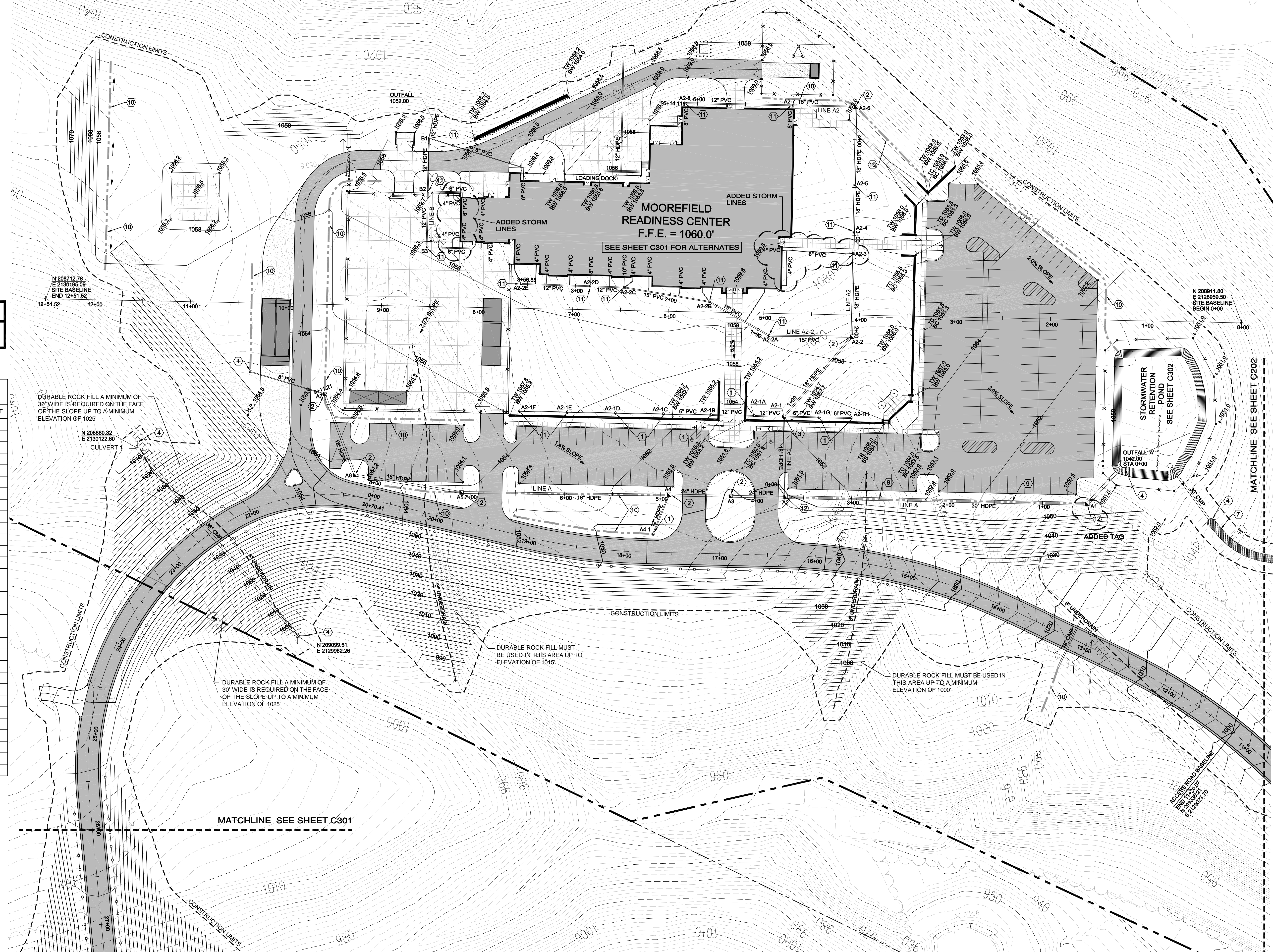
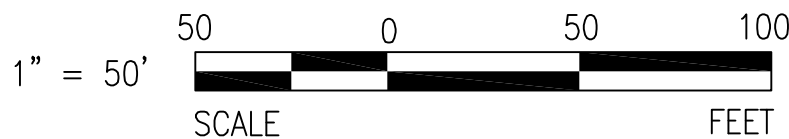
**STORMWATER STRUCTURE SCHEDULE (BASE BID ONLY)**

NO.	RIM EL.	INVERT IN	INVERT IN	INVERT OUT
A1	1048.5	30" 1042.4		30" 1042.3
A2	1049.0	24" 1044.0	18" 1044.0	30" 1043.9
A2-1	1054.6	18" 1046.1	12" 1047.0	6" 1046.0
A2-1A	1054.0	12" 1047.7		12" 1047.6
A2-1B	1054.0	6" 1048.3		12" 1048.2
A2-1C	1054.3	6" 1048.9		6" 1048.8
A2-1D	1055.0	6" 1049.5		6" 1049.4
A2-1E	1055.5	6" 1051.1		6" 1050.0
A2-1F	1055.5			6" 1051.6
A2-1G	1054.0	6" 1051.5		6" 1051.4
A2-1H	1055.0			6" 1052.0
A2-2	1059.0	18" 1050.9	DELETED	6" 1050.8
A2-2A	1058.5	15" 1053.2	DELETED	15" 1053.1
A2-2B	1059.0	12" 1054.3	4" 1054.3	15" 1054.2
A2-2C	1059.5	12" 1055.3	10" 1055.3	4" 1055.3
A2-2D	1059.5	12" 1055.8	8" 1055.8	12" 1055.7
A2-2E	1059.0	6" 1056.6		12" 1056.5
A2-3	1059.5	18" 1053.1	DELETED	6" 1053.1
A2-4	1059.5	18" 1053.5	DELETED	18" 1053.3
A2-5	1059.5	18" 1054.0		18" 1053.9
A2-6	1058.0	12" 1054.9		18" 1054.8
A2-7	1059.5	12" 1055.6	8" 1055.6	12" 1055.5
A2-8	1059.5	8" 1056.8		12" 1056.7
A3	1049.0	24" 1044.6		24" 1044.5
A4	1050.0	24" 1045.2		24" 1045.1
A5	1053.0	24" 1046.9		24" 1046.8
A6	1053.0	24" 1047.9		24" 1047.8
A7	1053.0	8" 1048.5		24" 1048.6
B1	1057.0	12" 1054.5	6" 1054.5	12" 1054.4
B2	1059.5	12" 1055.3	6" 1055.3	12" 1055.2
B3	1058.2	6" 1056.0		12" 1055.9

**ROAD SLOPE TRANSITION TABLE**

BEGIN	0%	END
15+62.8	15+87.8	16+12.8
17+47.0	17+72.0	17+97.0
20+90.2	21+15.2	21+40.2
25+46.7	25+71.7	25+96.7
27+50.0	27+75.0	28+00.0

NOTE: TRANSITION AT 0.1' PER TEN FEET



300 Summers Street  
Suite 1200  
Charleston, WV 25301  
(304) 342-2151  
FAX (304) 342-2197



Capitol Engineering, Inc.  
1206 Kanawha Blvd E,  
Suite 201  
Charleston, WV 25302



DRAWN BY: JMS  
APPROVED BY: JMH  
DATE: 07-1-11  
REVISED: 08-3-11  
COMM. NO. 06260



GENERAL CONTRACTOR & ALL SUB-CONTRACTORS SHALL VERIFY ALL DIMENSIONS AND FIELD CONDITIONS BEFORE EXECUTING ANY WORK. STRUCTURE IS DESIGNED TO BE SELF-SUPPORTING WITH COMPLETE GENERAL BRACING REQUIREMENTS AS NECESSARY. GENERAL CONTRACTOR & SUB-CONTRACTORS ARE SOLELY RESPONSIBLE FOR CONSTRUCTION SCHEDULE AND SEQUENCE.

© 2010 Bastian & Harris, Architects

NEW FACILITIES FOR THE  
MOOREFIELD READINESS CENTER  
MOOREFIELD, WEST VIRGINIA  
CONSTRUCTION & FACILITIES MANAGEMENT OFFICE  
WEST VIRGINIA ARMY NATIONAL GUARD

GRADING AND DRAINAGE PLAN

C300