

MAPPING NOTES

1. ALL UNDERGROUND UTILITIES AS SHOWN HEREON ARE APPROXIMATE LOCATIONS AND ARE BASED ON UTILITY COMPANY MARKINGS, EXISTING STRUCTURE LOCATIONS AND PLAN INFORMATION PROVIDED BY OTHERS. IT IS THE CONTRACTORS RESPONSIBILITY TO VERIFY LOCATIONS PRIOR TO CONSTRUCTION.
2. TOPOGRAPHIC MAPPING COMPILED FROM AERIAL SURVEY PERFORMED BY GEO ONE, INC. OF REYNOLDSBURG, OH ON NOVEMBER 19, 2010. SURVEY CONTROL AND TOPOGRAPHIC DATA RANDOMLY CHECKED FOR ACCURACY BY CAPITOL ENGINEERING, INC. BY FIELD SURVEY.
3. PROPERTY SURVEY AS SHOWN ON THE PLAT TITLED "PLAT SURVEY FOR THE STATE OF WEST VIRGINIA, ADJUTANT GENERAL'S DEPARTMENT MOOREFIELD DISTRICT, HARDY COUNTY, WEST VIRGINIA" DATED 7-13-10. PERFORMED BY MAYHEW SURVEYING INC. OF ROMNEY, WV.



B&H
Bastian & Harris
ARCHITECTS

300 Summers Street
Suite 1200
Charleston, WV 25301
(304) 342-2151
FAX (304) 342-2197

CEI

Capitol Engineering, Inc.
1206 Kanawha Blvd E,
Suite 201
Charleston, WV 25302

CMA
ENGINEERING
824 CROSS LANES DRIVE
CHARLESTON, WV 25311
PHONE: (304) 343-0316
5 RIDGLE COURT
MORGANTOWN, WV 26505
PHONE: (304) 598-2558

DRAWN BY: JMS
APPROVED BY: JMH
DATE: 07-1-11
REVISED: 09-9-11

COMM. NO. 06260



GENERAL CONTRACTOR & ALL SUB-CONTRACTORS SHALL FIELD VERIFY ALL DIMENSIONS AND FIELD CONDITIONS BEFORE EXECUTING ANY WORK. STRUCTURE IS DESIGNED TO BE SELF-SUPPORTING. GENERAL CONTRACTOR AND DIRECTOR TO DETERMINE TEMPORARY BRACING REQUIREMENTS AS NECESSARY. GENERAL CONTRACTOR & SUB-CONTRACTORS ARE SOLELY RESPONSIBLE FOR CONSTRUCTION SCHEDULE AND SEQUENCE.

© 2010 Bastian & Harris, Architects

NEW FACILITIES FOR THE
MOOREFIELD READINESS CENTER
MOOREFIELD, WEST VIRGINIA
CONSTRUCTION & FACILITIES MANAGEMENT OFFICE
WEST VIRGINIA ARMY NATIONAL GUARD

SITE LAYOUT

C200

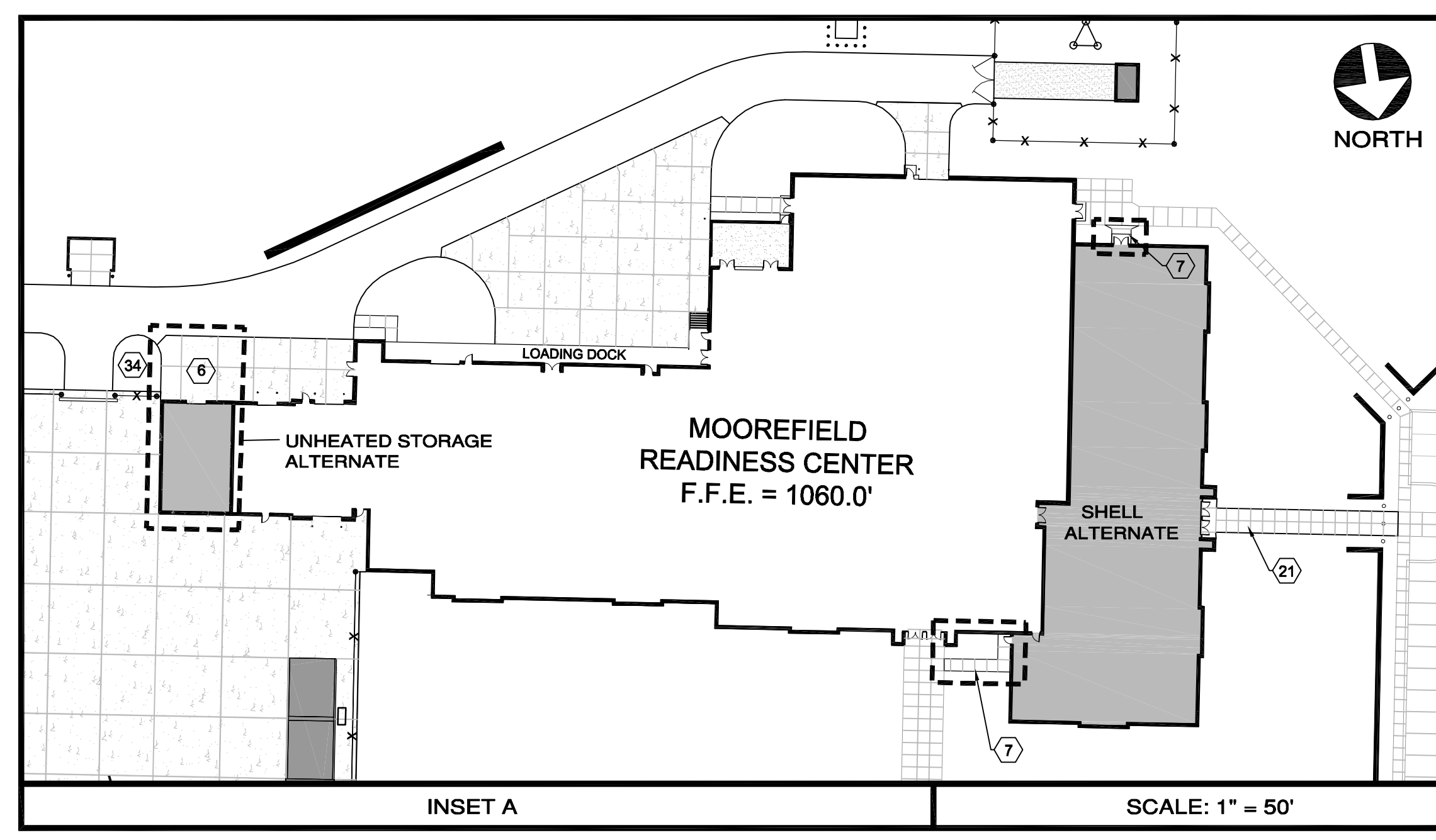
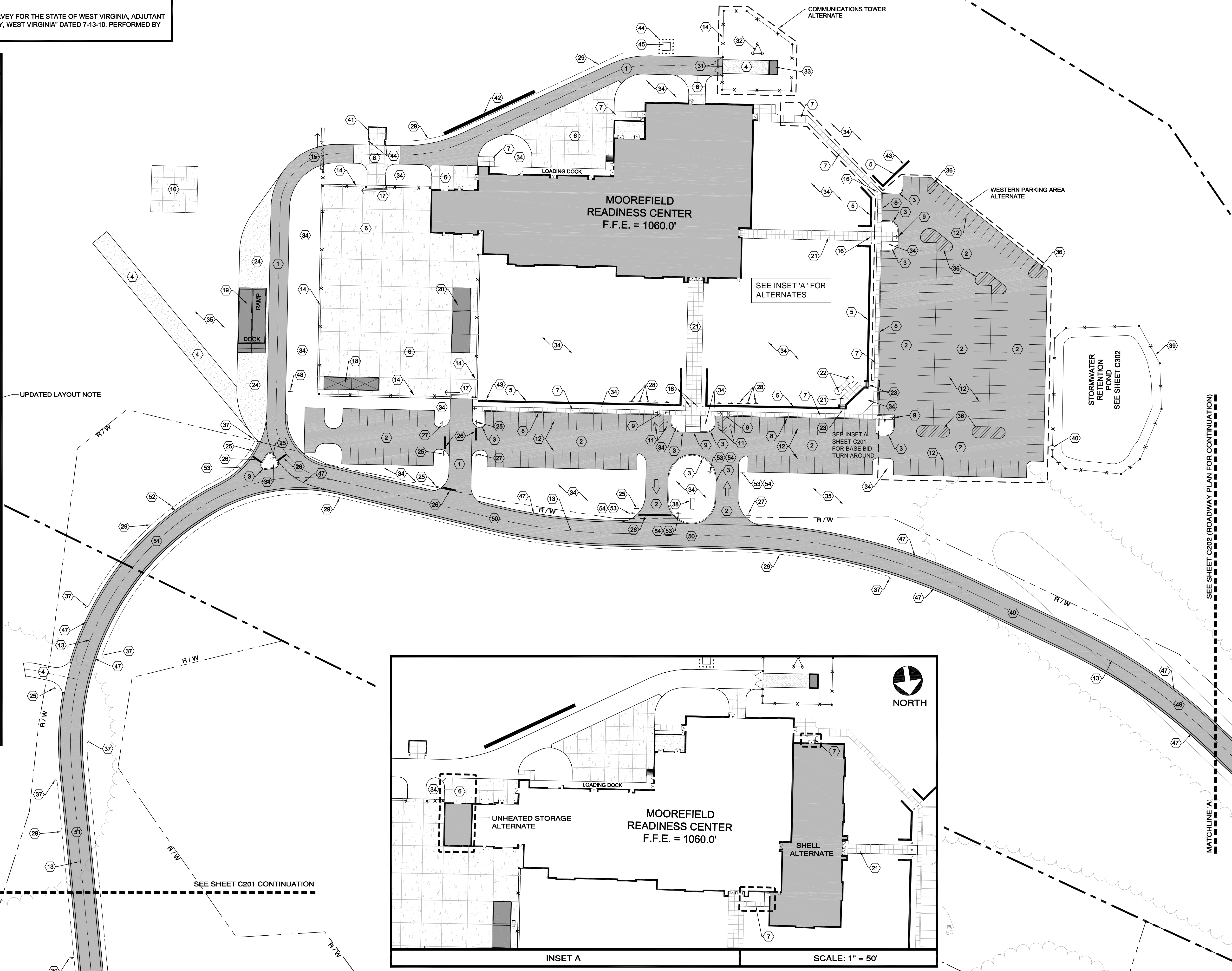
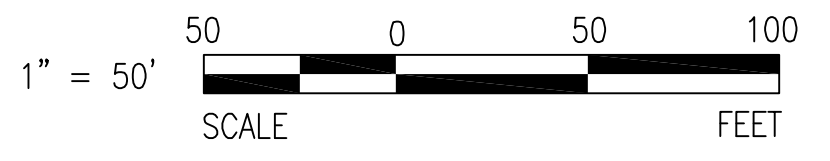
LAYOUT NOTE KEY

- 1 TYPE 1 ASPHALT PAVEMENT - SEE DETAIL 3 / C801
- 2 TYPE 2 ASPHALT PAVEMENT - SEE DETAIL 5 / C801
- 3 CAST IN PLACE CURB - SEE DETAIL 6 / C801
- 4 GRAVEL ACCESS ROAD - SEE DETAIL 12 / C801
- 5 FORCE PROTECTION WALL - SEE DETAIL 4 / C811
- 6 CONCRETE PAVING - SEE DETAIL 11 / 801
- 7 5'-0" WIDE CONCRETE SIDEWALK - SEE DETAIL 9 / C801
- 8 INTEGRAL CURB AND SIDEWALK - SEE DETAIL 7 / C801
- 9 CURB RAMP - SEE DETAIL 2 / C802
- 10 HELI PAD - SEE SHEET C814
- 11 HANDICAPPED PARKING SPACE - SEE DETAILS 4 / C802
- 12 PARKING SPACE STRIPING - SEE DETAILS 5 / C802
- 13 BARRIER LINE DOUBLE YELLOW TYPE II - SEE DETAIL 8 / C802
- 14 CHAIN LINK SECURITY FENCE - SEE DETAIL SHEET C803
- 15 30'-0" WIDE FORCE PROTECTION GATE - SEE DETAIL SHEET C804
- 16 REMOVABLE BOLLARD - SEE DETAIL 3 / C811
- 17 24'-0" WIDE SLIDING GATE - SEE DETAIL 2 / C805
- 18 FUEL TRUCK PAD - SEE DETAIL SHEET C813
- 19 LOADING RAMP - SEE DETAIL SHEET C808
- 20 WASH RACK - SEE DETAIL SHEET C809
- 21 CONCRETE WALKWAY - SEE DETAIL 9 / C801
- 22 (2) 40' FLAGPOLE - SEE DETAIL 7 / C811
- 23 CONCRETE STEPS - SEE DETAIL 8 / C811
- 24 GRAVEL PAVING - SEE DETAIL 1 / C801
- 25 STOP SIGN - SEE DETAIL 6 / C802
- 26 STOP LINE TYPE V (24") - SEE DETAIL 8 / C802
- 27 NO HEAVY TRUCKS SIGN - SEE DETAIL 6 / C802
- 28 HELV SIGN - SEE DETAIL 6 / C802
- 29 GUARDRAIL TYPE I CLASS III IN ACCORDANCE WITH WVDOT
- 30 "S" CURVE SIGN - SEE DETAIL 6 / C802
- 31 20' WIDE DOUBLE SWING GATE - SEE DETAIL 8 / C805
- 32 PROPOSED RADIO TOWER - NOT IN THIS CONTRACT
- 33 PROPOSED PREFABRICATED BUILDING - NOT IN THIS CONTRACT
- 34 TYPE 1 LAWN AND 12" TOPSOIL - SEE SPECIFICATION 02920 "LAWNS AND GRASSES"
- 35 TYPE 2 LAWN - SEE SPECIFICATION 02920 "LAWNS AND GRASSES"
- 36 PARKING ISLAND STRIPING - SEE DETAIL 3 / C801
- 37 GUARDRAIL FLARED END - SEE DETAIL 13 / C801
- 38 ENTRANCE SIGN - SEE ARCHITECTURAL DRAWINGS
- 39 FIELD FENCE - SEE DETAIL 5 & 6 / C811
- 40 FARM GATE - SEE DETAIL 5 / C811
- 41 TRASH ENCLOSURE - SEE SHEET C812
- 42 PRECAST CONCRETE BLOCK RETAINING WALL - SEE DETAIL 9 / C811
- 43 WALL WILL HAVE 88' BRICK FACE ON BOTH SIDES - SEE DETAIL 4 / C811
- 44 8" BOLLARD - SEE DETAIL 1 / C811
- 45 PAD MOUNTED TRANSFORMER - SEE ELECTRICAL PLANS
- 46 DOTTED WHITE EDGE LINE (4") TYPE II
- 47 EDGE LINE (4") TYPE II WHITE - SEE DETAIL 8 / C802
- 48 DEAD END AND AUTHORIZED VEHICLES ONLY SIGN - SEE DETAIL 6 / C802
- 49 NORMAL PAVEMENT SECTION - SEE DETAIL 2 / C800
- 50 SINGLE SLOPE PAVEMENT SECTION - SEE DETAILS 1 & 2 / C801
- 51 TYPICAL PAVEMENT SECTION - SEE DETAILS 1 / C801 & 1,2,3 / C802
- 52 SPEED LIMIT SIGN 30 MPH - SEE DETAIL 6 / C802
- 53 DO NOT ENTER SIGN - SEE DETAIL 6 / C802
- 54 ONE WAY SIGN - SEE DETAIL 6 / C802

UPDATED LAYOUT NOTE

LEGEND

→ SLOPE INDICATION ARROW OR GATE OPENING DIRECTION (FOR REFERENCE ONLY)



SEE SHEET C202 (ROADWAY PLAN FOR CONTINUATION)

MATCHLINE 'B' SEE SHEET C201 CONTINUATION

INSET A

SCALE: 1" = 50'