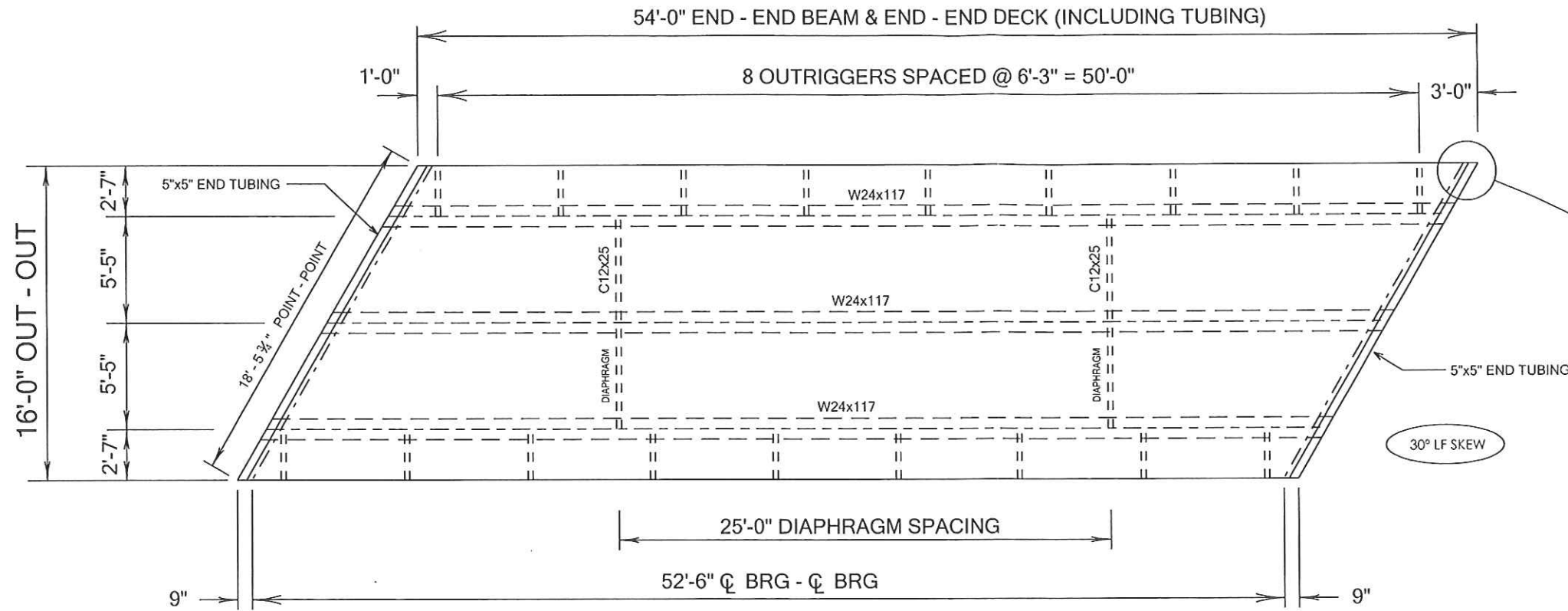
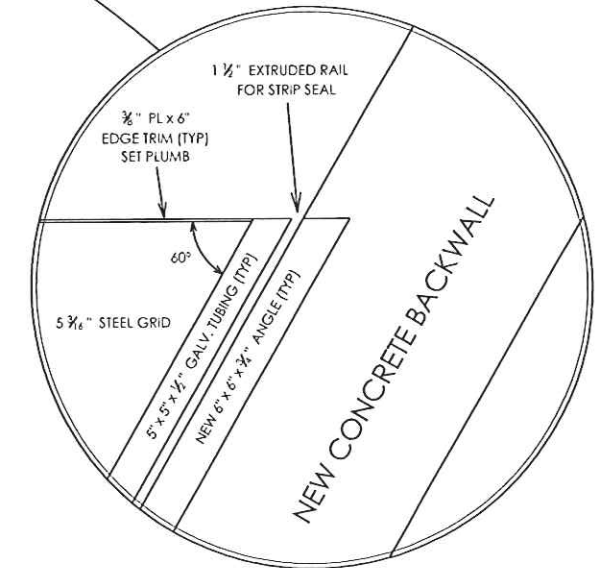


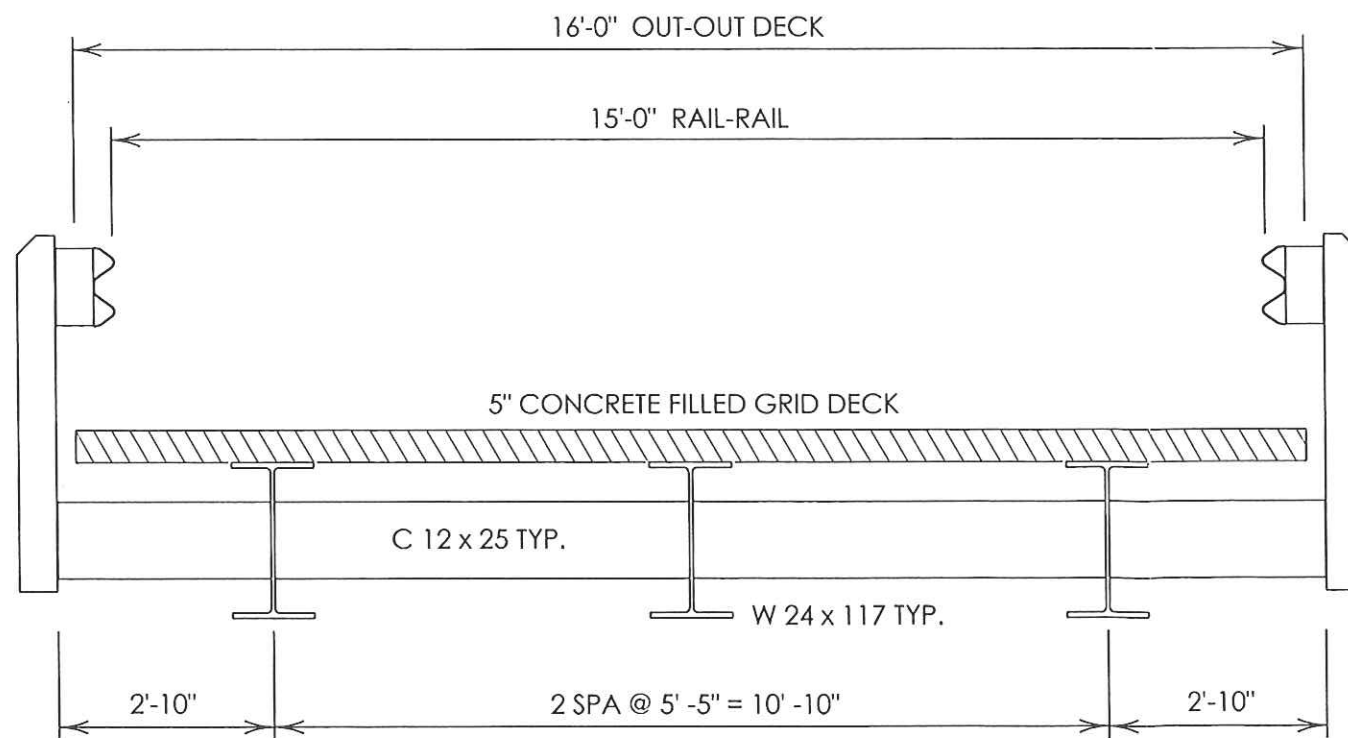
PUBLIC ROADS DIV.	STATE DIST. NO.	PROJECT NUMBER	COUNTY	SHEET NO.	TOTAL SHEETS
WV	8	S347-39-2.09	TUCKER	1	4



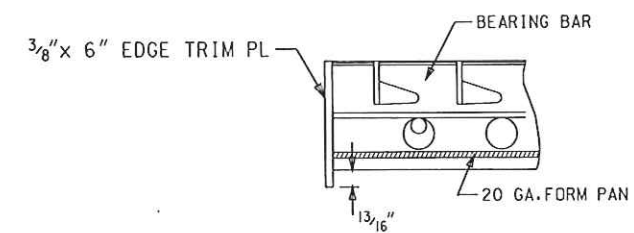
DECK PLAN VIEW



DECK END DETAIL AT EDGE



PROPOSED CROSS SECTION



DECK EDGE / DRIP EDGE

NO.	REVISION	DATE	BY

THE WEST VIRGINIA DIVISION OF HIGHWAYS  
STRUCTURES DIVISION

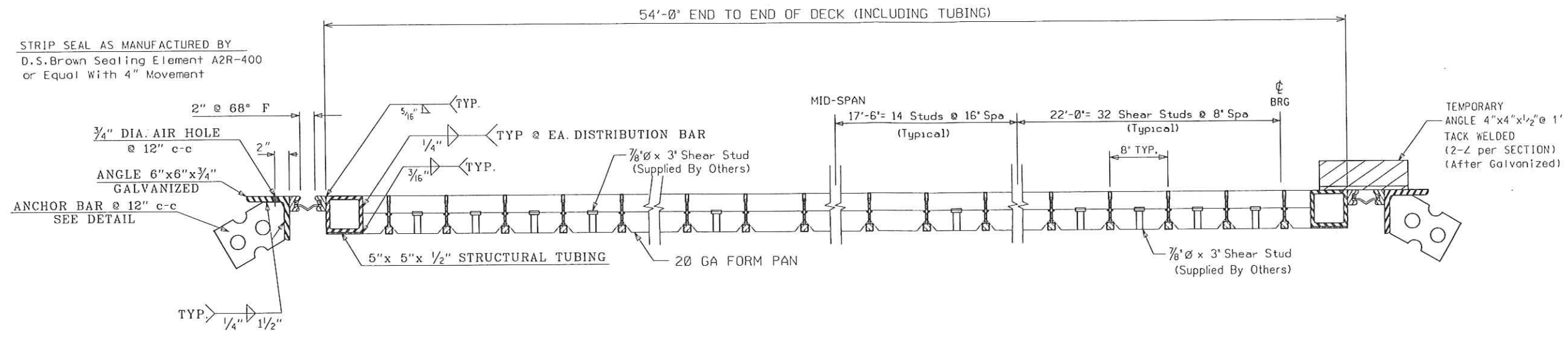
PLEASANT RUN #2 BRIDGE  
OVER PLEASANT RUN  
IN TUCKER COUNTY

DESIGNED BY	DATE
PRB	10/11
CHECKED BY	DATE
PRB	10/11
REVISIONS	

GRID DECK DETAILS  
GRID DECK CONTROL SHEET 1 of 4

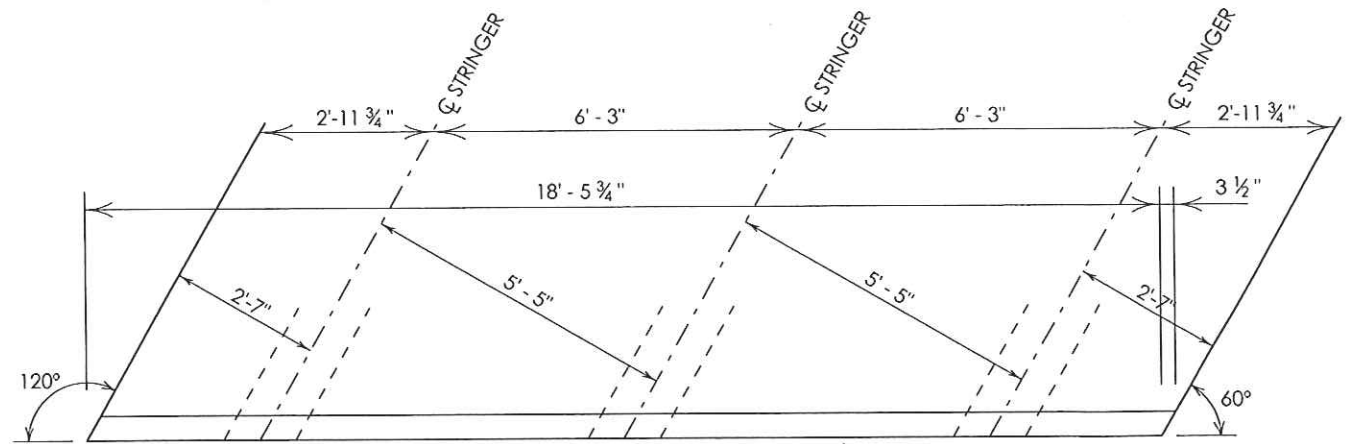
SHEET 1 of 4  
BRIDGE NUMBER  
11037

PUBLIC ROADS DIV.	STATE DIST. NO.	PROJECT NUMBER	COUNTY	SHEET NO.	TOTAL SHEETS
WV	8	S347-39-2.09	TUCKER	2	4

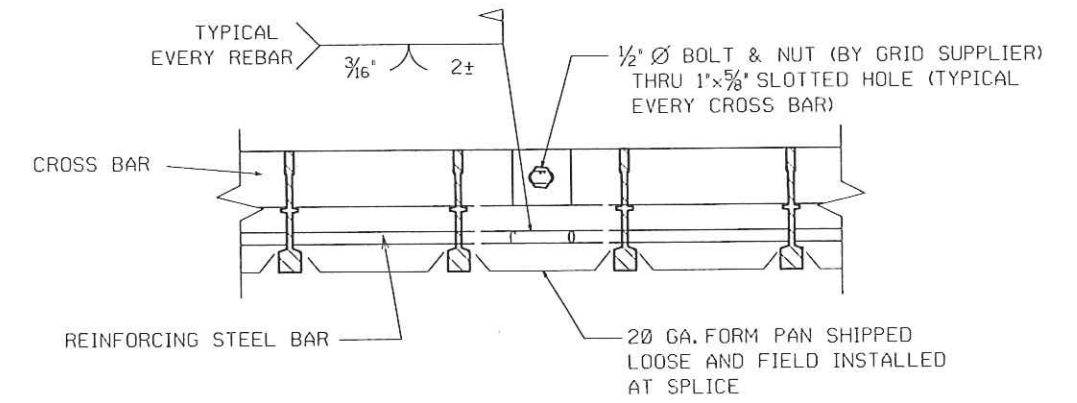


**NEW DECK PANEL - ELEVATION VIEW**

NOTE:  
EXPANSION ASSEMBLIES AND GRID PANELS SHALL BE GALVANIZED  
AFTER FABRICATION IN ACCORDANCE WITH AASHTO M 111

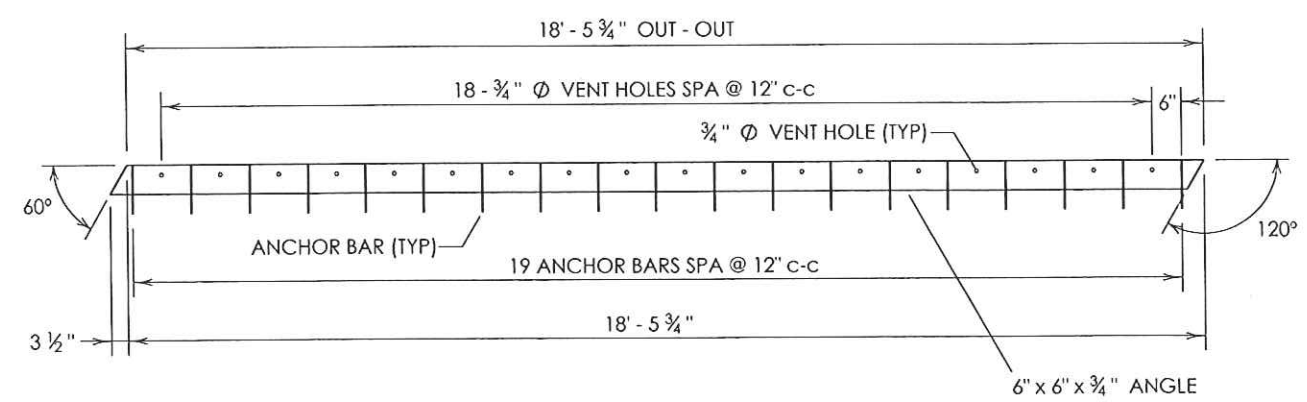


**PLAN VIEW DECK**

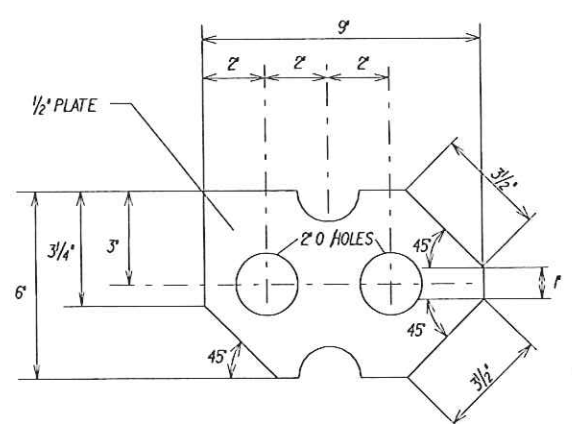


**PANEL SPLICE DETAIL**

AS REQUIRED



**PLAN VIEW ABUTMENT**



**ANCHOR BAR DETAIL**

NO.	REVISION	DATE	BY

THE WEST VIRGINIA DIVISION OF HIGHWAYS  
STRUCTURES DIVISION  
**PLEASANT RUN #2 BRIDGE  
OVER PLEASANT RUN  
IN TUCKER COUNTY**

DESIGNED BY	DATE
PRB	11/11
CHECKED BY	DATE
PRB	11/11
APPROVED BY	DATE

GRID DECK DETAILS  
GRID DECK CONTROL SHEET 2 of 4

2 of 4  
BRIDGE NUMBER  
11037

PUBLIC ROADS DIV.	STATE DESI. NO.	PROJECT NUMBER	COUNTY	SHEET NO.	TOTAL SHEETS
WV	8	S347-39-2.09	TUCKER	3	4

## GENERAL NOTES

### DESIGN LOADING

THE BRIDGE DECK IS TO BE DESIGNED FOR AN HL-93 LIVE LOAD CAPACITY, INCLUDING A FUTURE 2" AVERAGE HLBC WEARING SURFACE, AND AS DETAILED IN THESE GRID DECK CONTROL SHEETS.

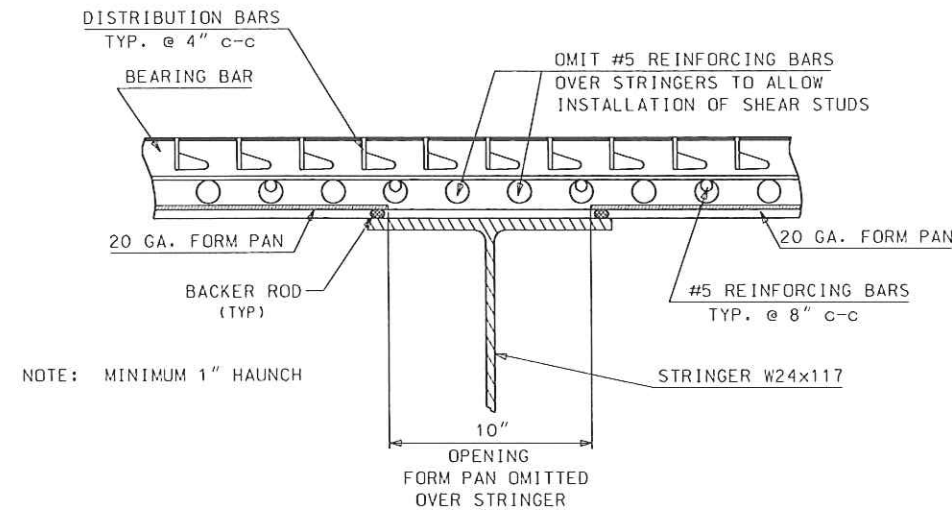
### GOVERNING SPECIFICATIONS

THE GOVERNING SPECIFICATIONS FOR THIS PROJECT ARE THE WEST VIRGINIA DIVISION OF HIGHWAYS STANDARD SPECIFICATIONS, ROADS AND BRIDGES, ADOPTED 2000, AS AMENDED BY THE CURRENT SUPPLEMENTAL SPECIFICATIONS AND STANDARD BRIDGE DETAILS, ETC., OF THE W. VA. DIVISIONS OF HIGHWAYS.

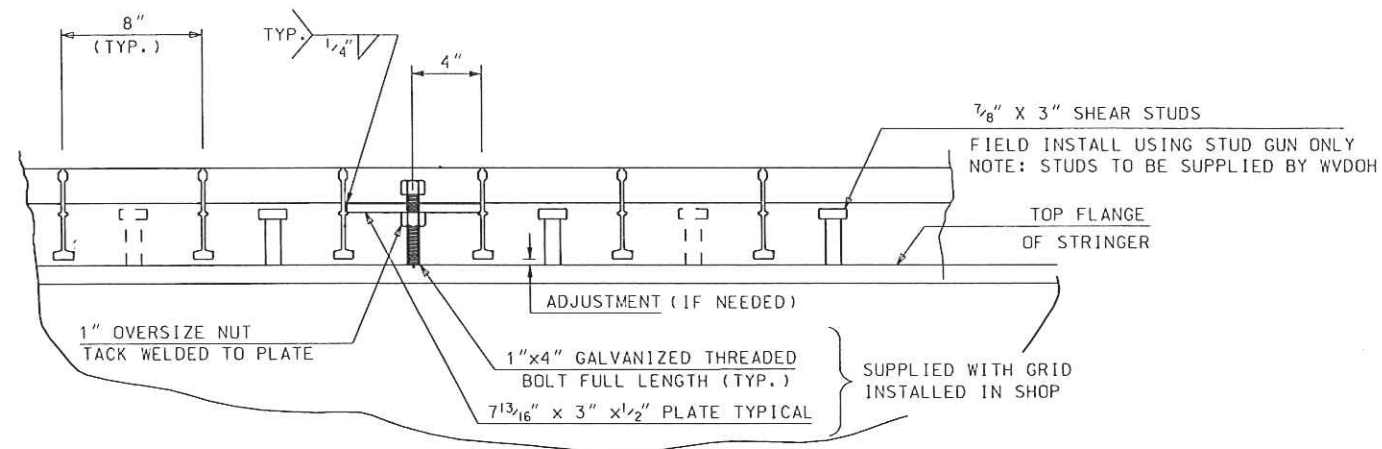
### SHOP DRAWINGS

THE DECK SUPPLIER SHALL SUBMIT TWO (2) COPIES OF SHOP DRAWINGS FOR REVIEW AND APPROVAL. NO WORK SHALL BEGIN WITHOUT APPROVED SHOP DRAWINGS. THE SUPPLIER SHALL SUBMIT SIX (6) APPROVED COPIES OF SHOP DRAWINGS FOR DISTRIBUTION. ALL NECESSARY SHOP DRAWINGS SHALL BE SUBMITTED TO:

DAVID E. SCOTT  
DISTRICT EIGHT BRIDGE ENGINEER  
DISTRICT EIGHT HEADQUARTERS  
P. O. BOX 1516  
ELKINS, WV 26241



TYPICAL SECTION OVER STRINGER



LEVELING BOLT AND SHEAR STUD DETAIL

## GRID DECK NOTES

1. THE STEEL GRID BRIDGE DECK AS SPECIFIED HEREIN SHALL BE FULL DEPTH CONCRETE FILL. APPROPRIATE REINFORCING STEEL BARS AND 20 GA. FORM PANS SHALL BE SUPPLIED BY THE GRID DECK MANUFACTURER.
2. THE STEEL GRID FLOORING SHALL BE 5 INCH DEEP AS DETAILED BY THE "BRIDGE GRID FLOORING MANUFACTURERS ASSOCIATION" DESIGN AND DATA SHEET, 1988 EDITION, OR EQUAL. (EXCEPT WHERE NOTED OTHERWISE) THE MAIN BEARING BARS SHALL BE SPACED AT 8 INCHES C/C MAXIMUM; CROSS BARS SHALL BE SPACED 4 INCHES C/C MAXIMUM. THE NO.5 DEFORMED REINFORCING BARS SHALL BE SPACED AT 8 INCHES C/C MAXIMUM.
3. THE STEEL GRID FLOORING SHALL CONFORM TO ALL REQUIREMENTS OF AASHTO M270-GRADE 50 (ASTM A709) STEEL. EXPANSION ANGLES, ANCHOR BAR, EXTRUDED RAILS AND EDGE TRIM PLATES SHALL CONFORM TO ALL REQUIREMENTS OF AASHTO M270-GRADE 36 (ASTM A36) STEEL. EXPANSION DAM STRUCTURAL TUBING SHALL CONFORM TO ASTM 500 AND TWENTY GAGE FORM PANS SHALL CONFORM TO ASTM A569 OR A366.
4. THE ENTIRE GRID FLOORING SYSTEM INCLUDING 5" x 5" x 1/2" STRUCTURAL TUBING, 6" x 6" x 3/4" EXPANSION ANGLES, EXTRUDED RAILS, FORM PANS, REINFORCING STEEL BARS, AND ALL ACCESSORIES, EXCEPT FOR BOLTS, NUTS AND WASHERS, SHALL BE GALVANIZED AFTER FABRICATION IN ACCORDANCE WITH AASHTO M111 (ASTM A123). ALL GALVANIZING THAT HAS BEEN CHIPPED OR DAMAGED DURING HANDLING OR WELDING SHALL BE REPAIRED IN ACCORDANCE WITH THE CURRENT AASHTO STANDARD SPECIFICATIONS FOR HIGHWAY BRIDGES, DIVISION 2, SECTION 12.8.
5. AASHTO M164 BOLTS, NUTS AND WASHERS AS REQUIRED FOR GRID DECK ASSEMBLY SHALL BE MECHANICALLY GALVANIZED.

NO.	REVISION	DATE	BY

THE WEST VIRGINIA DIVISION OF HIGHWAYS  
STRUCTURES DIVISION

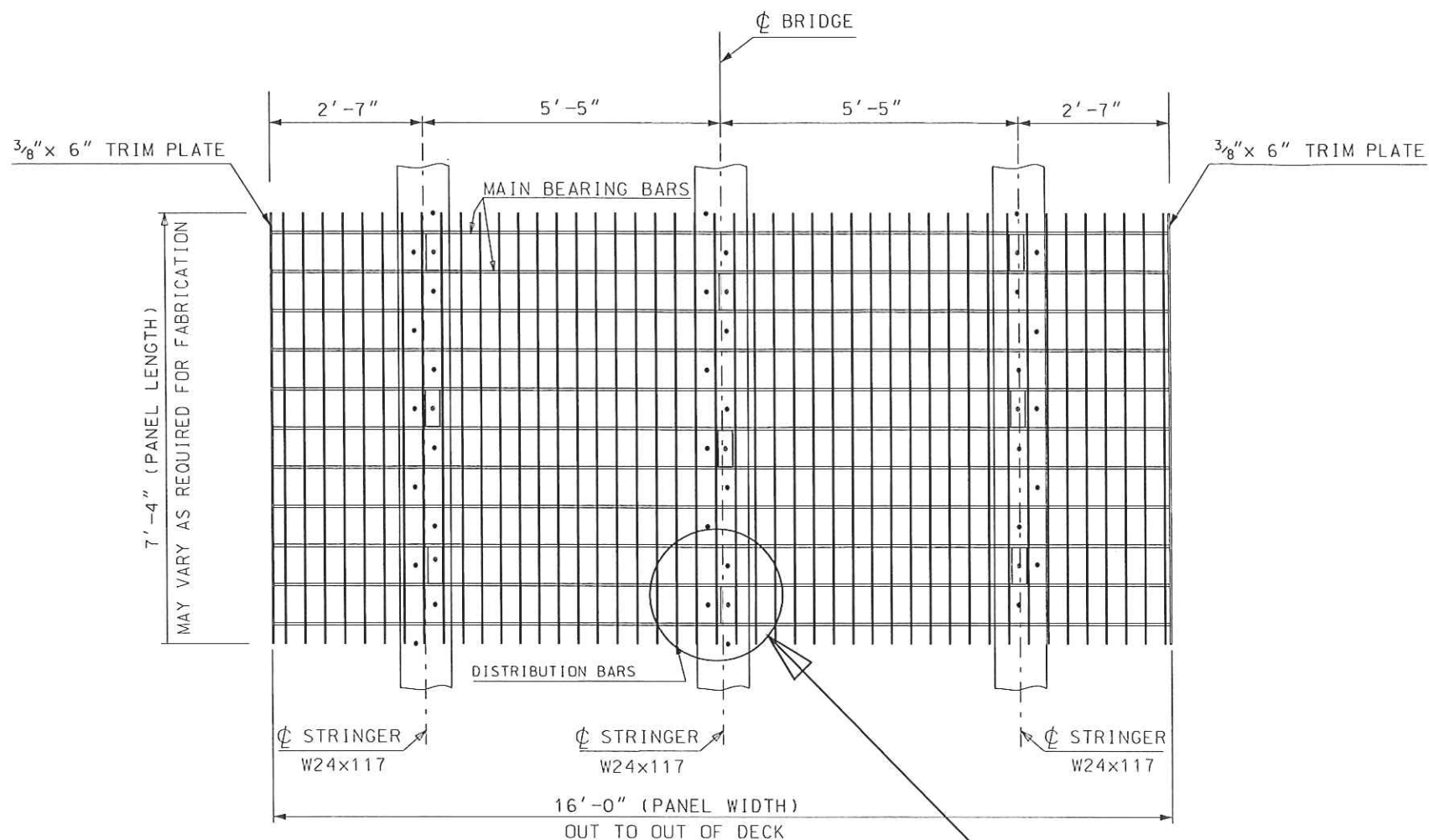
PLEASANT RUN #2 BRIDGE  
OVER PLEASANT RUN  
IN TUCKER COUNTY

DESIGNED BY:	DATE:
PRB	11/11
DRAWN BY:	DATE:
PRB	11/11
CHECKED BY:	

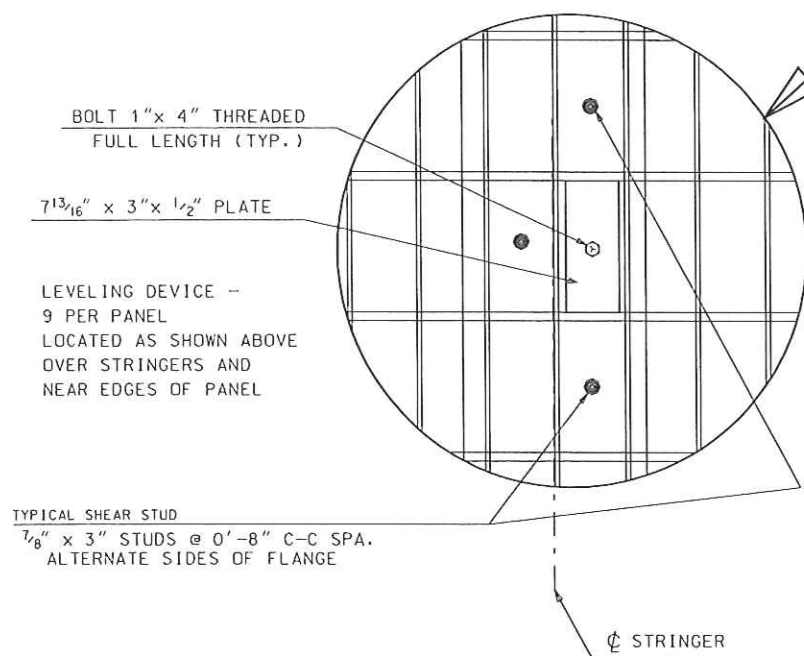
GRID DECK DETAILS  
GRID DECK CONTROL SHEET 3 of 4

SHEET 3 of 4  
BRIDGE NUMBER  
11037

FUBLIC ROADS DIV.	STATE DIST. NO.	PROJECT NUMBER	COUNTY	SHEET NO.	TOTAL SHEETS
WV	8	S347-39-2.09	TUCKER	4	4



DECKING PANEL DETAIL  
(SCALE: NONE)



### GRID DECK OPTIONS

TO BE FURNISHED BY GRID MANUFACTURER

MATERIAL	SIZE OR DIMEN	NO	TOTAL LENGTH	TOTAL WEIGHT
EXPANSION ANGLE 6"x6"x3/4" (28.7#/ft)	18'-5 3/4"	2	36'-11 1/2"	1061
STRUCTURAL TUBING 5"x5"x1/2" (28.43#/ft)	18'-5 3/4"	2	36'-11 1/2"	1051
TRIM BAR @ EDGE 3/8" x 6" (7.66#/ft)	54'-0"	2	108'-0"	827
CONTINUOUS NEOPRENE STRIP SEAL FOR 4" MOVEMENT	18'-5 3/4"	2	36'-11 1/2"	---
EXTRUDED RAIL FOR CONTINUOUS STRIP SEAL	18'-5 3/4"	4	73'-11"	---
ANCHOR BAR 10"x6"x1/2" (8.5#/ft)	---	38	---	323
1/2" PLATE FOR LEVELING DEVICE	7 13/16" x 3"	AS REQ'D	---	---
LEVEL BOLT 1"x4" WITH NUT	AS DETAILED	AS REQ'D	---	---
BOLT- 5/8"x1 3/4" AT CL ROADWAY PANEL SPLICE	AS DETAILED	AS REQ'D	---	---
#5 REINFORCING STEEL BARS	AS DETAILED	AS REQ'D	---	---
20 GAUGE FORM PANS	AS DETAILED	AS REQ'D	---	---
TEMP. EXPANS. ANGLE 4"x4"x1/2" (12.8#/ft)	1'-0"	4	4'-0"	51

ALL BOLTS SHALL BE SUPPLIED WITH NUTS AND WASHERS AS REQUIRED. BOLTS, NUTS AND WASHERS SHALL BE AASHTO M164 (ASTM A325) AND BE MECHANICALLY GALVANIZED.

5 3/16" GRID DECKING - 850.7 SF

(DECKING, TUBING, & PL's)  
54.0' x 16.0' = 864.0 SF

NO.	REVISION	DATE	BY

THE WEST VIRGINIA DIVISION OF HIGHWAYS  
STRUCTURES DIVISION

PLEASANT RUN #2 BRIDGE  
OVER PLEASANT RUN  
IN TUCKER COUNTY

DESIGNED BY	DATE
PRB	11/11
DRAWN BY	
PRB	11/11
CHECKED BY	

GRID DECK DETAILS  
GRID DECK CONTROL SHEET 4 of 4

4 of 4  
BRIDGE NUMBER  
11037