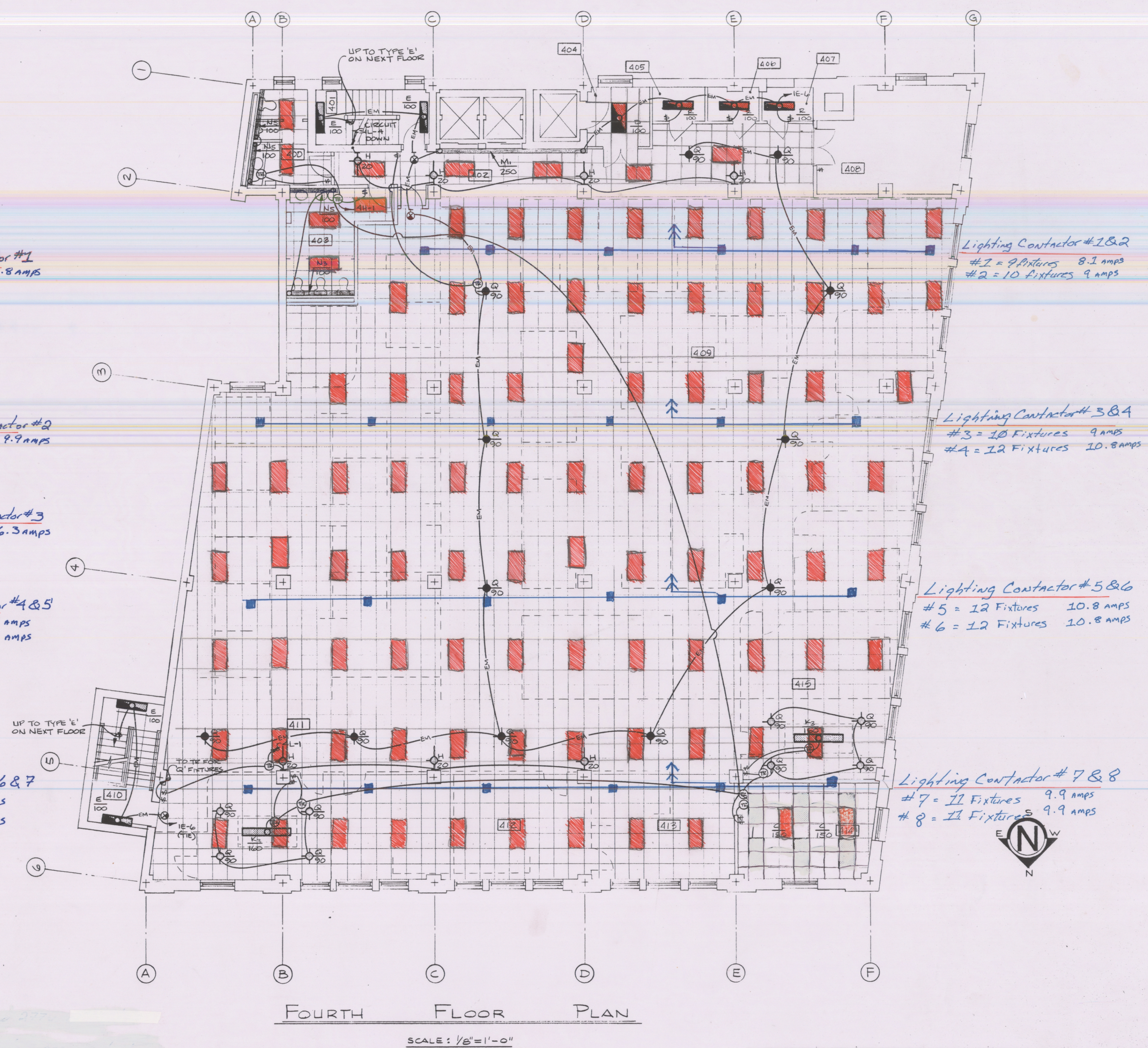




- 106 - 2X4 Lay-in fixtures per floor on 3rd and 4th floors
- No more than 16 fixtures per 20 Amp, 277 Volt circuit.
- No more than nine current carrying conductors per conduit.
- Switch locations shall remain.
- Per NEC 2011, LP24 Peanut Plus (or equal) lighting control panel to be installed in electrical closet next to lighting panel. The light control panel is specified only to establish an acceptable quality and performance level required for this project.



- 106 - 2X4 Lay-in fixtures per floor on 3rd and 4th floors
- No more than 16 fixtures per 20 Amp, 277 Volt circuit.
- No more than nine current carrying conductors per conduit.
- Switch locations shall remain.
- Per NEC 2011, LP24 Peanut Plus (or equal) lighting control panel to be installed in electrical closet next to lighting panel. The light control panel is specified only to establish an acceptable quality and performance level required for this project.

THIRD & FOURTH FLOOR LIGHTING PLANS
REMODELING the FORMER COYLE - RICHARDSON BUILDING
Lee & Dickinson St. Charleston, WV.
WEST VIRGINIA STATE BUILDING COMMISSION, BUILDING #22
(West Virginia State Tax Department, Revenue Operations Center)