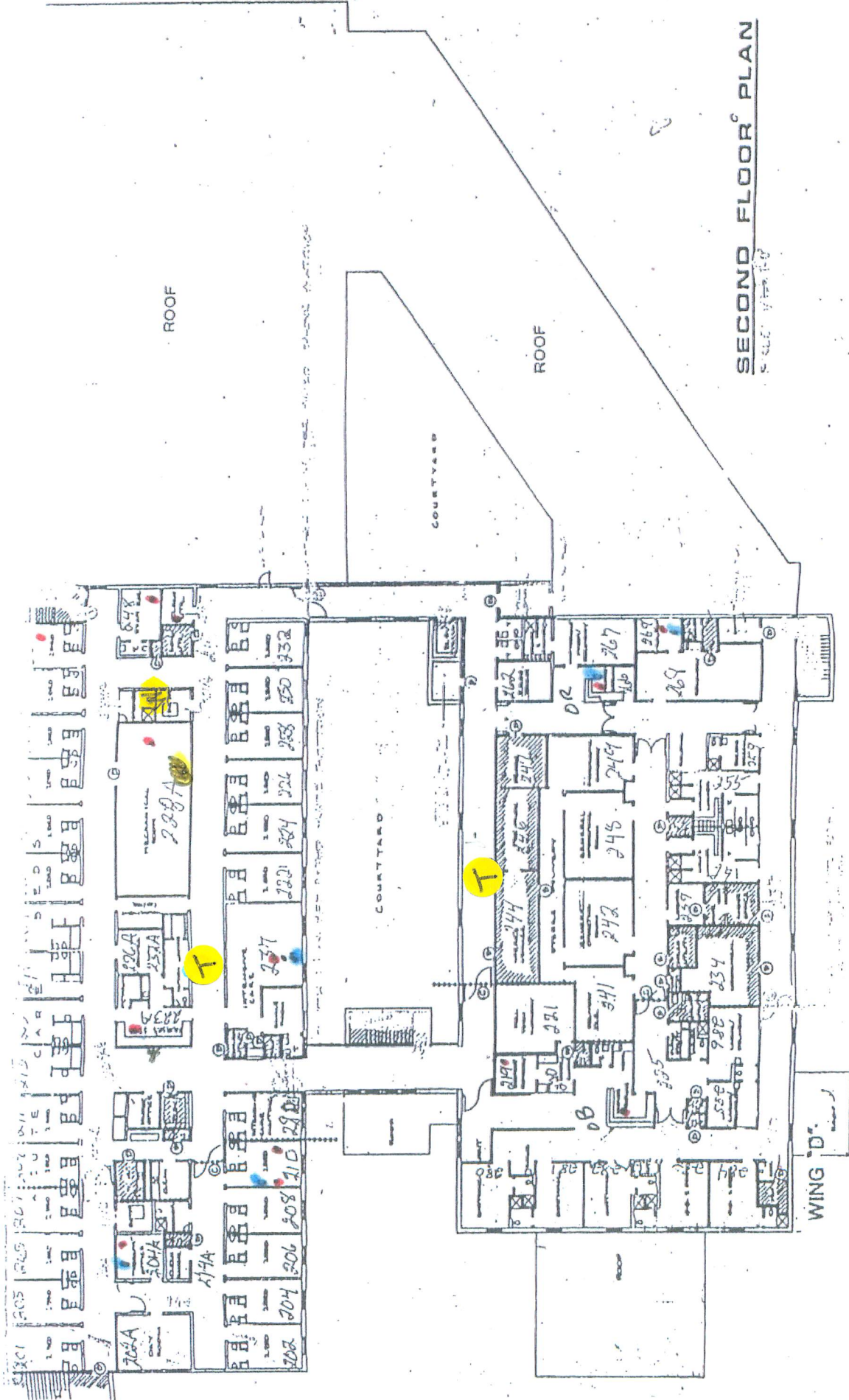


SCALE = 3/32" = 1'  
 WELCH OFFICES AND  
 DRUG CLINIC



Jean Rotenberg - 6-4-09



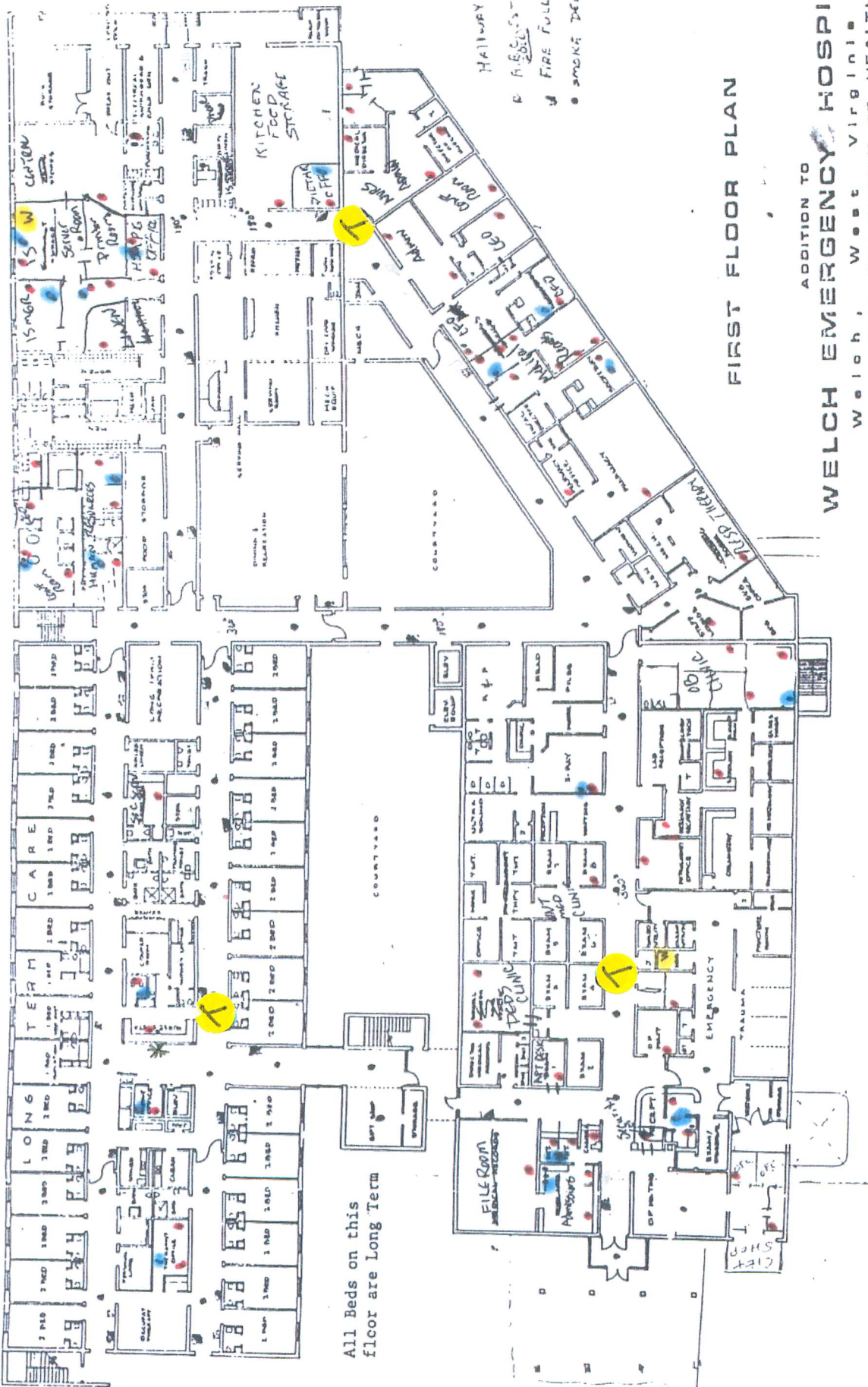
SECOND FLOOR PLAN

T = TIMECLOCK LOCATION

• PC

• Printer

W Wiring Closets



All beds on this floor are Long Term

FIRST FLOOR PLAN

ADDITION TO  
**WELCH EMERGENCY HOSPITAL**  
WELCH, WEST VIRGINIA  
WEST VIRGINIA DEPARTMENT OF HEALTH

- HALLWAY MARKERS
- FIRE FULL STATIONS
- SMOKE DETECTORS

T = TIMECLOCK LOCATION

- PC
- Printer
- Wiring closets